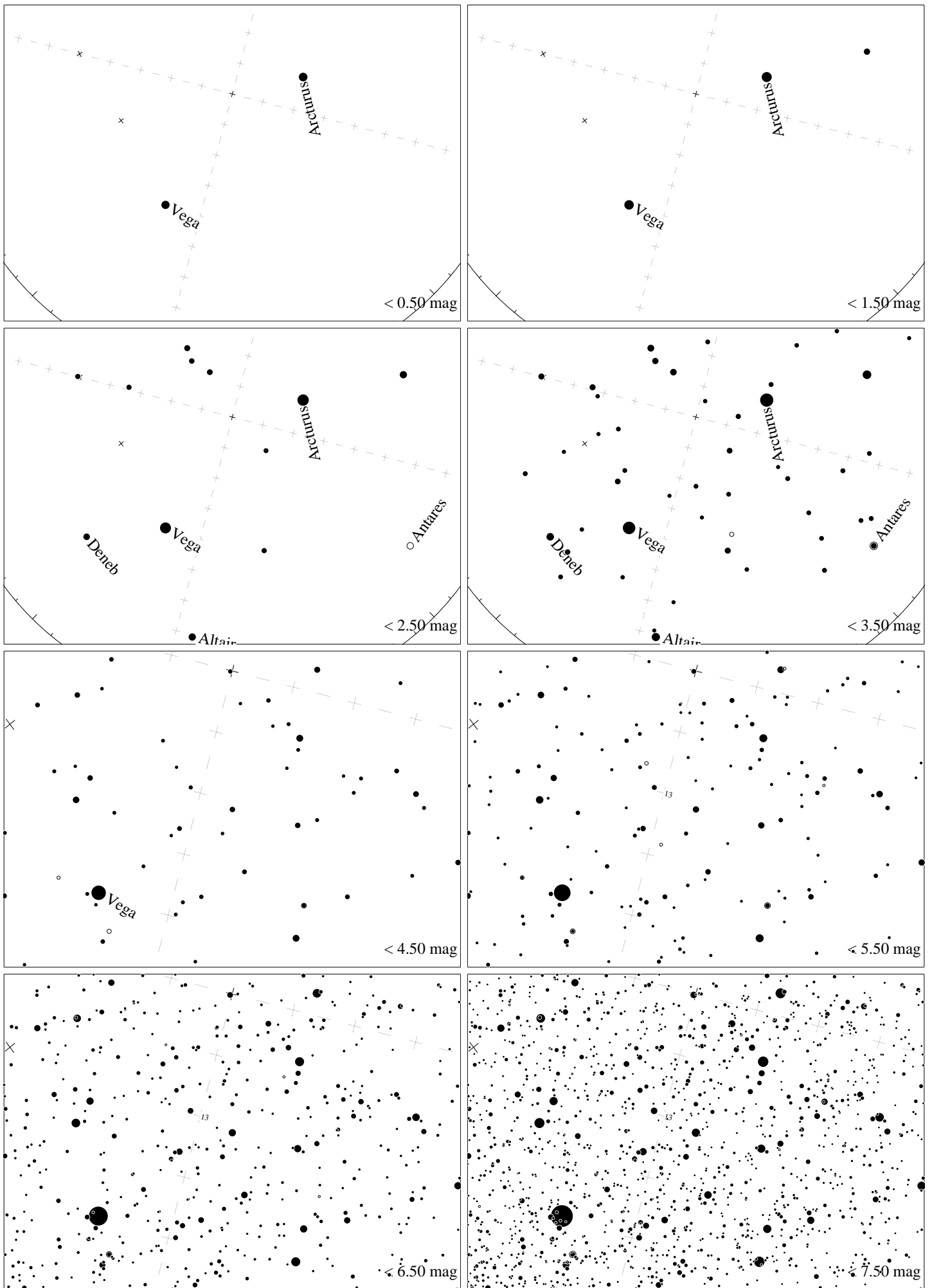
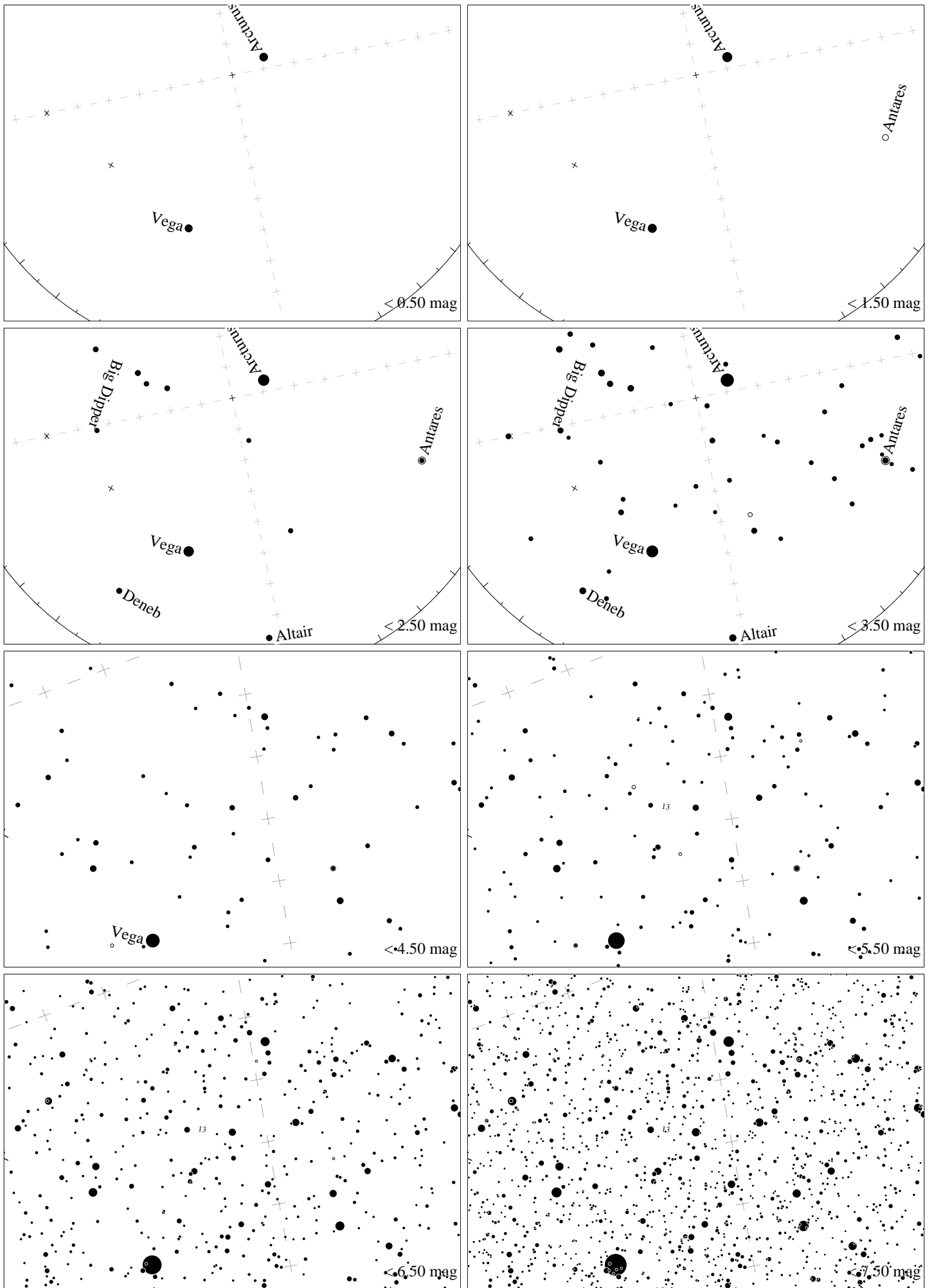


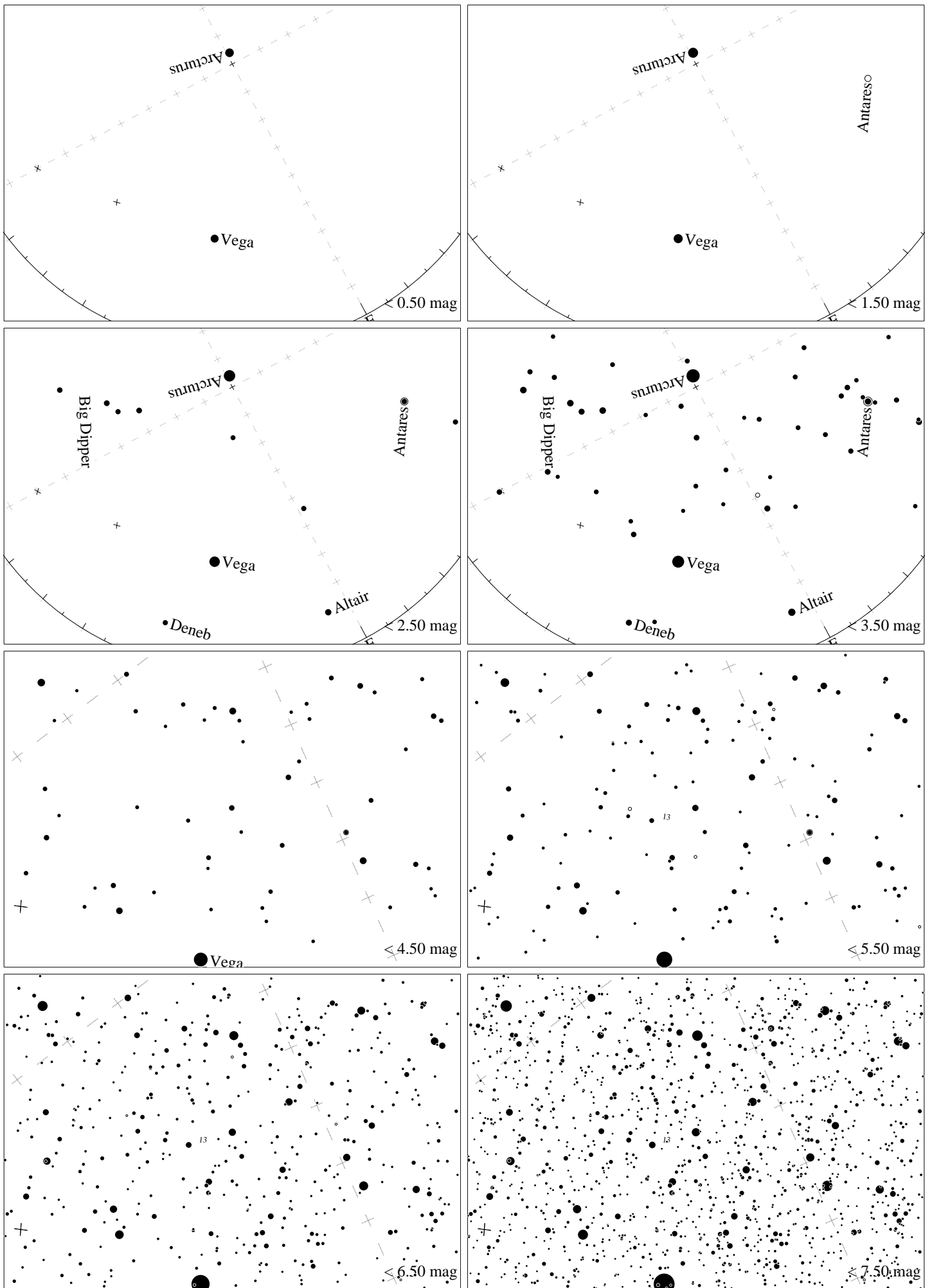
Maps for Globe at Night latitude 50° , 2023-06-14, 23:30 local time (Sun at -16°), transparent air. Lines from N(E,S,W) to zenith shown (crosses each 10°). Centered on ζ Herculis, which is 13° to the right from S, at 71° height. Detailed maps 50° vertically, the first four maps 100° . *Jan Hollan, CzechGlobe*



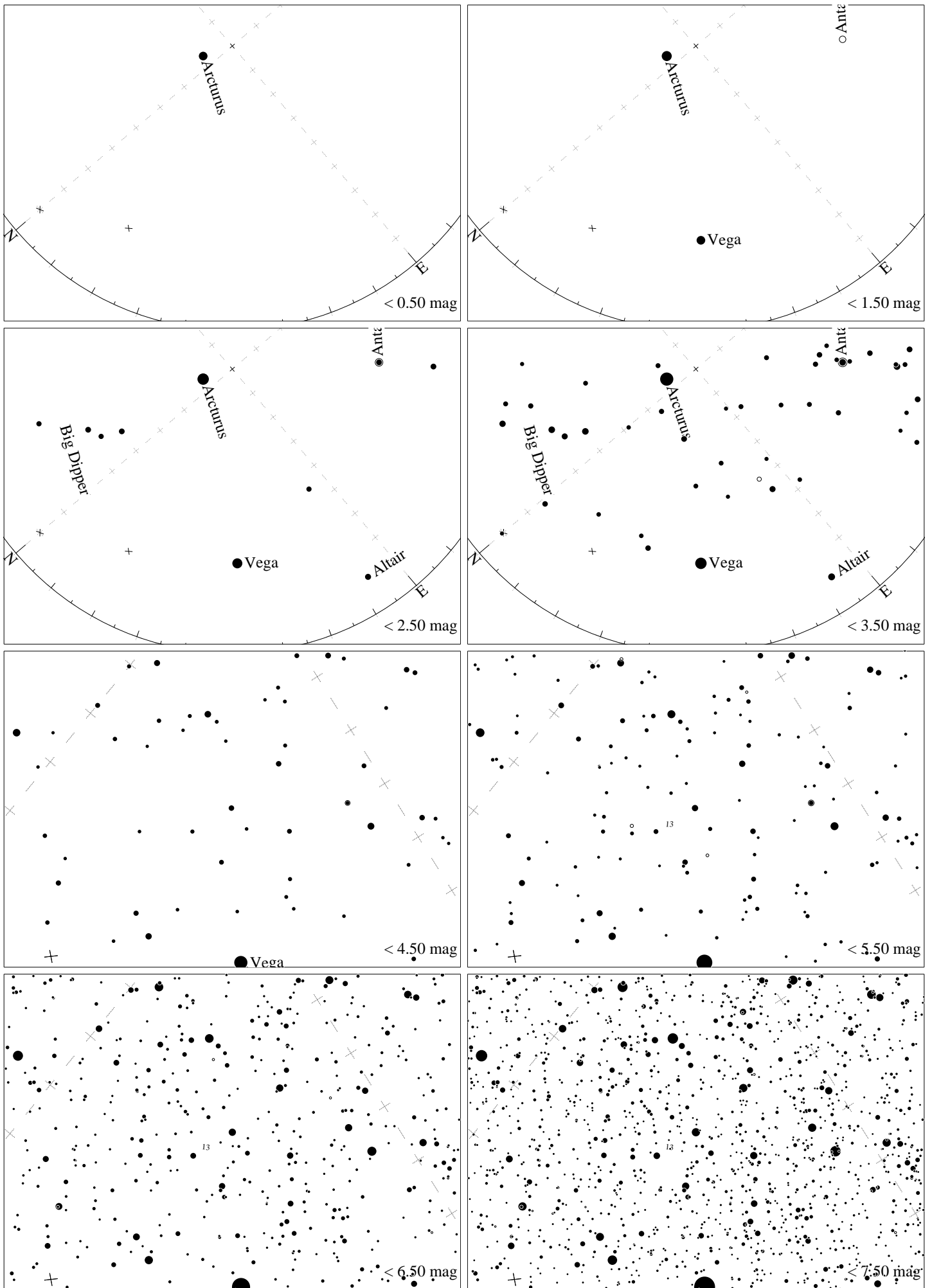
Maps for Globe at Night latitude 40° , 2023-06-14, 21:30 local time (Sun at -18°), transparent air. Lines from N(E,S,W) to zenith shown (crosses each 10°). Centered on ζ Herculis, which is 75° to the left from S, at 68° height. Detailed maps 50° vertically, the first four maps 100° . *Jan Hollan, CzechGlobe*



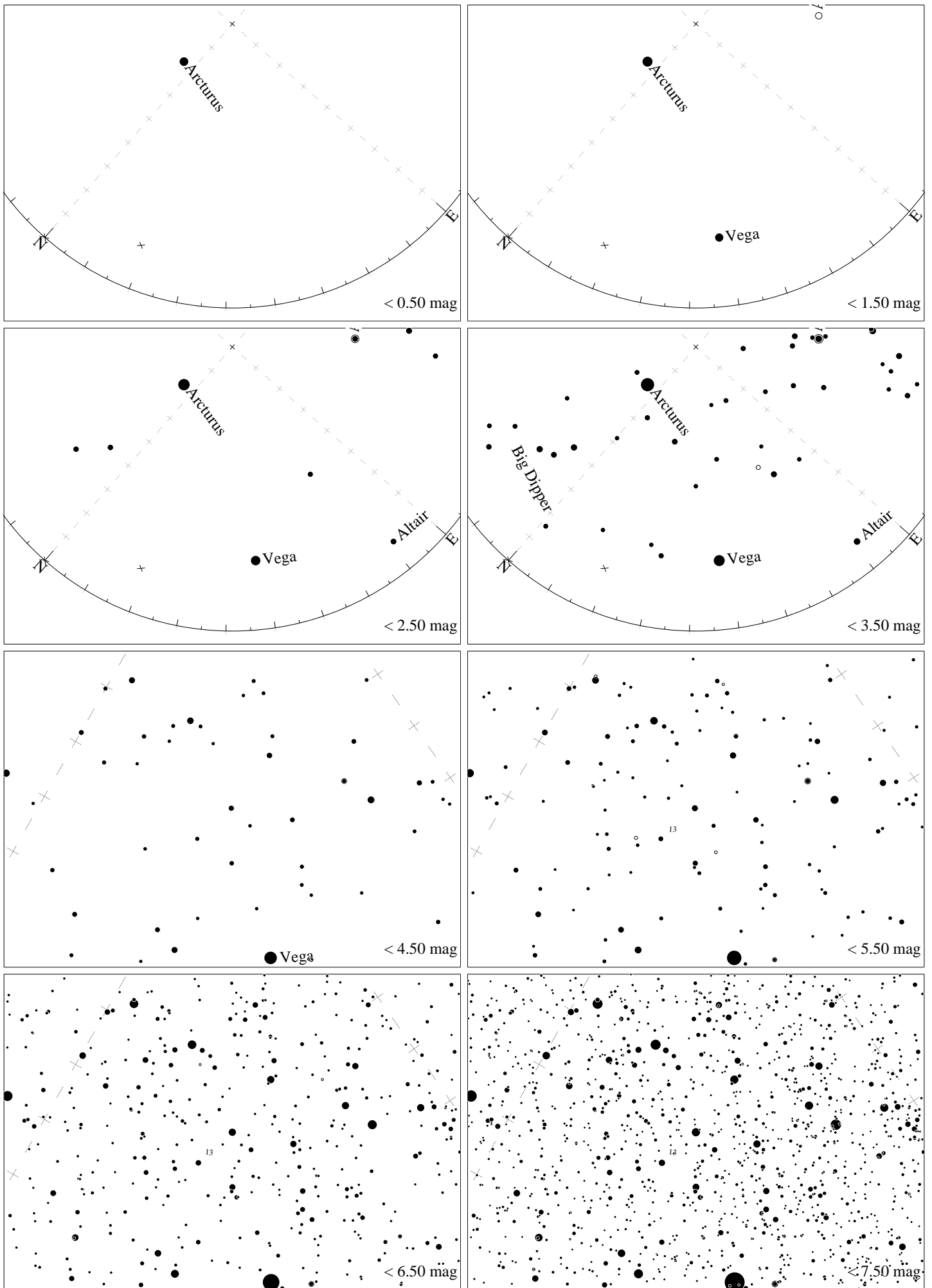
Maps for Globe at Night latitude 30° , 2023-06-14, 21 h local time (Sun at -21°), transparent air. Lines from N(E,S,W) to zenith shown (crosses each 10°). Centered on ζ Herculis, which is 78° to the right from N, at 62° height. Detailed maps 50° vertically, the first four maps 100° . *Jan Hollan, CzechGlobe*



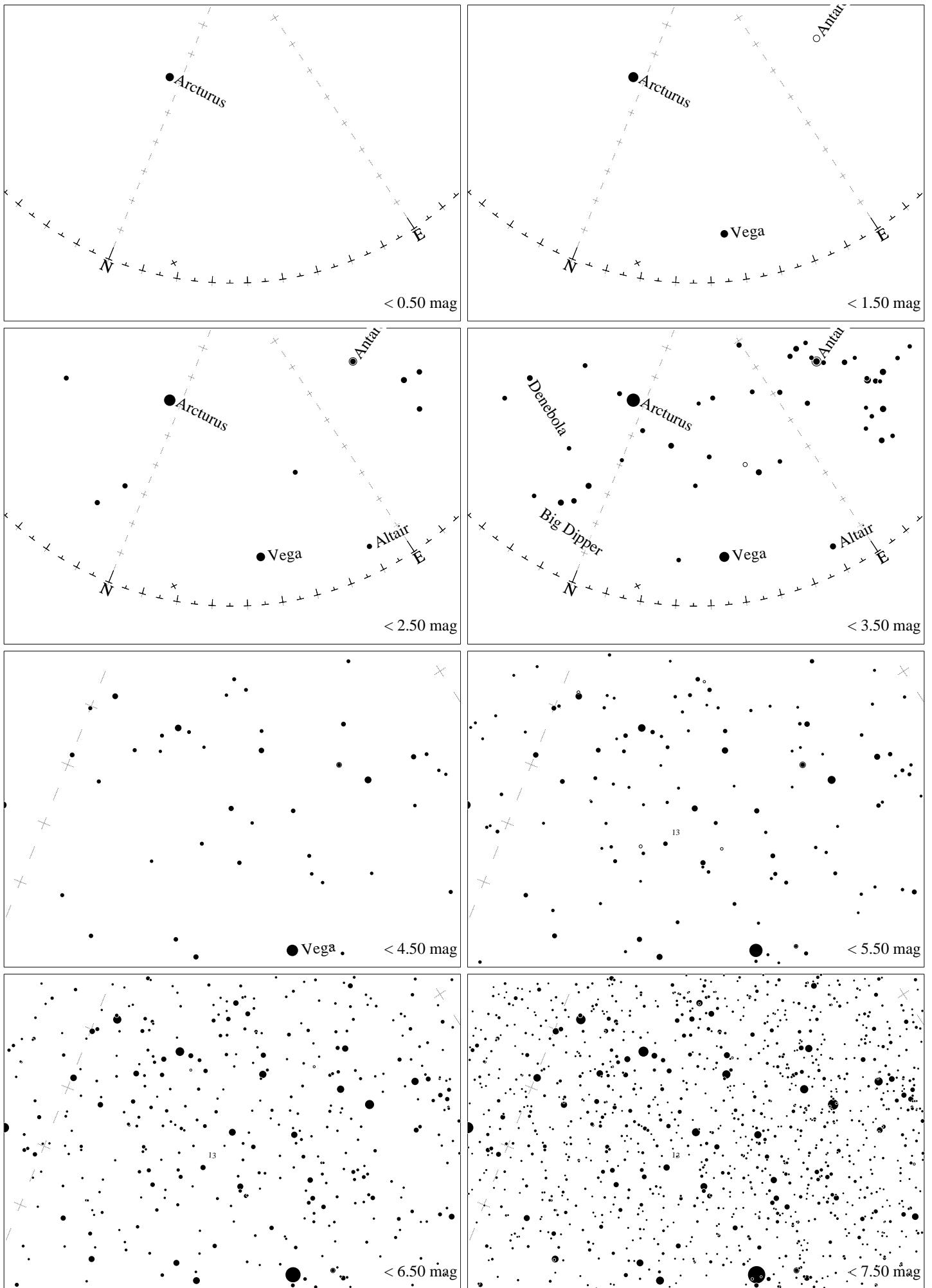
Maps for Globe at Night latitude 20°, 2023-06-14, 21 h local time (Sun at -28°), transparent air. Lines from N(E,S,W) to zenith shown (crosses each 10°). Centered on ζ Herculis, which is 62° to the right from N, at 59° height. Detailed maps 50° vertically, the first four maps 100° . *Jan Hollan, CzechGlobe*



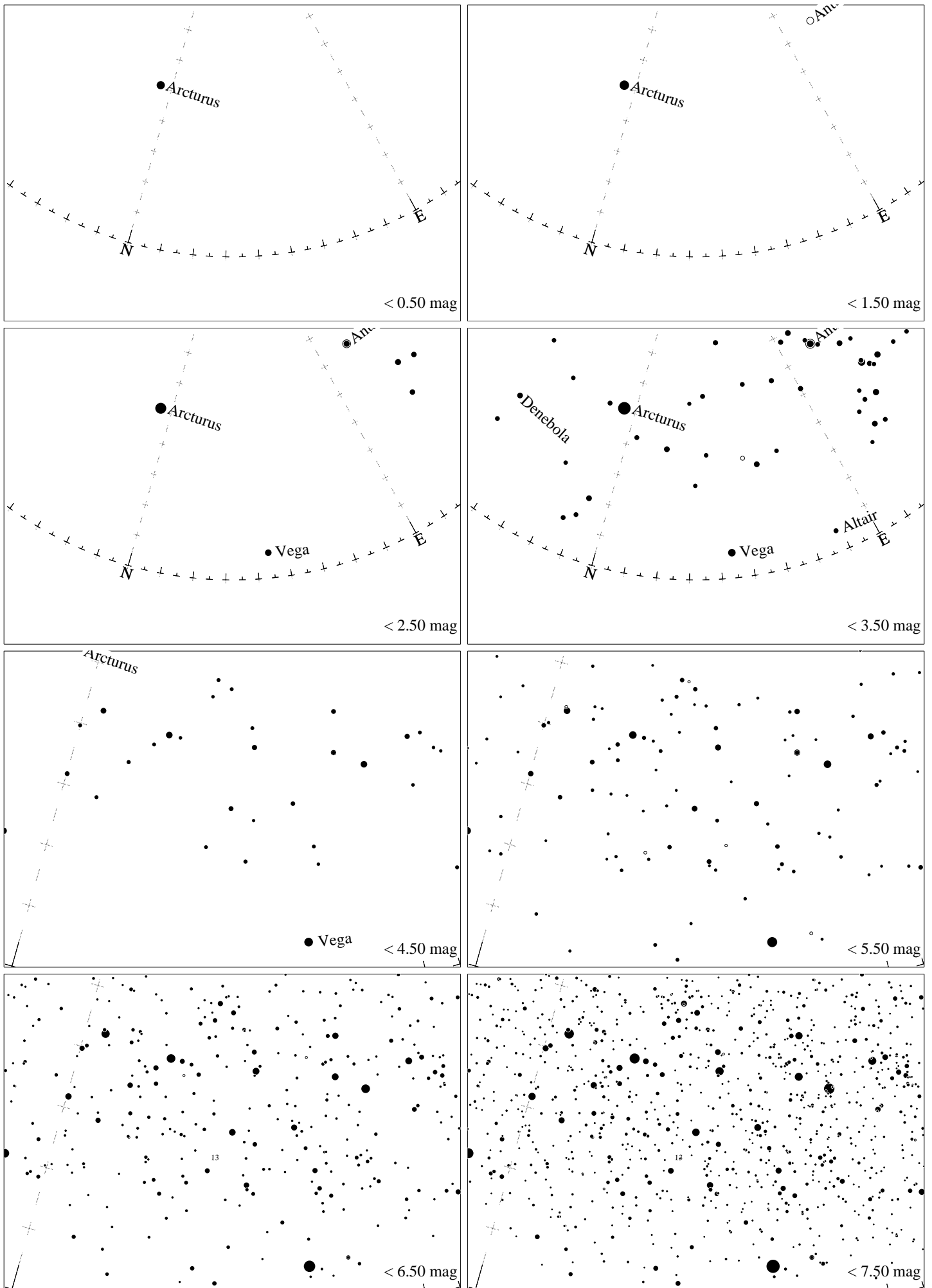
Maps for Globe at Night latitude 10° , 2023-06-14, 21 h local time (Sun at -35°), transparent air. Lines from N(E,S,W) to zenith shown (crosses each 10°). Centered on ζ Herculis, which is 50° to the right from N, at 53° height. Detailed maps 50° vertically, the first four maps 100° . *Jan Hollan, CzechGlobe*



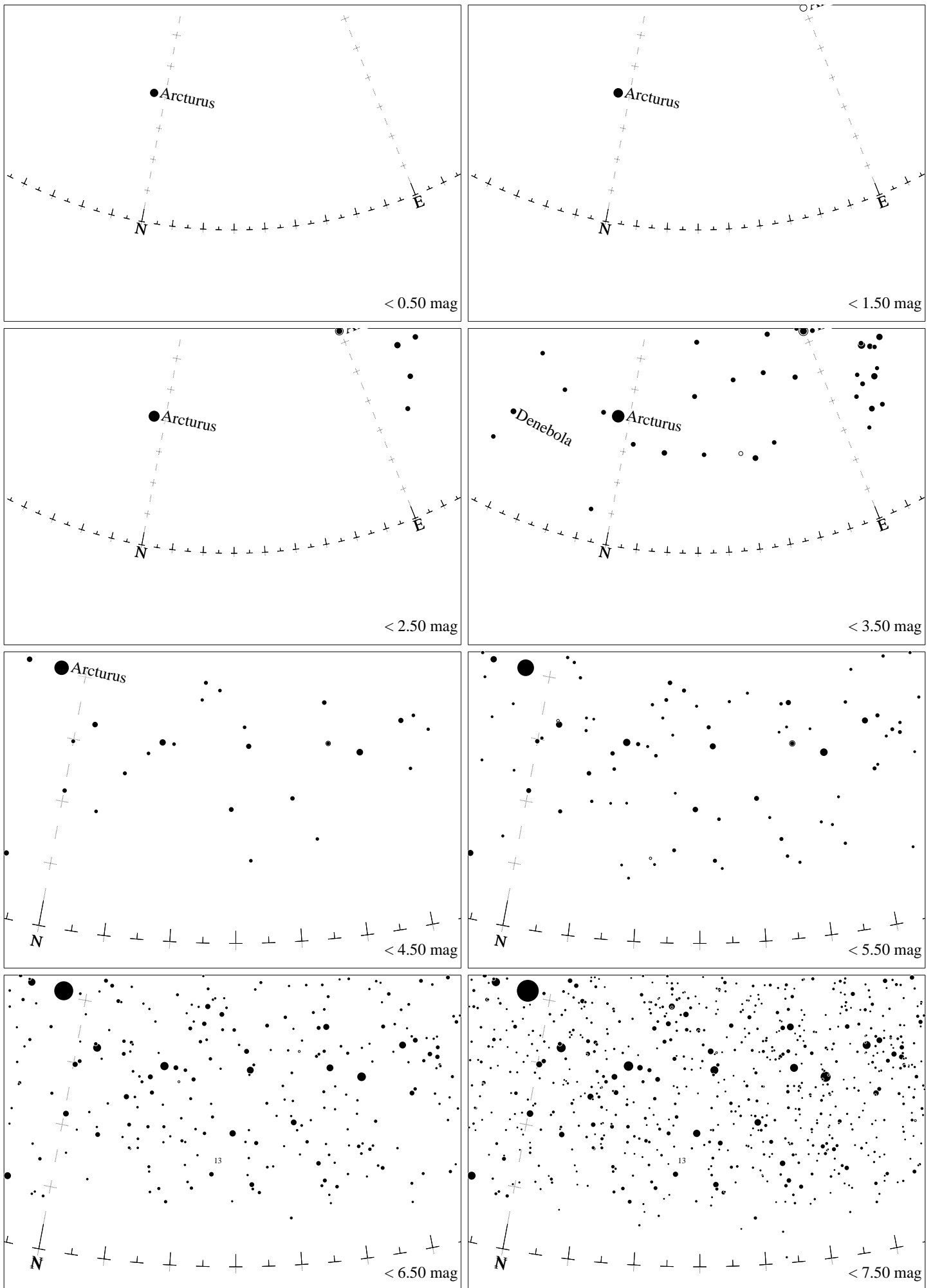
Maps for Globe at Night latitude 0° , 2023-06-14, 21 h local time (Sun at -40°), transparent air. Lines from N(E,S,W) to zenith shown (crosses each 10°). Centered on ζ Herculis, which is 41° to the right from N, at 46° height. Detailed maps 50° vertically, the first four maps 100° . *Jan Hollan, CzechGlobe*



Maps for Globe at Night latitude -10° , 2023-06-14, 21 h local time (Sun at -45°), transparent air. Lines from N(E,S,W) to zenith shown (crosses each 10°). Centered on ζ Herculis, which is 36° to the right from N, at 38° height. Detailed maps 50° vertically, the first four maps 100° . *Jan Hollan, CzechGlobe*



Maps for Globe at Night latitude -20° , 2023-06-14, 21 h local time (Sun at -48°), transparent air. Lines from N(E,S,W) to zenith shown (crosses each 10°). Centered on ζ Herculis, which is 32° to the right from N, at 30° height. Detailed maps 50° vertically, the first four maps 100° . *Jan Hollan, CzechGlobe*



Maps for Globe at Night latitude -30° , 2023-06-14, 21 h local time (Sun at -49°), transparent air. Lines from N(E,S,W) to zenith shown (crosses each 10°). Centered on ζ Herculis, which is 30° to the right from N, at 21° height. Detailed maps 50° vertically, the first four maps 100° . *Jan Hollan, CzechGlobe*