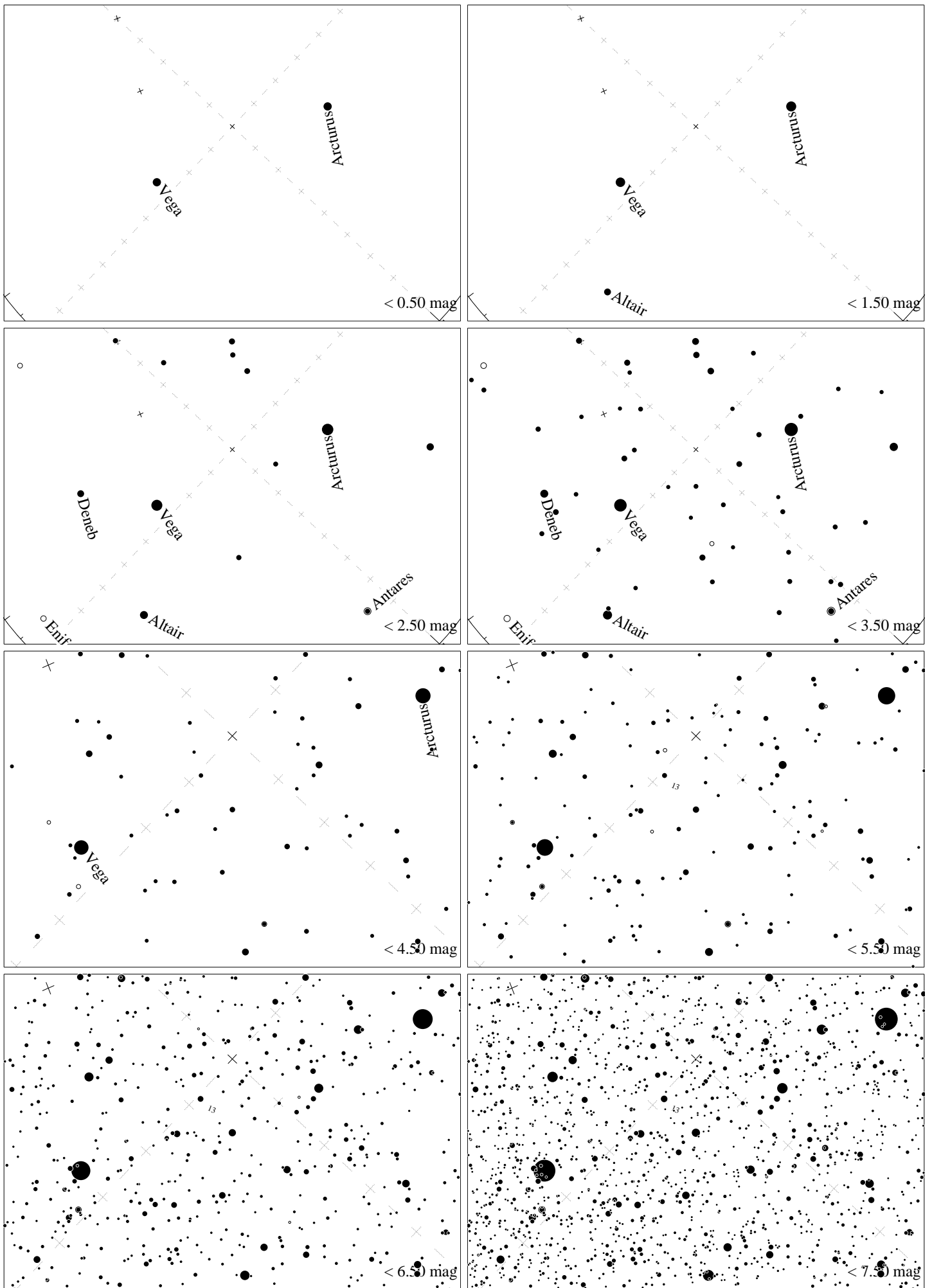
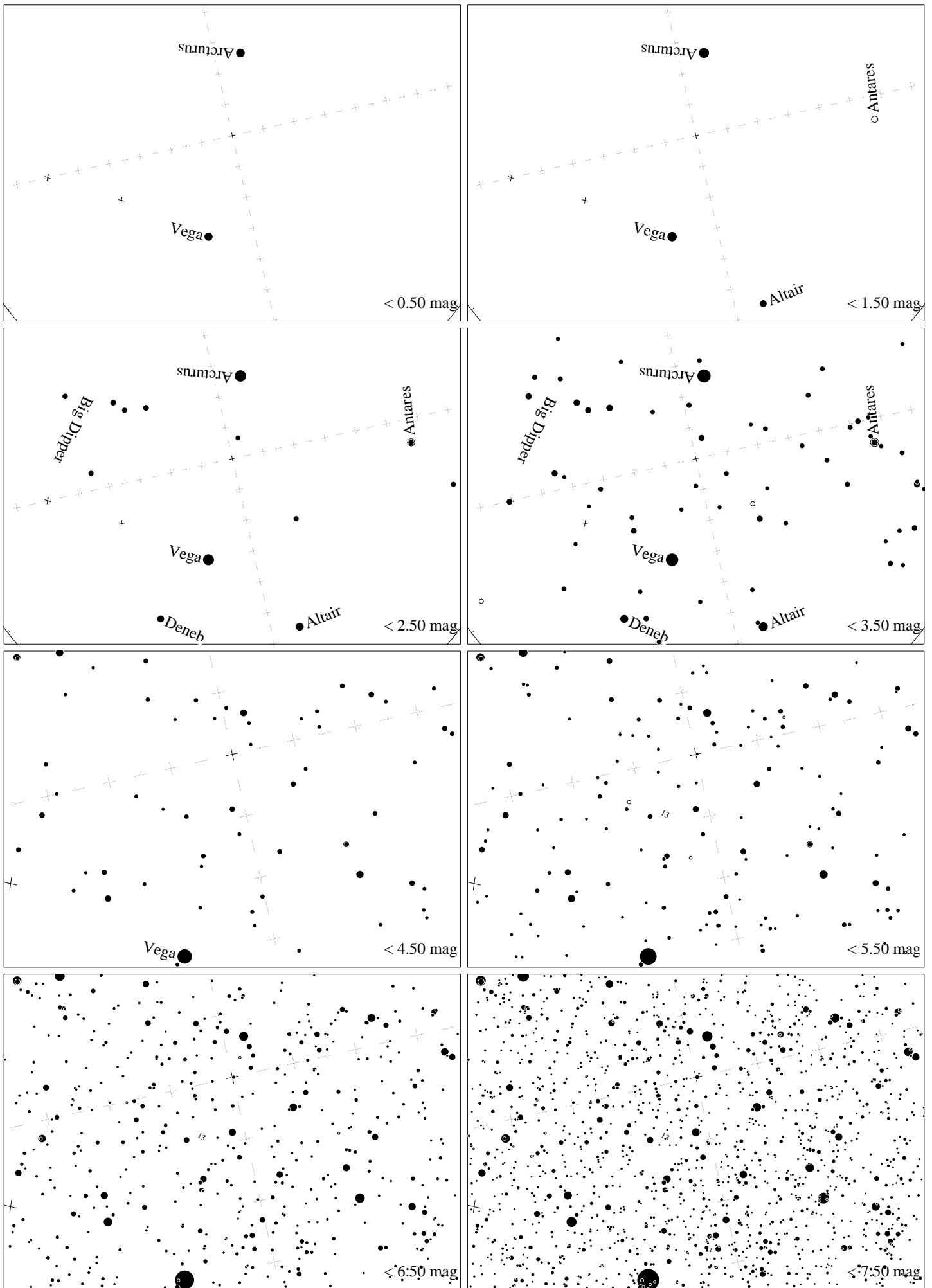


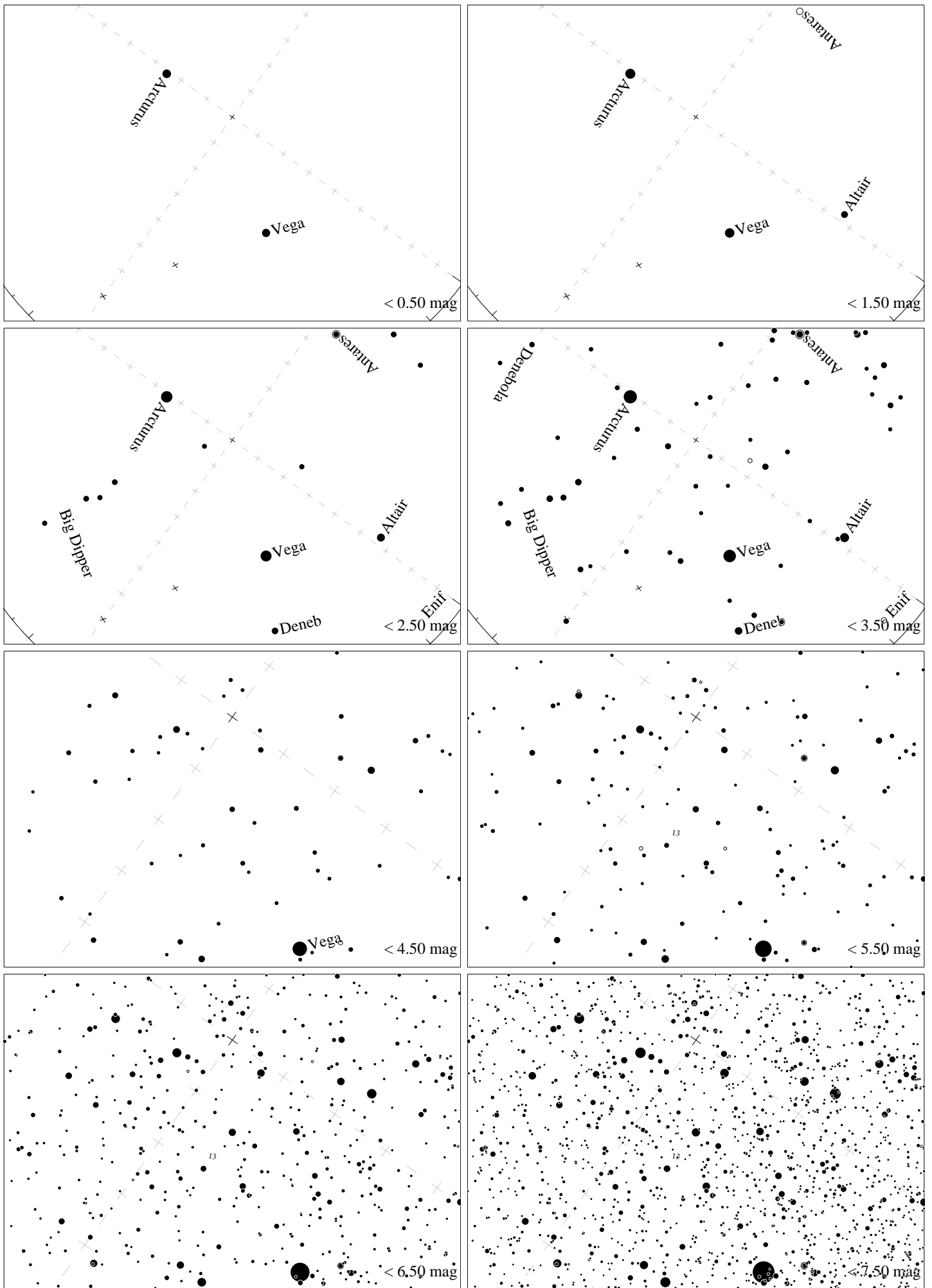
Maps for Globe at Night latitude 50° , 2023-07-07, 21 h local time (Sun at -7°), transparent air. Lines from N(E,S,W) to zenith shown (crosses each 10°). Centered on ζ Herculis, which is 26° to the left from S, at 70° height. Detailed maps 50° vertically, the first four maps 100° . *Jan Hollan, CzechGlobe*



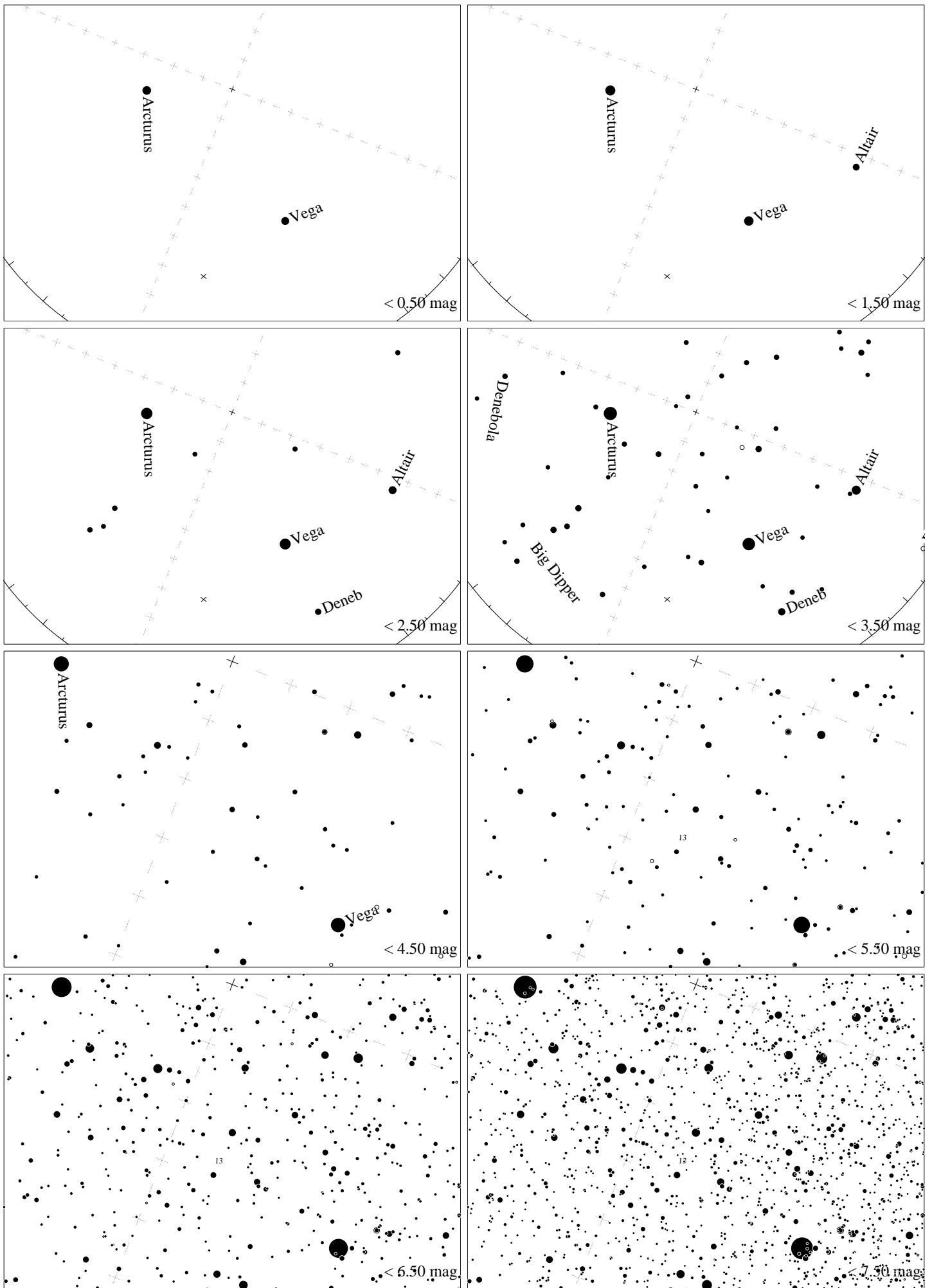
Maps for Globe at Night latitude 40° , 2023-07-07, 21 h local time (Sun at -14°), transparent air. Lines from N(E,S,W) to zenith shown (crosses each 10°). Centered on ζ Herculis, which is 47° to the left from S, at 78° height. Detailed maps 50° vertically, the first four maps 100° . *Jan Hollan, CzechGlobe*



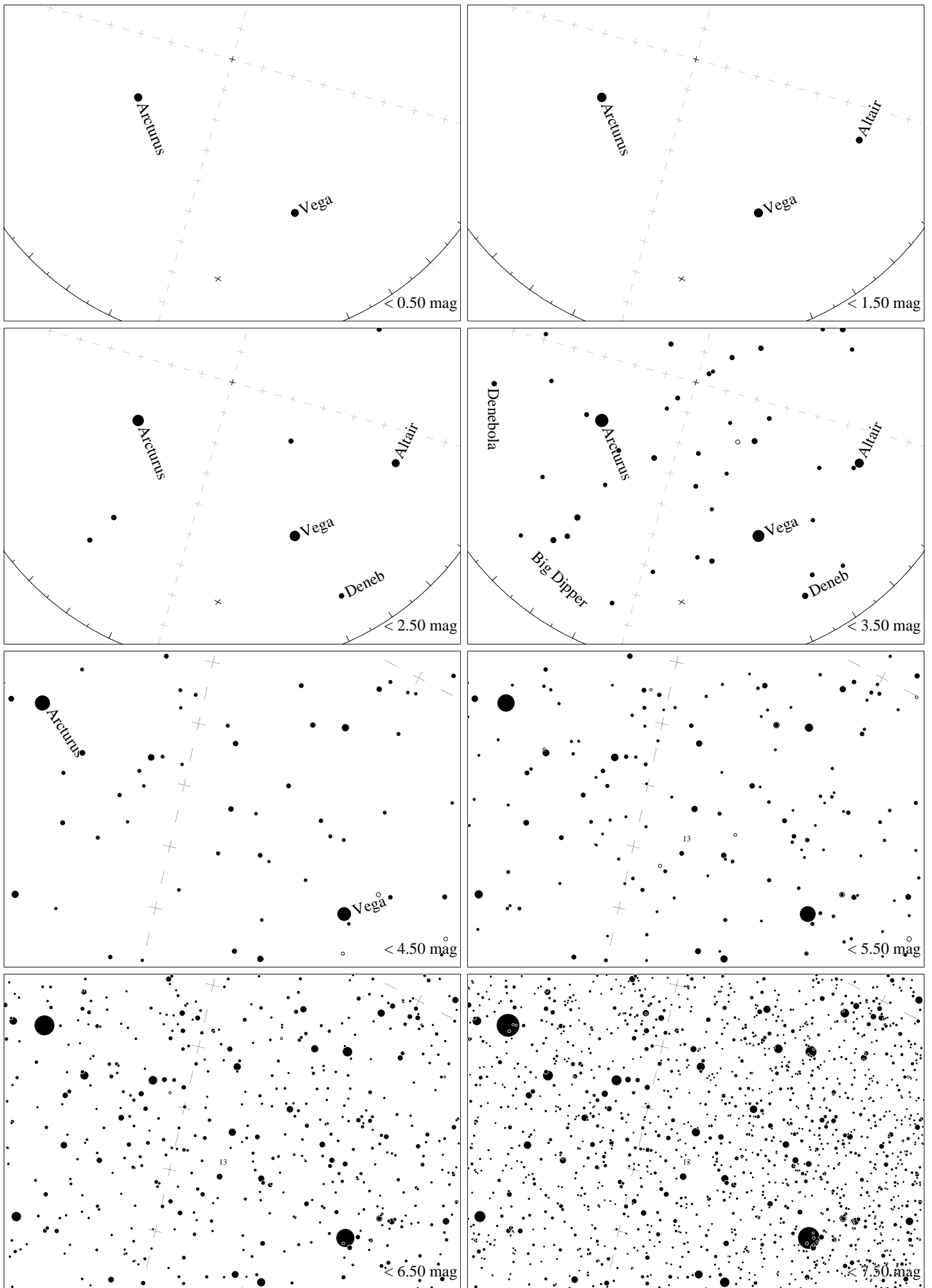
Maps for Globe at Night latitude 30° , 2023-07-07, 21 h local time (Sun at -21°), transparent air. Lines from N(E,S,W) to zenith shown (crosses each 10°). Centered on ζ Herculis, which is 77° to the right from N, at 81° height. Detailed maps 50° vertically, the first four maps 100° . *Jan Hollan, CzechGlobe*



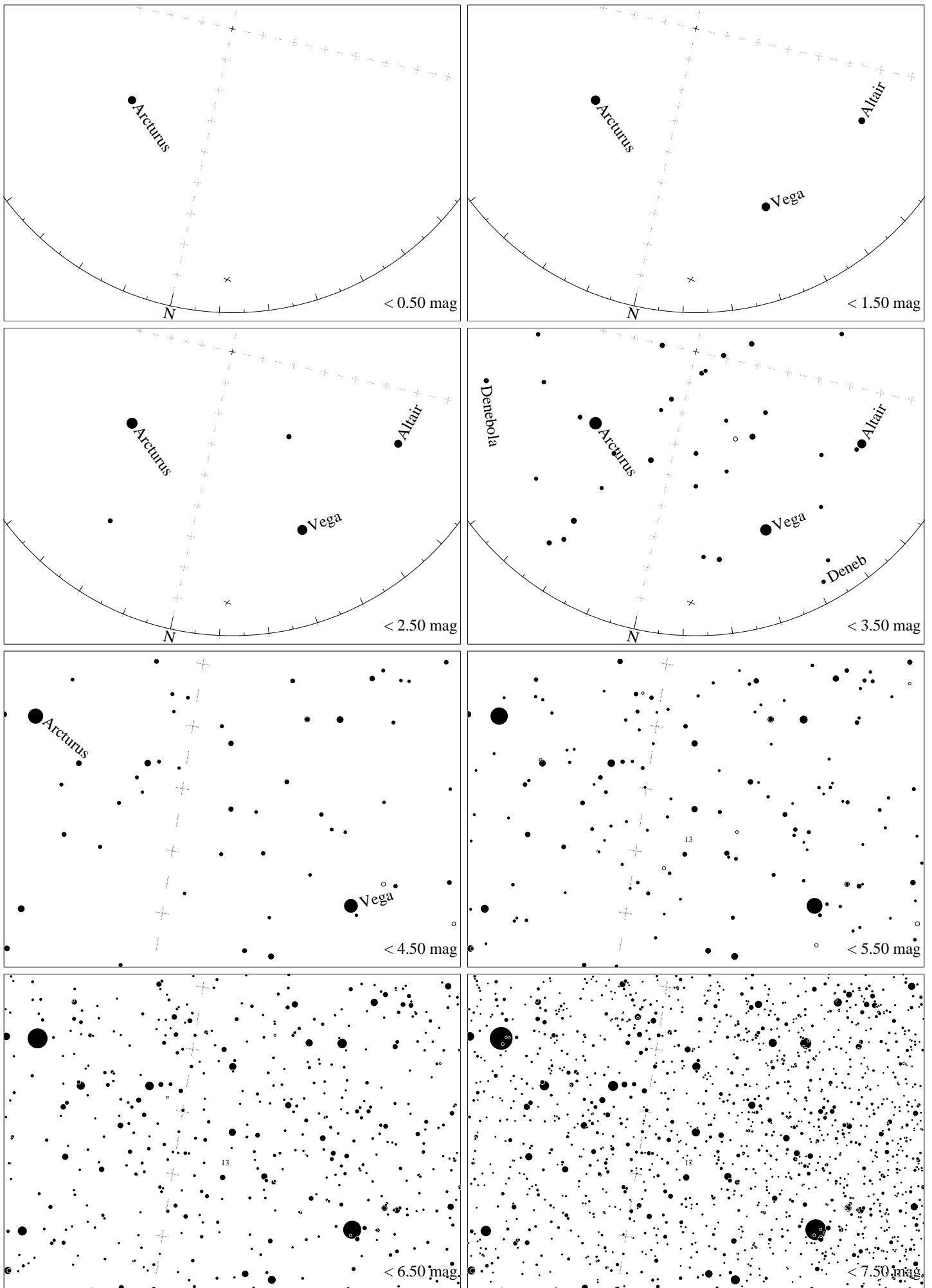
Maps for Globe at Night latitude 20° , 2023-07-07, 21 h local time (Sun at -28°), transparent air. Lines from N(E,S,W) to zenith shown (crosses each 10°). Centered on ζ Herculis, which is 36° to the right from N, at 75° height. Detailed maps 50° vertically, the first four maps 100° . *Jan Hollan, CzechGlobe*



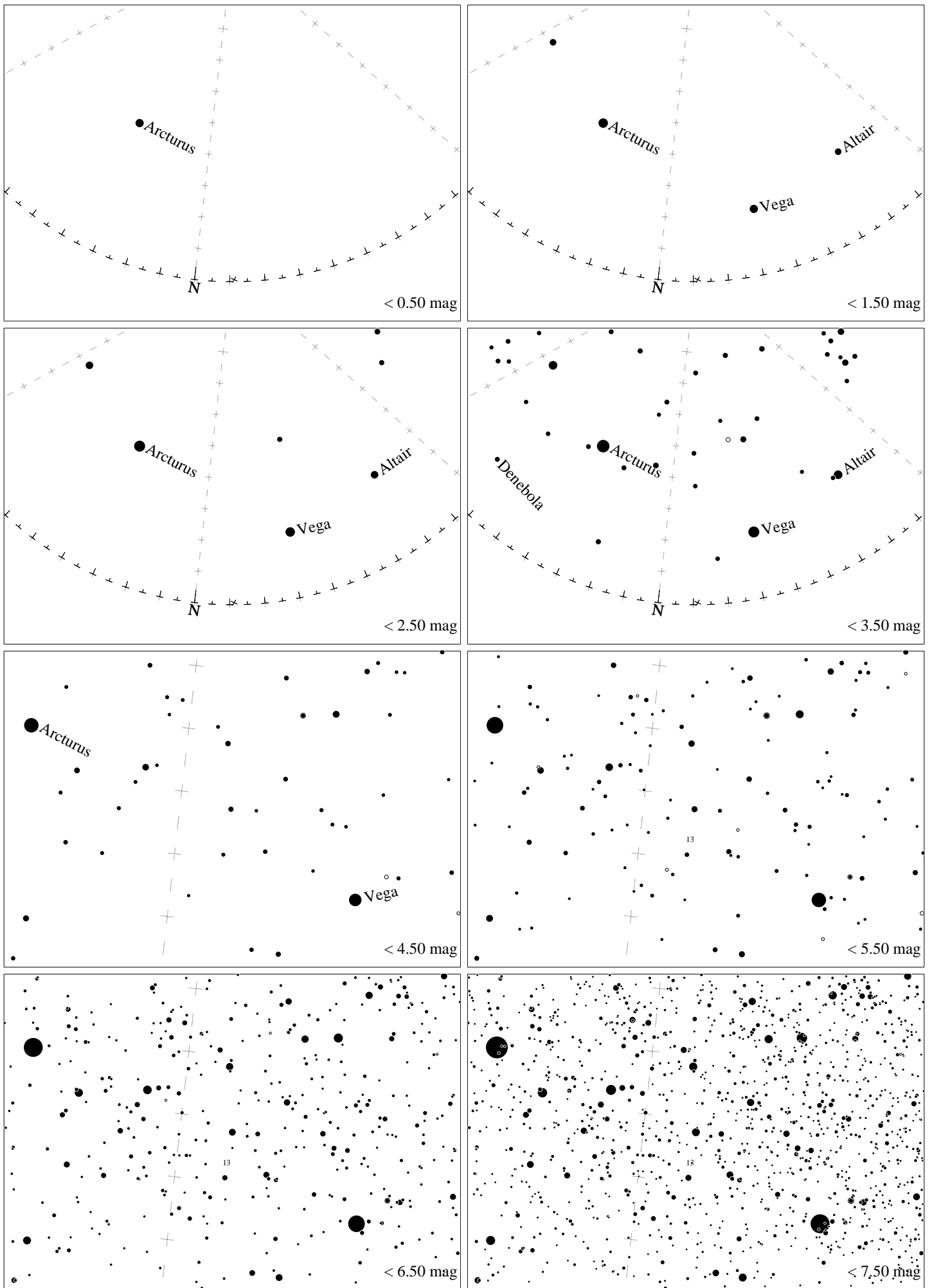
Maps for Globe at Night latitude 10° , 2023-07-07, 21 h local time (Sun at -34°), transparent air. Lines from N(E,S,W) to zenith shown (crosses each 10°). Centered on ζ Herculis, which is 22° to the right from N, at 67° height. Detailed maps 50° vertically, the first four maps 100° . *Jan Hollan, CzechGlobe*



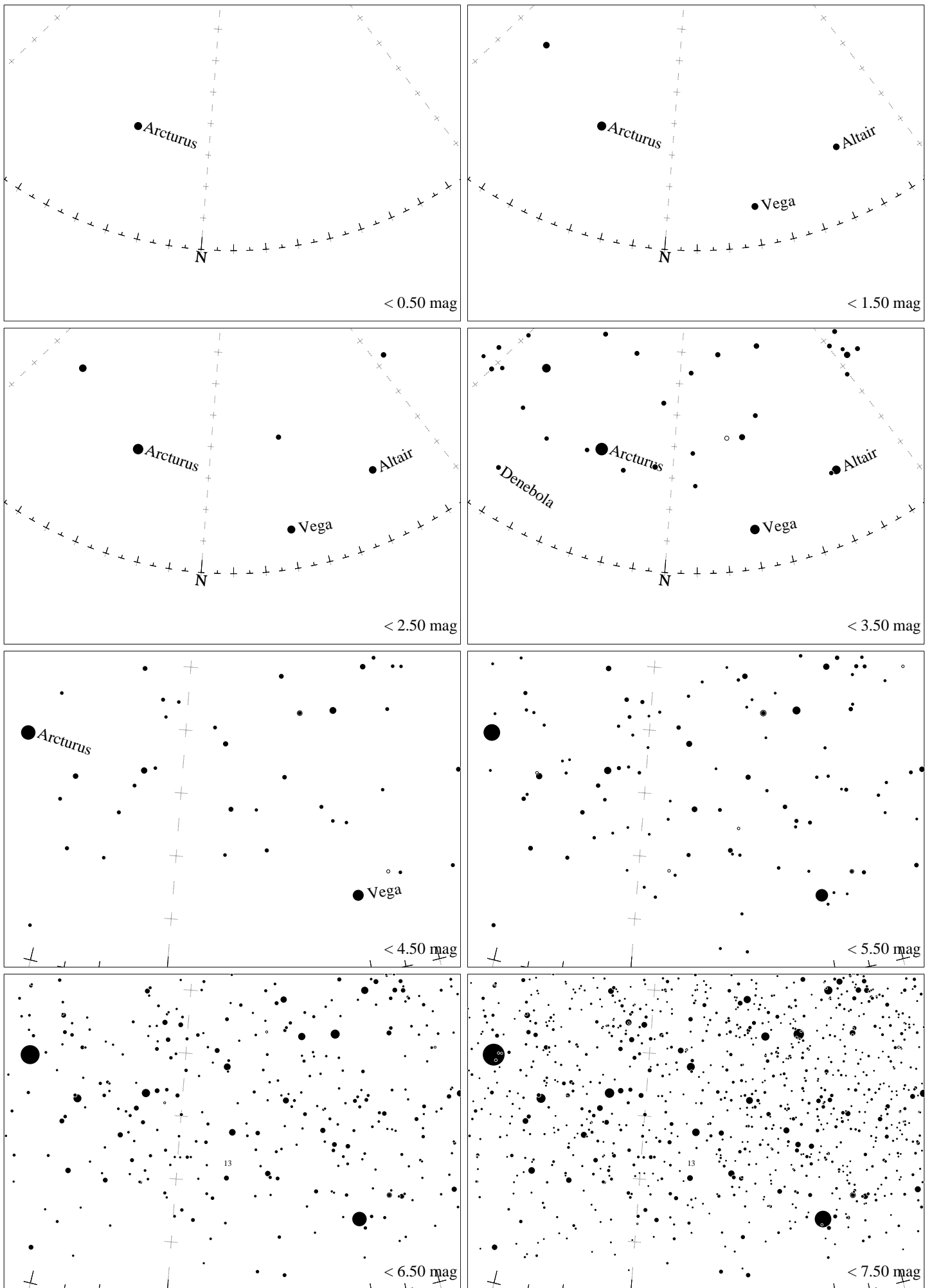
Maps for Globe at Night latitude 0° , 2023-07-07, 21 h local time (Sun at -40°), transparent air. Lines from N(E,S,W) to zenith shown (crosses each 10°). Centered on ζ Herculis, which is 16° to the right from N, at 57° height. Detailed maps 50° vertically, the first four maps 100° . *Jan Hollan, CzechGlobe*



Maps for Globe at Night latitude -10° , 2023-07-07, 21 h local time (Sun at -44°), transparent air. Lines from N(E,S,W) to zenith shown (crosses each 10°). Centered on ζ Herculis, which is 13° to the right from N, at 47° height. Detailed maps 50° vertically, the first four maps 100° . *Jan Hollan, CzechGlobe*



Maps for Globe at Night latitude -20° , 2023-07-07, 21 h local time (Sun at -47°), transparent air. Lines from N(E,S,W) to zenith shown (crosses each 10°). Centered on ζ Herculis, which is 11° to the right from N, at 38° height. Detailed maps 50° vertically, the first four maps 100° . *Jan Hollan, CzechGlobe*



Maps for Globe at Night latitude -30° , 2023-07-07, 21 h local time (Sun at -48°), transparent air. Lines from N(E,S,W) to zenith shown (crosses each 10°). Centered on ζ Herculis, which is 10° to the right from N, at 28° height. Detailed maps 50° vertically, the first four maps 100° . *Jan Hollan, CzechGlobe*