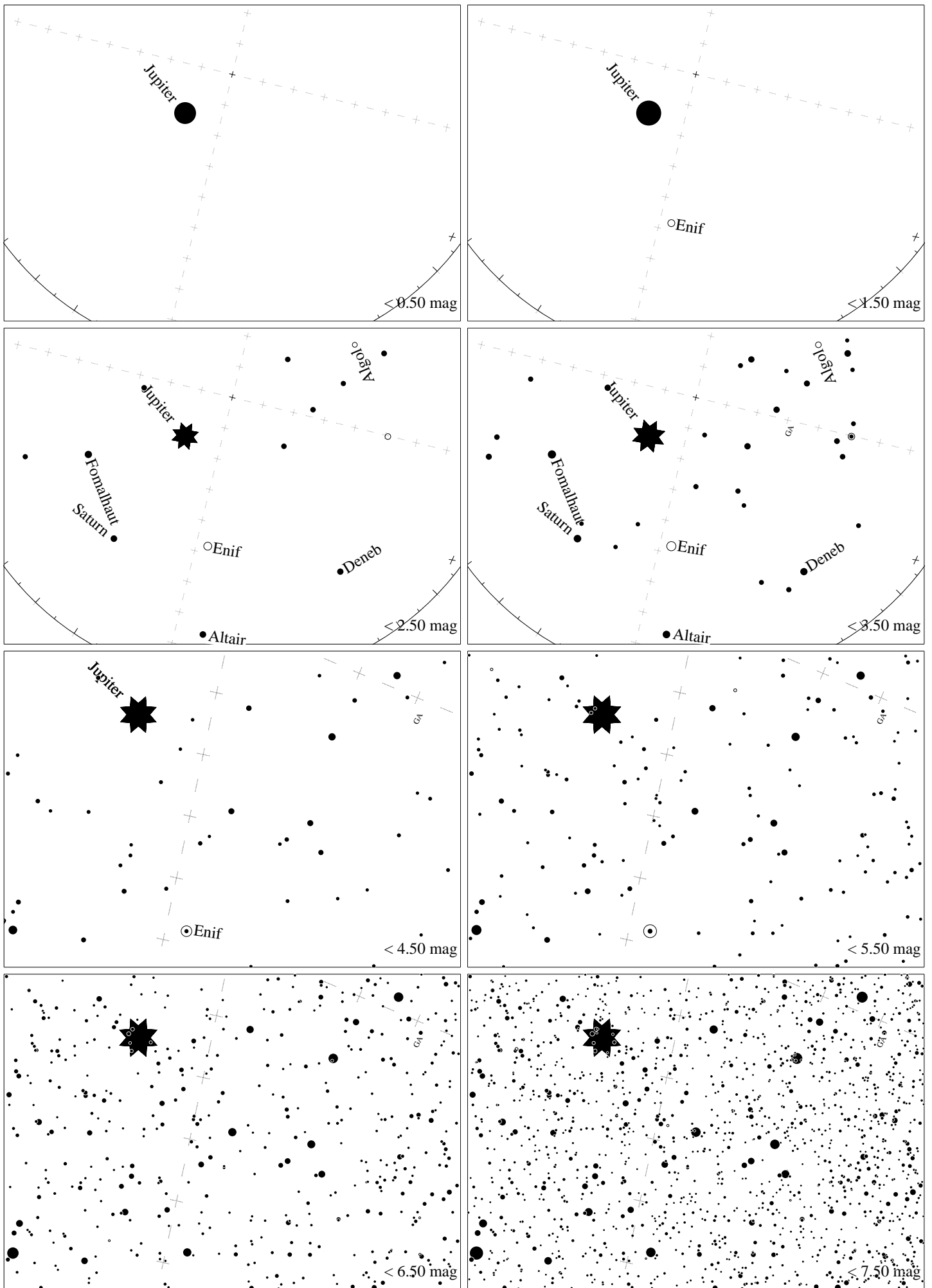
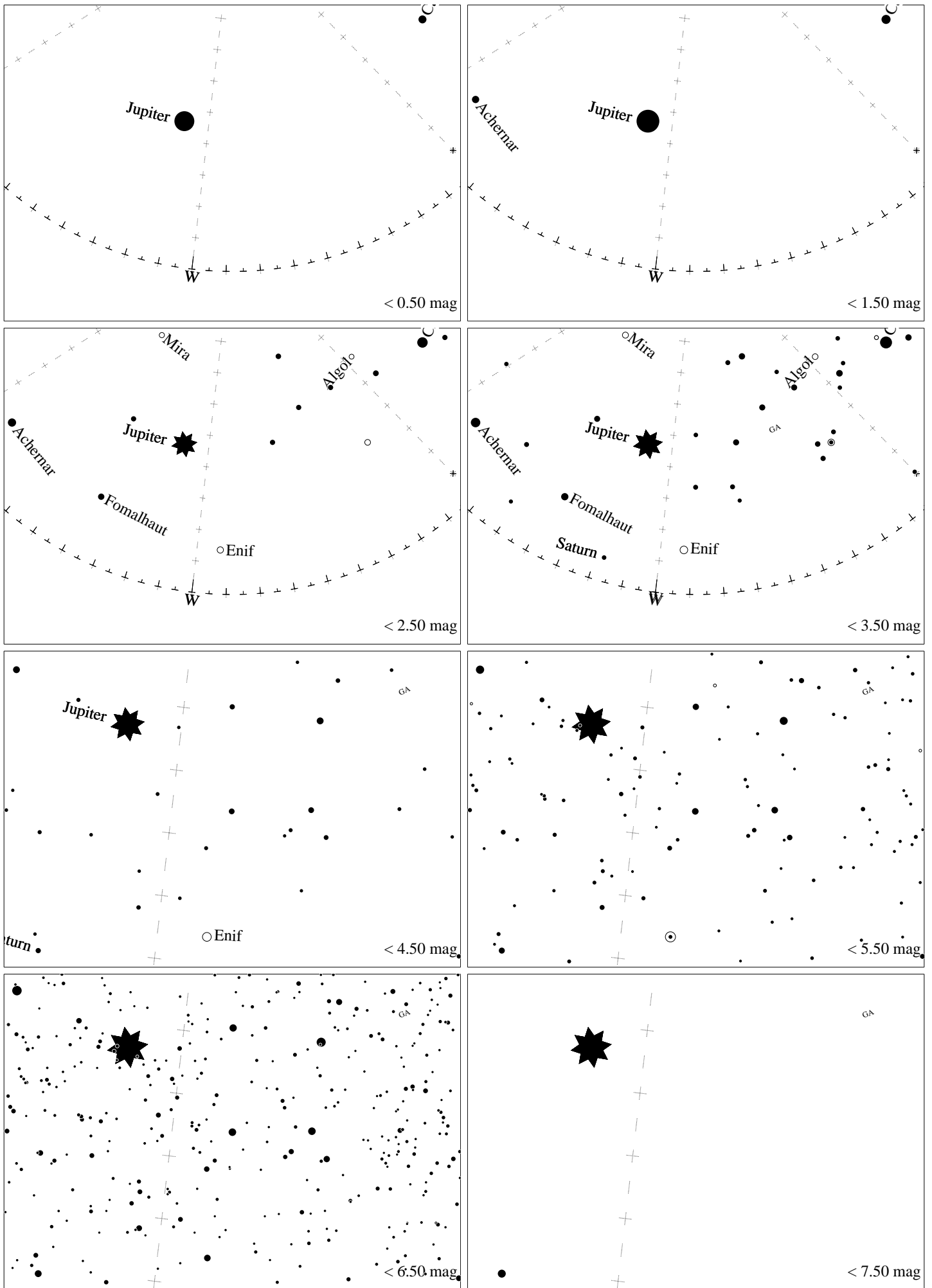


Maps for Globe at Night latitude 10° , 2022-10-21, 21 h local time (Sun at -50°), transparent air. Lines from N(E,S,W) to zenith shown (crosses each 10°). The map is centered on Markab (α Pegasi), which is 12° to the right from N, at 85° height. Detailed maps 50° vertically, the first four maps 100° . *Jan Hollan, CzechGlobe*



Maps for Globe at Night latitude 10° , 2022-11-20, 21 h local time (Sun at -49°), transparent air. Lines from N(E,S,W) to zenith shown (crosses each 10°). The map is centered on Markab (α Pegasi), which is 76° to the left from N, at 62° height. Detailed maps 50° vertically, the first four maps 100° . *Jan Hollan, CzechGlobe*



Maps for Globe at Night latitude 10° , 2022-12-19, 21 h local time (Sun at -46°), transparent air. Lines from N(E,S,W) to zenith shown (crosses each 10°). The map is centered on Markab (α Pegasi), which is 78° to the left from N, at 34° height. Detailed maps 50° vertically, the first four maps 100° . *Jan Hollan, CzechGlobe*