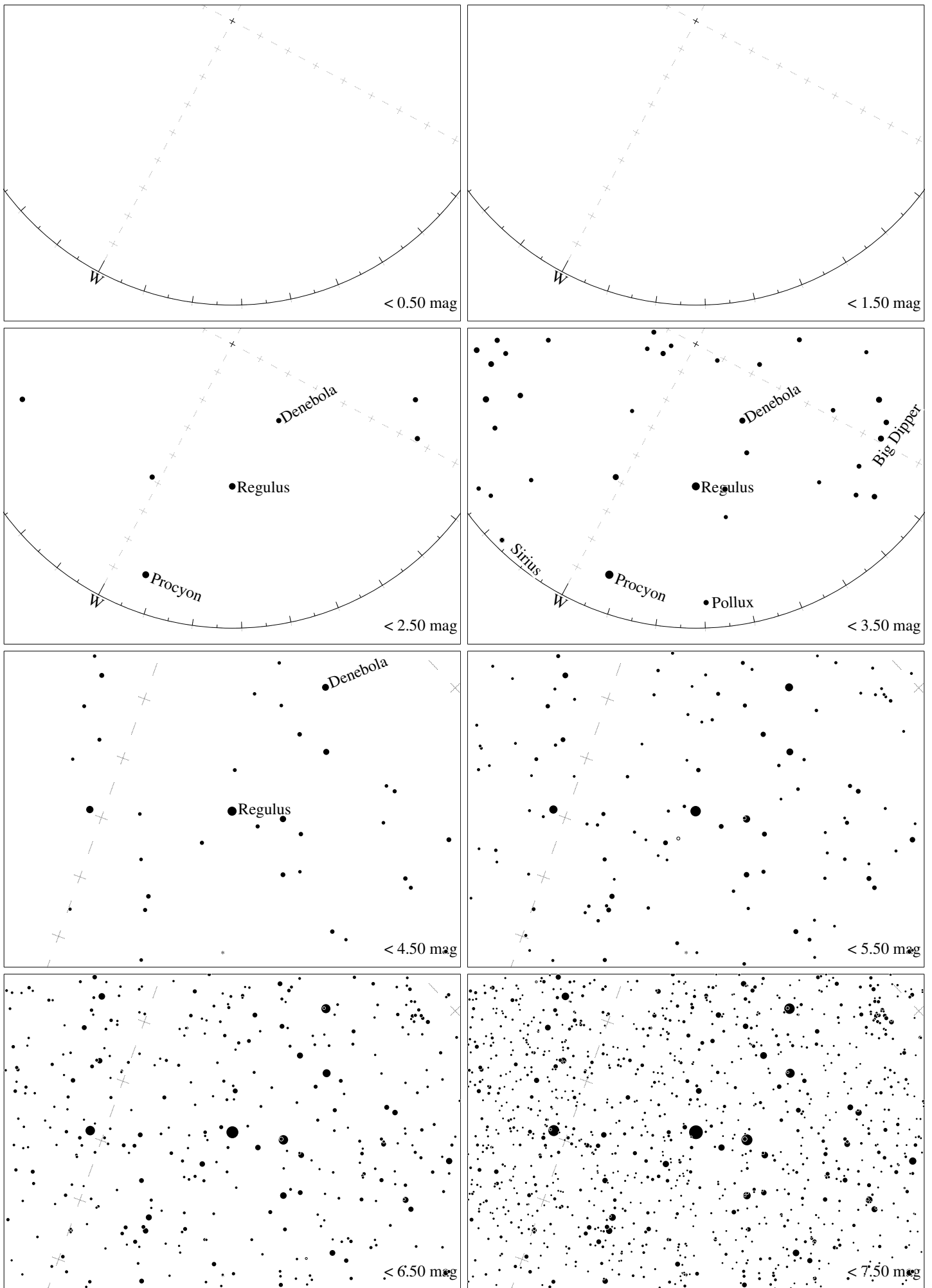


Maps for Globe at Night at latitude -10° , 2020-04-18, 21 h local time (Sun at -46°), transparent air. Lines from N(E,S,W) to zenith shown (crosses each 10°). Regulus (α Leonis) is 25° to the left from N, at 66° height. Detailed maps 50° vertically, the first four maps 100° . *Jan Hollan maps, CzechGlobe*



Maps for Globe at Night at latitude -10° , 2020-05-18, 21 h local time (Sun at -46°), transparent air. Lines from N(E,S,W) to zenith shown (crosses each 10°). Regulus (α Leonis) is 62° to the left from N, at 45° height. Detailed maps 50° vertically, the first four maps 100° . *Jan Hollan maps, CzechGlobe*