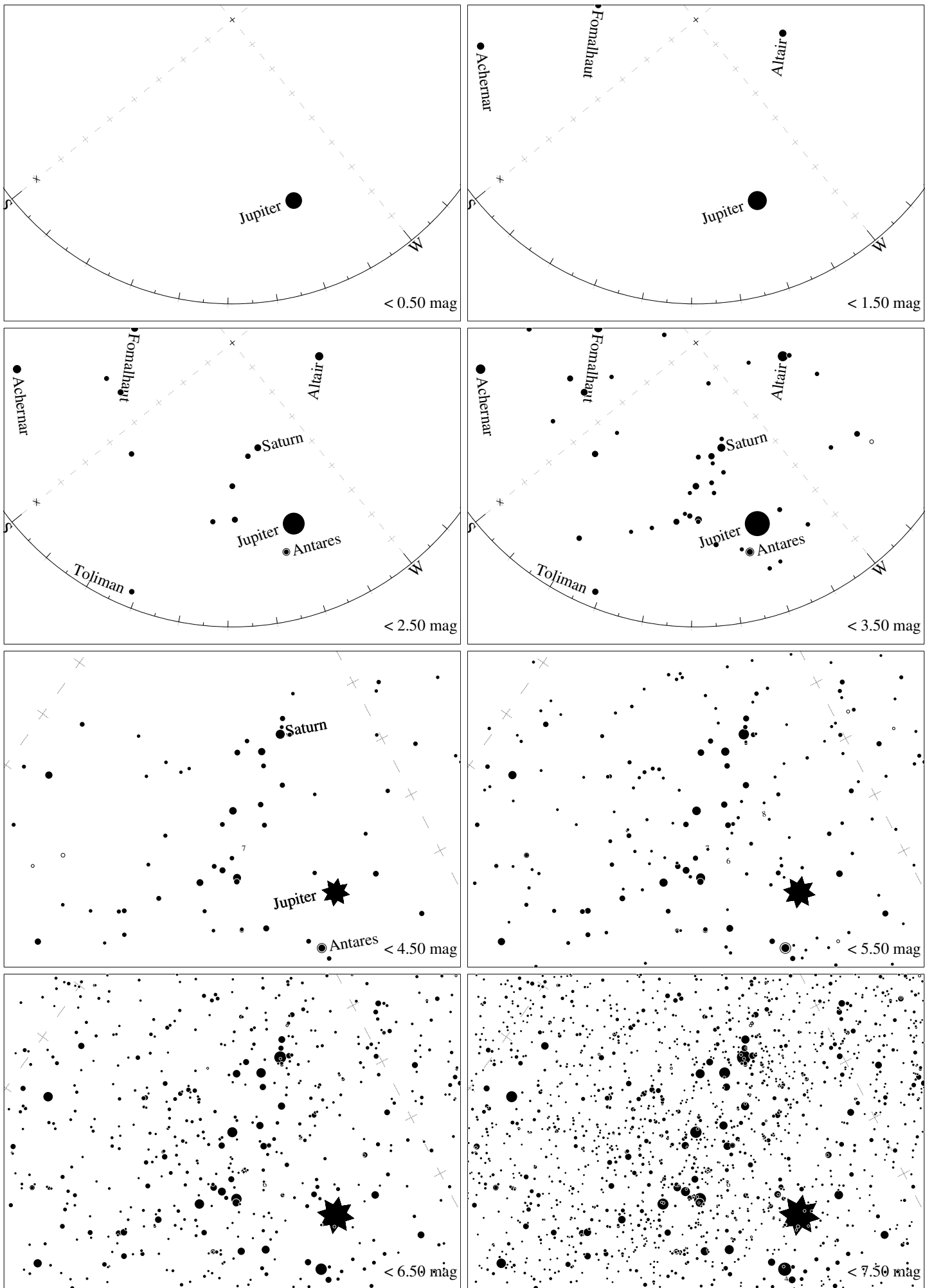


Maps for Globe at Night latitude -10° , 2019-08-26, 21 h local time (Sun at -45°), transparent air. Lines from N(E,S,W) to zenith shown (crosses each 10°). Centered on Kaus Australis (ϵ Sagittarii), which is 25° to the right from S, at 63° height. Detailed maps 50° vertically, the first four maps 100° . Jan Hollan, CzechGlobe



Maps for Globe at Night latitude -10° , 2019-09-24, 21 h local time (Sun at -46°), transparent air. Lines from N(E,S,W) to zenith shown (crosses each 10°). Centered on Kaus Australis (ϵ Sagittarii), which is 51° to the right from S, at 45° height. Detailed maps 50° vertically, the first four maps 100° . Jan Hollan, CzechGlobe