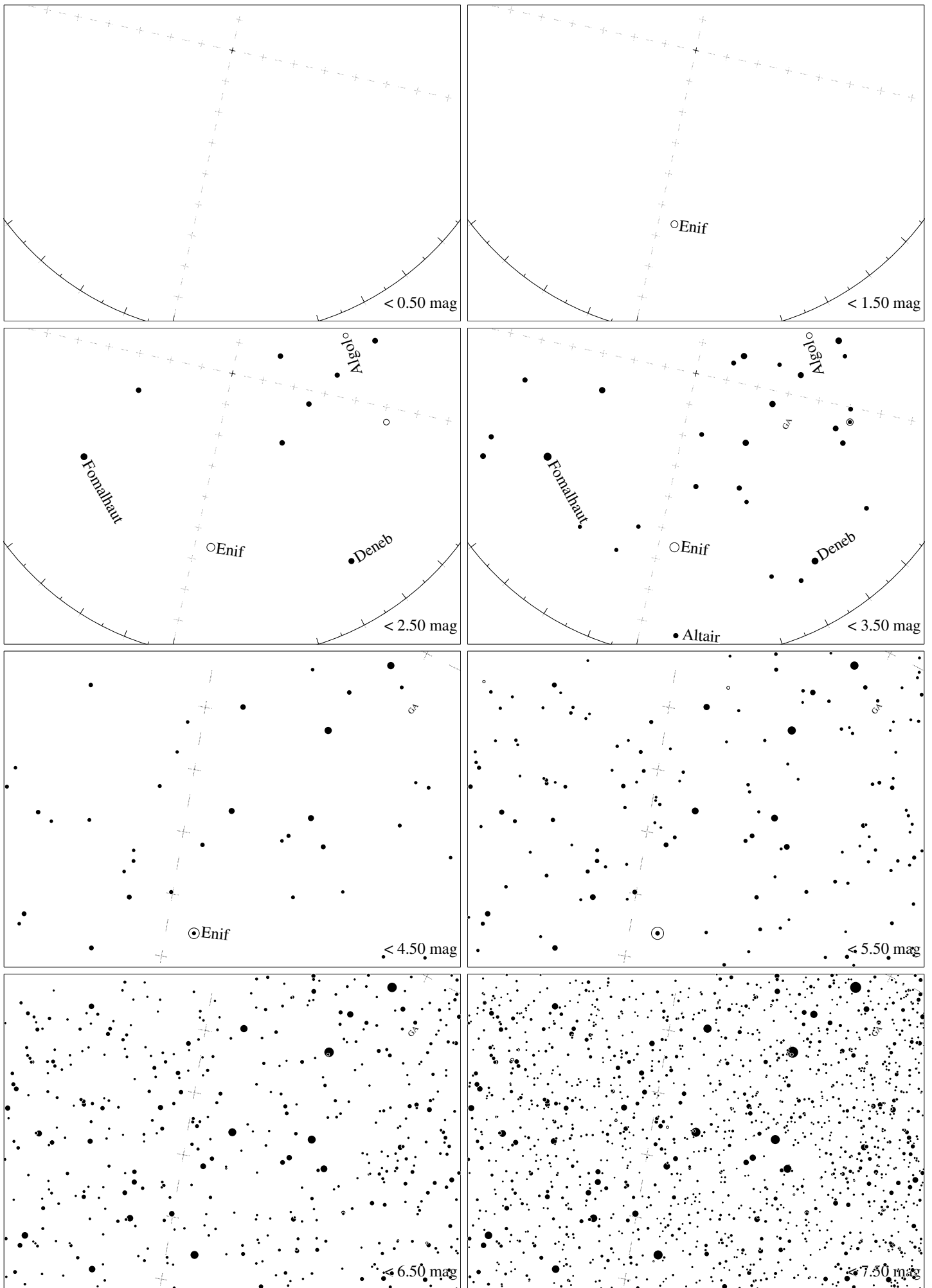


Maps for Globe at Night latitude  $10^\circ$ , 2017-11-14, 21 h local time (Sun at  $-49^\circ$ ), transparent air. Lines from N(E,S,W) to zenith shown (crosses each  $10^\circ$ ). The map is centered on Markab ( $\alpha$  Pegasi), which is  $74^\circ$  to the left from N, at  $67^\circ$  height. Detailed maps  $50^\circ$  vertically, the first four maps  $100^\circ$ . *Jan Hollan, CzechGlobe*



Maps for Globe at Night latitude  $10^\circ$ , 2017-12-13, 20 h local time (Sun at  $-33^\circ$ ), transparent air. Lines from N(E,S,W) to zenith shown (crosses each  $10^\circ$ ). The map is centered on Markab ( $\alpha$  Pegasi), which is  $78^\circ$  to the left from N, at  $54^\circ$  height. Detailed maps  $50^\circ$  vertically, the first four maps  $100^\circ$ . *Jan Hollan, CzechGlobe*