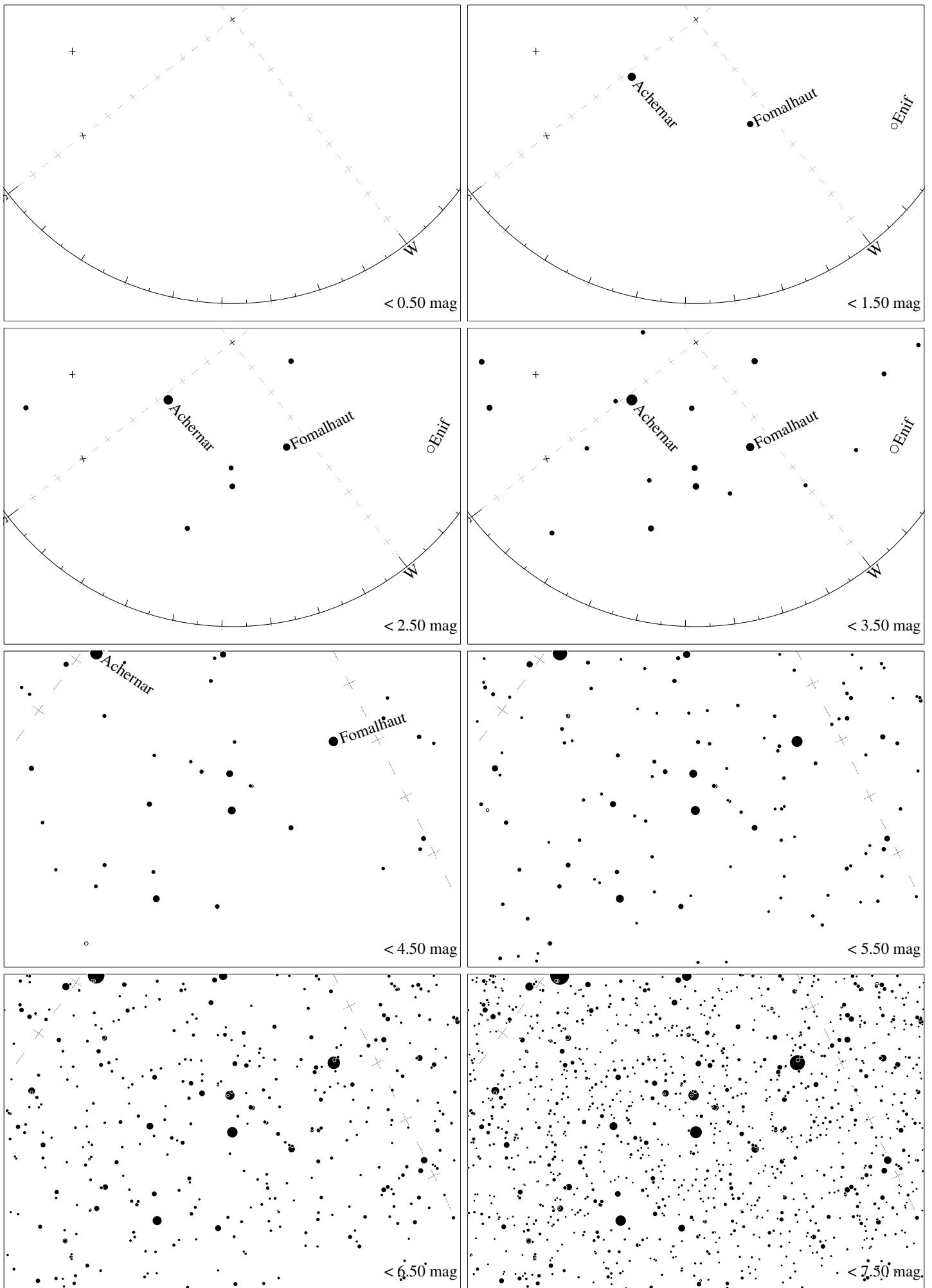


Maps for Globe at Night latitude -30° , 2017-11-03, 21:30 h local time (Sun at -30°), transparent air. Lines from N(E,S,W) to zenith shown (crosses each 10°). Centered on Altair (α Gruis), which is 43° to the right from S, at 64° height. Detailed maps 50° vertically, the first four maps 100° . *Jan Hollan, CzechGlobe*



Maps for Globe at Night latitude -30° , 2017-12-03, 21:30 h local time (Sun at -24°), transparent air. Lines from N(E,S,W) to zenith shown (crosses each 10°). Centered on Alnair (α Gruis), which is 52° to the right from S, at 44° height. Detailed maps 50° vertically, the first four maps 100° . *Jan Hollan, CzechGlobe*