

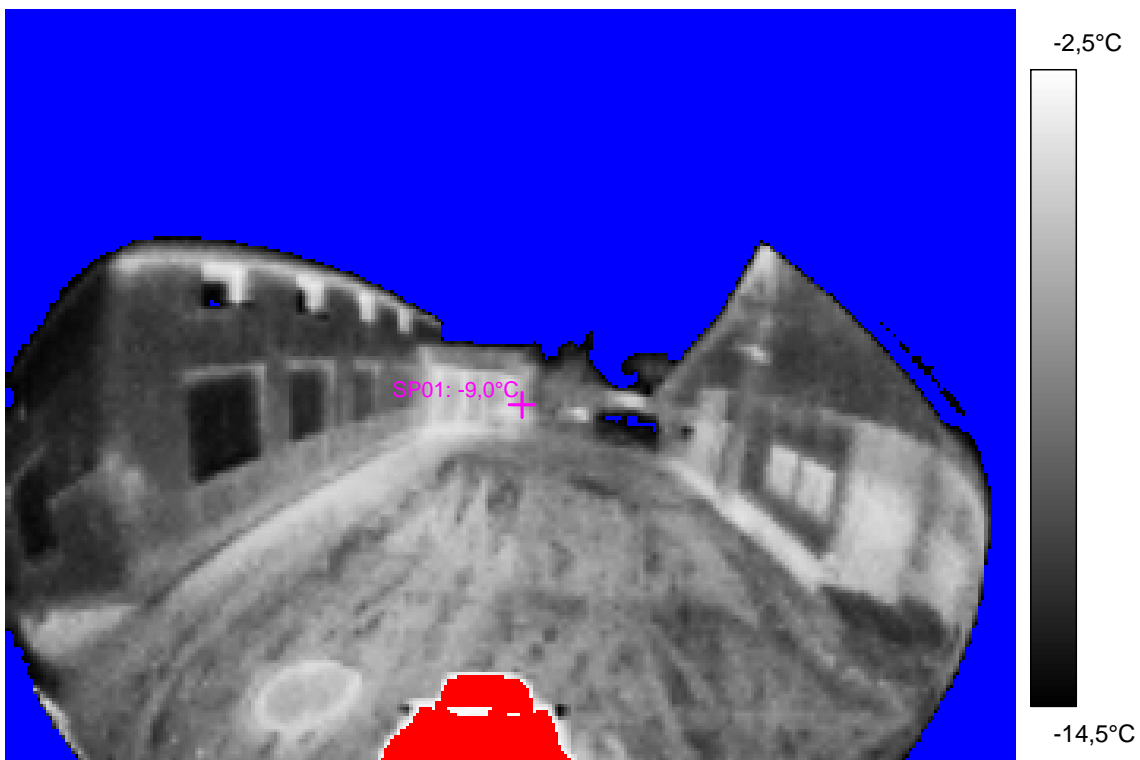
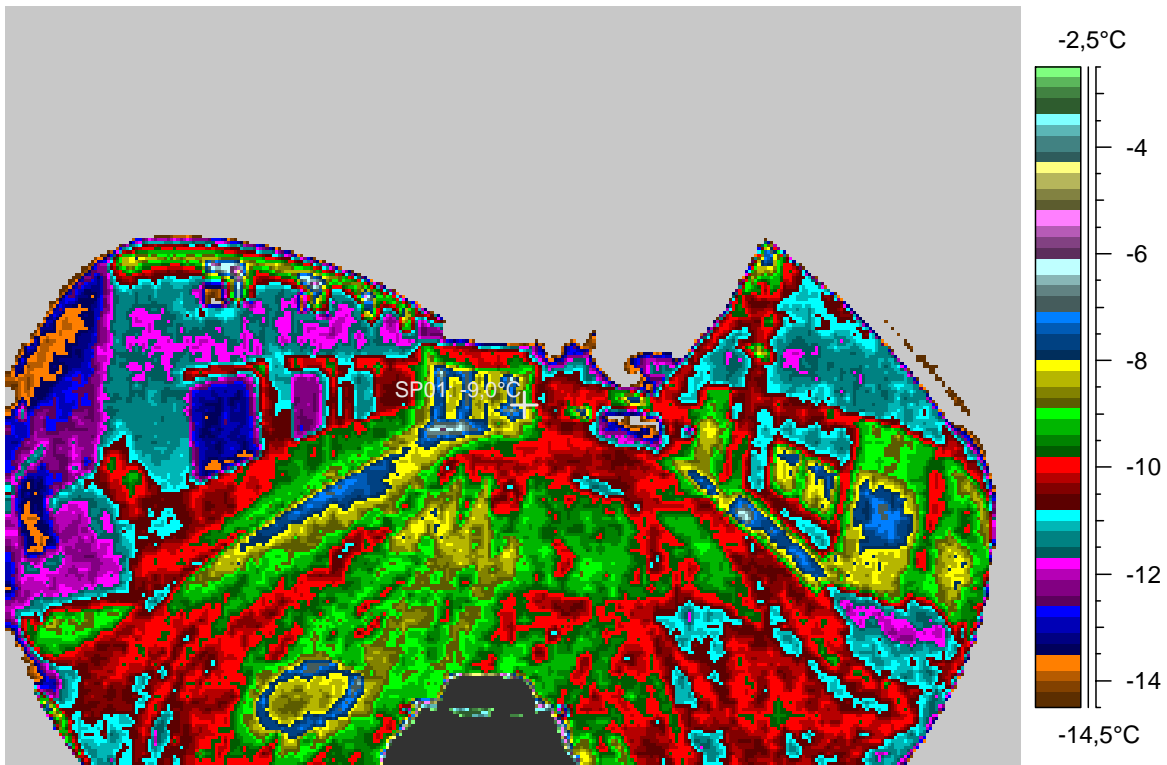
Passive house of the Centre at left, apple-juice manufacture at right. In a concave mirror.

# 1 - Ir\_1277.jpg

Label	Value
IR : max	20,5°C
IR : min	<-30,0°C
SP01	-9,0°C

3.1.2008

22:12:28



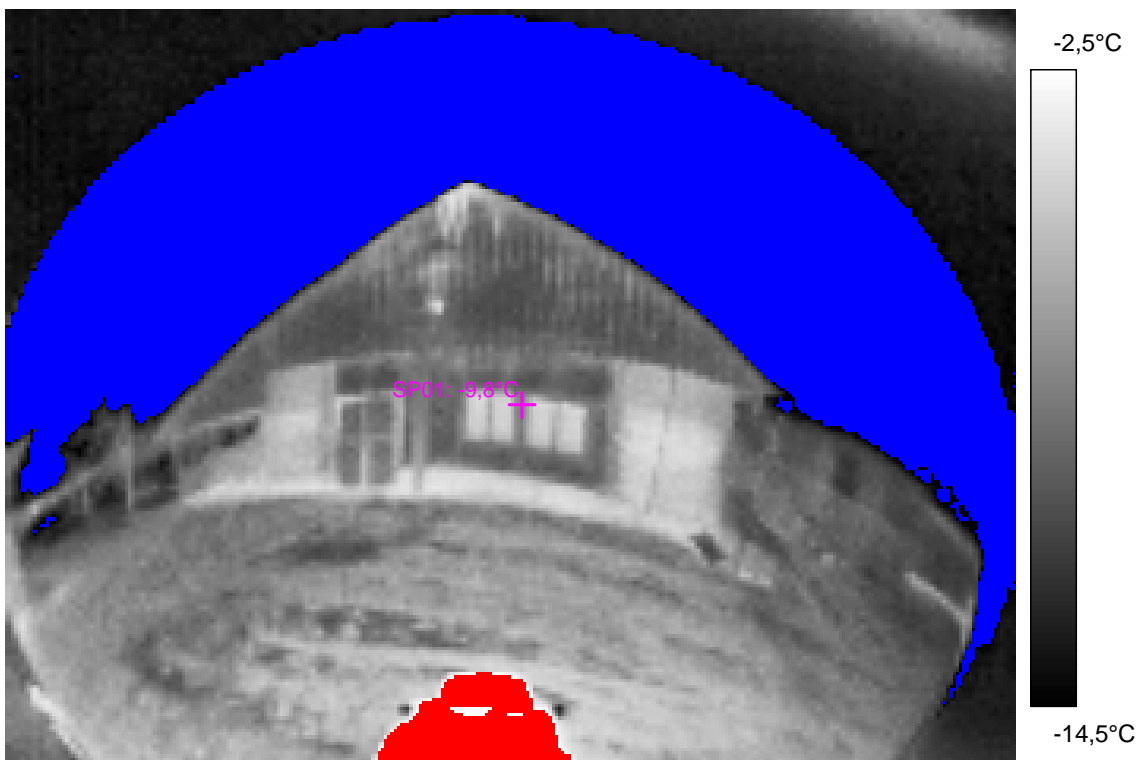
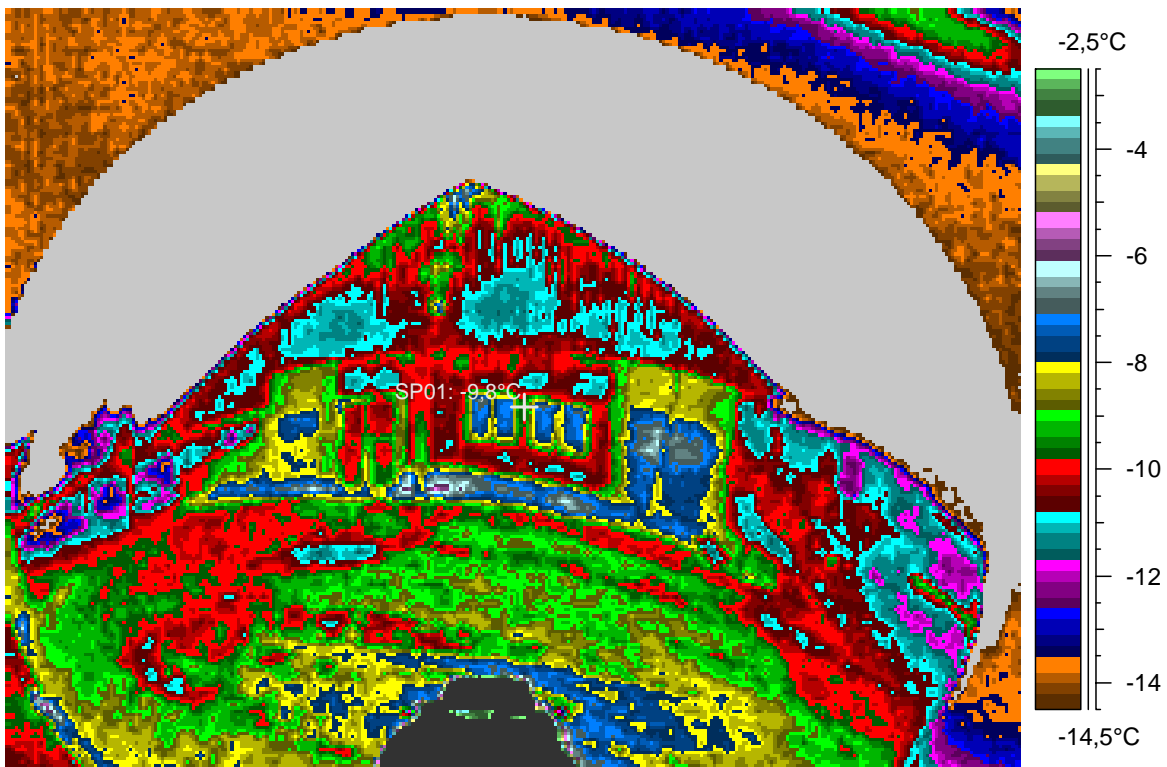
The apple-juice manufacture. Stock of bottles at right.

## 2 - Ir\_1278.jpg

Label	Value
IR : max	22,4°C
IR : min	<-30,0°C
SP01	-9,8°C

3.1.2008

22:12:43



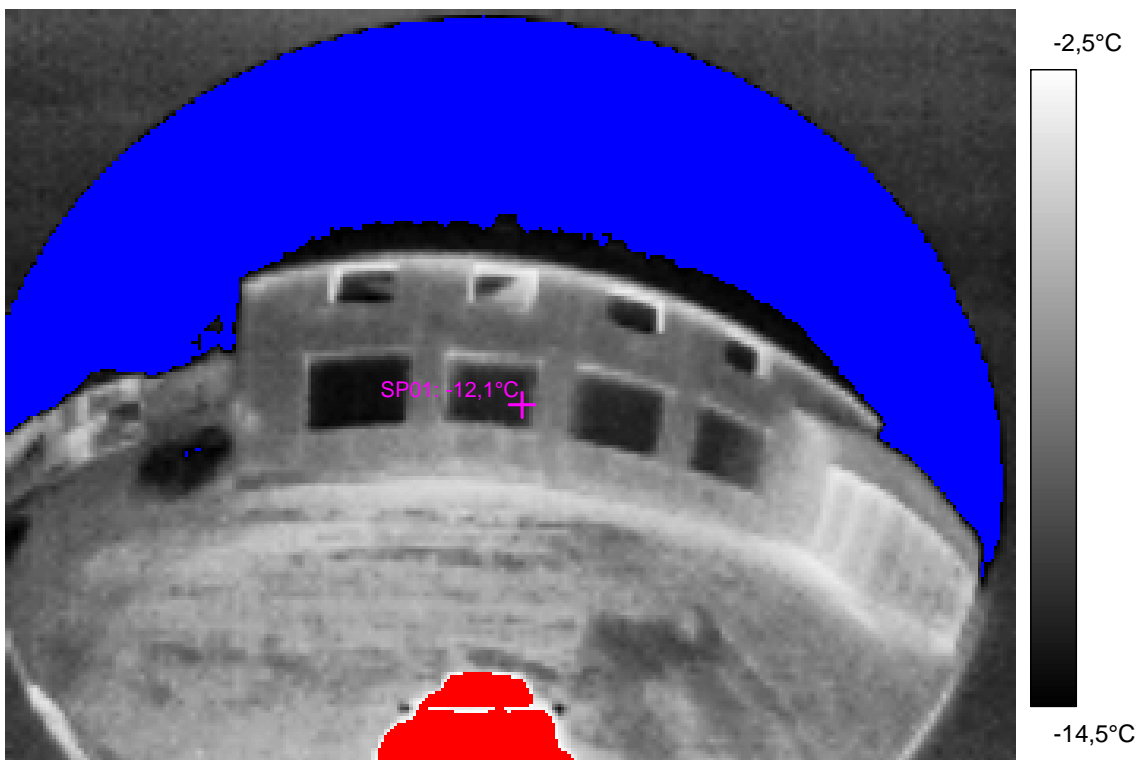
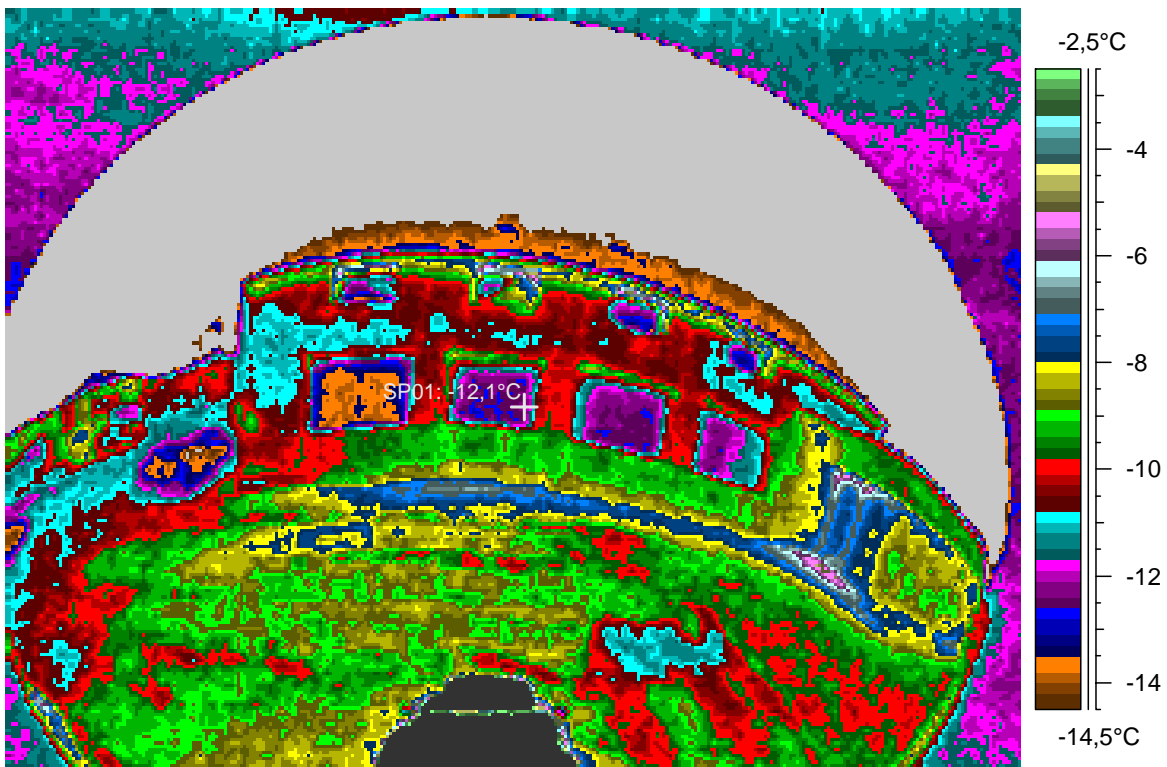
The large windows are covered by venetian blinds probably.

### 3 - Ir\_1279.jpg

Label	Value
IR : max	23,8°C
IR : min	<-30,0°C
SP01	-12,1°C

3.1.2008

22:12:59



comments:

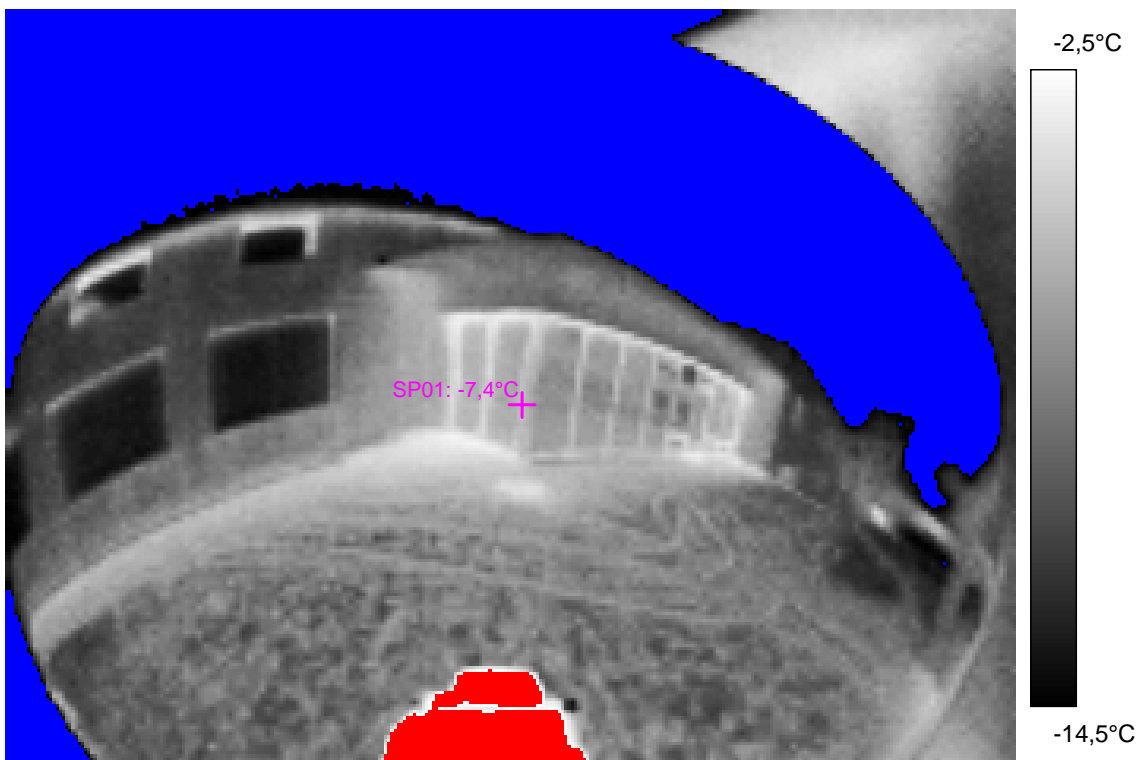
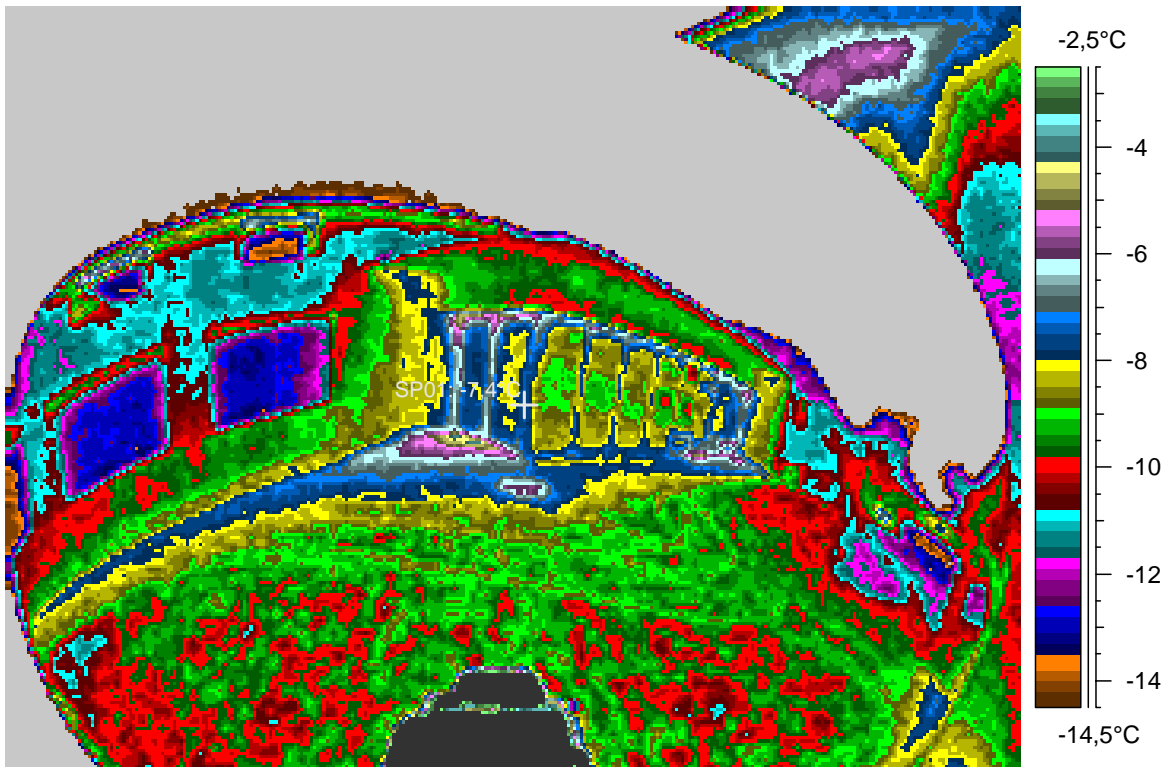
blabla

## 4 - Ir\_1280.jpg

Label	Value
IR : max	23,3°C
IR : min	<-30,0°C
SP01	-7,4°C

3.1.2008

22:13:25



comments:

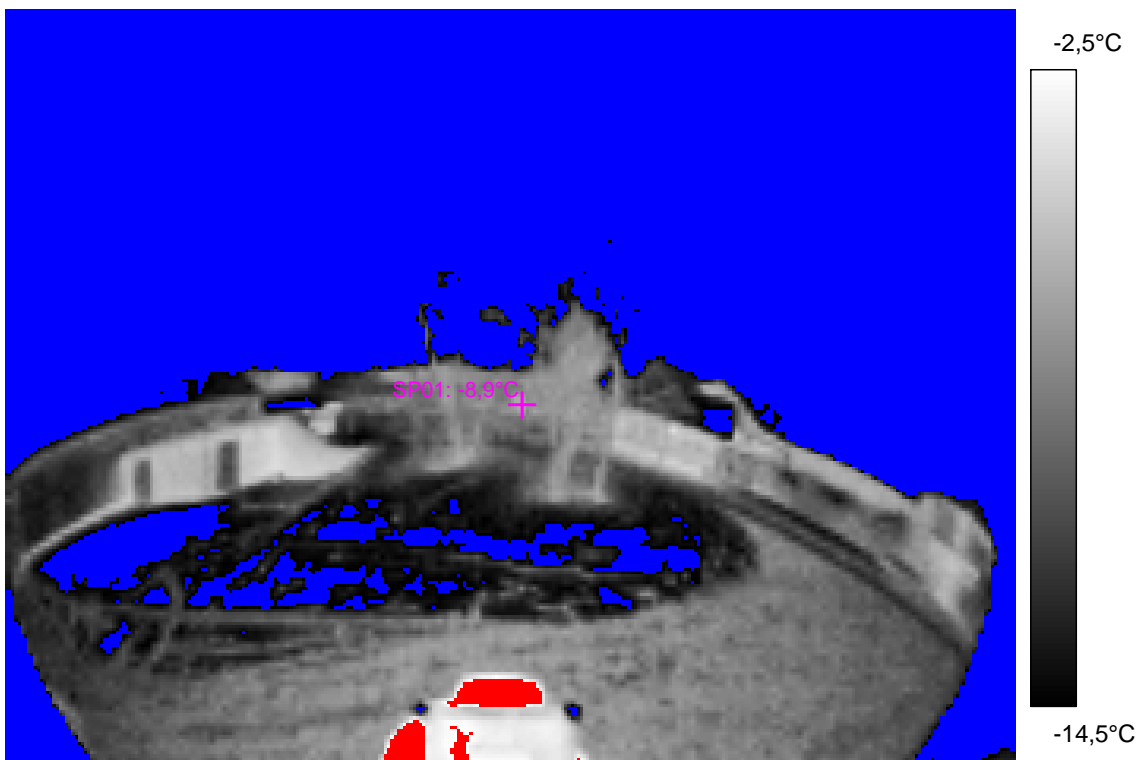
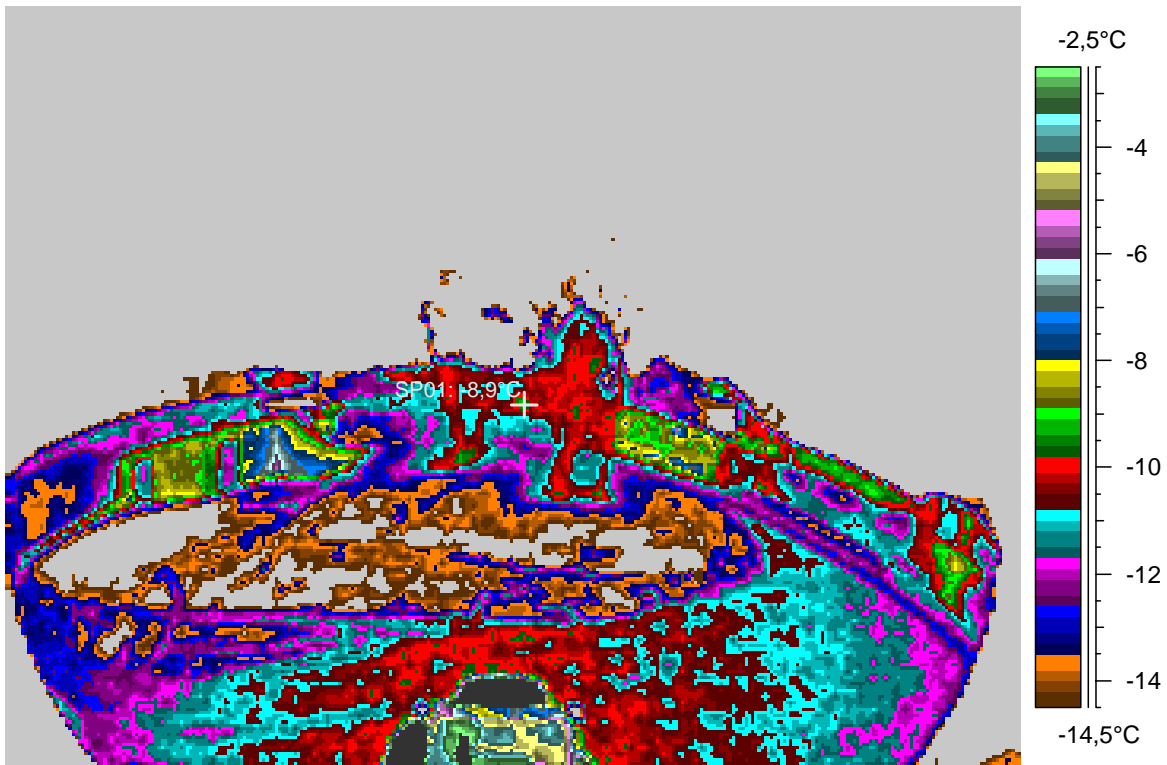
blabla

## 5 - Ir\_1281.jpg

Label	Value
IR : max	22,1°C
IR : min	<-30,0°C
SP01	-8,9°C

3.1.2008

22:15:09



comments:

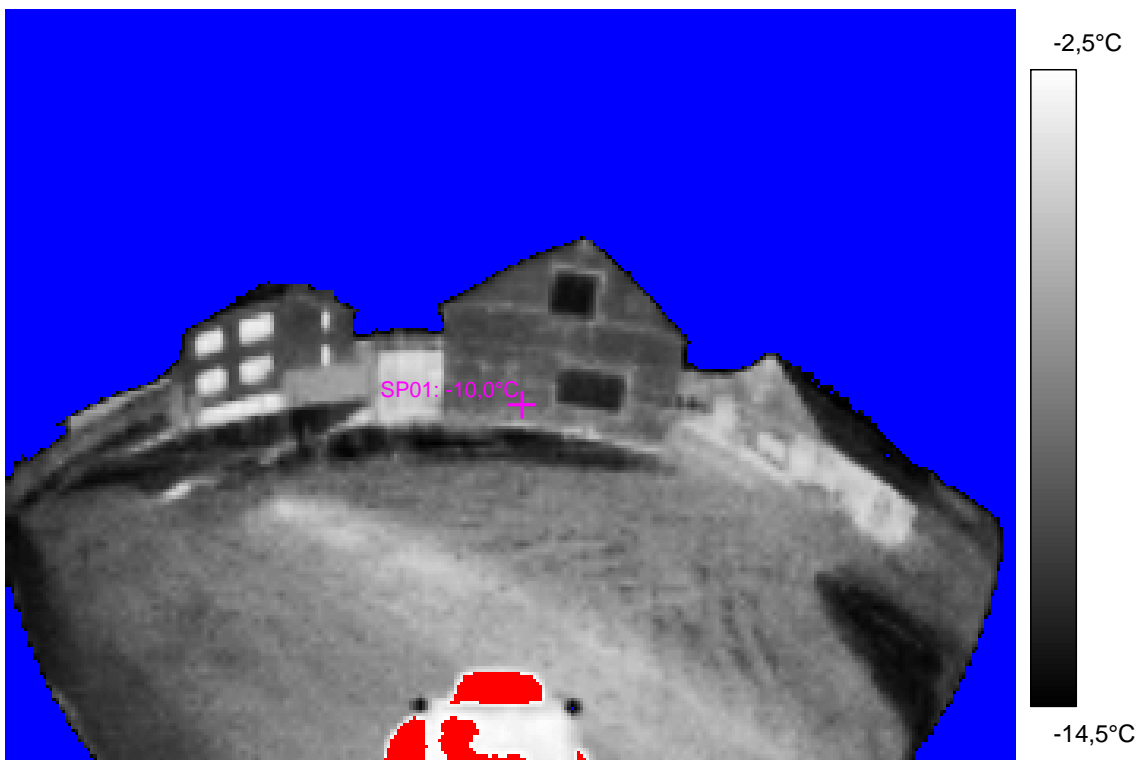
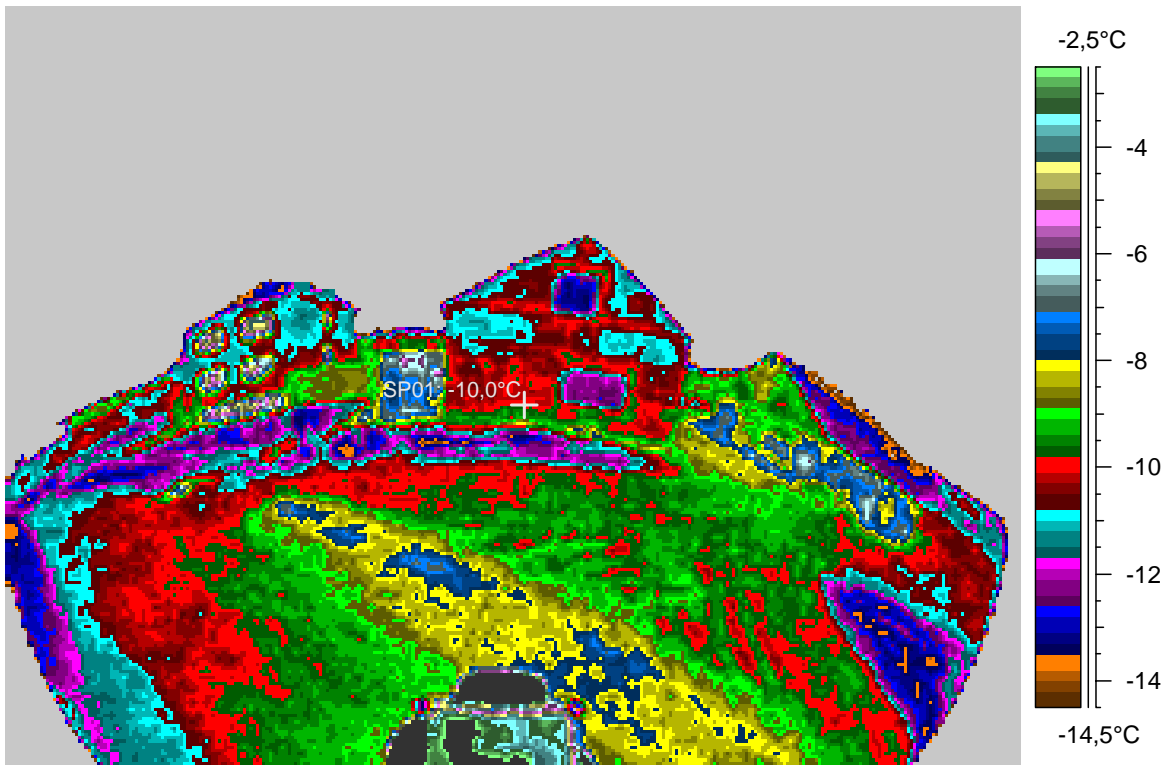
blabla

## 6 - Ir\_1282.jpg

Label	Value
IR : max	21,6°C
IR : min	<-30,0°C
SP01	-10,0°C

3.1.2008

22:15:32



comments:

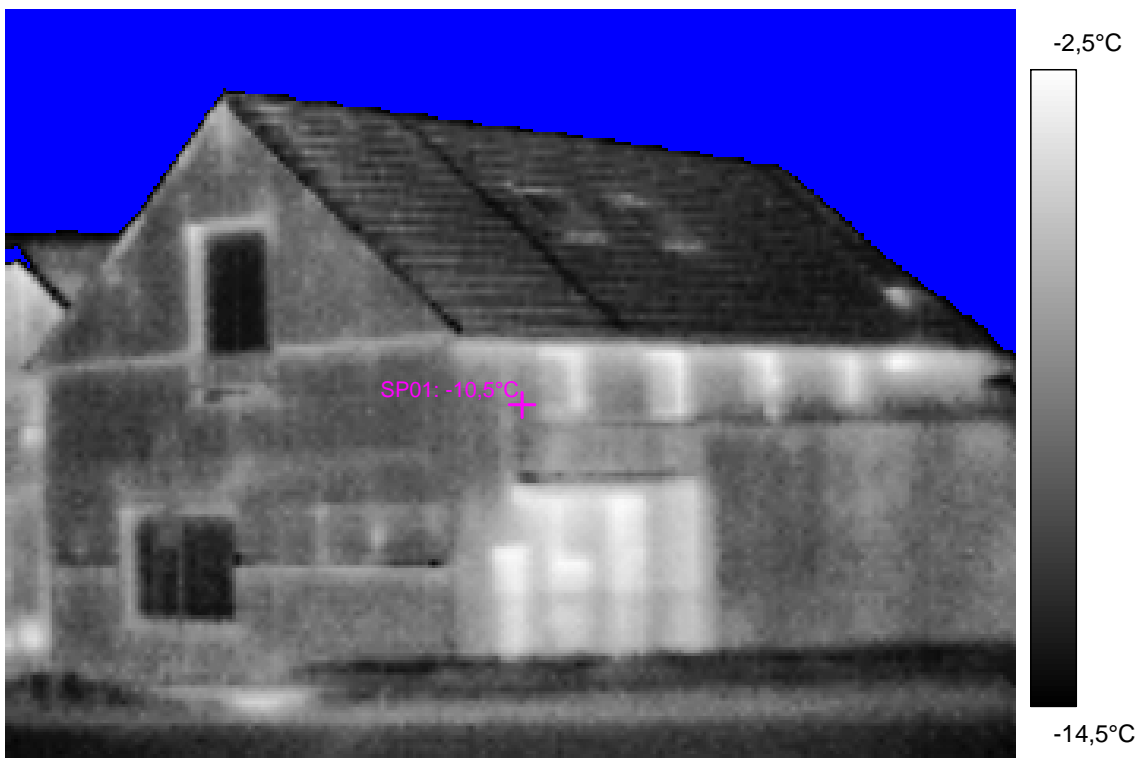
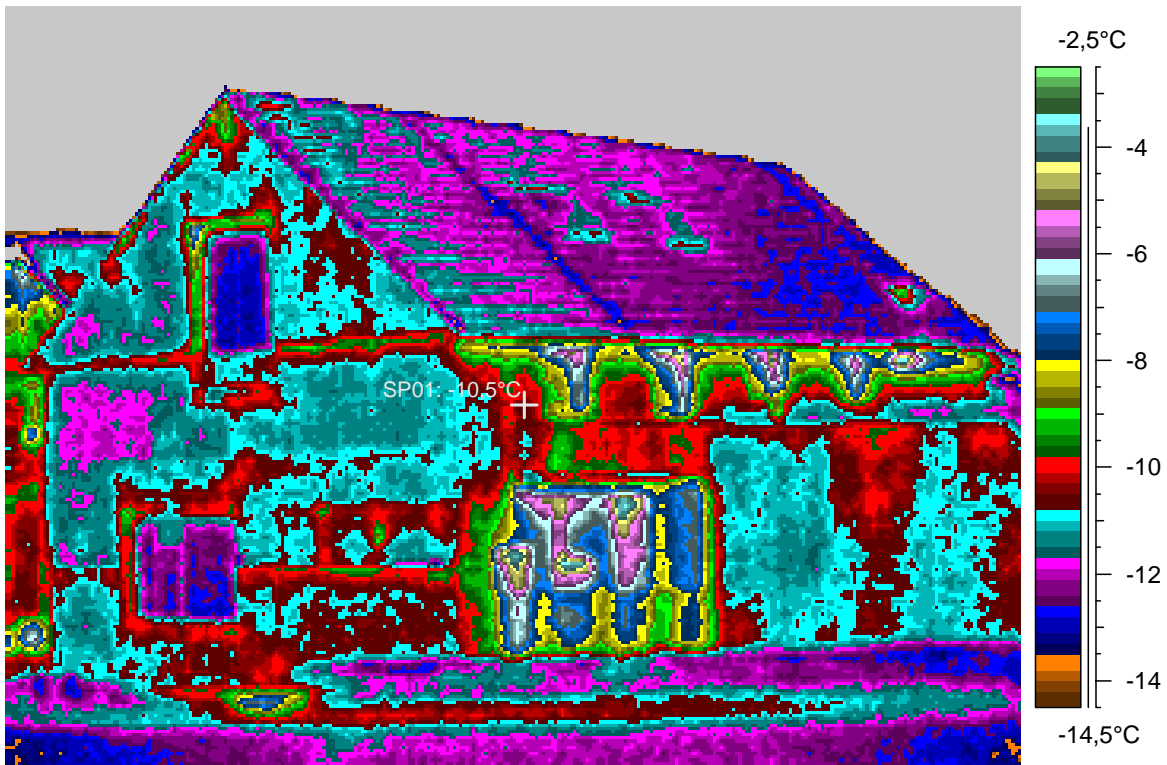
blabla

## 7 - Ir\_1283.jpg

Label	Value
IR : max	-3,3°C
IR : min	<-30,0°C
SP01	-10,5°C

3.1.2008

22:16:23



comments:

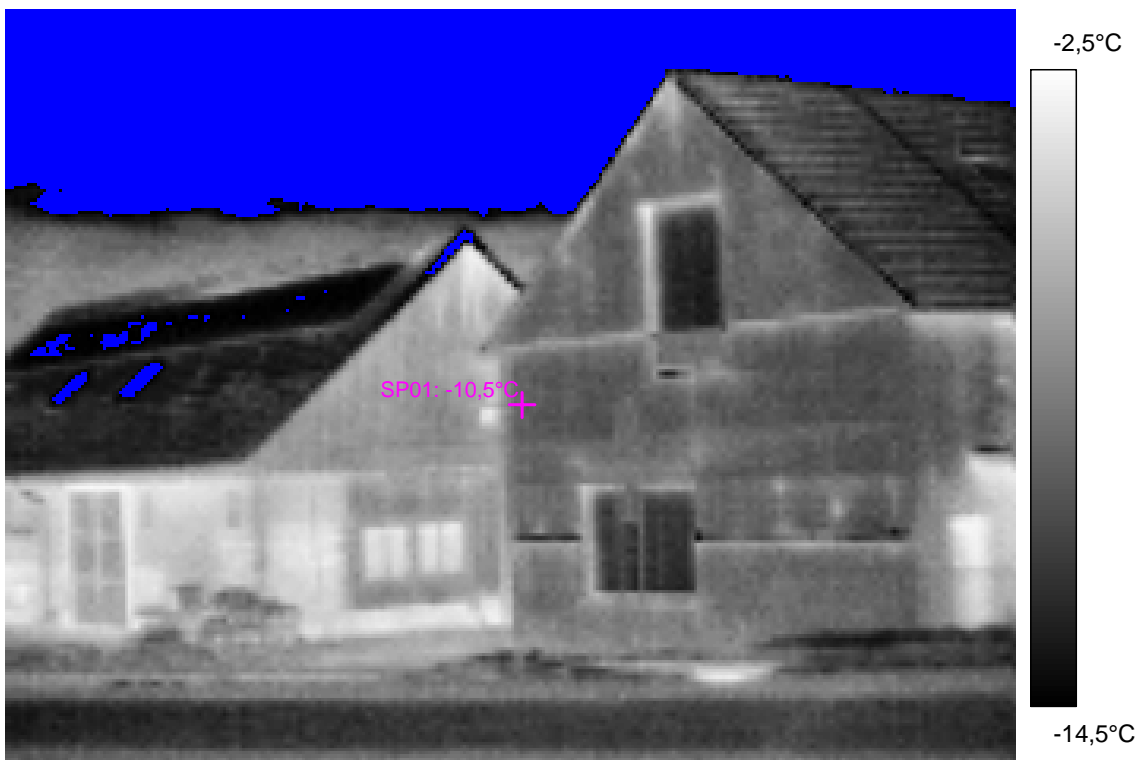
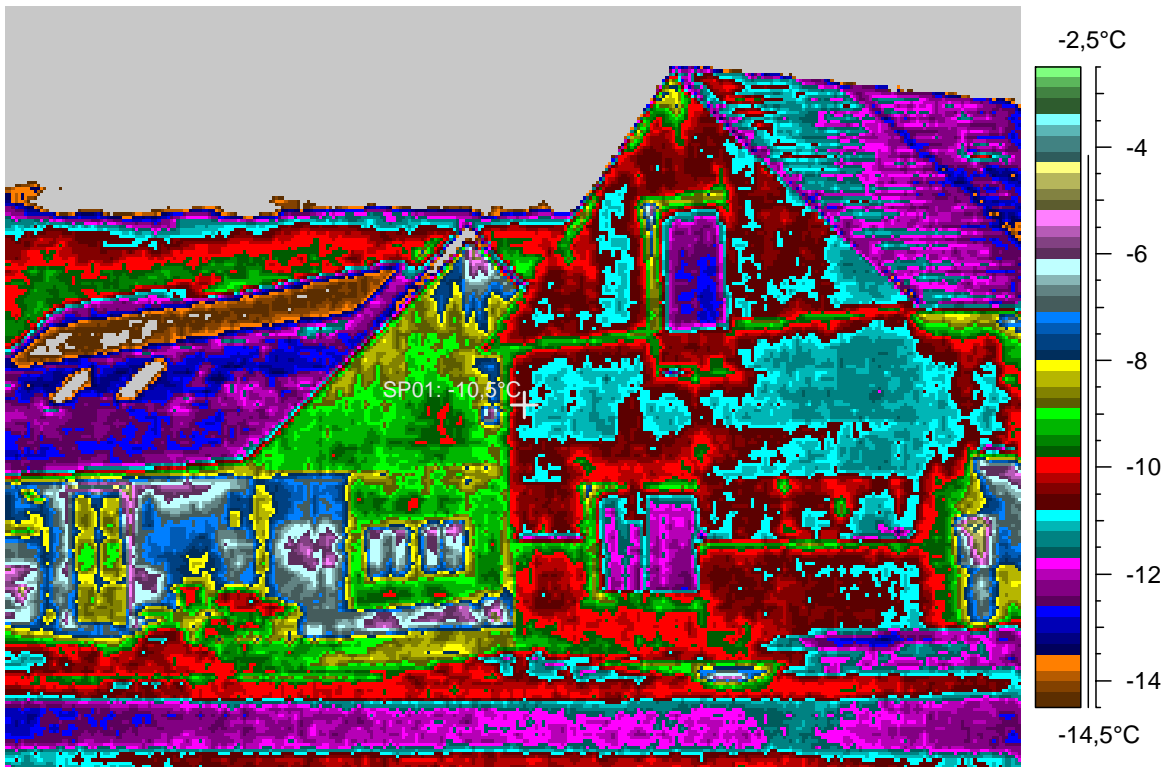
blabla

## 8 - Ir\_1284.jpg

Label	Value
IR : max	-4,0°C
IR : min	<-30,0°C
SP01	-10,5°C

3.1.2008

22:16:43





comments:

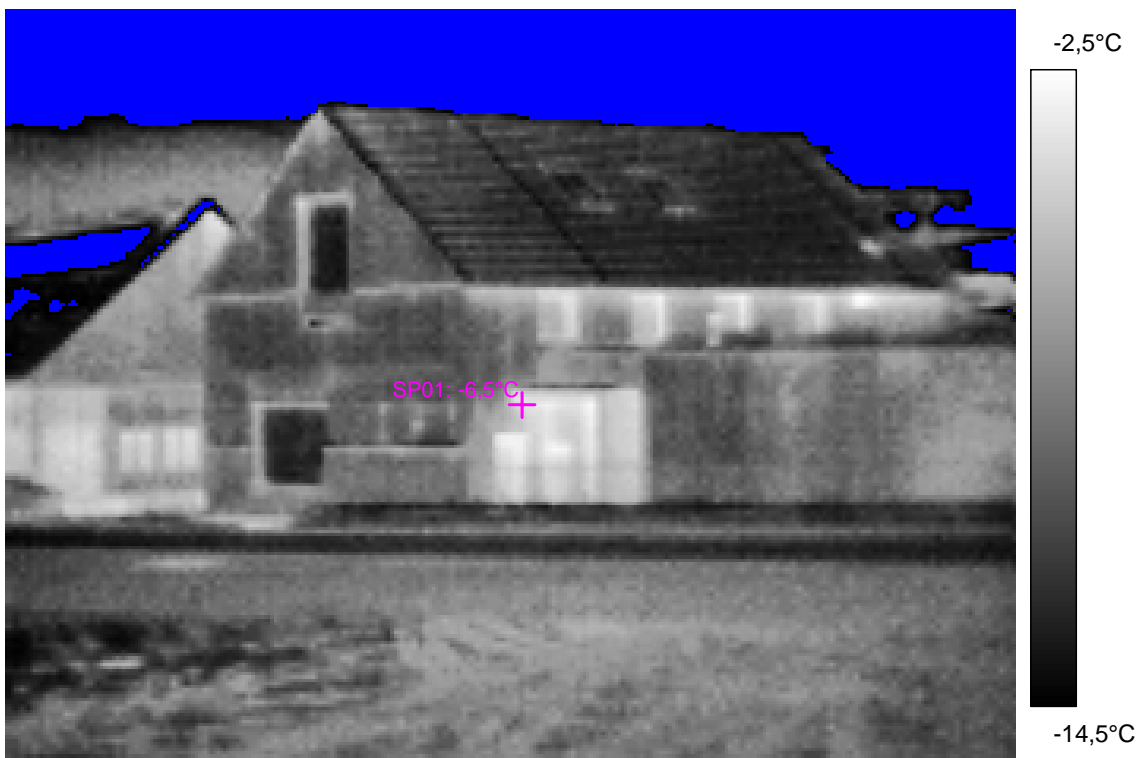
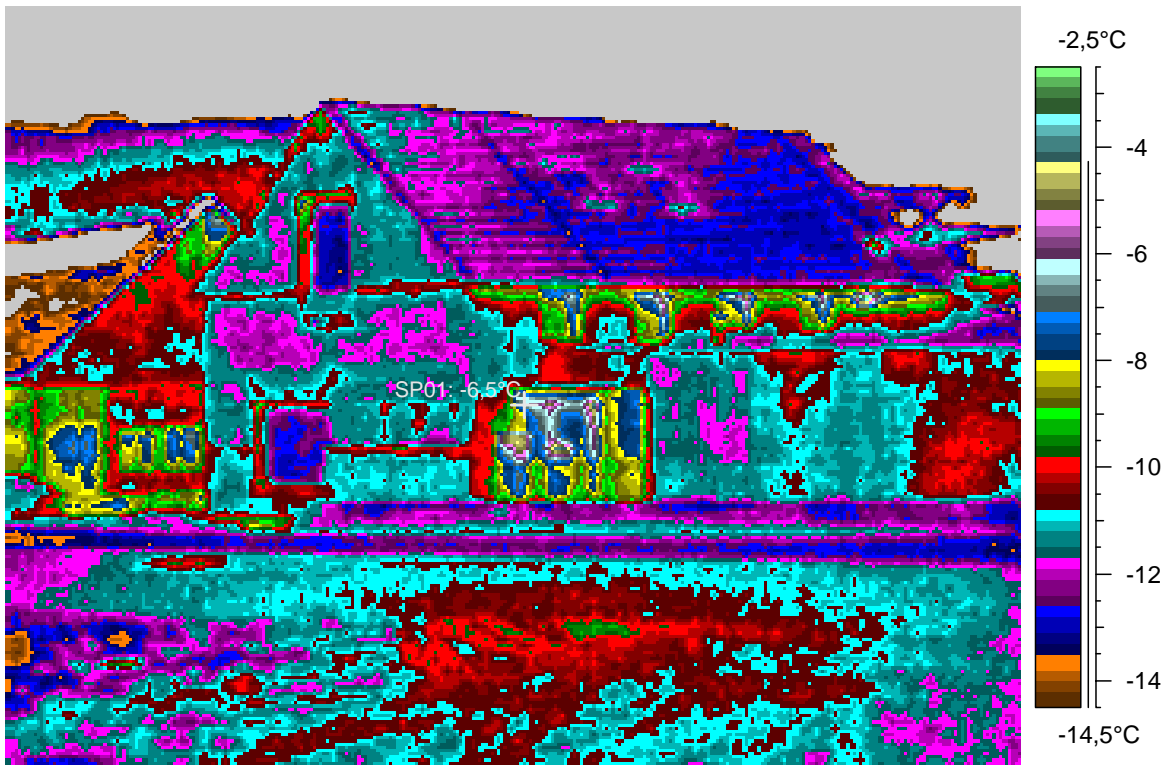
blabla

## 9 - Ir\_1285.jpg

Label	Value
IR : max	-2,5°C
IR : min	<-30,0°C
SP01	-6,5°C

3.1.2008

22:17:16



comments:

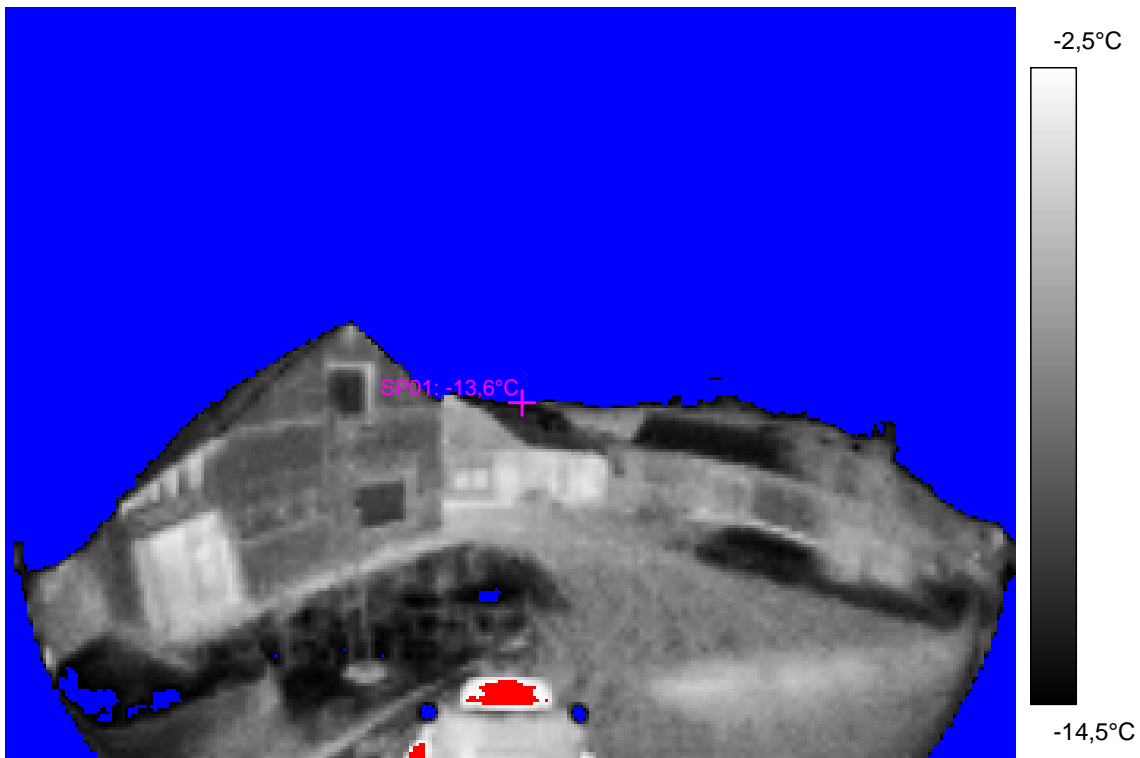
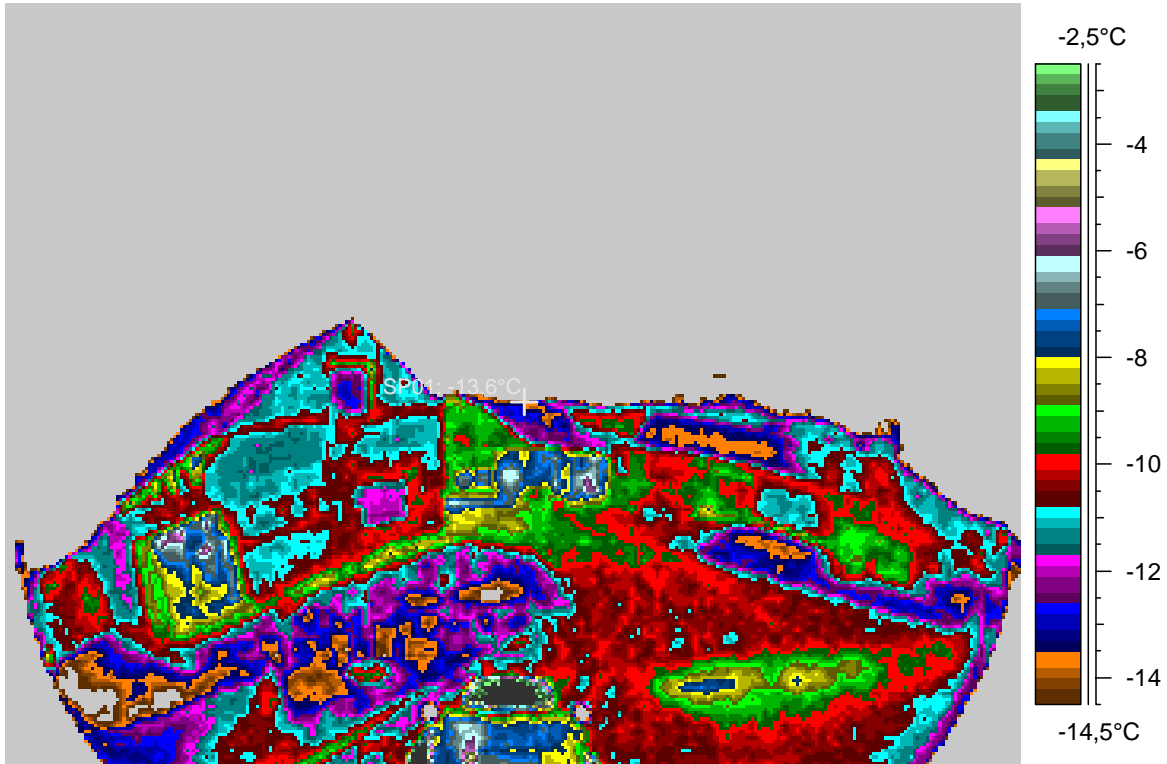
blabla

# 10 - Ir\_1286.jpg

Label	Value
IR : max	11,2°C
IR : min	<-30,0°C
SP01	-13,6°C

3.1.2008

22:18:17



comments:

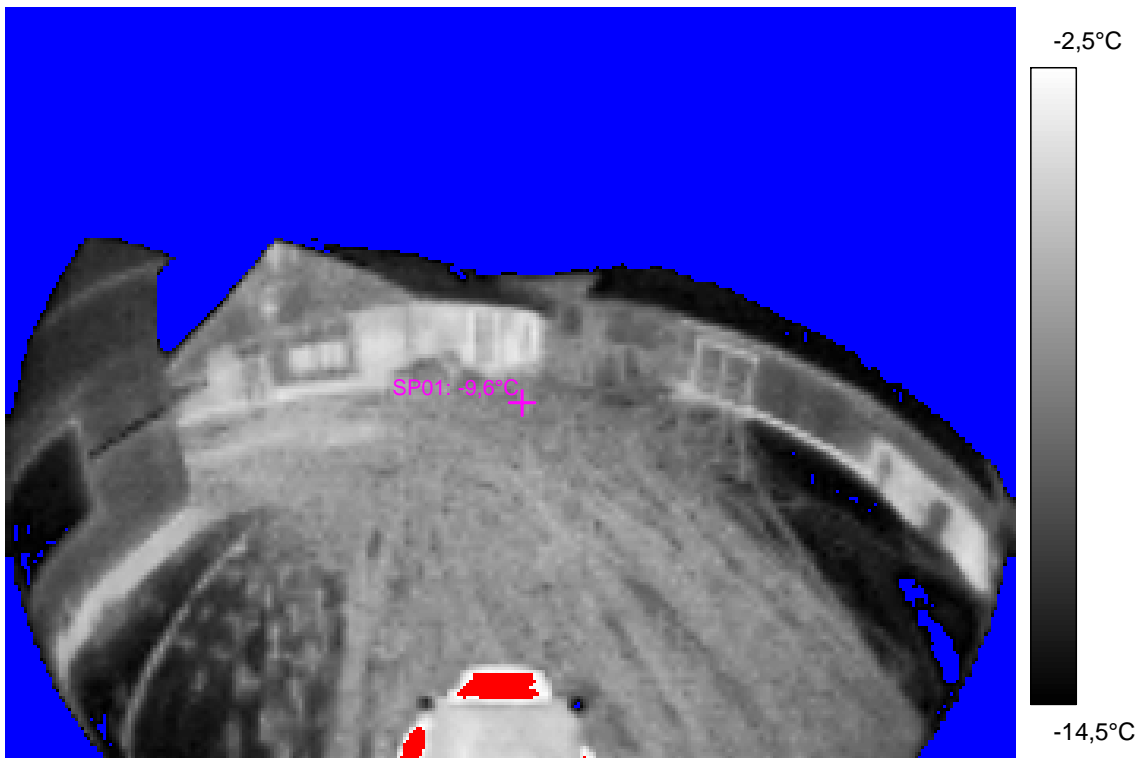
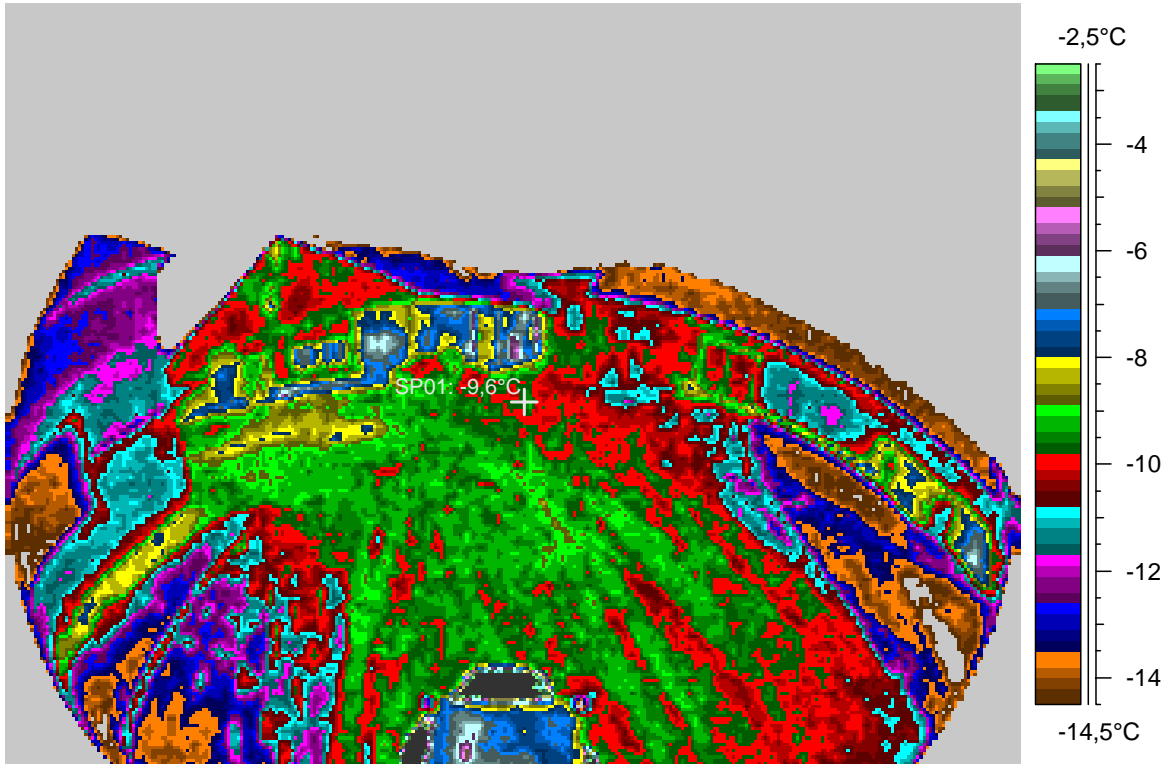
blabla

# 11 - Ir\_1287.jpg

Label	Value
IR : max	15,1°C
IR : min	<-30,0°C
SP01	-9,6°C

3.1.2008

22:18:44



comments:

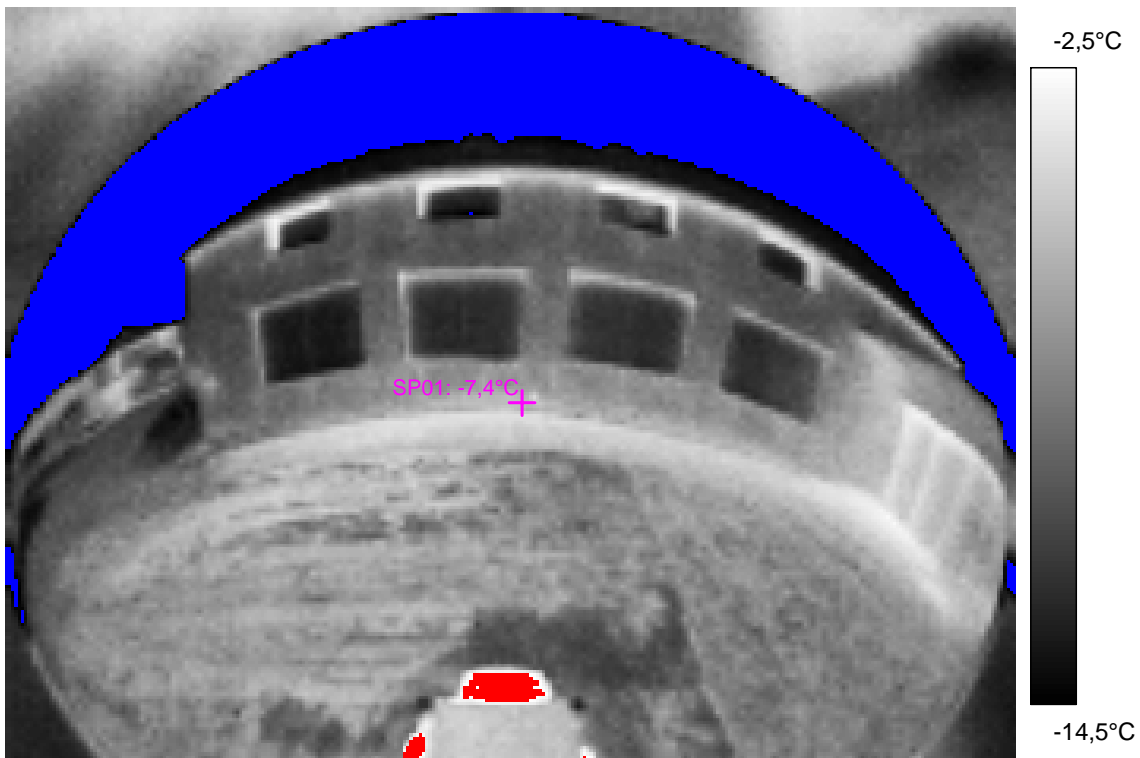
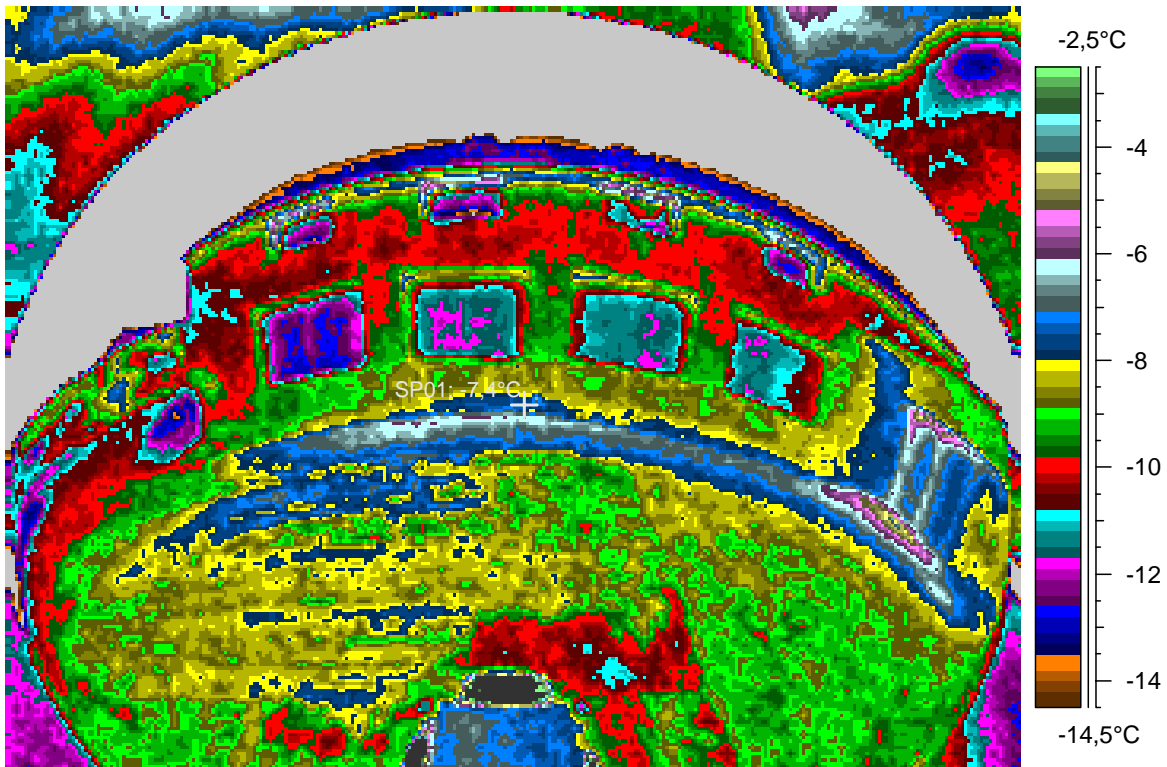
blabla

## 12 - Ir\_1288.jpg

Label	Value
IR : max	11,7°C
IR : min	<-30,0°C
SP01	-7,4°C

3.1.2008

22:19:14



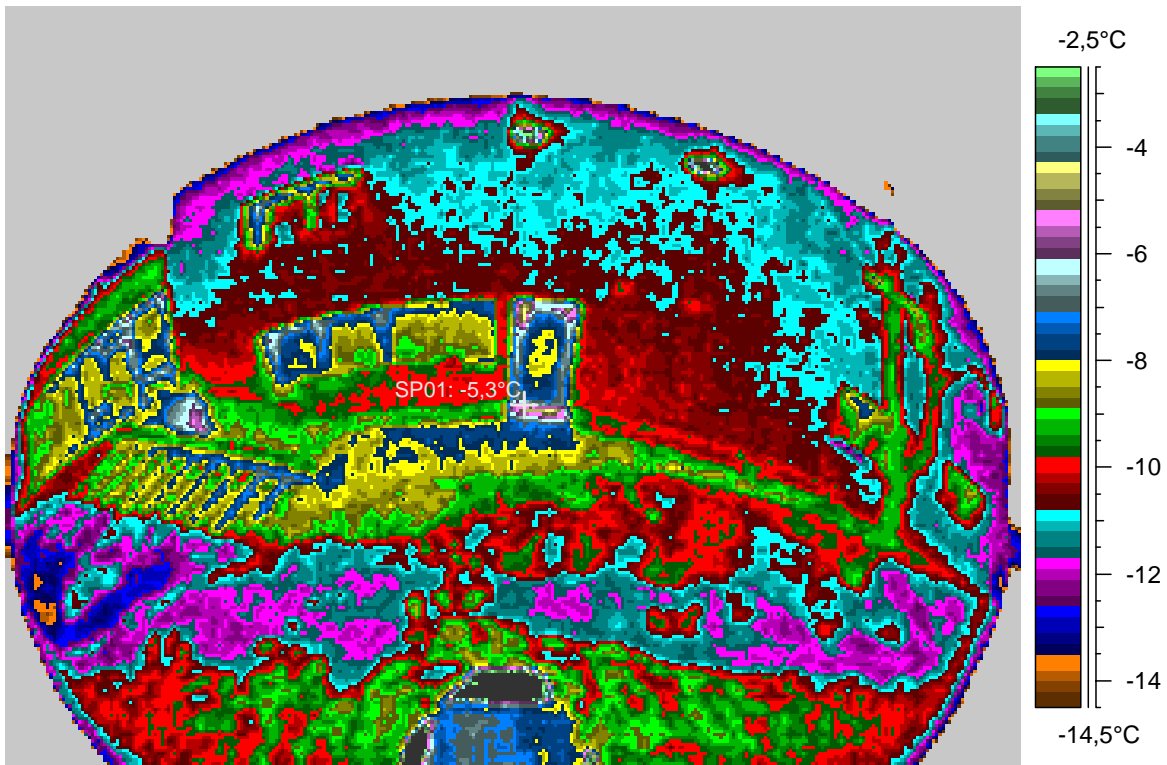
Hotspots are openings of the upper-floor ventilation system, switched-off. The bottom floor openings are not hot at all.

### 13 - Ir\_1289.jpg

Label	Value
IR : max	13,5°C
IR : min	<-30,0°C
SP01	-5,3°C

3.1.2008

22:20:00



comments:

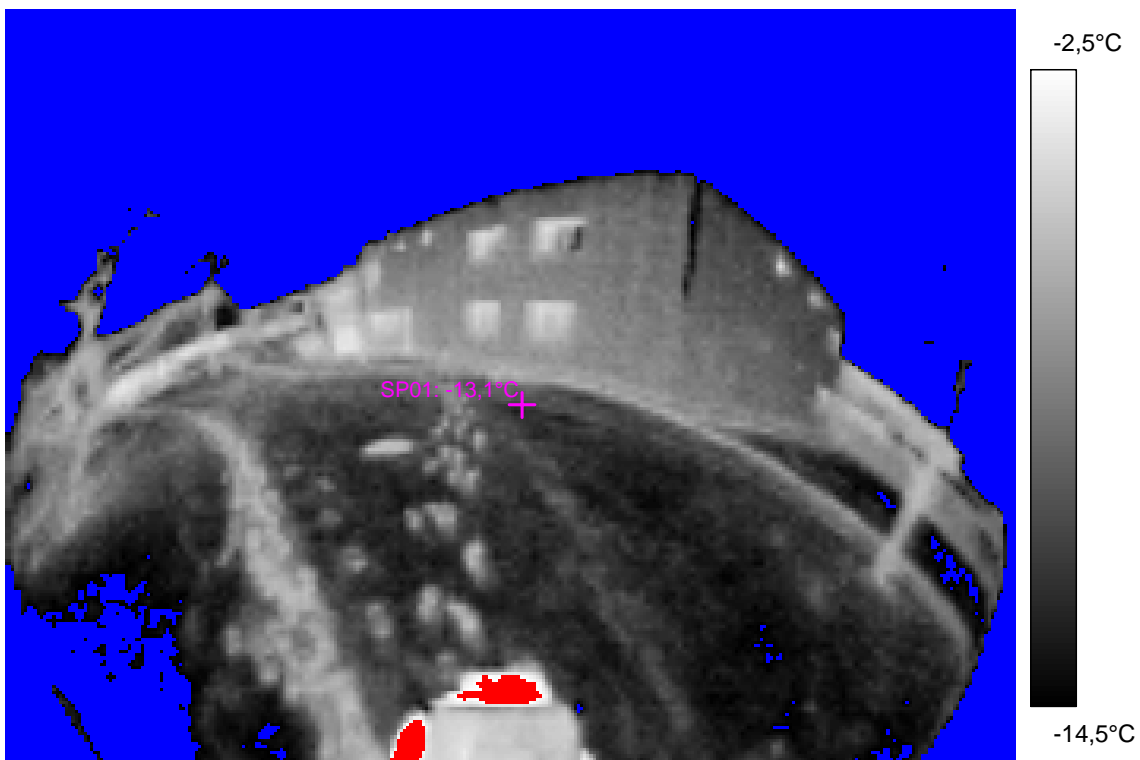
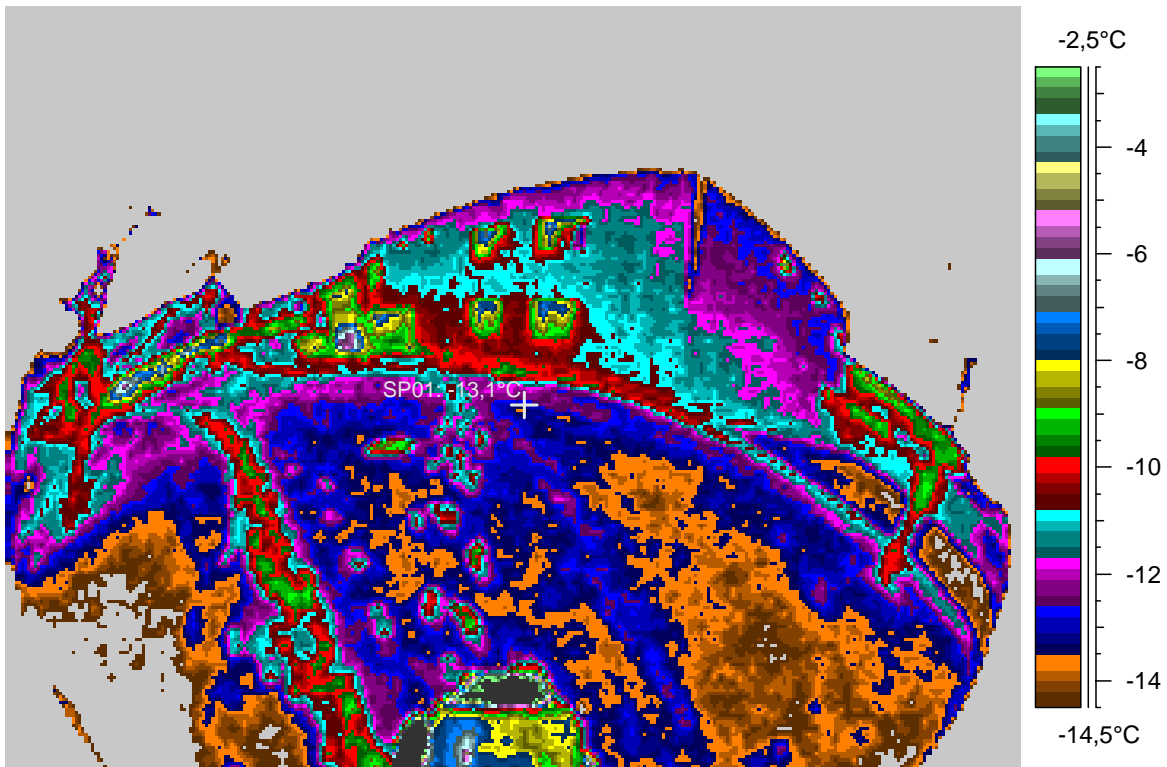
blabla

# 14 - Ir\_1290.jpg

Label	Value
IR : max	17,0°C
IR : min	<-30,0°C
SP01	-13,1°C

3.1.2008

22:20:42



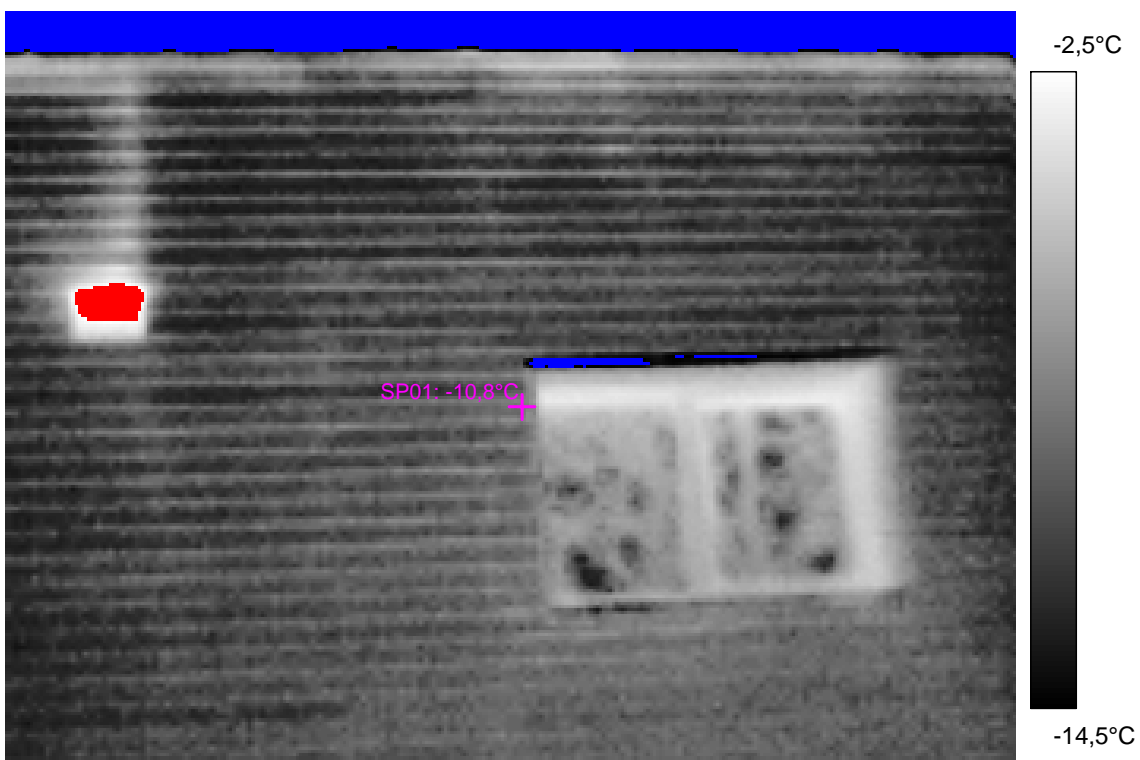
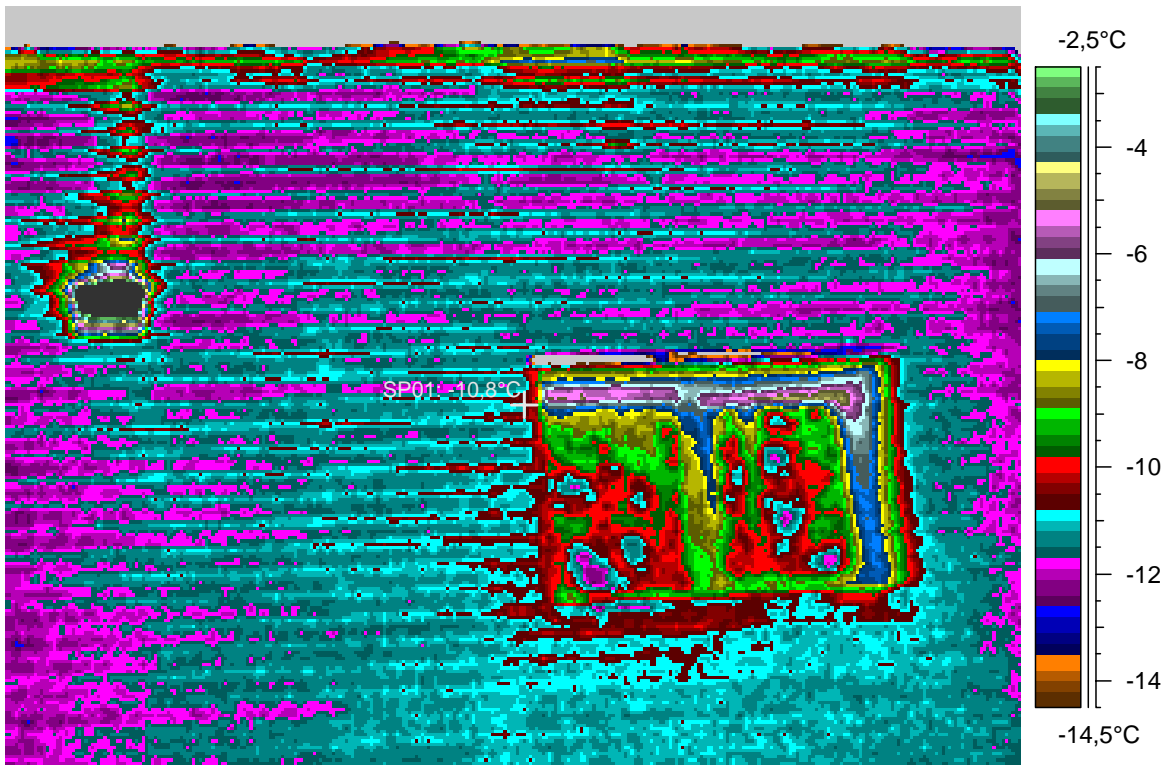
The 3 centigrade spot is a grating of the ventilation duct which is not running.

## 15 - Ir\_1291.jpg

Label	Value
IR : max	3,4°C
IR : min	<-30,0°C
SP01	-10,8°C

3.1.2008

22:21:43



comments:

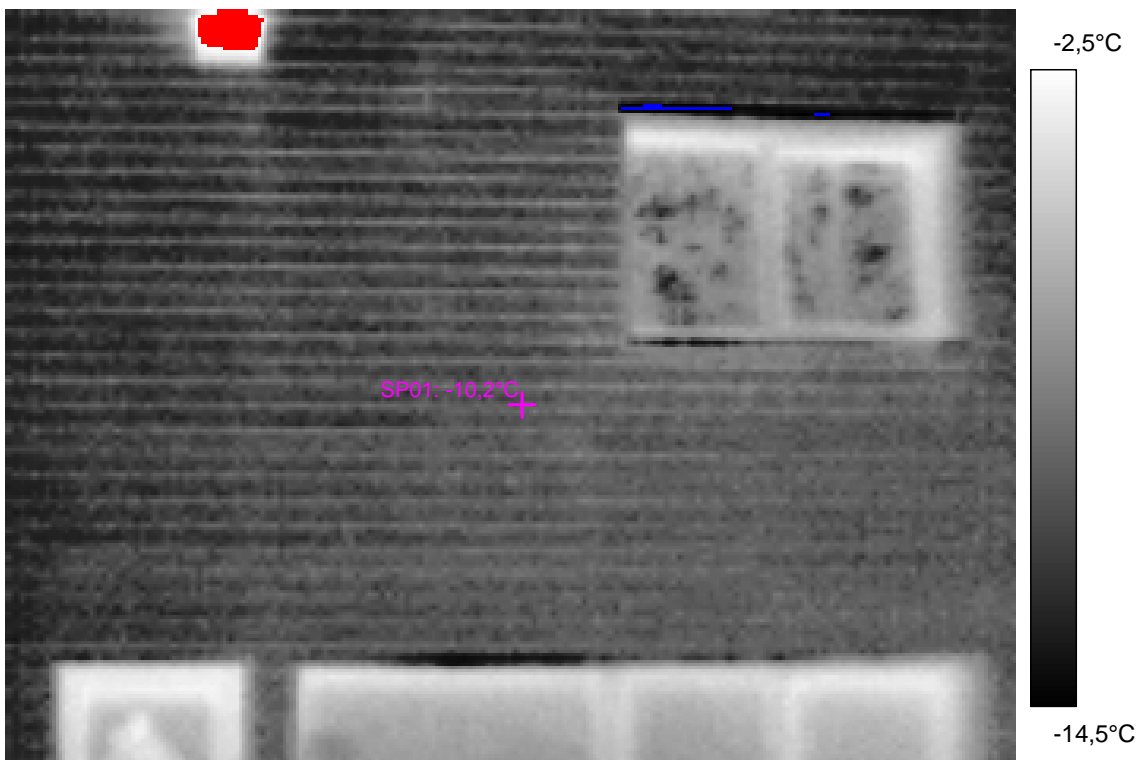
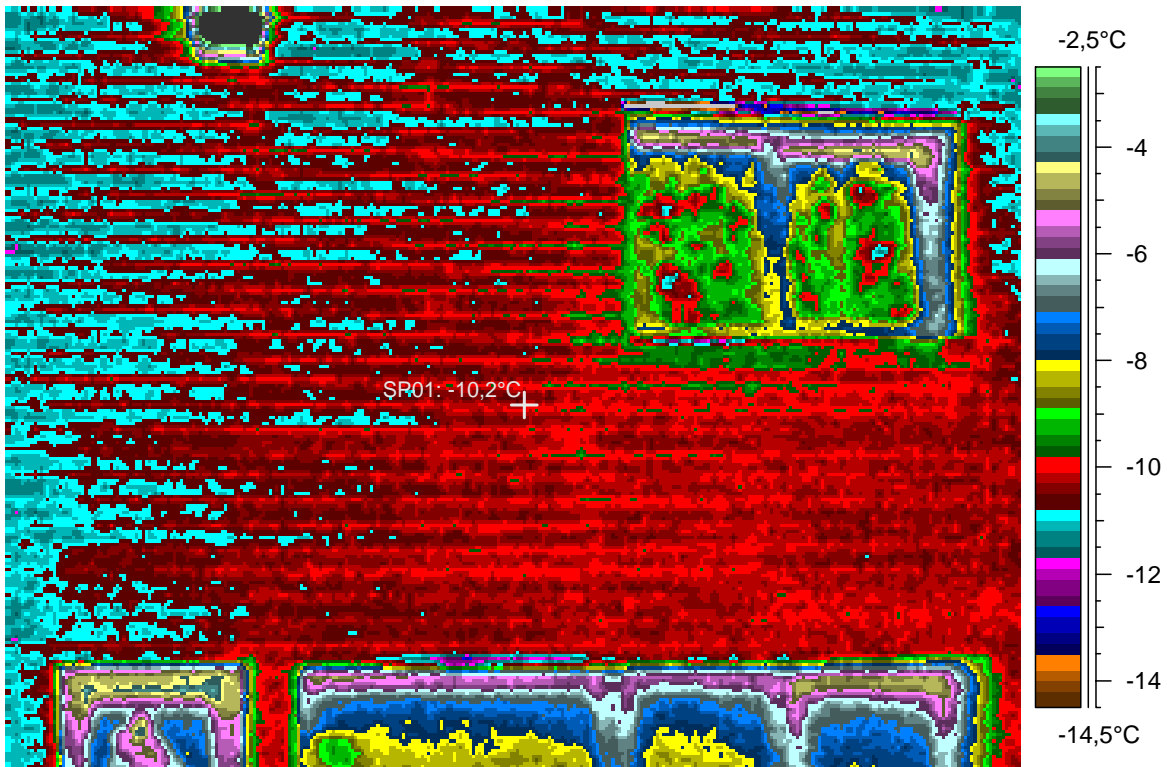
blabla

# 16 - Ir\_1292.jpg

Label	Value
IR : max	3,8°C
IR : min	-18,2°C
SP01	-10,2°C

3.1.2008

22:22:22





comments:

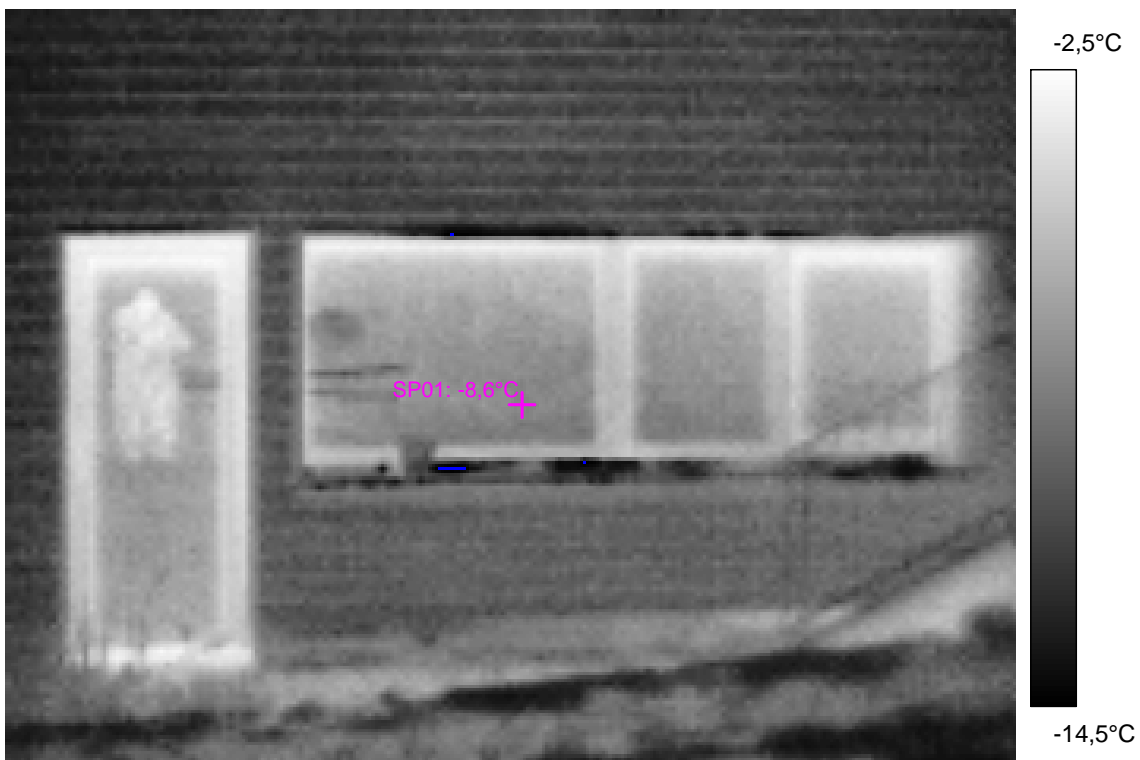
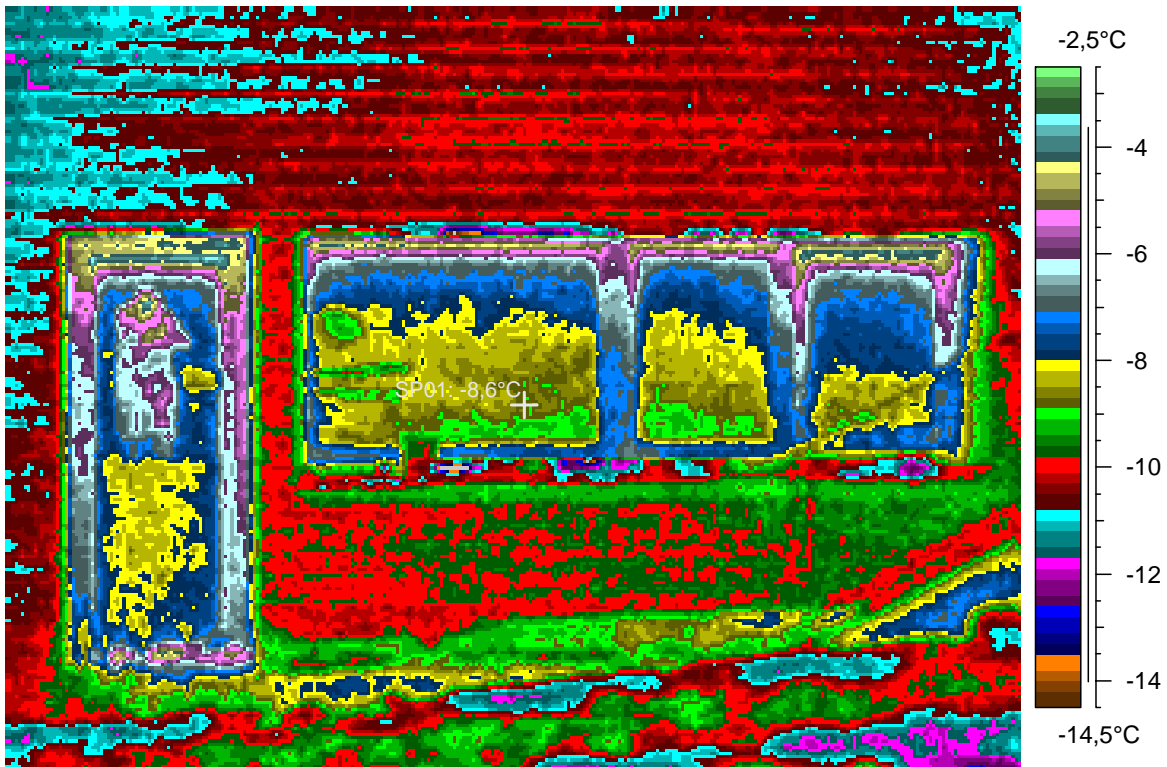
blabla

# 17 - Ir\_1293.jpg

Label	Value
IR : max	-3,3°C
IR : min	-16,6°C
SP01	-8,6°C

3.1.2008

22:23:17



comments:

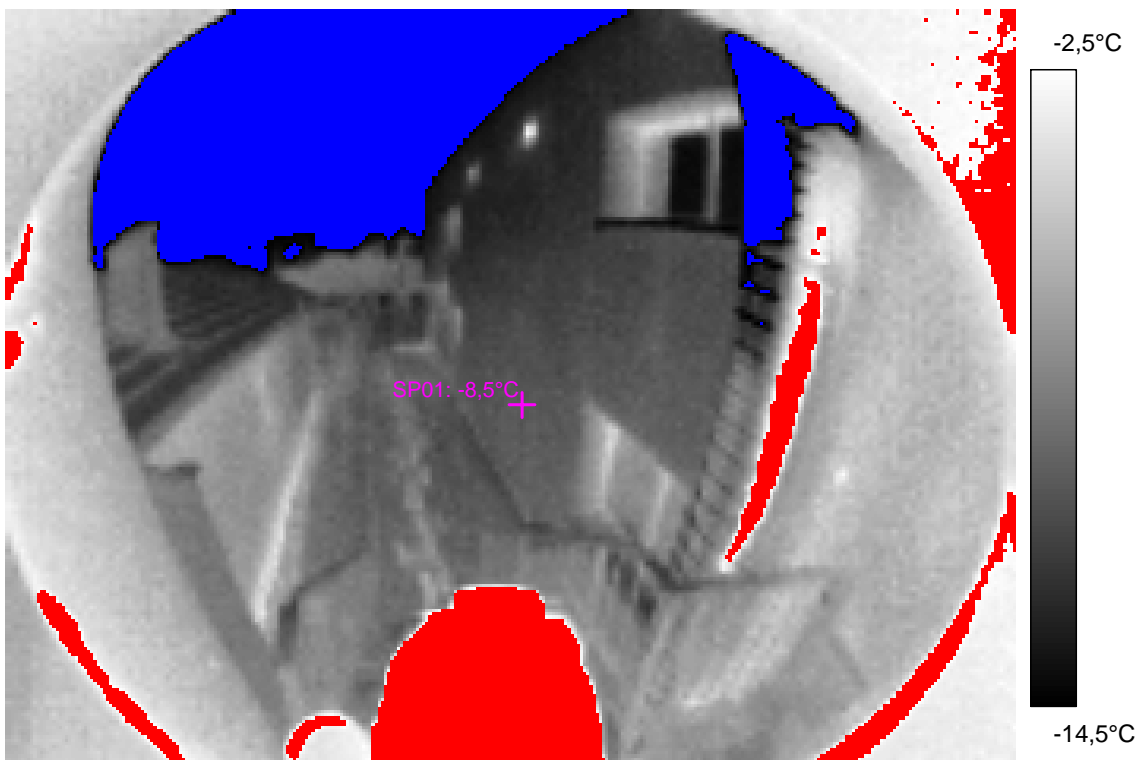
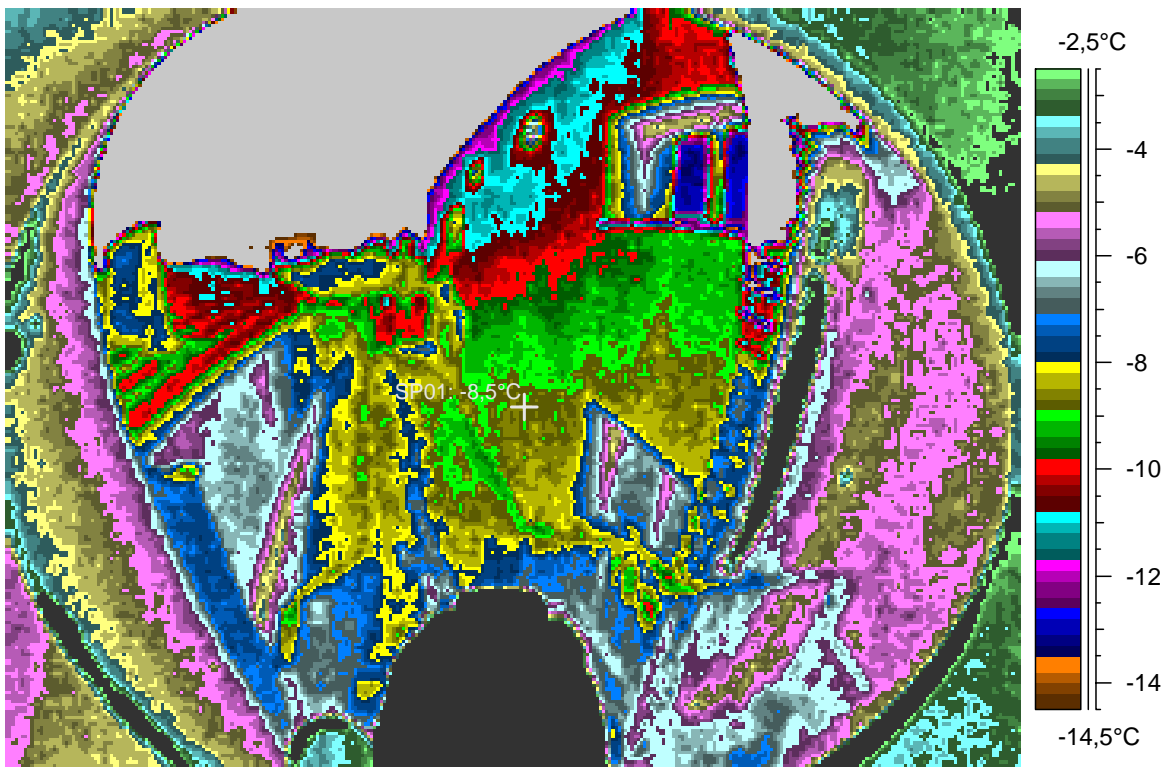
blabla

# 18 - Ir\_1316.jpg

Label	Value
IR : max	23,7°C
IR : min	<-30,0°C
SP01	-8,5°C

3.1.2008

23:00:44



comments:

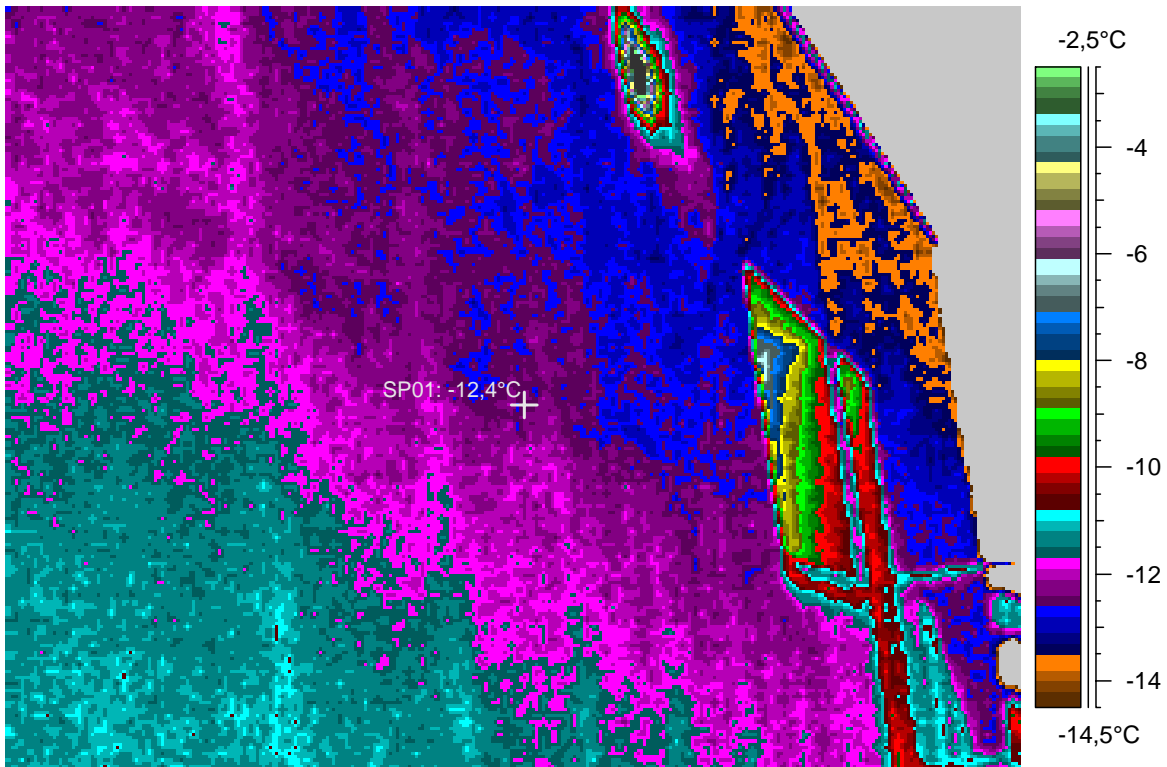
blabla

# 19 - Ir\_1317.jpg

Label	Value
IR : max	1,2°C
IR : min	<-30,0°C
SP01	-12,4°C

3.1.2008

23:01:51



comments:

blabla

## 20 - Ir\_1318.jpg

Label	Value
IR : max	-5,0°C
IR : min	*-27,1°C
SP01	-10,3°C

3.1.2008

23:02:05

