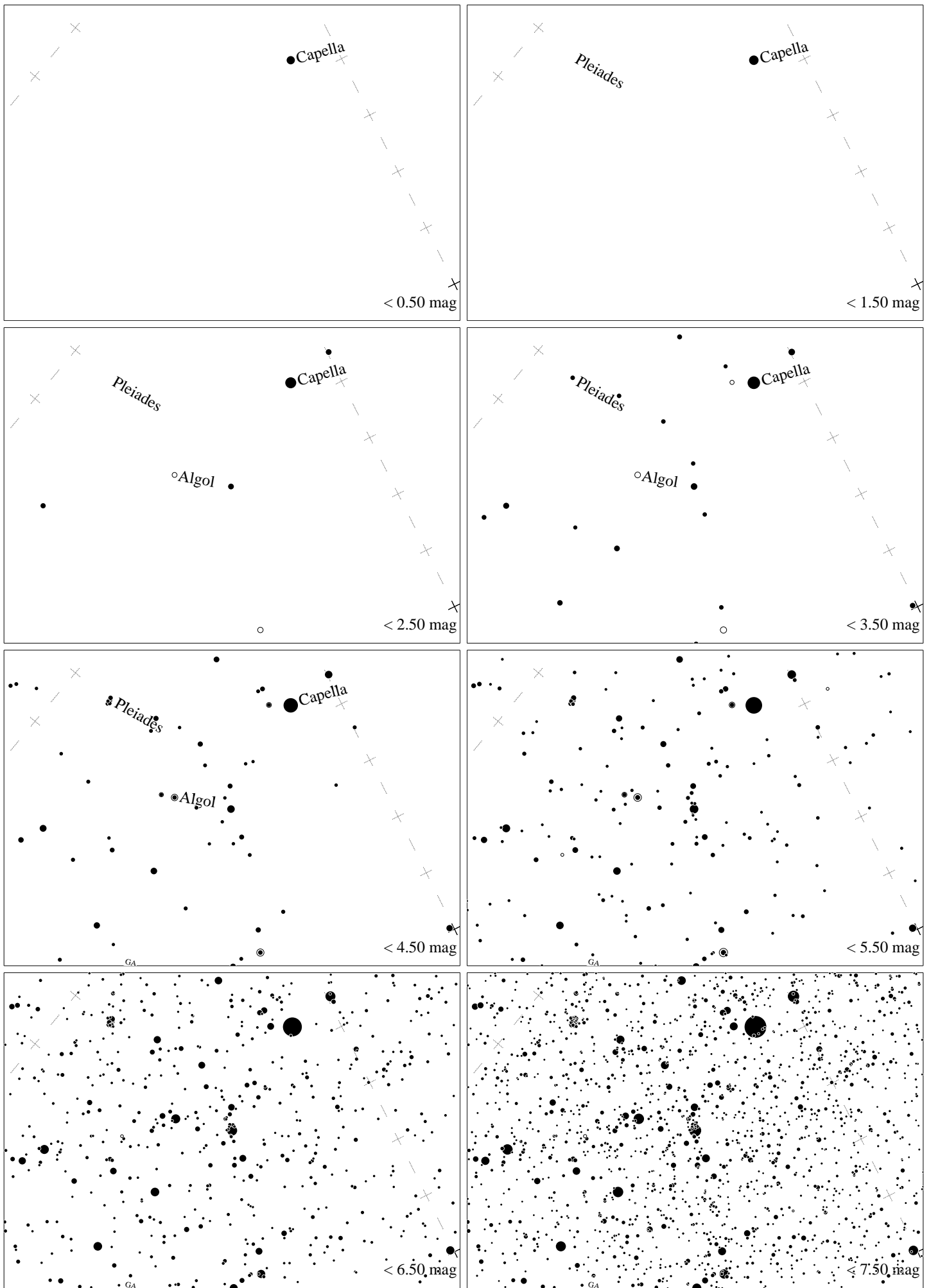
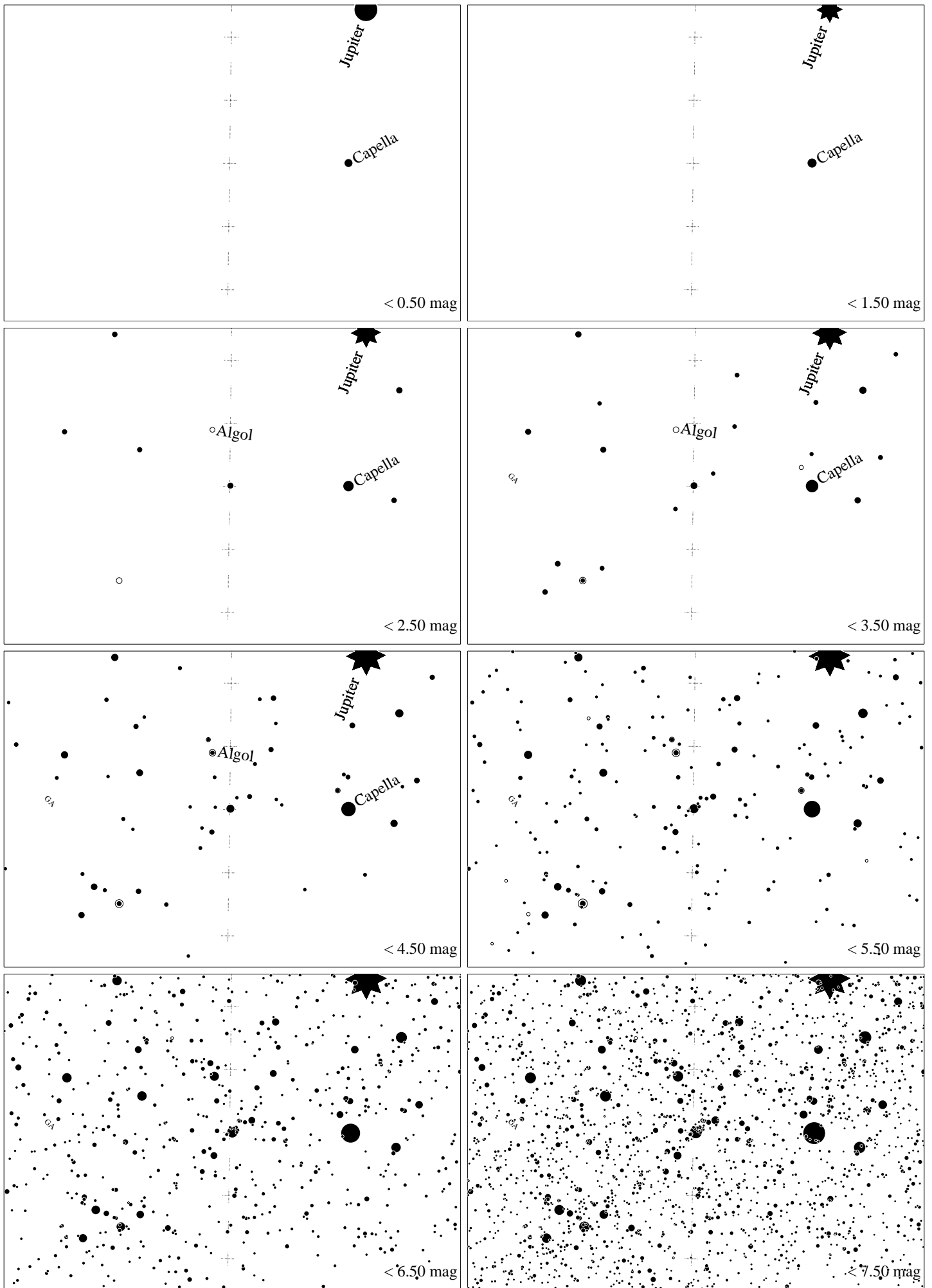


Maps for Globe at Night latitude 20° , 2024-01-06, 21 h local time (Sun at -47°), transparent air. Lines from N(E,S,W) to zenith shown (crosses each 10°). Centered at Mirfak (α Persei), 12° to the left from N, at 59° height. The brightest star is Capella. Map vertical size 50° . *Jan Hollan, CzechGlobe*



Maps for Globe at Night latitude 20° , 2020-02-04, 21 h local time (Sun at -44°), transparent air. Lines from N(E,S,W) to zenith shown (crosses each 10°). Centered at Mirfak (α Persei), 36° to the left from N, at 48° height. The brightest star is Capella. Map vertical size 50° . *Jan Hollan, CzechGlobe*



Maps for Globe at Night latitude 20° , 2024-12-26, 21 h local time (Sun at -48°), transparent air. Lines from N(E,S,W) to zenith shown (crosses each 10°). Centered at Mirfak (α Persei), 1° to the right from N, at 60° height. The brightest star is Capella. Map vertical size 50° . *Jan Hollan, CzechGlobe*