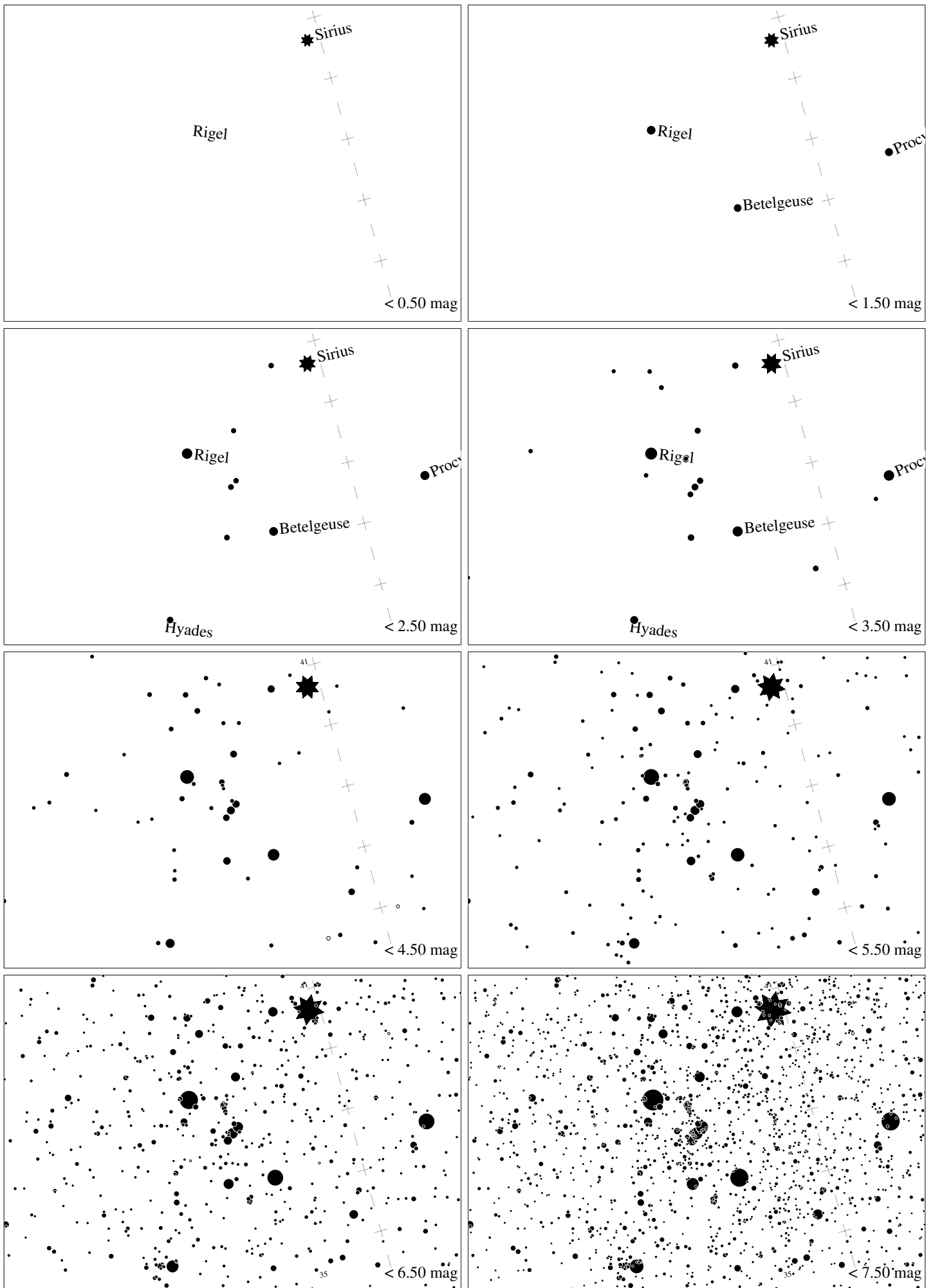
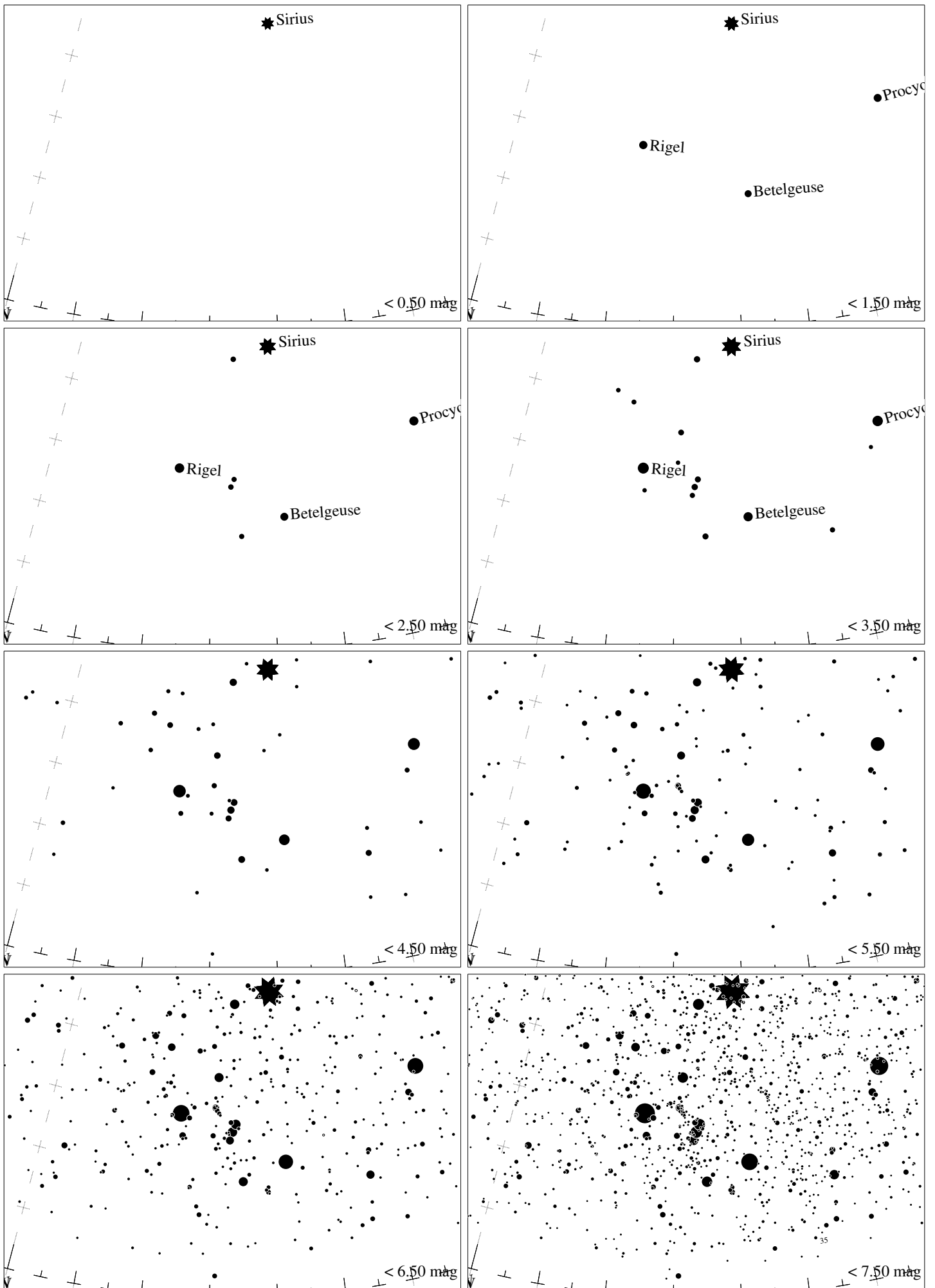


Maps for Globe at Night at latitude  $-50^\circ$ , 2020-01-20, 21 h local time (Sun at  $-8^\circ$ ), transparent air. Lines from N(E,S,W) to zenith shown (crosses each  $10^\circ$ ). Orion's belt is  $13^\circ$  to the right from N, at  $41^\circ$  height. Star clusters M 41 and M35 marked when appropriate. Map vertical size is  $50^\circ$ . *Jan Hollan maps, CzechGlobe*



Maps for Globe at Night at latitude  $-50^\circ$ , 2020-02-18, 21 h local time (Sun at  $-15^\circ$ ), transparent air. Lines from N(E,S,W) to zenith shown (crosses each  $10^\circ$ ). Orion's belt is  $25^\circ$  to the left from N, at  $39^\circ$  height. Star clusters M 41 and M 35 marked when appropriate. Map vertical size is  $50^\circ$ . *Jan Hollan maps, CzechGlobe*



Maps for Globe at Night at latitude  $-50^\circ$ , 2020-03-19, 21 h local time (Sun at  $-26^\circ$ ), transparent air. Lines from N(E,S,W) to zenith shown (crosses each  $10^\circ$ ). Orion's belt is  $57^\circ$  to the left from N, at  $26^\circ$  height. Star clusters M 41 and M35 marked when appropriate. Map vertical size is  $50^\circ$ . *Jan Hollan maps, CzechGlobe*