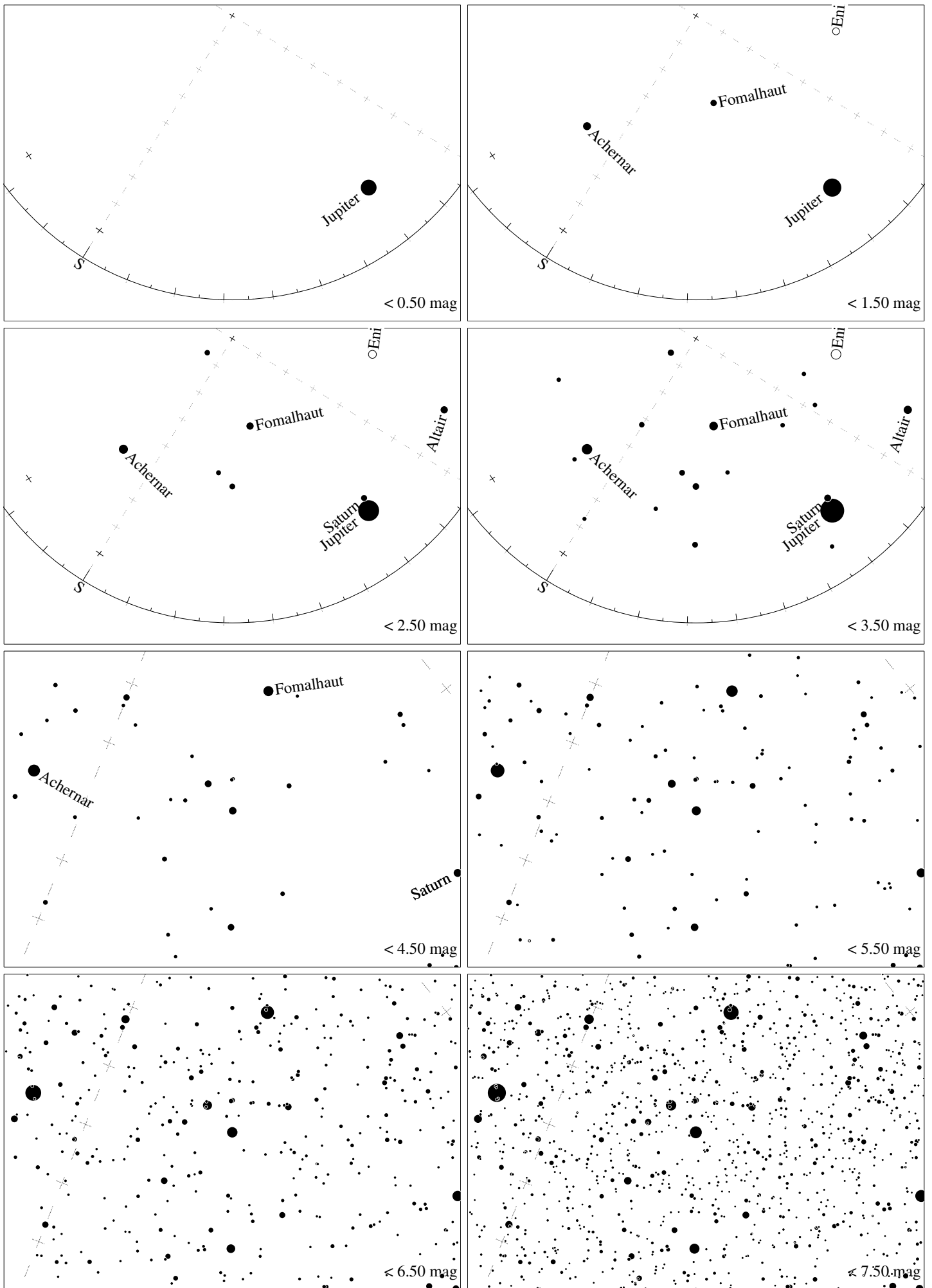
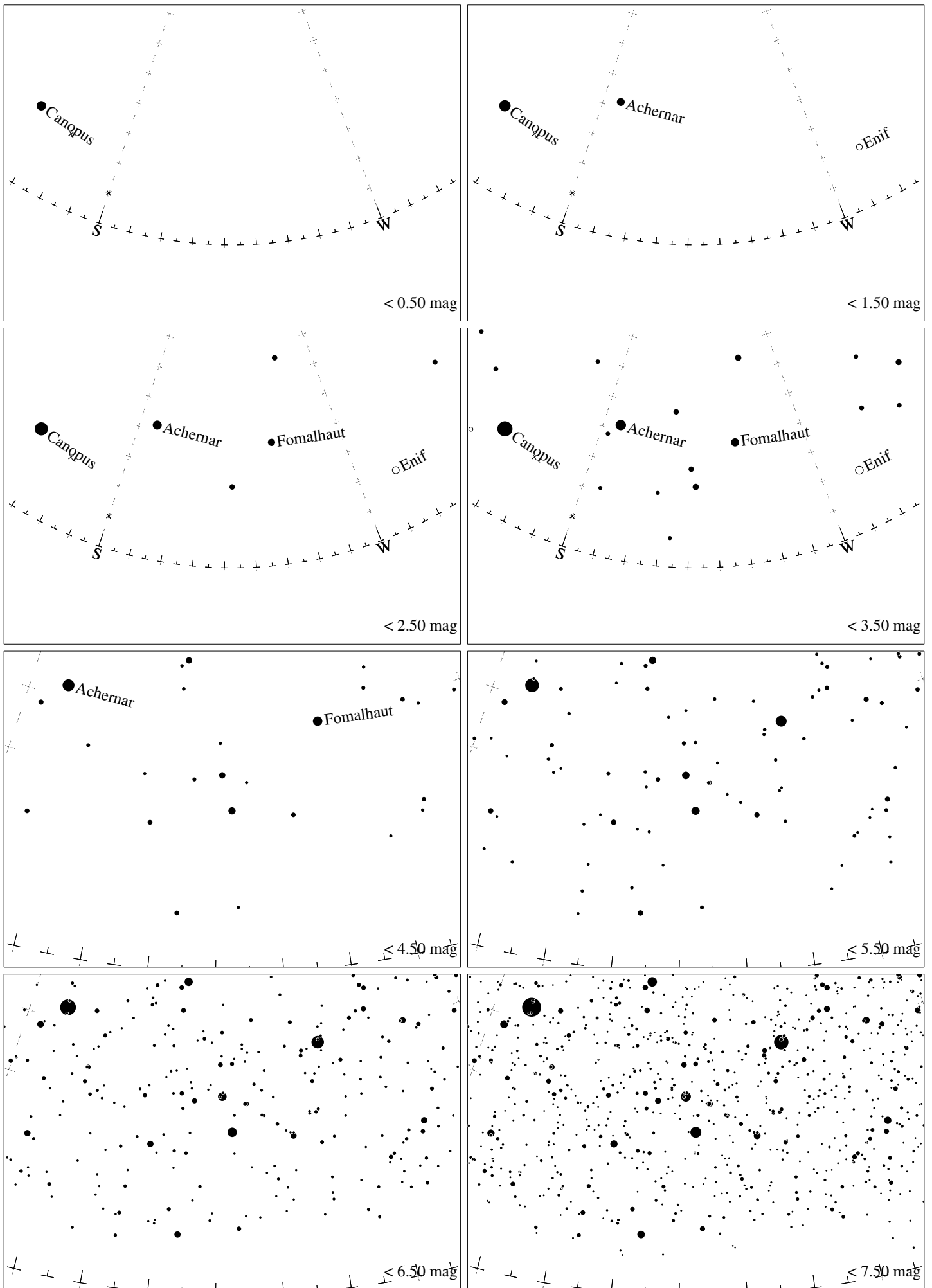


Maps for Globe at Night latitude -10° , 2020-10-12, 21:30 h local time (Sun at -45°), transparent air. Lines from N(E,S,W) to zenith shown (crosses each 10°). Centered on Alnair (α Grus), which is 5° to the right from S, at 53° height. Detailed maps 50° vertically, the first four maps 100° . *Jan Hollan, CzechGlobe*



Maps for Globe at Night latitude -10° , 2020-11-11, 21:30 h local time (Sun at -41°), transparent air. Lines from N(E,S,W) to zenith shown (crosses each 10°). Centered on Alnair (α Gruis), which is 32° to the right from S, at 43° height. Detailed maps 50° vertically, the first four maps 100° . *Jan Hollan, CzechGlobe*



Maps for Globe at Night latitude -10° , 2020-12-10, 21:30 h local time (Sun at -36°), transparent air. Lines from N(E,S,W) to zenith shown (crosses each 10°). Centered on Alnair (α Gruis), which is 42° to the right from S, at 26° height. Detailed maps 50° vertically, the first four maps 100° . Jan Hollan, CzechGlobe