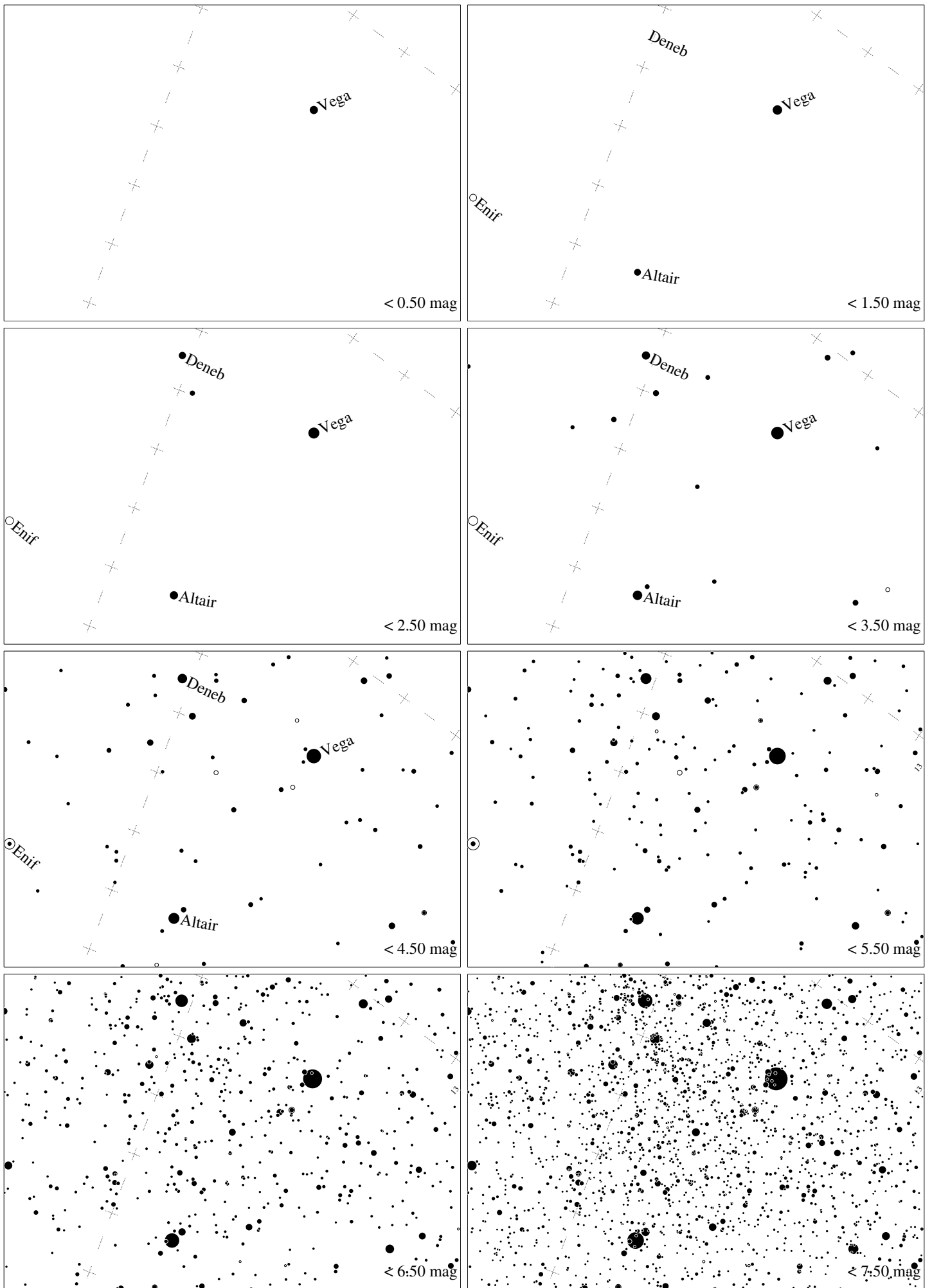
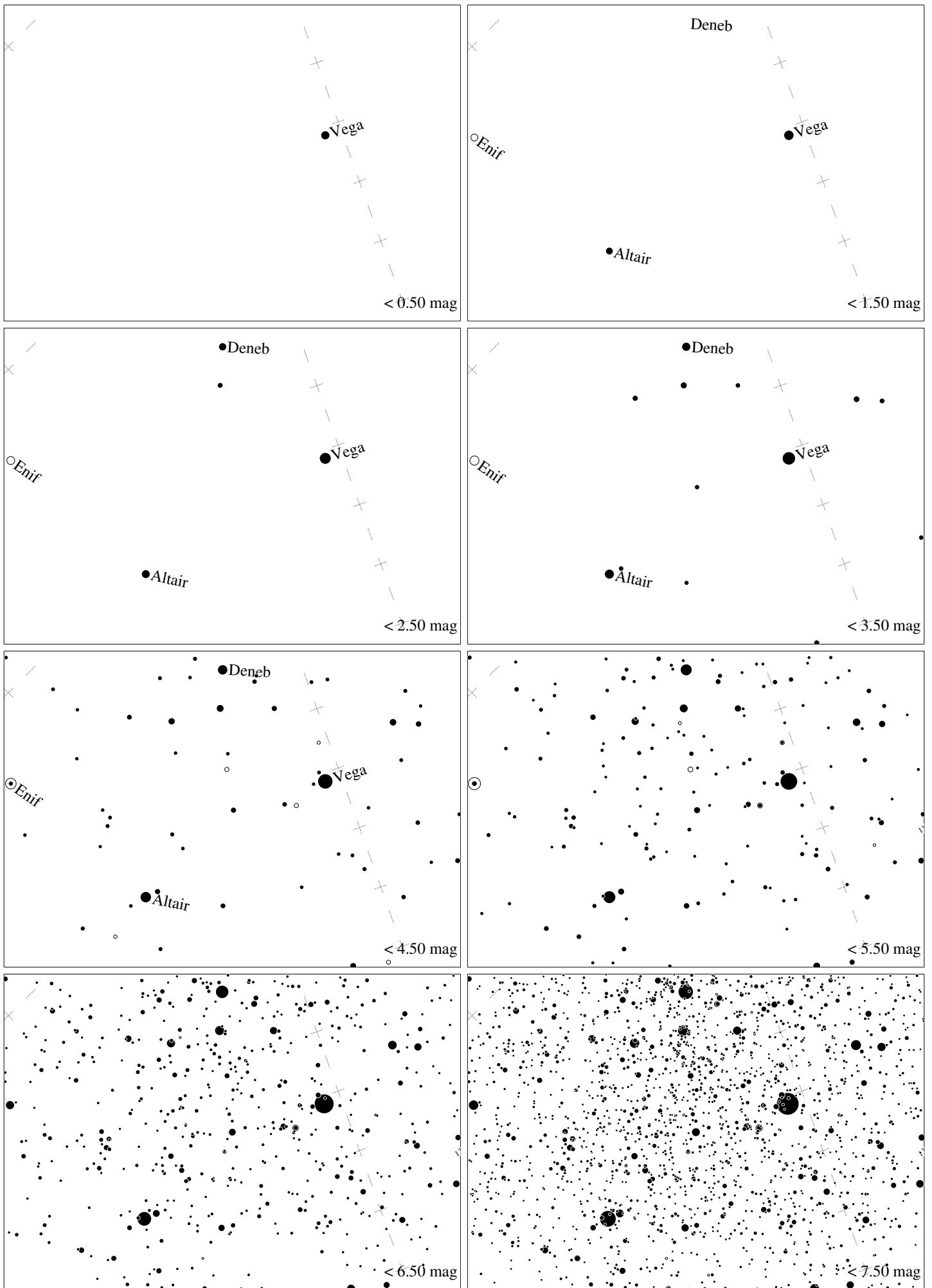


Maps for Globe at Night latitude  $60^\circ$ , 2020-08-14, 21 h local time (Sun at  $-7^\circ$ ), transparent air. Lines from N(E,S,W) to zenith shown (crosses each  $10^\circ$ ). Centered on Albireo ( $\beta$  Cygni),  $23^\circ$  to the left from S, at  $57^\circ$  height, near the centre of Summer Triangle. Map vertical size is  $50^\circ$ . *Jan Hollan, CzechGlobe*



Maps for Globe at Night latitude  $60^\circ$ , 2020-09-13, 21 h local time (Sun at  $-18^\circ$ ), transparent air. Lines from N(E,S,W) to zenith shown (crosses each  $10^\circ$ ). Centered on Albireo ( $\beta$  Cygni),  $25^\circ$  to the right from S, at  $56^\circ$  height, near the centre of Summer Triangle. Map vertical size is  $50^\circ$ . *Jan Hollan, CzechGlobe*



Maps for Globe at Night latitude  $60^\circ$ , 2020-10-12, 21 h local time (Sun at  $-29^\circ$ ), transparent air. Lines from N(E,S,W) to zenith shown (crosses each  $10^\circ$ ). Centered on Albireo ( $\beta$  Cygni),  $63^\circ$  to the right from S, at  $46^\circ$  height, near the centre of Summer Triangle. Map vertical size is  $50^\circ$ . *Jan Hollan, CzechGlobe*