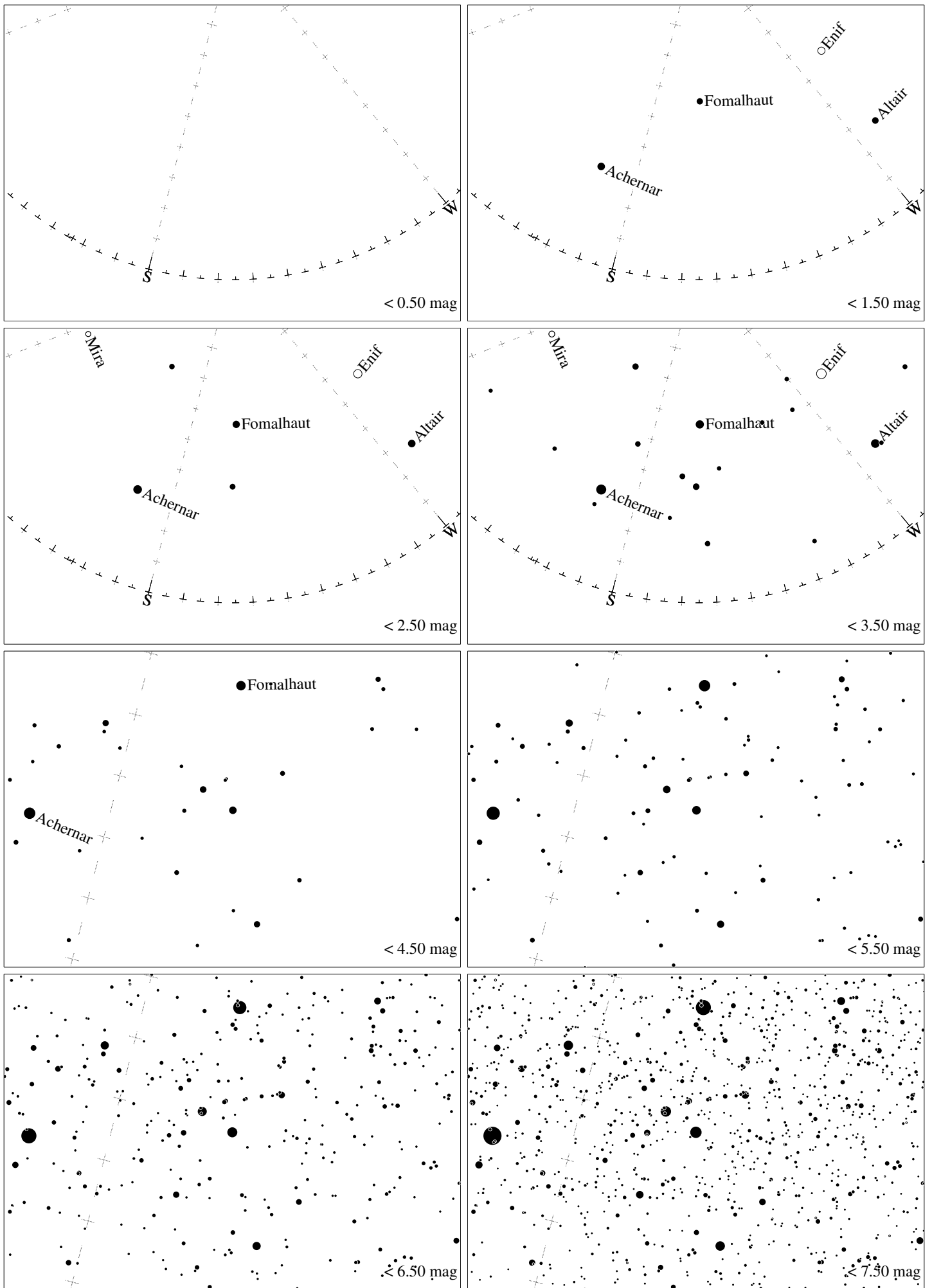
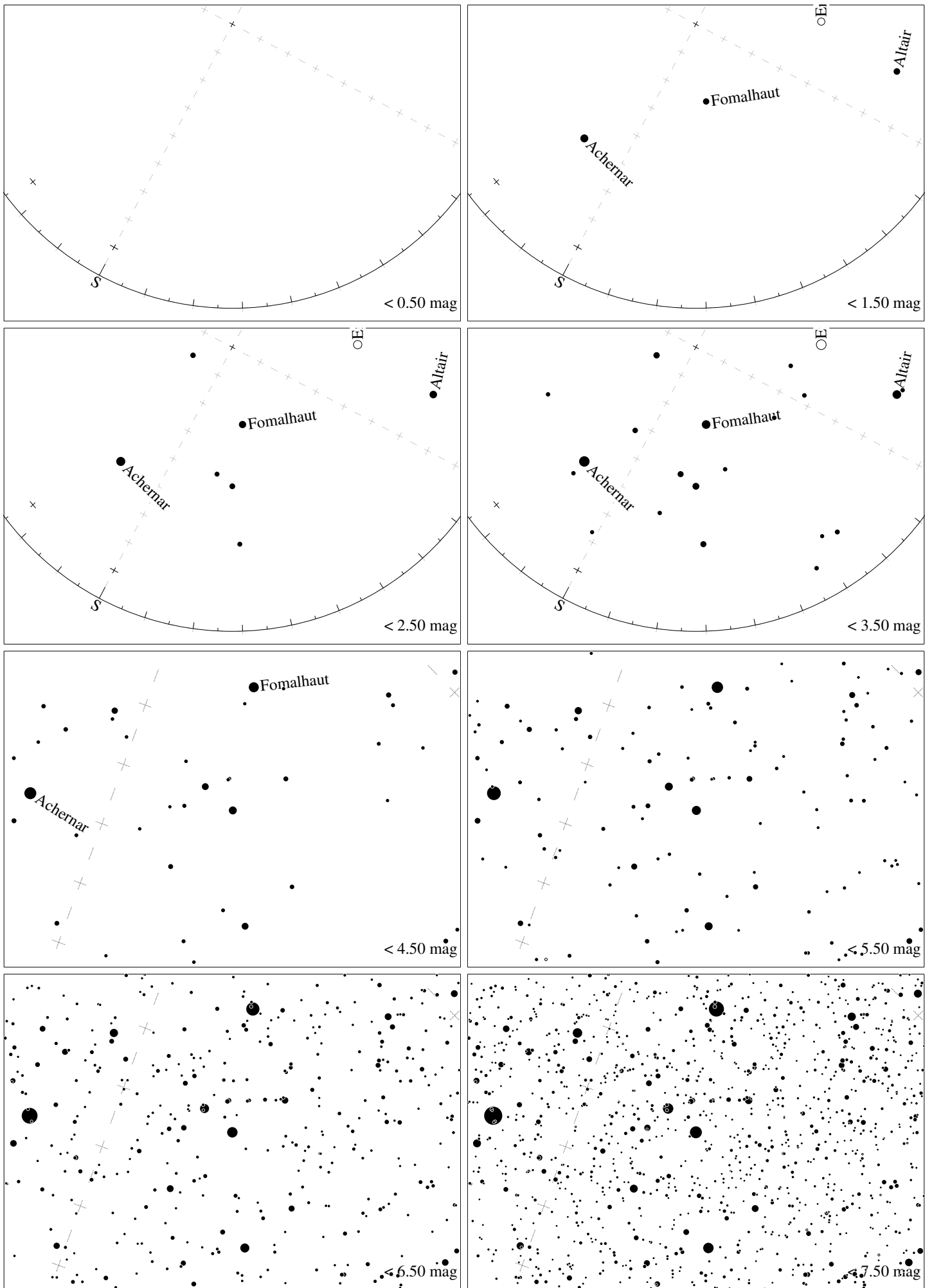


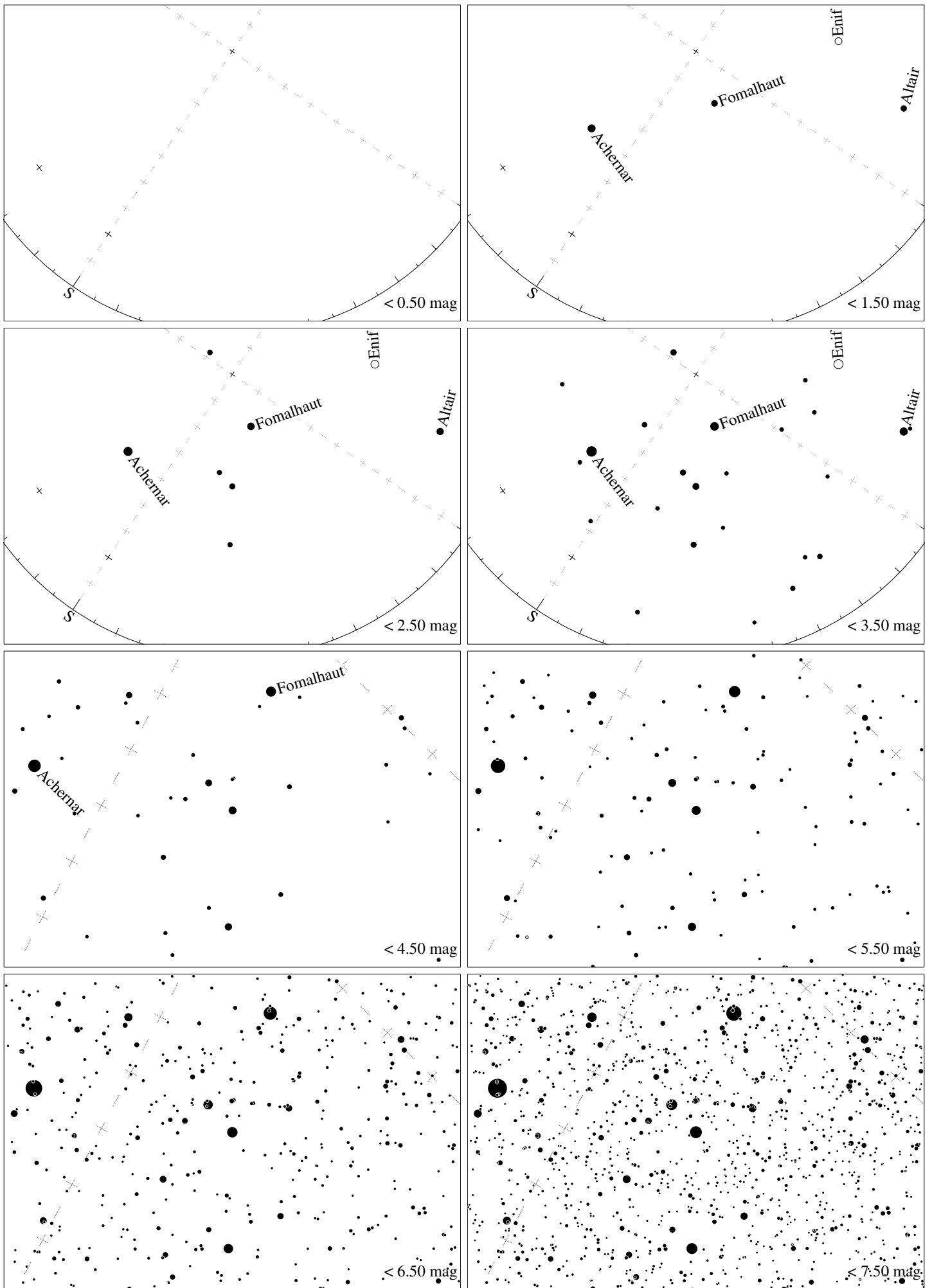
Maps for Globe at Night latitude 10° , 2015-11-06, 21 h local time (Sun at -50°), transparent air. Lines from N(E,S,W) to zenith shown (crosses each 10°). Centered on Altair (α Gruis), which is 22° to the right from S, at 28° height. Detailed maps 50° vertically, the first four maps 100° . Jan Hollan, CzechGlobe



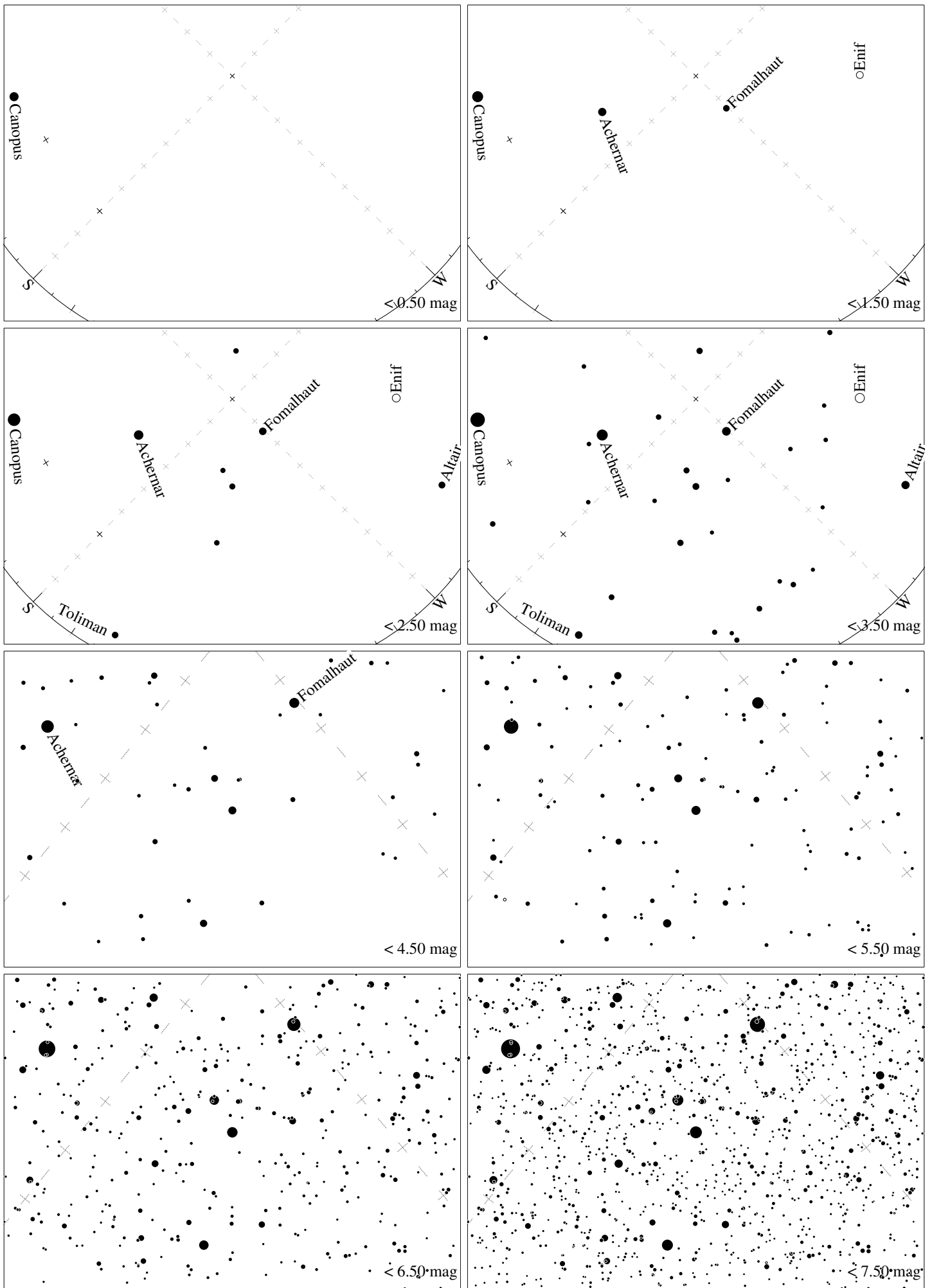
Maps for Globe at Night latitude 0° , 2015-11-06, 21 h local time (Sun at -47°), transparent air. Lines from N(E,S,W) to zenith shown (crosses each 10°). Centered on Altair (α Gruis), which is 24° to the right from S, at 37° height. Detailed maps 50° vertically, the first four maps 100° . *Jan Hollan, CzechGlobe*



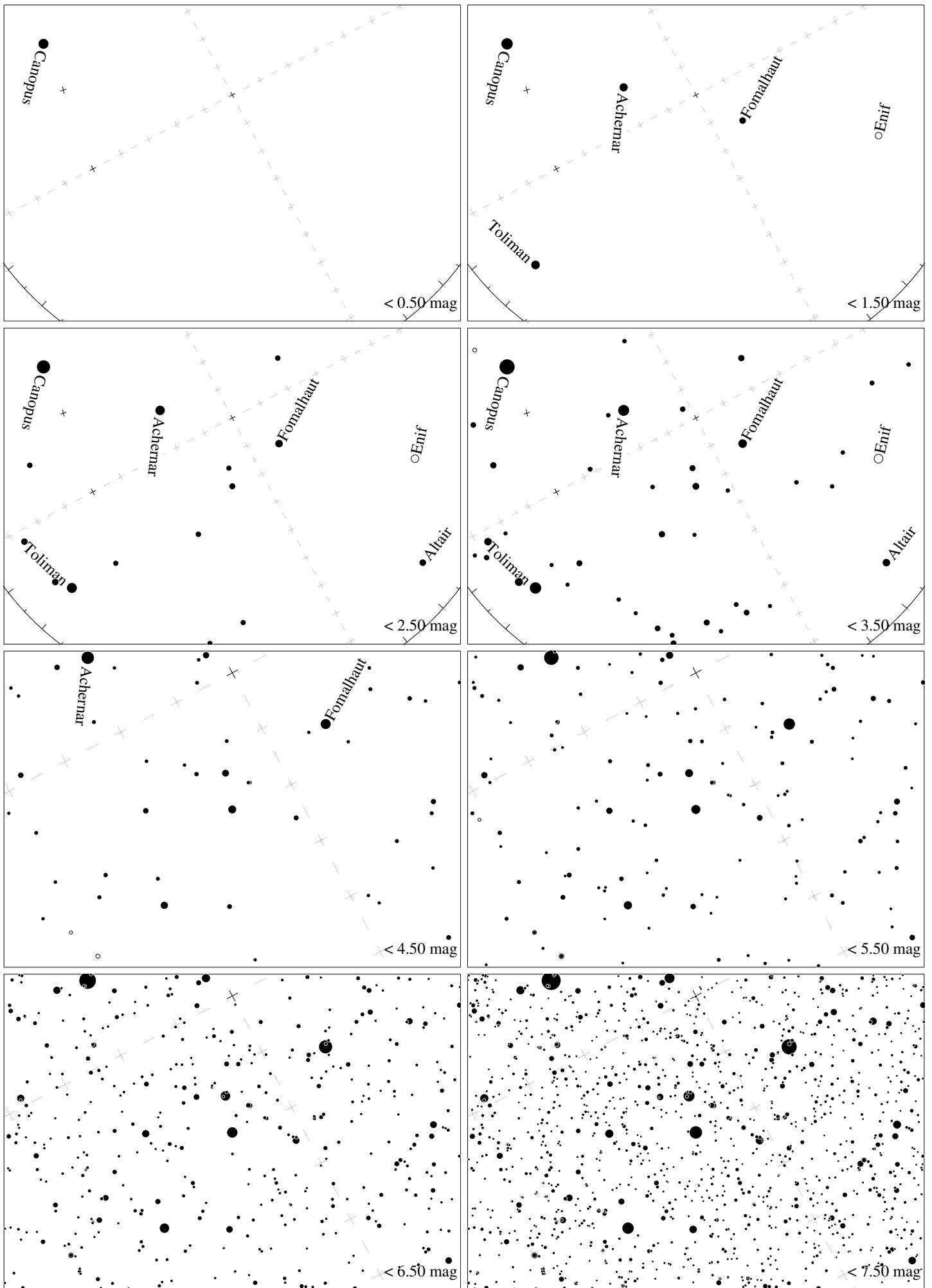
Maps for Globe at Night latitude -10° , 2015-11-06, 21 h local time (Sun at -42°), transparent air. Lines from N(E,S,W) to zenith shown (crosses each 10°). Centered on Altair (α Gruis), which is 28° to the right from S, at 46° height. Detailed maps 50° vertically, the first four maps 100° . *Jan Hollan, CzechGlobe*



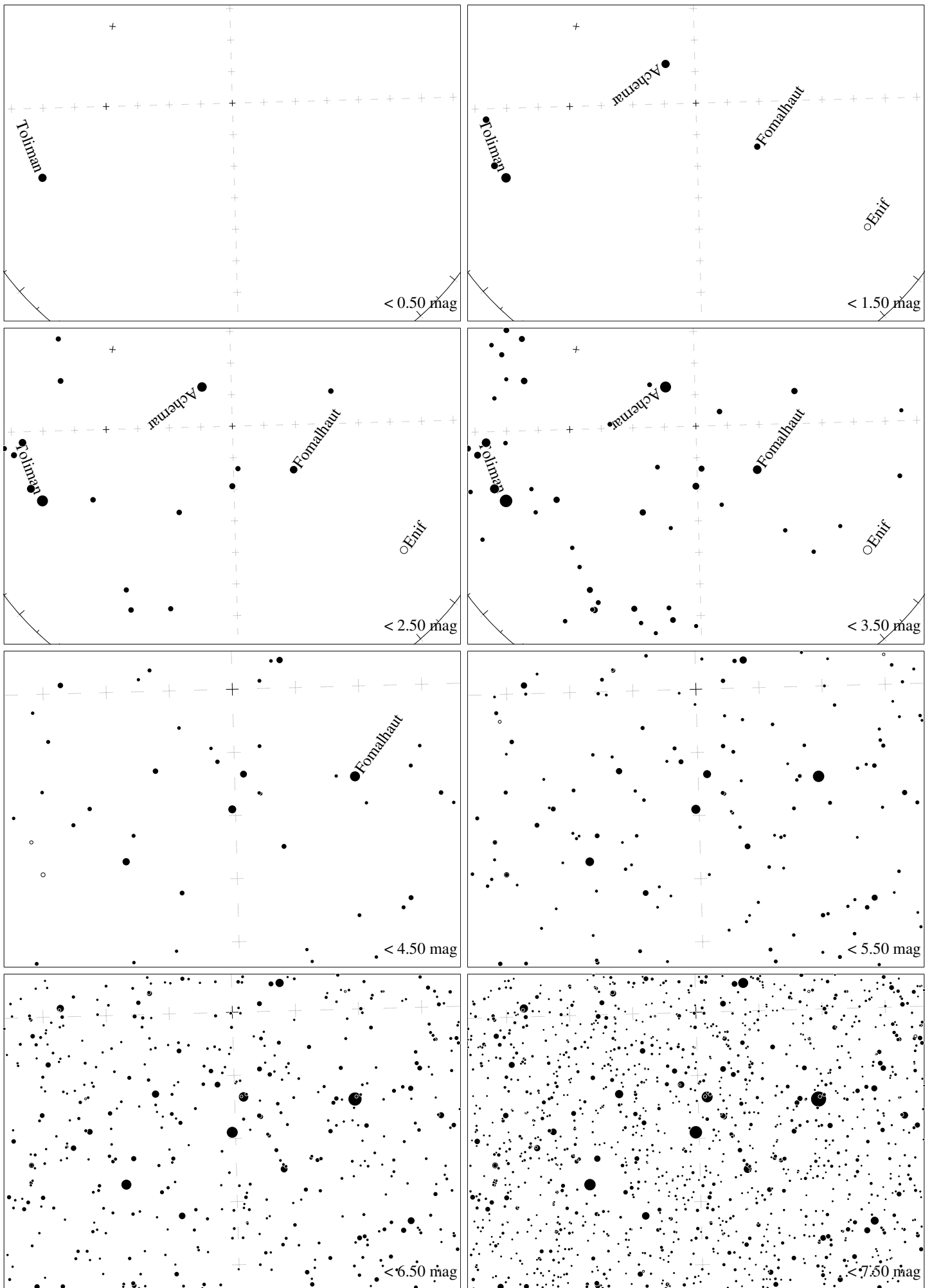
Maps for Globe at Night latitude -20° , 2015-11-06, 21 h local time (Sun at -36°), transparent air. Lines from N(E,S,W) to zenith shown (crosses each 10°). Centered on Altair (α Gruis), which is 34° to the right from S, at 55° height. Detailed maps 50° vertically, the first four maps 100° . *Jan Hollan, CzechGlobe*



Maps for Globe at Night latitude -30° , 2015-11-06, 21 h local time (Sun at -29°), transparent air. Lines from N(E,S,W) to zenith shown (crosses each 10°). Centered on Alnair (α Gruis), which is 44° to the right from S, at 62° height. Detailed maps 50° vertically, the first four maps 100° . *Jan Hollan, CzechGlobe*



Maps for Globe at Night latitude -40° , 2015-11-06, 21 h local time (Sun at -22°), transparent air. Lines from N(E,S,W) to zenith shown (crosses each 10°). Centered on Alnair (α Gruis), which is 62° to the right from S, at 68° height. Detailed maps 50° vertically, the first four maps 100° . *Jan Hollan, CzechGlobe*



Maps for Globe at Night latitude -50° , 2015-11-06, 21 h local time (Sun at -15°), transparent air. Lines from N(E,S,W) to zenith shown (crosses each 10°). Centered on Alnair (α Gruis), which is 88° to the right from S, at 71° height. Detailed maps 50° vertically, the first four maps 100° . *Jan Hollan, CzechGlobe*