

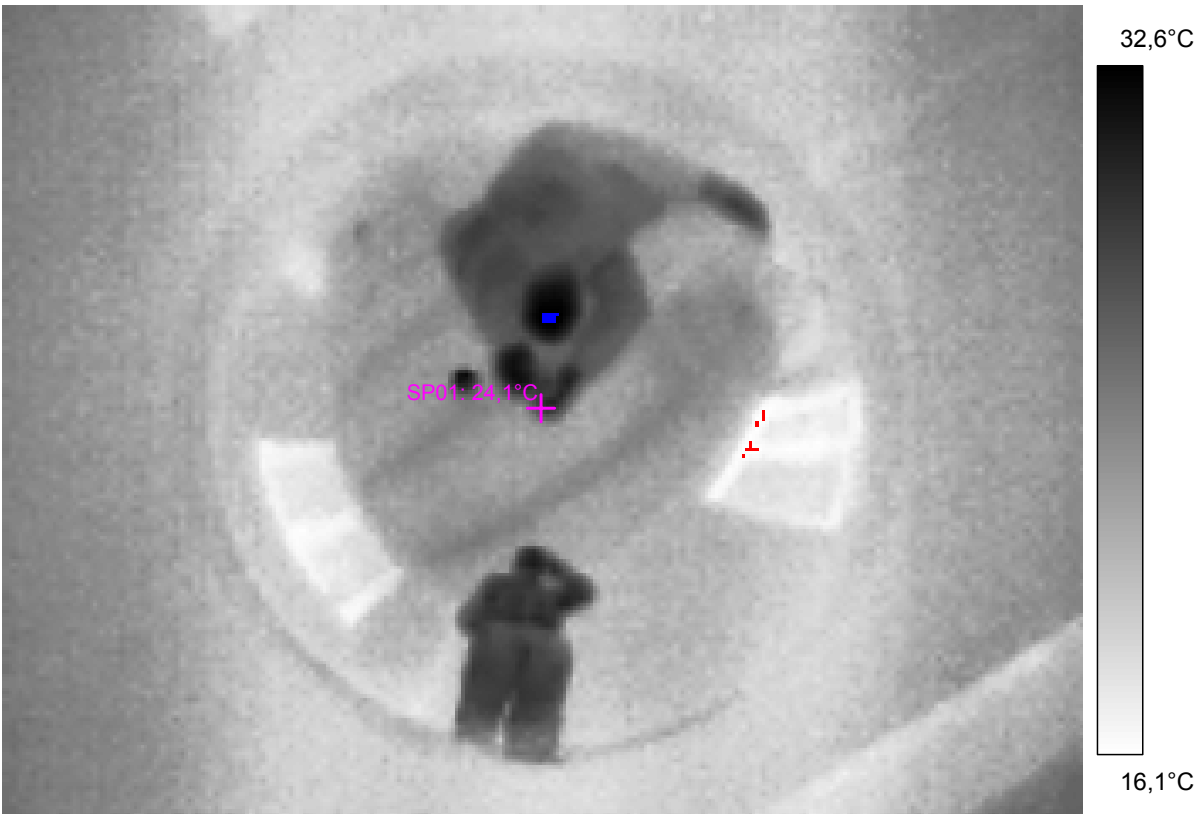
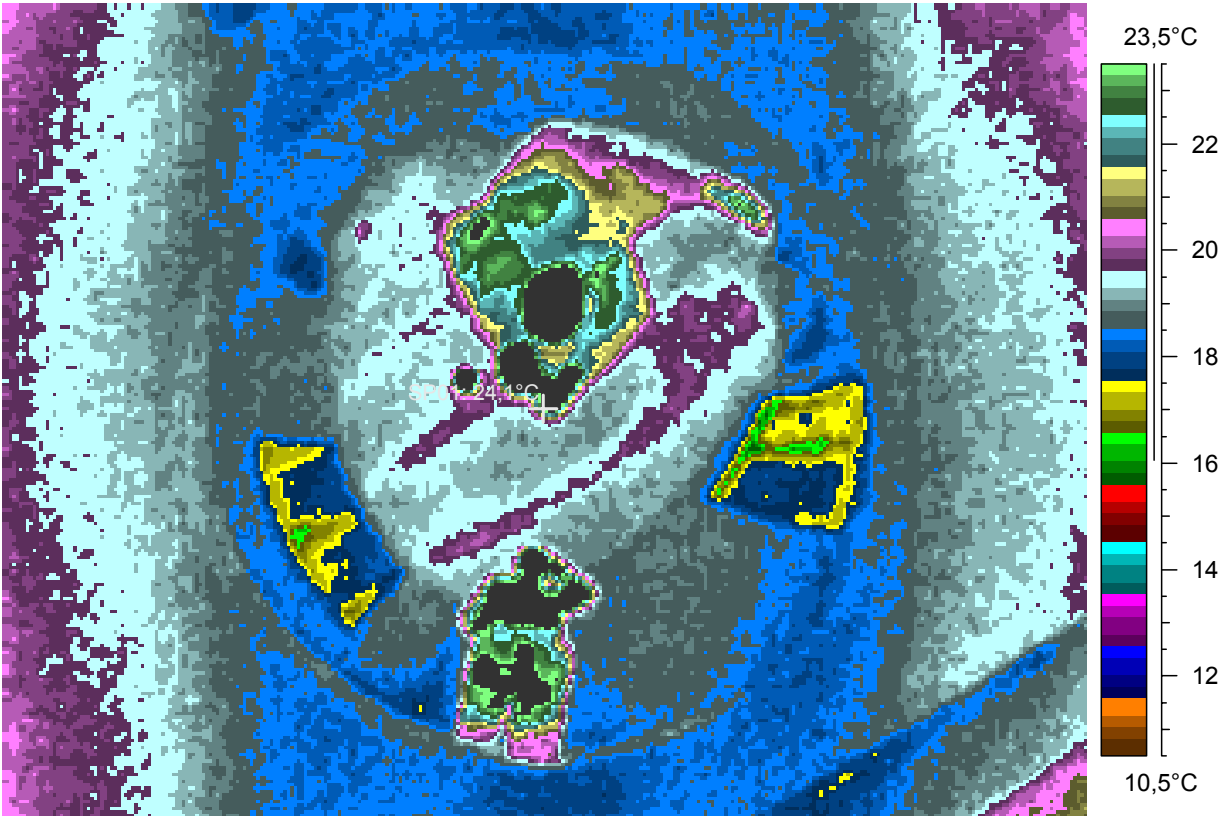
Ceiling mirrored in an aluminized condenser lens. The logs are apparent probably thanks to their heat capacity. Photographer with camera is the warm feature, another person stands nearby.

1 - Ir_1561.jpg

Label	Value
IR : max	33,1°C
IR : min	15,6°C
SP01	24,1°C

12.2.2005

18:30:05



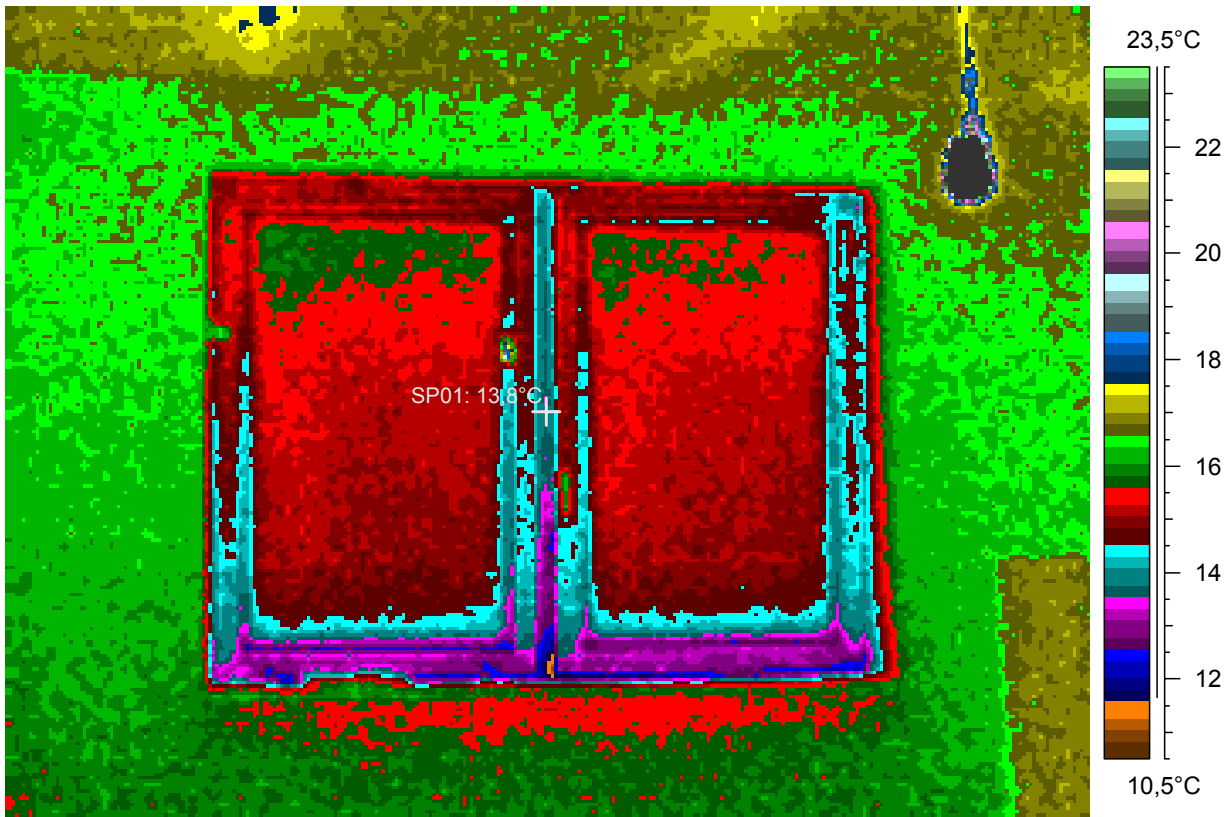
A bare bulb is the hot spot. Draft along the (tight)window is apparent from the lower temperature just below it. 17 Celsius seems to be an equilibrium temperature. Pane is just 2 K colder.

2 - Ir_1562.jpg

Label	Value
IR : max	118,6°C
IR : min	11,0°C
SP01	13,8°C

12.2.2005

18:33:20



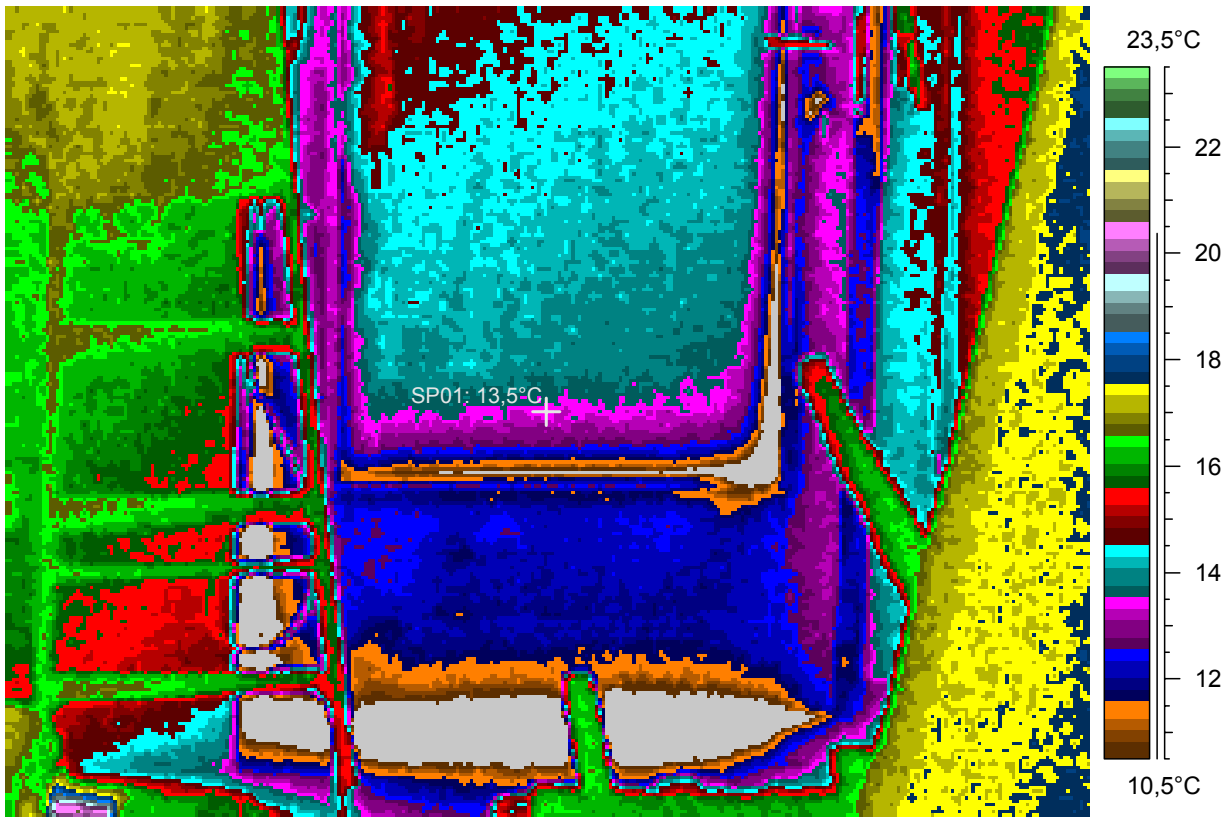
Drafts through the eastern door are apparent (the door has been damaged by a thief several times). This part will be improved.

3 - Ir_1563.jpg

Label	Value
IR : max	20,8°C
IR : min	4,8°C
SP01	13,5°C

12.2.2005

18:34:11



comments:

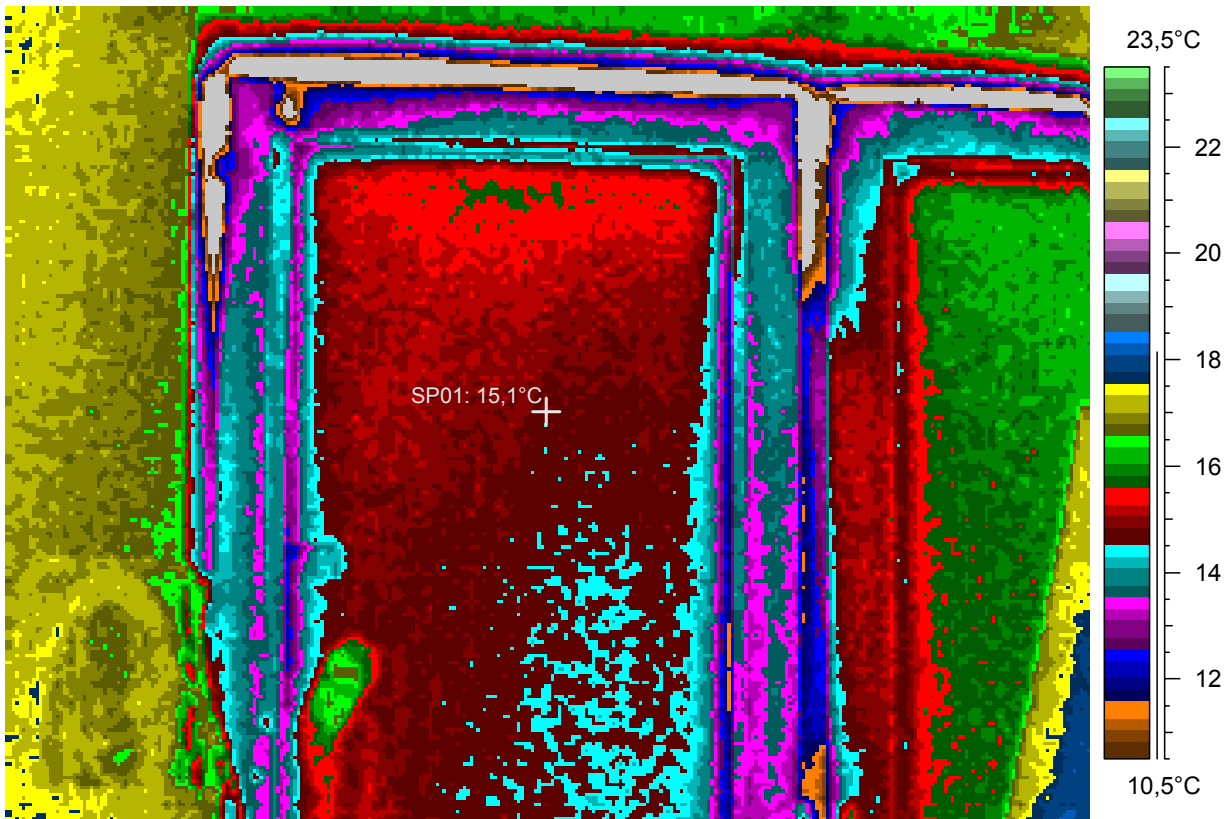
blabla

4 - Ir_1564.jpg

Label	Value
IR : max	18,2°C
IR : min	6,2°C
SP01	15,1°C

12.2.2005

18:34:17



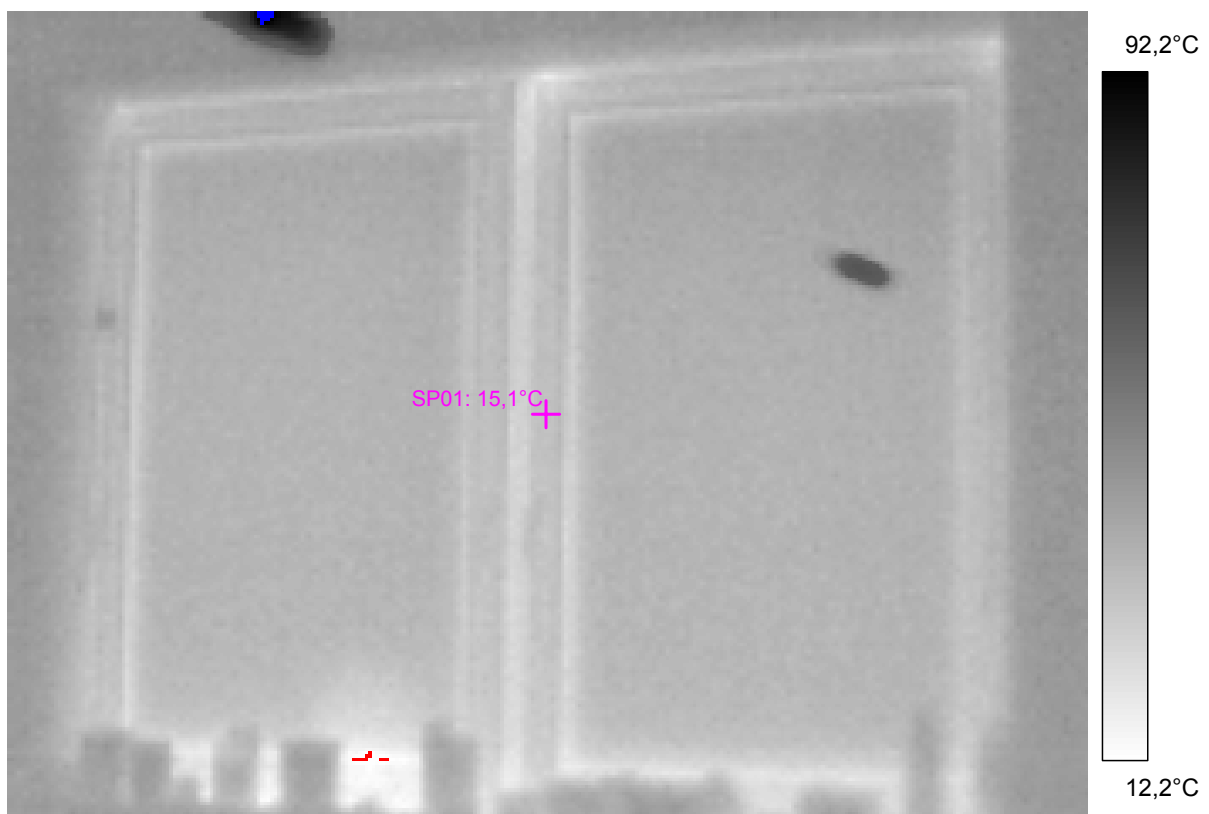
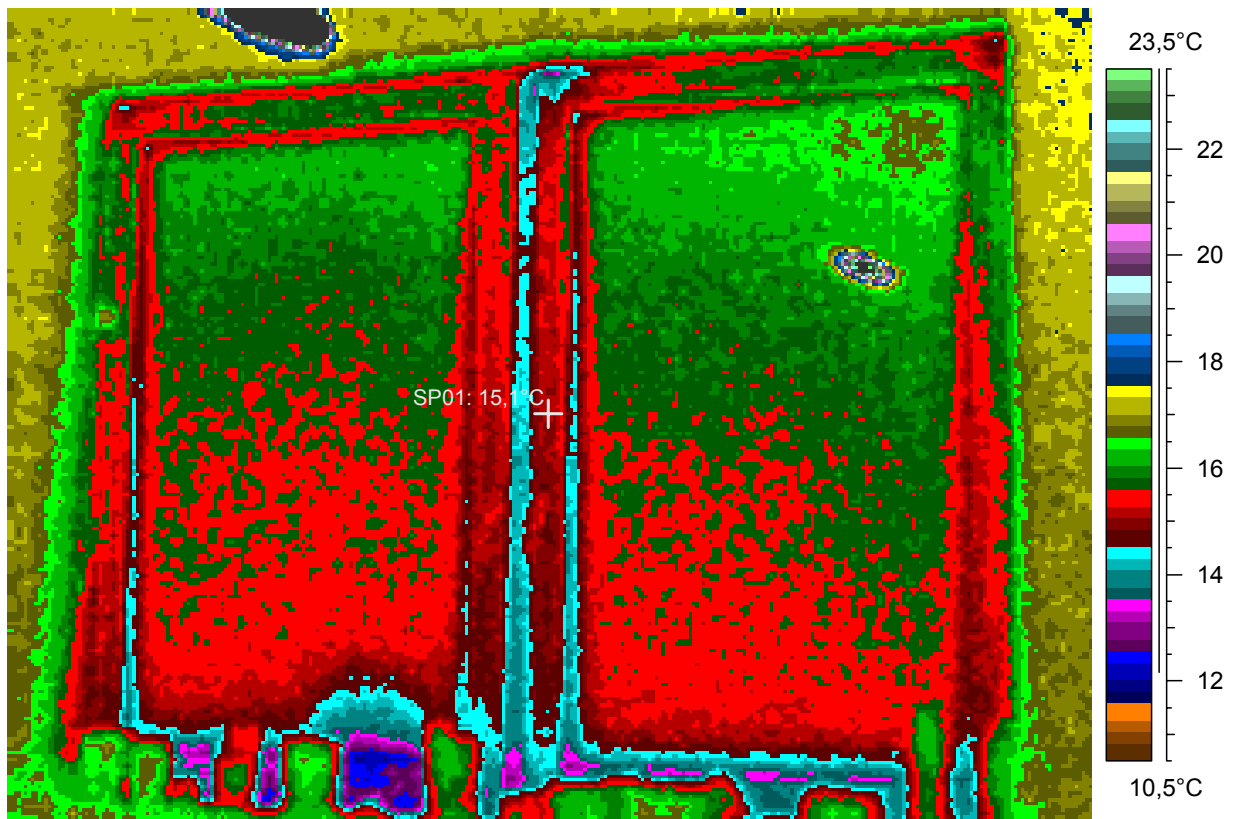
An untight point in the interior upper window corner.

5 - Ir_1565.jpg

Label	Value
IR : max	108,2°C
IR : min	11,9°C
SP01	15,1°C

12.2.2005

18:34:52



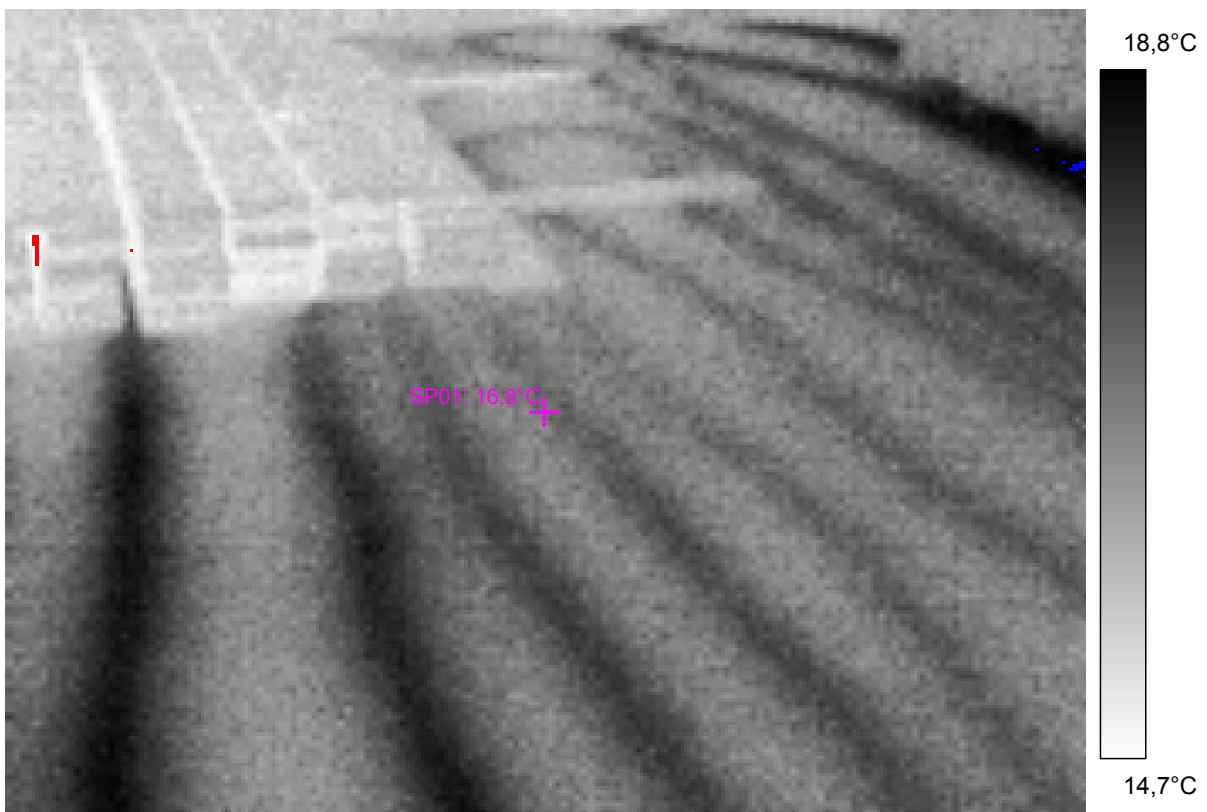
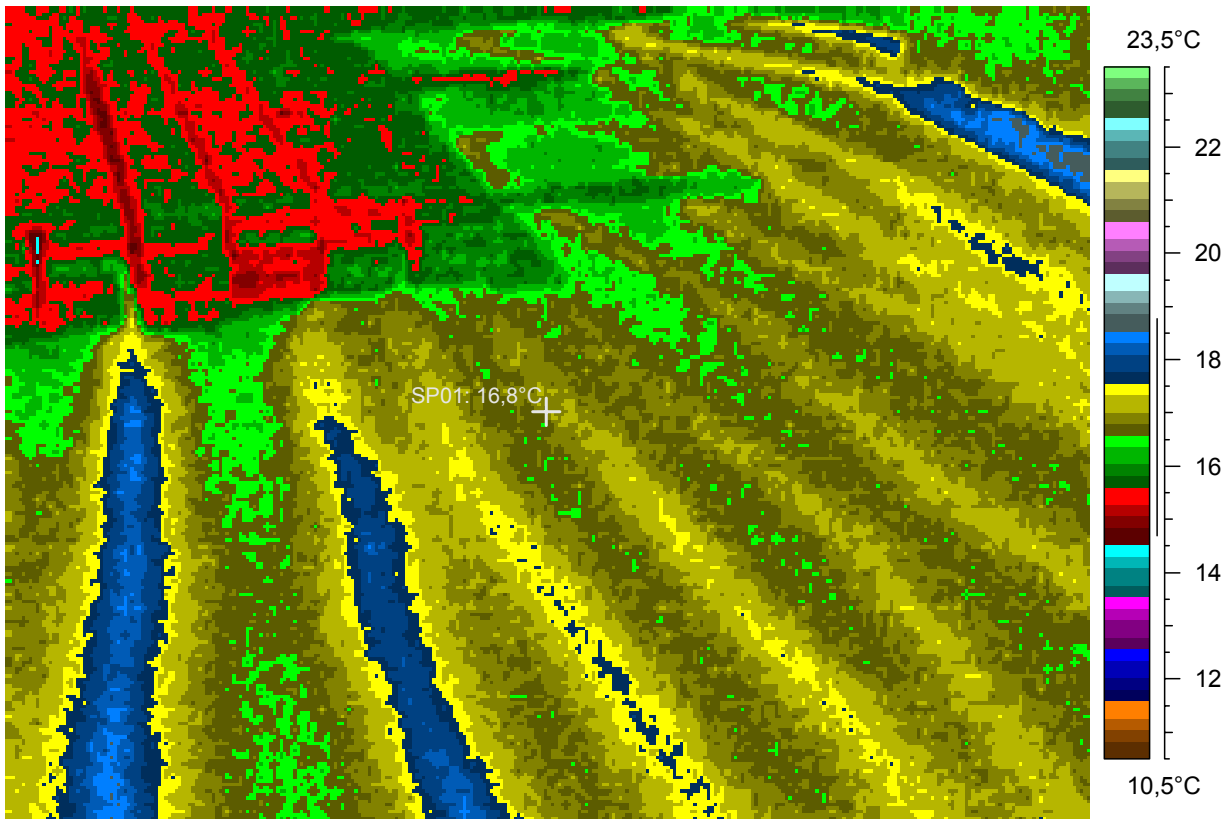
First floor heating. A heap of boards at the top left, representing an undisturbed interior temperature of 15.5 Celsius.

6 - Ir_1566.jpg

Label	Value
IR : max	18,9°C
IR : min	14,4°C
SP01	16,8°C

12.2.2005

18:35:52



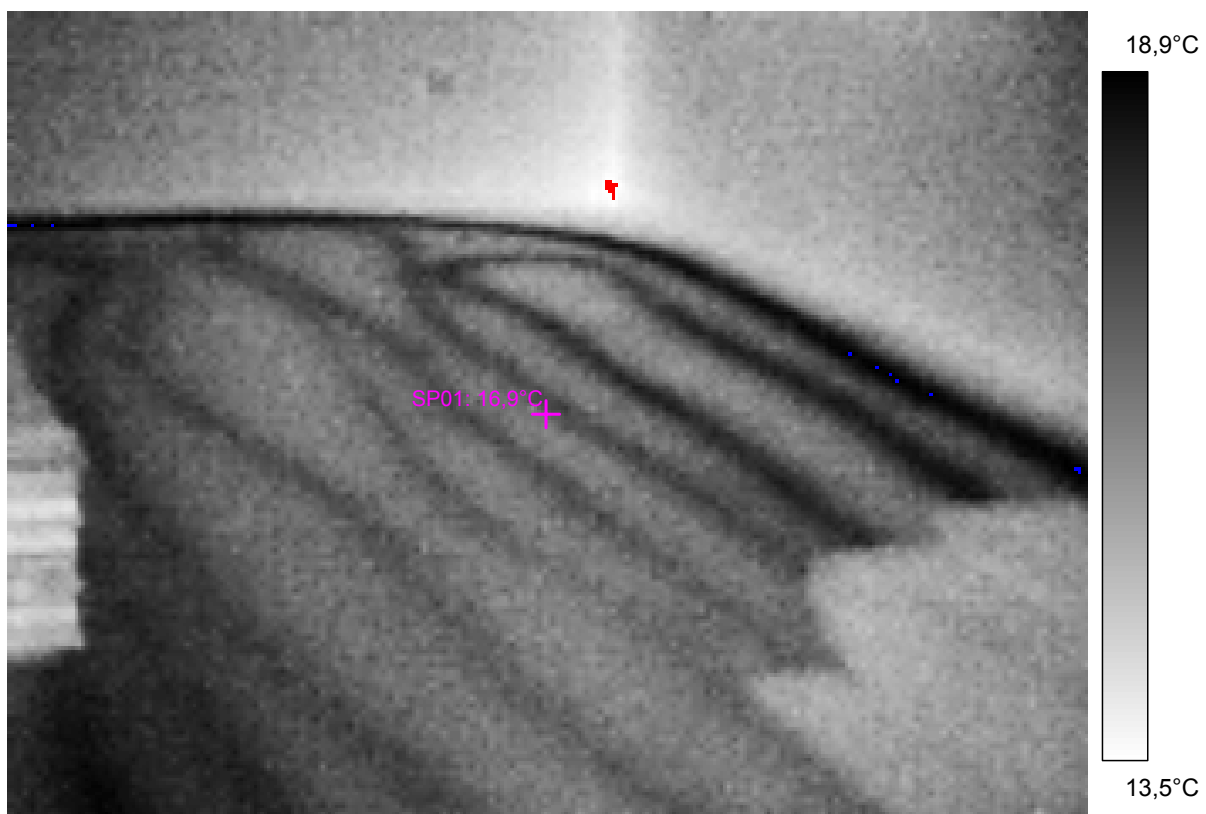
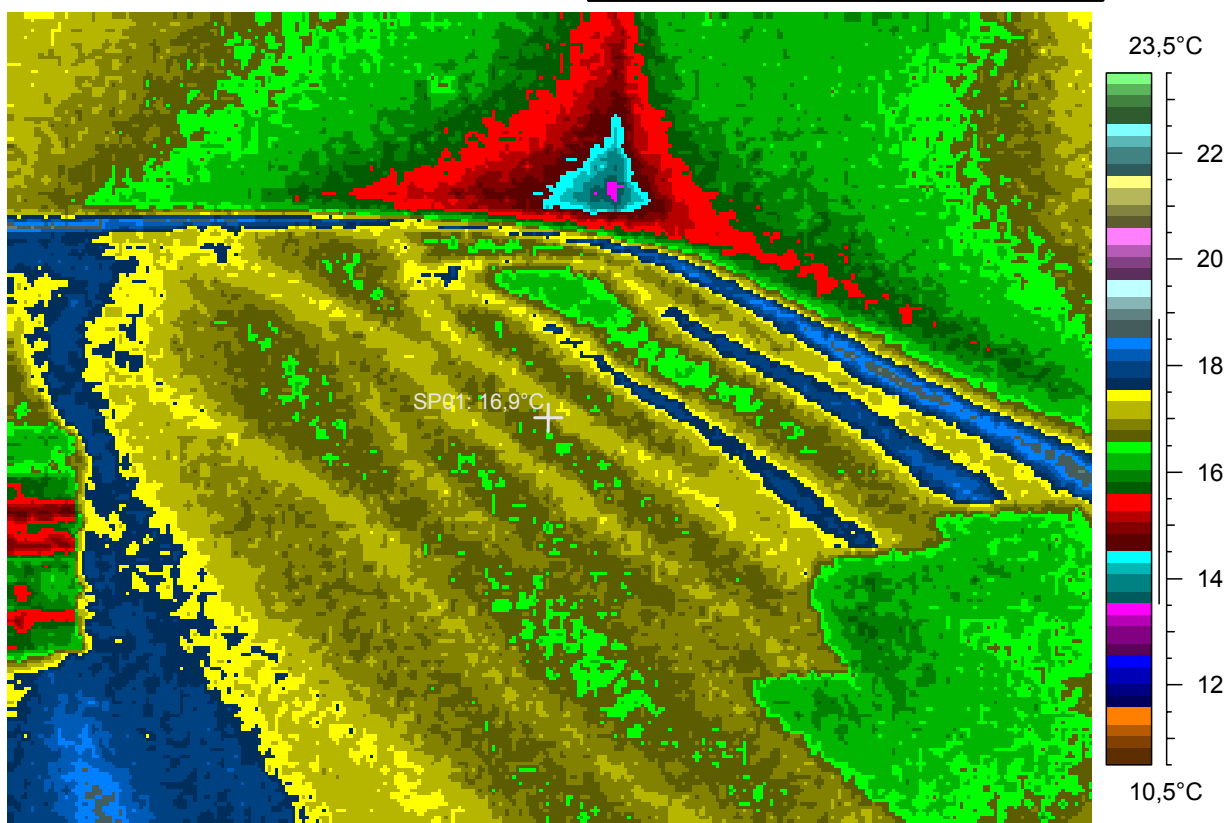
A geometric heat bridge at the corner, some 3.5 K colder than a wall far from it.

7 - Ir_1567.jpg

Label	Value
IR : max	19,1°C
IR : min	13,4°C
SP01	16,9°C

12.2.2005

18:36:30



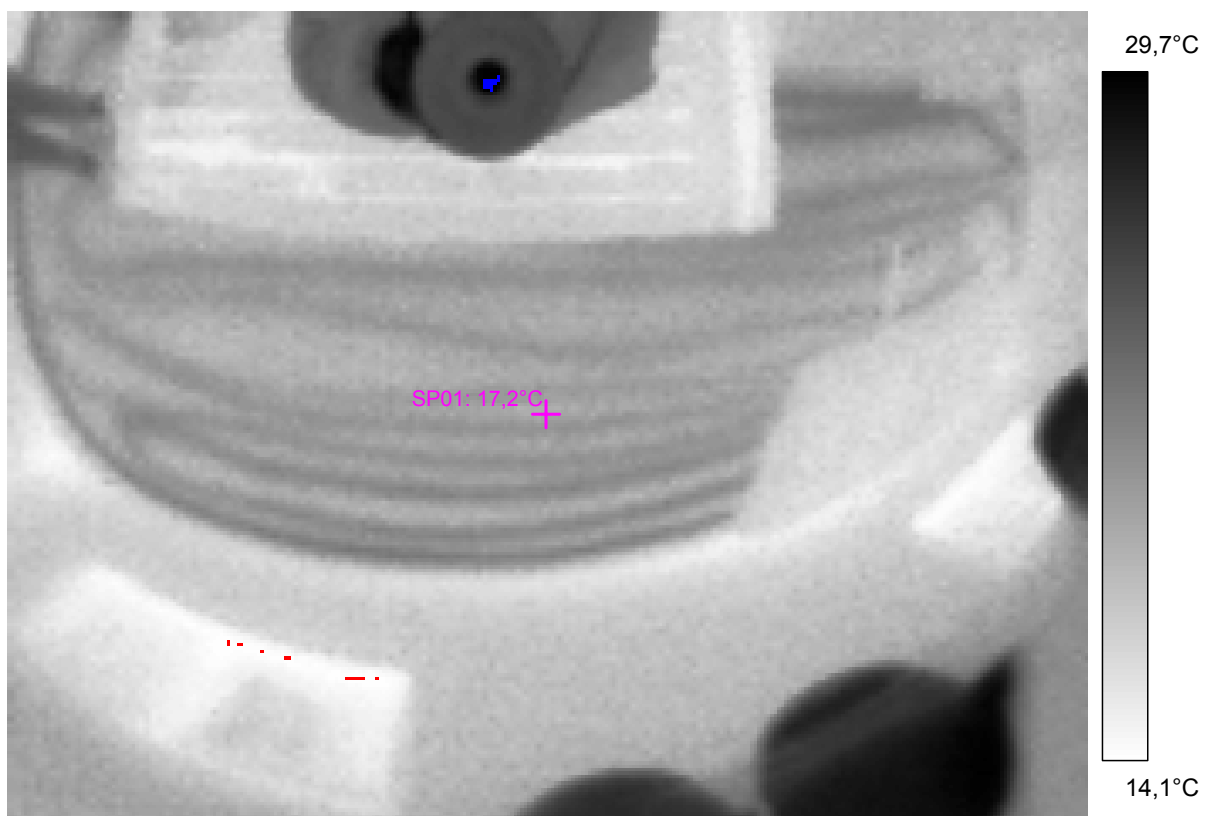
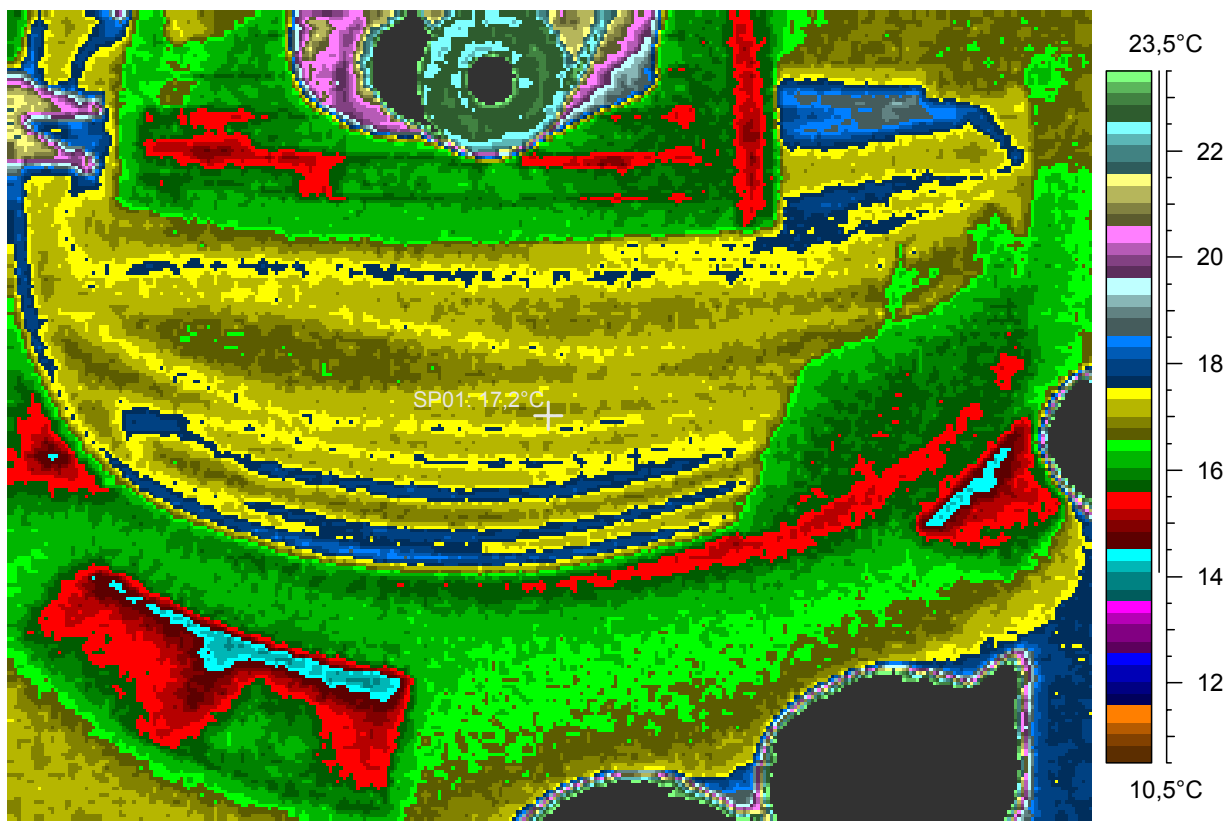
The floor and walls mirrored in a condensor lens held above the camera.
I'm standing on the heap of boards when imaging.

8 - Ir_1568.jpg

Label	Value
IR : max	30,1°C
IR : min	13,9°C
SP01	17,2°C

12.2.2005

18:39:01



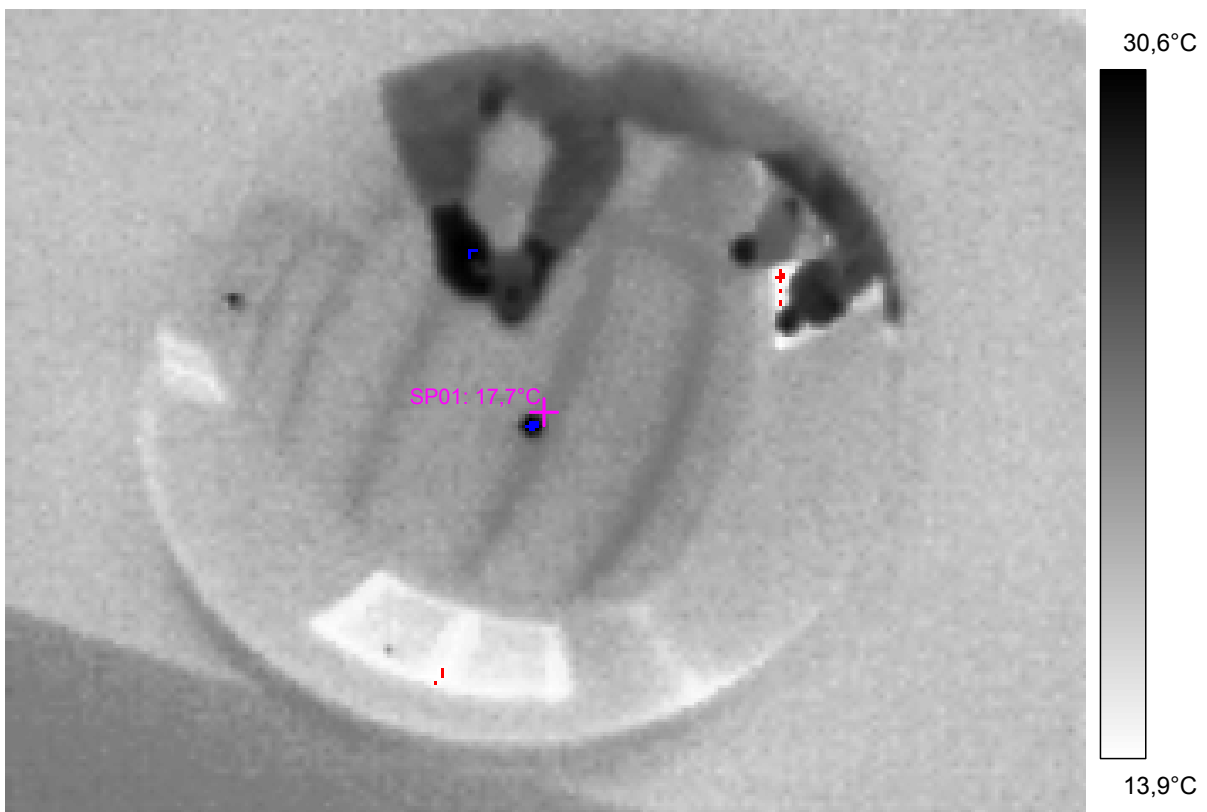
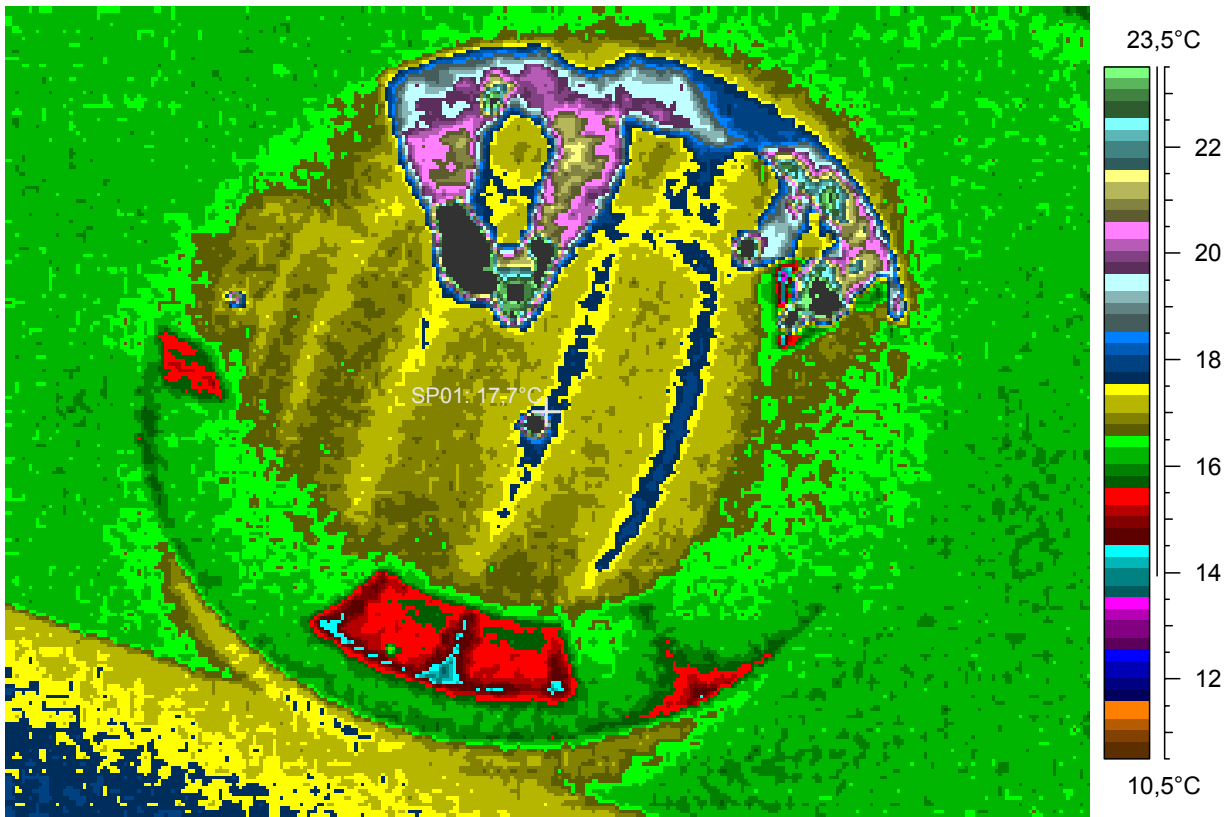
Ceiling, once more, in a condensor lens. Jura and Yvonna are shown too.

9 - Ir_1569.jpg

Label	Value
IR : max	45,4°C
IR : min	12,8°C
SP01	17,7°C

12.2.2005

18:40:54

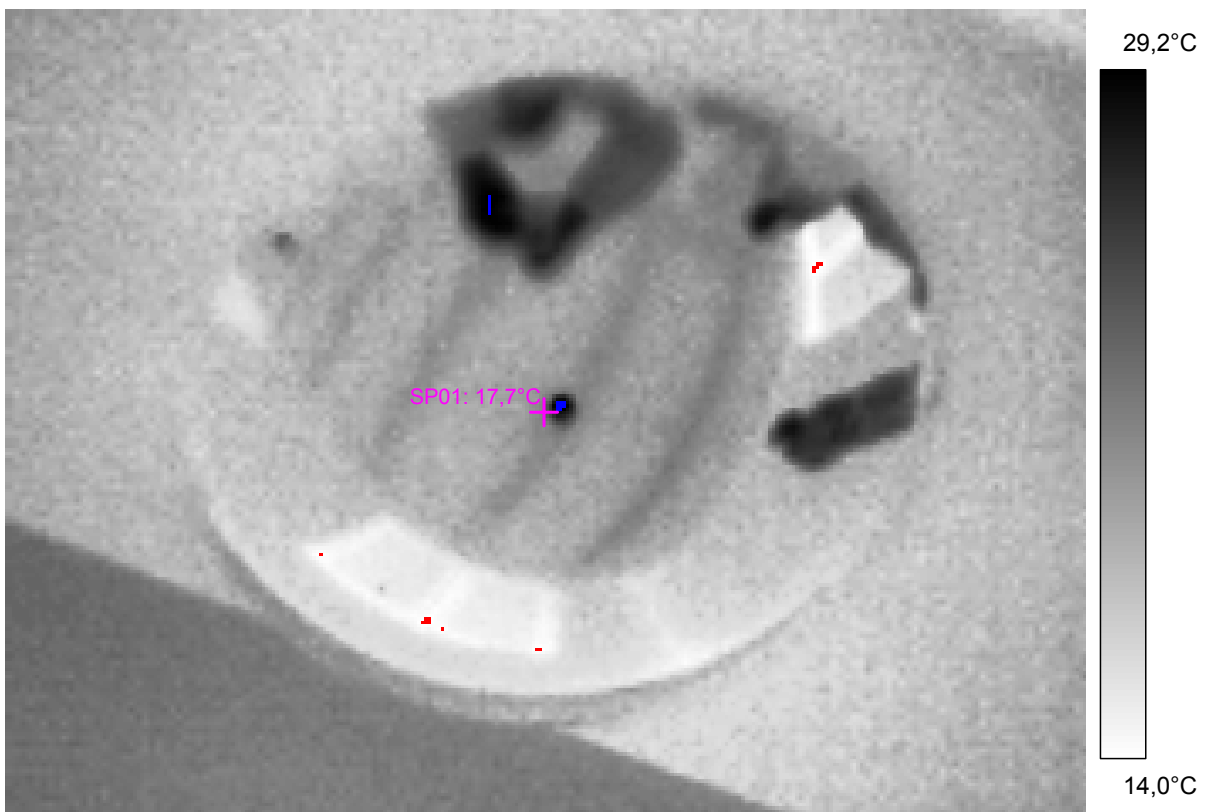
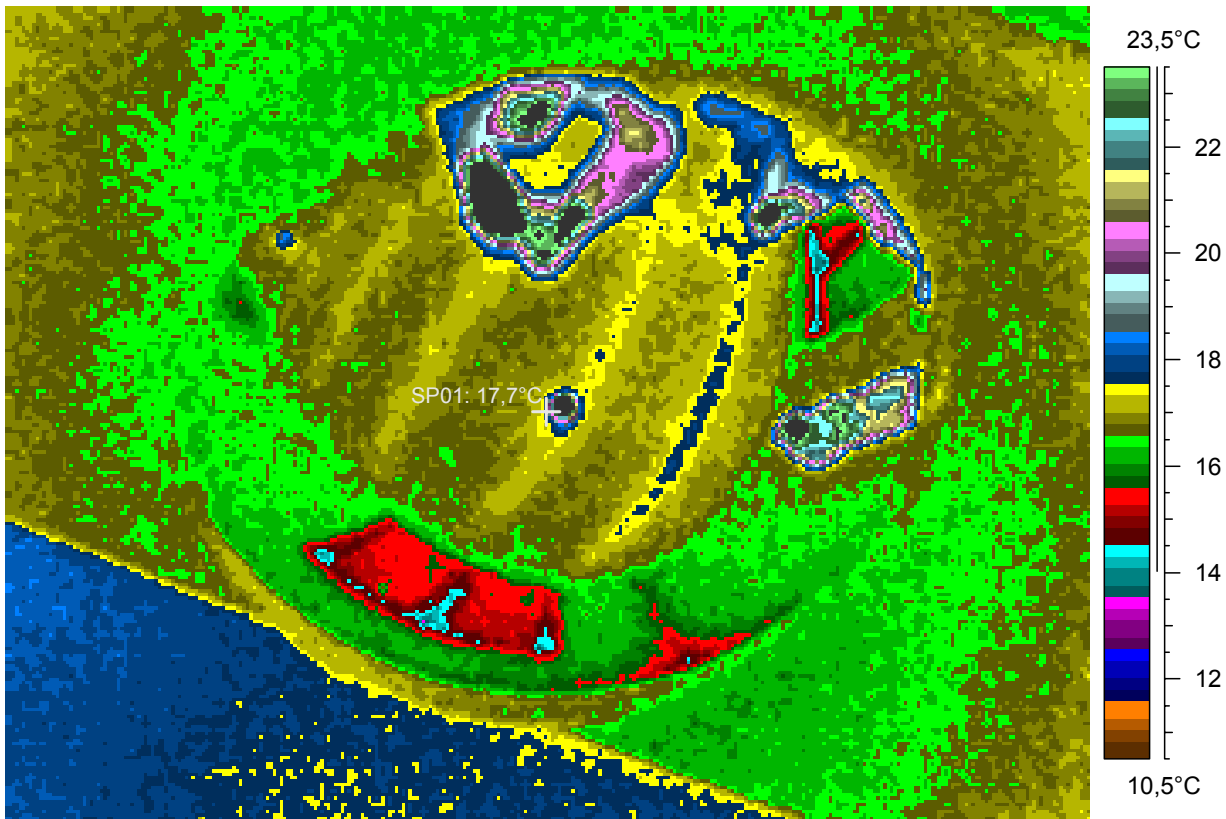


10 - Ir_1570.jpg

Label	Value
IR : max	33,6°C
IR : min	13,5°C
SP01	17,7°C

12.2.2005

18:41:58



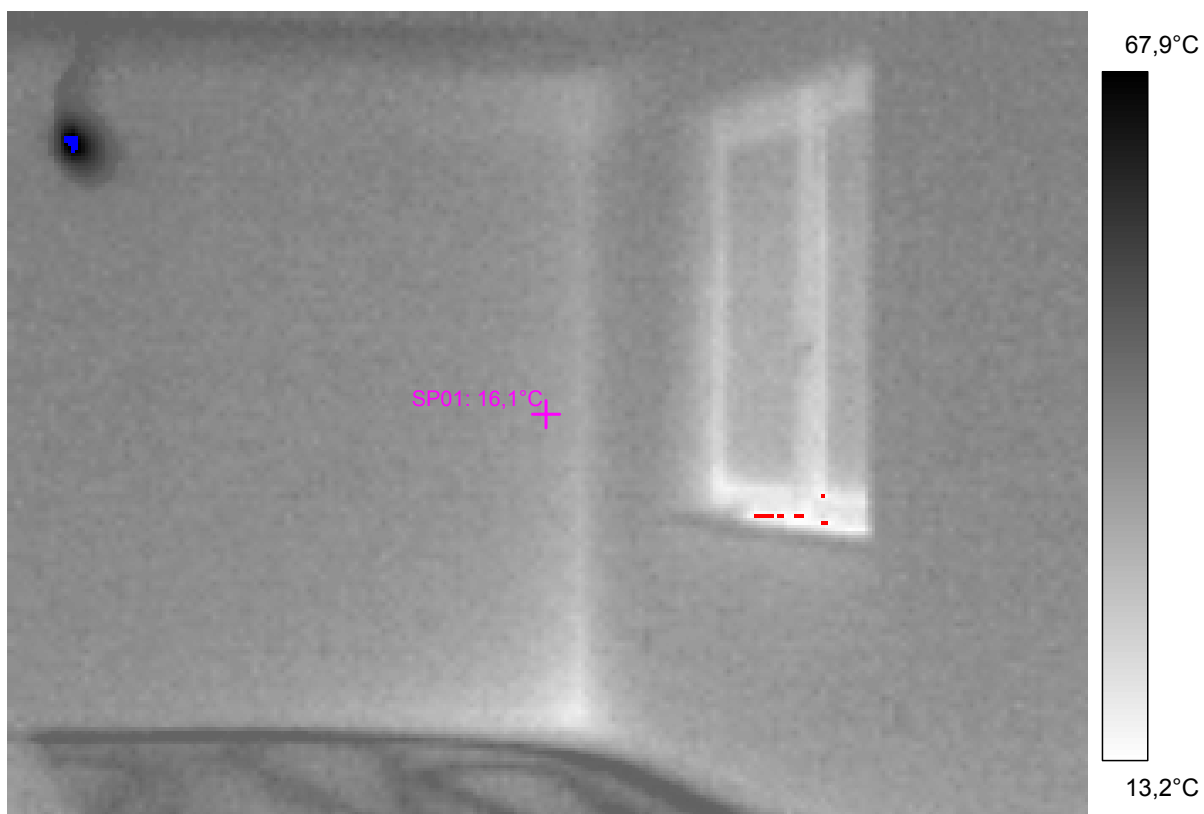
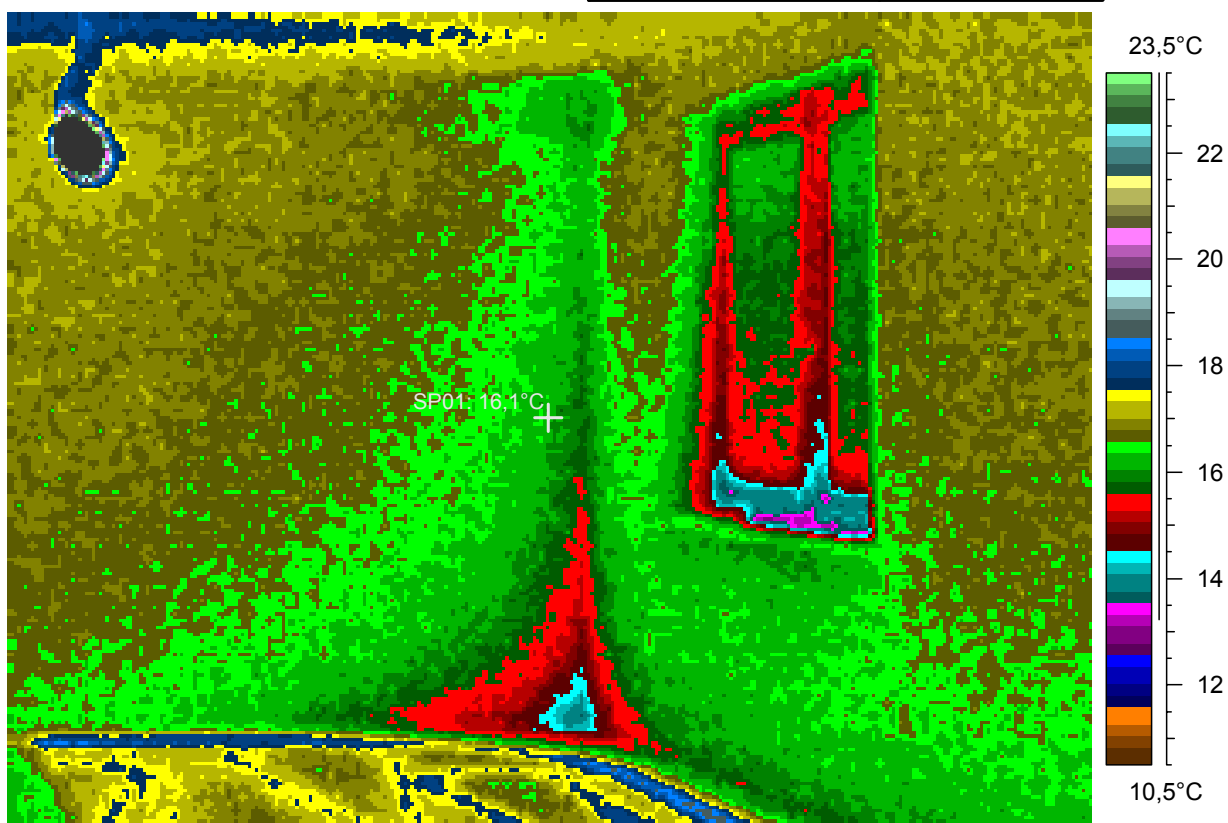
The whole southeastern inner edge.

11 - Ir_1571.jpg

Label	Value
IR : max	78,3°C
IR : min	13,1°C
SP01	16,1°C

12.2.2005

18:43:49



comments:

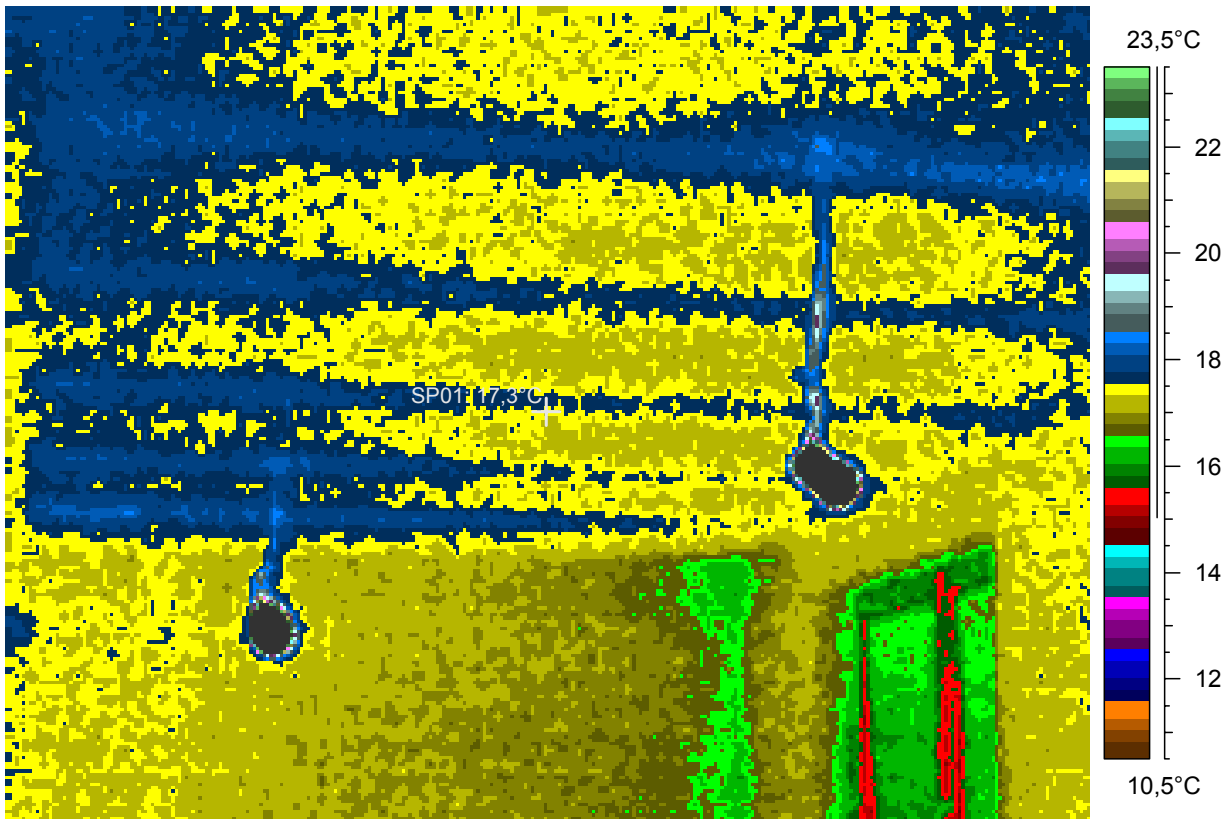
blabla

12 - Ir_1572.jpg

Label	Value
IR : max	92,7°C
IR : min	14,8°C
SP01	17,3°C

12.2.2005

18:44:05



comments:

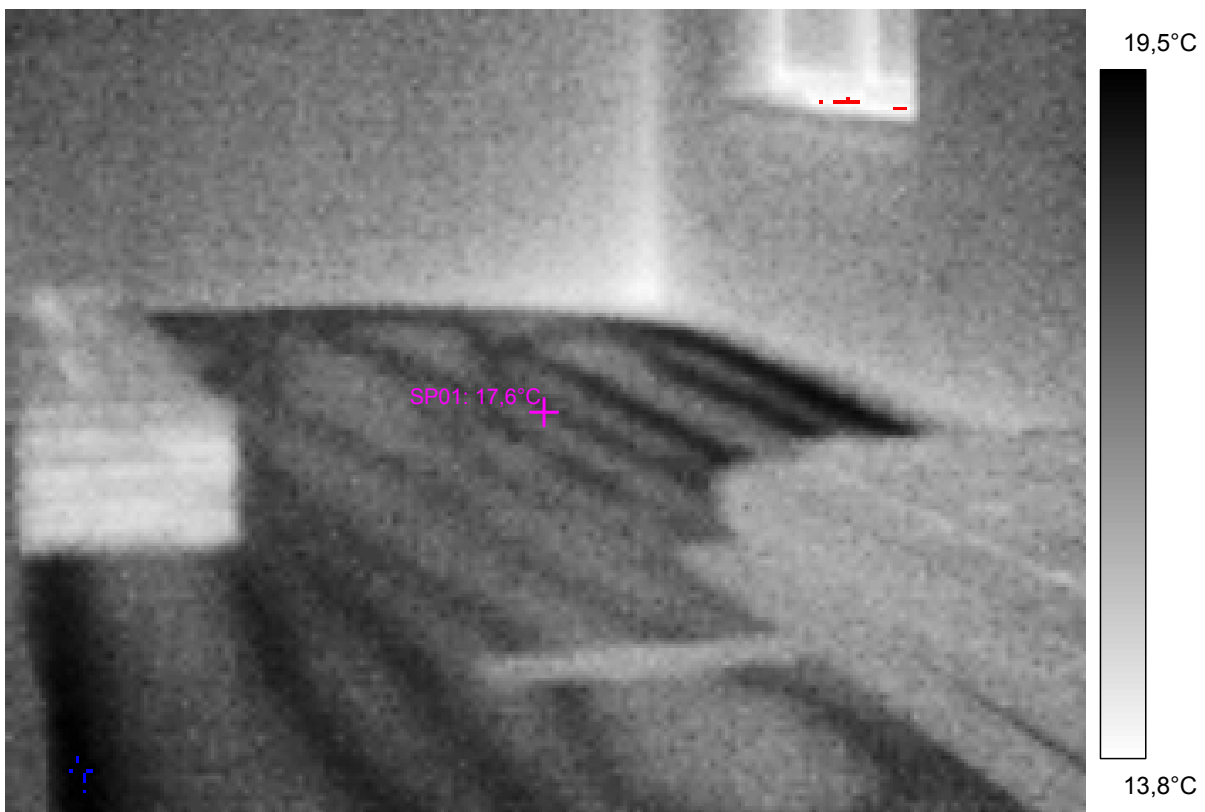
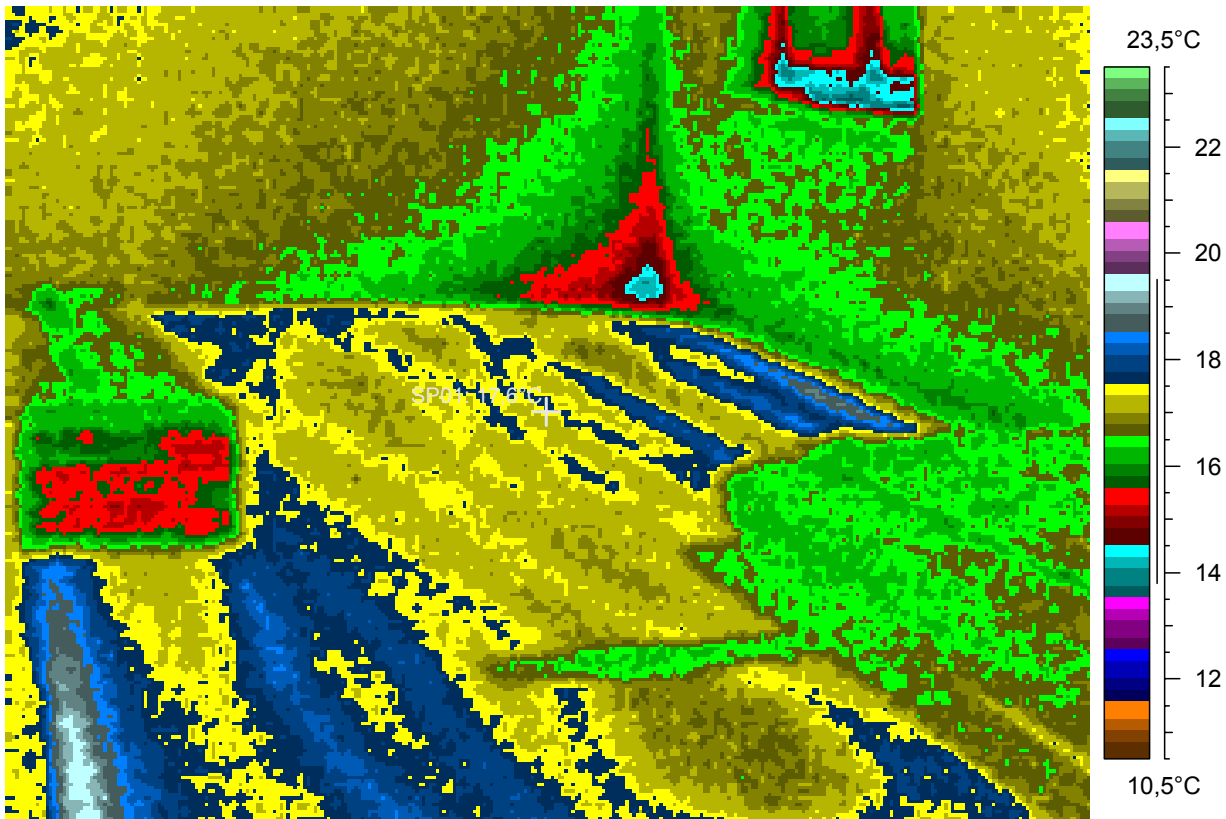
blabla

13 - Ir_1573.jpg

Label	Value
IR : max	19,6°C
IR : min	13,6°C
SP01	17,6°C

12.2.2005

18:44:14

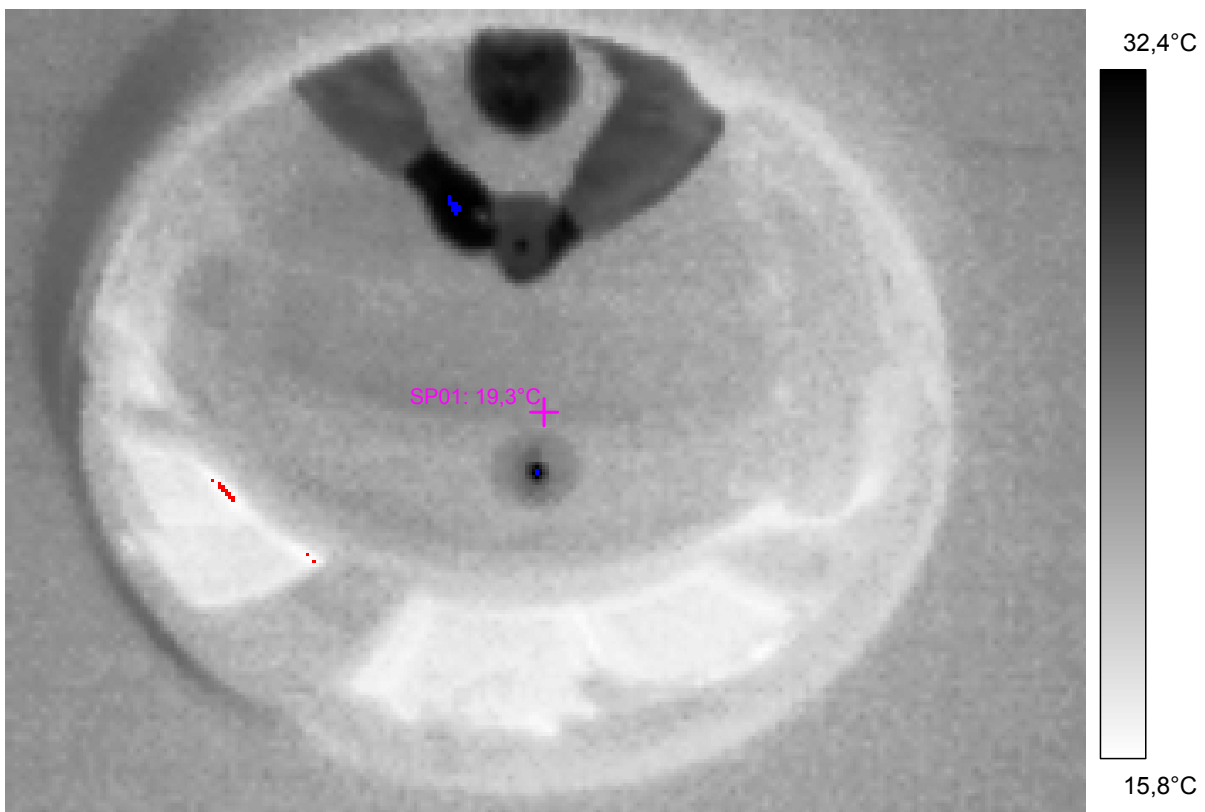
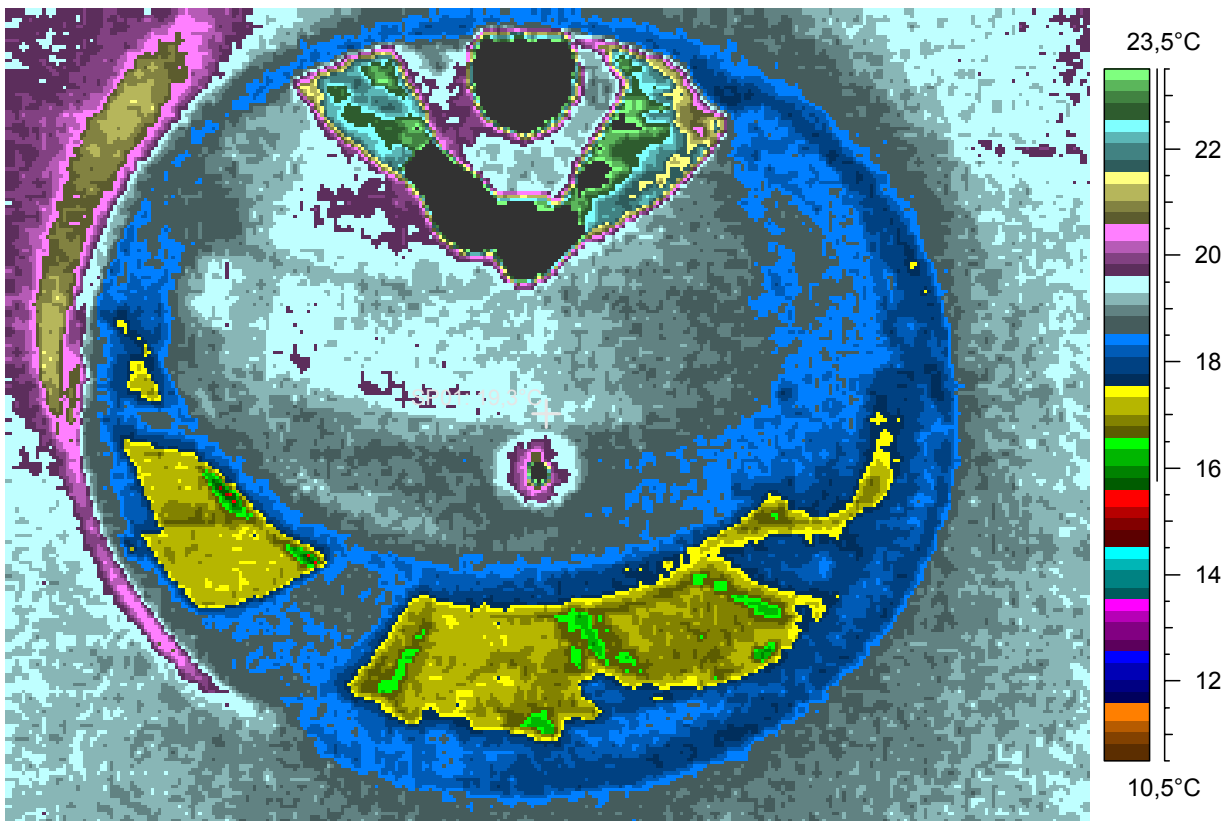


14 - Ir_1580.jpg

Label	Value
IR : max	37,7°C
IR : min	15,2°C
SP01	19,3°C

12.2.2005

18:52:23



comments:

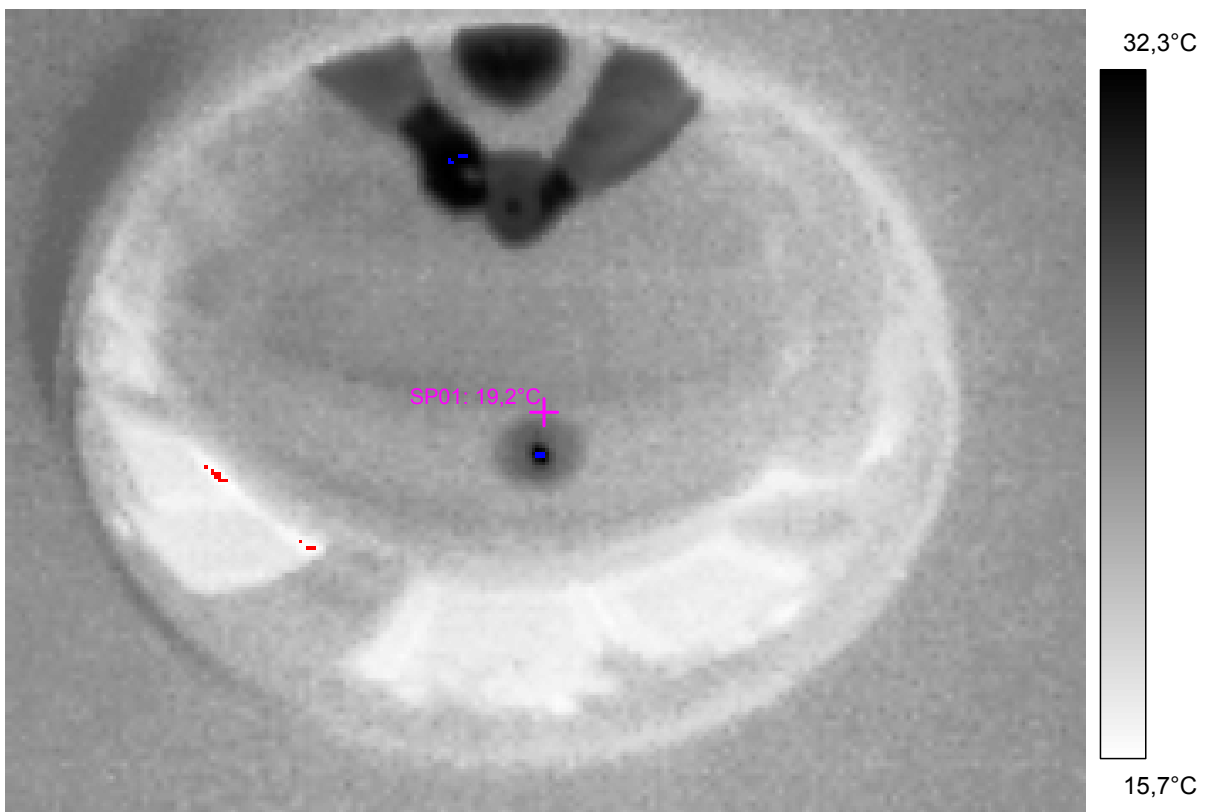
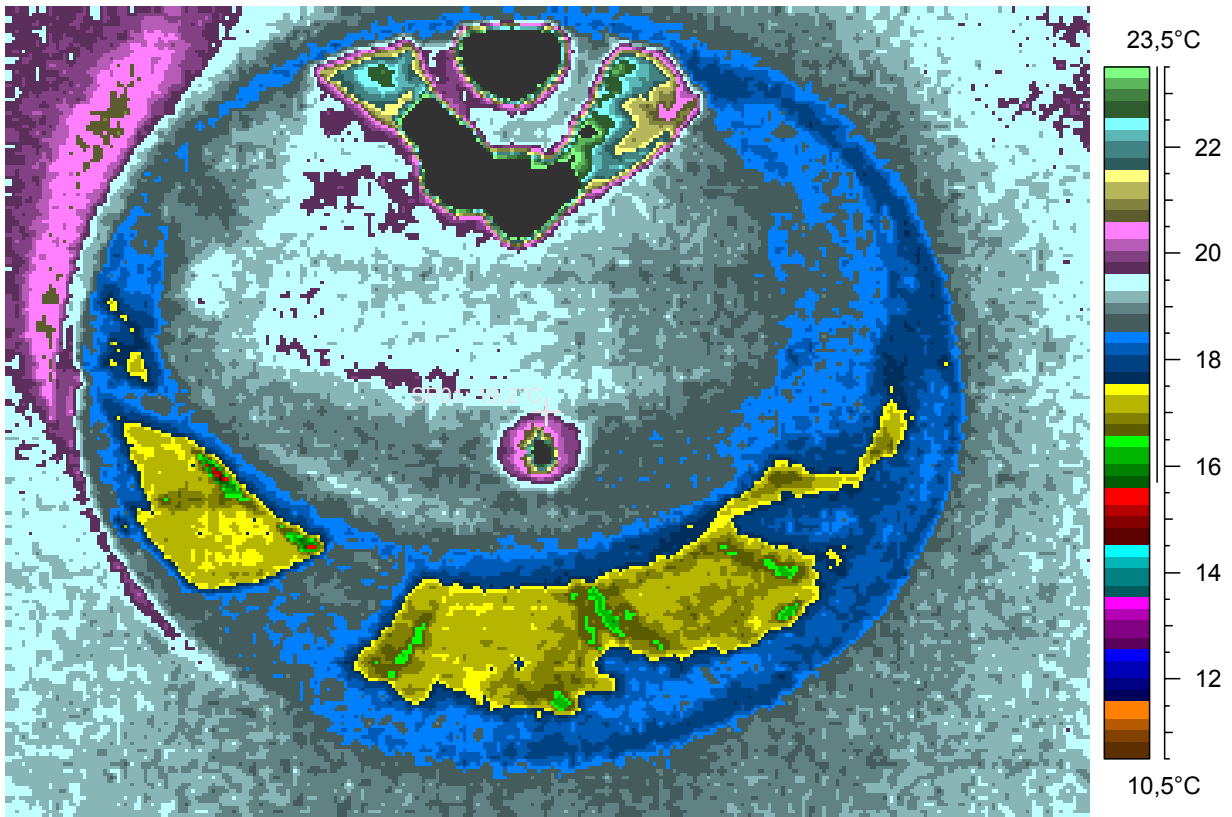
blabla

15 - Ir_1581.jpg

Label	Value
IR : max	35,1°C
IR : min	14,9°C
SP01	19,2°C

12.2.2005

18:53:10



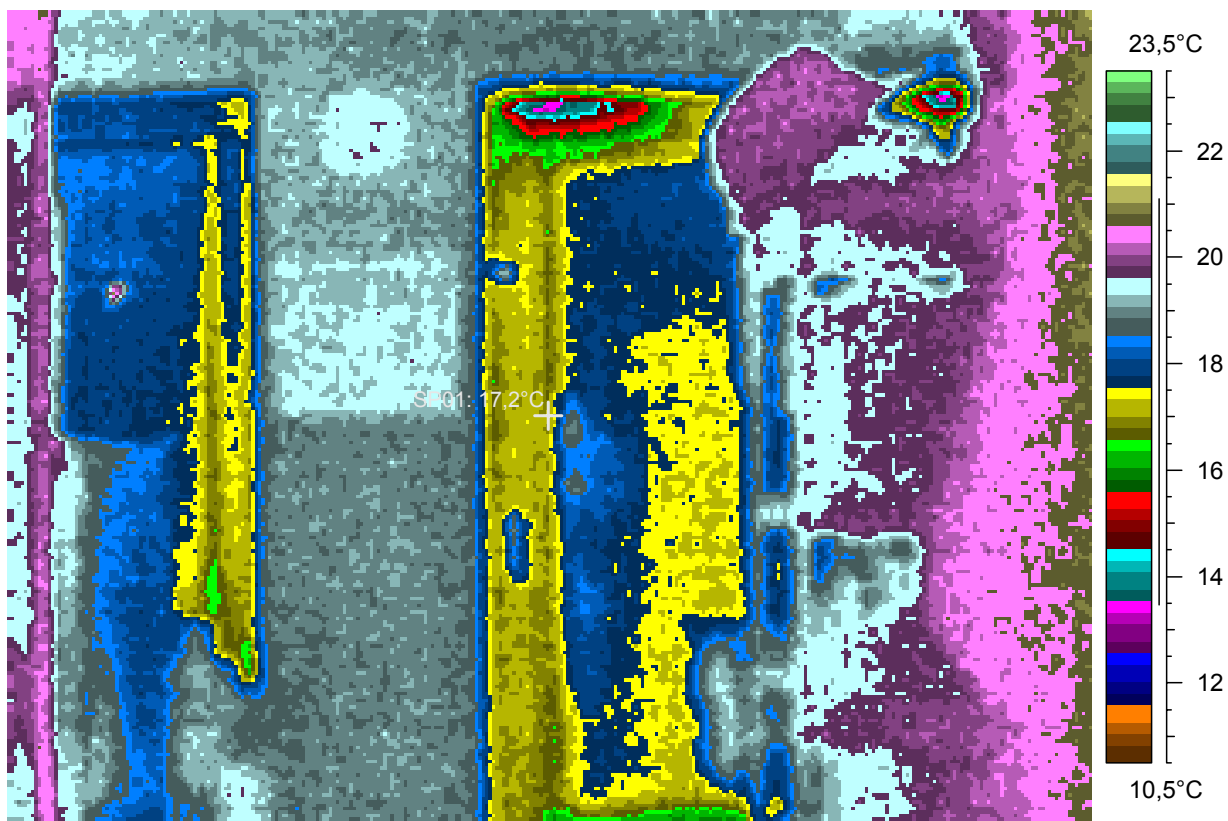
Windows in an inhabited flat. A bad seal (not pressed enough perhaps) is visible.

16 - Ir_1582.jpg

Label	Value
IR : max	21,2°C
IR : min	13,3°C
SP01	17,2°C

12.2.2005

18:55:18



comments:

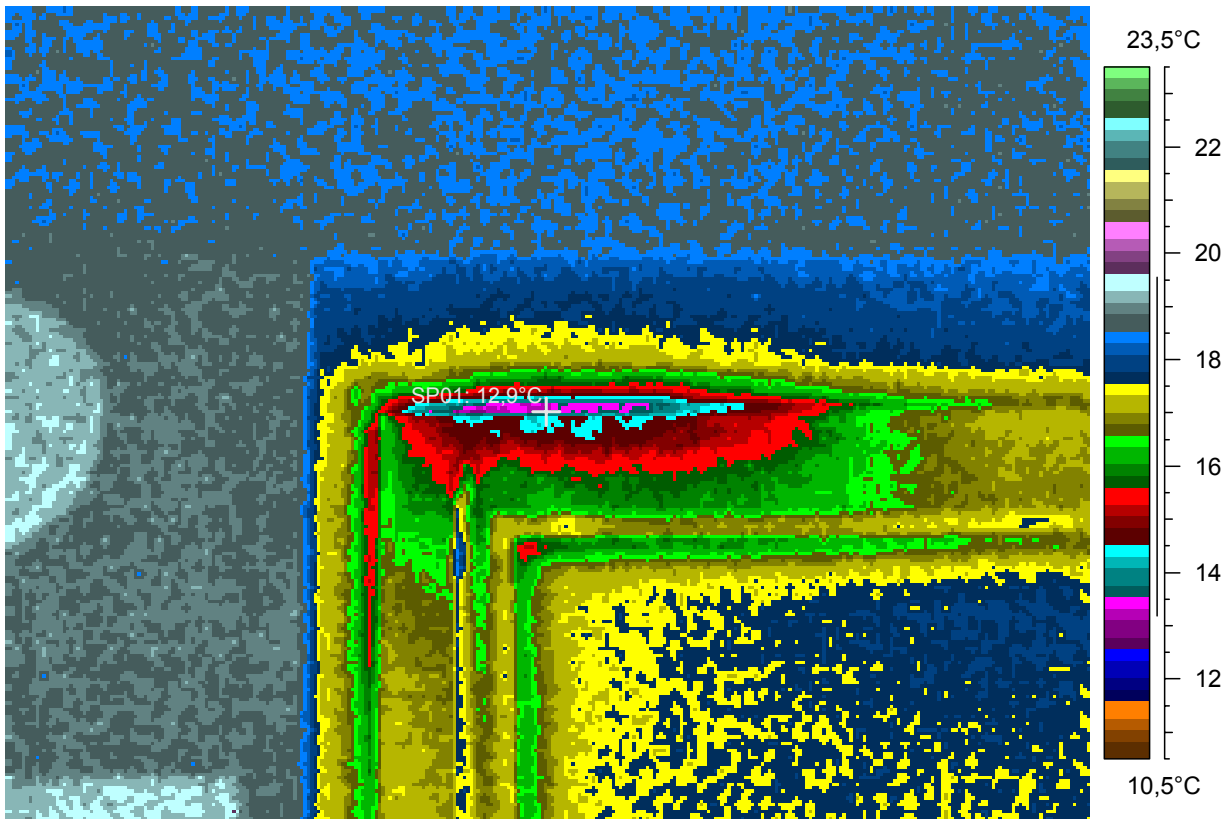
blabla

17 - Ir_1583.jpg

Label	Value
IR : max	19,9°C
IR : min	12,9°C
SP01	12,9°C

12.2.2005

18:57:26



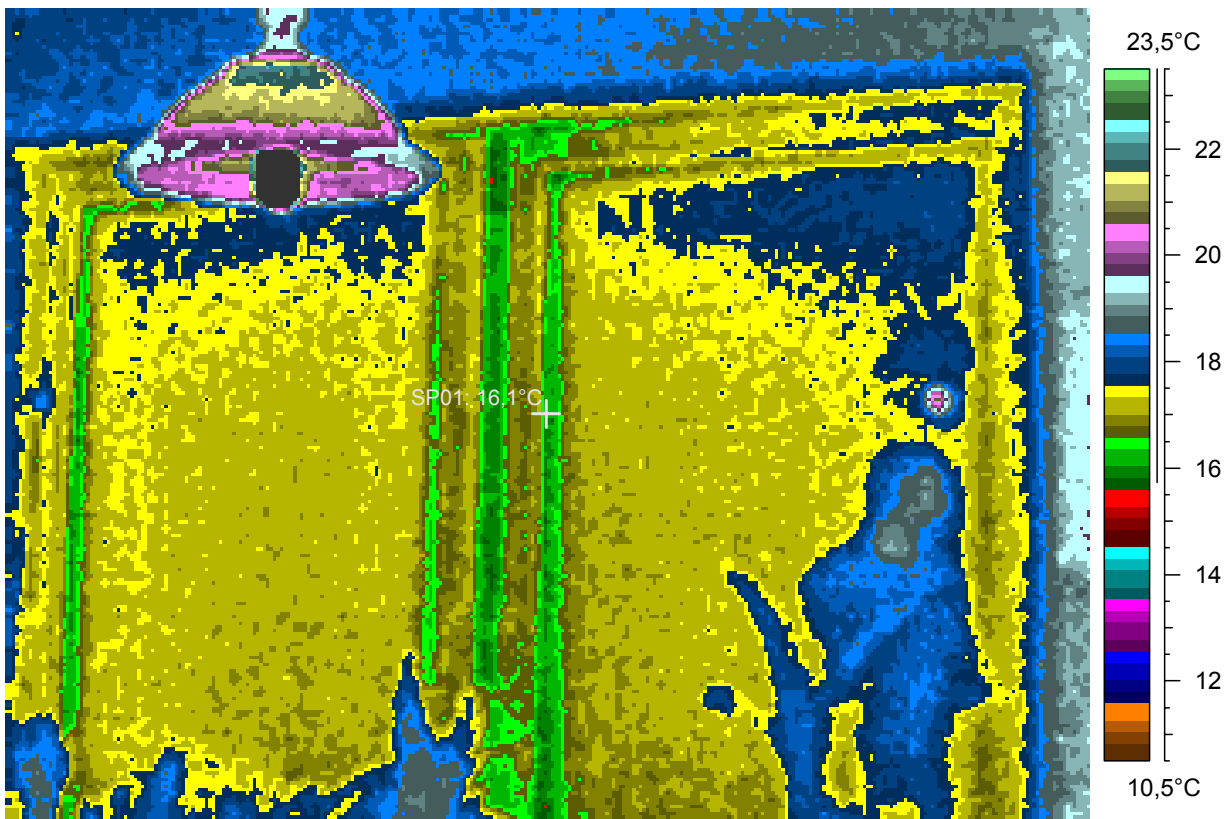
Window panes are just 2 K colder than walls (and 3 K then the air).

18 - Ir_1584.jpg

Label	Value
IR : max	62,2°C
IR : min	15,5°C
SP01	16,1°C

12.2.2005

18:58:06

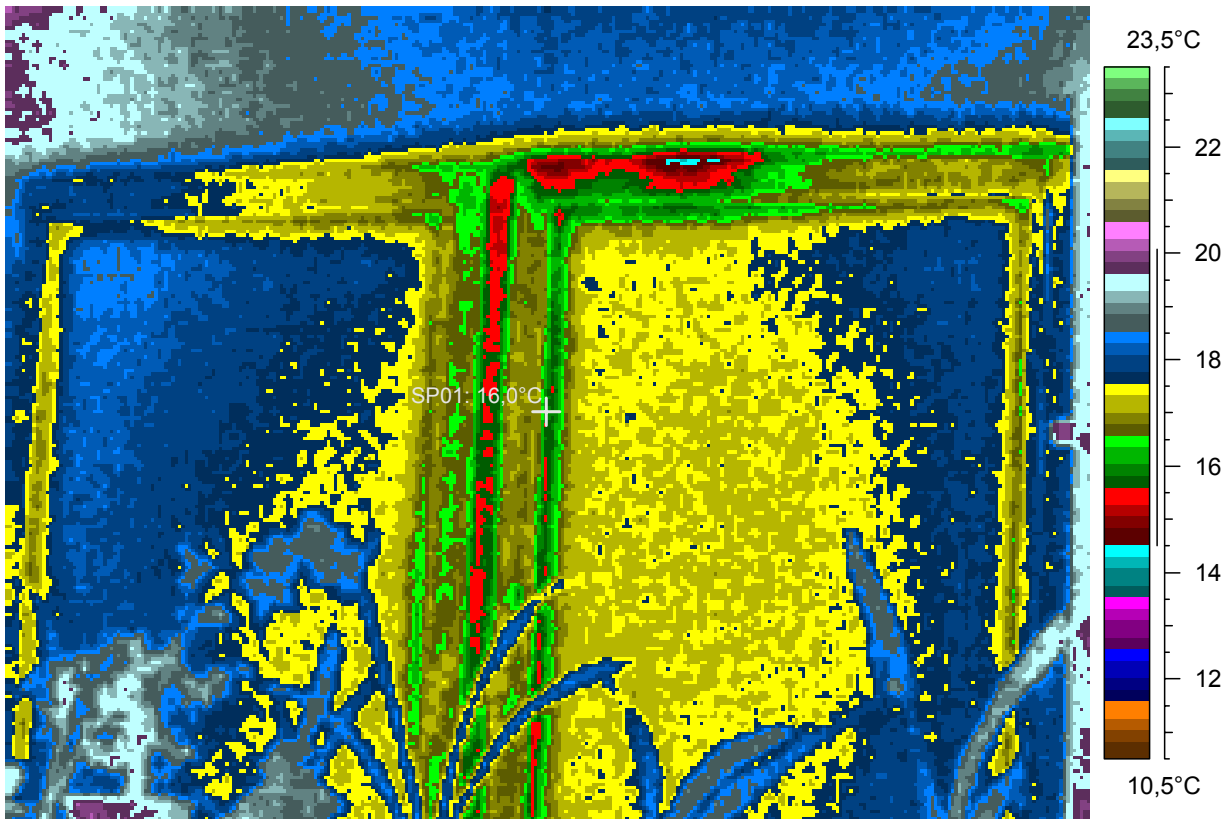


19 - Ir_1585.jpg

Label	Value
IR : max	20,3°C
IR : min	14,2°C
SP01	16,0°C

12.2.2005

18:59:22

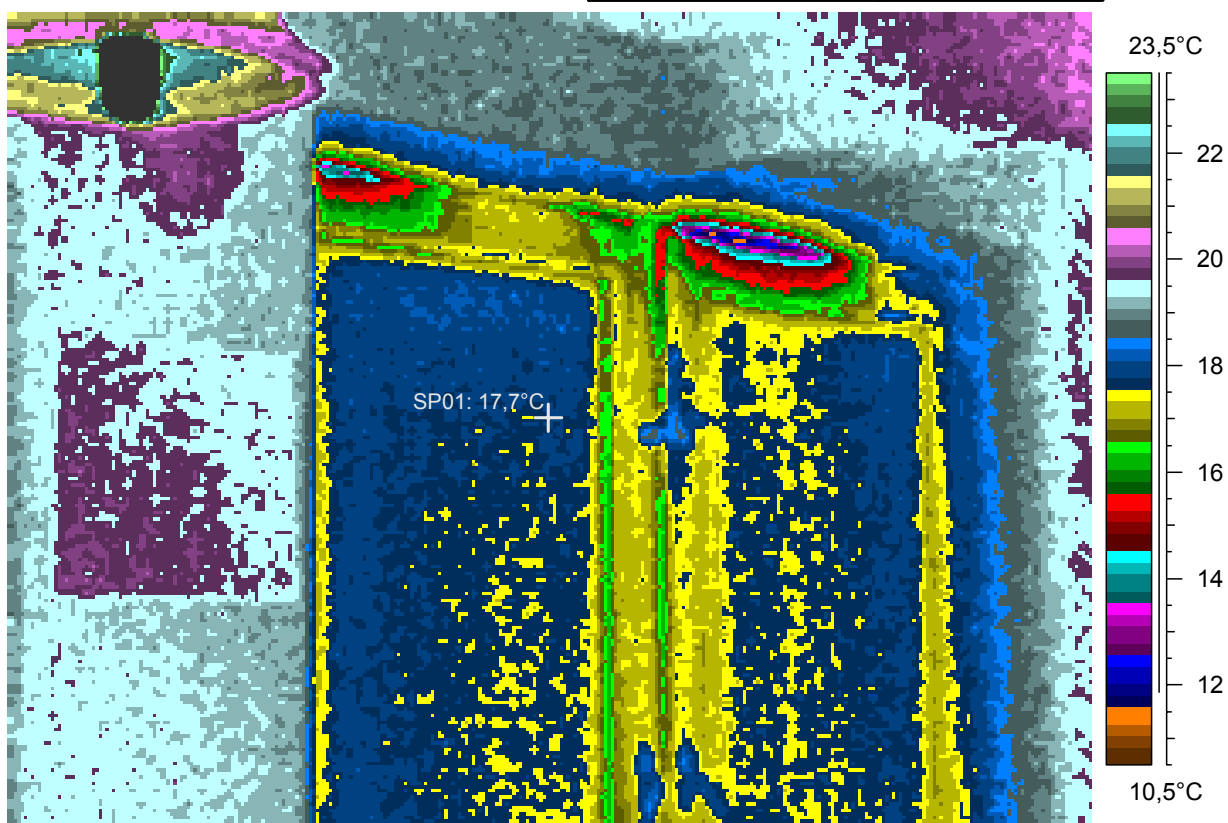


20 - Ir_1586.jpg

Label	Value
IR : max	67,0°C
IR : min	11,4°C
SP01	17,7°C

12.2.2005

19:00:57

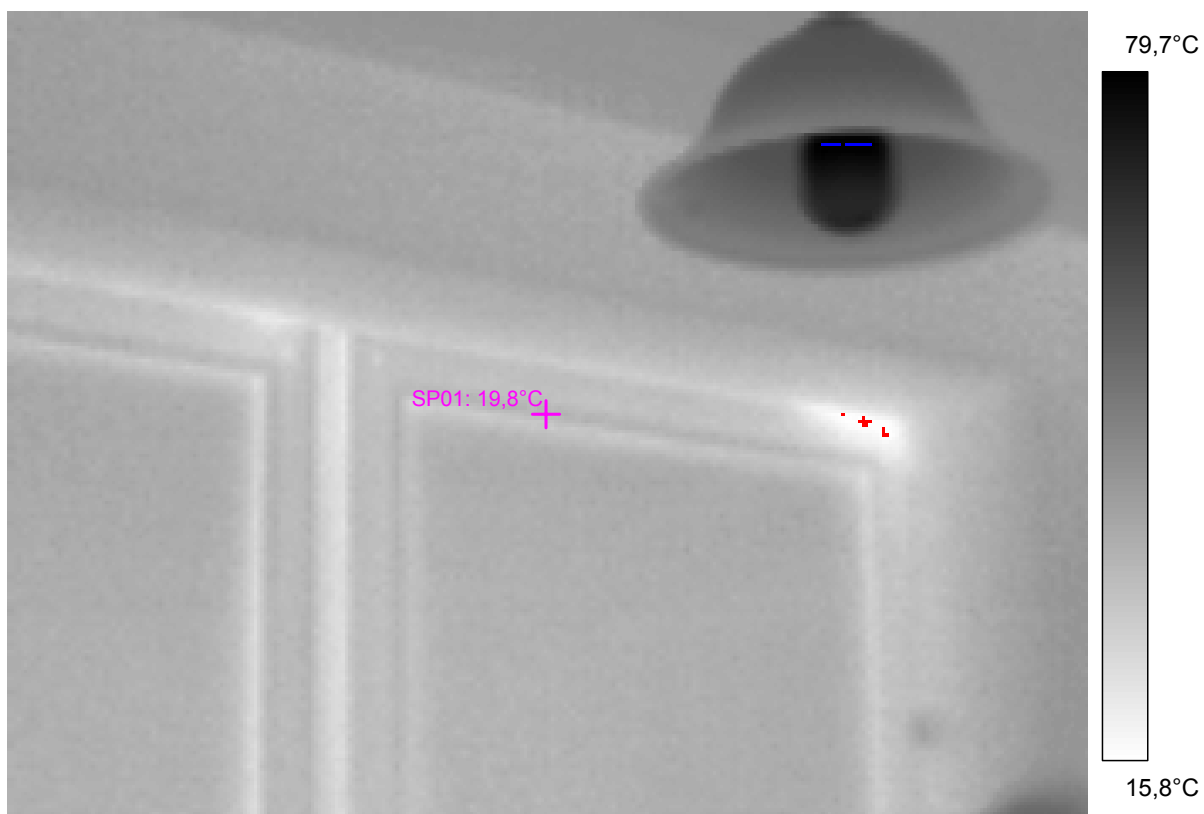
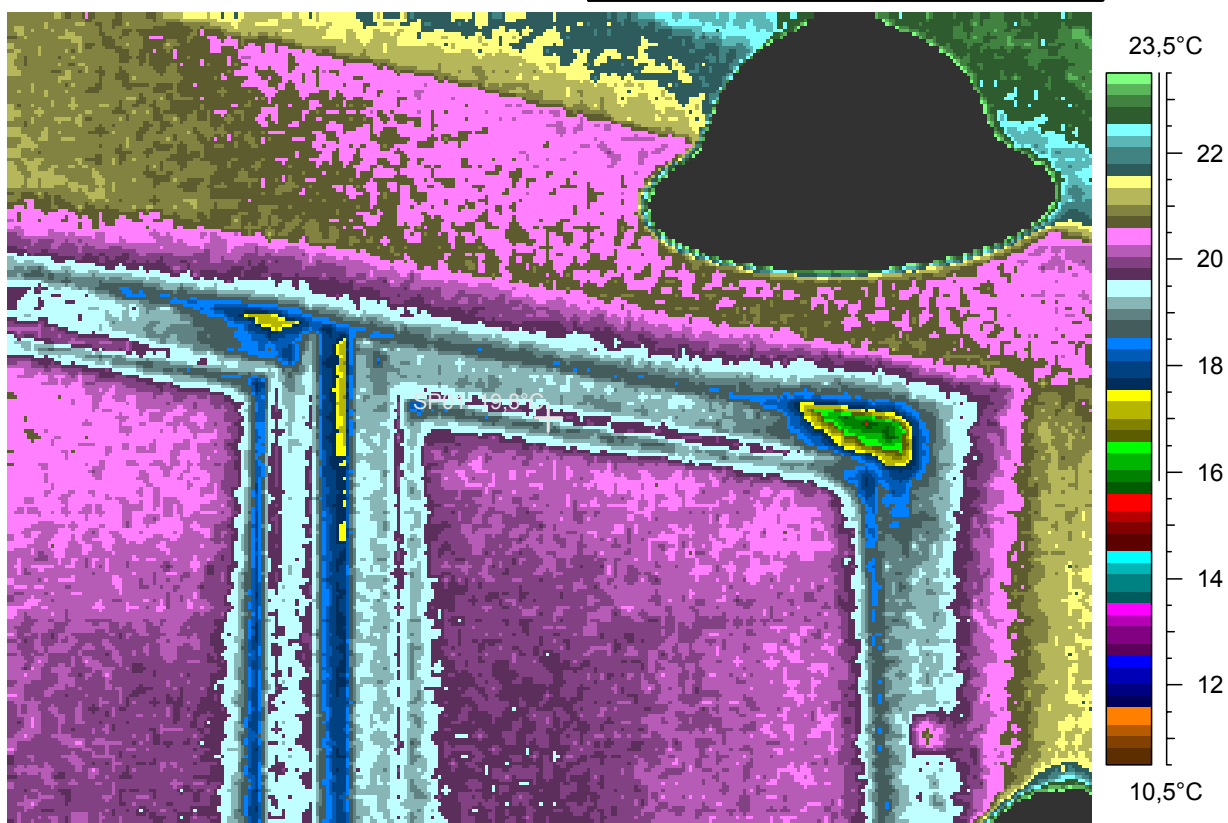


21 - Ir_1587.jpg

Label	Value
IR : max	80,2°C
IR : min	15,6°C
SP01	19,8°C

12.2.2005

19:03:03



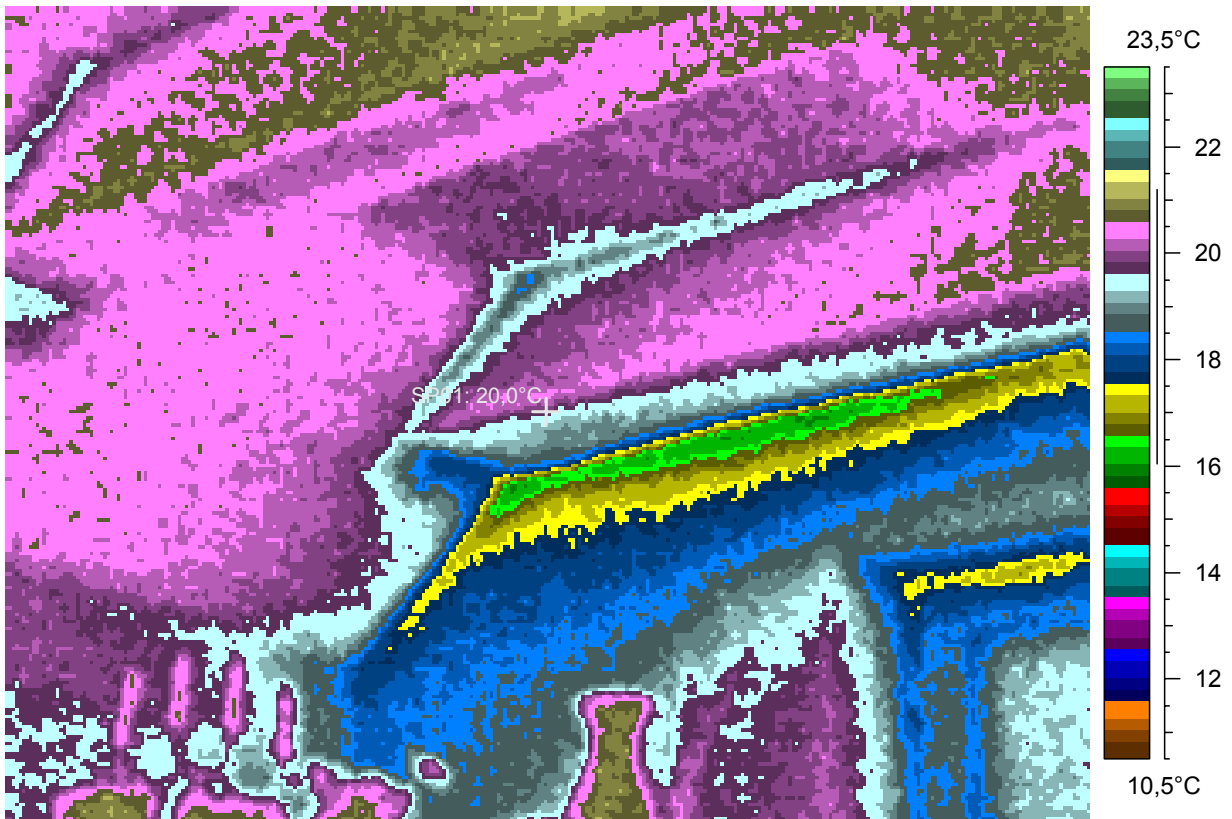
Heat bridges toward the roofspace, perhaps just geometric ones.

22 - Ir_1588.jpg

Label	Value
IR : max	21,3°C
IR : min	15,9°C
SP01	20,0°C

12.2.2005

19:05:46



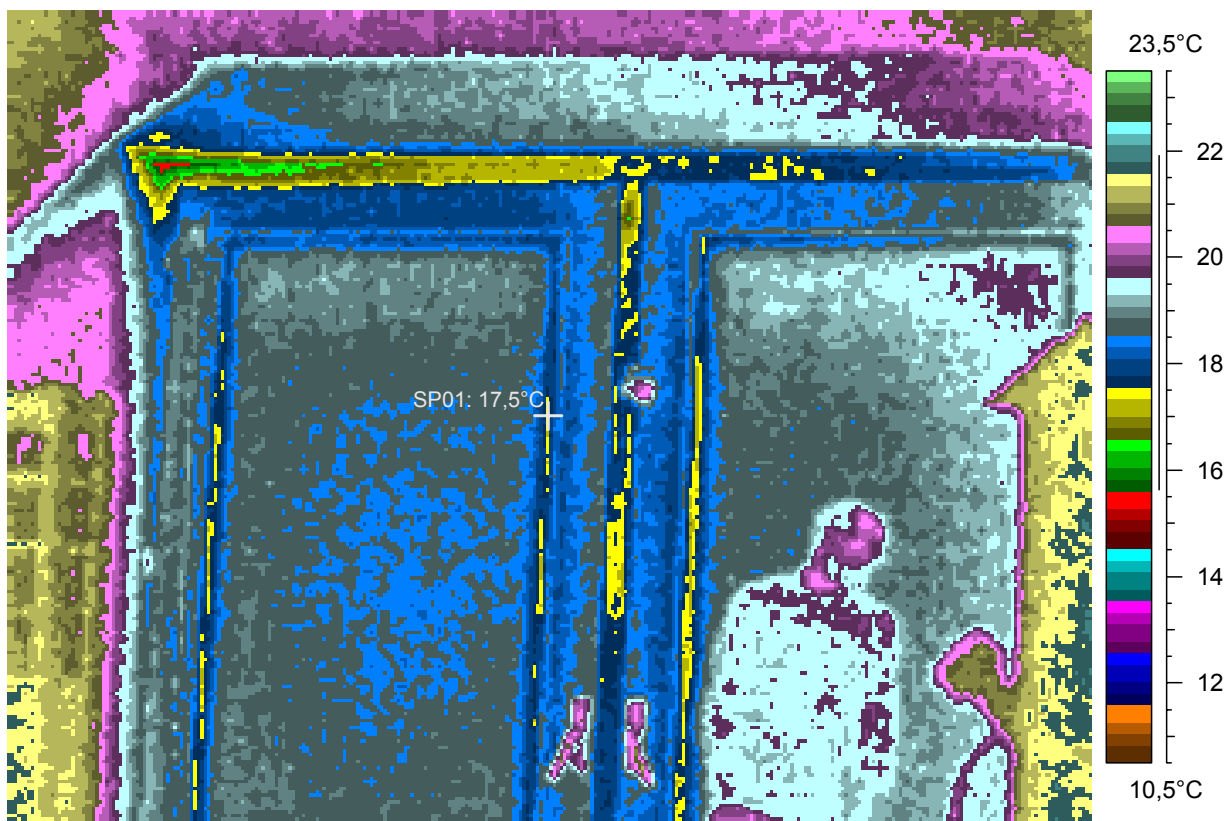
A slight draft at the upper left window corner. Pane is 3 K colder than the air.

23 - Ir_1591.jpg

Label	Value
IR : max	22,1°C
IR : min	15,3°C
SP01	17,5°C

12.2.2005

19:10:22



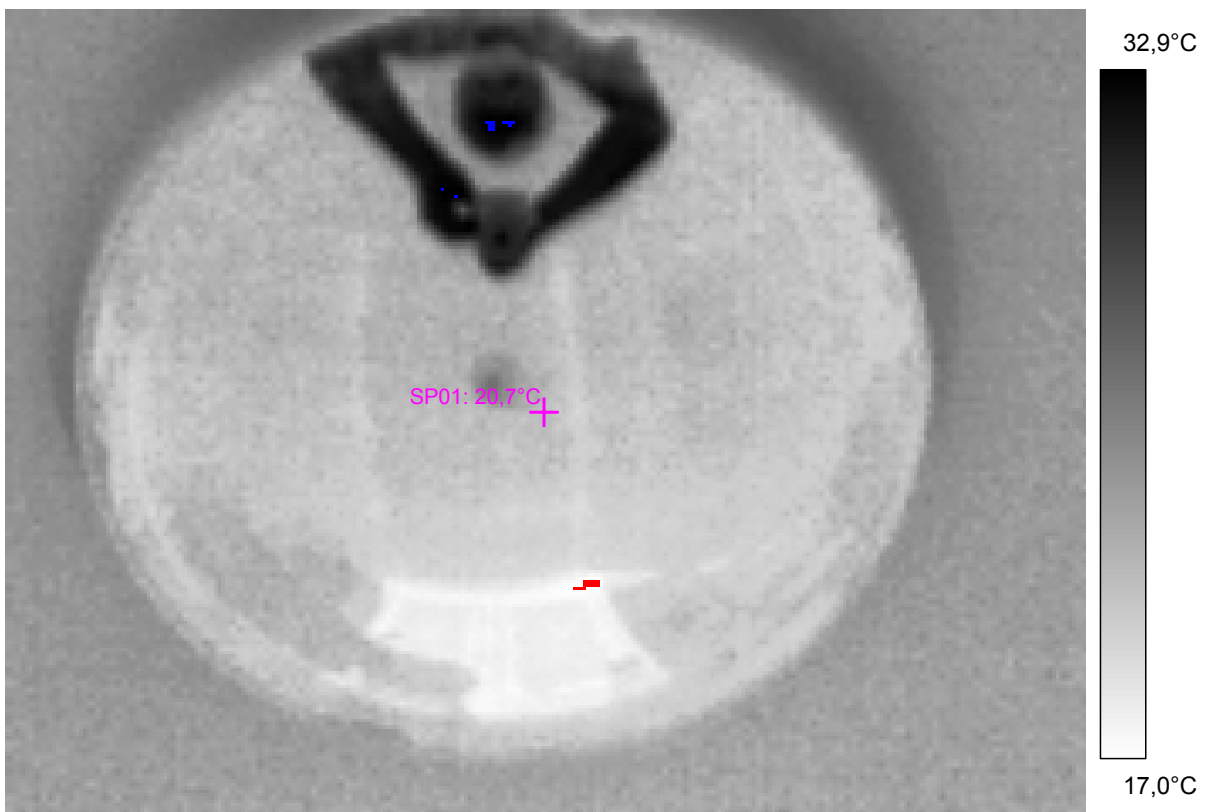
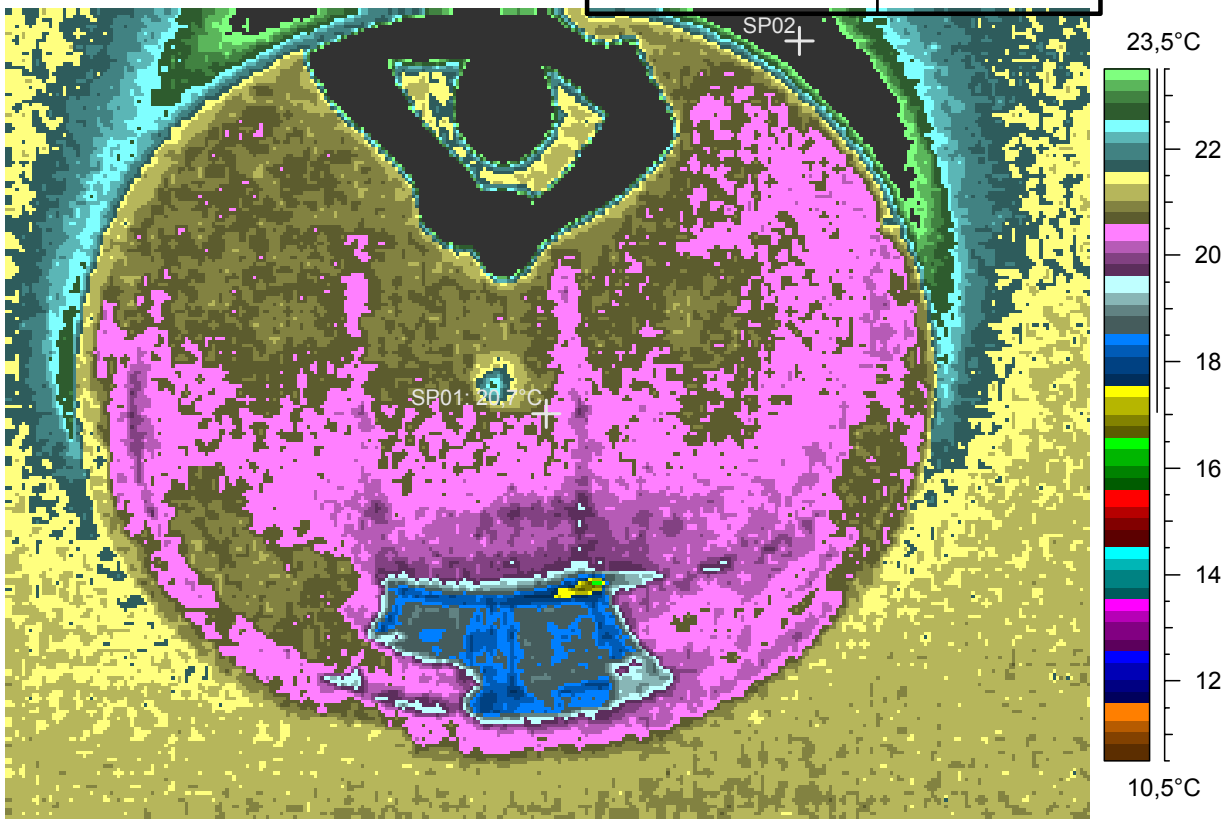
Condensor image of some ceiling.

24 - Ir_1592.jpg

Label	Value
IR : max	33,3°C
IR : min	16,4°C
SP01	20,7°C
SP02	24,8°C

12.2.2005

19:14:13

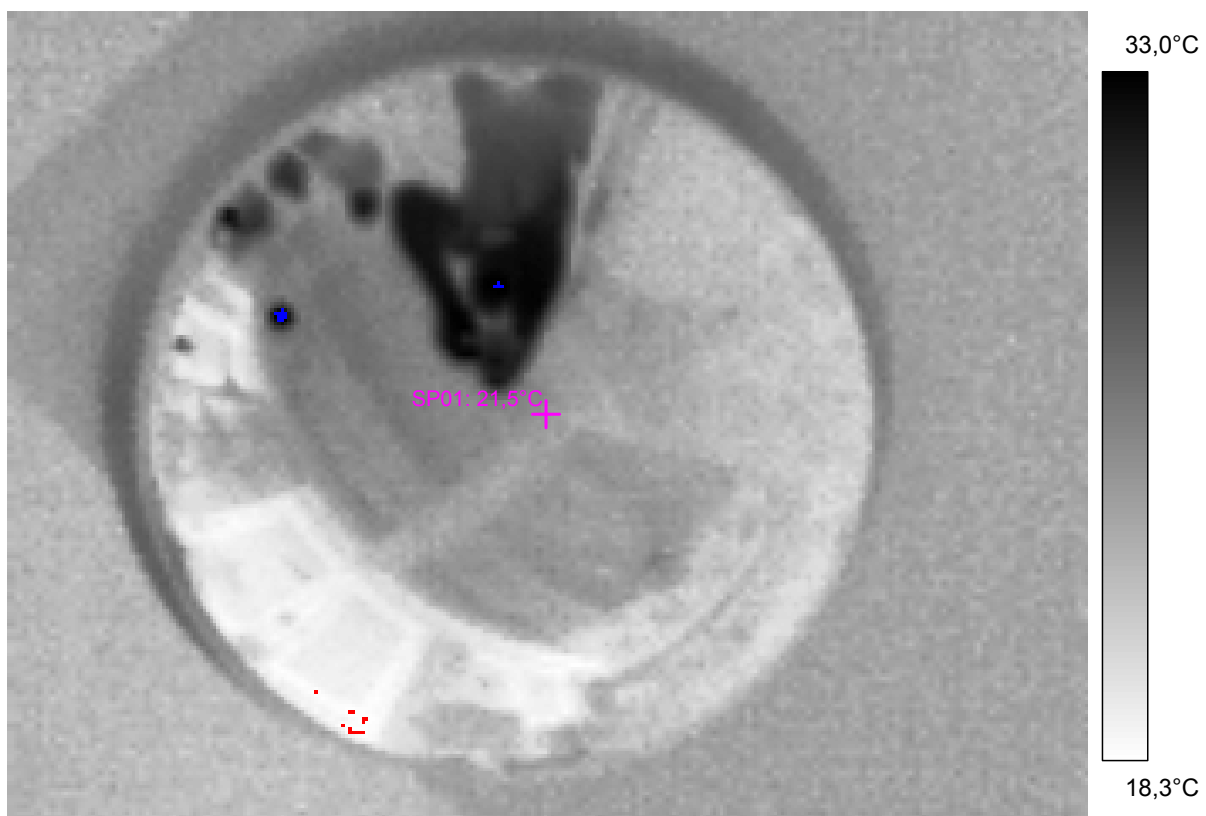
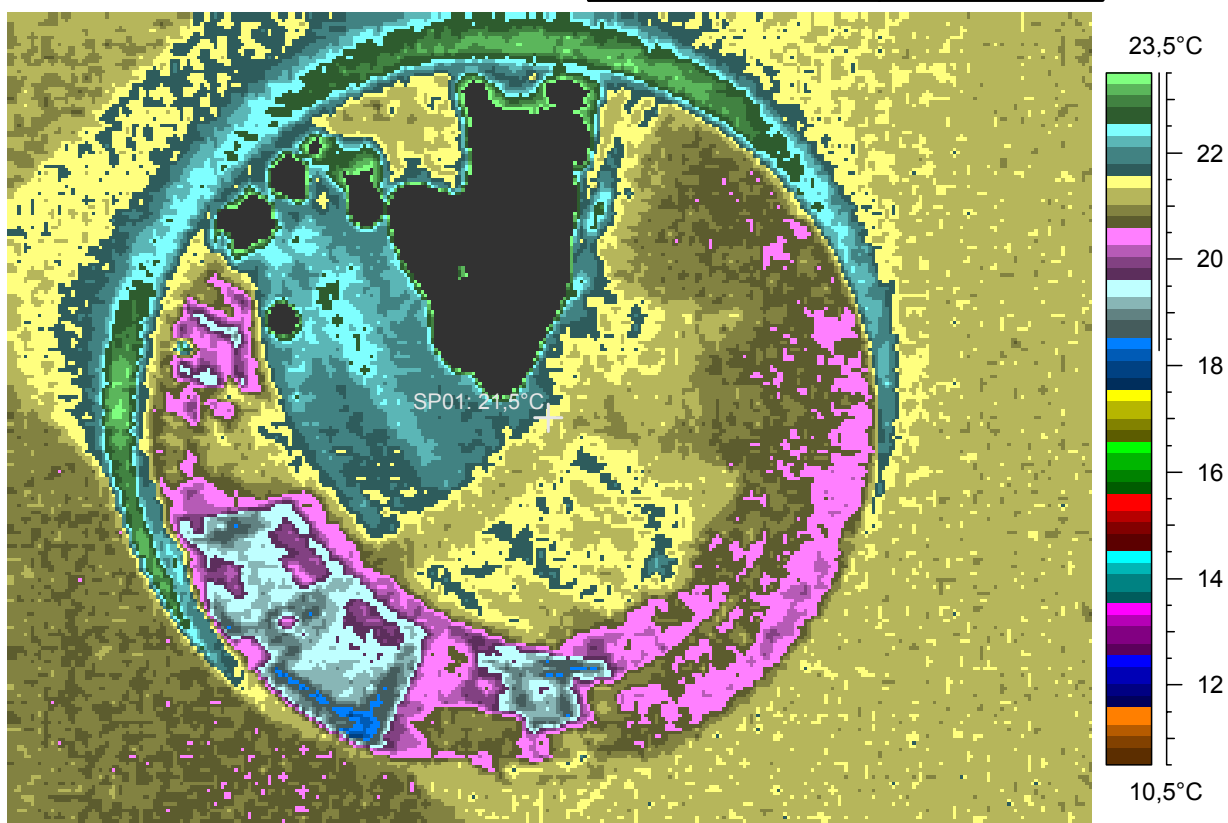


25 - Ir_1593.jpg

Label	Value
IR : max	39,1°C
IR : min	18,0°C
SP01	21,5°C

12.2.2005

19:17:27



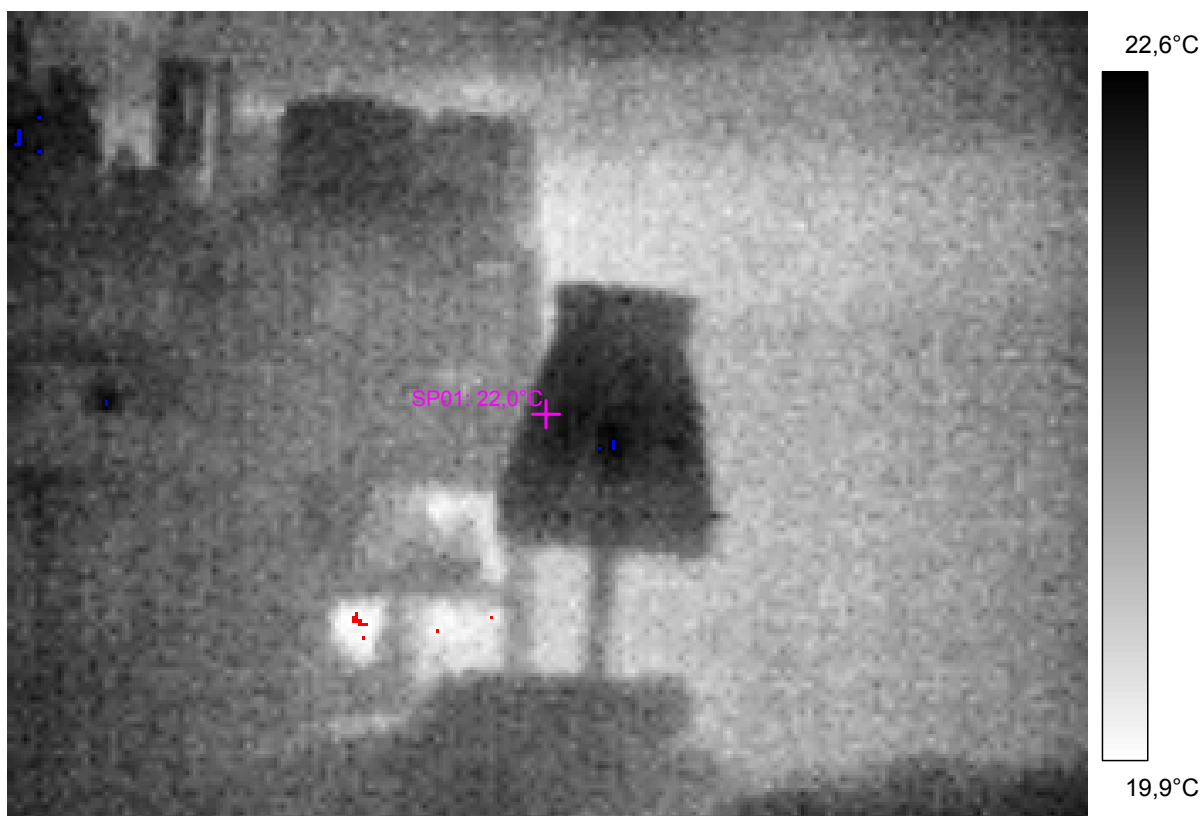
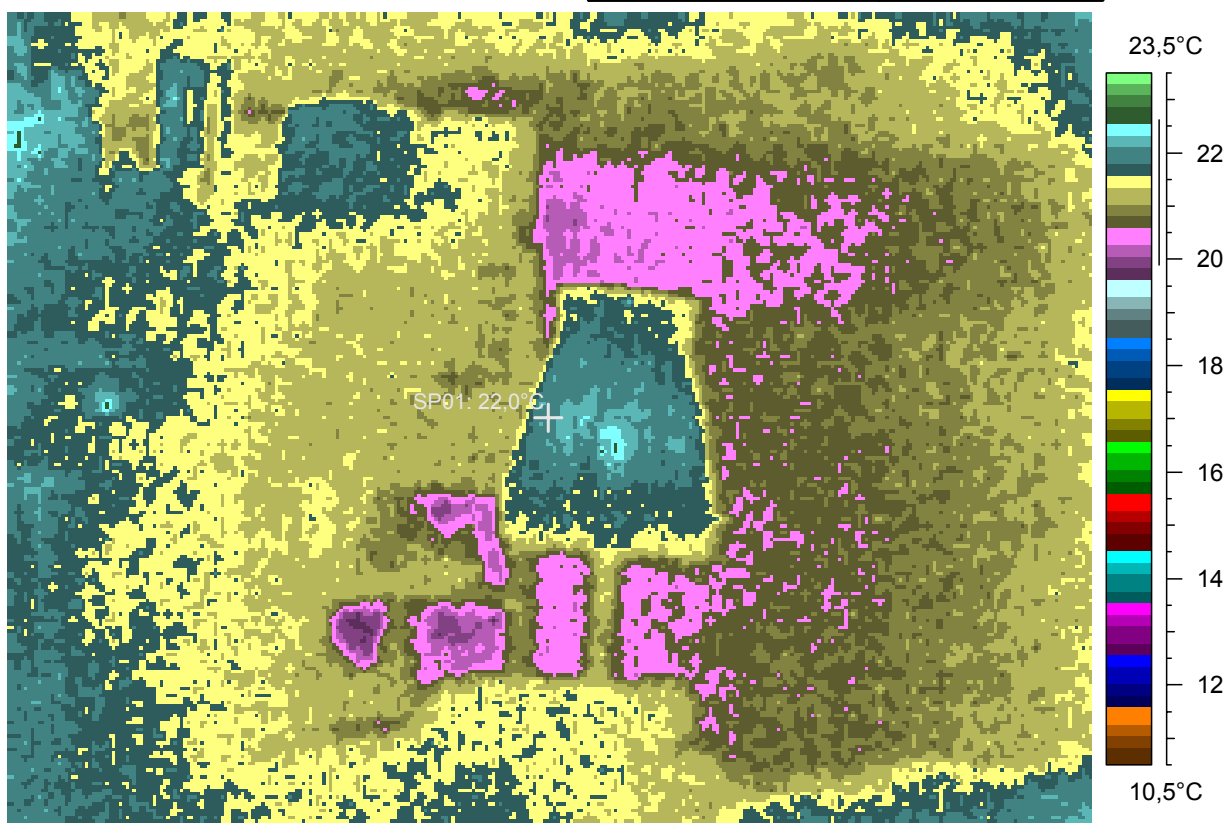
An outer wall and a library. The difference of almost a kelvin may be due to thermal inertia and stronger evening heating.

26 - Ir_1595.jpg

Label	Value
IR : max	22,7°C
IR : min	19,8°C
SP01	22,0°C

12.2.2005

19:25:25



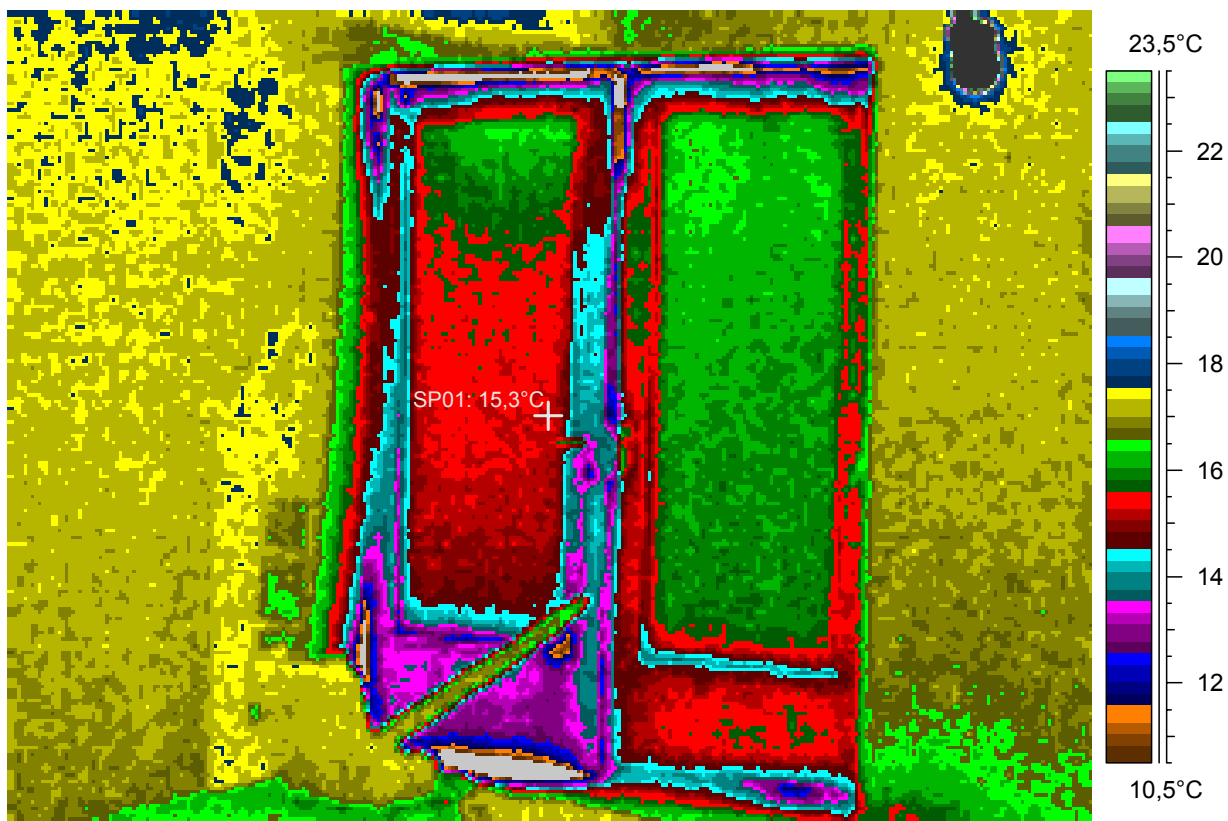
Eastern door, second floor.

27 - Ir_1596.jpg

Label	Value
IR : max	137,5°C
IR : min	6,8°C
SP01	15,3°C

12.2.2005

19:31:04



comments:

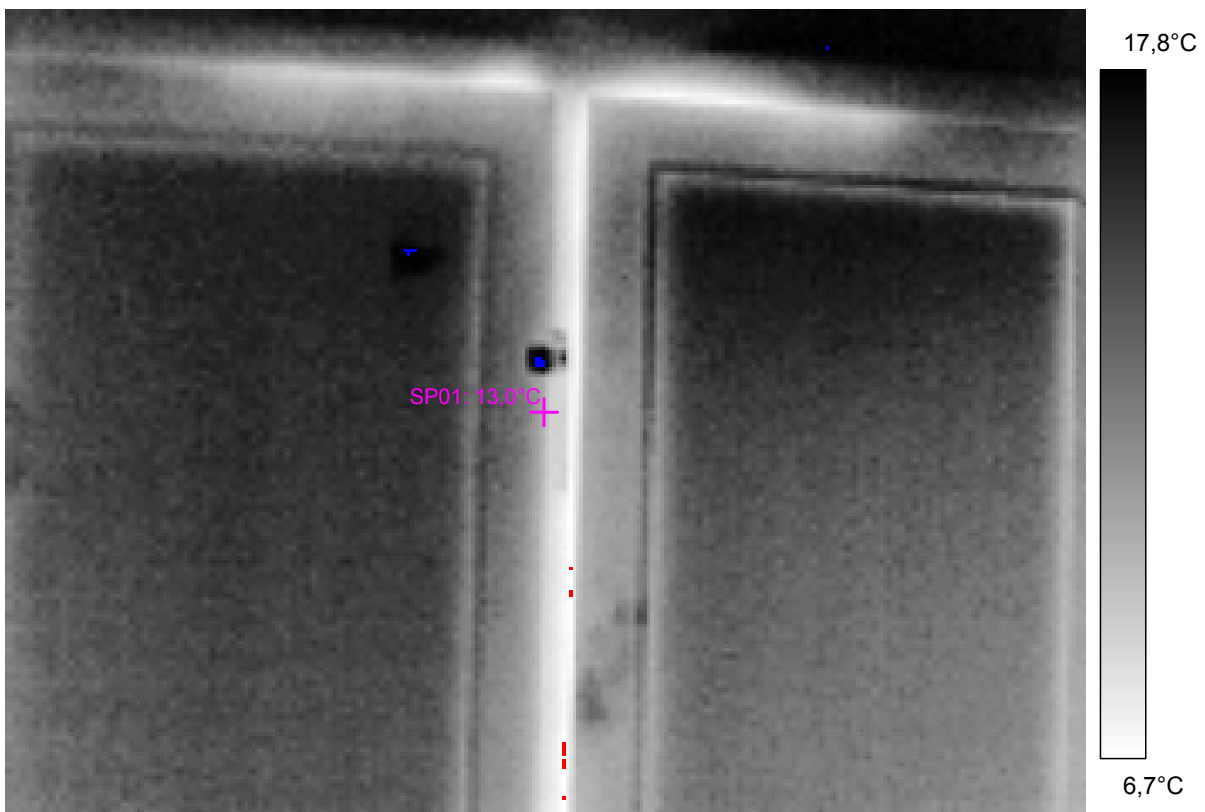
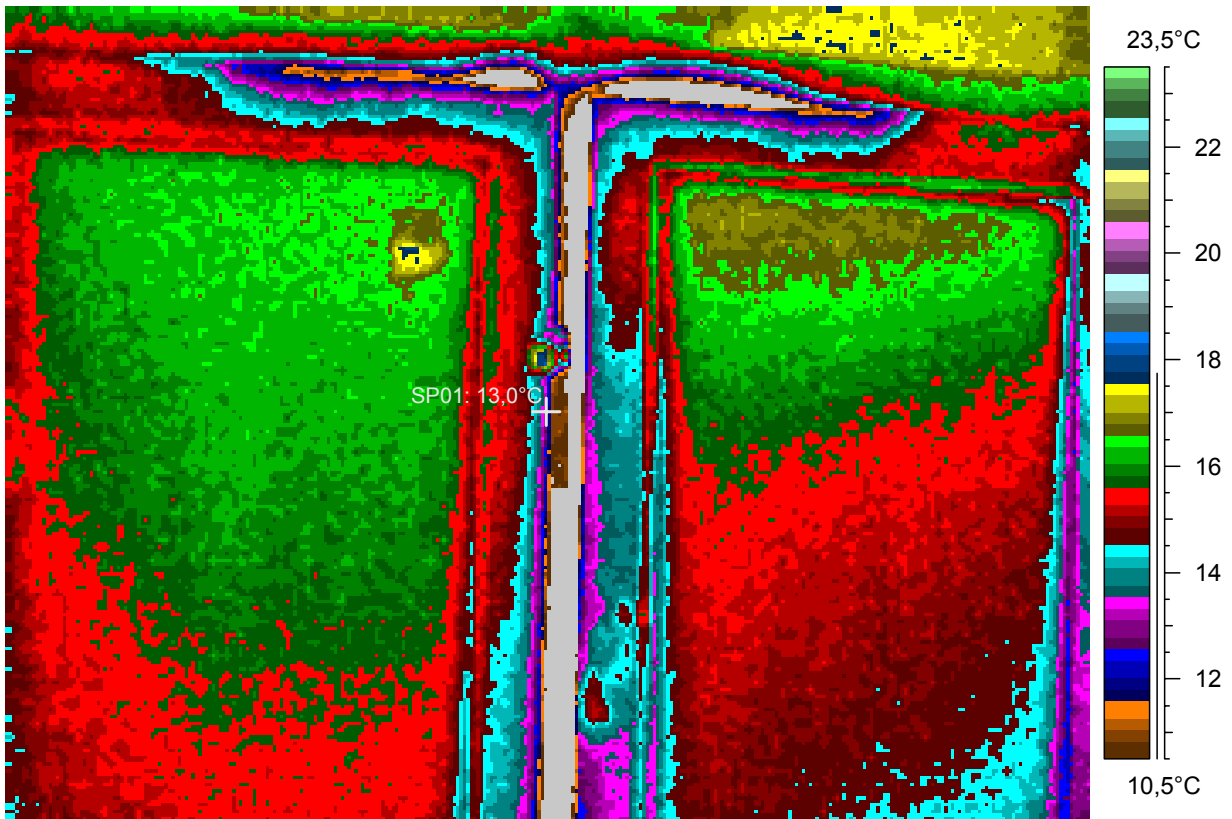
blabla

28 - Ir_1597.jpg

Label	Value
IR : max	18,2°C
IR : min	6,5°C
SP01	13,0°C

12.2.2005

19:33:40

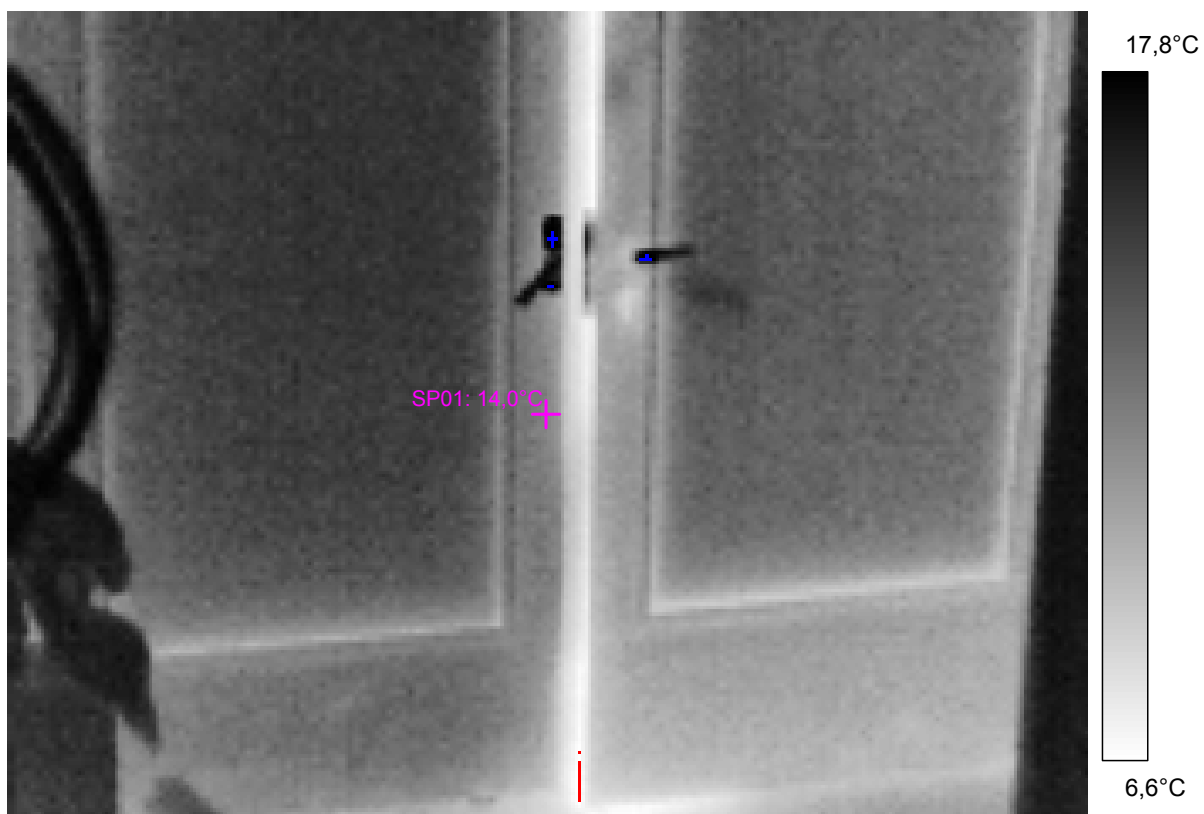
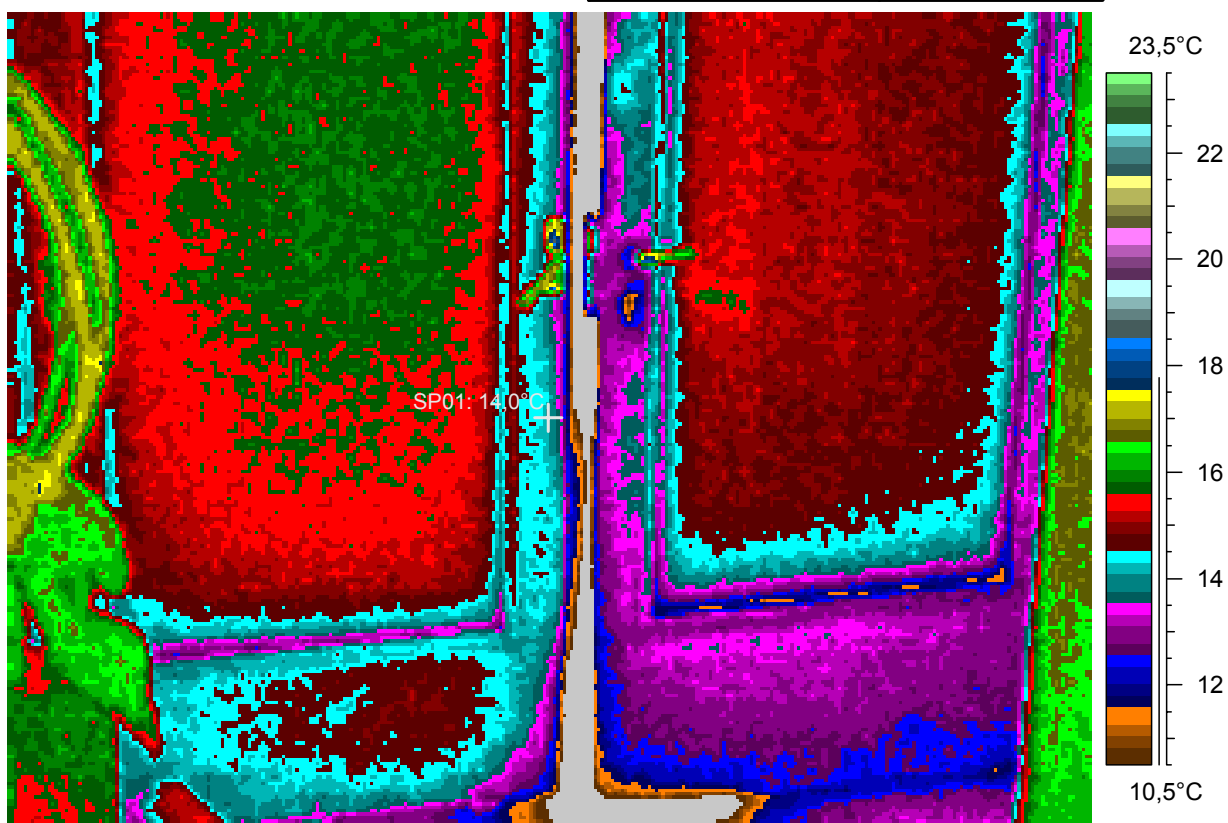


29 - Ir_1598.jpg

Label	Value
IR : max	18,8°C
IR : min	6,1°C
SP01	14,0°C

12.2.2005

19:34:15



30 - Ir_1599.jpg

Label	Value
IR : max	24,1°C
IR : min	7,6°C
SP01	13,5°C

12.2.2005

19:35:46

