

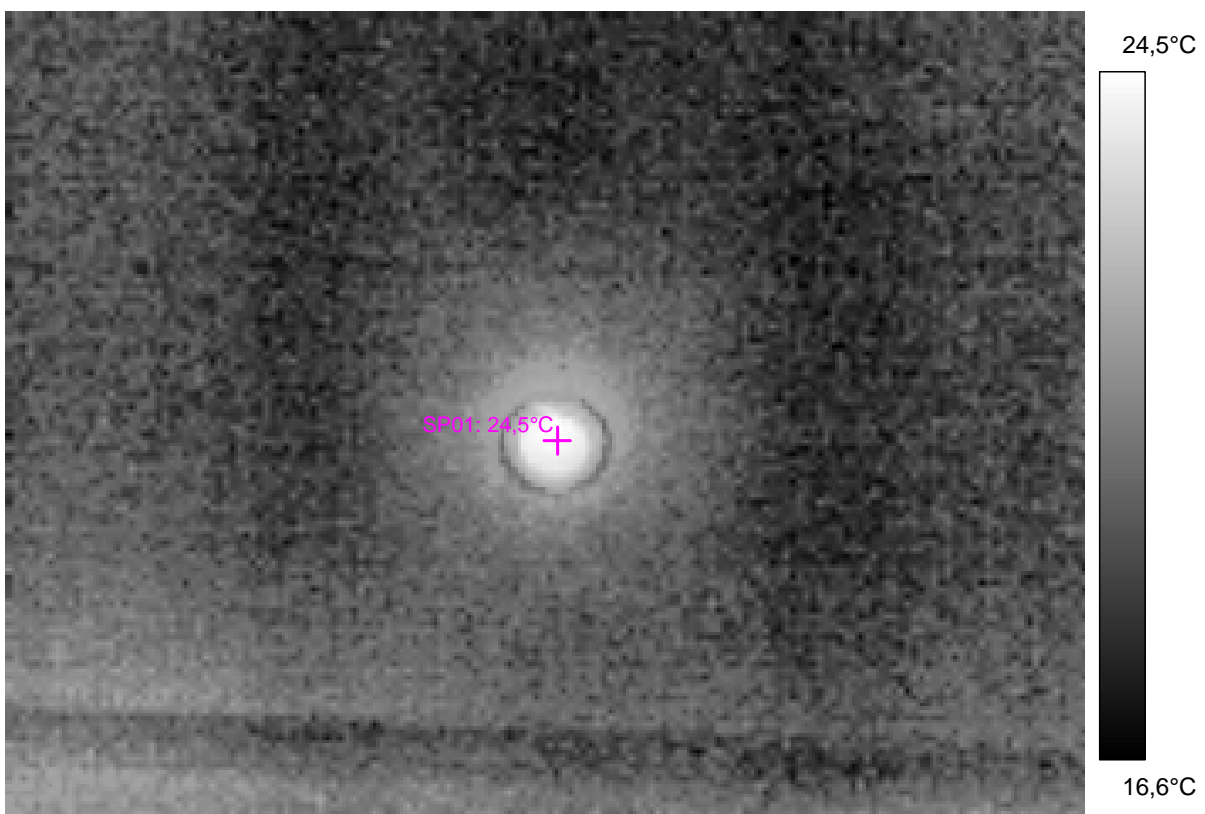
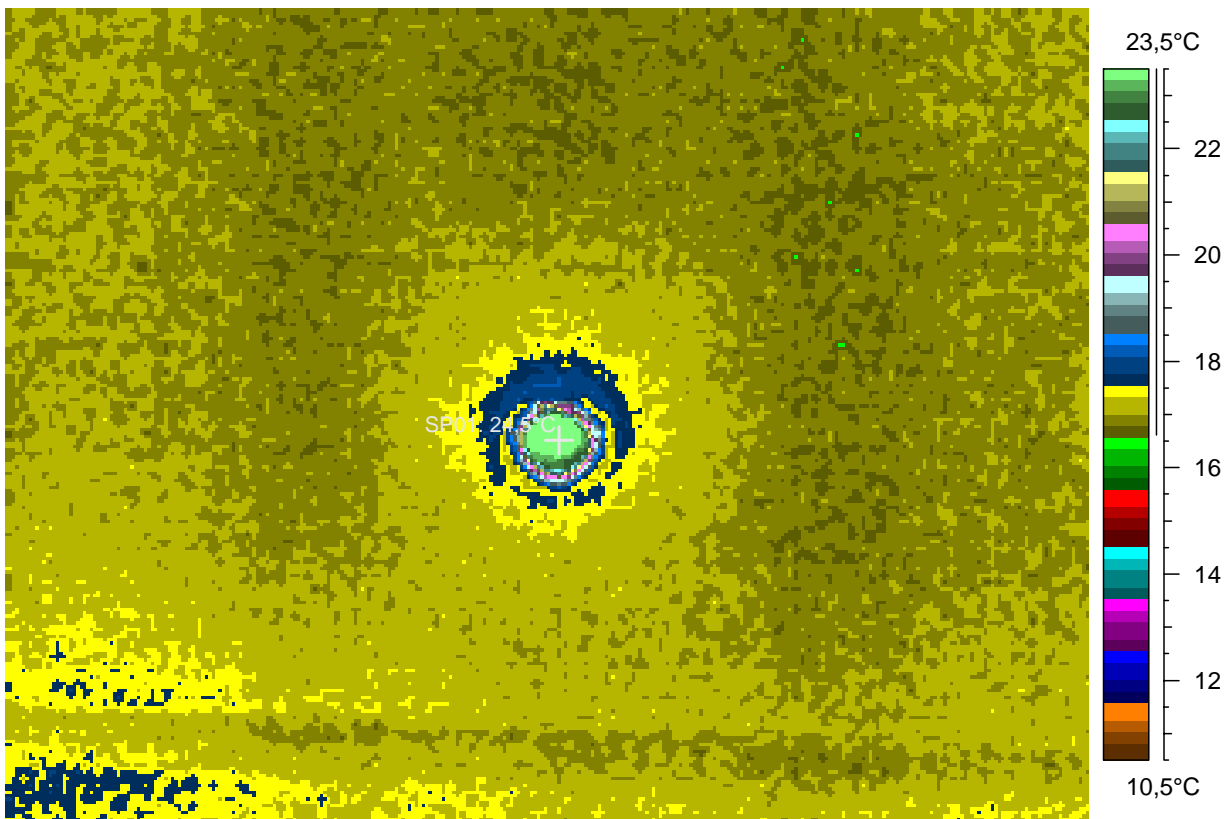
LED light detail, above the corridor floor

1 - Ir\_1488.jpg

Label	Value
IR : max	24,8°C
IR : min	16,5°C
SP01	24,5°C

4.1.2008

2:16:43



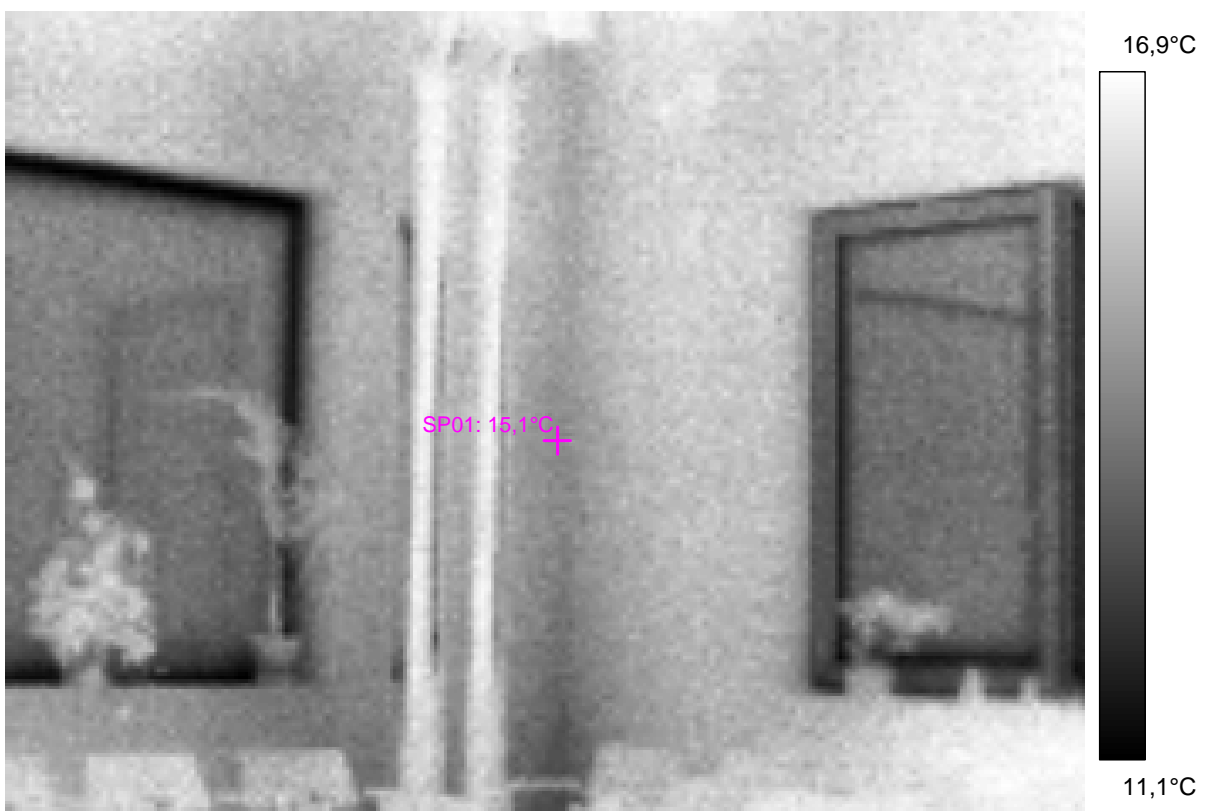
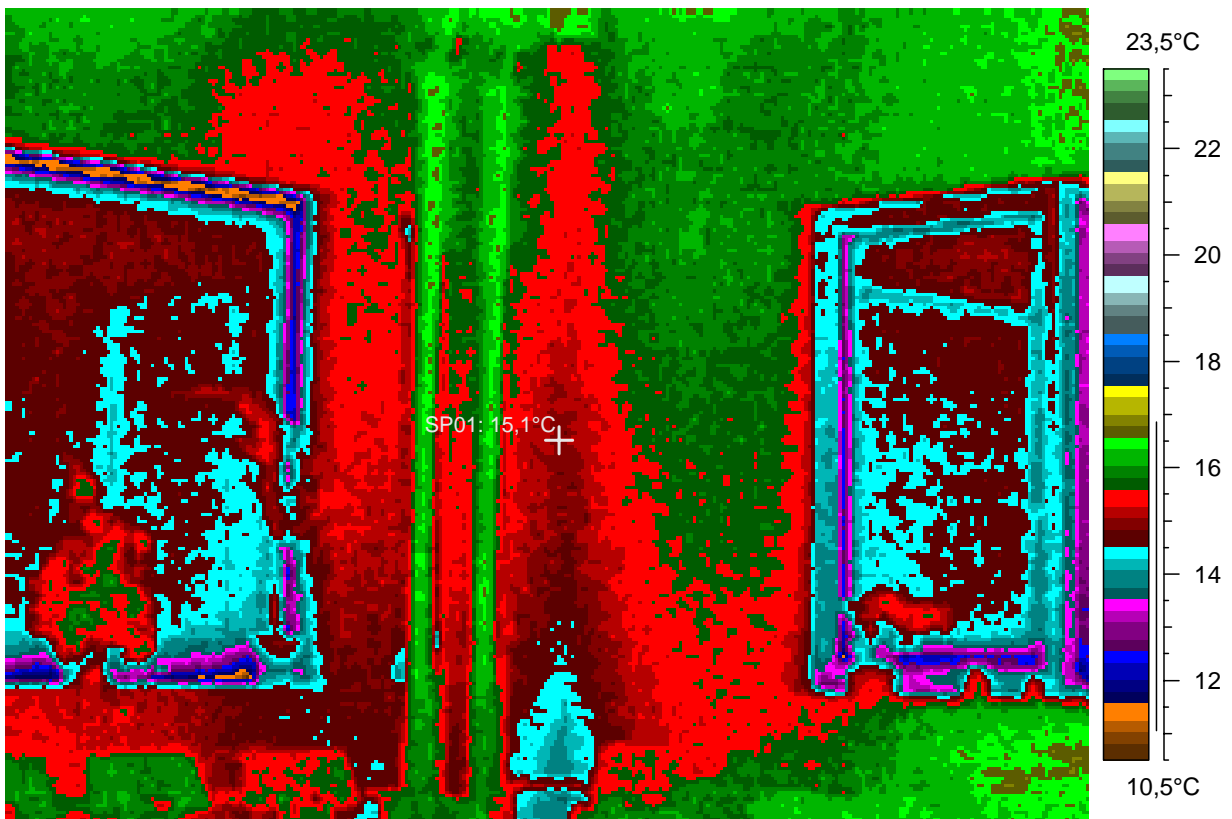
SW corner of lecture hall, with circulation tubes.  
Large fixed glazing at left, Internorm window at right

## 2 - Ir\_1489.jpg

Label	Value
IR : max	17,0°C
IR : min	10,8°C
SP01	15,1°C

4.1.2008

2:17:41



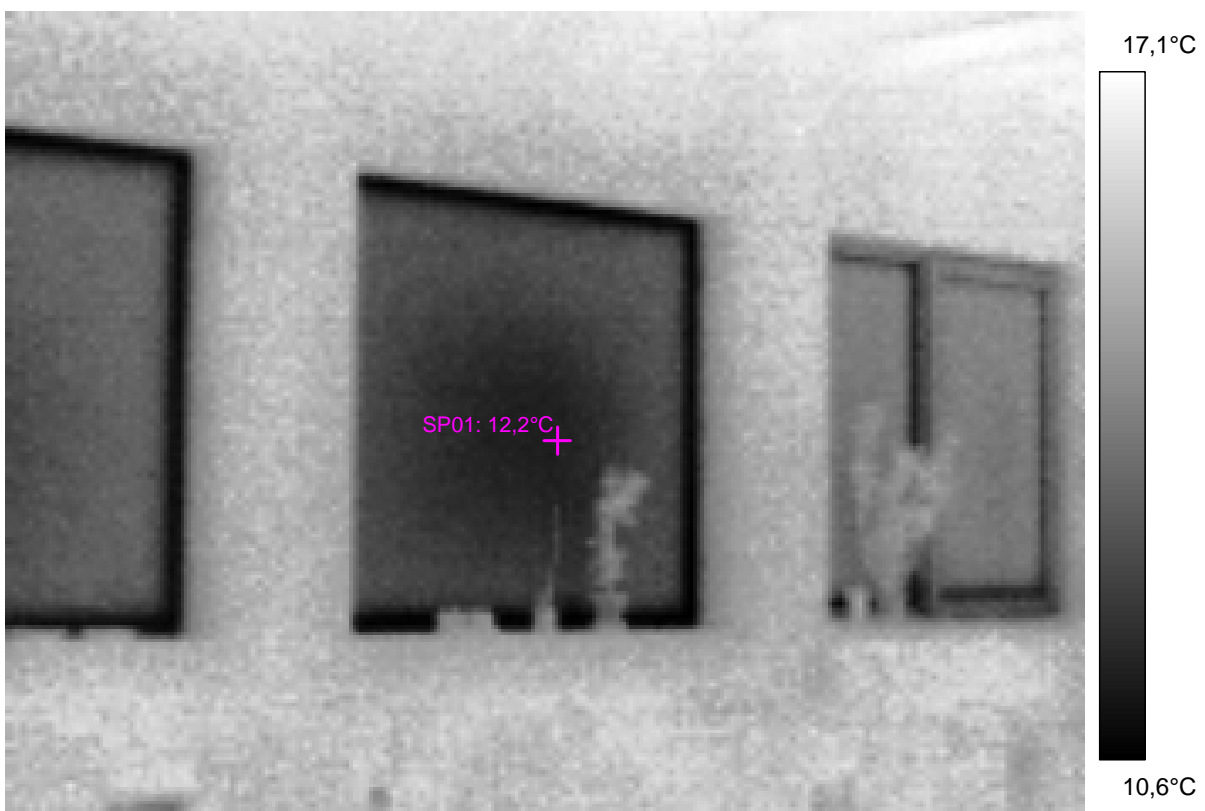
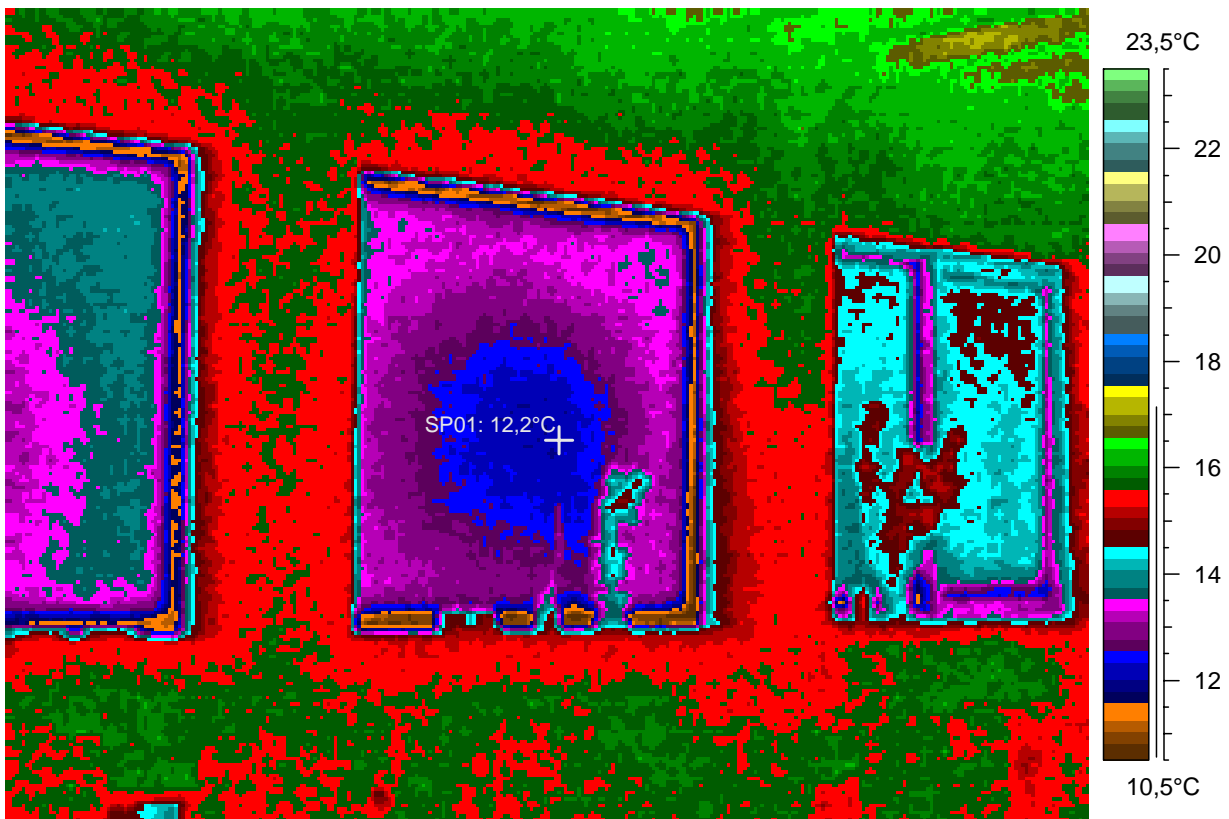
W wall of lecture hall, u 0.8 fixed glazings left, Internorm at right

### 3 - Ir\_1490.jpg

Label	Value
IR : max	17,3°C
IR : min	10,3°C
SP01	12,2°C

4.1.2008

2:18:15



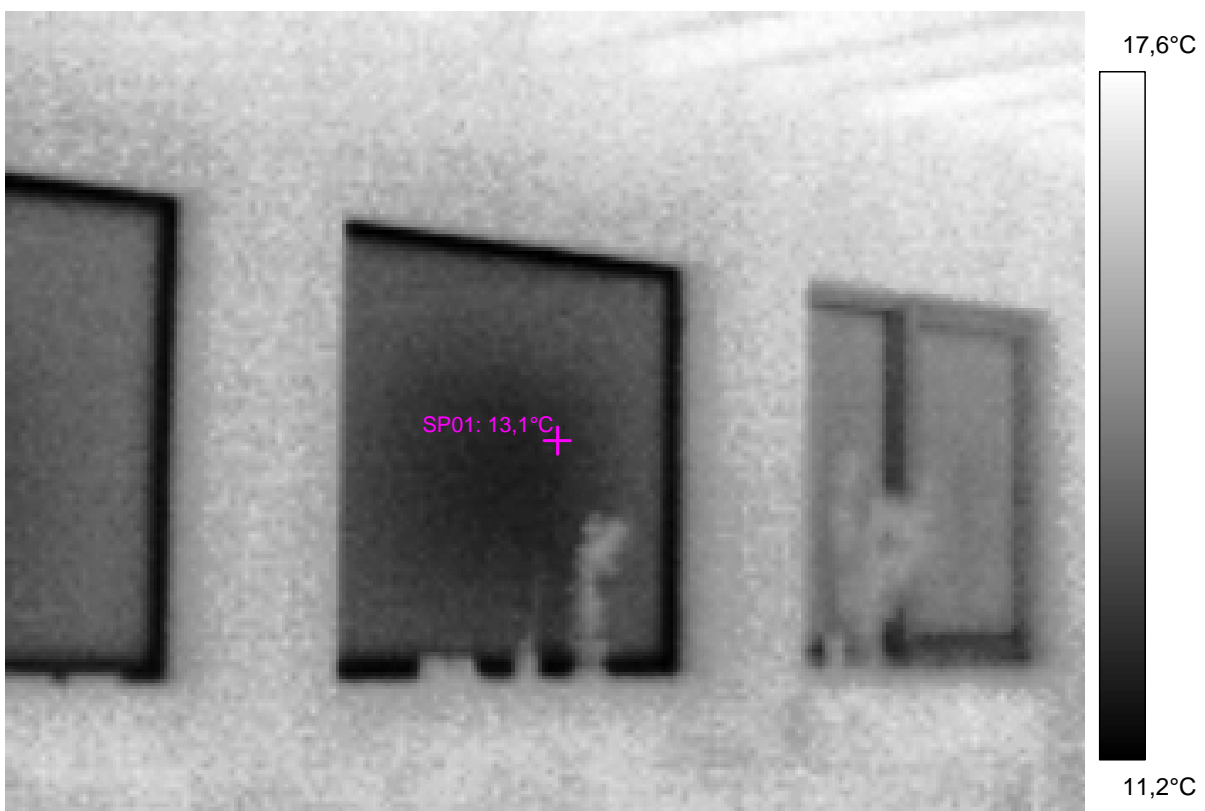
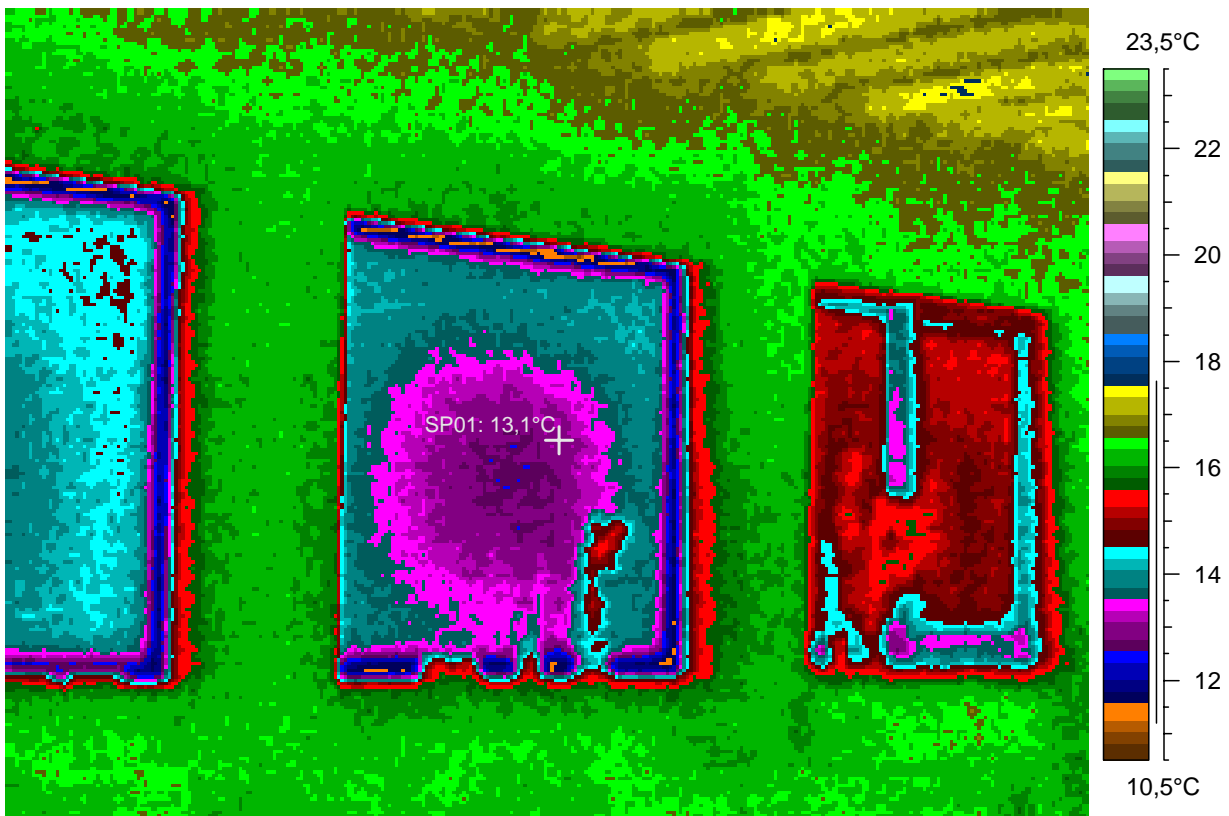
the same (W wall), probably after a darkframe, so the shown temperatures are closer to real luminance ones.

## 4 - Ir\_1491.jpg

Label	Value
IR : max	17,8°C
IR : min	11,0°C
SP01	13,1°C

4.1.2008

2:18:55



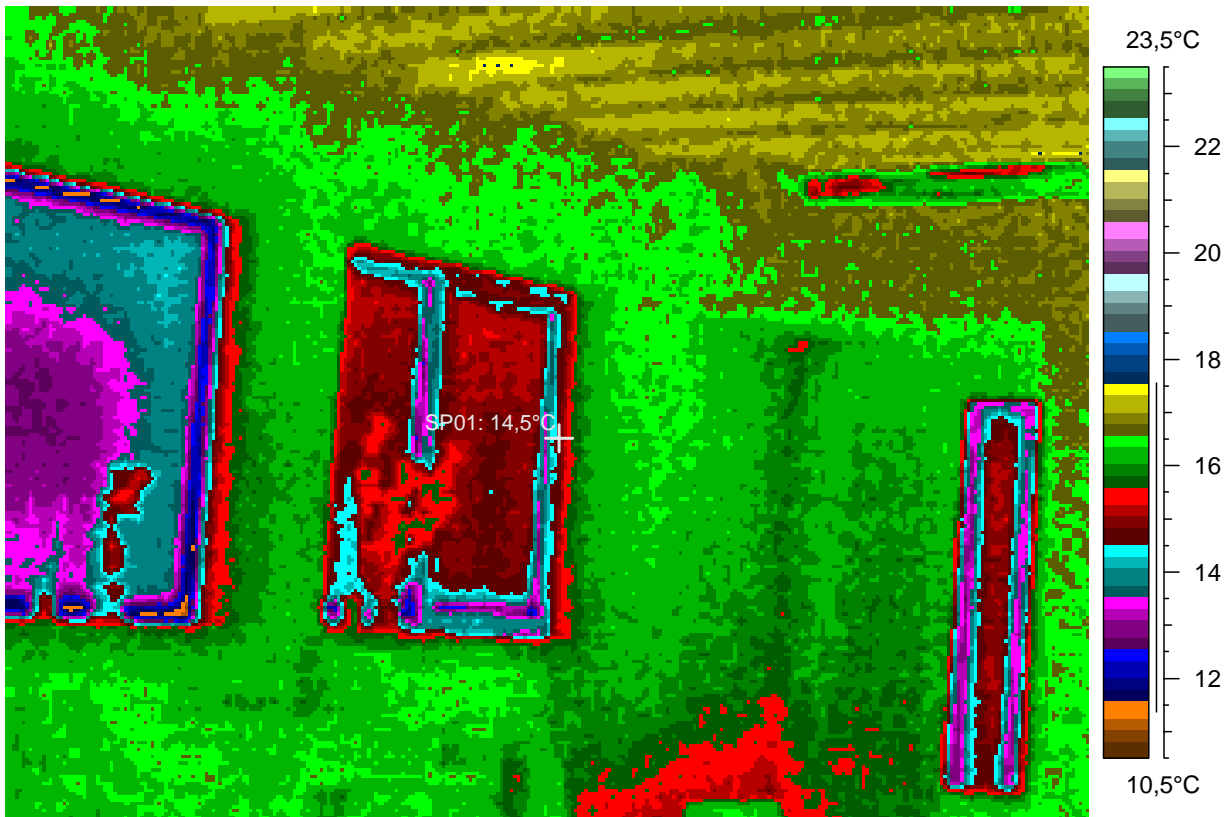
NW corner of the lecture hall, entrance door at right, foyer glazing to the buffer zone visible a bit. Fixed glass at left.

## 5 - Ir\_1492.jpg

Label	Value
IR : max	17,7°C
IR : min	11,0°C
SP01	14,5°C

4.1.2008

2:19:36



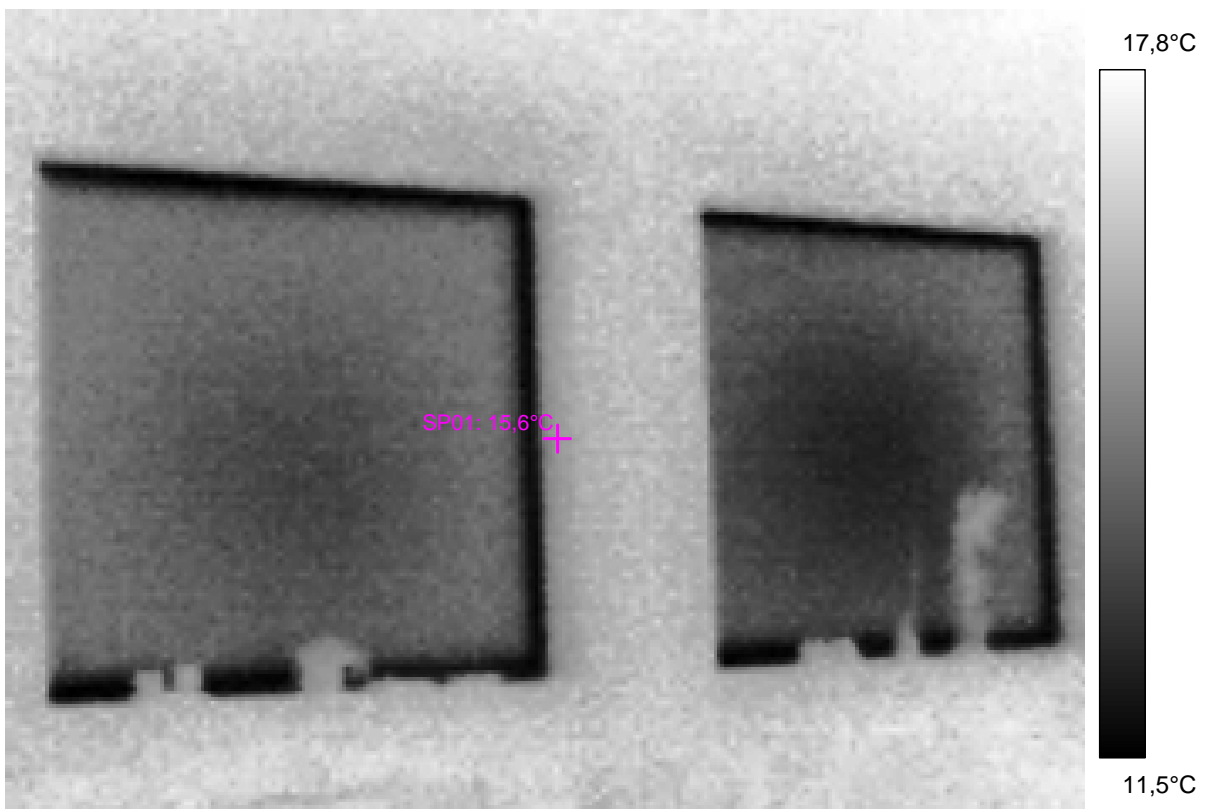
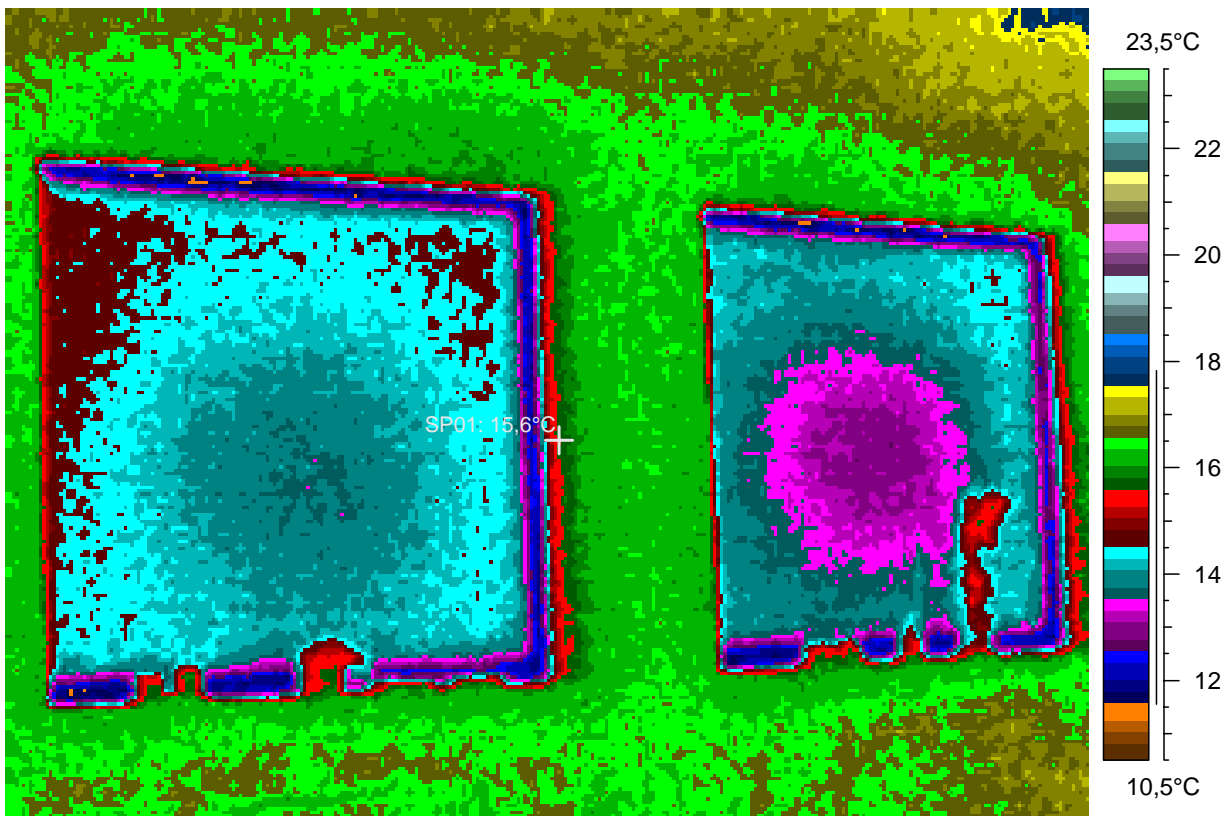
The two W fixed glazings in the lecture hall.

## 6 - Ir\_1493.jpg

Label	Value
IR : max	17,9°C
IR : min	11,3°C
SP01	15,6°C

4.1.2008

2:19:41



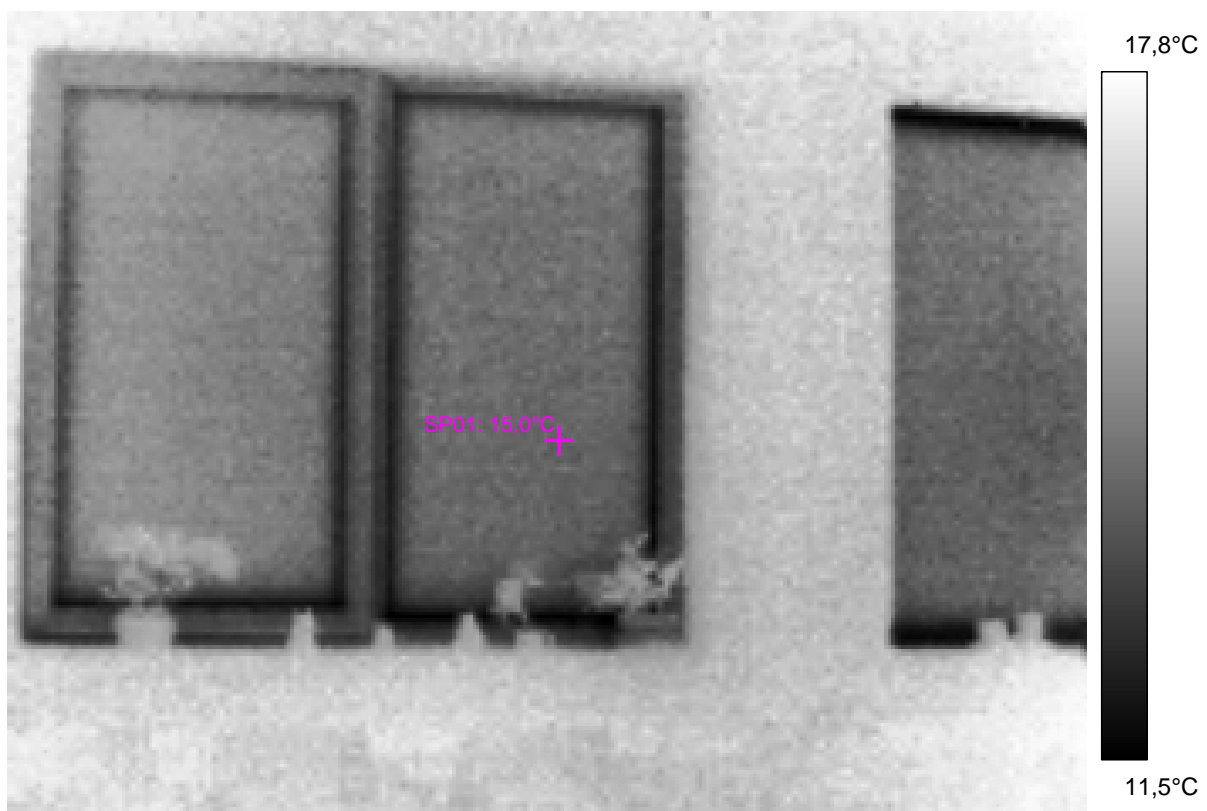
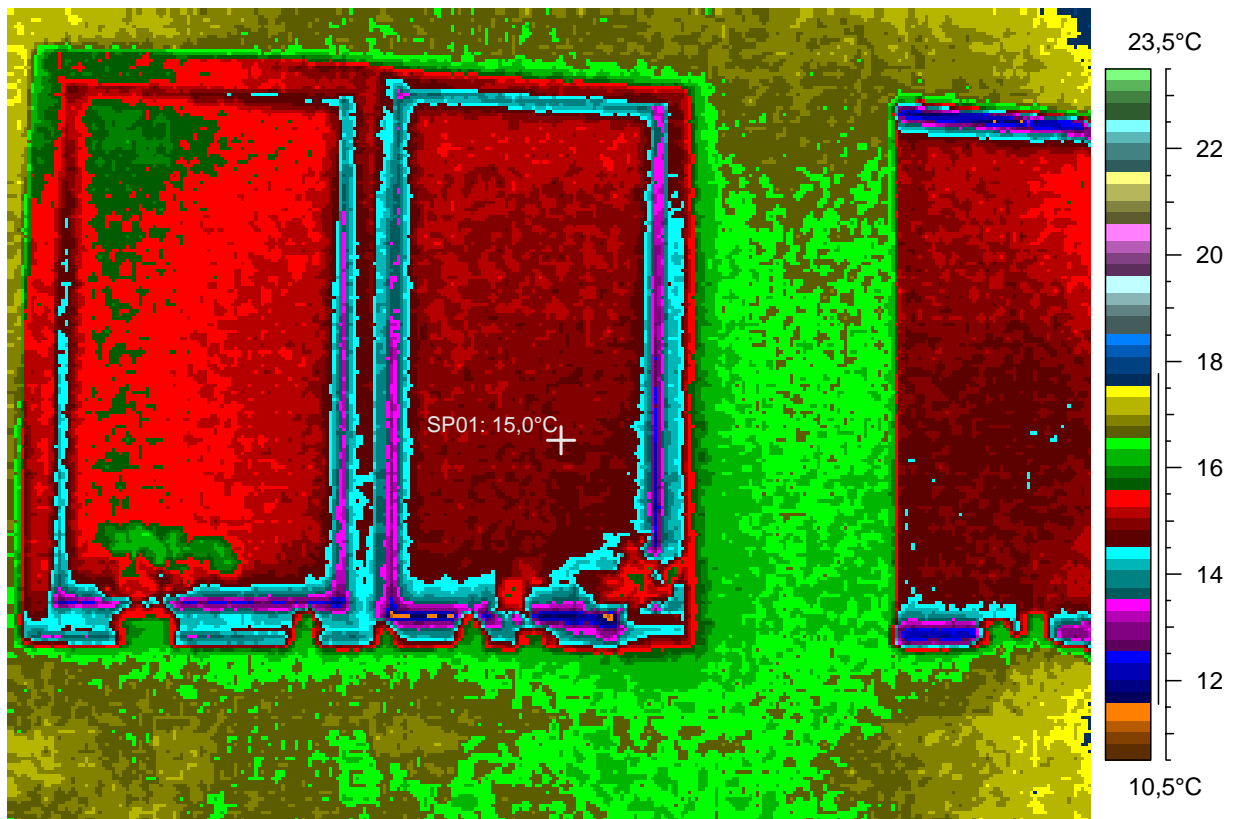
S Internorm window at left, part of the fixed glazing at right, within the W wall of the lecture hall.

## 7 - Ir\_1494.jpg

Label	Value
IR : max	17,9°C
IR : min	11,1°C
SP01	15,0°C

4.1.2008

2:19:59



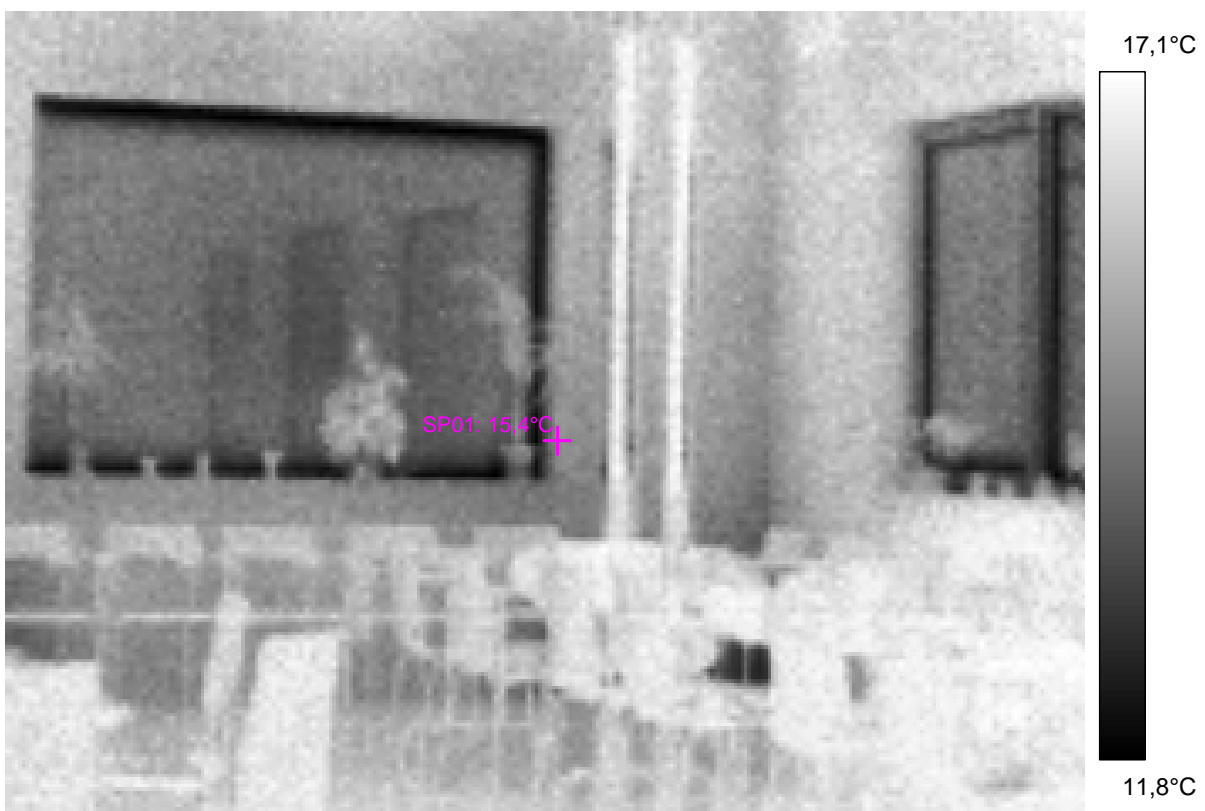
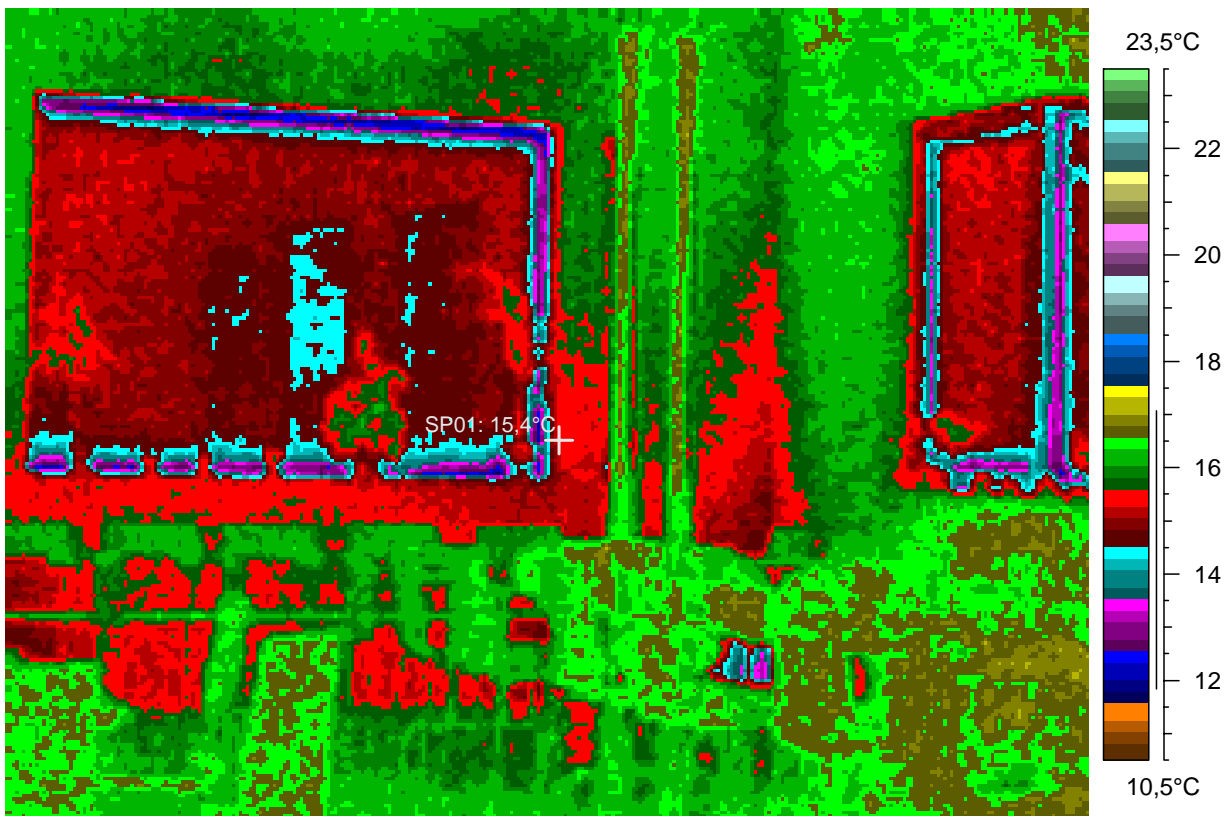
SW corner of the lectura hall, fixed glazing at left, Internorm at right, circulation zinc-covered tubes near the corner.

## 8 - Ir\_1495.jpg

Label	Value
IR : max	17,3°C
IR : min	11,6°C
SP01	15,4°C

4.1.2008

2:20:18





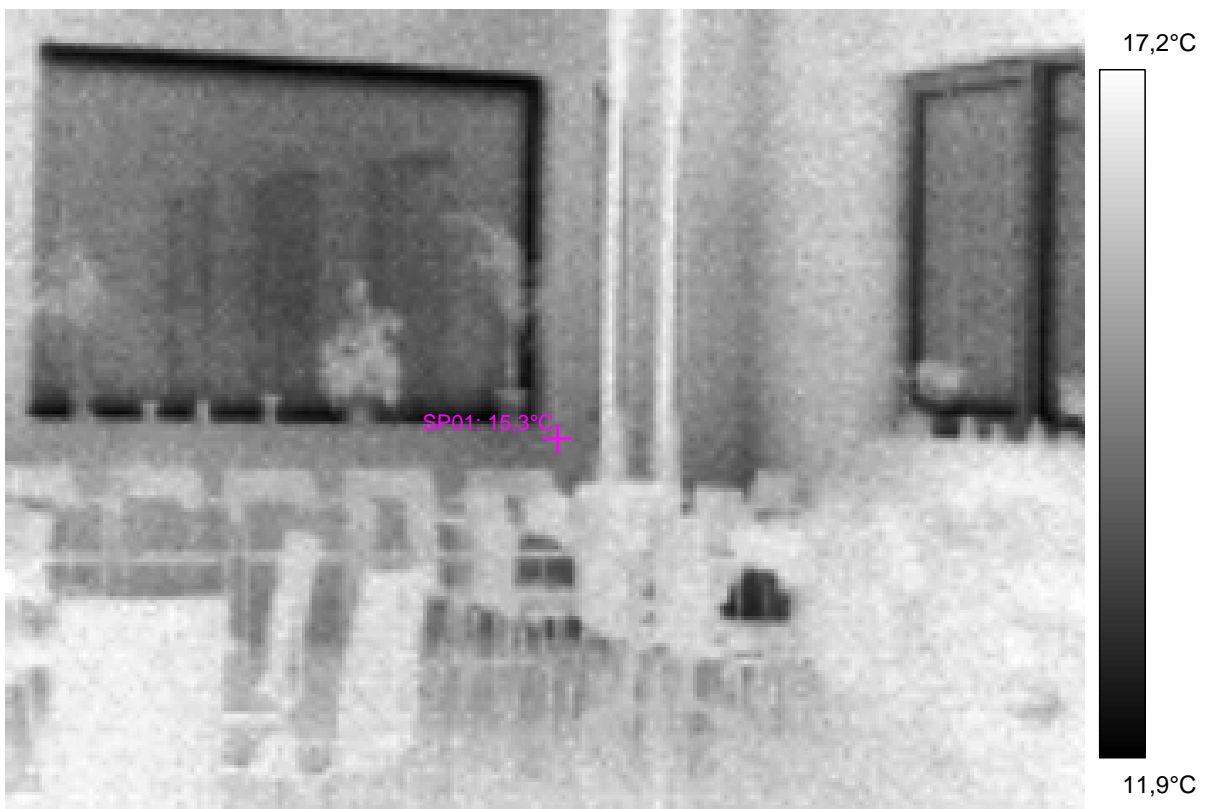
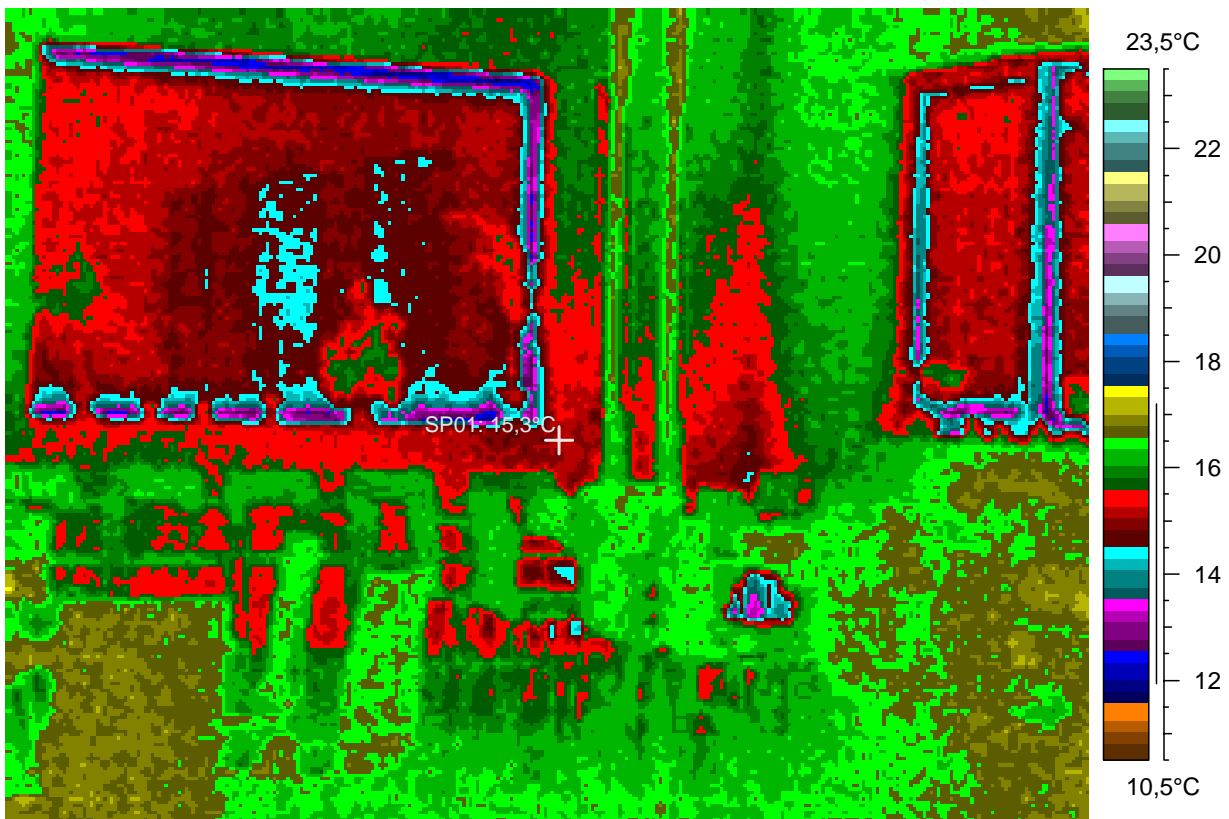
same as before, viewing a bit more down

## 9 - Ir\_1496.jpg

Label	Value
IR : max	17,5°C
IR : min	11,8°C
SP01	15,3°C

4.1.2008

2:20:28



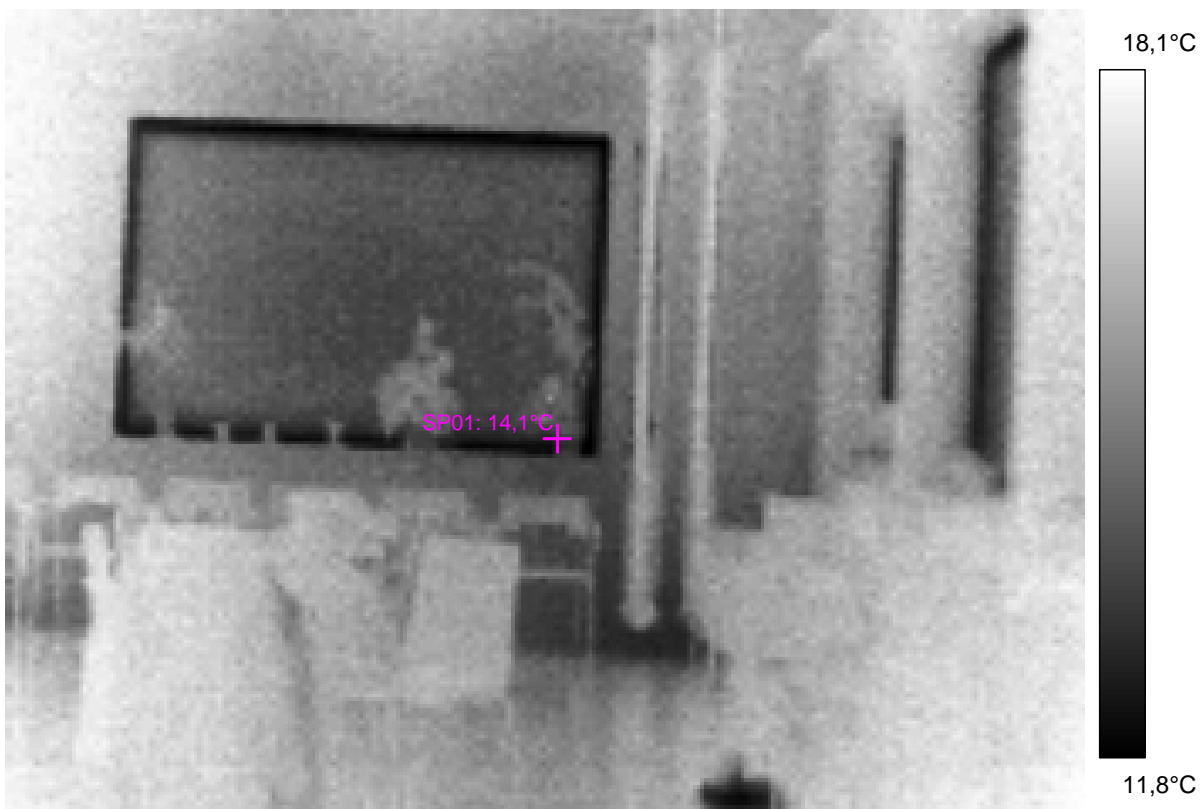
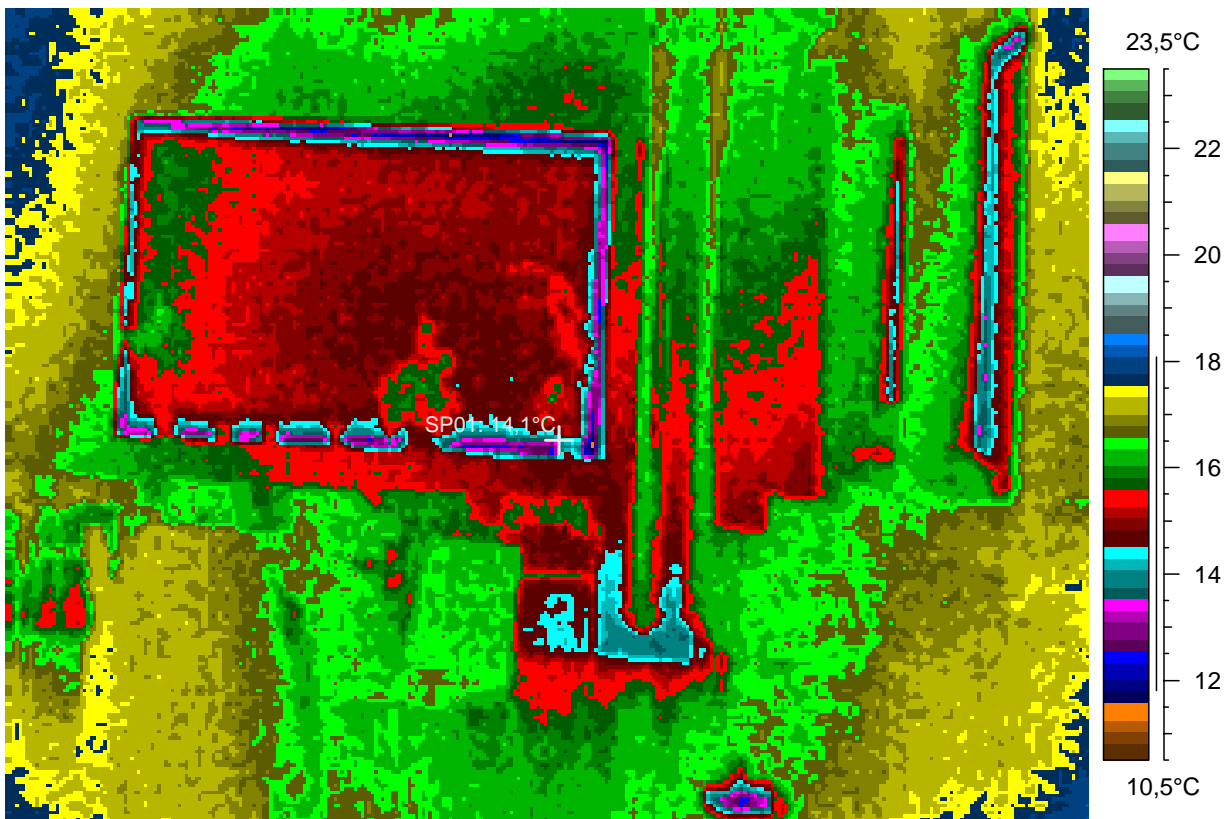
Similar as before, viewing the S glazing more directly. The thermal bridge from the ground at lower right corner appears. \=\\

## 10 - Ir\_1497.jpg

Label	Value
IR : max	18,2°C
IR : min	11,4°C
SP01	14,1°C

4.1.2008

2:20:58



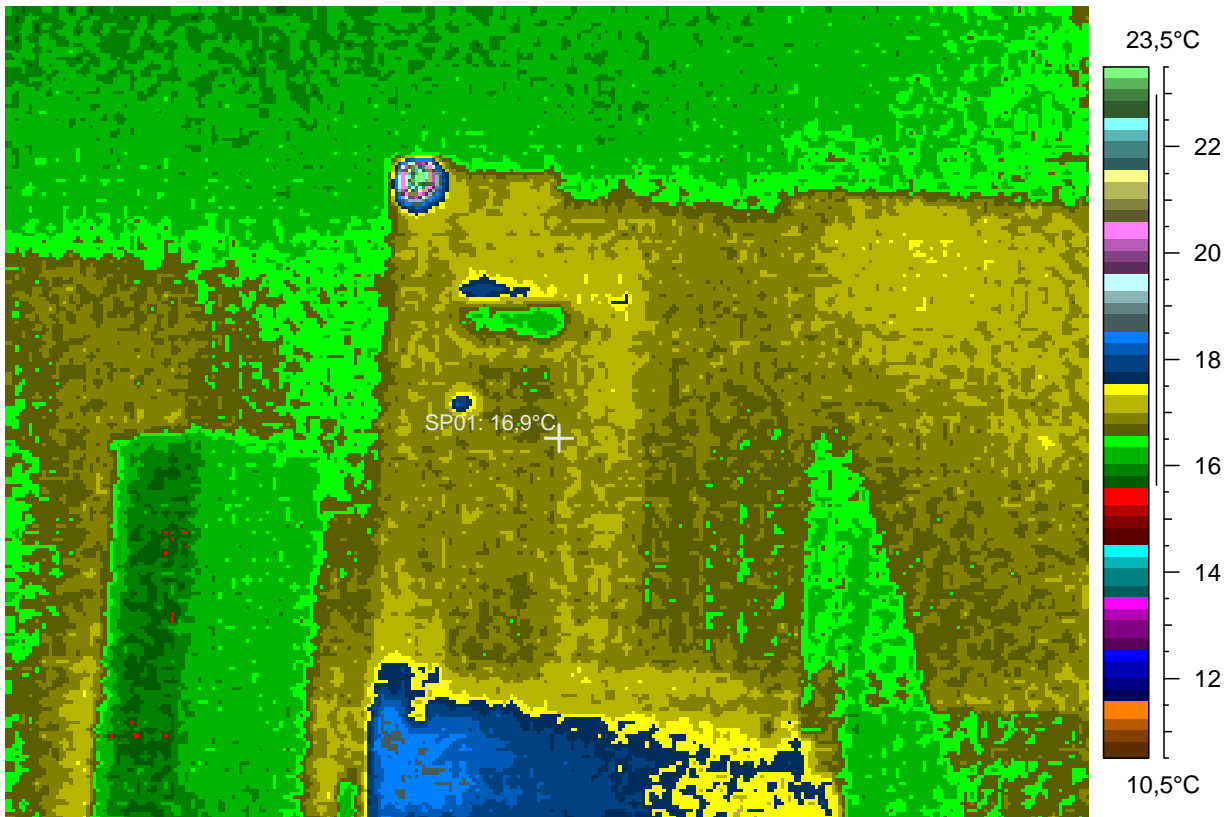
N part of the foyer. Adobe wall at left with a wooden box in front of it, staircase and door to dormitory at right.

## 11 - Ir\_1498.jpg

Label	Value
IR : max	24,1°C
IR : min	15,5°C
SP01	16,9°C

4.1.2008

2:22:50



comments: staircase to the cellar

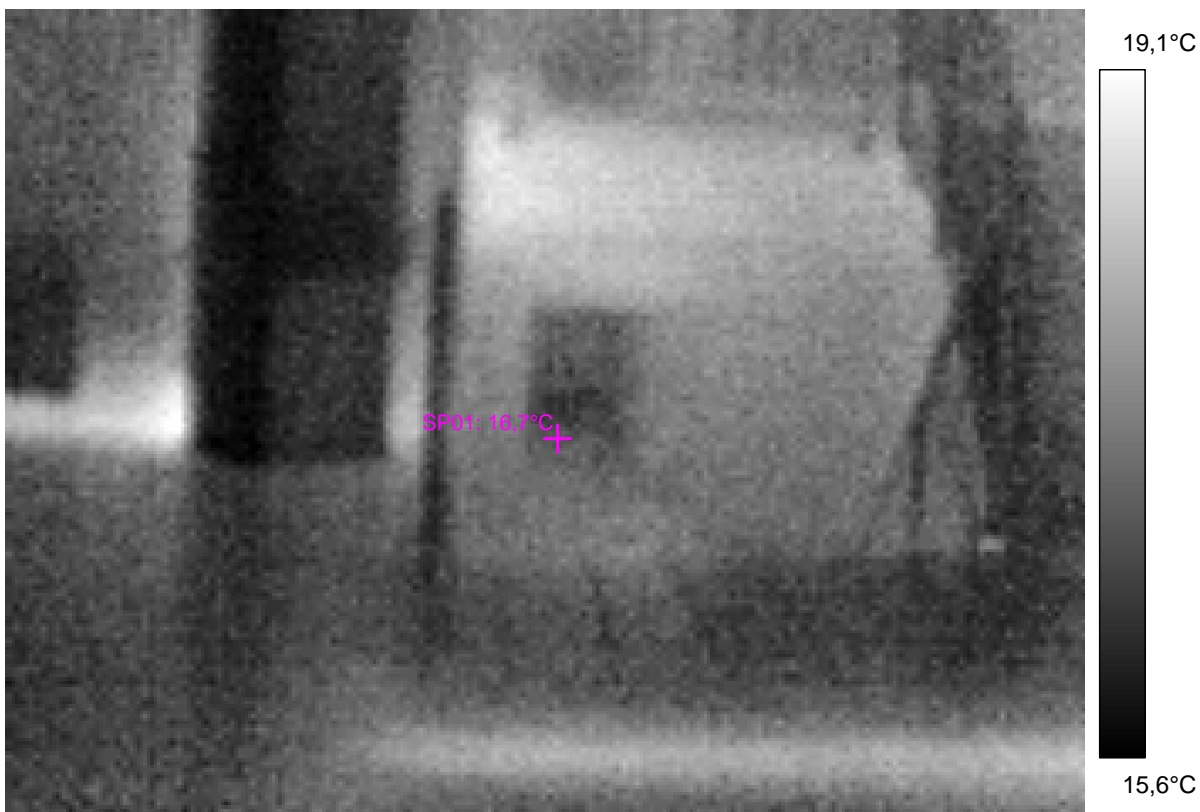
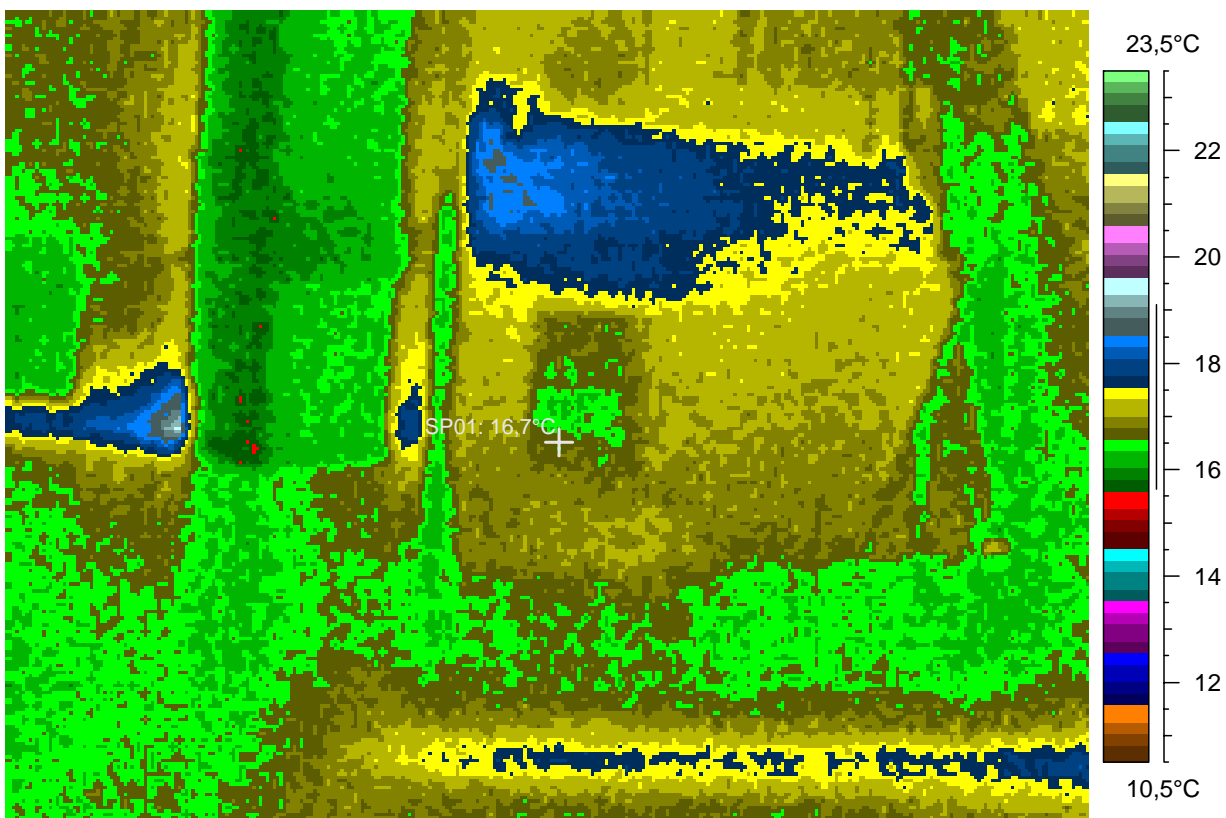
blabla

# 12 - Ir\_1499.jpg

Label	Value
IR : max	19,5°C
IR : min	15,5°C
SP01	16,7°C

4.1.2008

2:22:57



bottom of the two straw systems

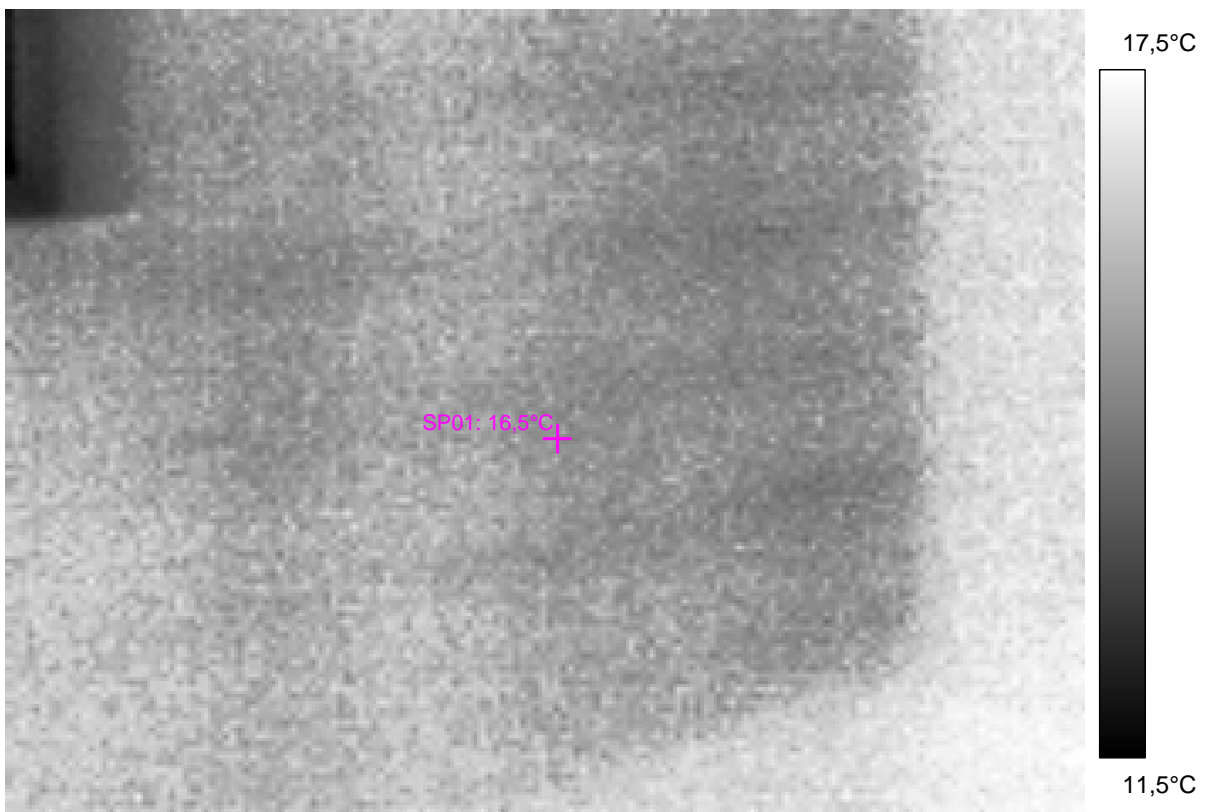
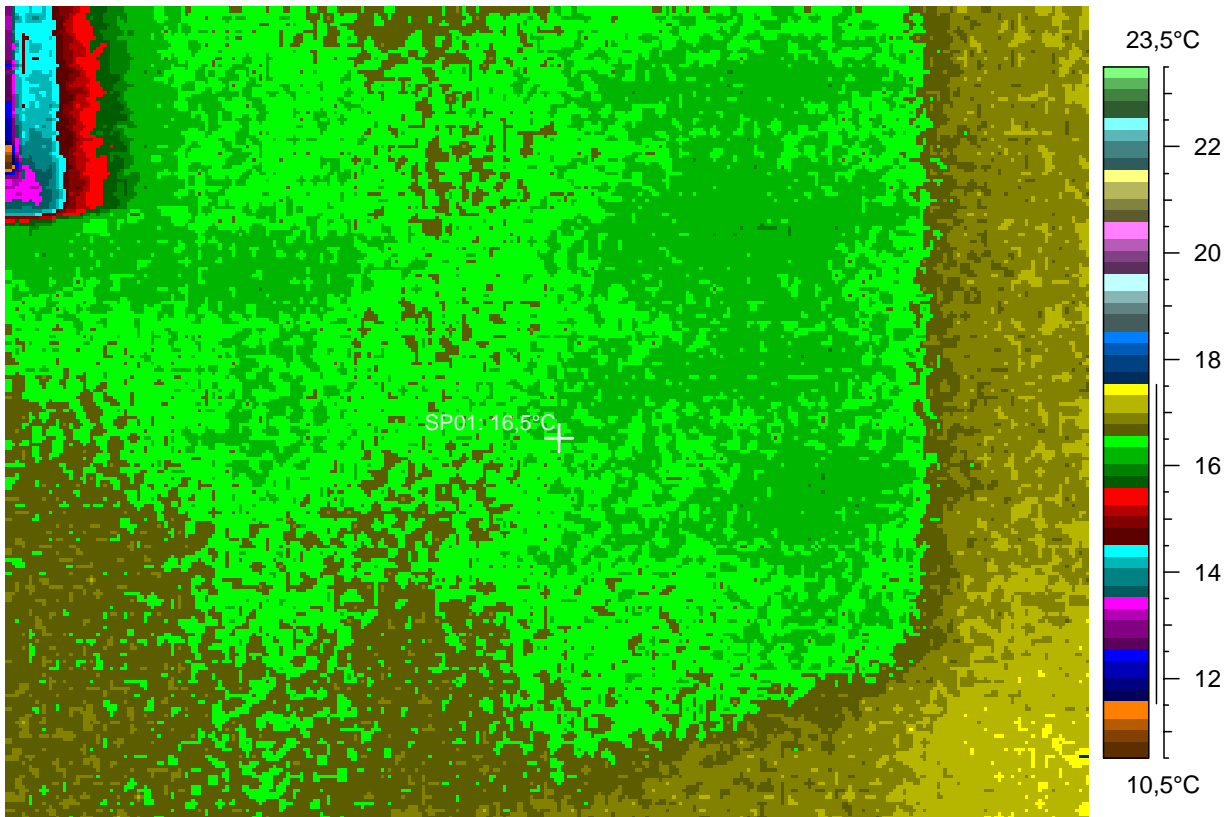
blabla

### 13 - Ir\_1500.jpg

Label	Value
IR : max	17,7°C
IR : min	10,6°C
SP01	16,5°C

4.1.2008

9:06:29



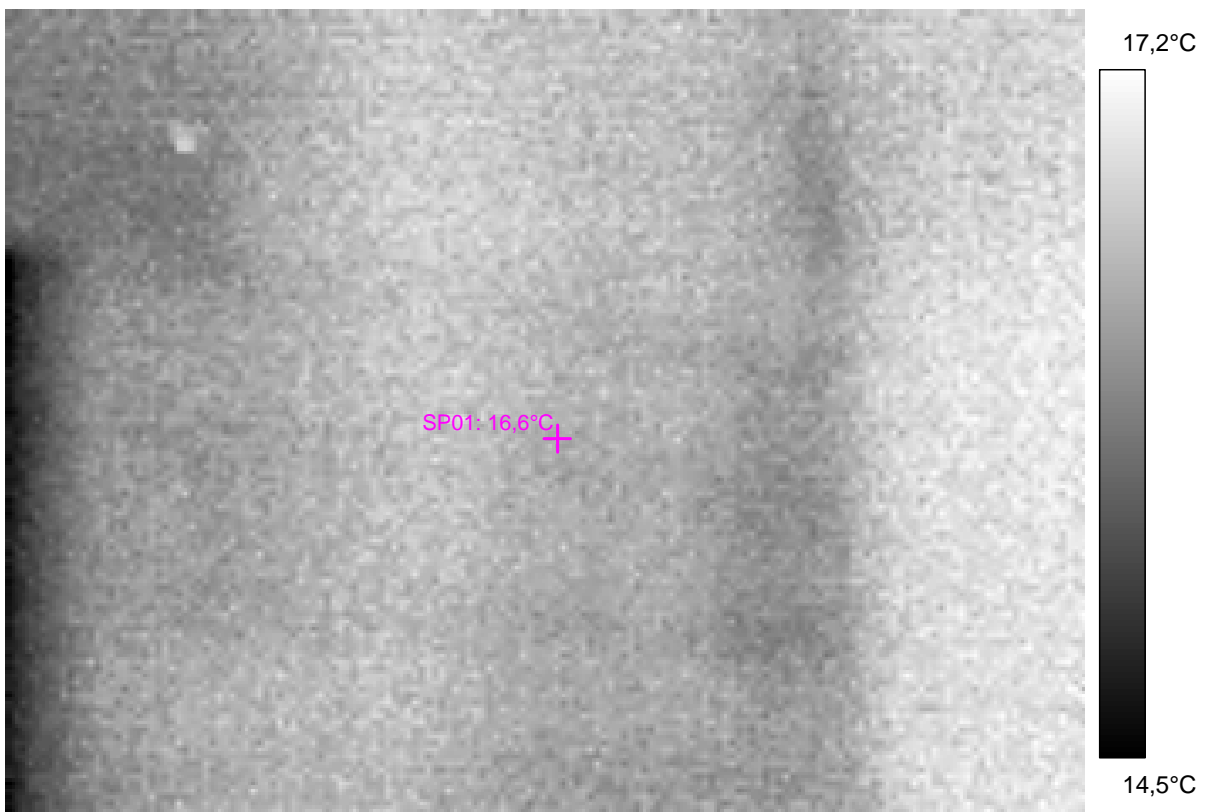
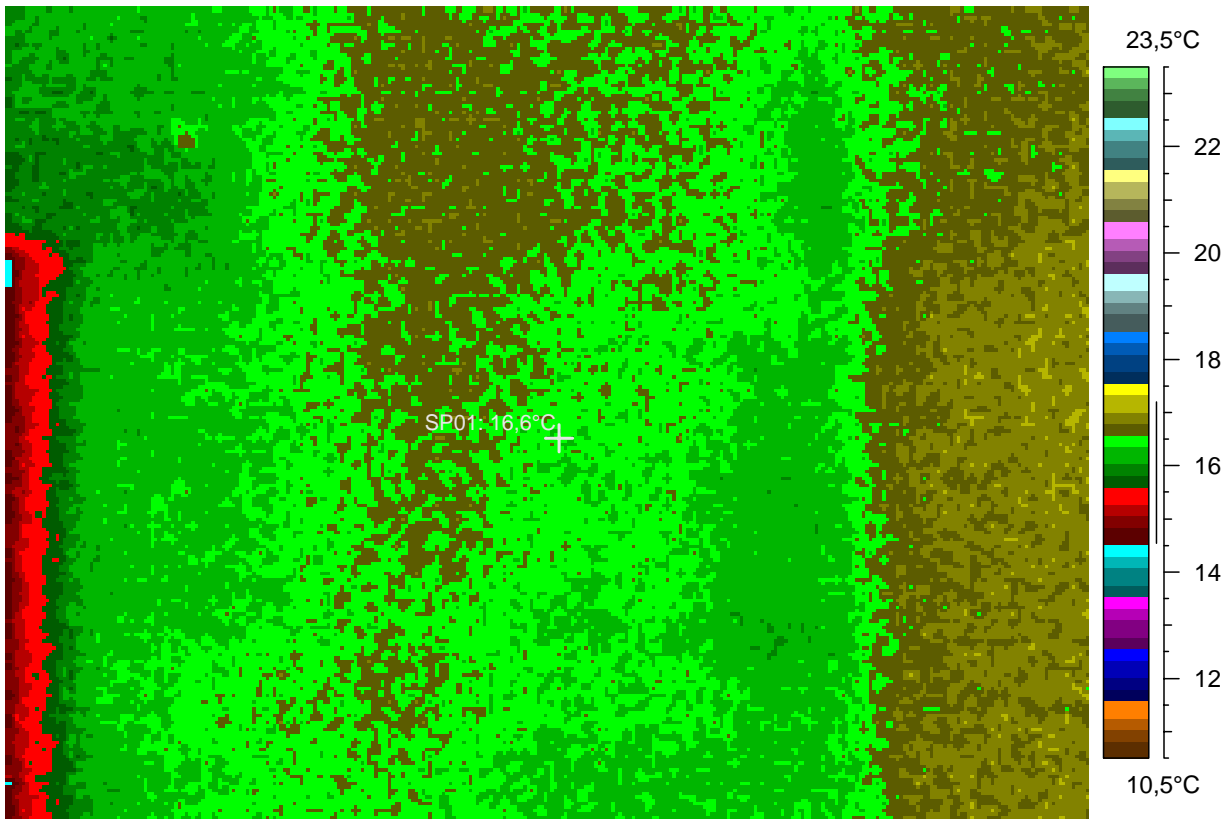
near the top of them

# 14 - Ir\_1501.jpg

Label	Value
IR : max	17,3°C
IR : min	14,4°C
SP01	16,6°C

4.1.2008

9:06:43



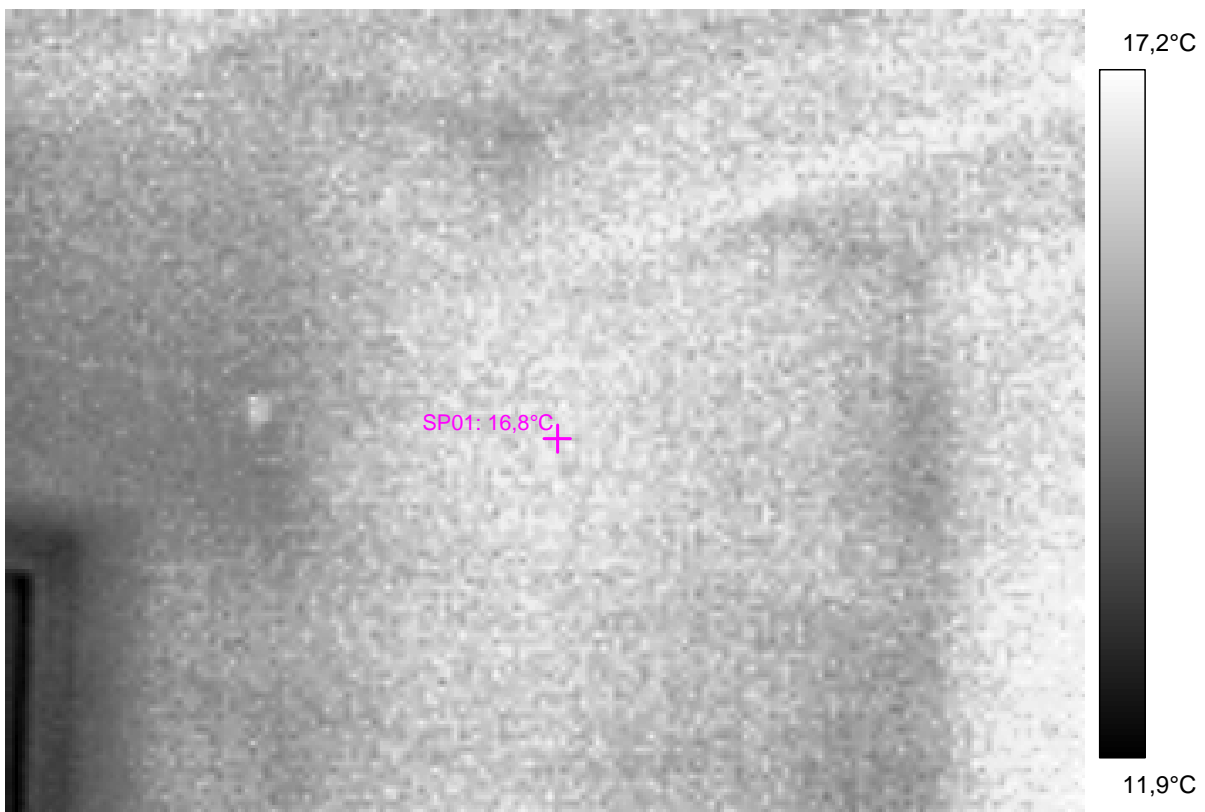
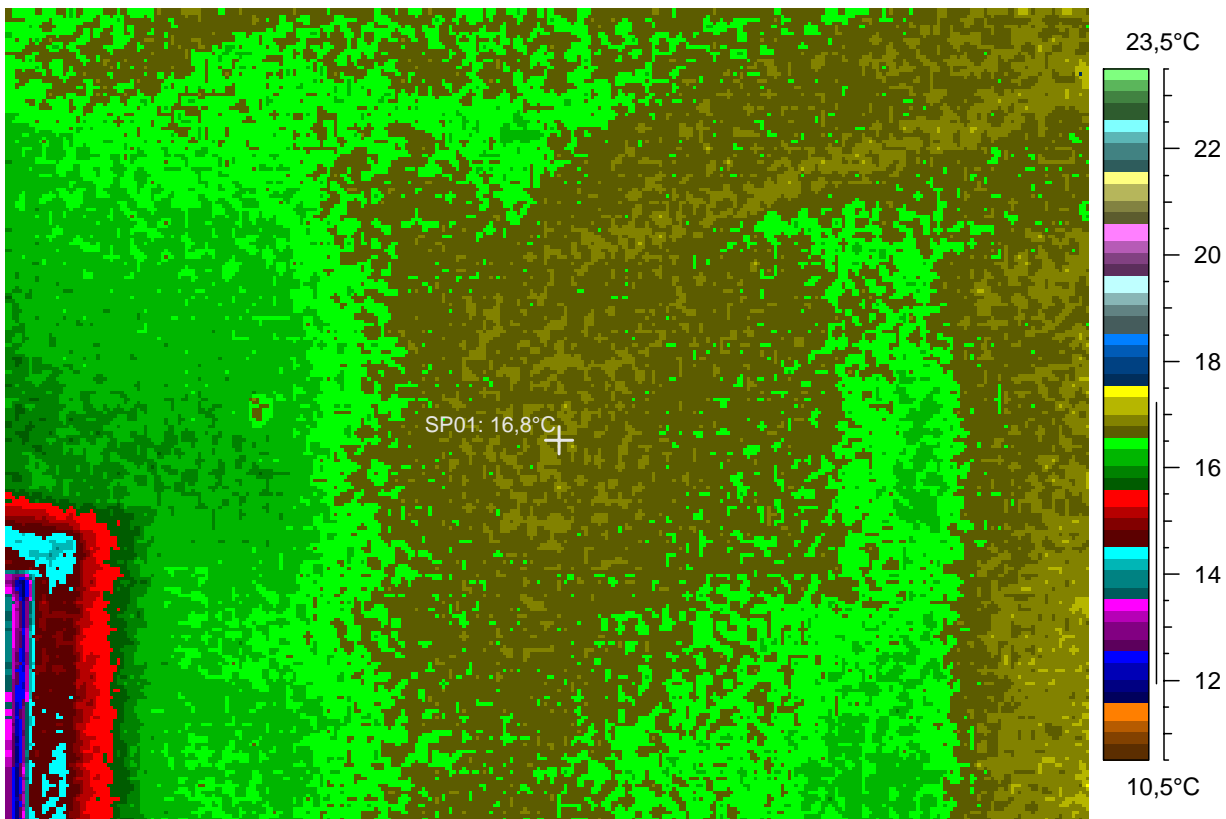
top of them

# 15 - Ir\_1502.jpg

Label	Value
IR : max	17,6°C
IR : min	11,7°C
SP01	16,8°C

4.1.2008

9:07:28



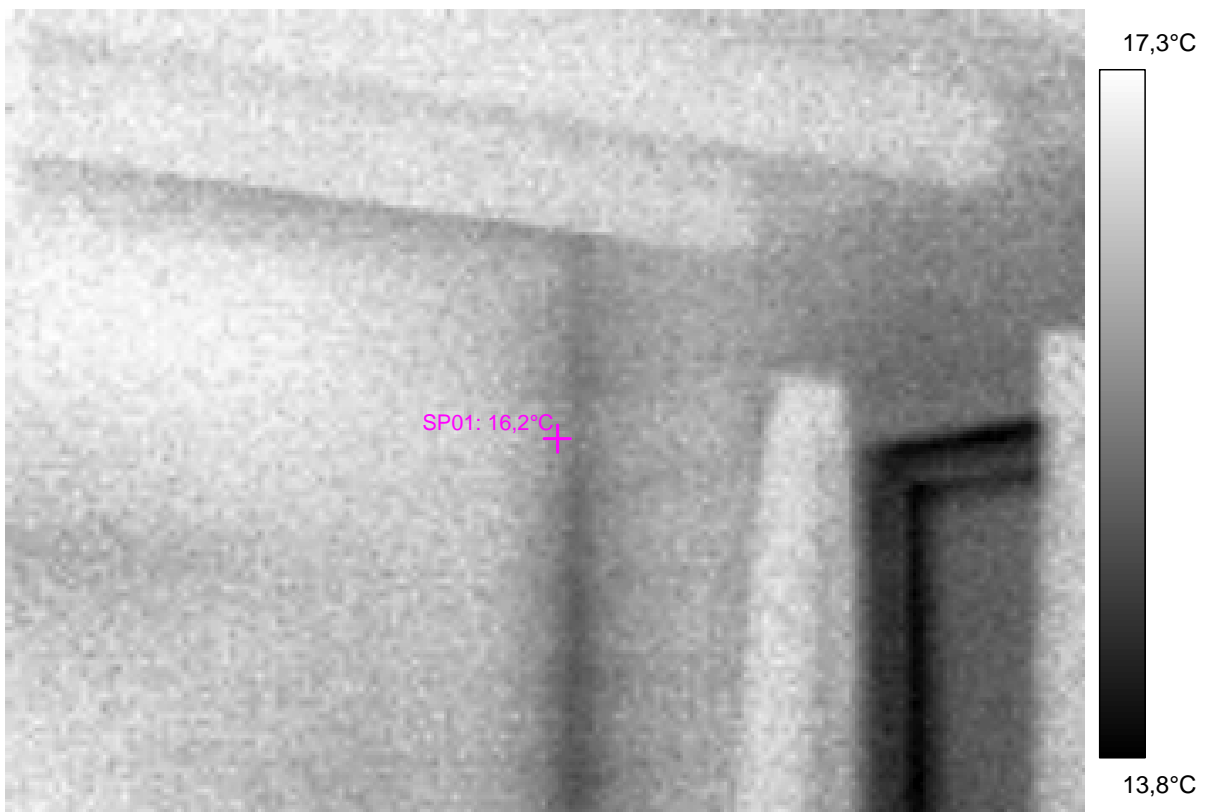
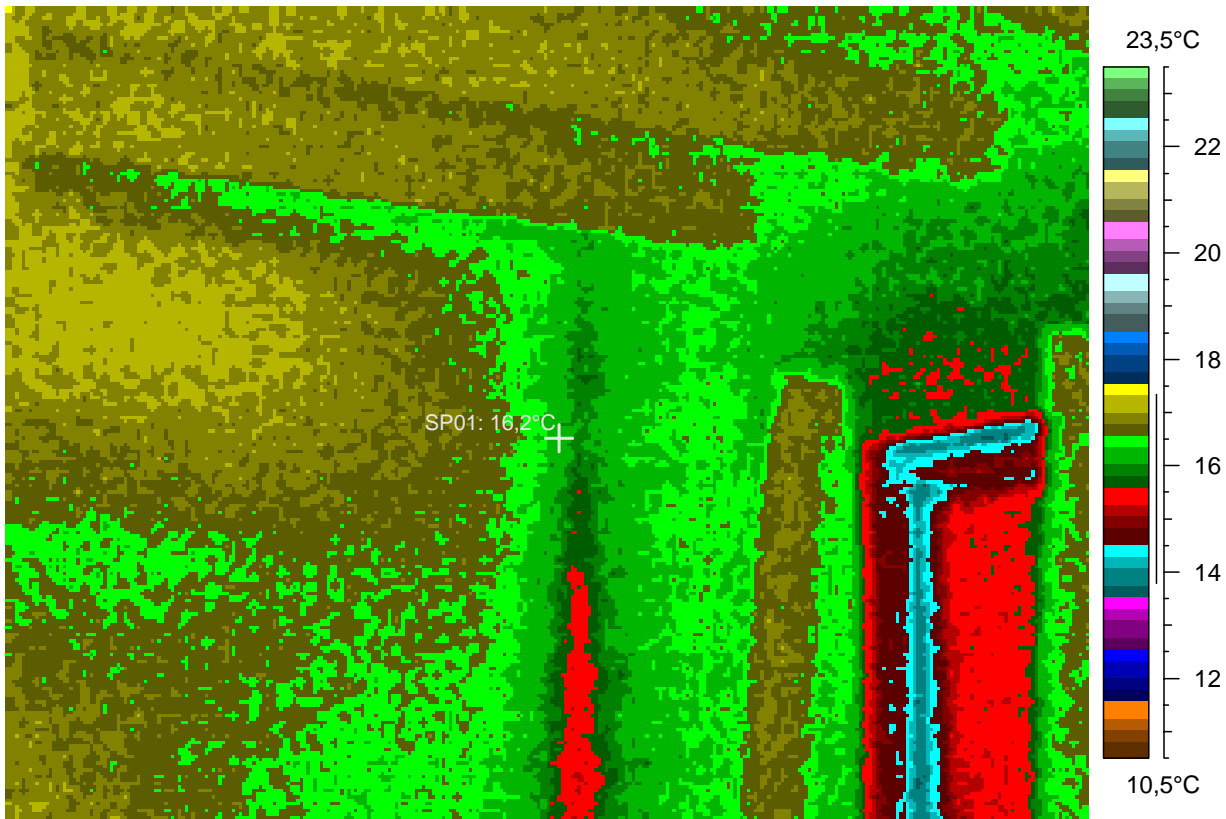
the opposite corner, mineral wool to the left

# 16 - Ir\_1503.jpg

Label	Value
IR : max	17,5°C
IR : min	13,6°C
SP01	16,2°C

4.1.2008

9:08:43





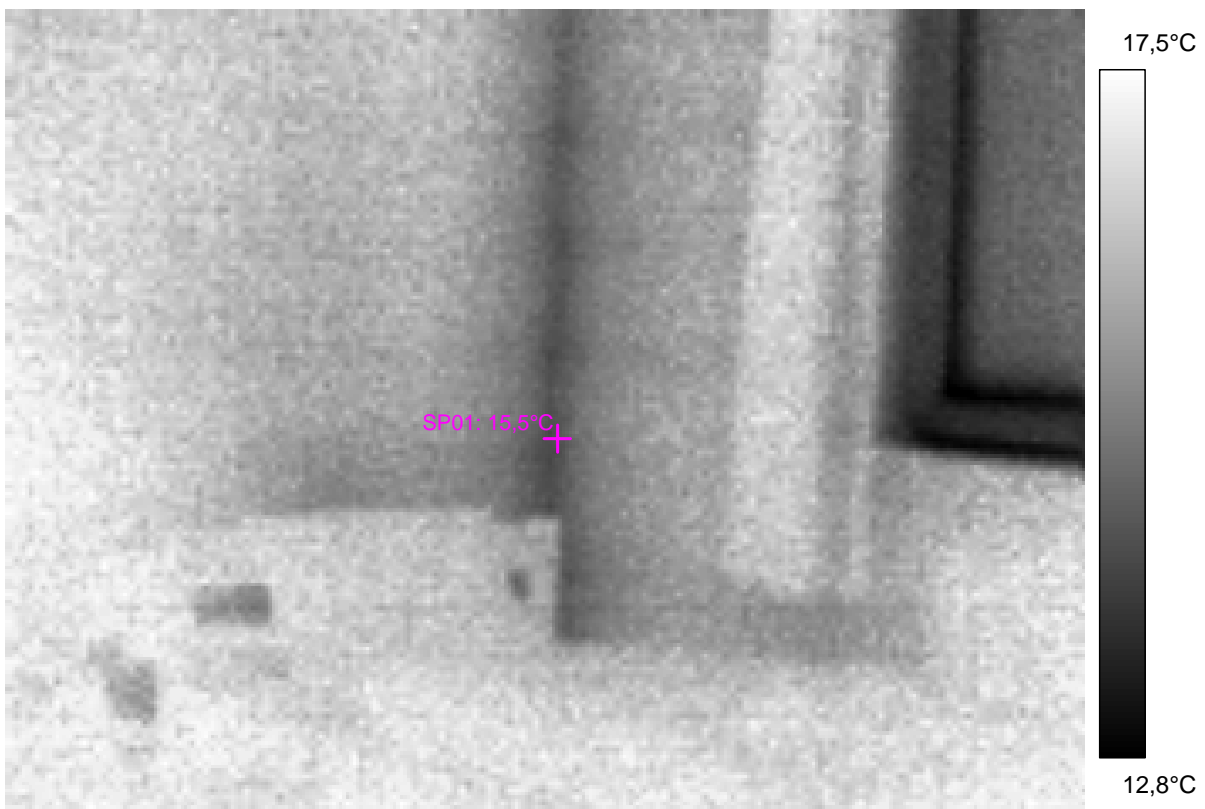
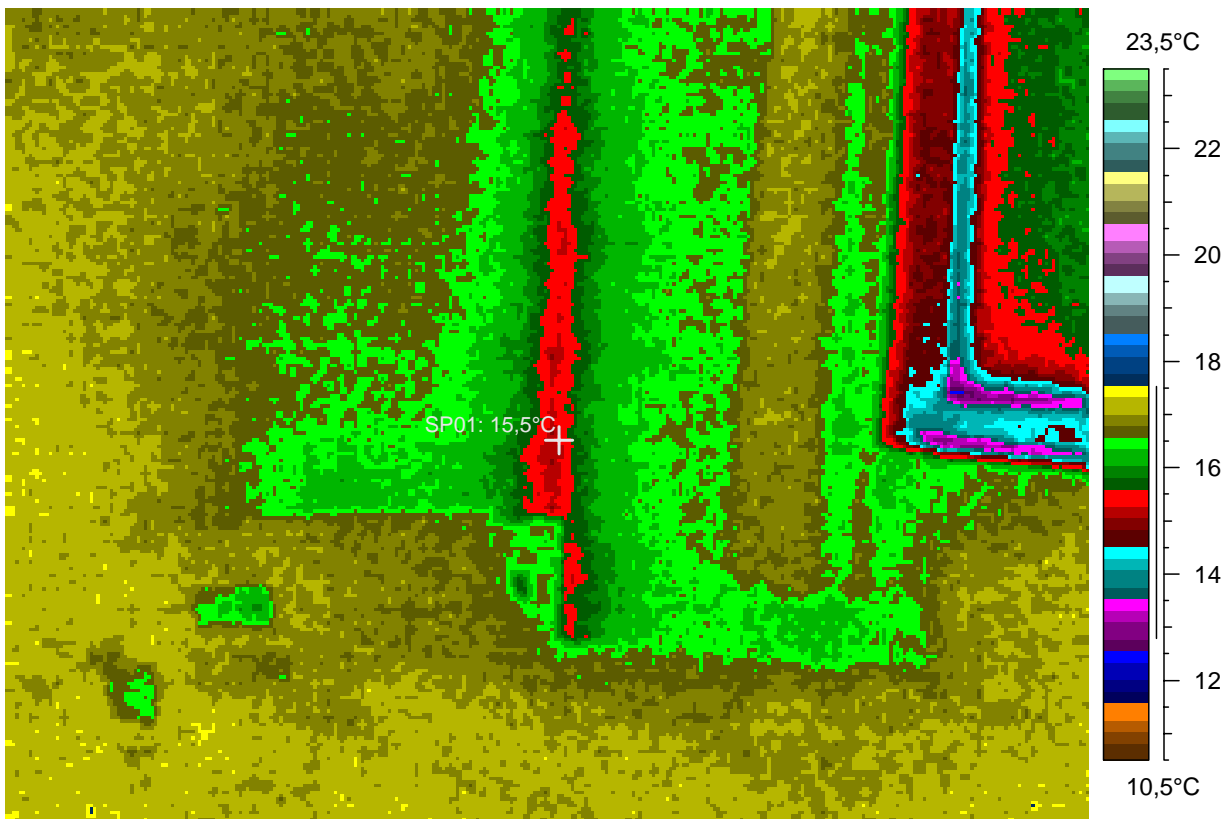
same, lower down, with a bed at the bottom

## 17 - Ir\_1504.jpg

Label	Value
IR : max	17,8°C
IR : min	12,5°C
SP01	15,5°C

4.1.2008

9:08:52



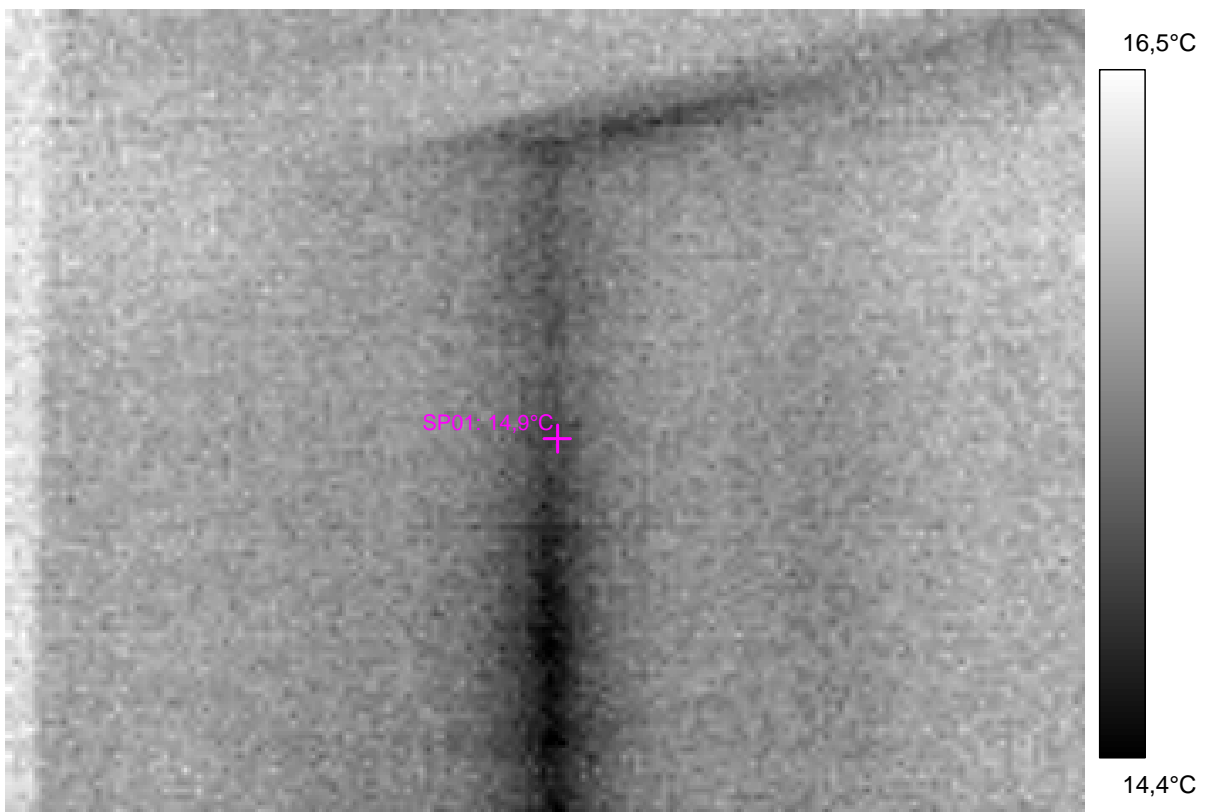
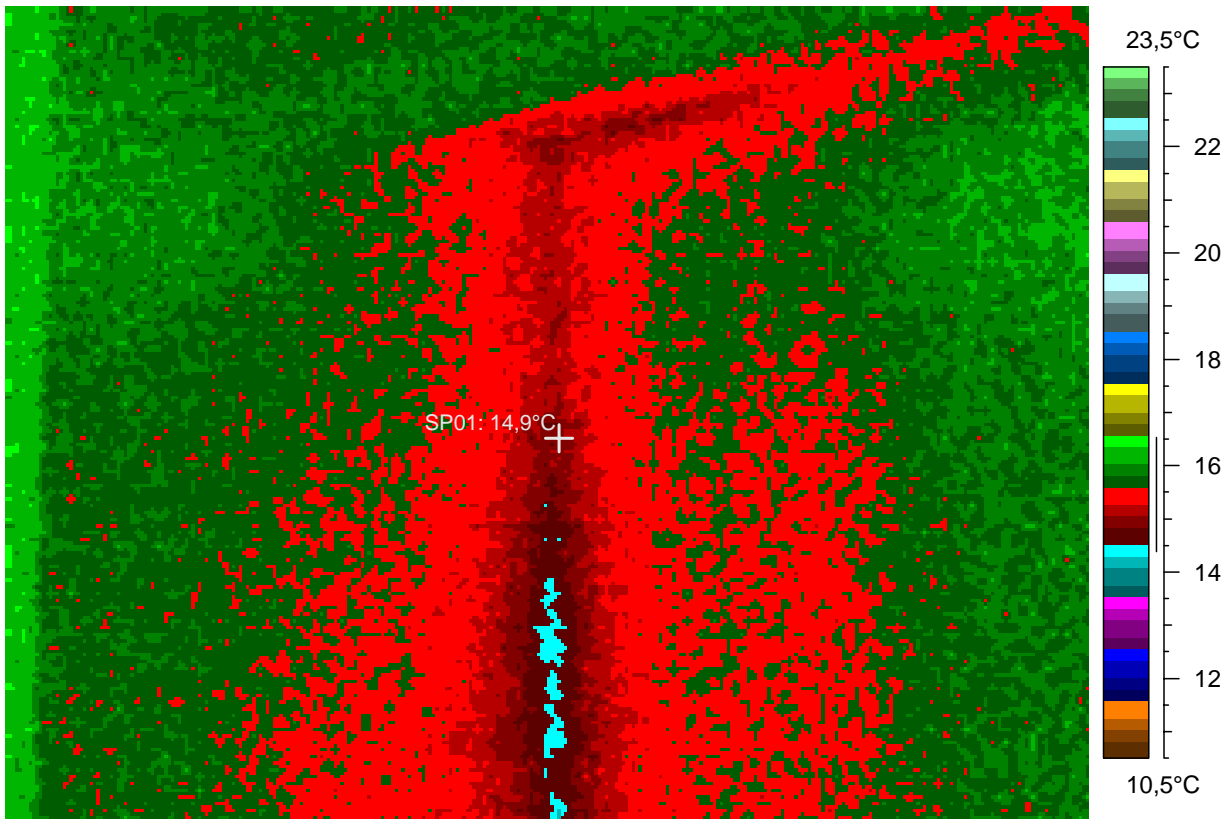
NW top corner, straw at left, mineral wool at right

18 - Ir\_1505.jpg

Label	Value
IR : max	16,6°C
IR : min	14,3°C
SP01	14,9°C

4.1.2008

9:09:55



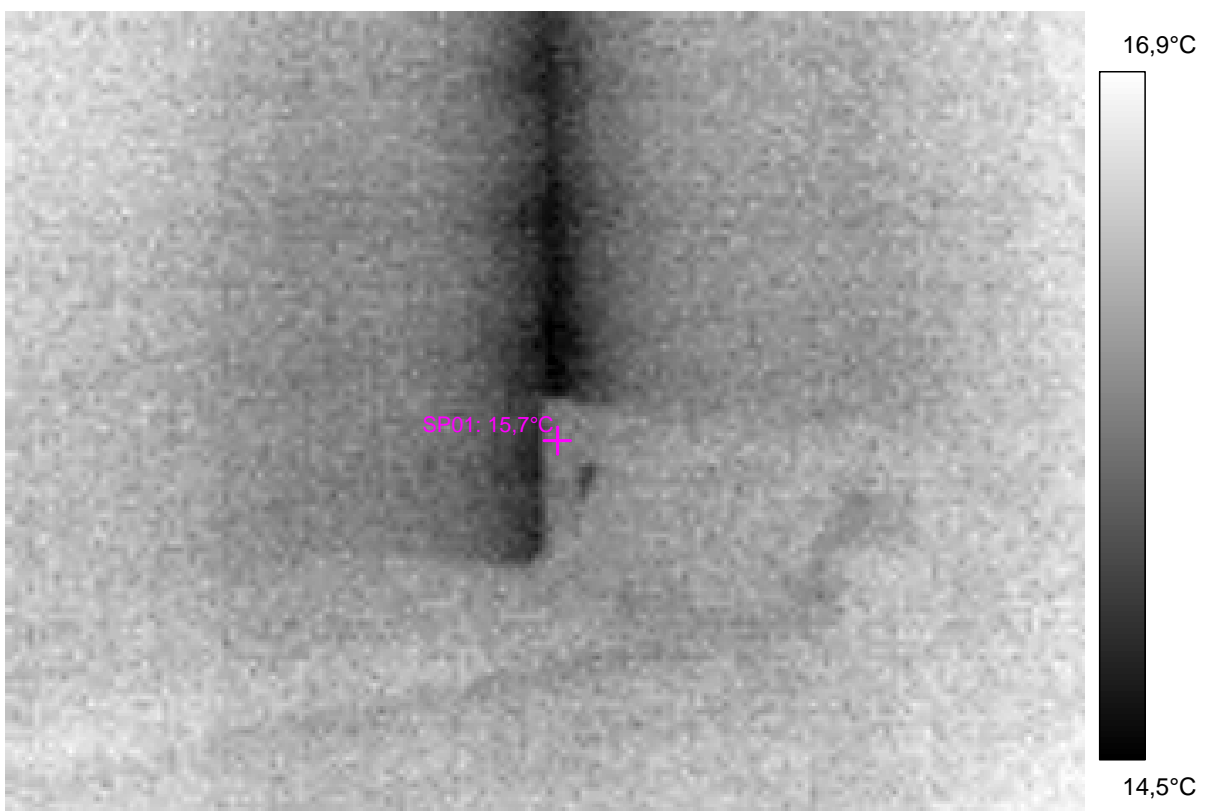
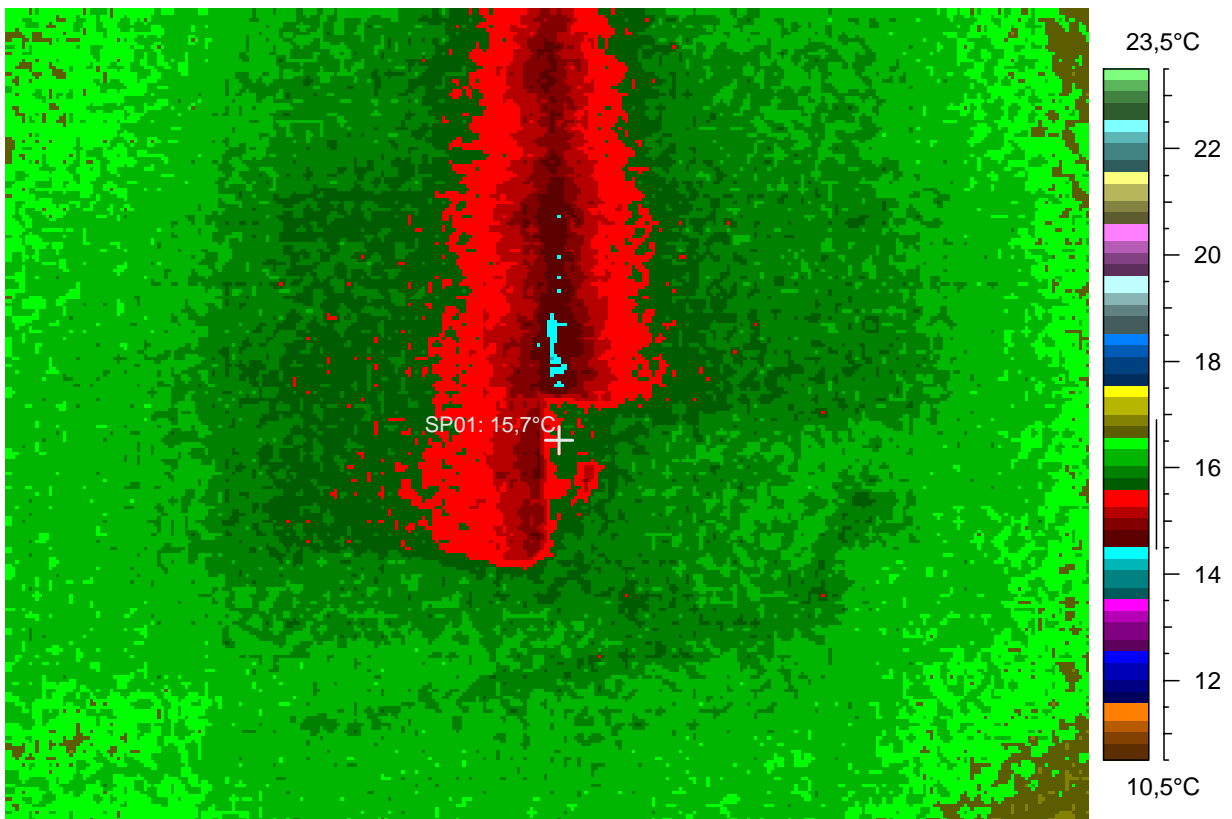
same, down to the bed

## 19 - Ir\_1506.jpg

Label	Value
IR : max	17,0°C
IR : min	14,3°C
SP01	15,7°C

4.1.2008

9:10:09



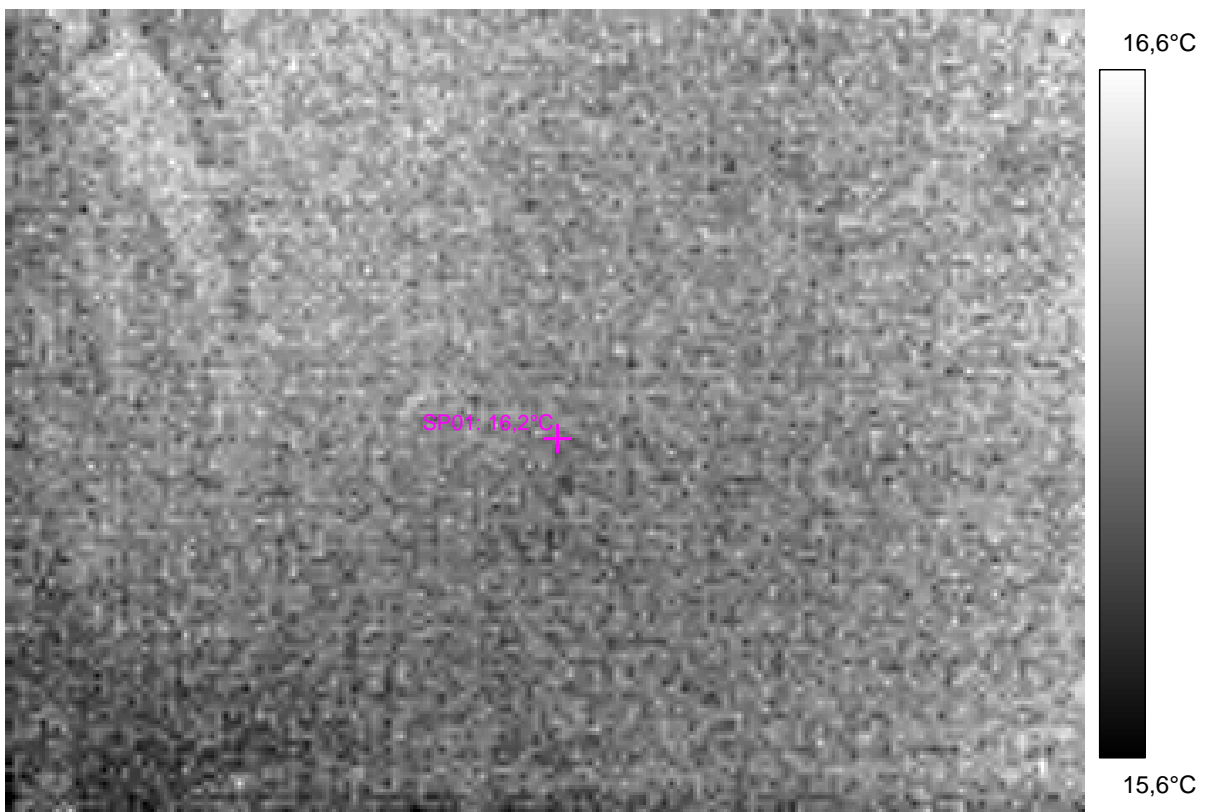
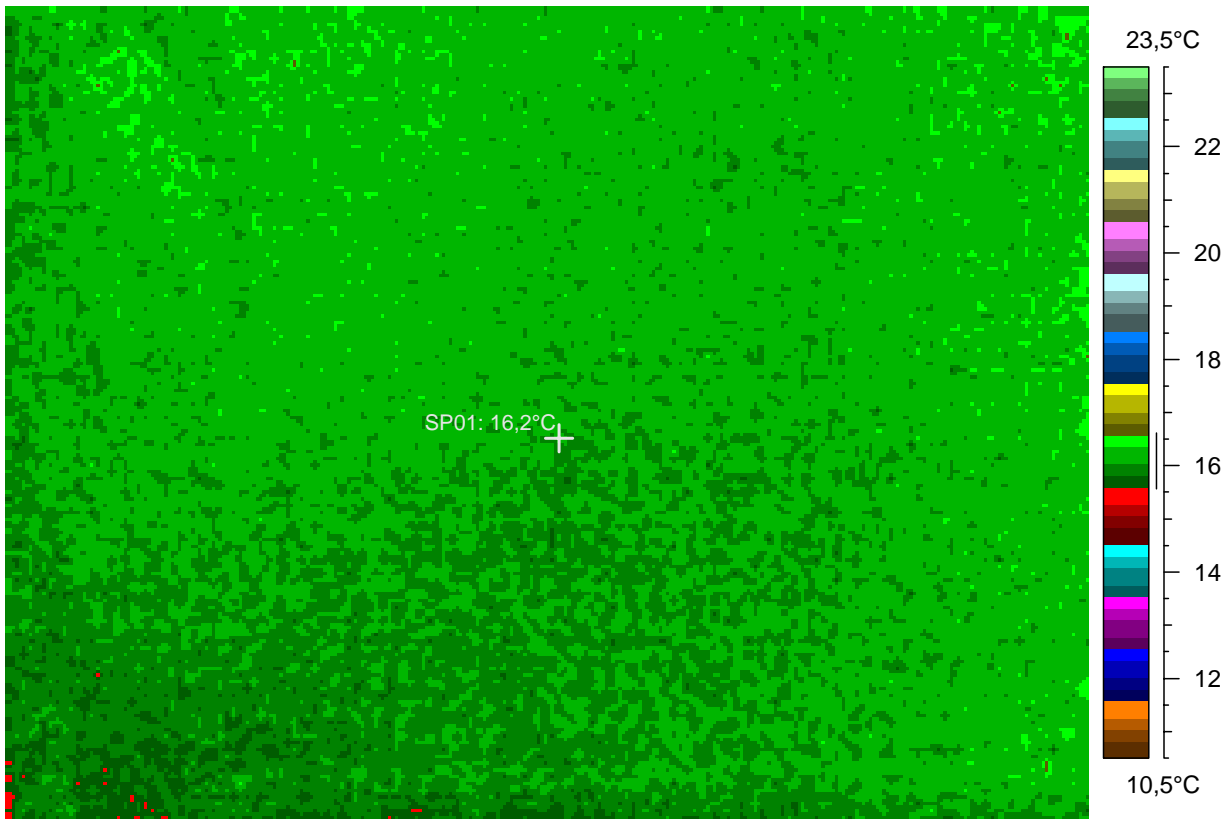
the adobe wall in the foyer, probably

## 20 - Ir\_1507.jpg

Label	Value
IR : max	16,7°C
IR : min	15,4°C
SP01	16,2°C

4.1.2008

9:12:21



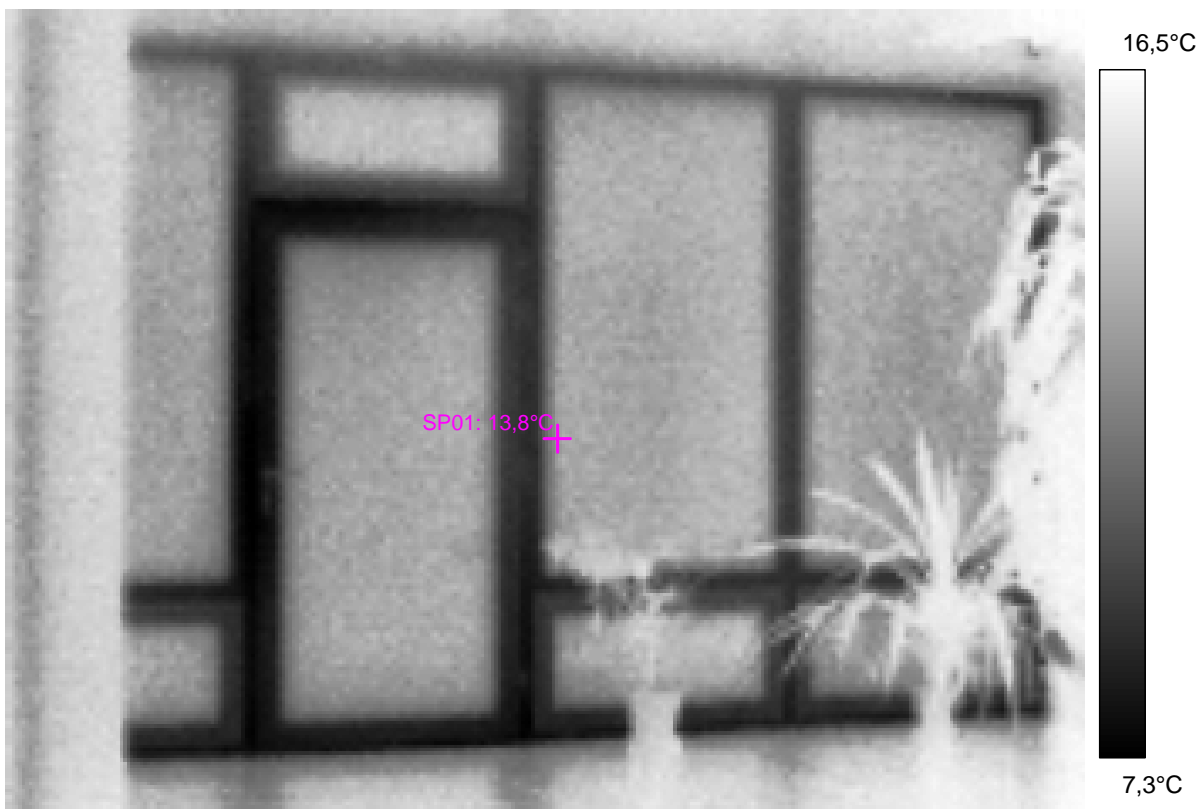
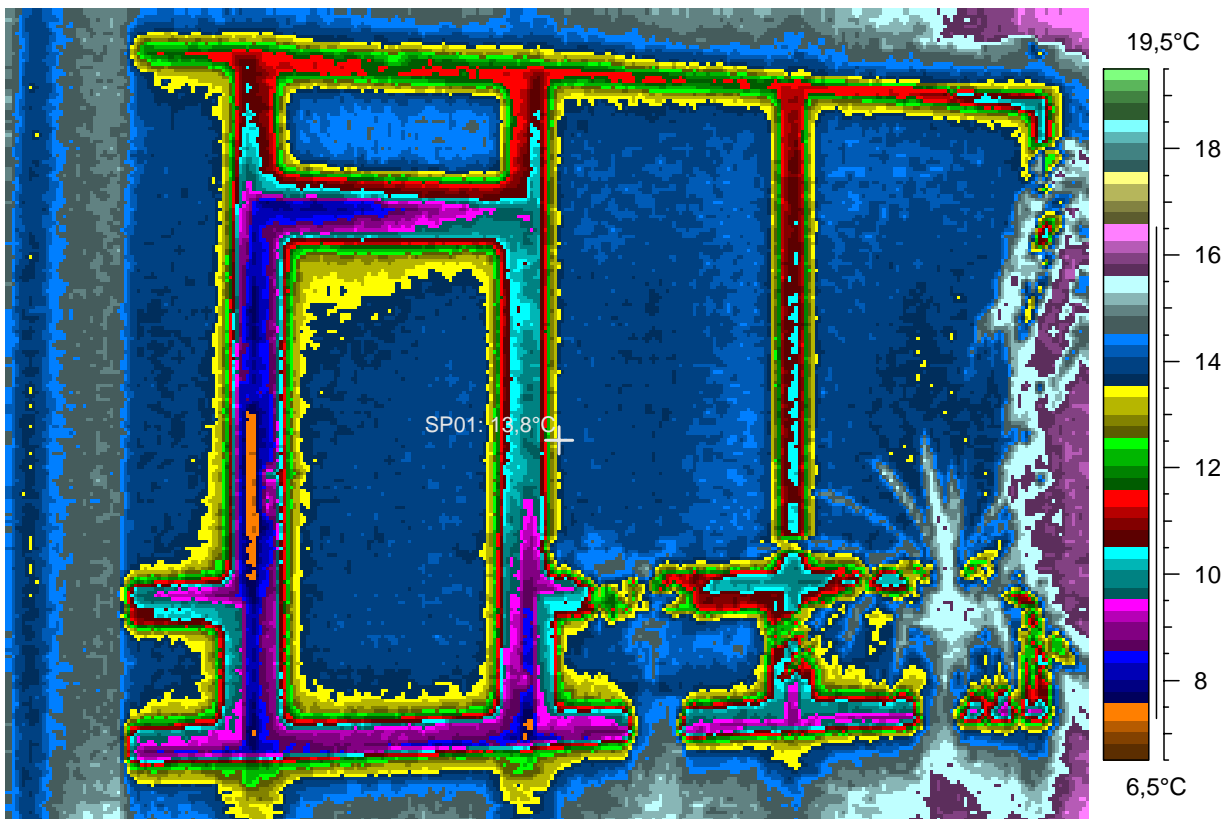
winter inner entrance from the foyer

21 - Ir\_1508.jpg

Label	Value
IR : max	16,6°C
IR : min	7,1°C
SP01	13,8°C

4.1.2008

9:13:57



mirror view of lecture hall, viewed from the screen southwards

22 - Ir\_1509.jpg

Label	Value
IR : max	28,8°C
IR : min	13,1°C
SP01	15,7°C

4.1.2008

9:15:32

