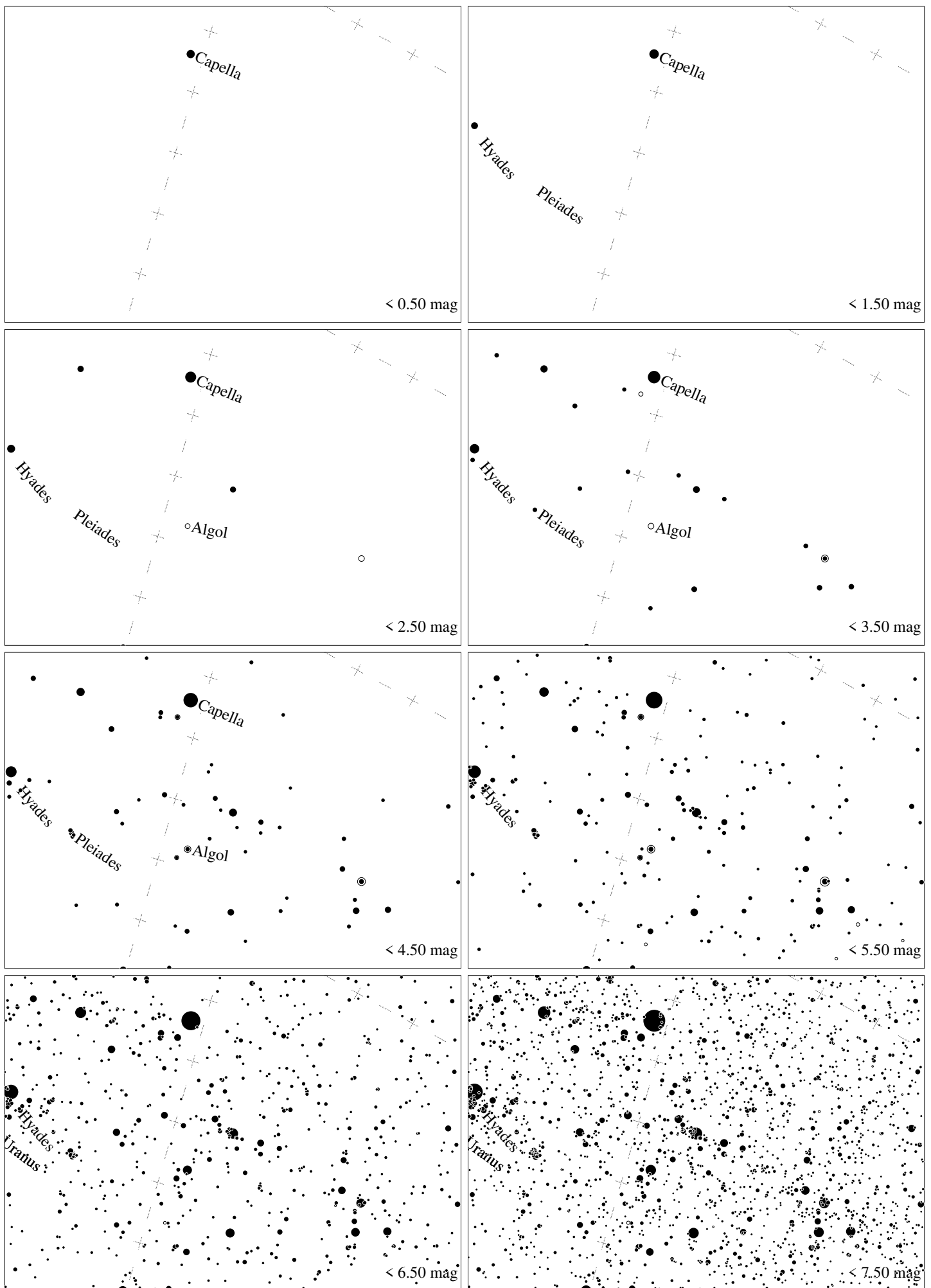
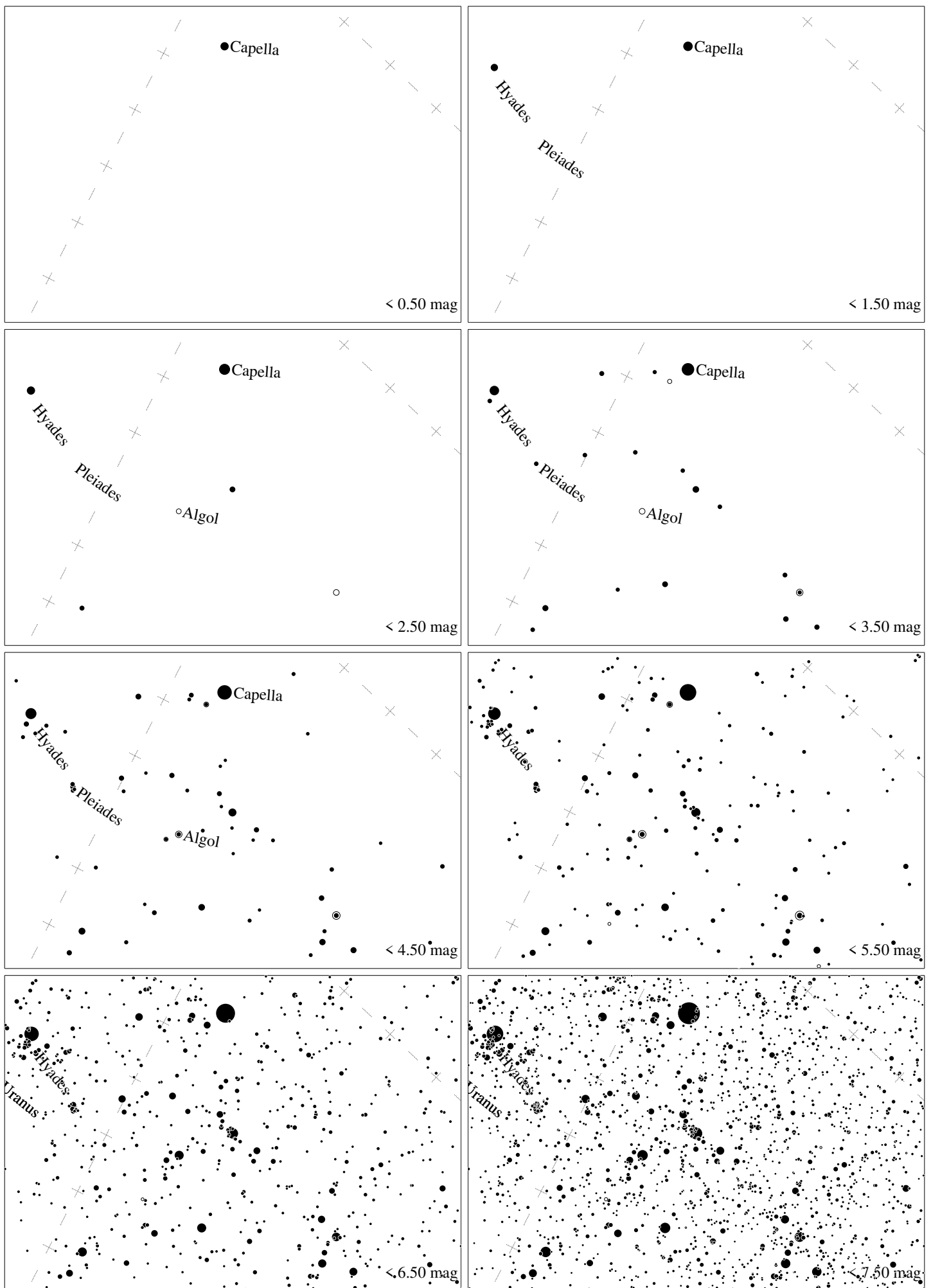


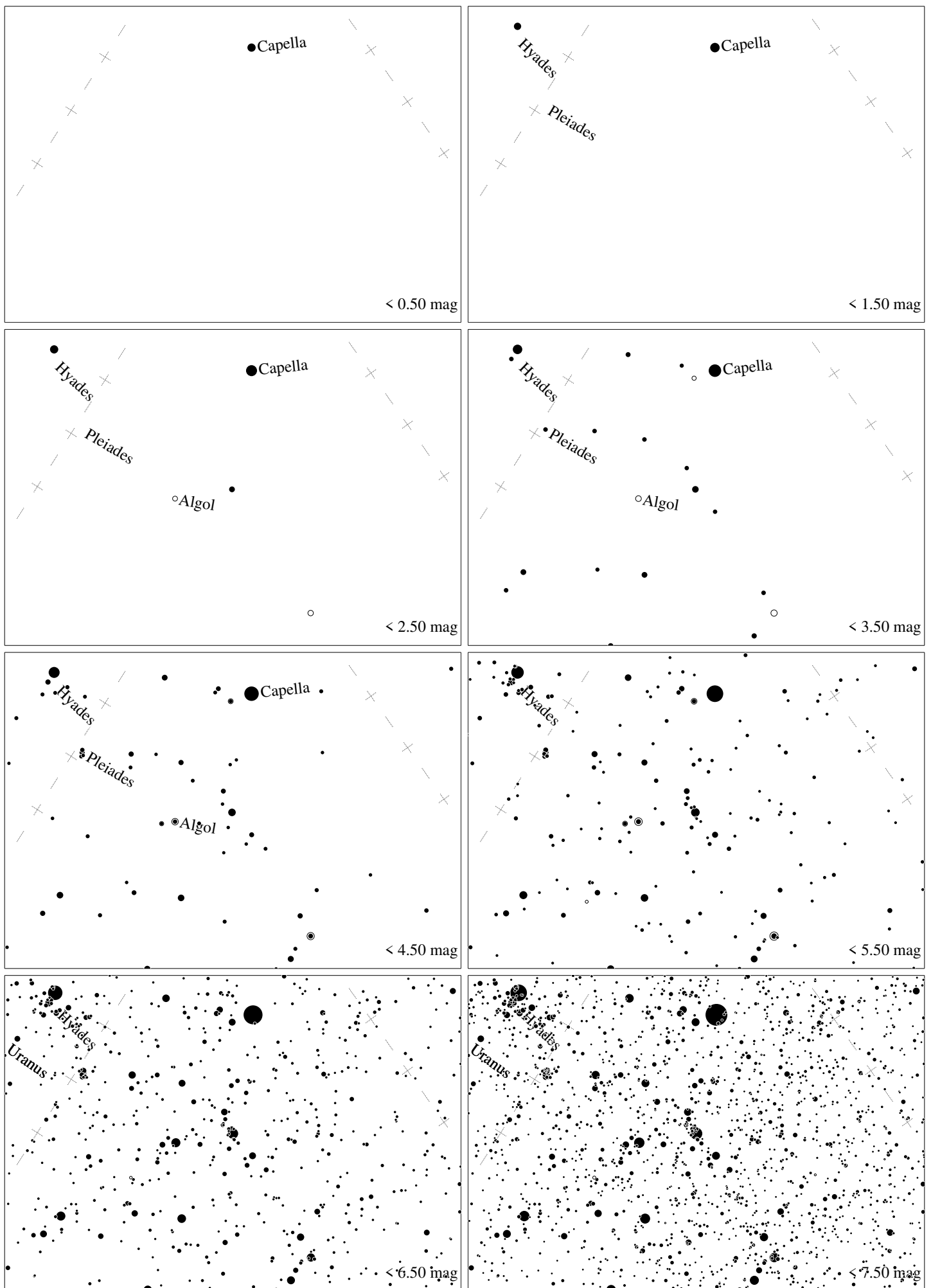
Maps for Globe at Night latitude **60°**, 2026-02-14, 21 h local time (Sun at -31°), transparent air. Lines from N(E,S,W) to zenith shown (crosses each 10°). Centered at Mirfak (α Persei), 89° to the left from N, at 61° height. The brightest star is Capella. Map vertical size 50° . *Jan Hollan, CzechGlobe*



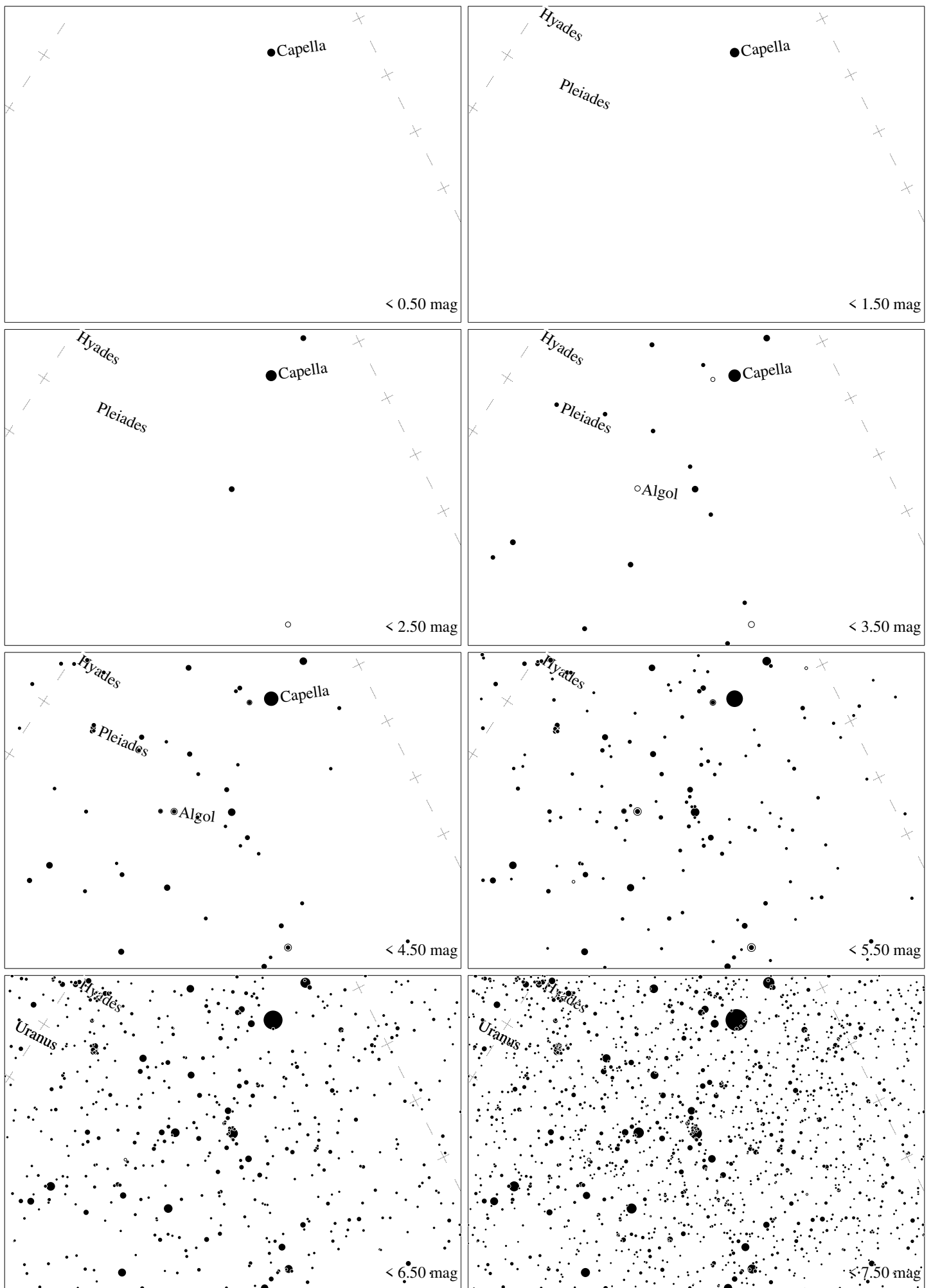
Maps for Globe at Night latitude 50° , 2026-02-14, 21 h local time (Sun at -36°), transparent air. Lines from N(E,S,W) to zenith shown (crosses each 10°). Centered at Mirfak (α Persei), 71° to the left from N, at 59° height. The brightest star is Capella. Map vertical size 50° . *Jan Hollan, CzechGlobe*



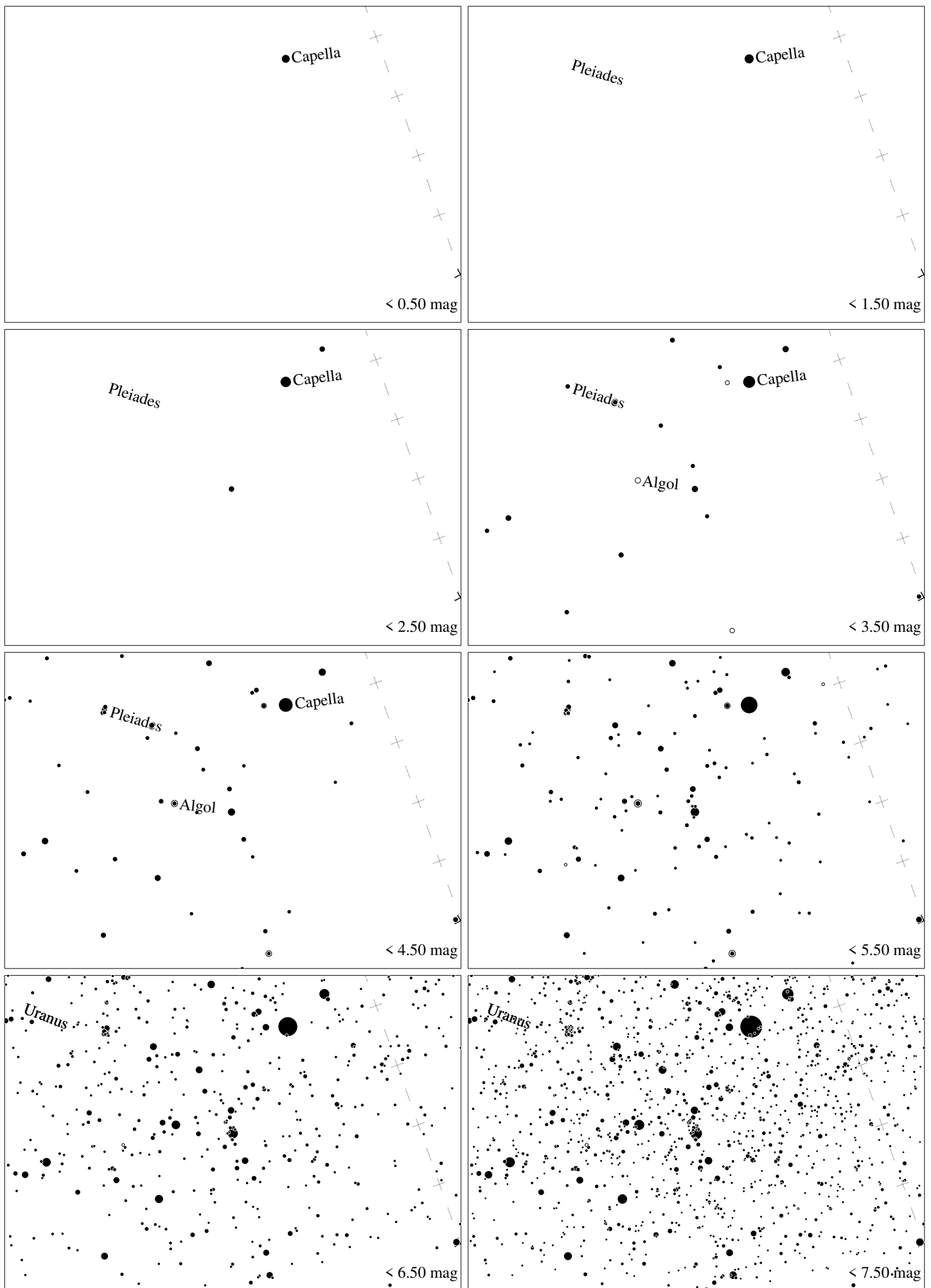
Maps for Globe at Night latitude 40°, 2026-02-14, 21 h local time (Sun at -40°), transparent air. Lines from N(E,S,W) to zenith shown (crosses each 10°). Centered at Mirfak (α Persei), 57° to the left from N, at 55° height. The brightest star is Capella. Map vertical size 50° . *Jan Hollan, CzechGlobe*



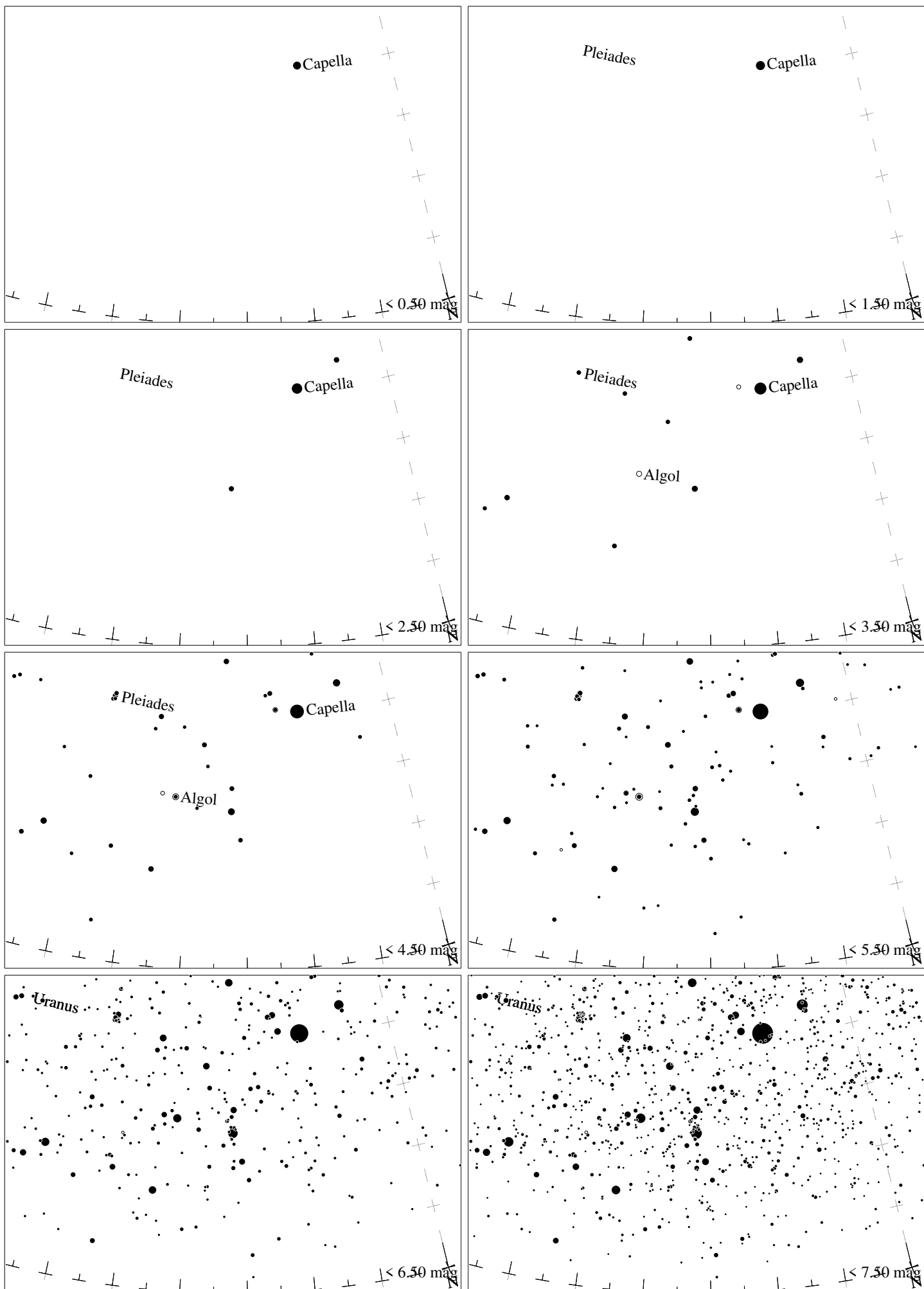
Maps for Globe at Night latitude 30° , 2026-02-14, 21 h local time (Sun at -42°), transparent air. Lines from N(E,S,W) to zenith shown (crosses each 10°). Centered at Mirfak (α Persei), 47° to the left from N, at 49° height. The brightest star is Capella. Map vertical size 50° . *Jan Hollan, CzechGlobe*



Maps for Globe at Night latitude 20° , 2026-02-14, 21 h local time (Sun at -43°), transparent air. Lines from N(E,S,W) to zenith shown (crosses each 10°). Centered at Mirfak (α Persei), 40° to the left from N, at 42° height. The brightest star is Capella. Map vertical size 50° . *Jan Hollan, CzechGlobe*



Maps for Globe at Night latitude 10°, 2026-02-14, 21 h local time (Sun at -42°), transparent air. Lines from N(E,S,W) to zenith shown (crosses each 10°). Centered at Mirfak (α Persei), 35° to the left from N, at 34° height. The brightest star is Capella. Map vertical size 50°. *Jan Hollan, CzechGlobe*



Maps for Globe at Night latitude 0° , 2026-02-14, 21 h local time (Sun at -40°), transparent air. Lines from N(E,S,W) to zenith shown (crosses each 10°). Centered at Mirfak (α Persei), 32° to the left from N, at 25° height. The brightest star is Capella. Map vertical size 50° . *Jan Hollan, CzechGlobe*