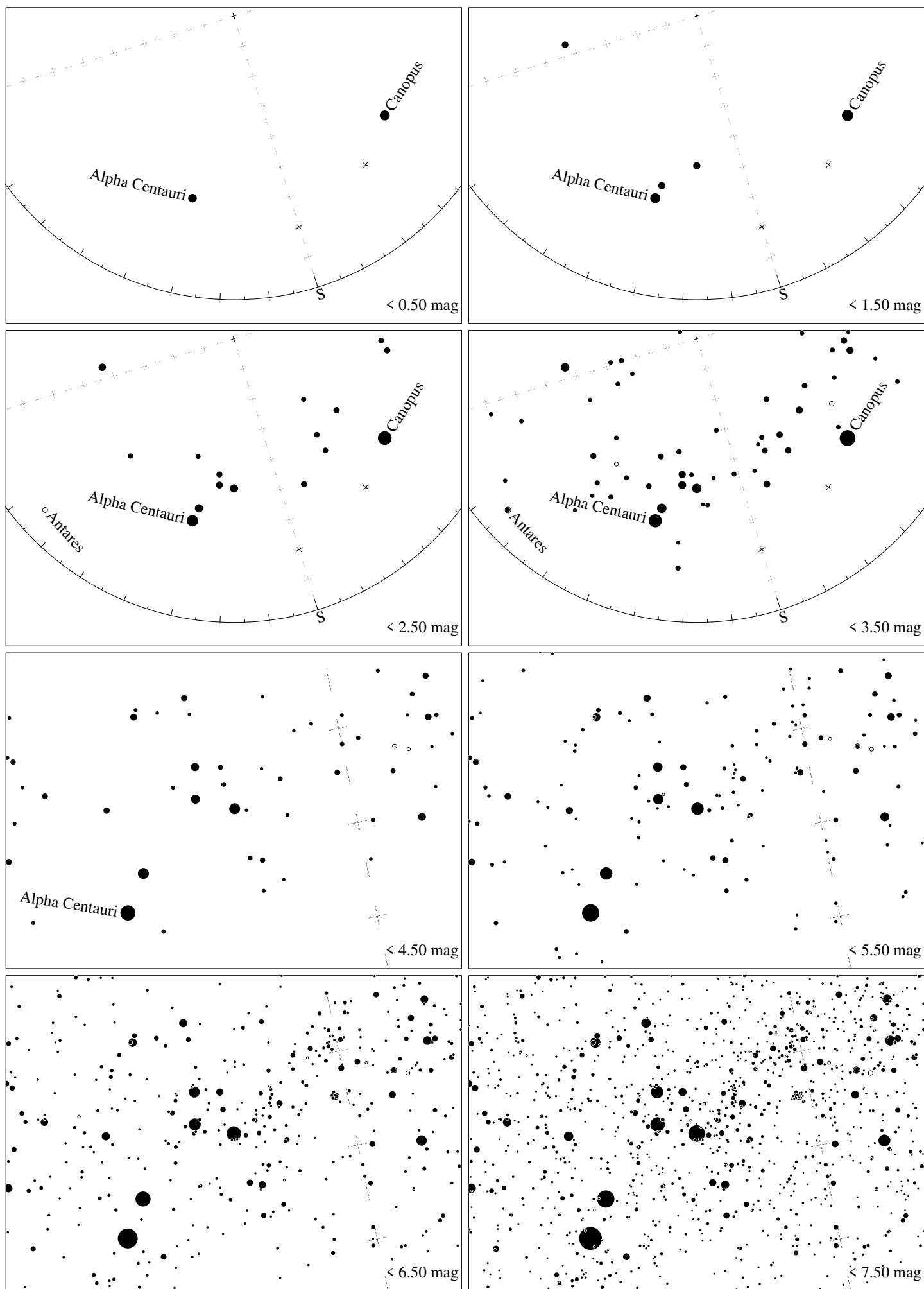
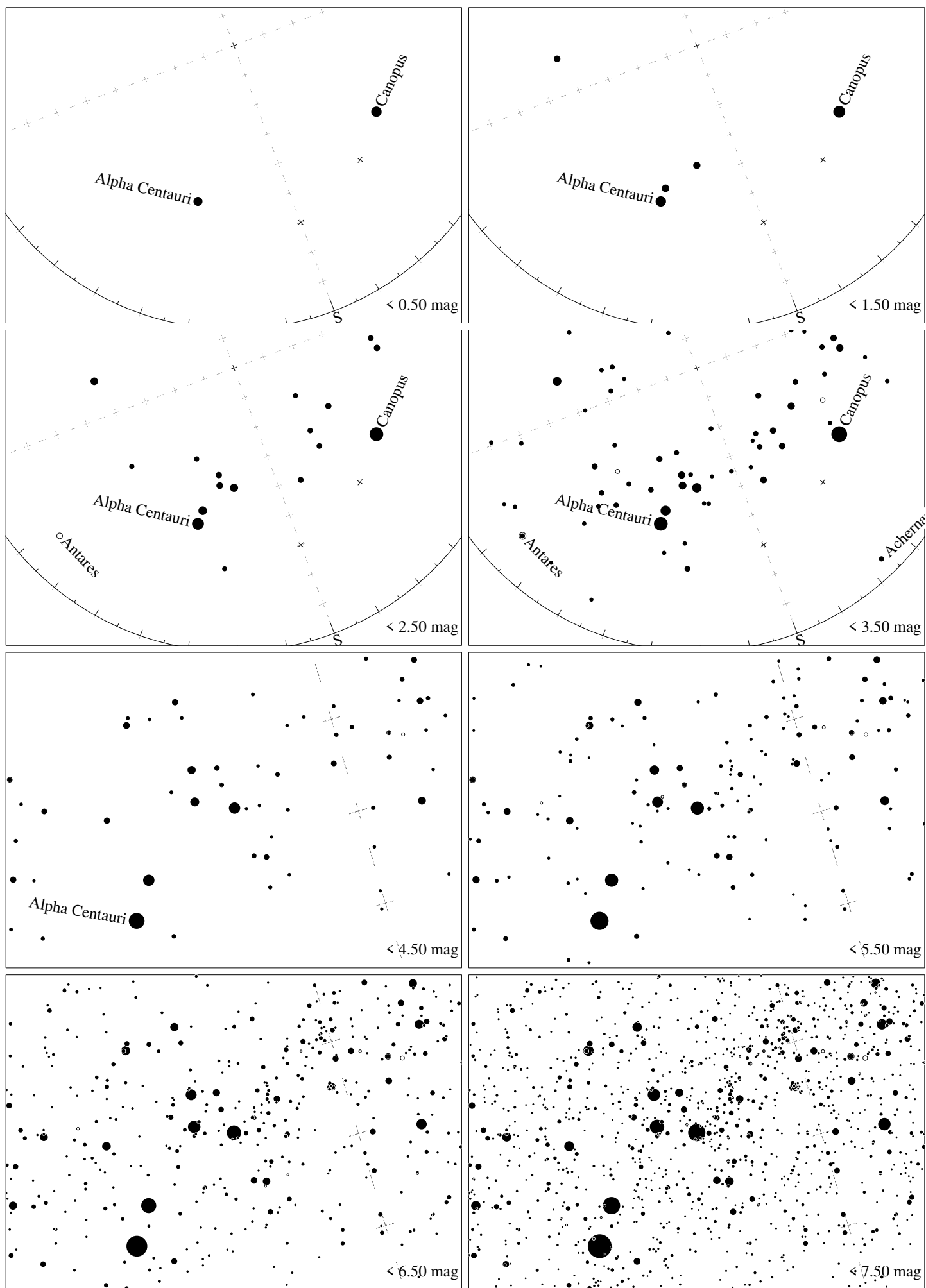


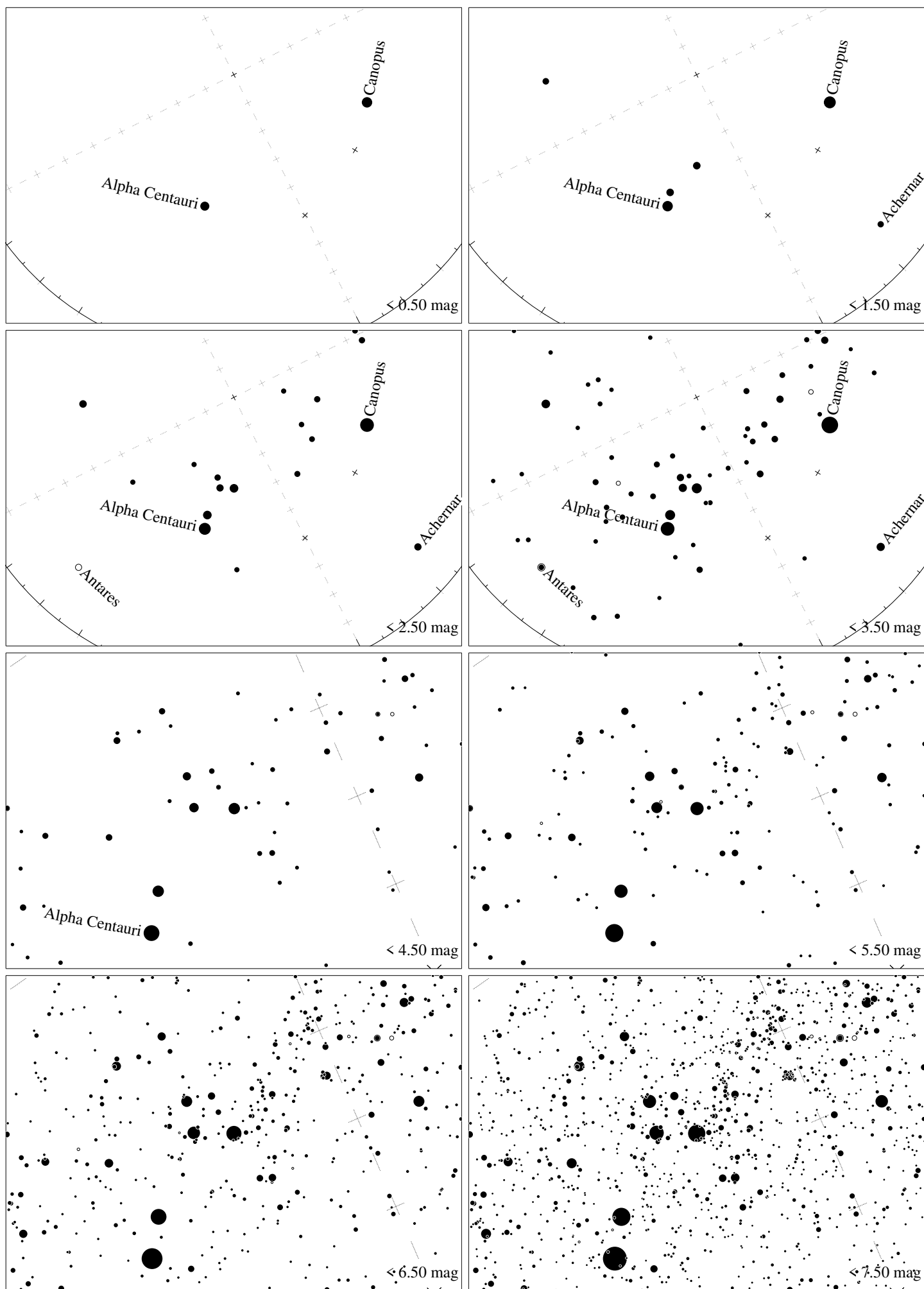
Maps for Globe at Night latitude -10° , 2026-04-14, 21 h local time (Sun at -46°), transparent air. Central star Acrux (the brightest one in the Cross) is 15° left from the south, at 33° height. Detailed maps 33° vertically, the first four maps 100° . *Jan Hollan, CzechGlobe*



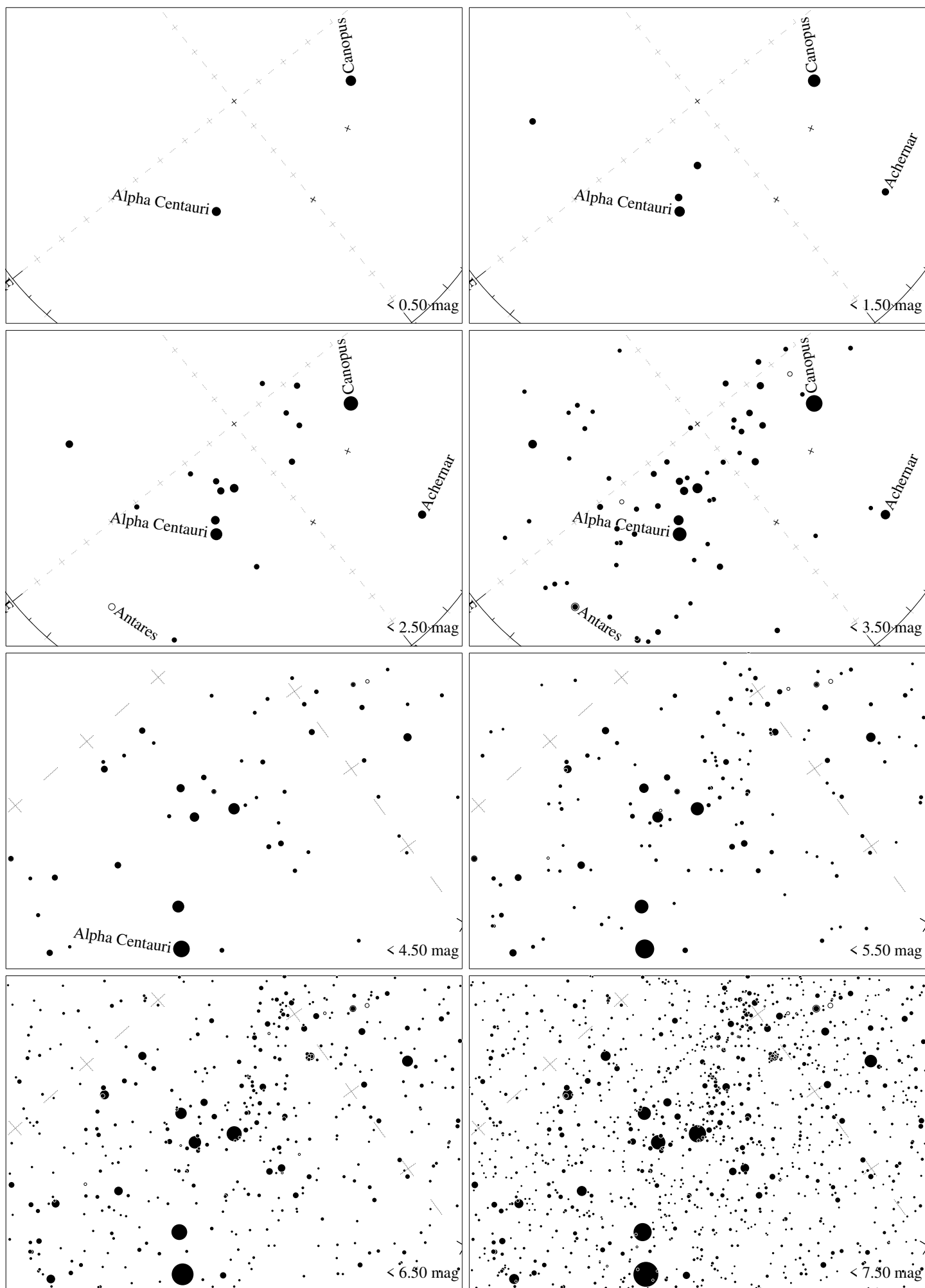
Maps for Globe at Night latitude -20° , 2026-04-14, 21 h local time (Sun at -45°), transparent air. Central star Acrux (the brightest one in the Cross) is 17° left from the south, at 43° height. Detailed maps 33° vertically, the first four maps 100° . *Jan Hollan, CzechGlobe*



Maps for Globe at Night latitude -30° , 2026-04-14, 21 h local time (Sun at -43°), transparent air. Central star Acrux (the brightest one in the Cross) is 21° left from the south, at 52° height. Detailed maps 33° vertically, the first four maps 100° . *Jan Hollan, CzechGlobe*



Maps for Globe at Night latitude -40° , 2026-04-14, 21 h local time (Sun at -40°), transparent air. Central star Acrux (the brightest one in the Cross) is 27° left from the south, at 61° height. Detailed maps 33° vertically, the first four maps 100° . *Jan Hollan, CzechGlobe*



Maps for Globe at Night latitude -50° , 2026-04-14, 21 h local time (Sun at -35°), transparent air. Central star Acrux (the brightest one in the Cross) is 39° left from the south, at 70° height. Detailed maps 33° vertically, the first four maps 100° . *Jan Hollan, CzechGlobe*