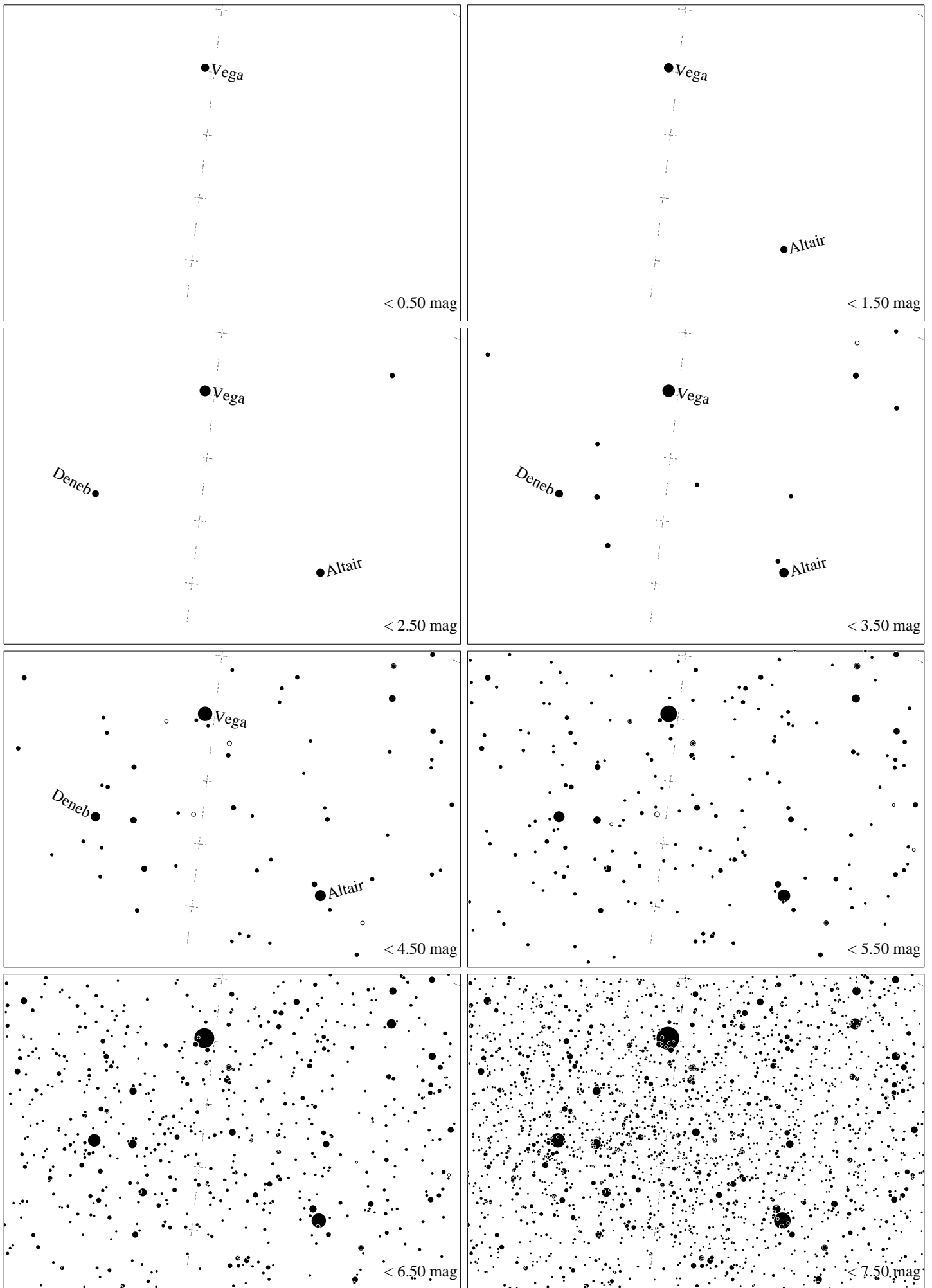
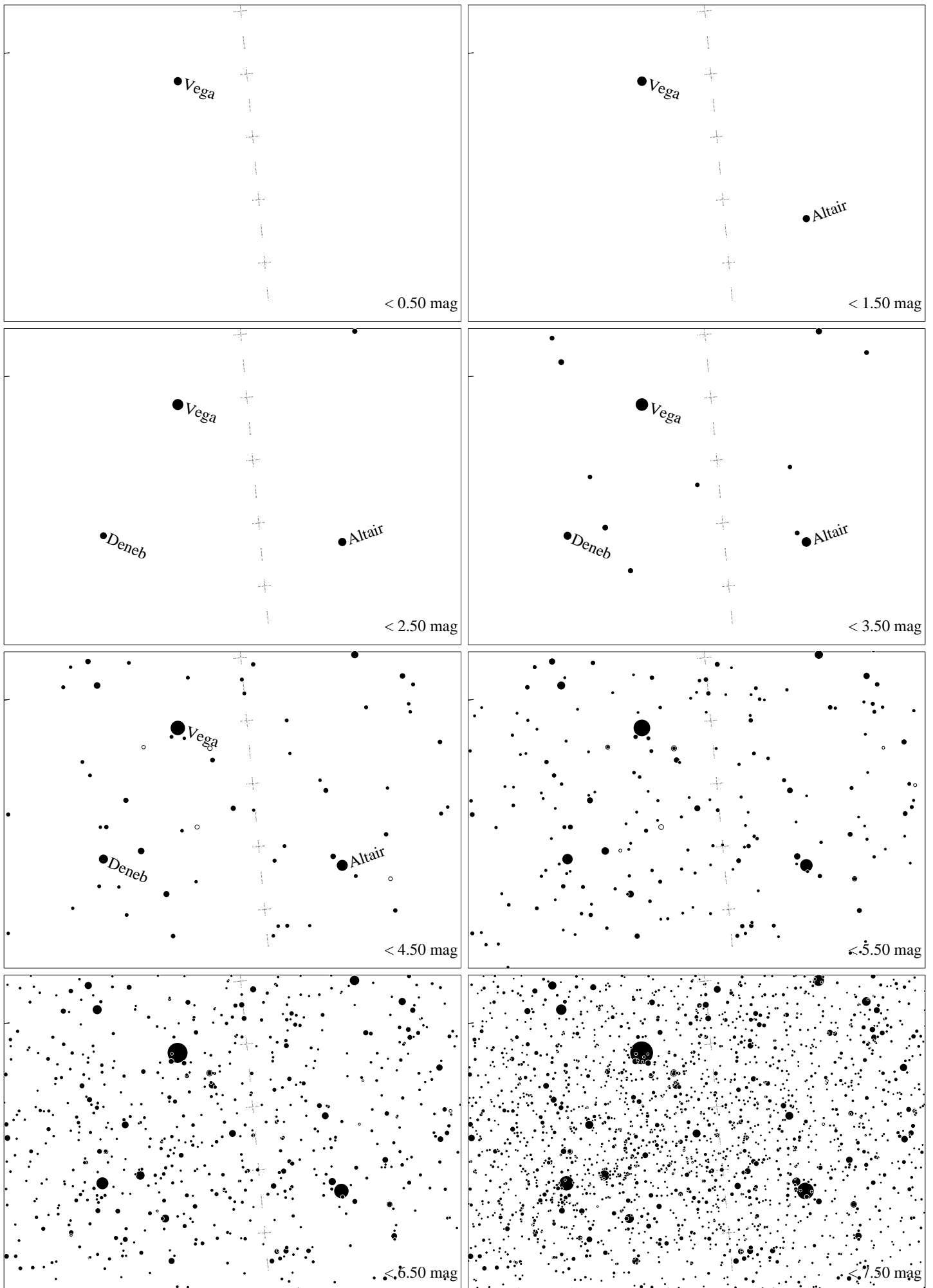


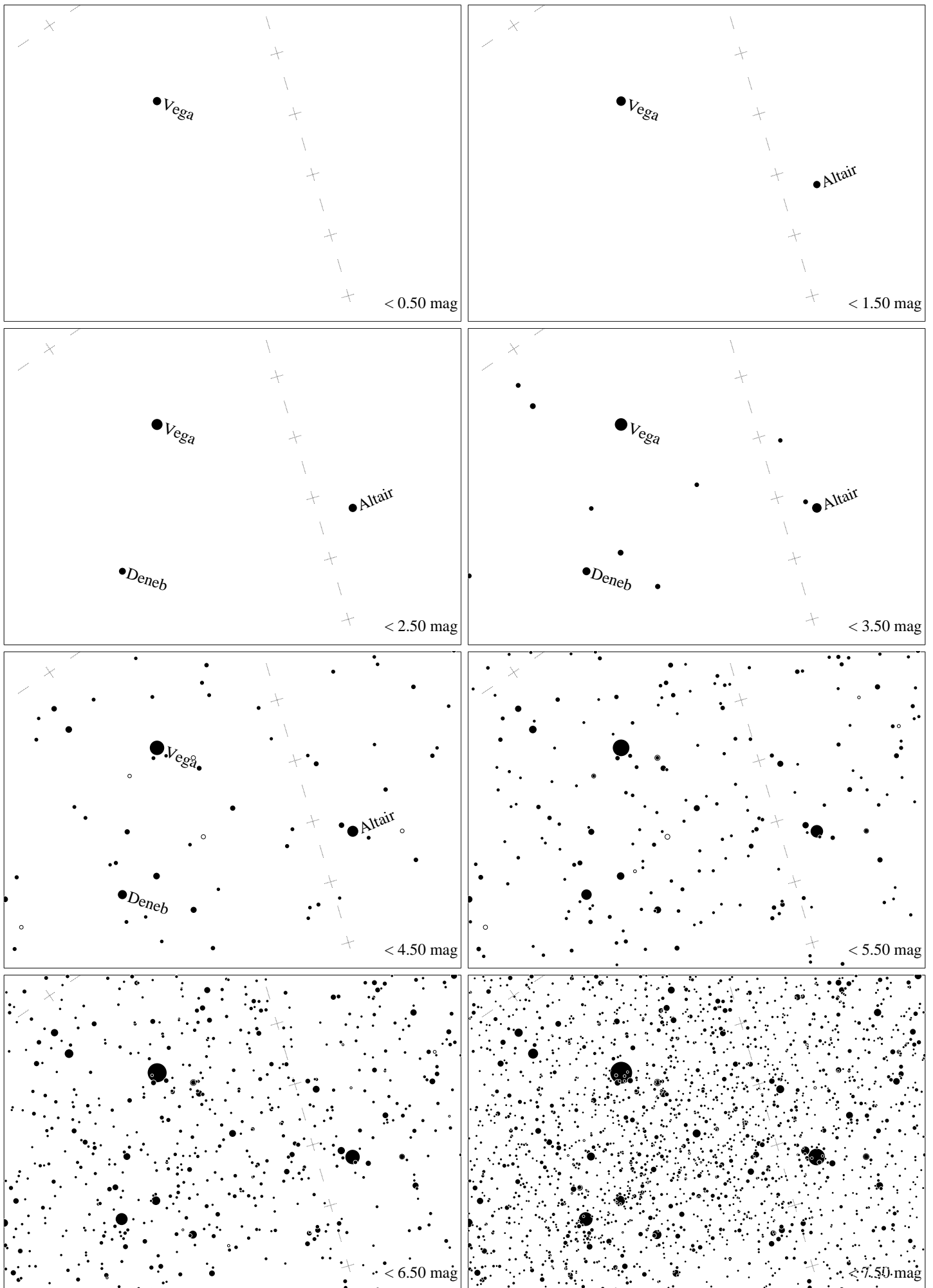
Maps for Globe at Night latitude  $50^\circ$ , 2025-07-20, 22 h local time (Sun at  $-14^\circ$ ), transparent air. Lines from N(E,S,W) to zenith shown (crosses each  $10^\circ$ ). Centered on Albireo ( $\beta$  Cygni),  $49^\circ$  to the left from S, at  $61^\circ$  height, near the centre of Summer Triangle. Map vertical size is  $50^\circ$ . *Jan Hollan, CzechGlobe*



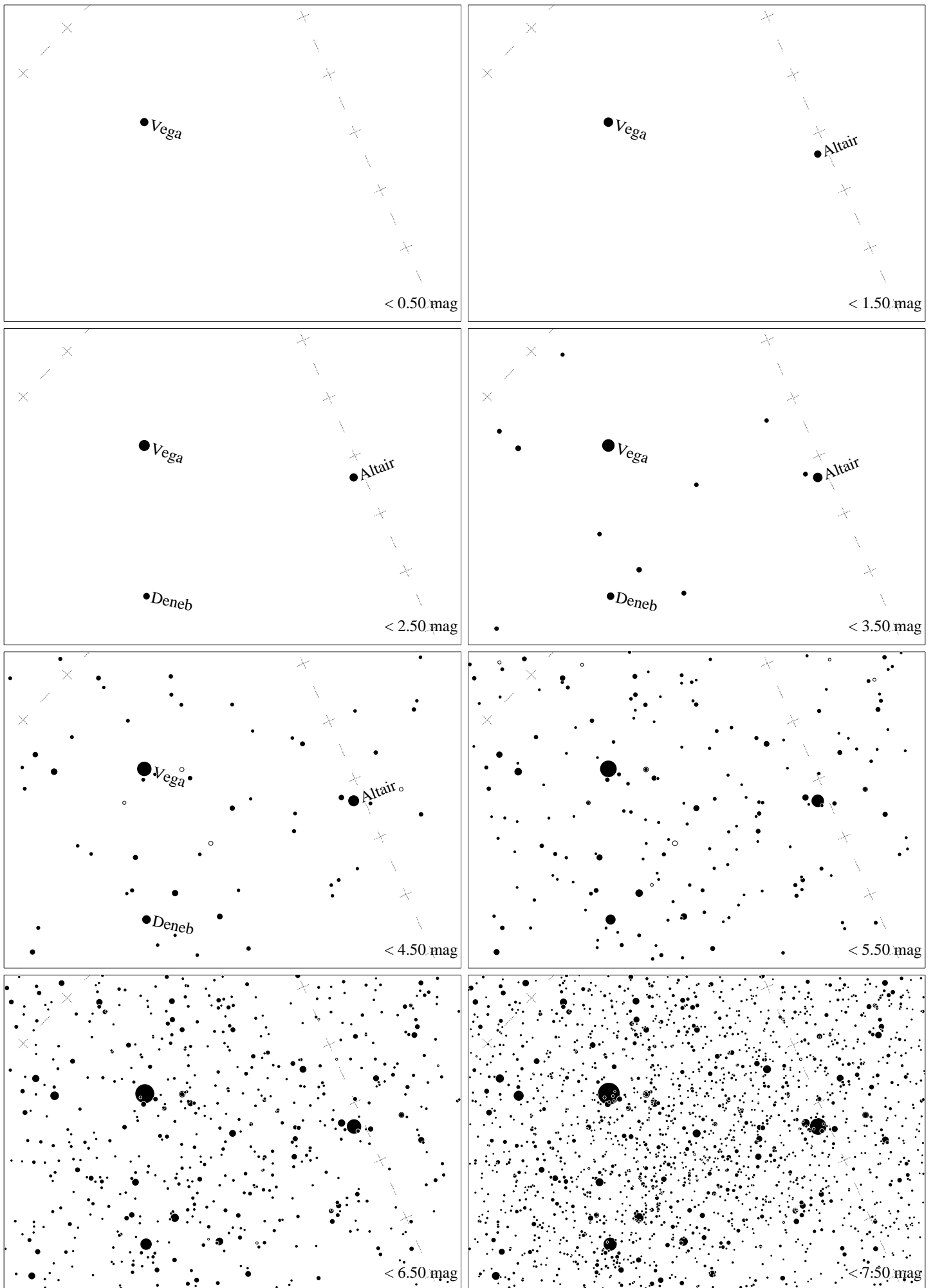
Maps for Globe at Night latitude  $40^\circ$ , 2025-07-20, 21 h local time (Sun at  $-16^\circ$ ), transparent air. Lines from N(E,S,W) to zenith shown (crosses each  $10^\circ$ ). Centered on Albireo ( $\beta$  Cygni),  $82^\circ$  to the left from S, at  $56^\circ$  height, near the centre of Summer Triangle. Map vertical size is  $50^\circ$ . *Jan Hollan, CzechGlobe*



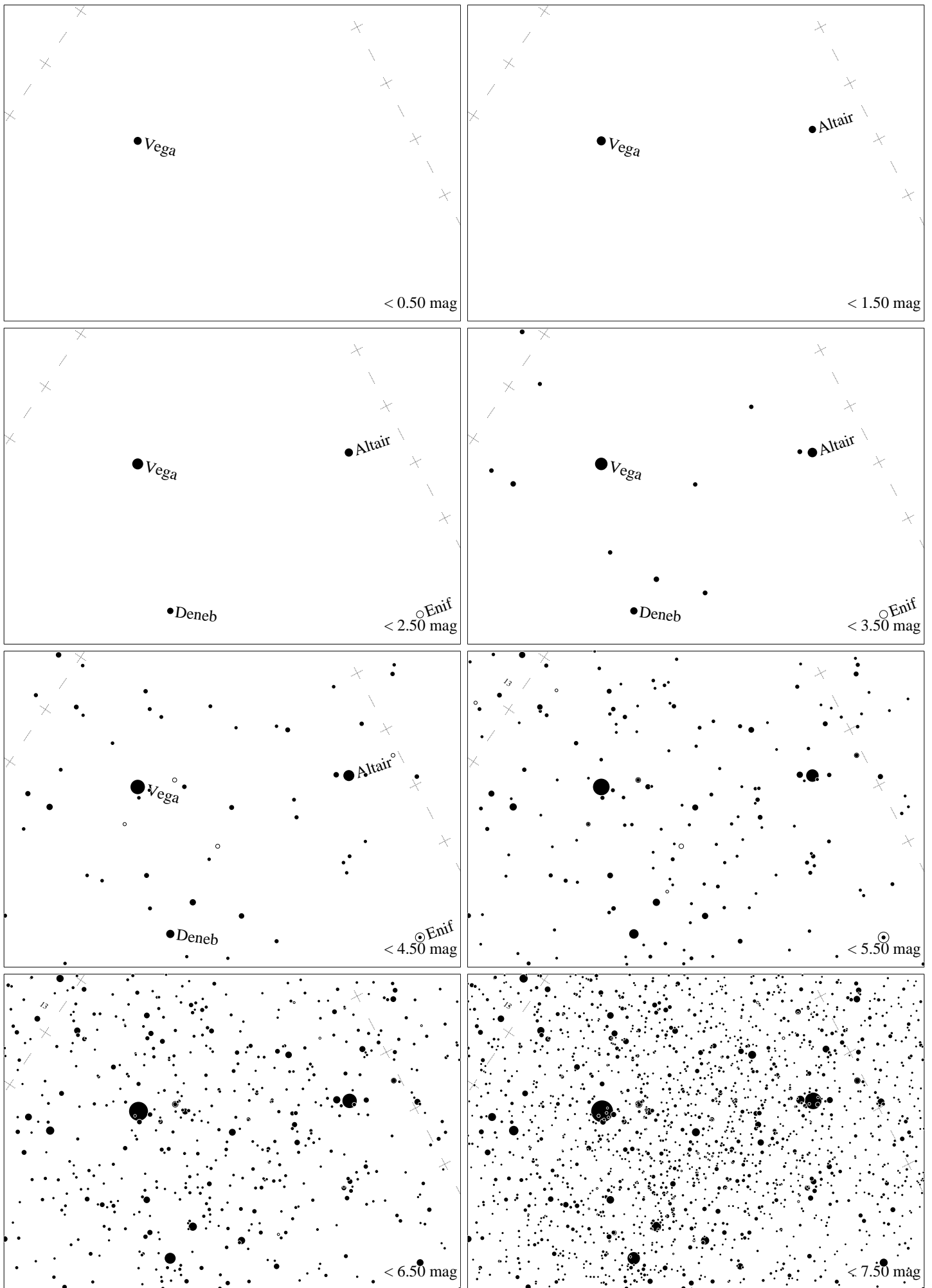
Maps for Globe at Night latitude  $30^\circ$ , 2025-07-20, 21 h local time (Sun at  $-22^\circ$ ), transparent air. Lines from N(E,S,W) to zenith shown (crosses each  $10^\circ$ ). Centered on Albireo ( $\beta$  Cygni),  $83^\circ$  to the right from N, at  $56^\circ$  height, near the centre of Summer Triangle. Map vertical size is  $50^\circ$ . *Jan Hollan, CzechGlobe*



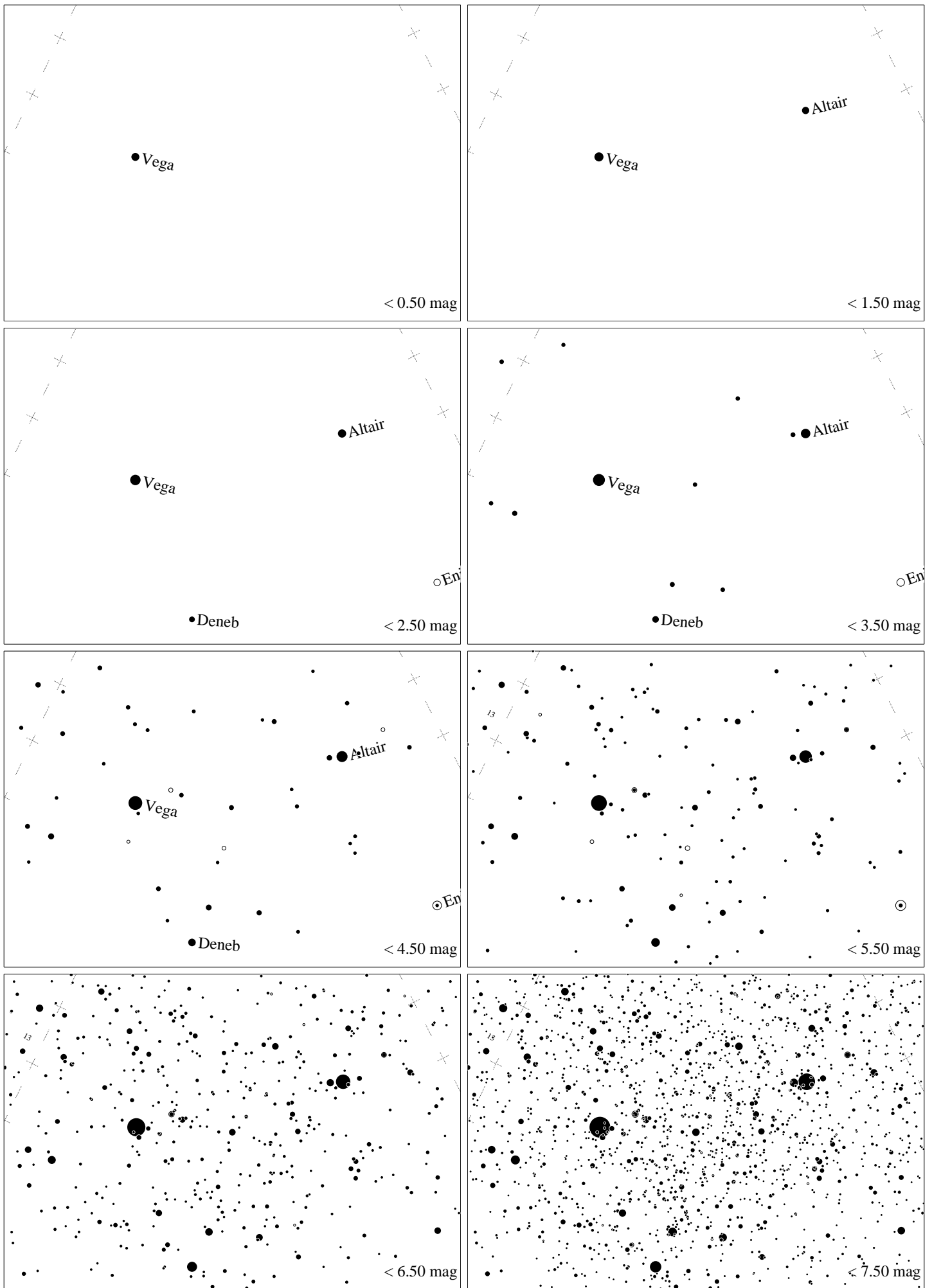
Maps for Globe at Night latitude  $20^\circ$ , 2025-07-20, 21 h local time (Sun at  $-29^\circ$ ), transparent air. Lines from N(E,S,W) to zenith shown (crosses each  $10^\circ$ ). Centered on Albireo ( $\beta$  Cygni),  $70^\circ$  to the right from N, at  $54^\circ$  height, near the centre of Summer Triangle. Map vertical size is  $50^\circ$ . *Jan Hollan, CzechGlobe*



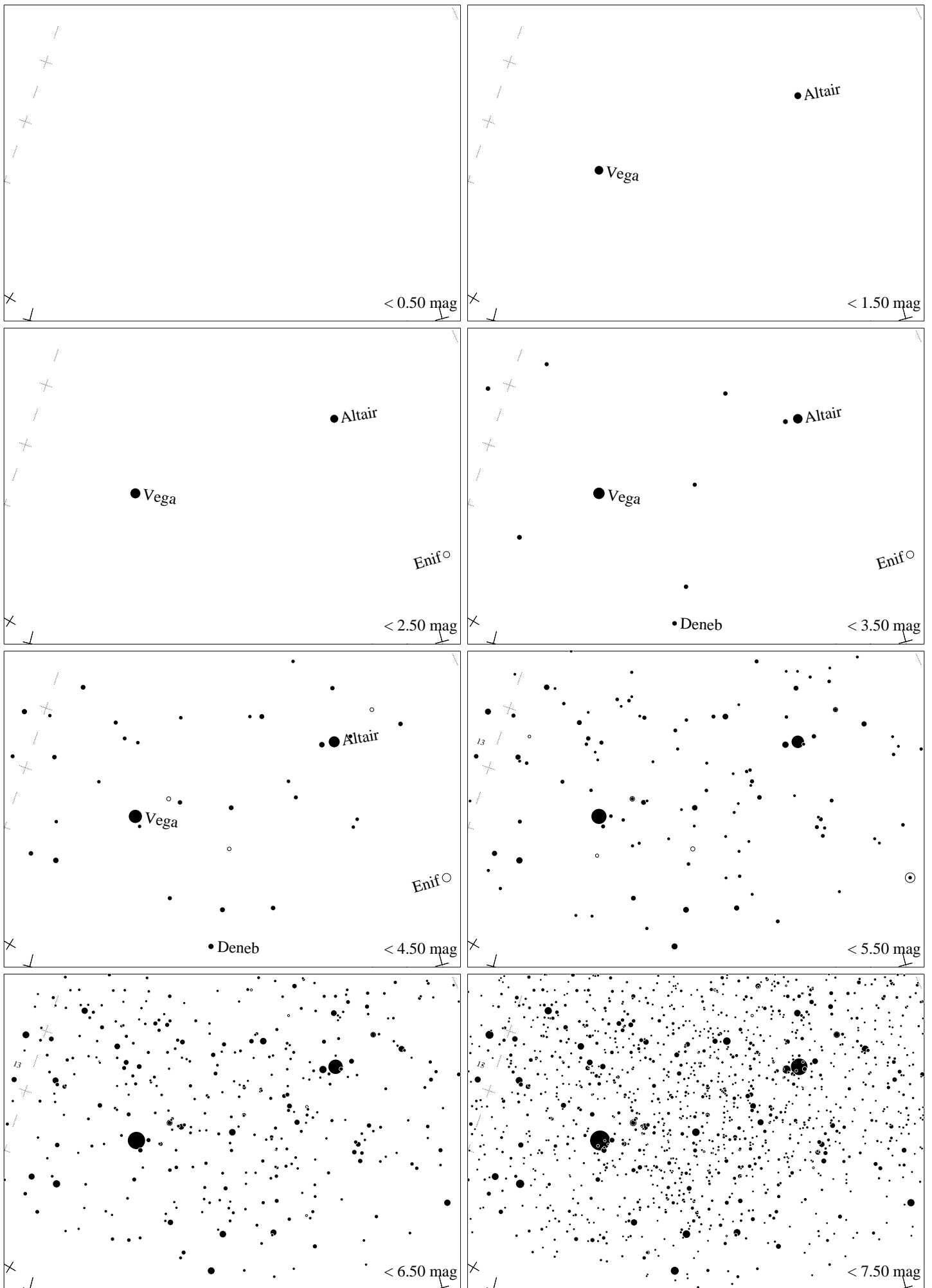
Maps for Globe at Night latitude  $10^\circ$ , 2025-07-20, 21 h local time (Sun at  $-35^\circ$ ), transparent air. Lines from N(E,S,W) to zenith shown (crosses each  $10^\circ$ ). Centered on Albireo ( $\beta$  Cygni),  $58^\circ$  to the right from N, at  $49^\circ$  height, near the centre of Summer Triangle. Map vertical size is  $50^\circ$ . *Jan Hollan, CzechGlobe*



Maps for Globe at Night latitude  $0^\circ$ , 2025-07-20, 21 h local time (Sun at  $-40^\circ$ ), transparent air. Lines from N(E,S,W) to zenith shown (crosses each  $10^\circ$ ). Centered on Albireo ( $\beta$  Cygni),  $50^\circ$  to the right from N, at  $43^\circ$  height, near the centre of Summer Triangle. Map vertical size is  $50^\circ$ . *Jan Hollan, CzechGlobe*

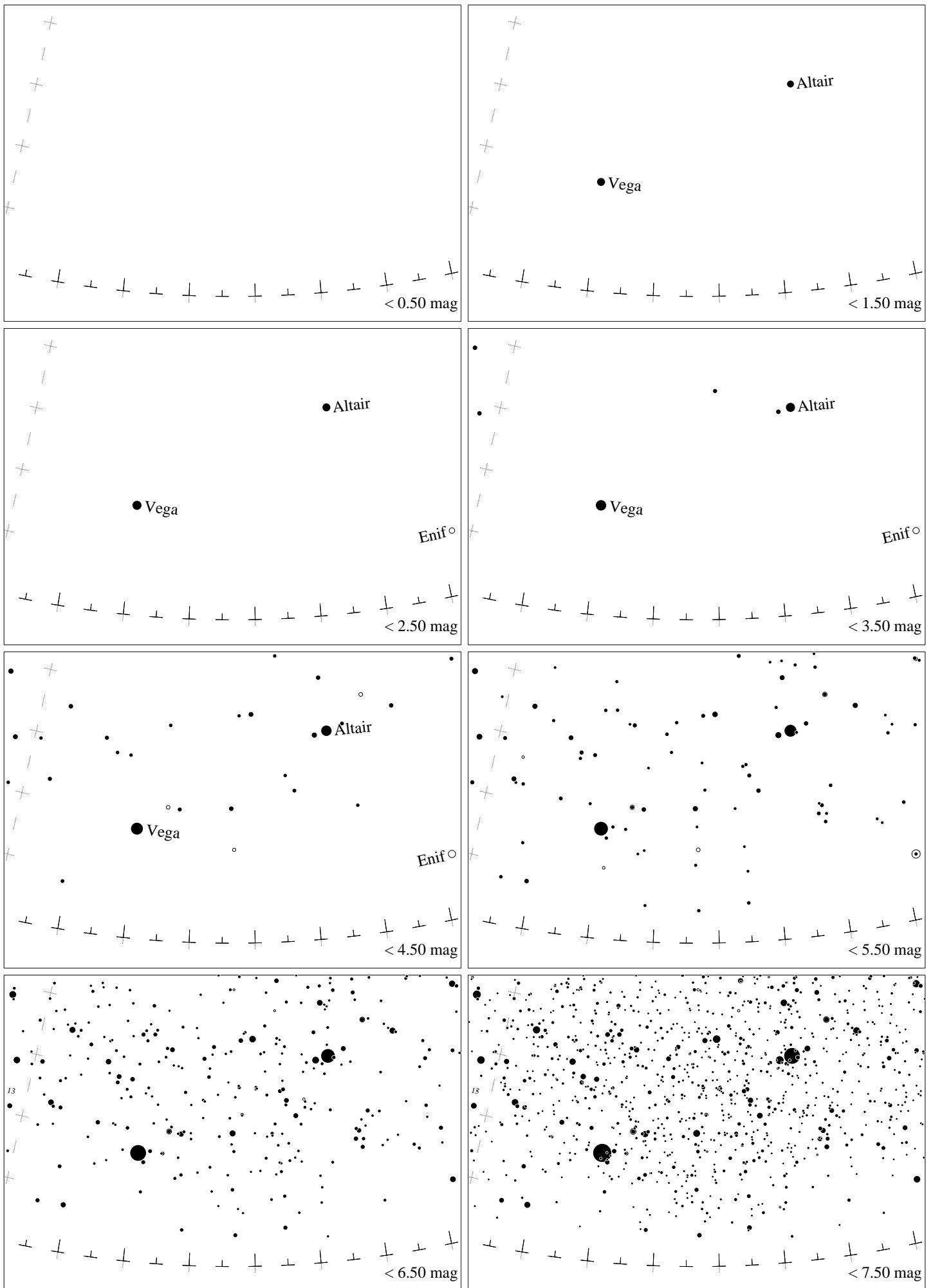


Maps for Globe at Night latitude  $-10^\circ$ , 2025-07-20, 21 h local time (Sun at  $-44^\circ$ ), transparent air. Lines from N(E,S,W) to zenith shown (crosses each  $10^\circ$ ). Centered on Albireo ( $\beta$  Cygni),  $44^\circ$  to the right from N, at  $36^\circ$  height, near the centre of Summer Triangle. Map vertical size is  $50^\circ$ . *Jan Hollan, CzechGlobe*



Maps for Globe at Night latitude  $-20^\circ$ , 2025-07-20, 21 h local time (Sun at  $-46^\circ$ ), transparent air. Lines from N(E,S,W) to zenith shown (crosses each  $10^\circ$ ). Centered on Albireo ( $\beta$  Cygni),  $39^\circ$  to the right from N, at  $29^\circ$  height, near the centre of Summer Triangle. Map vertical size is  $50^\circ$ . *Jan Hollan, CzechGlobe*





Maps for Globe at Night latitude  $-30^\circ$ , 2025-07-20, 21 h local time (Sun at  $-47^\circ$ ), transparent air. Lines from N(E,S,W) to zenith shown (crosses each  $10^\circ$ ). Centered on Albireo ( $\beta$  Cygni),  $37^\circ$  to the right from N, at  $21^\circ$  height, near the centre of Summer Triangle. Map vertical size is  $50^\circ$ . *Jan Hollan, CzechGlobe*