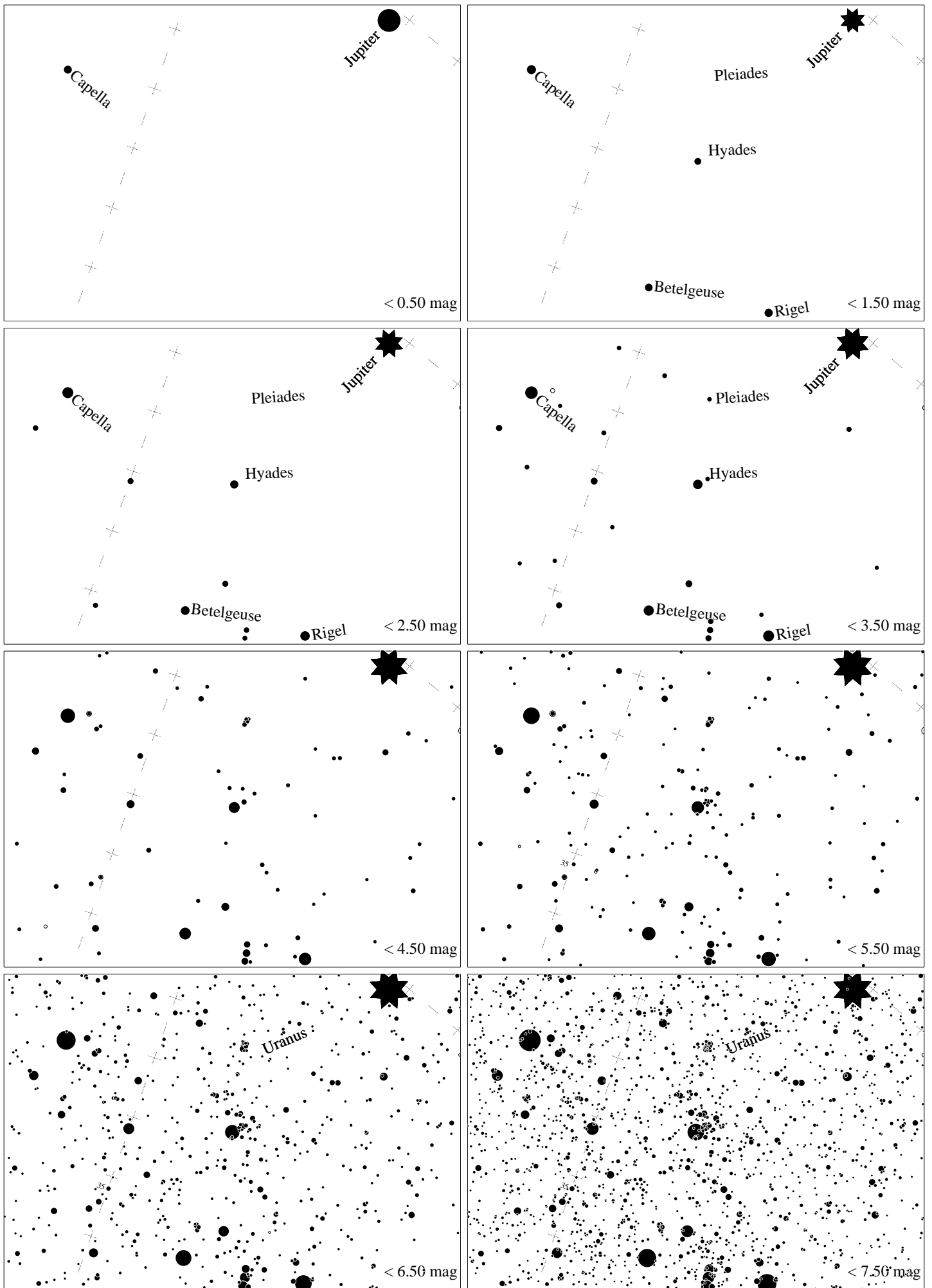


Maps for Globe at Night at latitude  $40^\circ$ , 2023-01-18, 21 h local time (Sun at  $-45^\circ$ ), transparent air. Lines from N(E,S,W) to zenith shown (crosses each  $10^\circ$ ). Aldebaran is  $9^\circ$  to the right from S, at  $66^\circ$  height. Star cluster M35 marked when appropriate. Map vertical size is  $50^\circ$ . *Jan Hollan maps, CzechGlobe*



Maps for Globe at Night at latitude  $40^\circ$ , 2023-12-08, 21 h local time (Sun at  $-50^\circ$ ), transparent air. Lines from N(E,S,W) to zenith shown (crosses each  $10^\circ$ ). Aldebaran is  $65^\circ$  to the left from S, at  $50^\circ$  height. Star cluster M35 marked when appropriate. Map vertical size is  $50^\circ$ . *Jan Hollan maps, CzechGlobe*