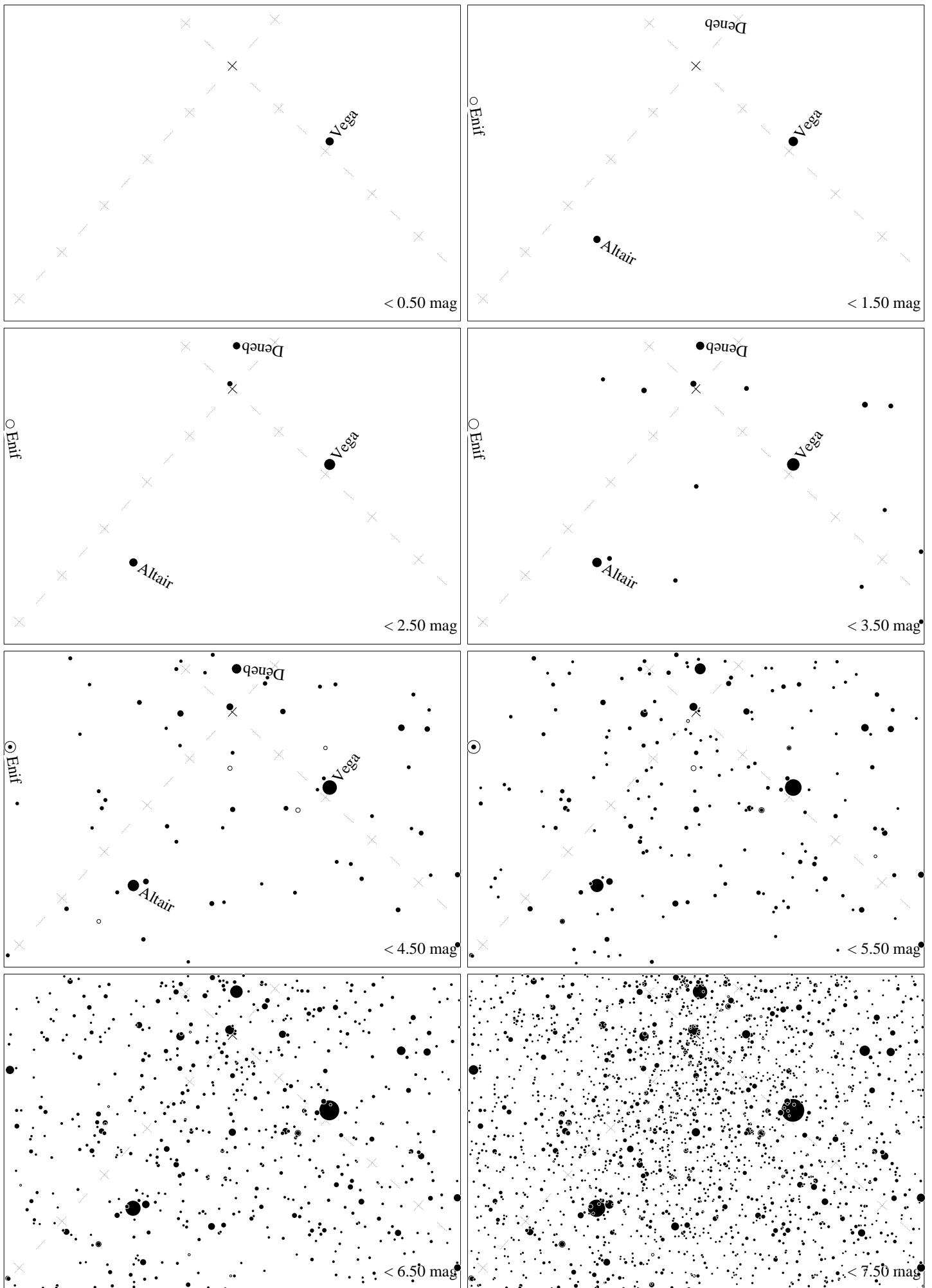
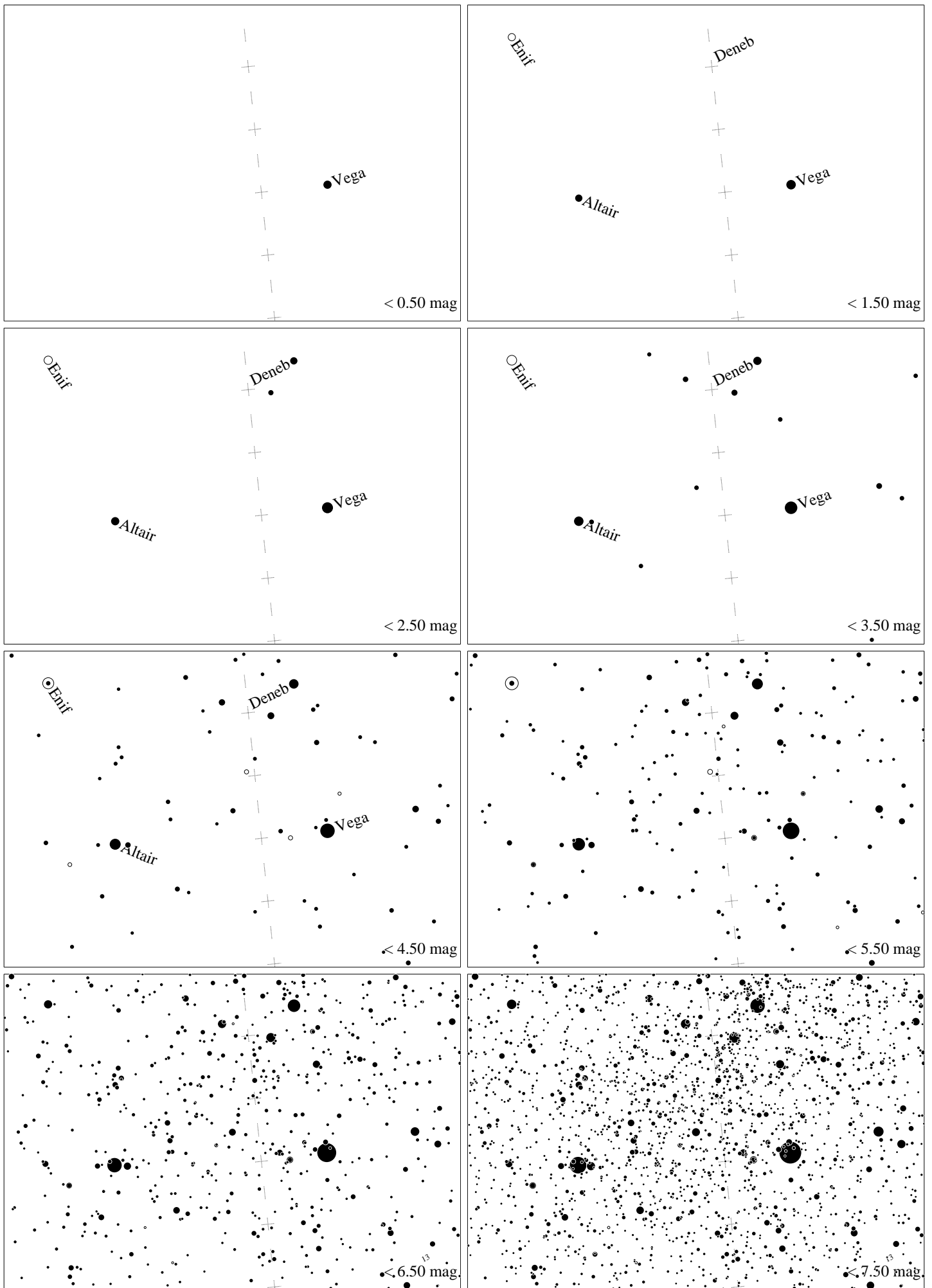


Maps for Globe at Night latitude  $40^\circ$ , 2023-08-12, 21 h local time (Sun at  $-20^\circ$ ), transparent air. Lines from N(E,S,W) to zenith shown (crosses each  $10^\circ$ ). Centered on Albireo ( $\beta$  Cygni),  $54^\circ$  to the left from S, at  $72^\circ$  height, near the centre of Summer Triangle. Map vertical size is  $50^\circ$ . *Jan Hollan, CzechGlobe*



Maps for Globe at Night latitude  $40^\circ$ , 2023-09-10, 21 h local time (Sun at  $-30^\circ$ ), transparent air. Lines from N(E,S,W) to zenith shown (crosses each  $10^\circ$ ). Centered on Albireo ( $\beta$  Cygni),  $42^\circ$  to the right from S, at  $75^\circ$  height, near the centre of Summer Triangle. Map vertical size is  $50^\circ$ . *Jan Hollan, CzechGlobe*



Maps for Globe at Night latitude  $40^\circ$ , 2023-10-09, 21 h local time (Sun at  $-40^\circ$ ), transparent air. Lines from N(E,S,W) to zenith shown (crosses each  $10^\circ$ ). Centered on Albireo ( $\beta$  Cygni),  $83^\circ$  to the right from S, at  $55^\circ$  height, near the centre of Summer Triangle. Map vertical size is  $50^\circ$ . *Jan Hollan, CzechGlobe*