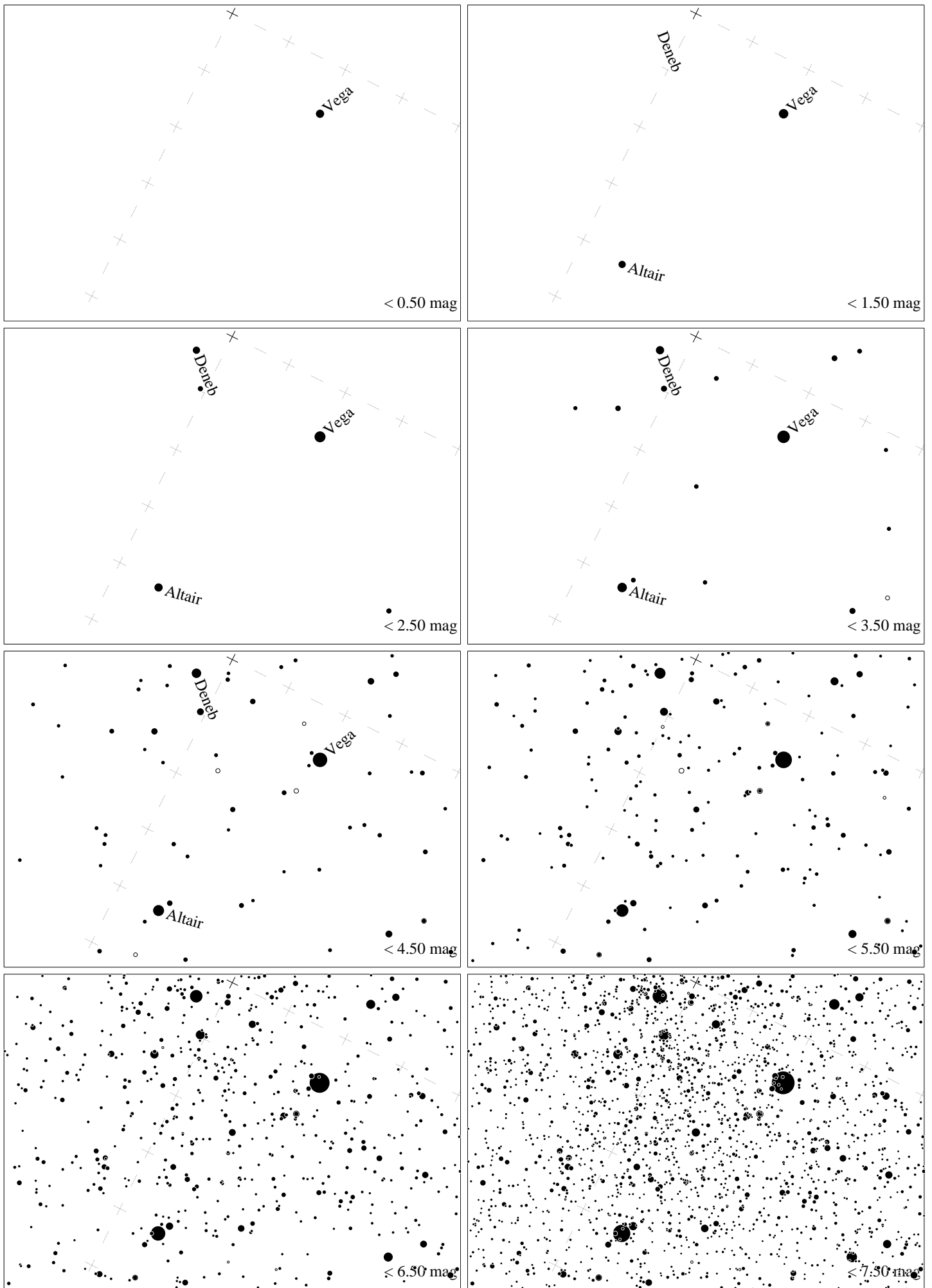
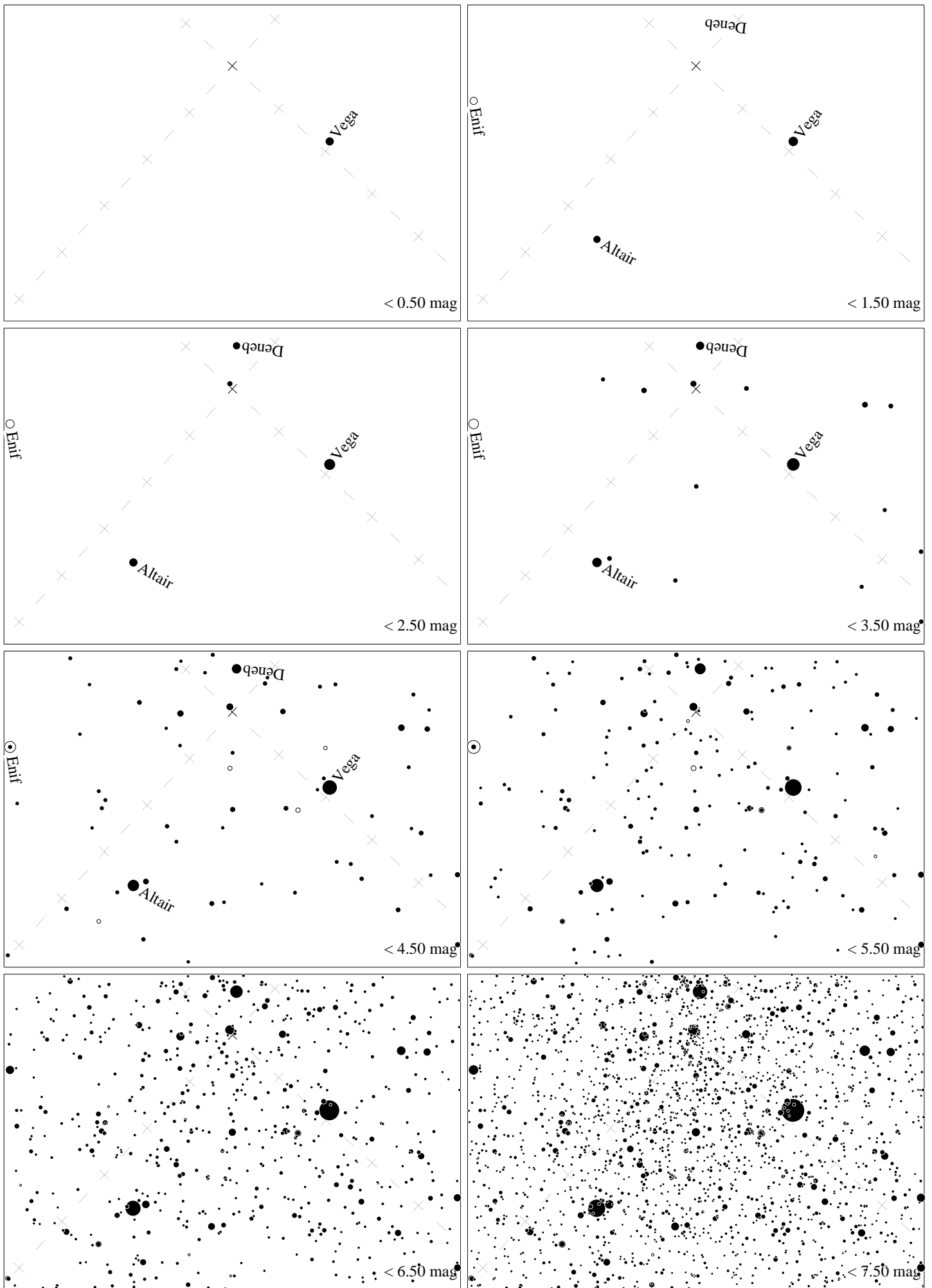


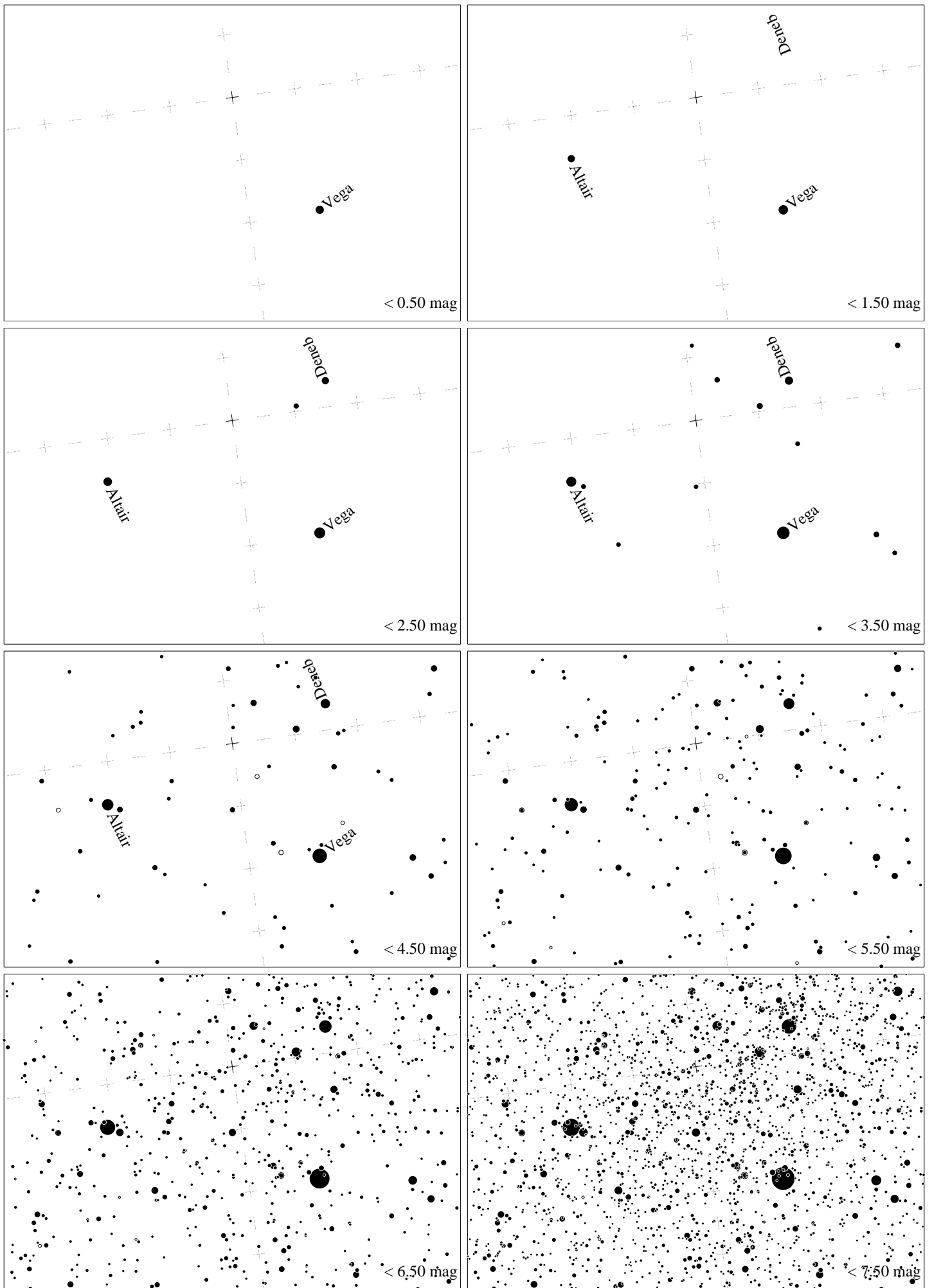
Maps for Globe at Night latitude 60° , 2023-09-10, 21 h local time (Sun at -16°), transparent air. Lines from N(E,S,W) to zenith shown (crosses each 10°). Centered on Albireo (β Cygni), 19° to the right from S, at 57° height, near the centre of Summer Triangle. Map vertical size is 50° . *Jan Hollan, CzechGlobe*



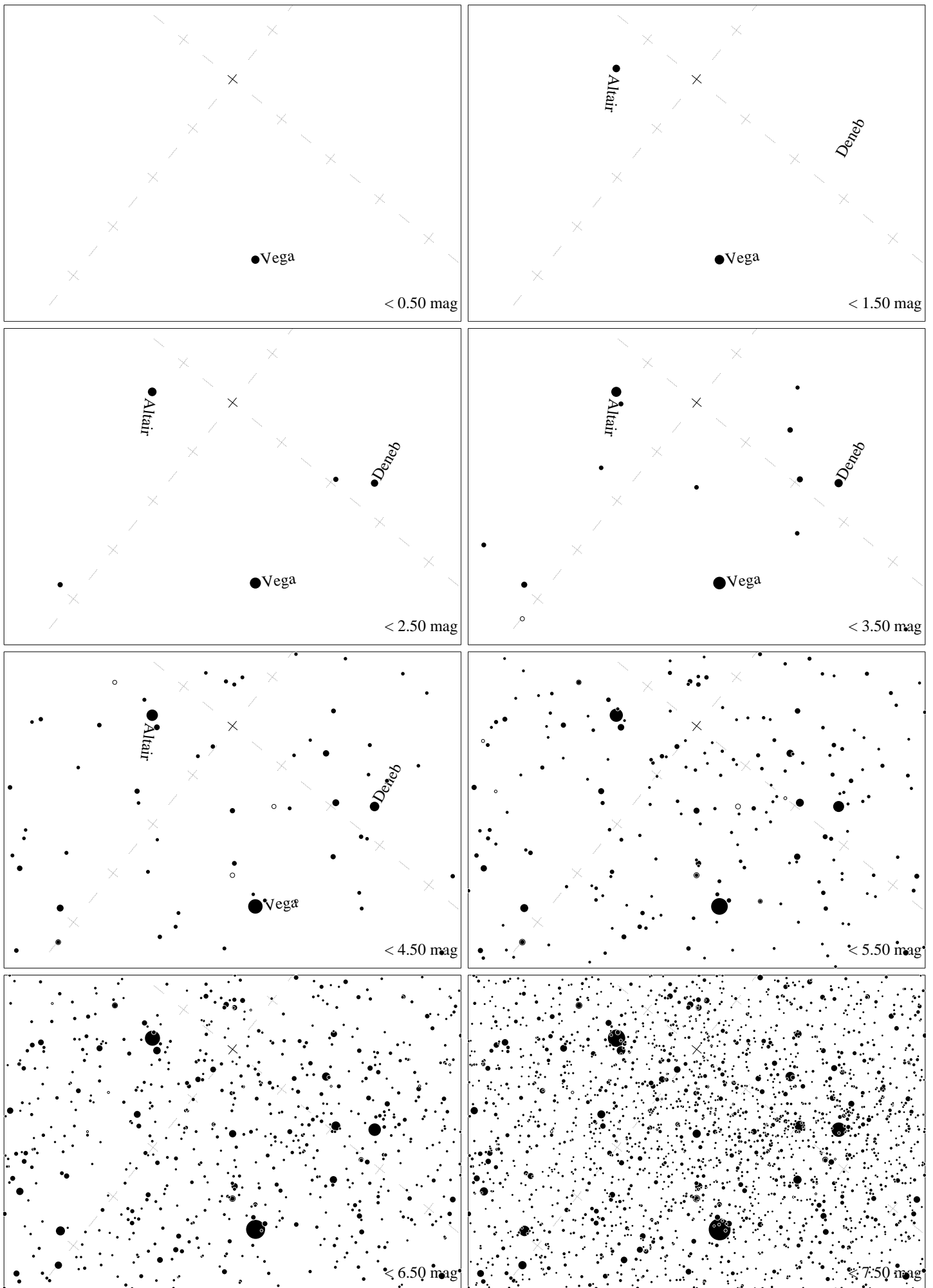
Maps for Globe at Night latitude 50° , 2023-09-10, 21 h local time (Sun at -23°), transparent air. Lines from N(E,S,W) to zenith shown (crosses each 10°). Centered on Albireo (β Cygni), 26° to the right from S, at 66° height, near the centre of Summer Triangle. Map vertical size is 50° . *Jan Hollan, CzechGlobe*



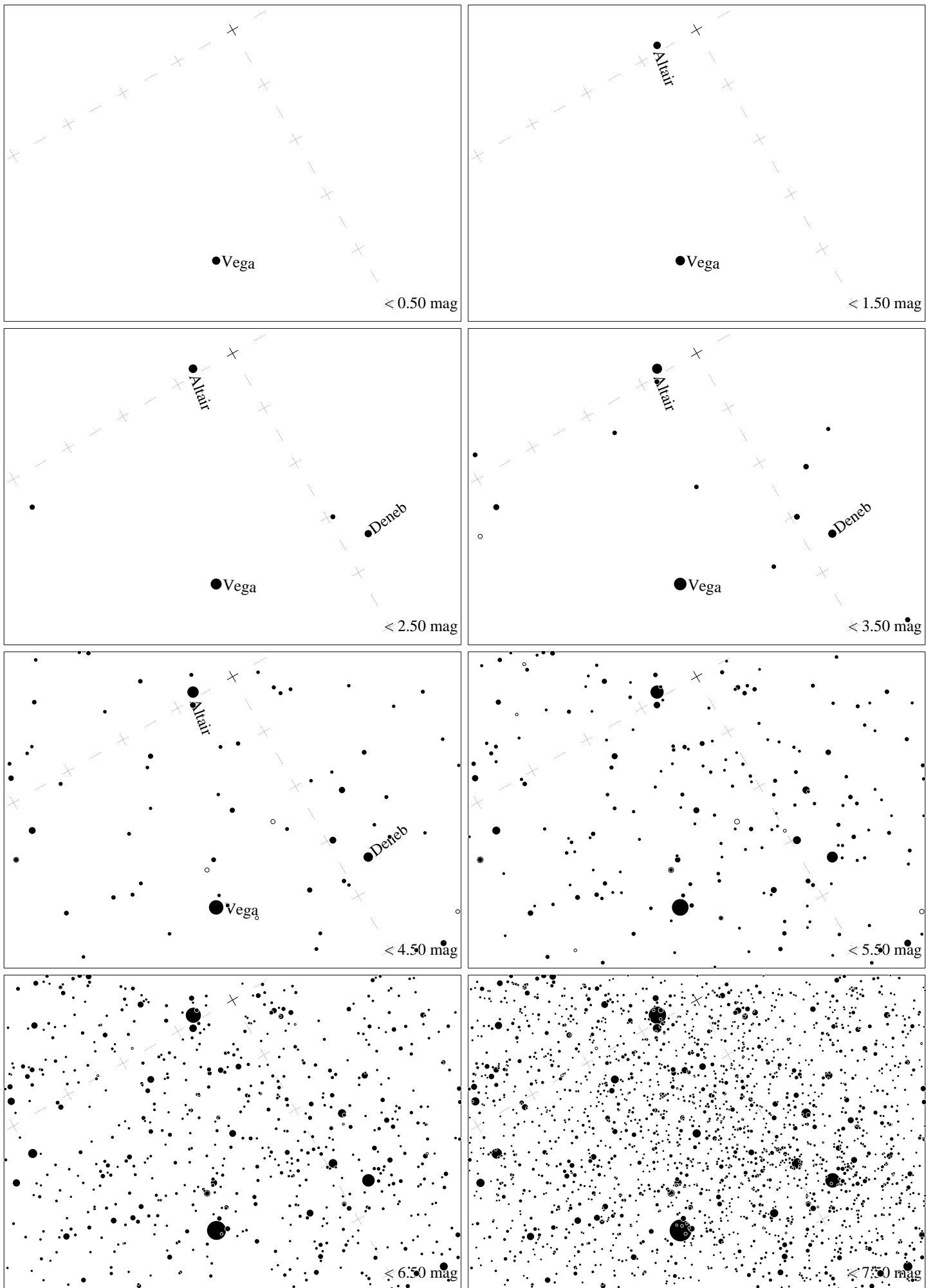
Maps for Globe at Night latitude 40° , 2023-09-10, 21 h local time (Sun at -30°), transparent air. Lines from N(E,S,W) to zenith shown (crosses each 10°). Centered on Albireo (β Cygni), 42° to the right from S, at 75° height, near the centre of Summer Triangle. Map vertical size is 50° . *Jan Hollan, CzechGlobe*



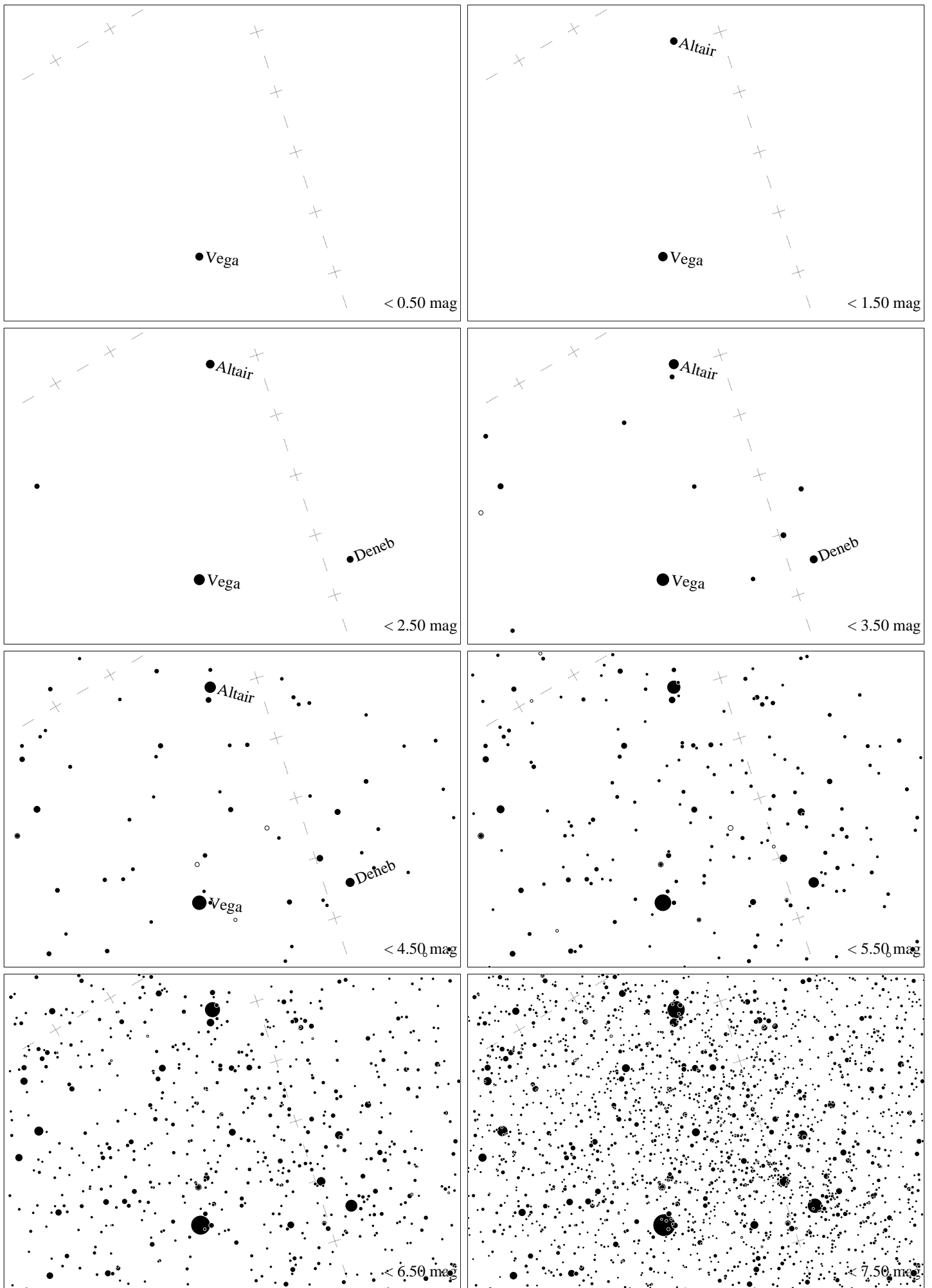
Maps for Globe at Night latitude 30° , 2023-09-10, 21 h local time (Sun at -35°), transparent air. Lines from N(E,S,W) to zenith shown (crosses each 10°). Centered on Albireo (β Cygni), 82° to the right from S, at 80° height, near the centre of Summer Triangle. Map vertical size is 50° . *Jan Hollan, CzechGlobe*



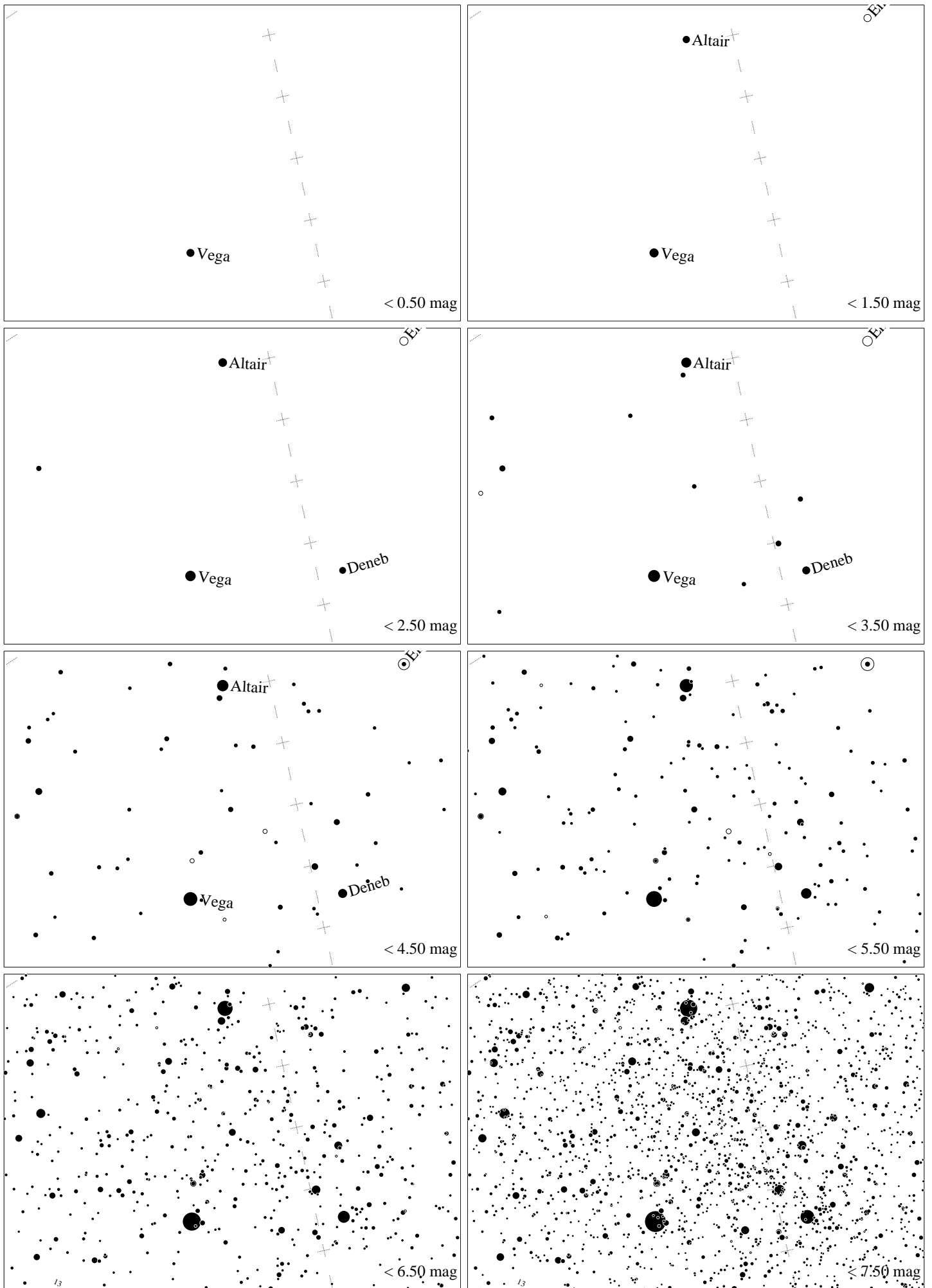
Maps for Globe at Night latitude 20° , 2023-09-10, 21 h local time (Sun at -40°), transparent air. Lines from N(E,S,W) to zenith shown (crosses each 10°). Centered on Albireo (β Cygni), 51° to the left from N, at 77° height, near the centre of Summer Triangle. Map vertical size is 50° . *Jan Hollan, CzechGlobe*



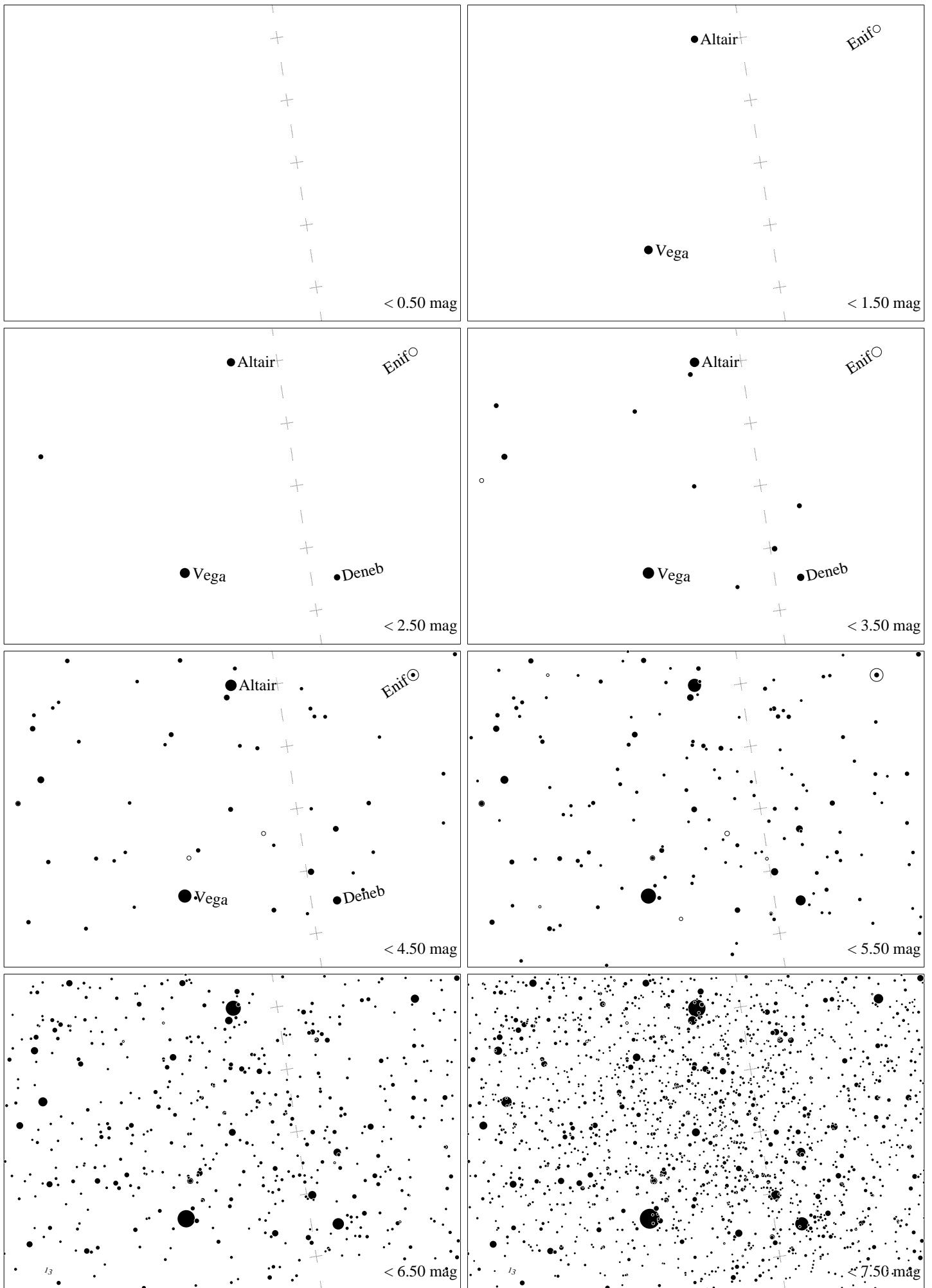
Maps for Globe at Night latitude 10° , 2023-09-10, 21 h local time (Sun at -44°), transparent air. Lines from N(E,S,W) to zenith shown (crosses each 10°). Centered on Albireo (β Cygni), 30° to the left from N, at 69° height, near the centre of Summer Triangle. Map vertical size is 50° . *Jan Hollan, CzechGlobe*



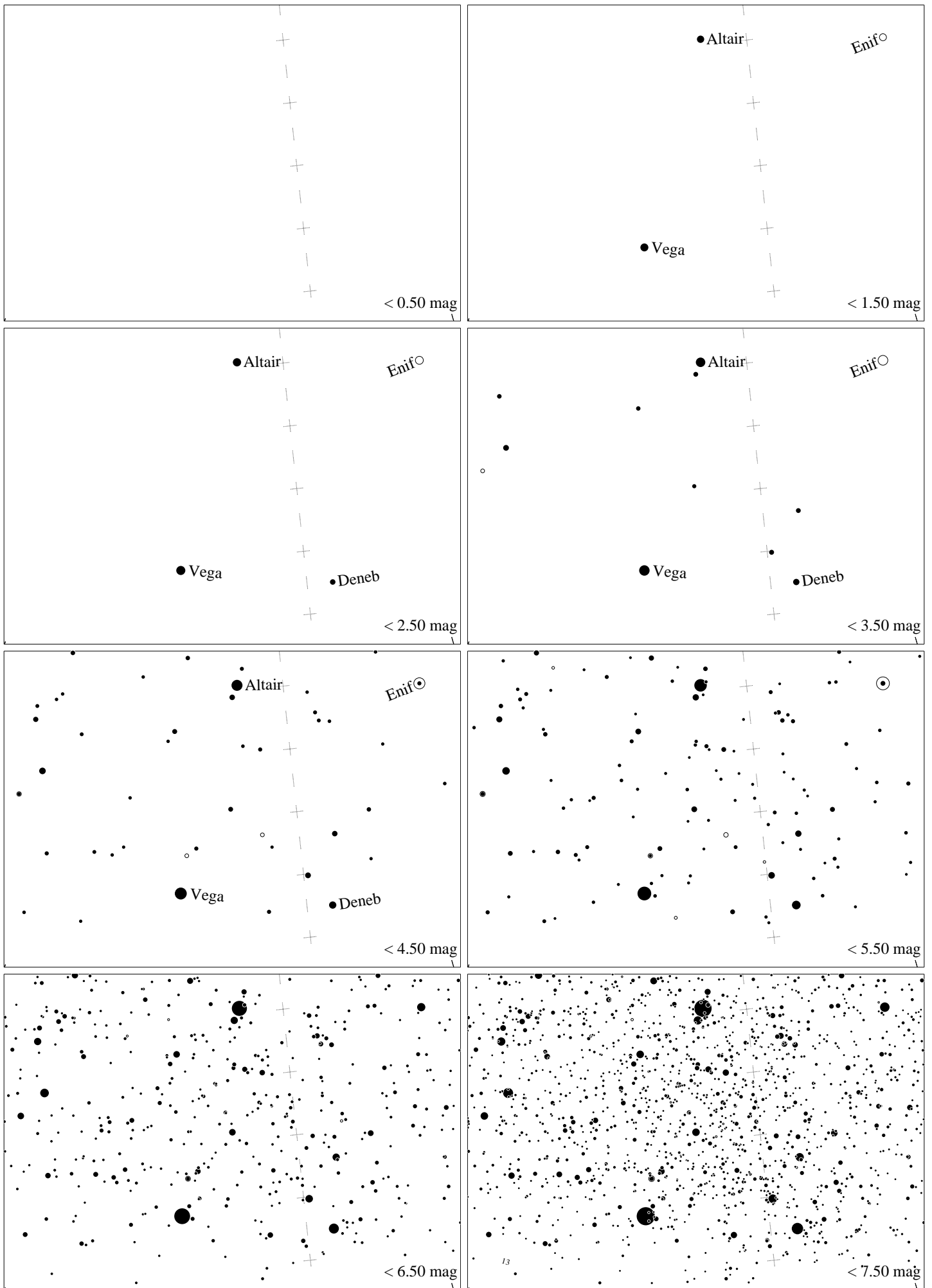
Maps for Globe at Night latitude 0° , 2023-09-10, 21 h local time (Sun at -46°), transparent air. Lines from N(E,S,W) to zenith shown (crosses each 10°). Centered on Albireo (β Cygni), 21° to the left from N, at 60° height, near the centre of Summer Triangle. Map vertical size is 50° . *Jan Hollan, CzechGlobe*



Maps for Globe at Night latitude -10° , 2023-09-10, 21 h local time (Sun at -46°), transparent air. Lines from N(E,S,W) to zenith shown (crosses each 10°). Centered on Albireo (β Cygni), 16° to the left from N, at 50° height, near the centre of Summer Triangle. Map vertical size is 50° . *Jan Hollan, CzechGlobe*



Maps for Globe at Night latitude -20° , 2023-09-10, 21 h local time (Sun at -44°), transparent air. Lines from N(E,S,W) to zenith shown (crosses each 10°). Centered on Albireo (β Cygni), 14° to the left from N, at 41° height, near the centre of Summer Triangle. Map vertical size is 50° . *Jan Hollan, CzechGlobe*



Maps for Globe at Night latitude -30° , 2023-09-10, 21 h local time (Sun at -41°), transparent air. Lines from N(E,S,W) to zenith shown (crosses each 10°). Centered on Albireo (β Cygni), 12° to the left from N, at 31° height, near the centre of Summer Triangle. Map vertical size is 50° . *Jan Hollan, CzechGlobe*