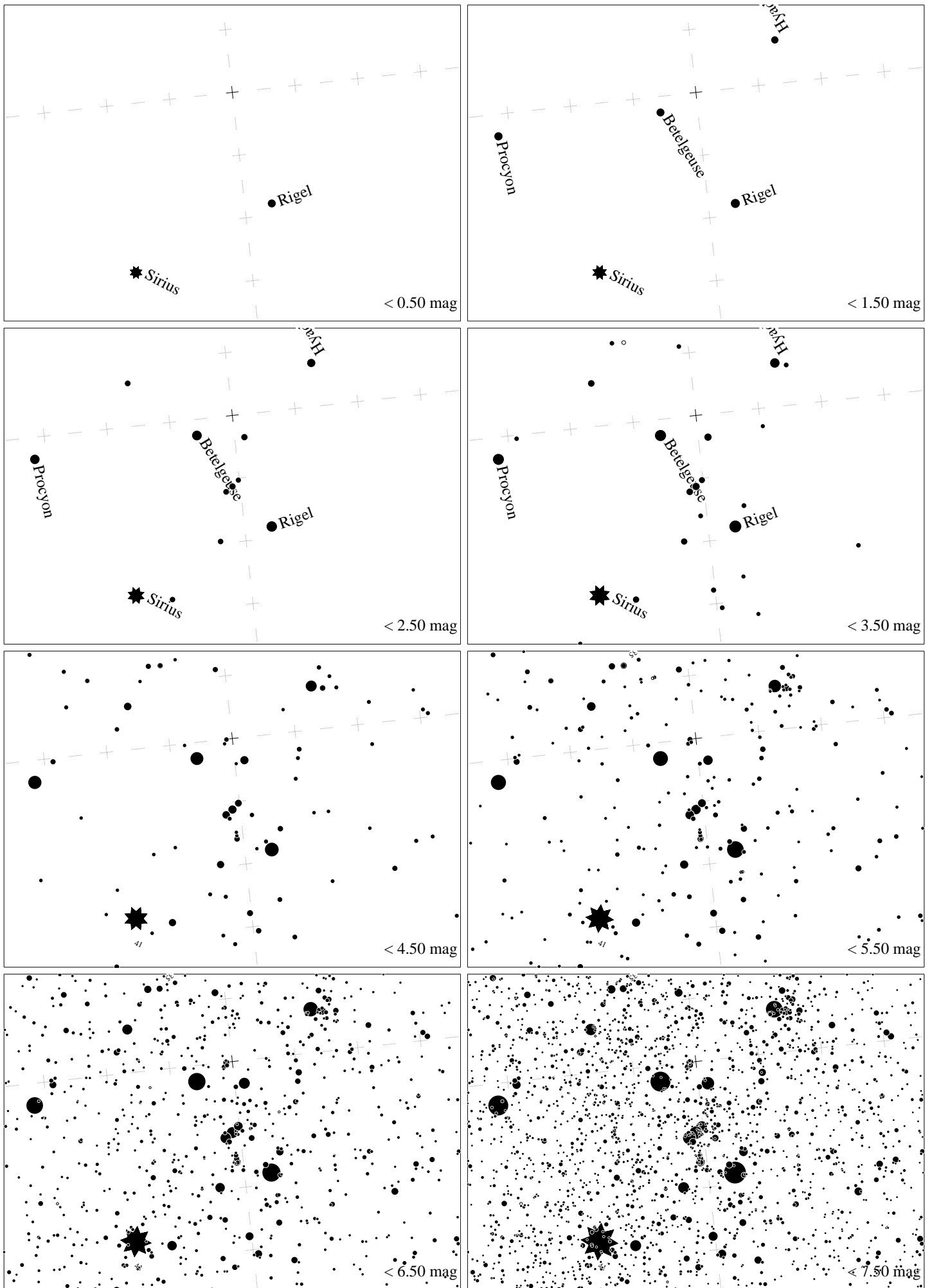
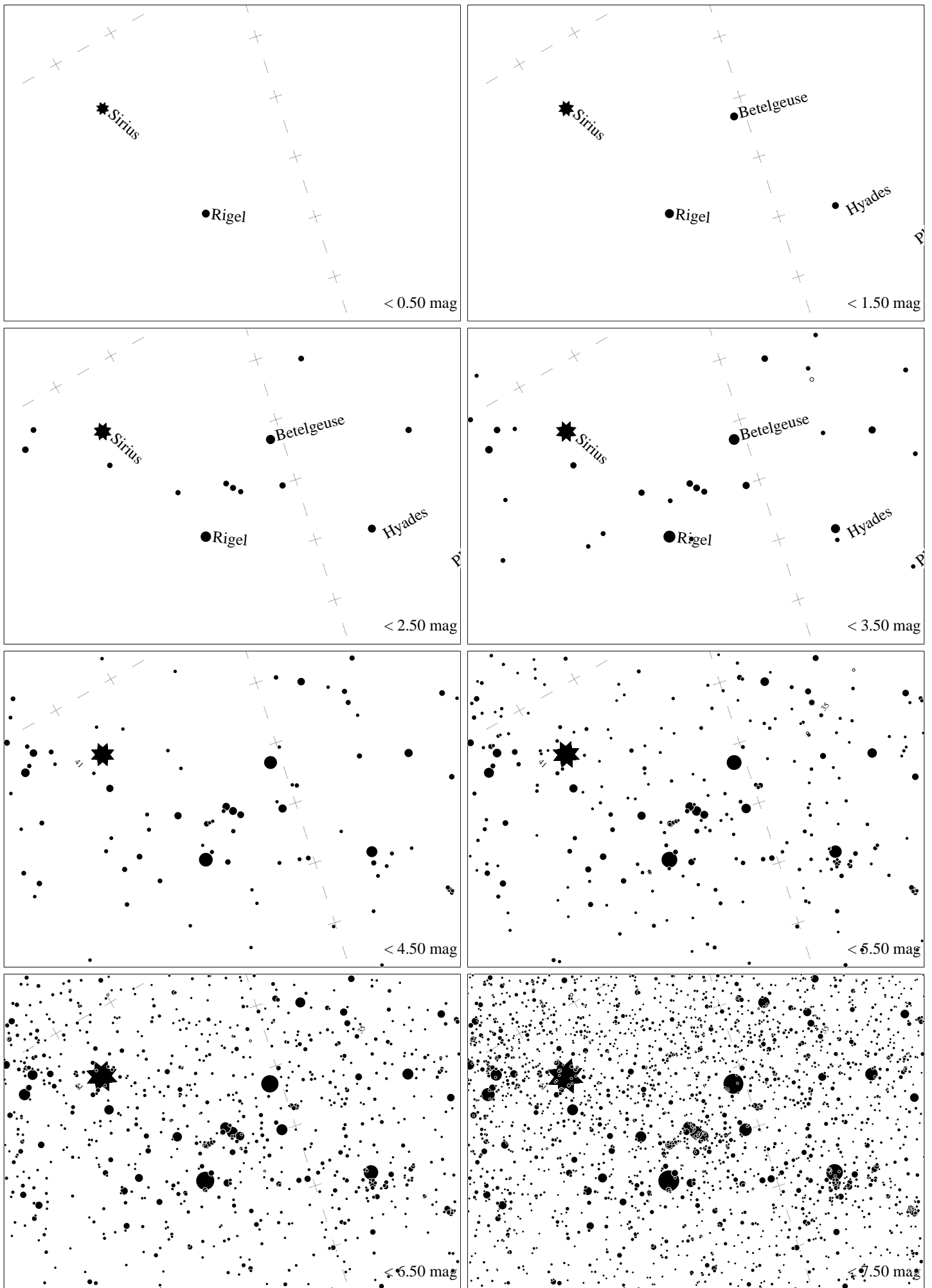


Maps for Globe at Night at latitude  $10^\circ$ , 2022-01-01, 21 h local time (Sun at  $-44^\circ$ ), transparent air. Lines from N(E,S,W) to zenith shown (crosses each  $10^\circ$ ). Orion's belt is  $70^\circ$  to the left from S, at  $60^\circ$  height. Star clusters M 41 and M35 marked when appropriate. Map vertical size is  $50^\circ$ . *Jan Hollan maps, CzechGlobe*



Maps for Globe at Night at latitude  $10^\circ$ , 2022-01-28, 21:00 local time (Sun at  $-43^\circ$ ), transparent air. Lines from N(E,S,W) to zenith shown (crosses each  $10^\circ$ ). Orion's belt is  $6^\circ$  to the left from S, at  $79^\circ$  height. Star clusters M 41 and M35 marked when appropriate. Map vertical size is  $50^\circ$ . *Jan Hollan maps, CzechGlobe*



Maps for Globe at Night at latitude  $10^\circ$ , 2022-02-26, 21 h local time (Sun at  $-42^\circ$ ), transparent air. Lines from N(E,S,W) to zenith shown (crosses each  $10^\circ$ ). Orion's belt is  $69^\circ$  to the right from S, at  $61^\circ$  height. Star clusters M 41 and M35 marked when appropriate. Map vertical size is  $50^\circ$ . *Jan Hollan maps, CzechGlobe*