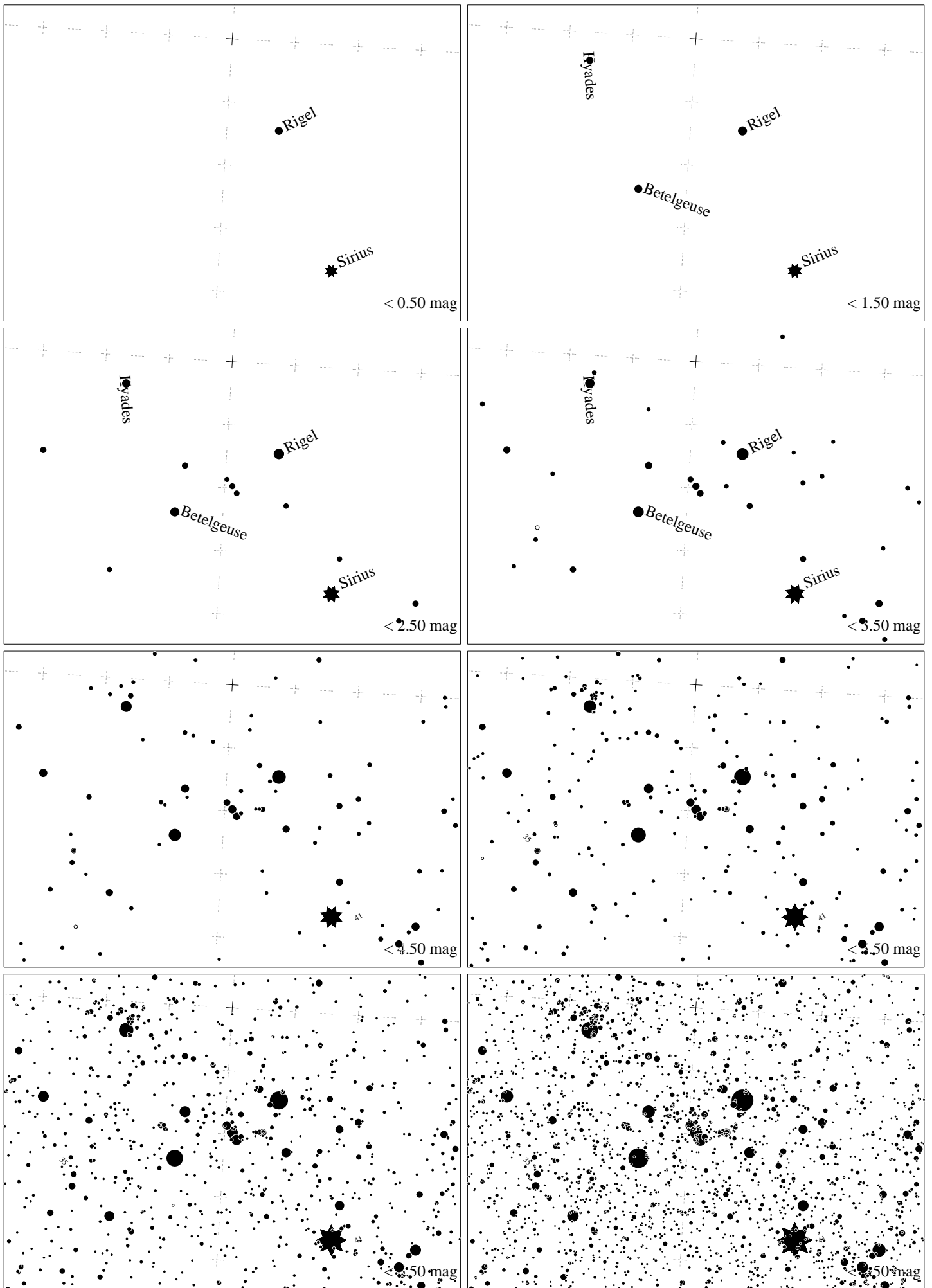
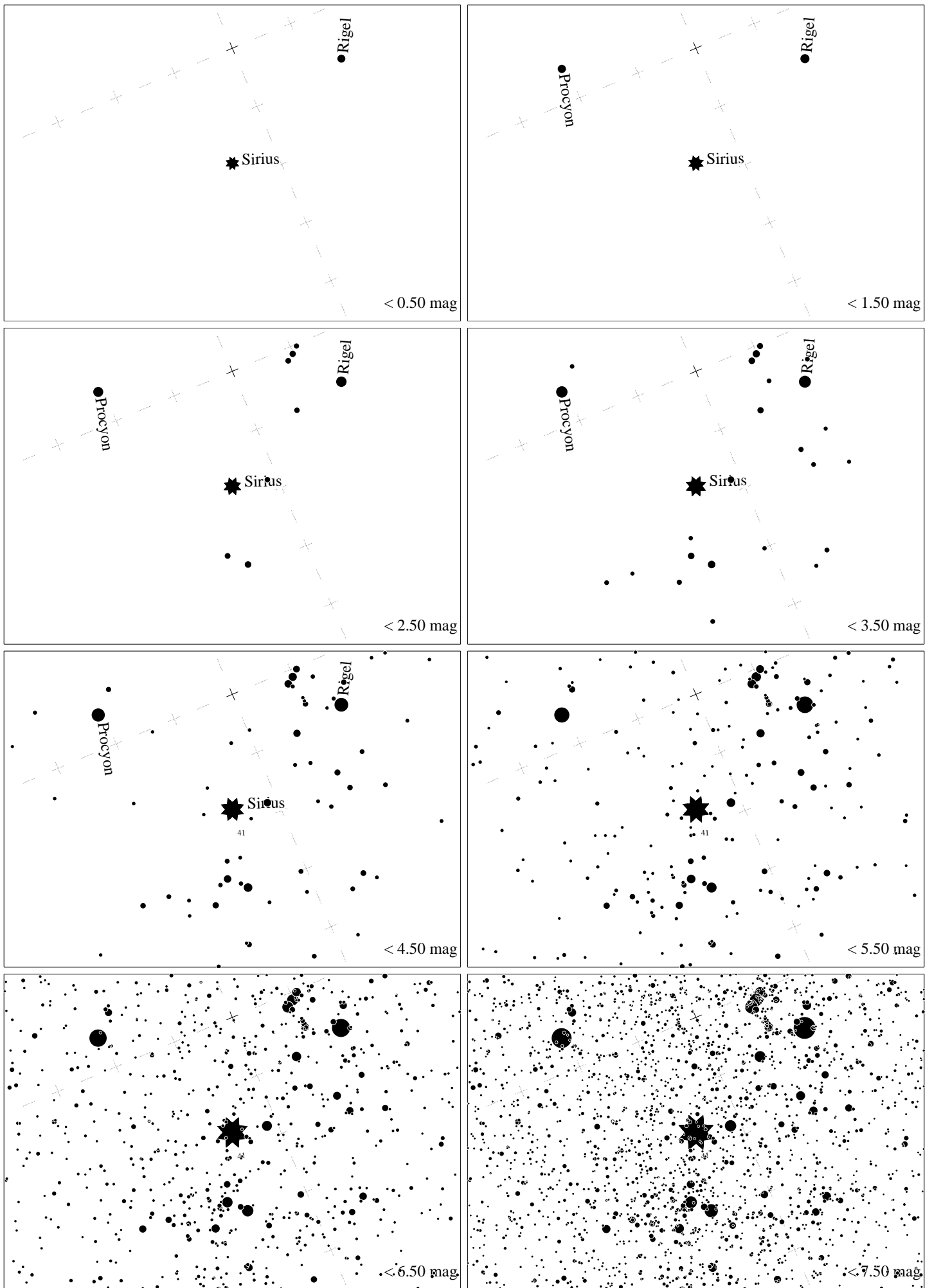


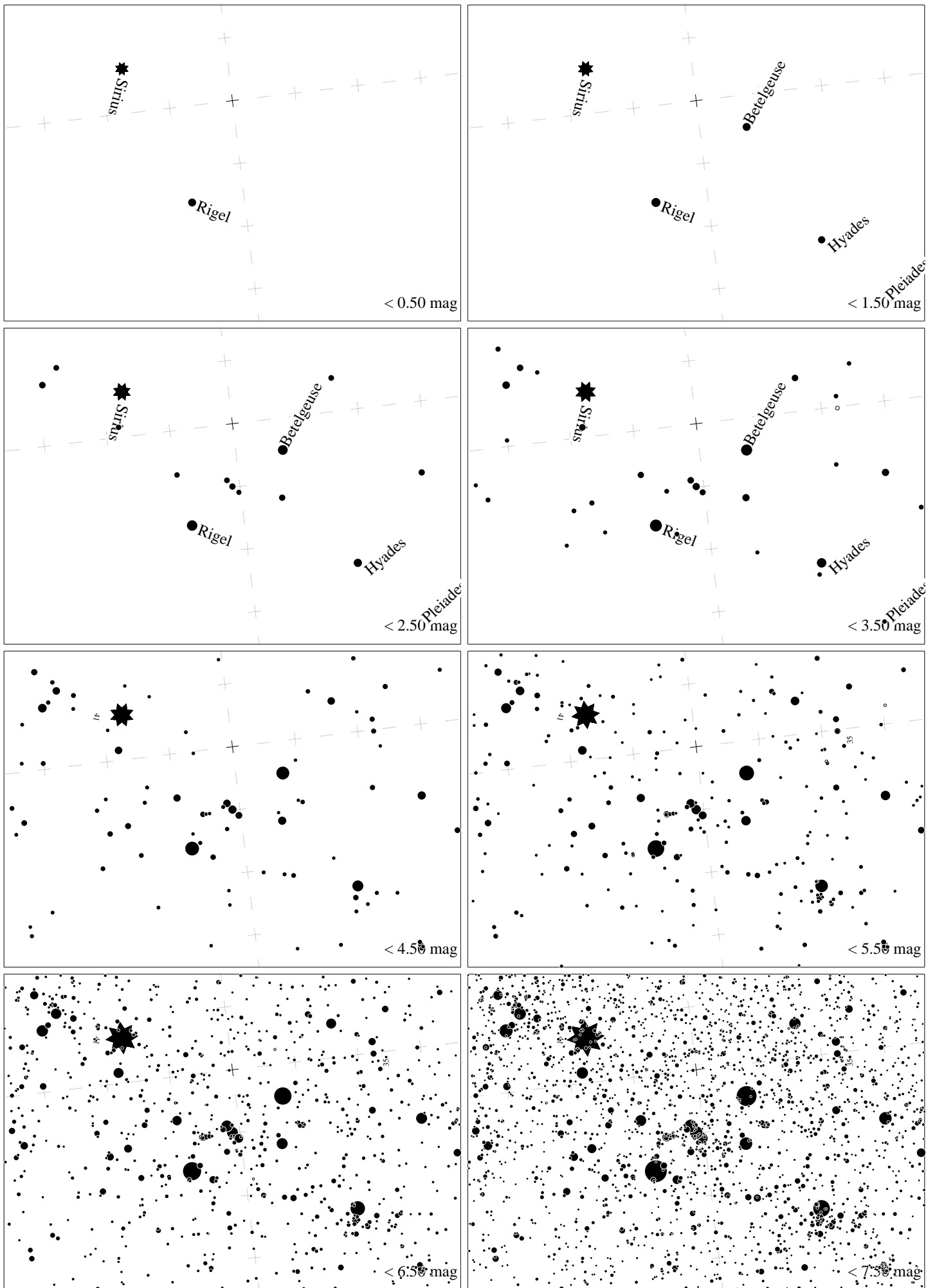
Maps for Globe at Night at latitude 0° , 2020-01-09, 21 h local time (Sun at -39°), transparent air. Lines from N(E,S,W) to zenith shown (crosses each 10°). The brightest fixed star Sirius is 64° to the left from S, at 49° height. Star cluster M 41 marked when appropriate. Map vertical size is 50° . *Jan Hollan, CzechGlobe*



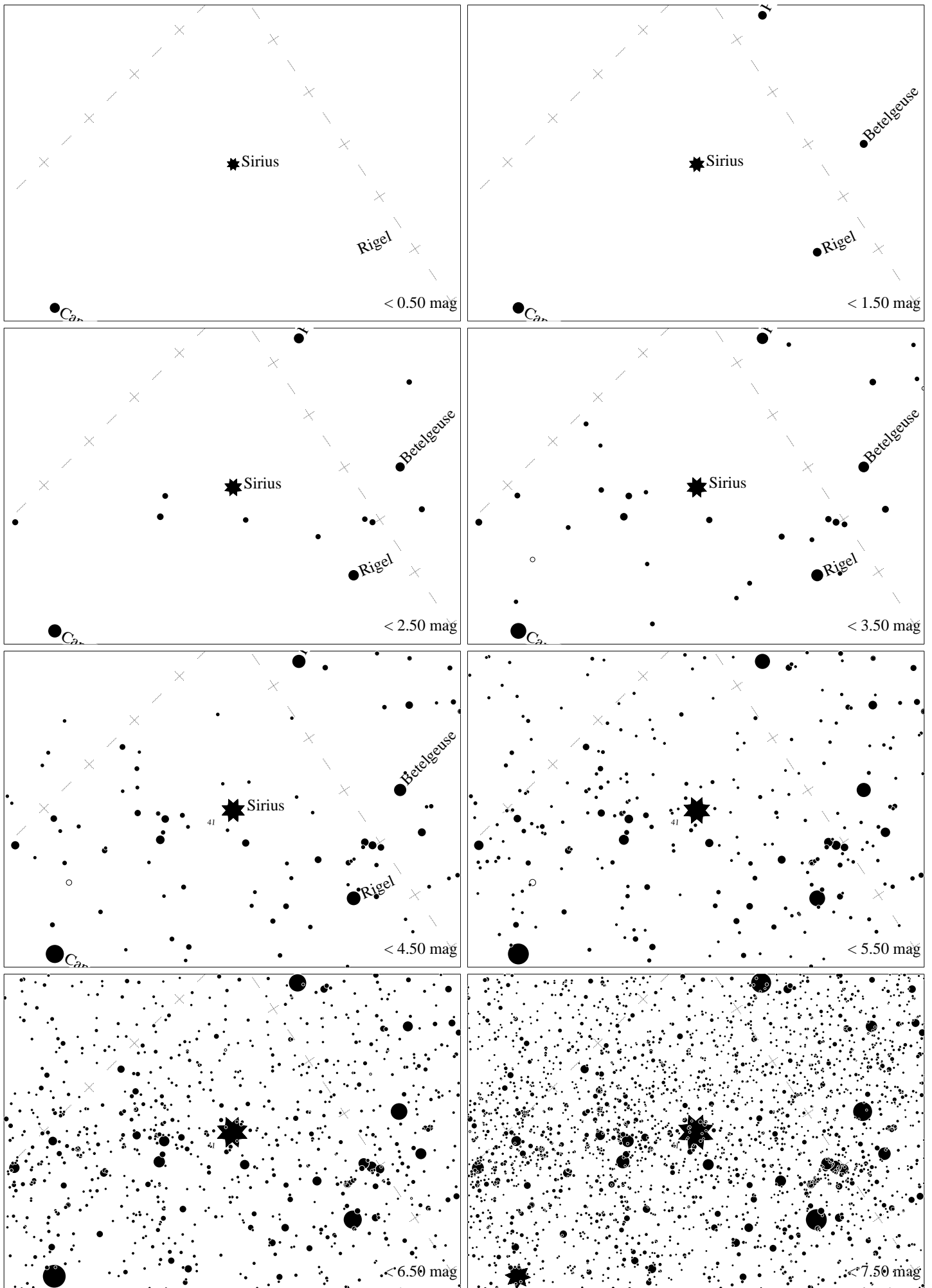
Maps for Globe at Night at latitude 0° , 2021-01-09, 21 h local time (Sun at -39°), transparent air. Lines from N(E,S,W) to zenith shown (crosses each 10°). Orion's belt is 86° to the left from S, at 70° height. Star clusters M 41 and M35 marked when appropriate. Map vertical size is 50° . *Jan Hollan maps, CzechGlobe*



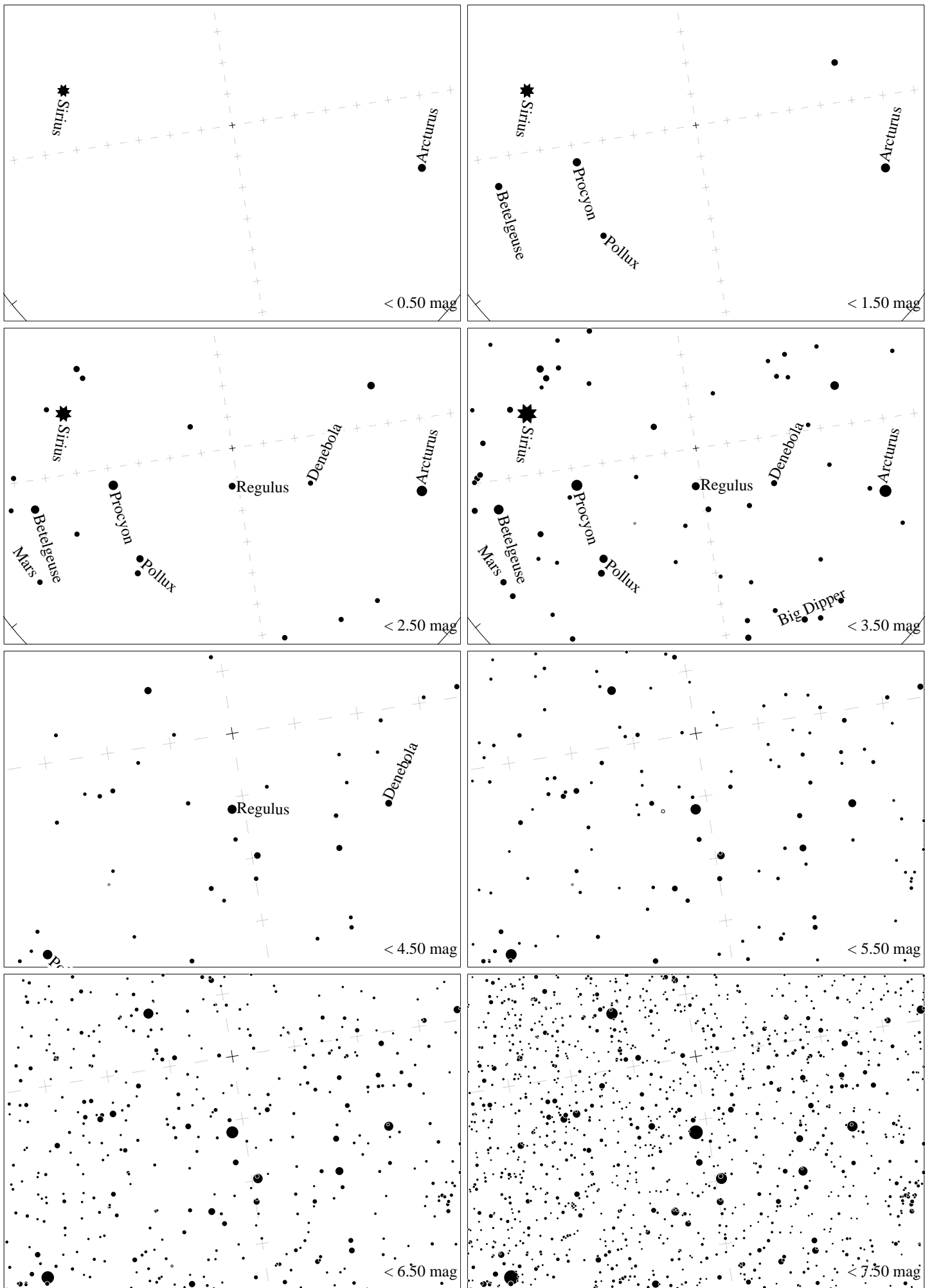
Maps for Globe at Night at latitude 0° , 2021-02-08, 21 h local time (Sun at -40°), transparent air. Lines from N(E,S,W) to zenith shown (crosses each 10°). The brightest fixed star Sirius is 23° to the left from S, at 72° height. Star cluster M 41 marked when appropriate. Map vertical size is 50° . *Jan Hollan, CzechGlobe*



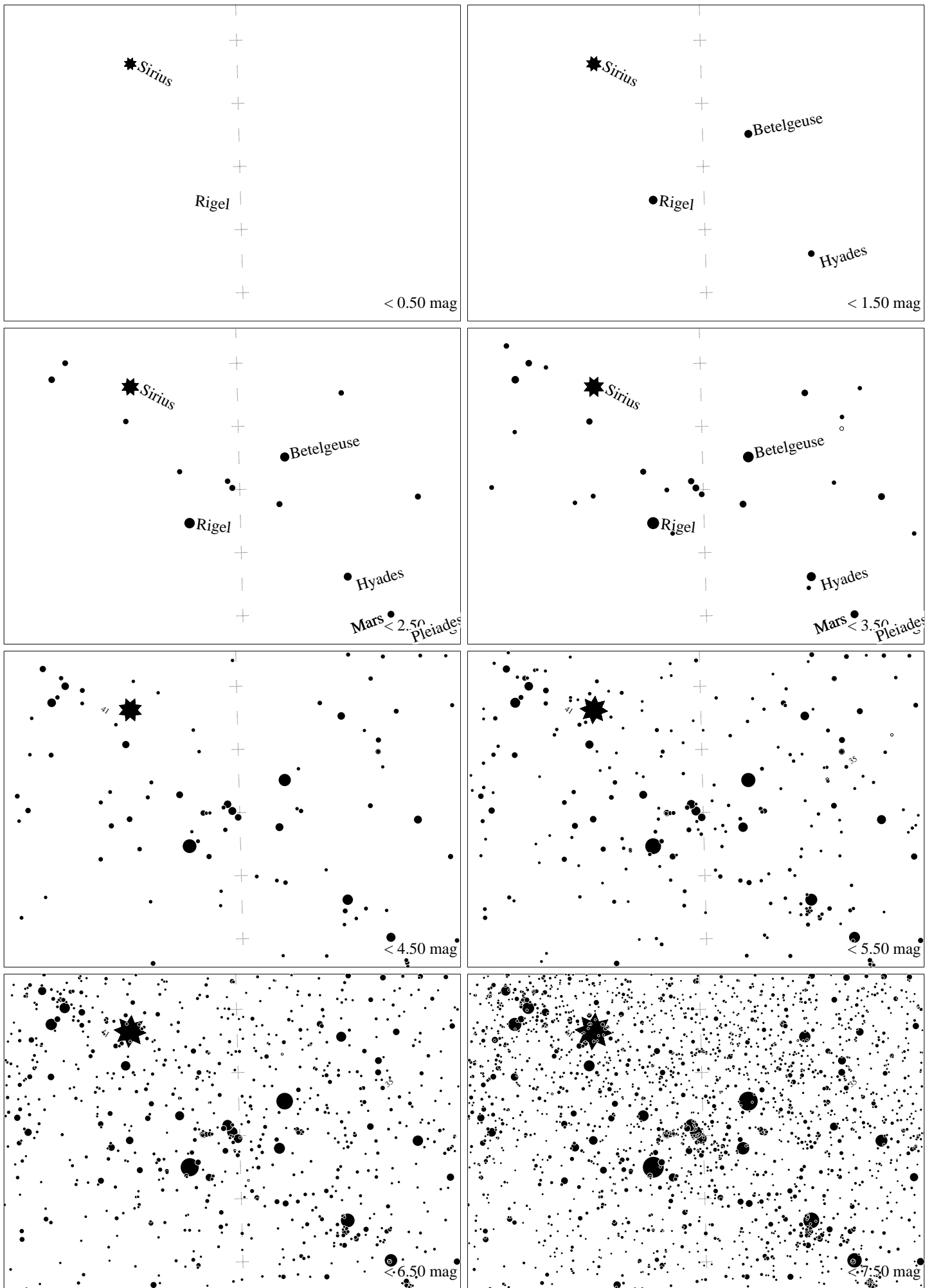
Maps for Globe at Night at latitude 0° , 2021-02-08, 21 h local time (Sun at -40°), transparent air. Lines from N(E,S,W) to zenith shown (crosses each 10°). Orion's belt is 83° to the right from S, at 80° height. Star clusters M 41 and M35 marked when appropriate. Map vertical size is 50° . *Jan Hollan maps, CzechGlobe*



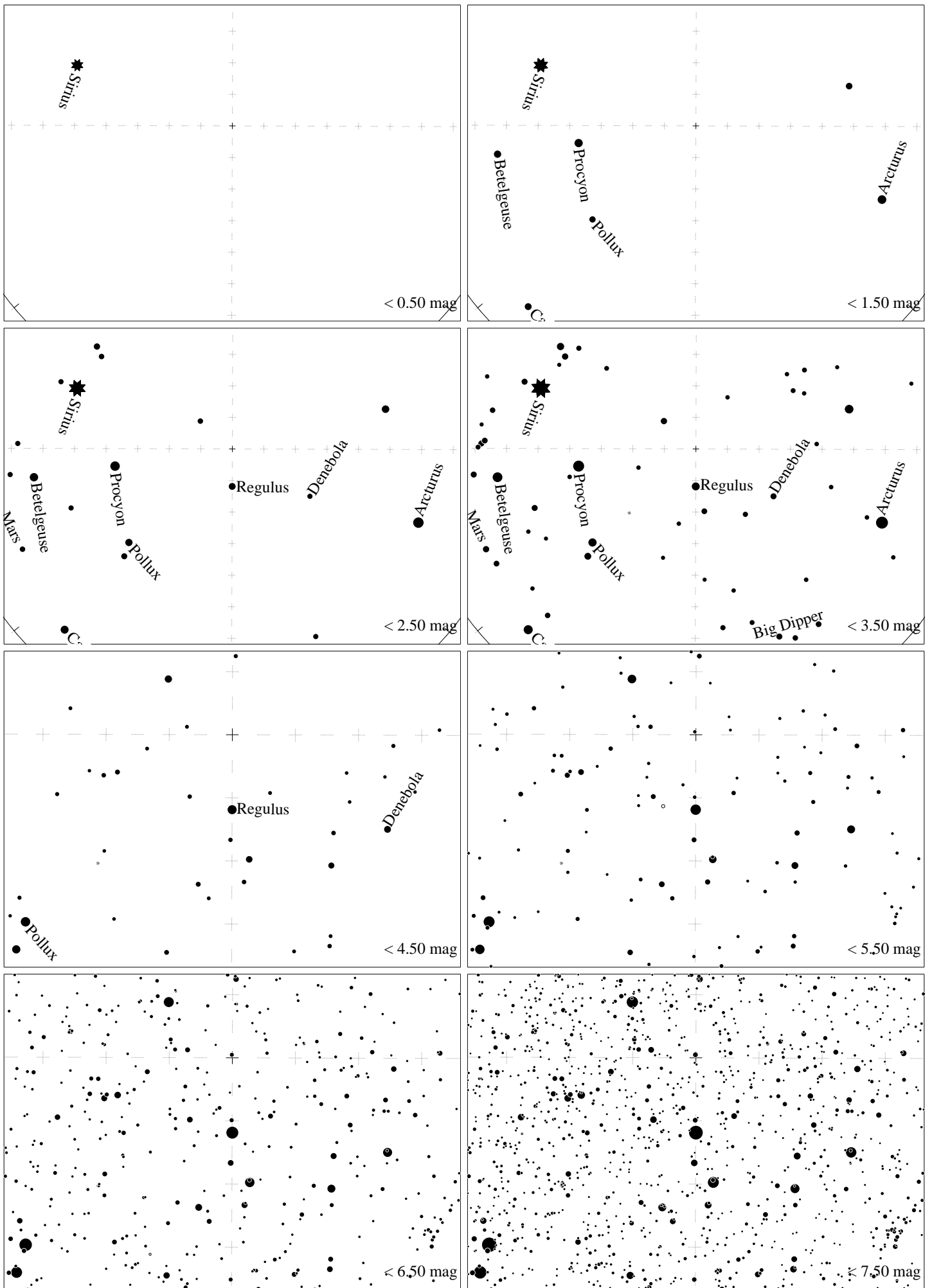
Maps for Globe at Night at latitude 0° , 2021-03-10, 21 h local time (Sun at -42°), transparent air. Lines from N(E,S,W) to zenith shown (crosses each 10°). The brightest fixed star Sirius is 52° to the right from S, at 62° height. Star cluster M 41 marked when appropriate. Map vertical size is 50° . *Jan Hollan, CzechGlobe*



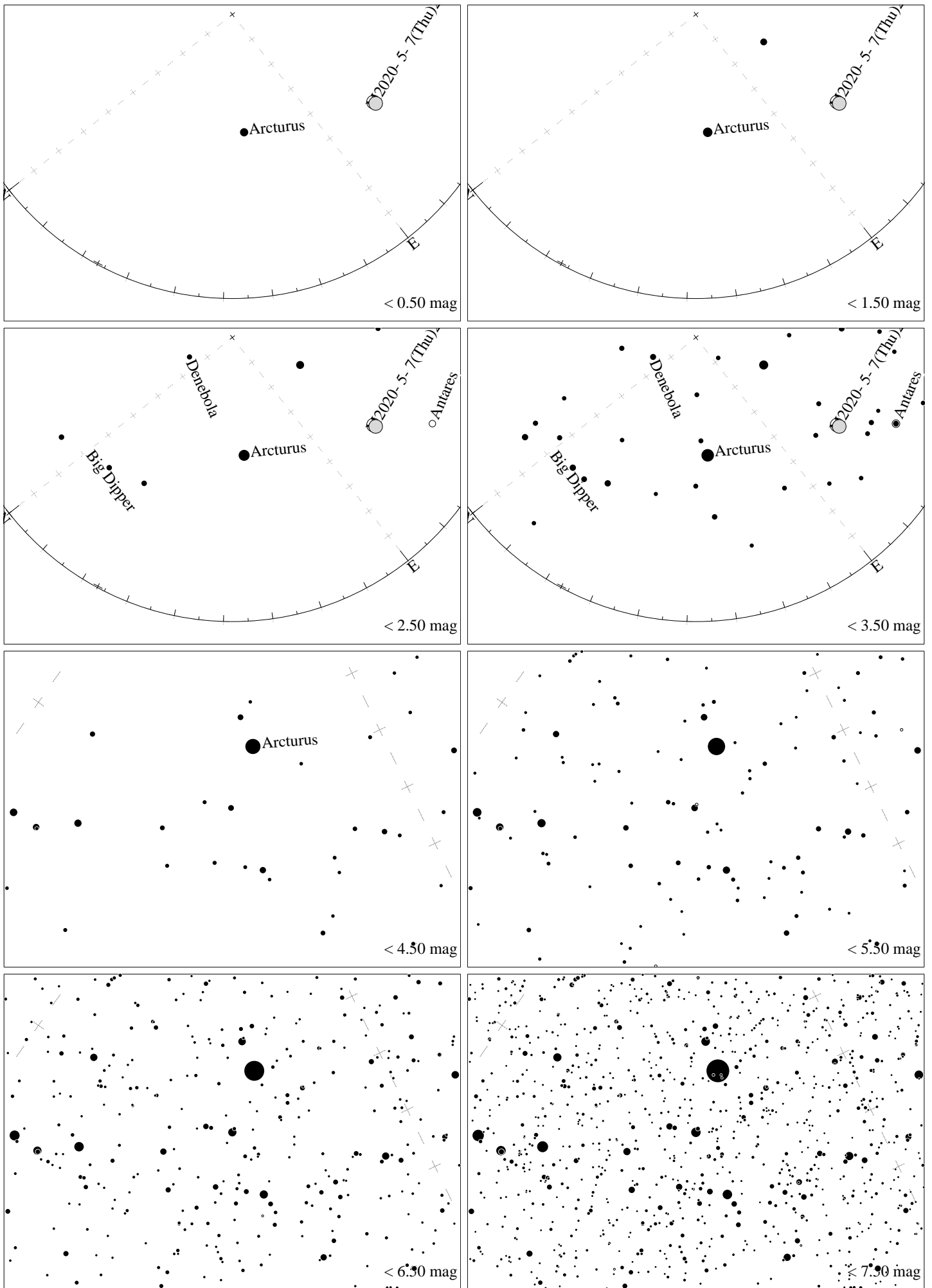
Maps for Globe at Night at latitude 0° , 2021-04-10, 21 h local time (Sun at -44°), transparent air. Lines from N(E,S,W) to zenith shown (crosses each 10°). Regulus (α Leonis) is 9° to the left from N, at 78° height. Detailed maps 50° vertically, the first four maps 100° . *Jan Hollan maps, CzechGlobe*



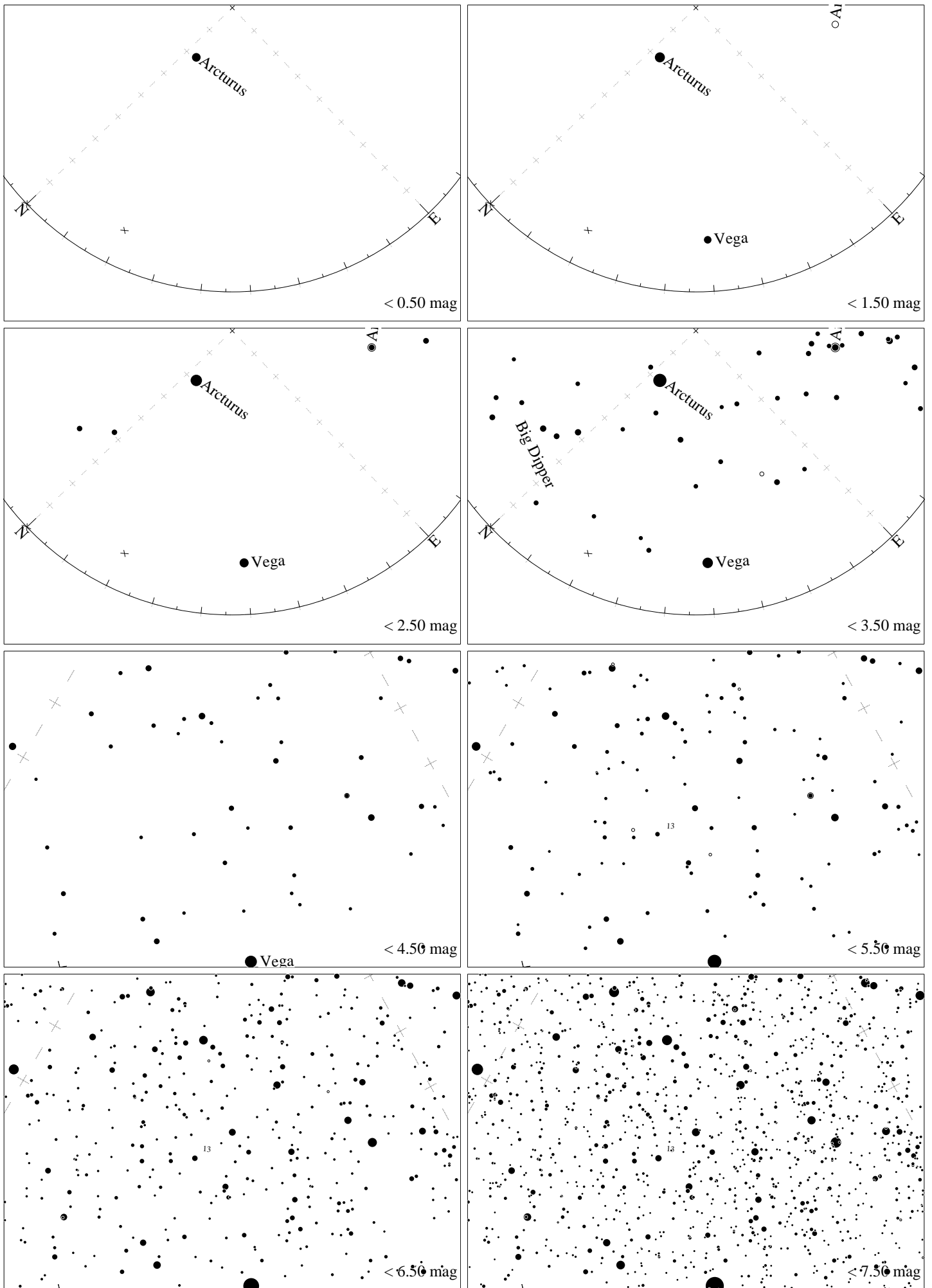
Maps for Globe at Night at latitude 0° , 2021-03-10, 21 h local time (Sun at -42°), transparent air. Lines from N(E,S,W) to zenith shown (crosses each 10°). Orion's belt is 88° to the right from S, at 51° height. Star clusters M 41 and M35 marked when appropriate. Map vertical size is 50° . *Jan Hollan maps, CzechGlobe*



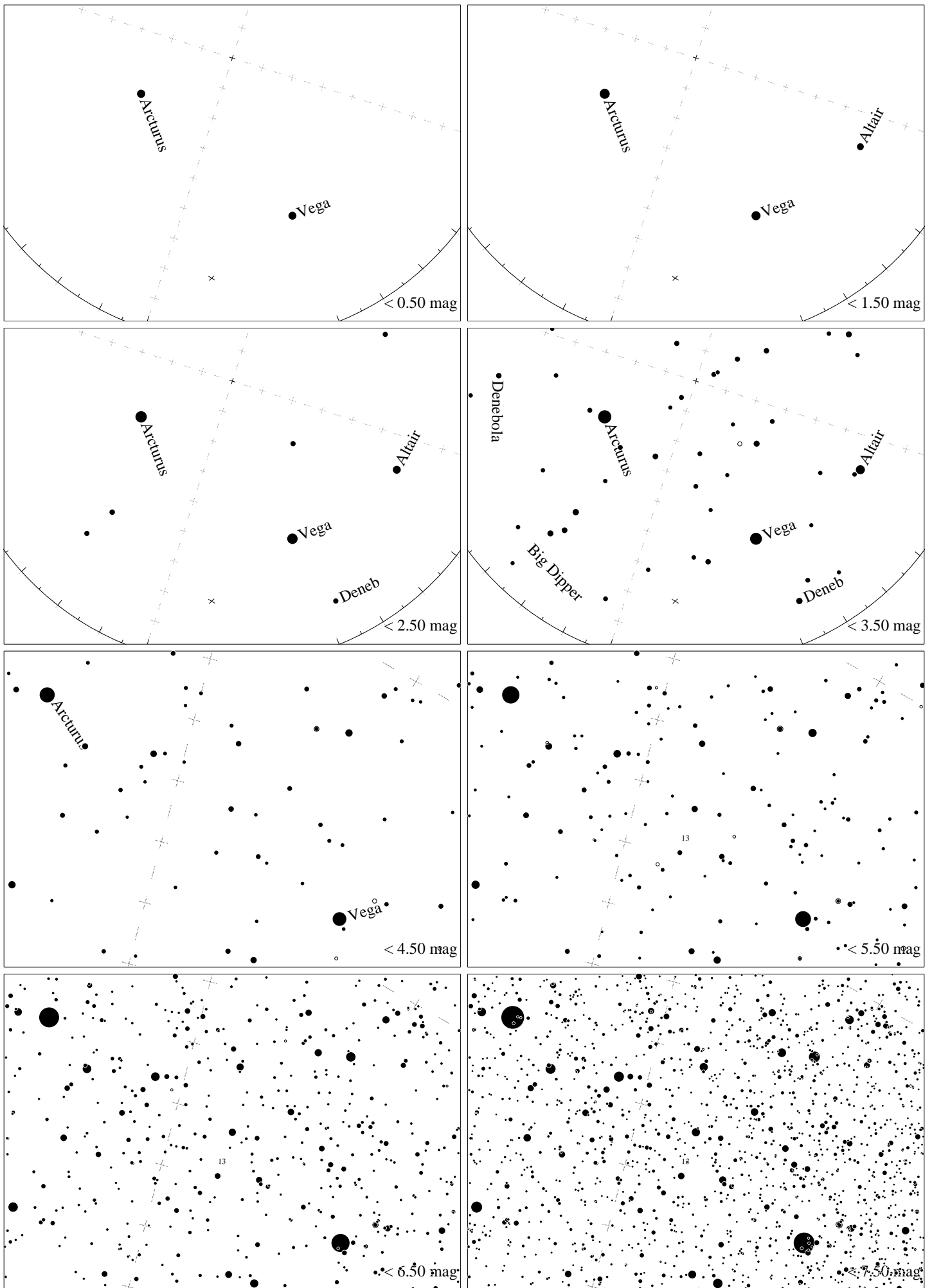
Maps for Globe at Night at latitude 0° , 2021-04-08, 21 h local time (Sun at -44°), transparent air. Lines from N(E,S,W) to zenith shown (crosses each 10°). Regulus (α Leonis) is 0° to the right from N, at 78° height. Detailed maps 50° vertically, the first four maps 100° . *Jan Hollan maps, CzechGlobe*



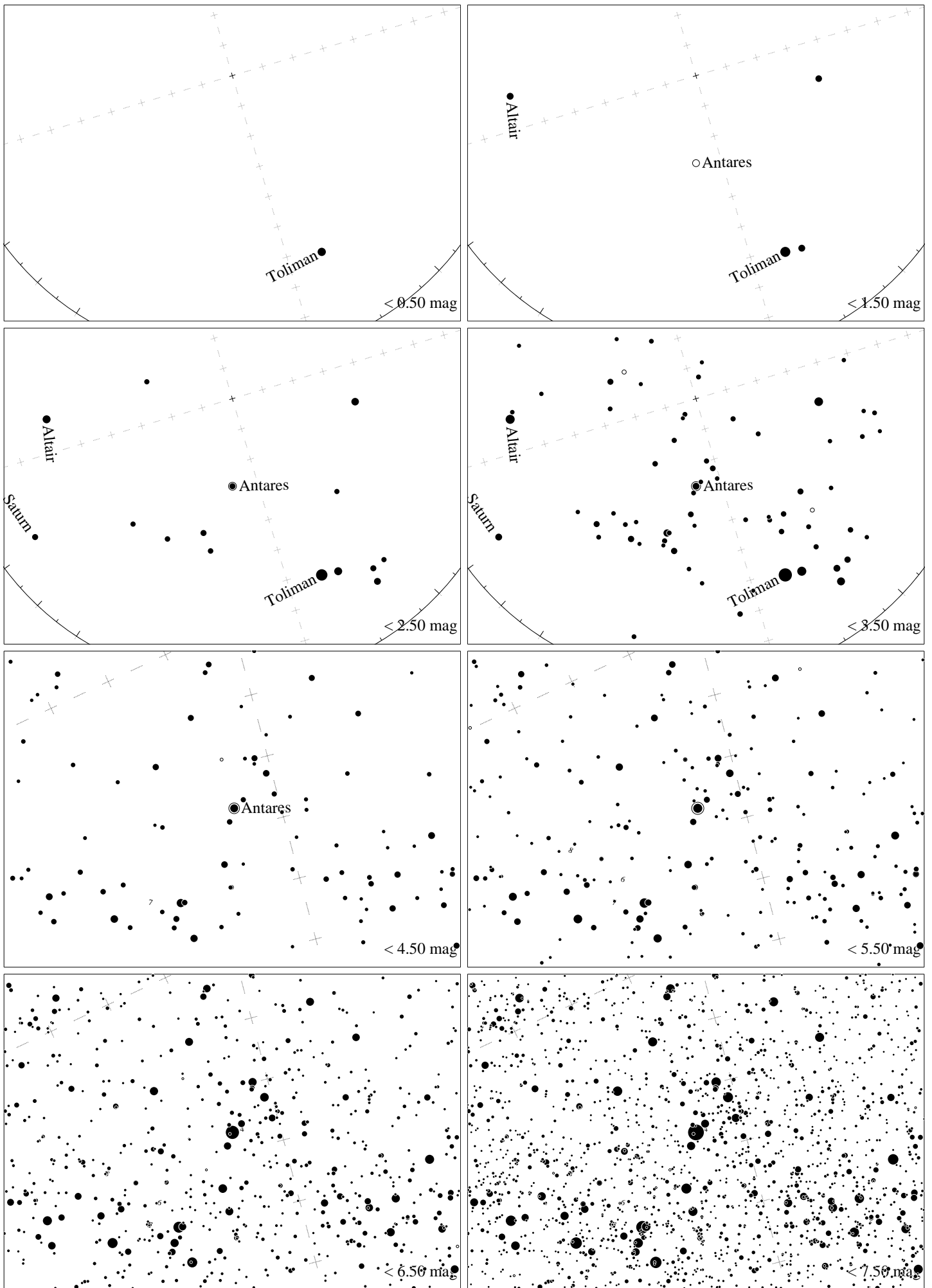
Maps for Globe at Night latitude 0° , 2020-05-07, 21 h local time (Sun at -43°), transparent air. Lines from N(E,S,W) to zenith shown (crosses each 10°). Centered on Izar (ϵ Bootis), which is 52° to the right from N, at 43° height. Detailed maps 50° vertically, the first four maps 100° . *Jan Hollan, CzechGlobe*



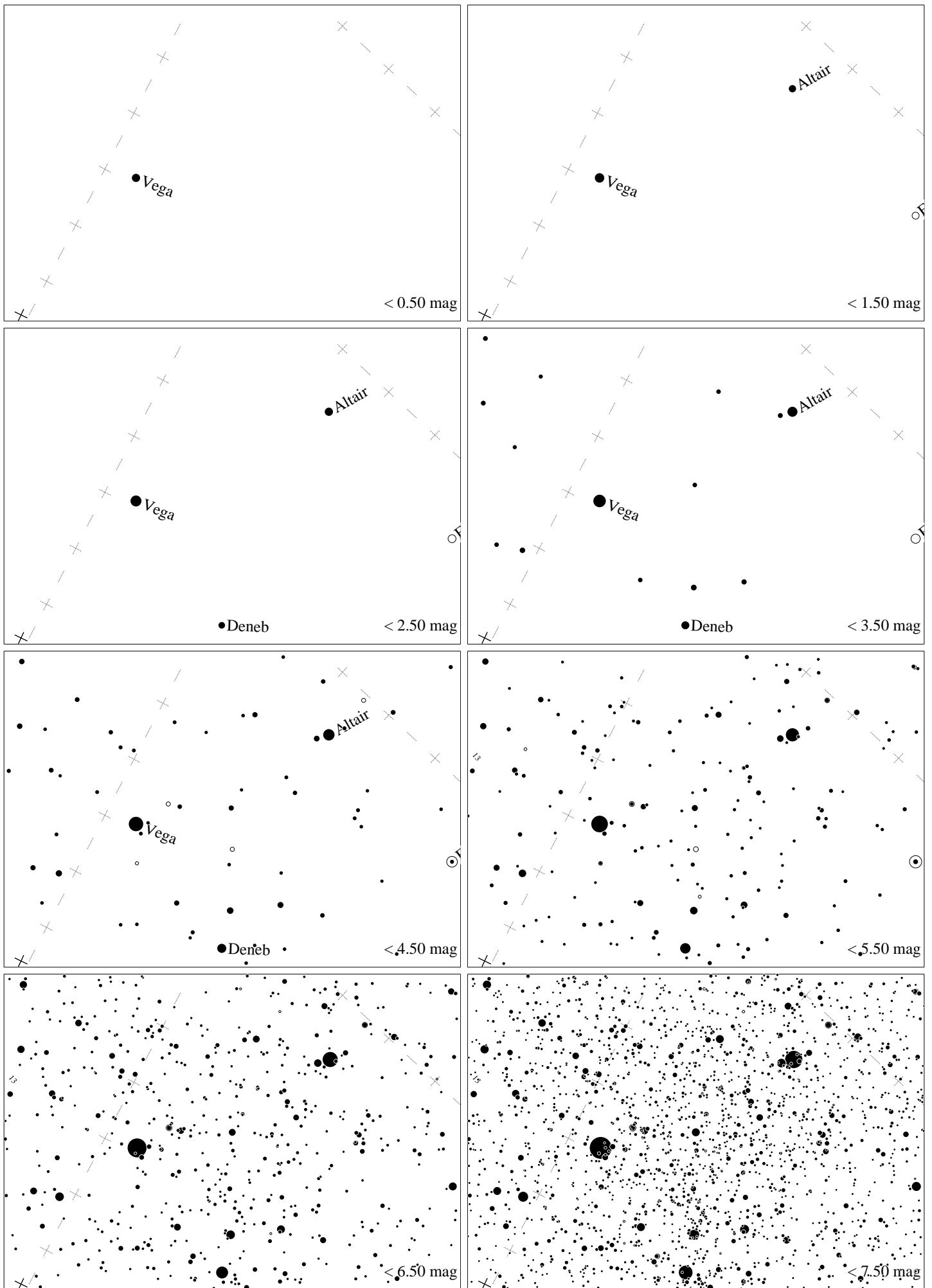
Maps for Globe at Night latitude 0° , 2021-06-06, 21 h local time (Sun at -41°), transparent air. Lines from N(E,S,W) to zenith shown (crosses each 10°). Centered on ζ Herculis, which is 46° to the right from N, at 41° height. Detailed maps 50° vertically, the first four maps 100° . *Jan Hollan, CzechGlobe*



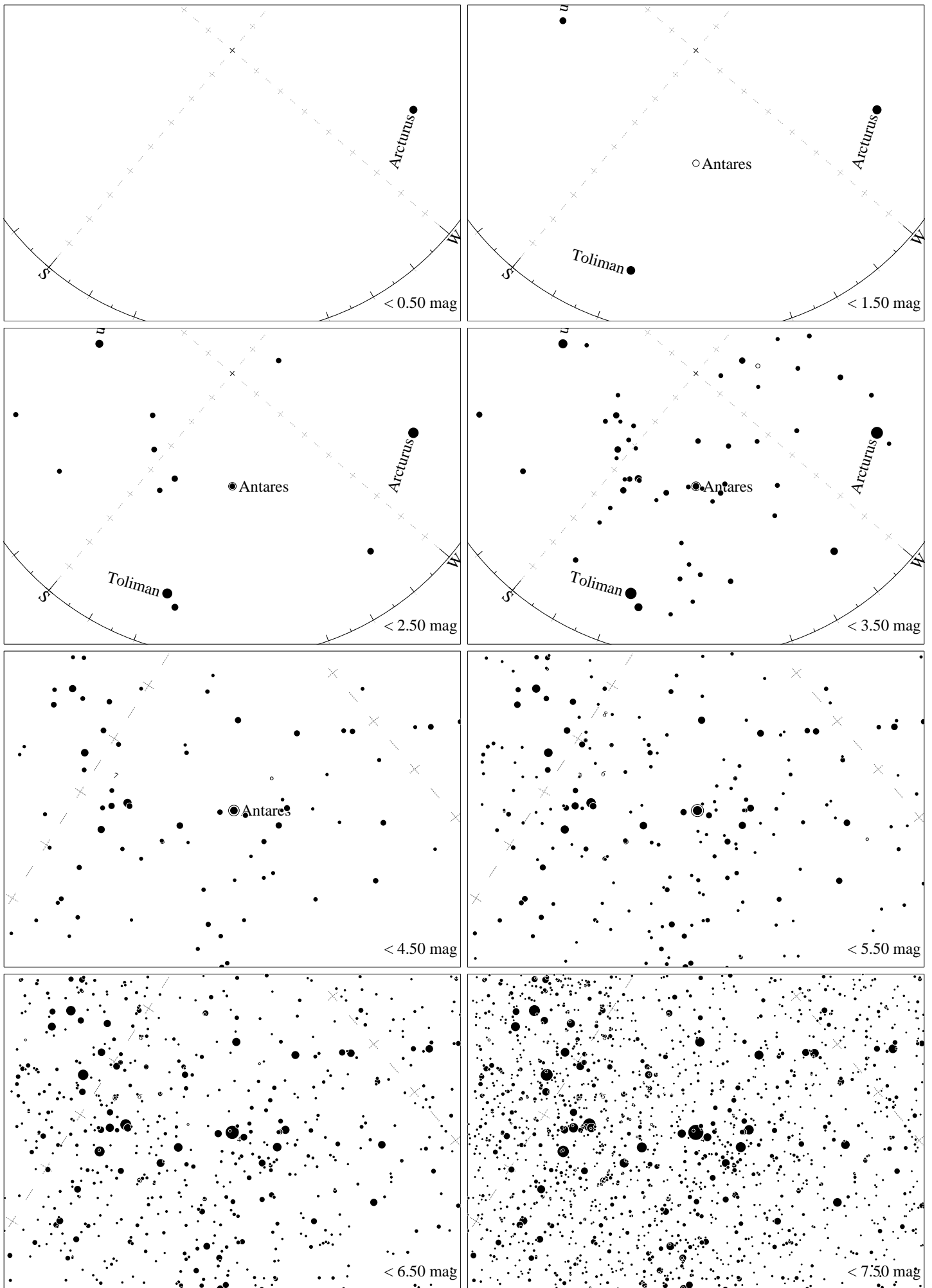
Maps for Globe at Night latitude 0° , 2021-07-05, 21 h local time (Sun at -40°), transparent air. Lines from N(E,S,W) to zenith shown (crosses each 10°). Centered on ζ Herculis, which is 18° to the right from N, at 57° height. Detailed maps 50° vertically, the first four maps 100° . *Jan Hollan, CzechGlobe*



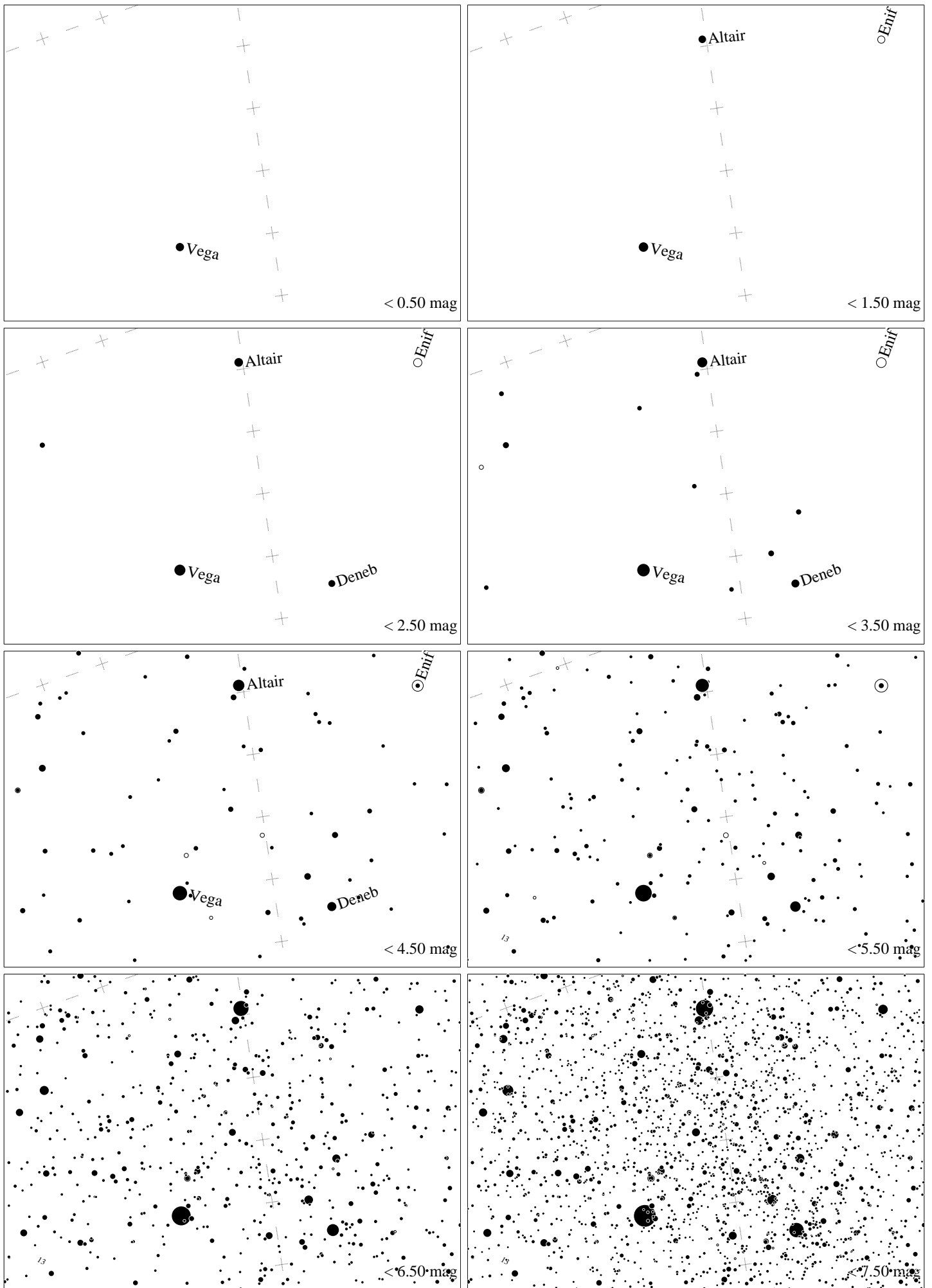
Maps for Globe at Night latitude 0° , 2021-07-05, 21 h local time (Sun at -40°), transparent air. Lines from N(E,S,W) to zenith shown (crosses each 10°). Centered on Antares (α Scorpii), which is 17° to the left from S, at 62° height. Detailed maps 50° vertically, the first four maps 100° . *Jan Hollan, CzechGlobe*



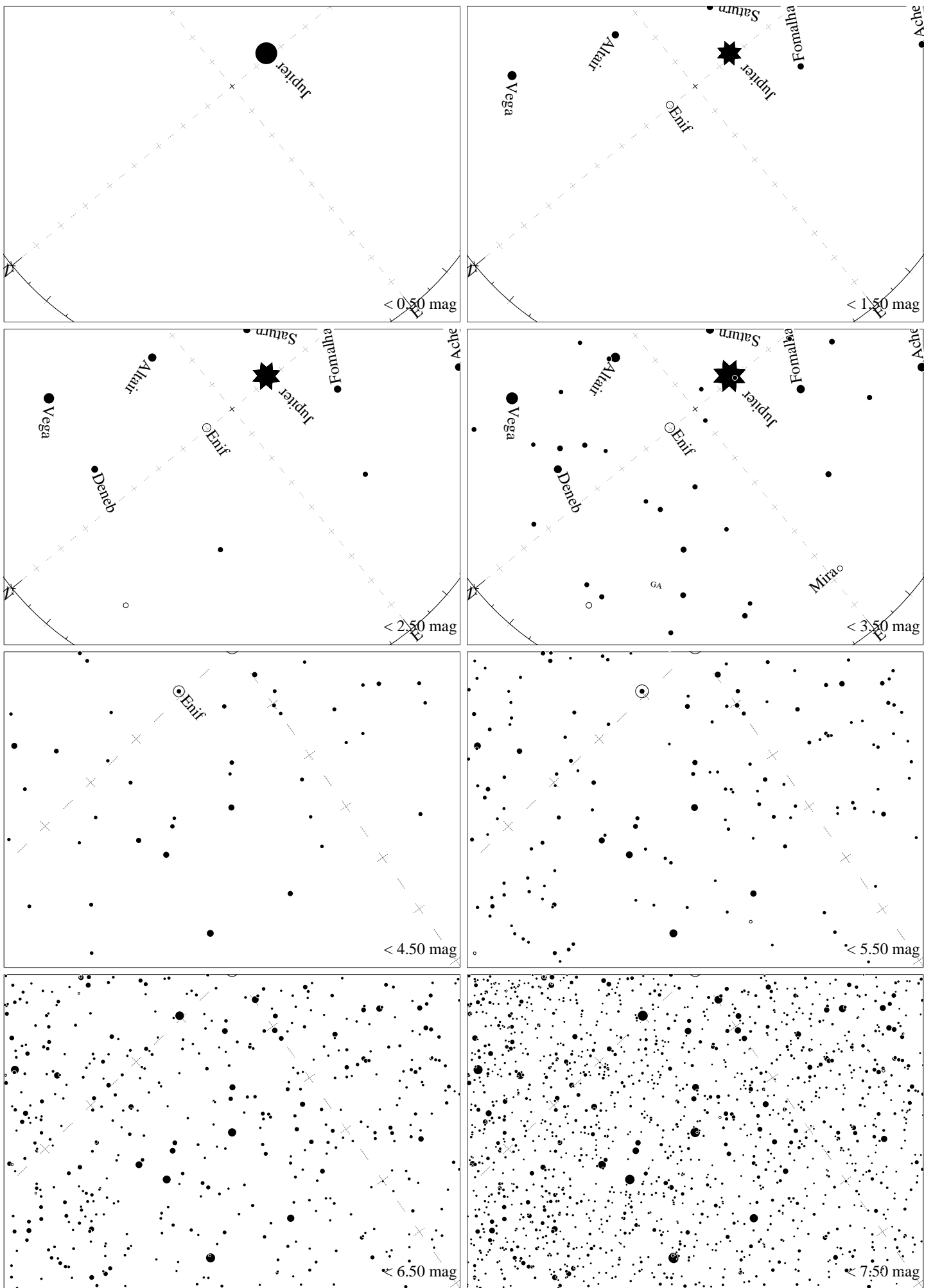
Maps for Globe at Night latitude 0° , 2021-08-08, 21 h local time (Sun at -42°), transparent air. Lines from N(E,S,W) to zenith shown (crosses each 10°). Centered on Albireo (β Cygni), 33° to the right from N, at 56° height, near the centre of Summer Triangle. Map vertical size is 50° . *Jan Hollan, CzechGlobe*



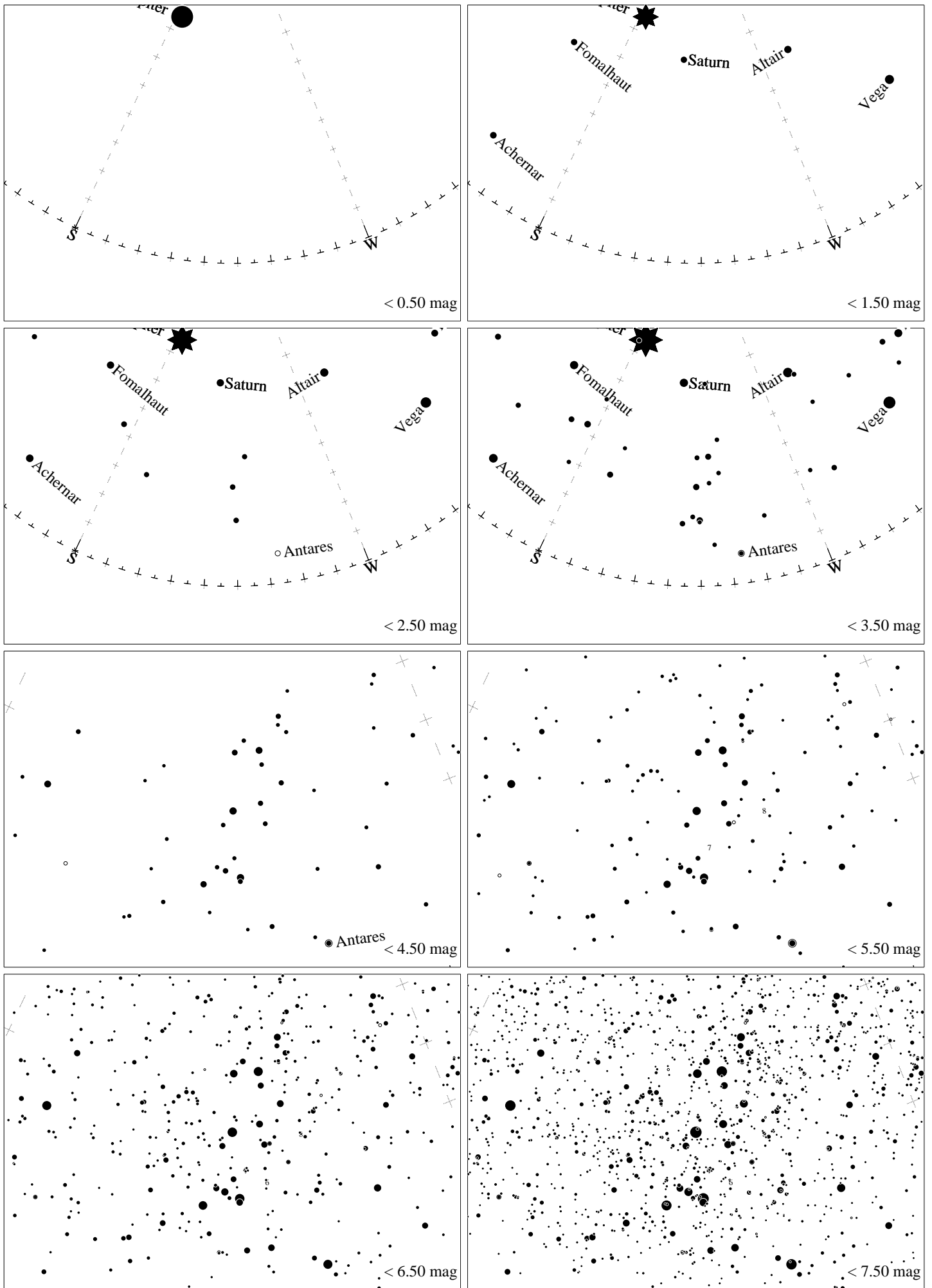
Maps for Globe at Night latitude 0° , 2021-08-08, 21 h local time (Sun at -42°), transparent air. Lines from N(E,S,W) to zenith shown (crosses each 10°). Centered on Antares (α Scorpii), which is 40° to the right from S, at 54° height. Detailed maps 50° vertically, the first four maps 100° . *Jan Hollan, CzechGlobe*



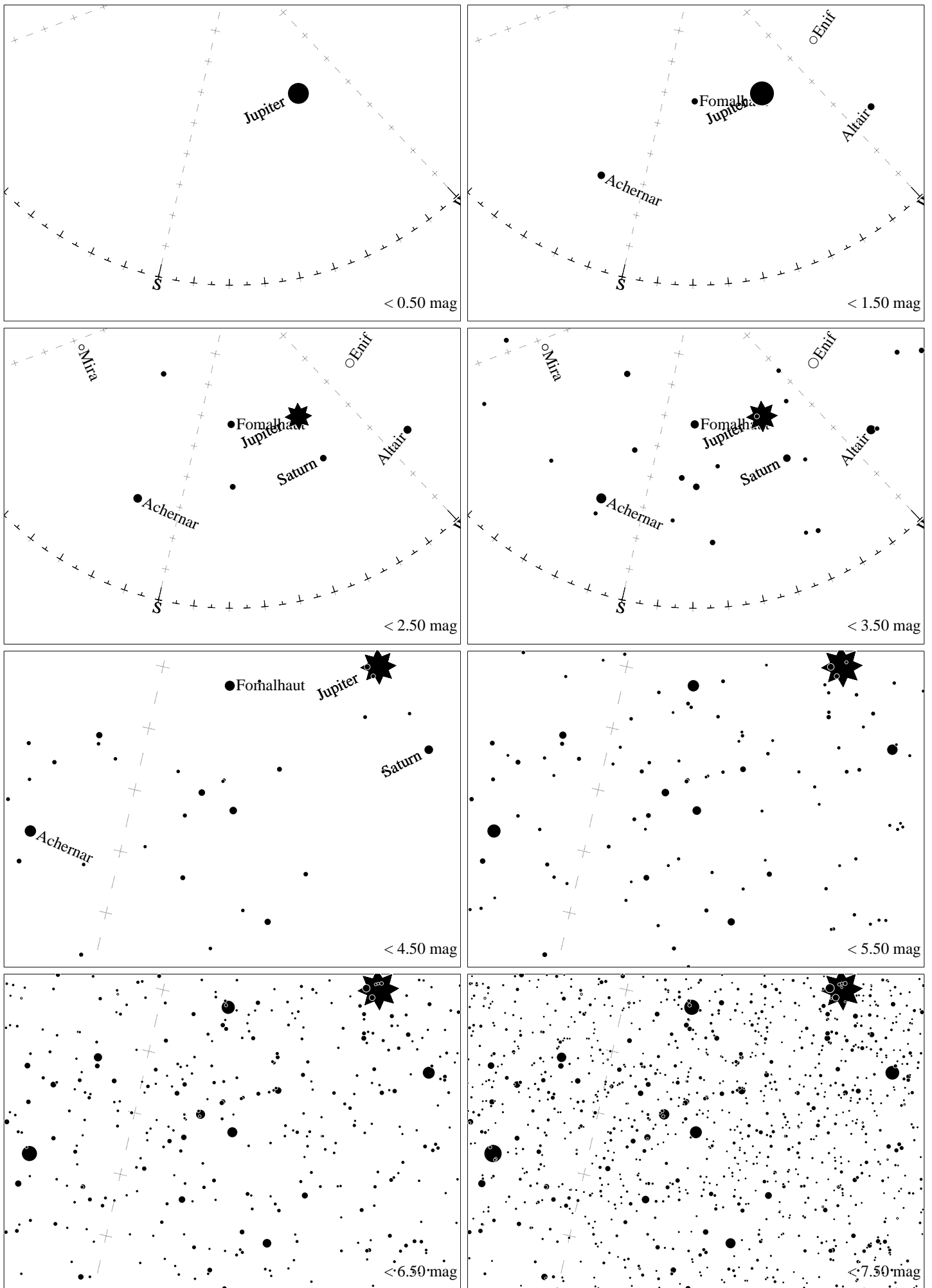
Maps for Globe at Night latitude 0° , 2021-09-03, 21 h local time (Sun at -45°), transparent air. Lines from N(E,S,W) to zenith shown (crosses each 10°). Centered on Albireo (β Cygni), 10° to the left from N, at 62° height, near the centre of Summer Triangle. Map vertical size is 50° . *Jan Hollan, CzechGlobe*



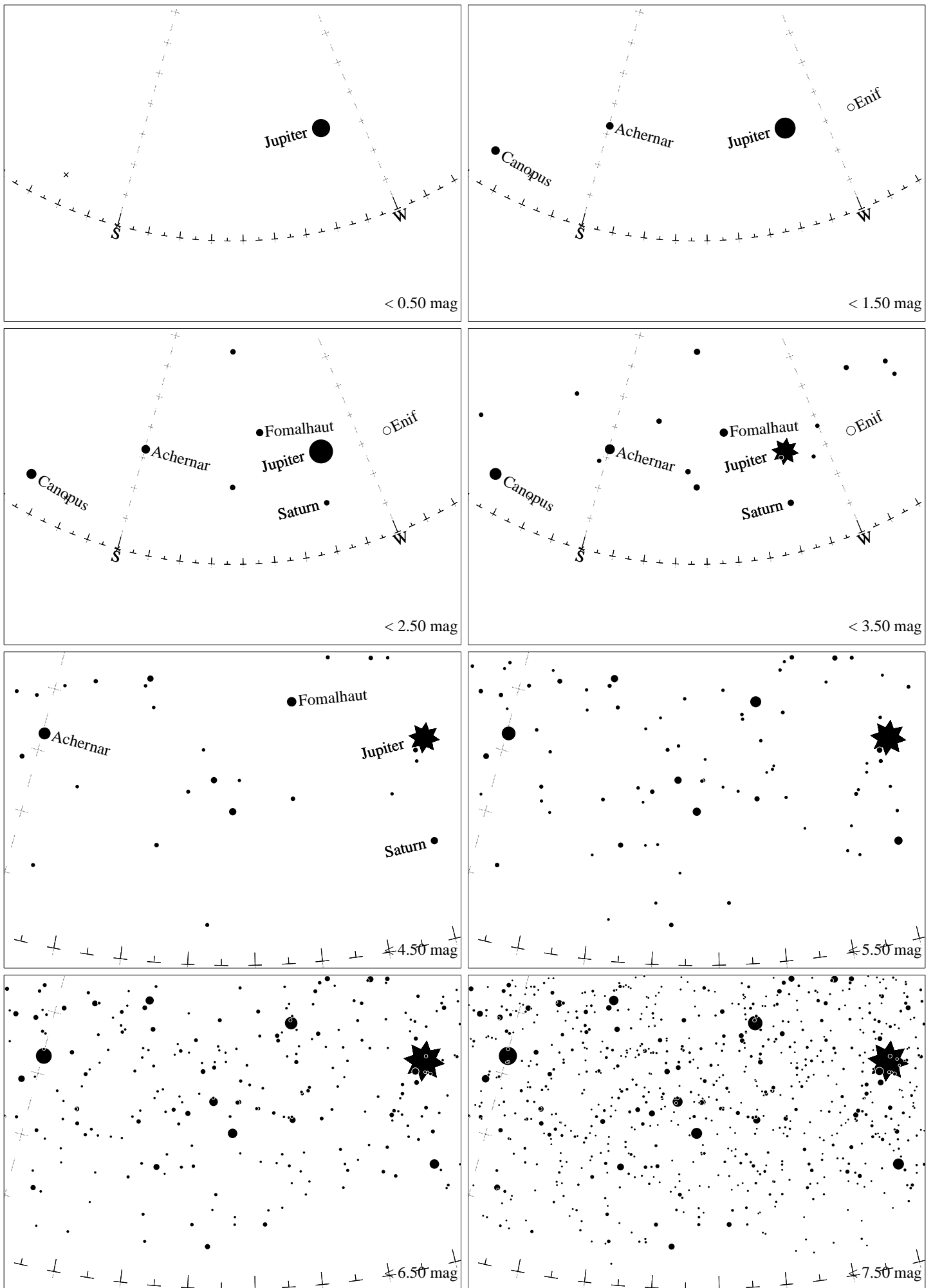
Maps for Globe at Night latitude 0° , 2021-10-02, 21 h local time (Sun at -48°), transparent air. Lines from N(E,S,W) to zenith shown (crosses each 10°). The map is centered on Markab (α Pegasi), which is 51° to the right from N, at 65° height. Detailed maps 50° vertically, the first four maps 100° . Jan Hollan, CzechGlobe



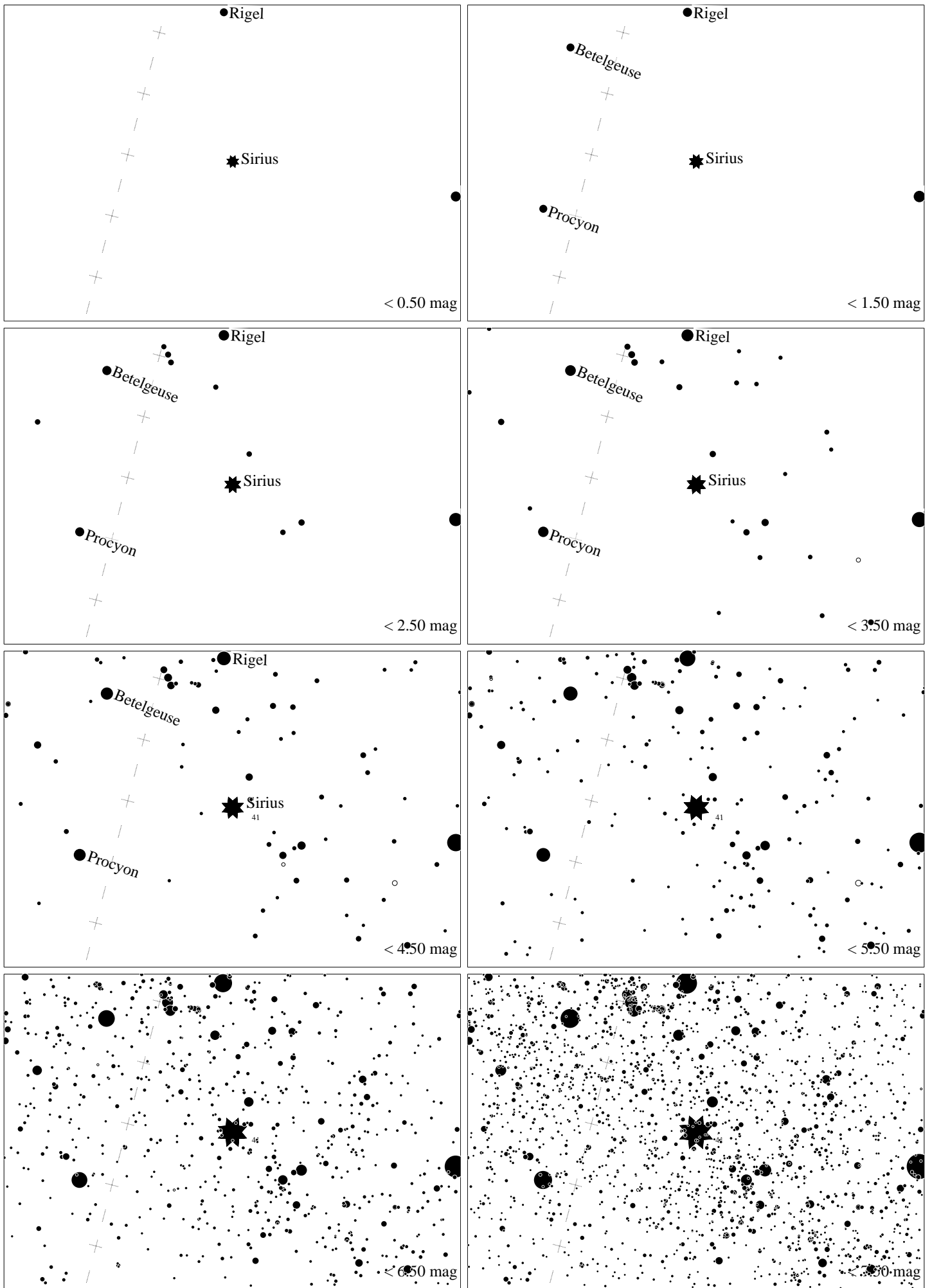
Maps for Globe at Night latitude 0° , 2021-10-02, 21 h local time (Sun at -48°), transparent air. Lines from N(E,S,W) to zenith shown (crosses each 10°). Centered on Kaus Australis (ϵ Sagittarii), which is 48° to the right from S, at 32° height. Detailed maps 50° vertically, the first four maps 100° . *Jan Hollan, CzechGlobe*



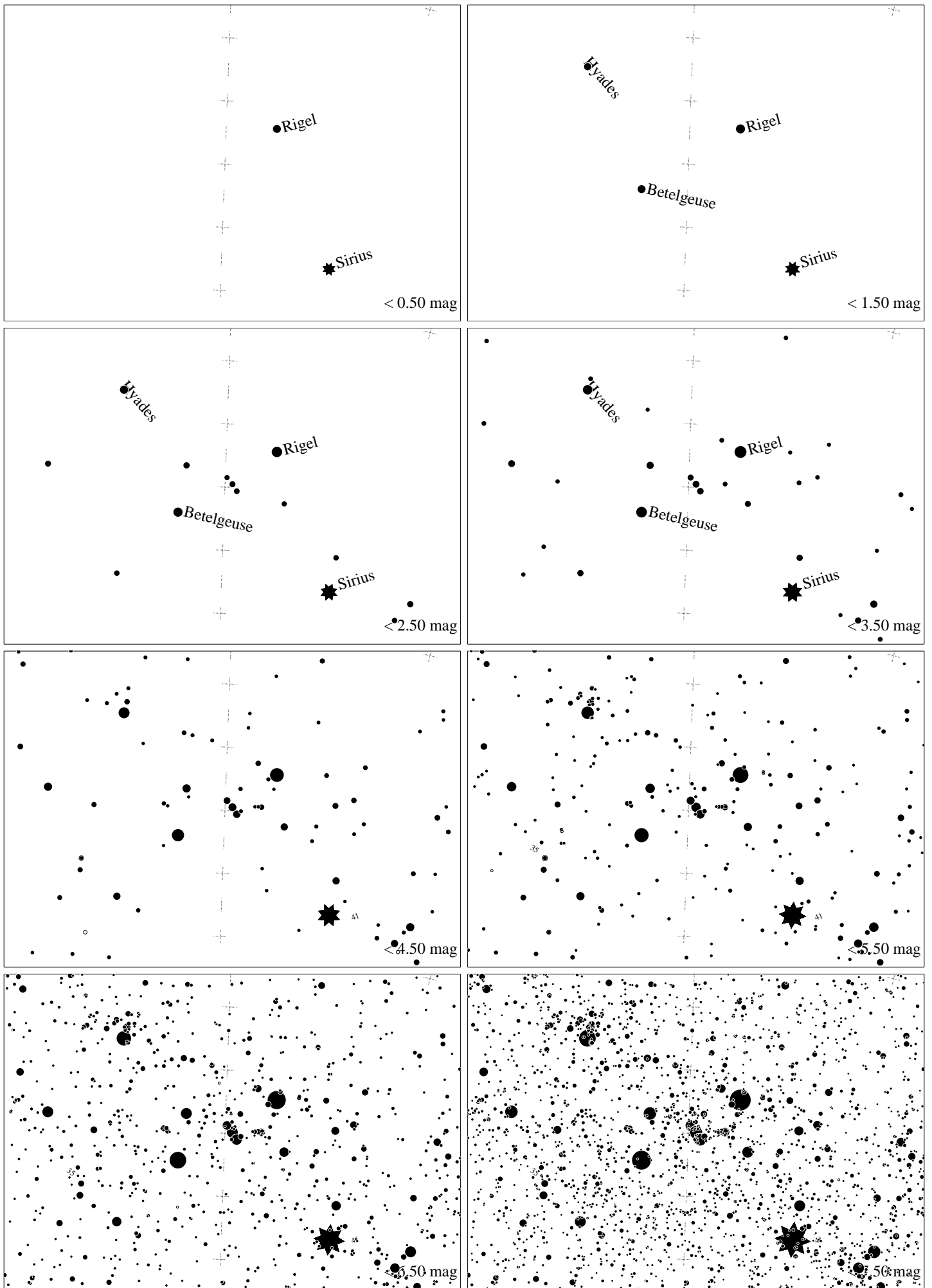
Maps for Globe at Night latitude 0° , 2021-11-01, 21:30 h local time (Sun at -47°), transparent air. Lines from N(E,S,W) to zenith shown (crosses each 10°). Centered on Alnair (α Gruis), which is 21° to the right from S, at 39° height. Detailed maps 50° vertically, the first four maps 100° . *Jan Hollan, CzechGlobe*



Maps for Globe at Night latitude 0° , 2021-11-30, 21:30 h local time (Sun at -43°), transparent air. Lines from N(E,S,W) to zenith shown (crosses each 10°). Centered on Alnair (α Gruis), which is 37° to the right from S, at 25° height. Detailed maps 50° vertically, the first four maps 100° . *Jan Hollan, CzechGlobe*



Maps for Globe at Night at latitude 0° , 2021-12-30, 21 h local time (Sun at -40°), transparent air. Lines from N(E,S,W) to zenith shown (crosses each 10°). The brightest fixed star Sirius is 68° to the left from S, at 41° height. Star cluster M 41 marked when appropriate. Map vertical size is 50° . *Jan Hollan, CzechGlobe*



Maps for Globe at Night at latitude 0° , 2021-12-30, 21 h local time (Sun at -40°), transparent air. Lines from N(E,S,W) to zenith shown (crosses each 10°). Orion's belt is 88° to the left from S, at 60° height. Star clusters M 41 and M35 marked when appropriate. Map vertical size is 50° . *Jan Hollan maps, CzechGlobe*