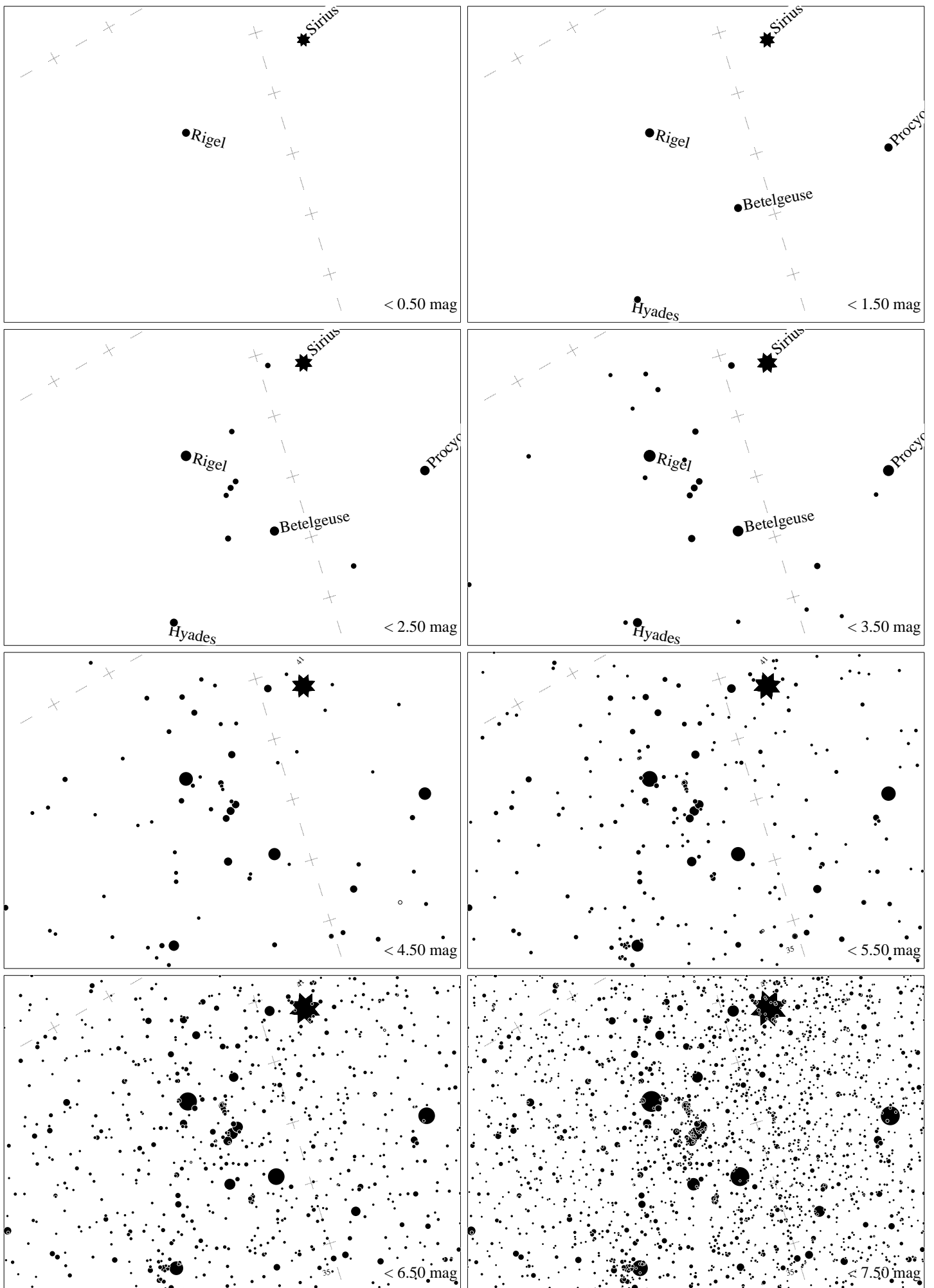
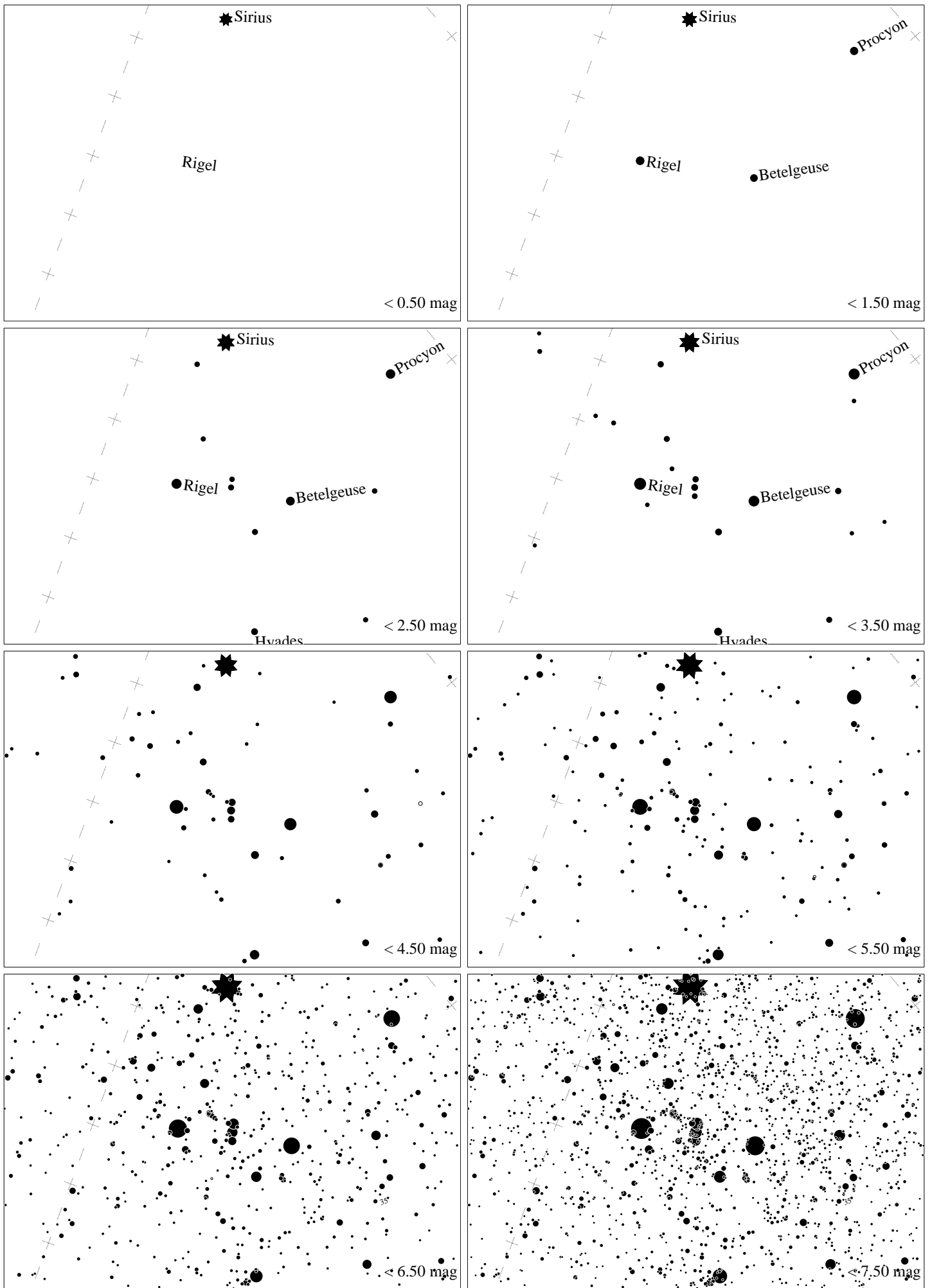


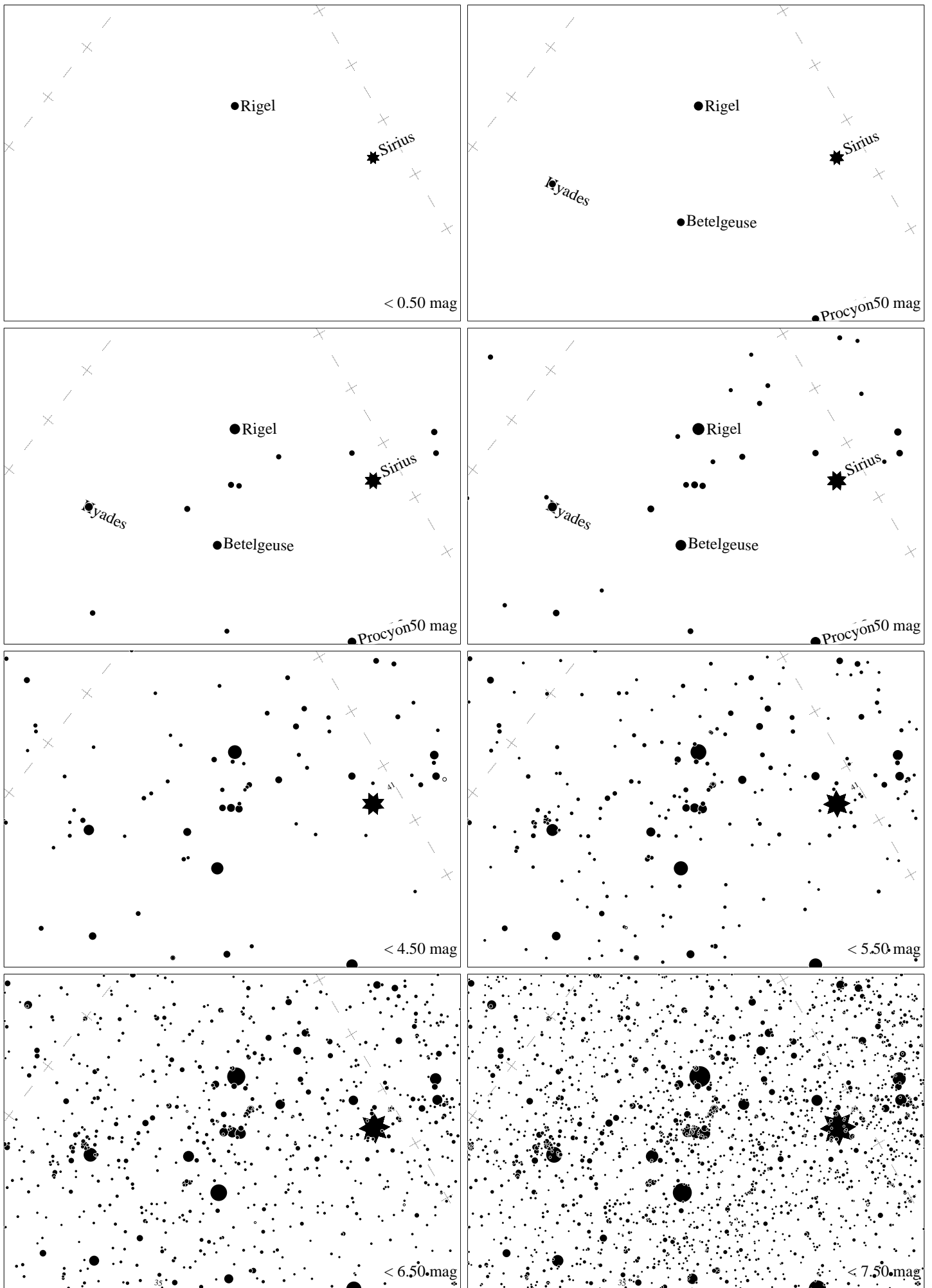
Maps for Globe at Night at latitude -30° , 2021-01-09, 21 h local time (Sun at -21°), transparent air. Lines from N(E,S,W) to zenith shown (crosses each 10°). Orion's belt is 37° to the right from N, at 56° height. Star clusters M 41 and M35 marked when appropriate. Map vertical size is 50° . *Jan Hollan maps, CzechGlobe*



Maps for Globe at Night at latitude -30° , 2021-02-08, 21 h local time (Sun at -25°), transparent air. Lines from N(E,S,W) to zenith shown (crosses each 10°). Orion's belt is 20° to the left from N, at 60° height. Star clusters M 41 and M35 marked when appropriate. Map vertical size is 50° . *Jan Hollan maps, CzechGlobe*



Maps for Globe at Night at latitude -30° , 2021-03-10, 21 h local time (Sun at -33°), transparent air. Lines from N(E,S,W) to zenith shown (crosses each 10°). Orion's belt is 60° to the left from N, at 43° height. Star clusters M 41 and M35 marked when appropriate. Map vertical size is 50° . *Jan Hollan maps, CzechGlobe*



Maps for Globe at Night at latitude -30° , 2021-12-30, 21 h local time (Sun at -21°), transparent air. Lines from N(E,S,W) to zenith shown (crosses each 10°). Orion's belt is 50° to the right from N, at 50° height. Star clusters M 41 and M35 marked when appropriate. Map vertical size is 50° . *Jan Hollan maps, CzechGlobe*