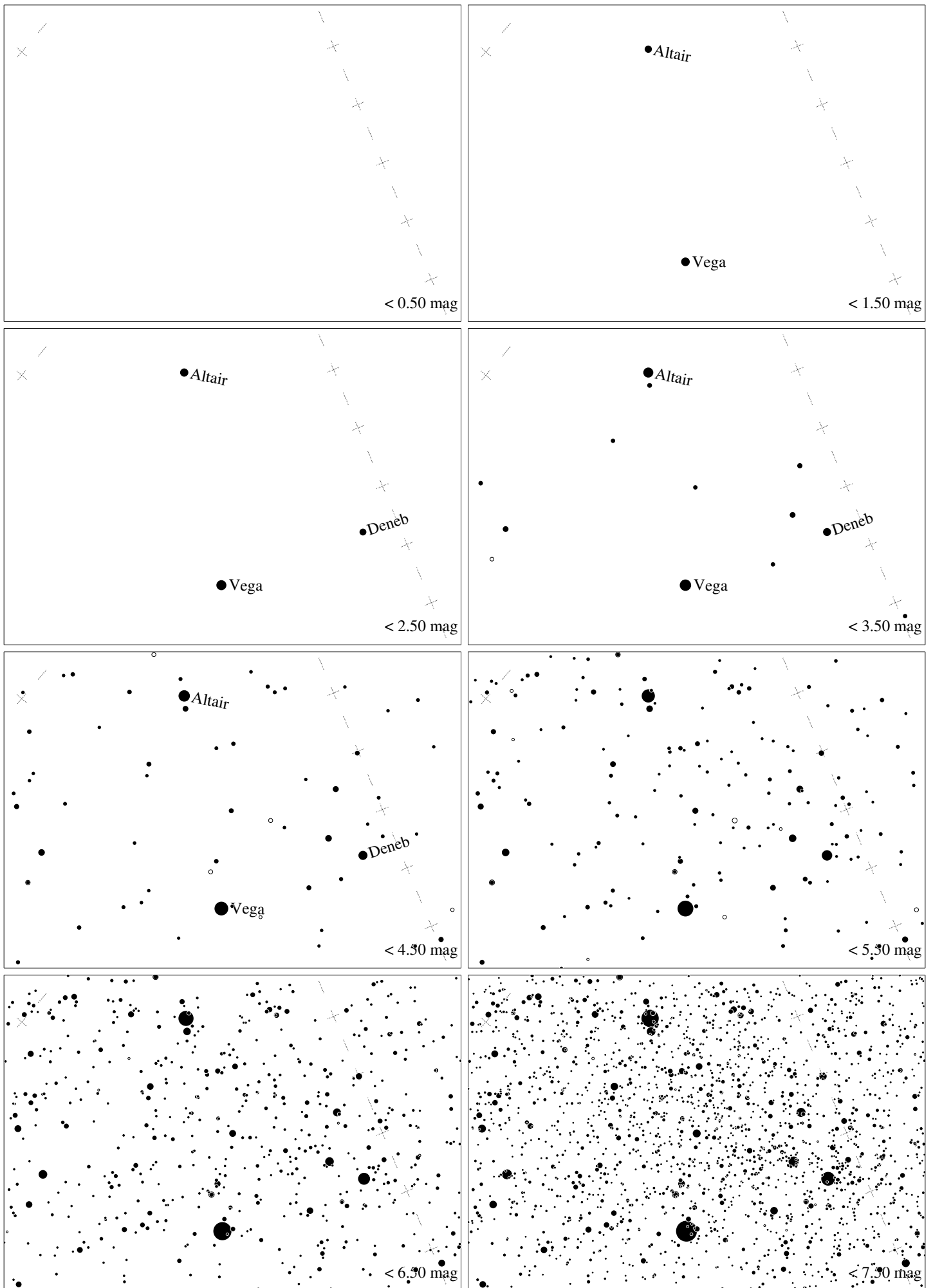


Maps for Globe at Night latitude  $-10^\circ$ , 2019-08-26, 21 h local time (Sun at  $-45^\circ$ ), transparent air. Lines from N(E,S,W) to zenith shown (crosses each  $10^\circ$ ). Centered on Albireo ( $\beta$  Cygni),  $4^\circ$  to the right from N, at  $52^\circ$  height, near the centre of Summer Triangle. Map vertical size is  $50^\circ$ . *Jan Hollan, CzechGlobe*



Maps for Globe at Night latitude  $-10^\circ$ , 2019-09-24, 21 h local time (Sun at  $-46^\circ$ ), transparent air. Lines from N(E,S,W) to zenith shown (crosses each  $10^\circ$ ). Centered on Albireo ( $\beta$  Cygni),  $32^\circ$  to the left from N, at  $45^\circ$  height, near the centre of Summer Triangle. Map vertical size is  $50^\circ$ . *Jan Hollan, CzechGlobe*