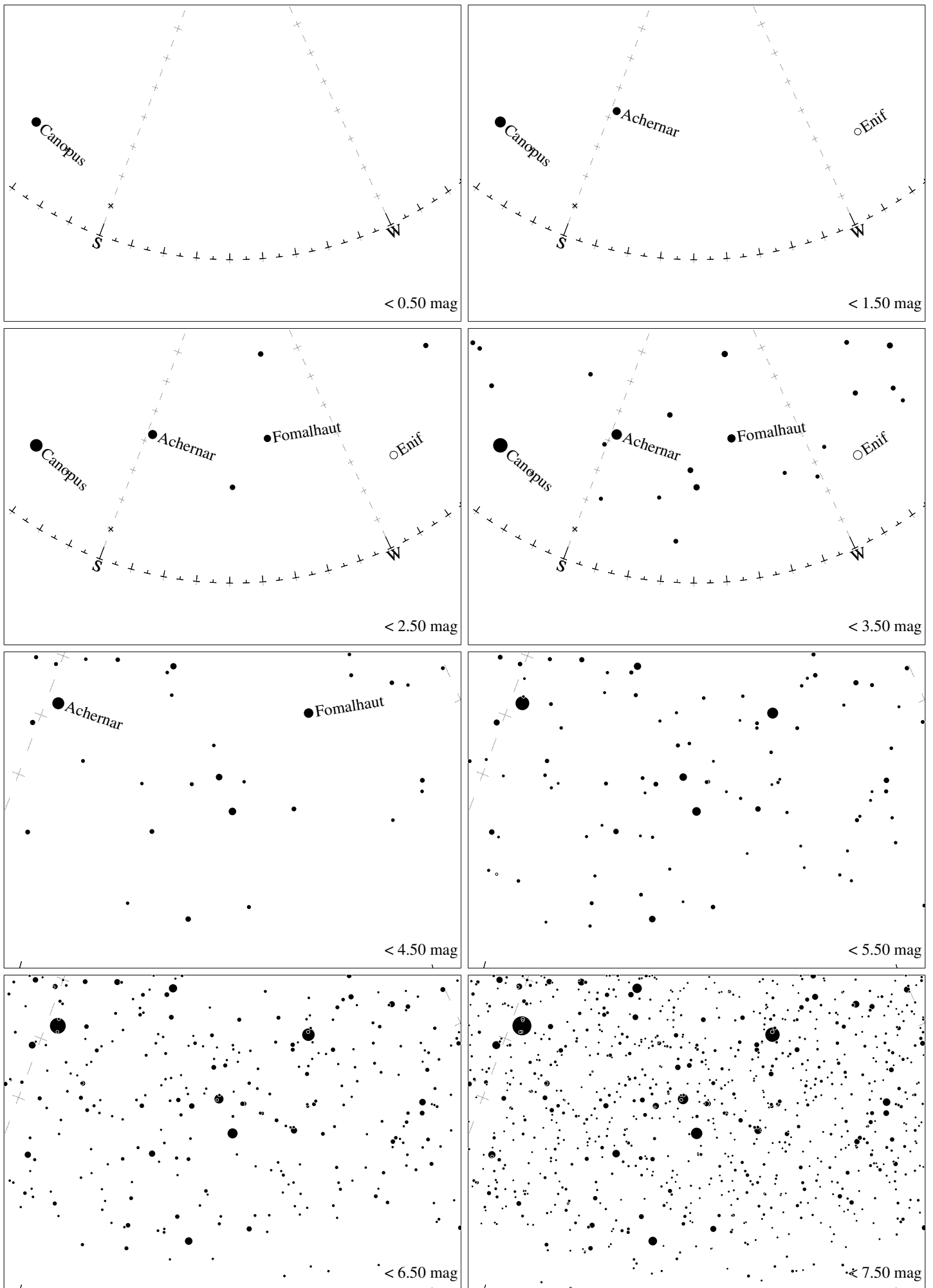
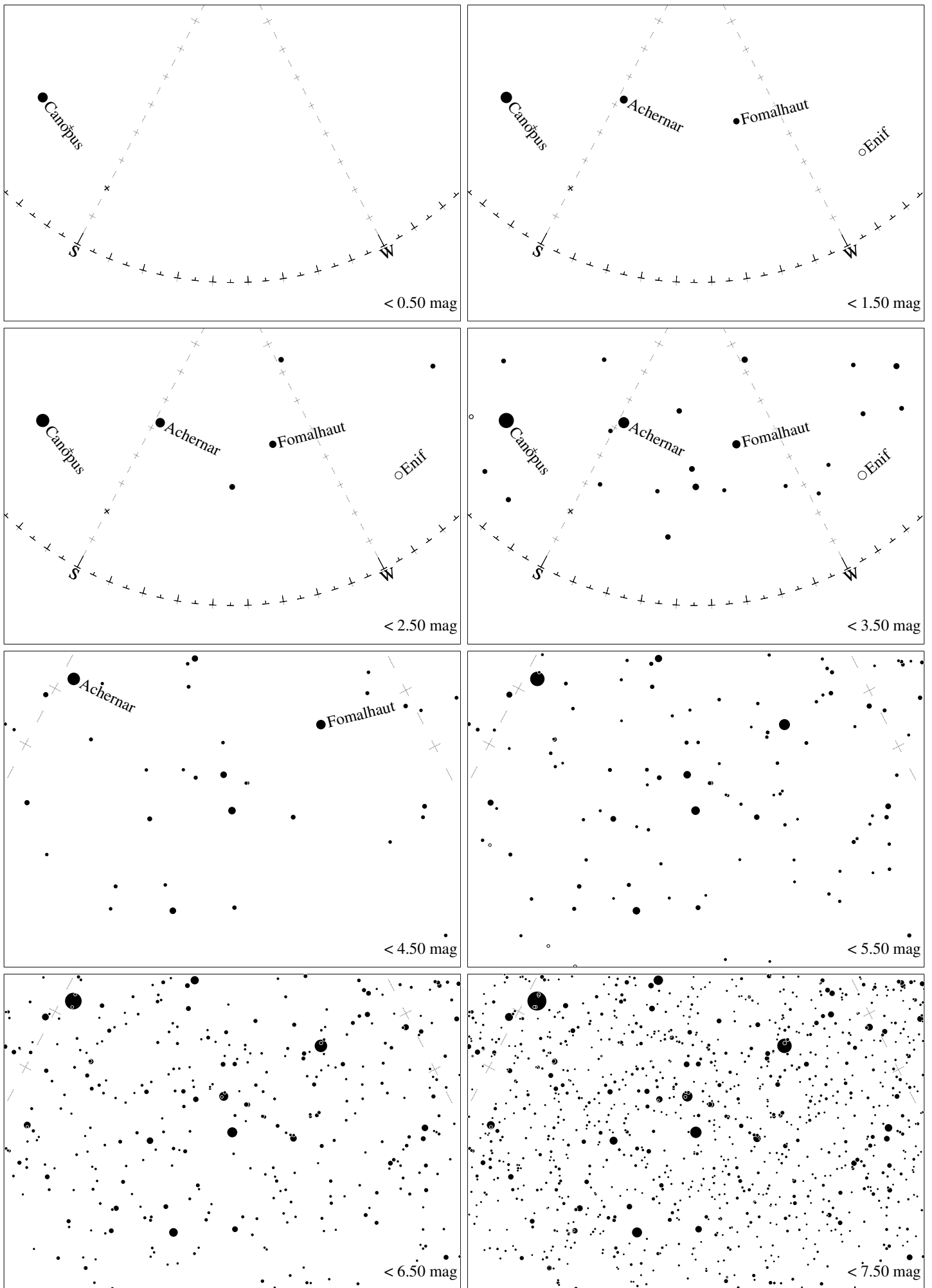


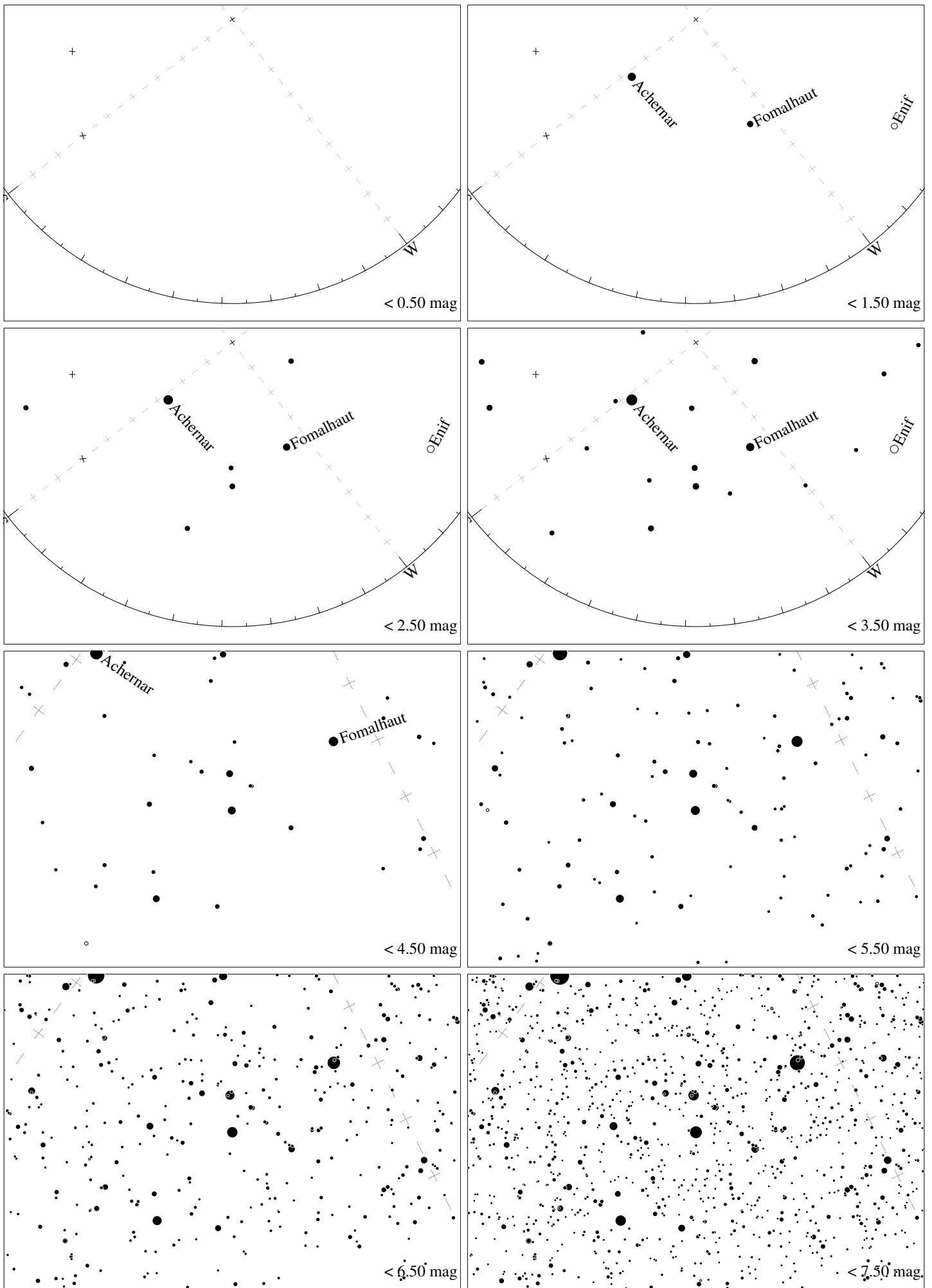
Maps for Globe at Night latitude 0° , 2017-12-03, 21:30 h local time (Sun at -43°), transparent air. Lines from N(E,S,W) to zenith shown (crosses each 10°). Centered on Alnair (α Grus), which is 38° to the right from S, at 23° height. Detailed maps 50° vertically, the first four maps 100° . *Jan Hollan, CzechGlobe*



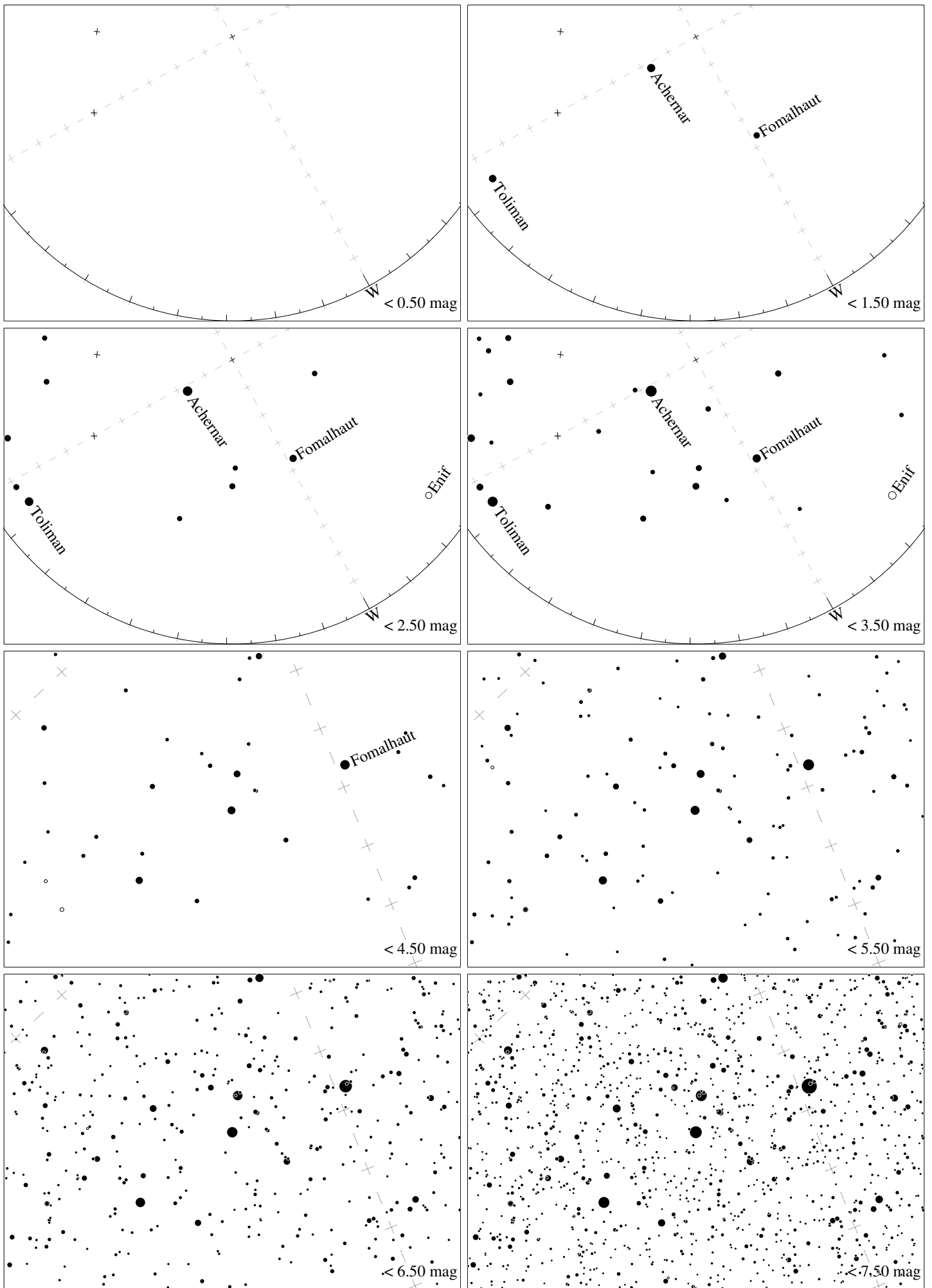
Maps for Globe at Night latitude -10° , 2017-12-03, 21:30 h local time (Sun at -37°), transparent air. Lines from N(E,S,W) to zenith shown (crosses each 10°). Centered on Alnair (α Gruis), which is 41° to the right from S, at 31° height. Detailed maps 50° vertically, the first four maps 100° . Jan Hollan, CzechGlobe



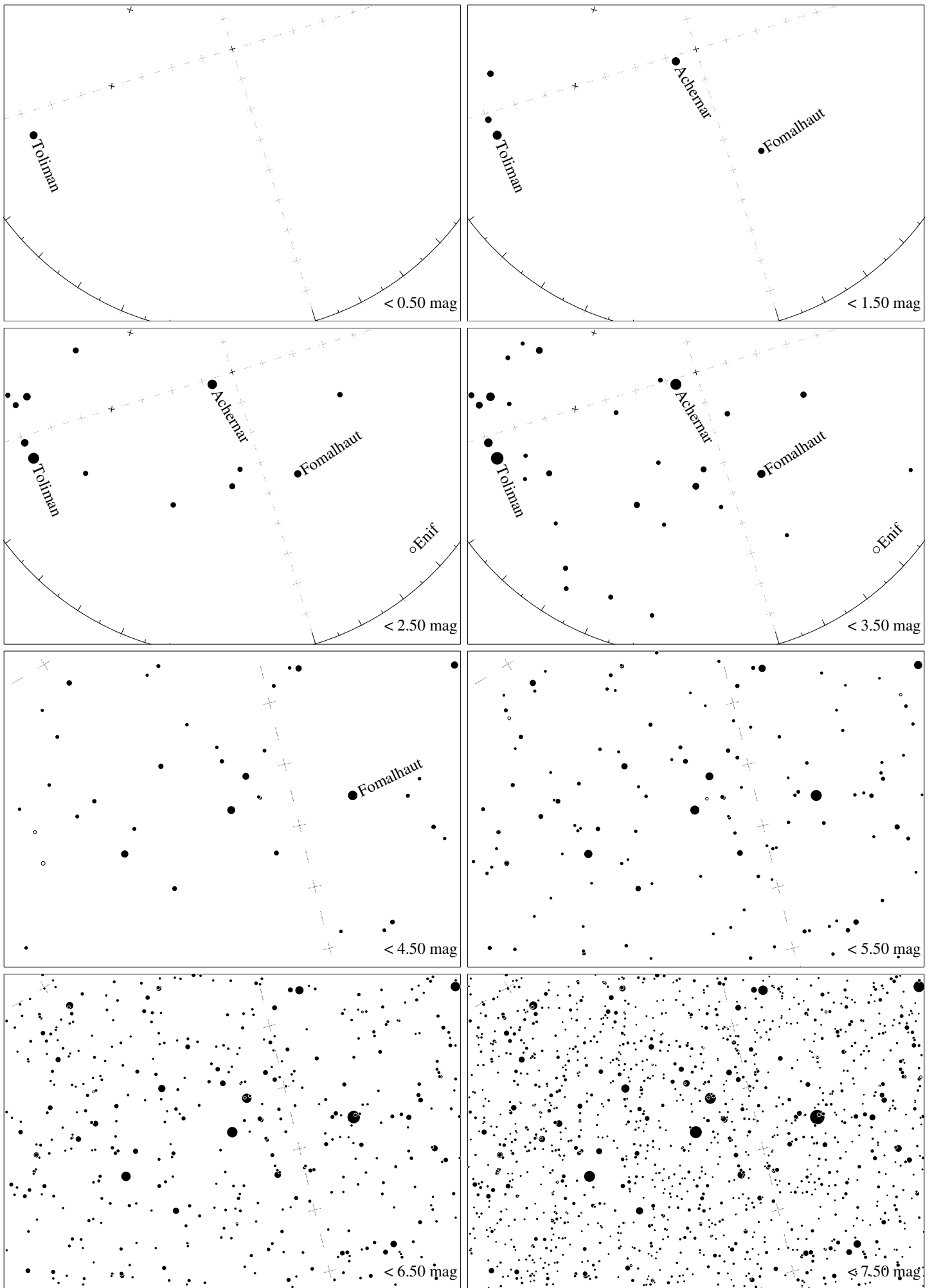
Maps for Globe at Night latitude -20° , 2017-12-03, 21:30 h local time (Sun at -31°), transparent air. Lines from N(E,S,W) to zenith shown (crosses each 10°). Centered on Alnair (α Gruis), which is 46° to the right from S, at 38° height. Detailed maps 50° vertically, the first four maps 100° . *Jan Hollan, CzechGlobe*



Maps for Globe at Night latitude -30° , 2017-12-03, 21:30 h local time (Sun at -24°), transparent air. Lines from N(E,S,W) to zenith shown (crosses each 10°). Centered on Alnair (α Gruis), which is 52° to the right from S, at 44° height. Detailed maps 50° vertically, the first four maps 100° . *Jan Hollan, CzechGlobe*



Maps for Globe at Night latitude -40° , 2017-12-03, 21:30 h local time (Sun at -16°), transparent air. Lines from N(E,S,W) to zenith shown (crosses each 10°). Centered on Alnair (α Gruis), which is 61° to the right from S, at 50° height. Detailed maps 50° vertically, the first four maps 100° . Jan Hollan, CzechGlobe



Maps for Globe at Night latitude -50° , 2017-12-03, 21:30 h local time (Sun at -9°), transparent air. Lines from N(E,S,W) to zenith shown (crosses each 10°). Centered on Alnair (α Crux), which is 73° to the right from S, at 54° height. Detailed maps 50° vertically, the first four maps 100° . *Jan Hollan, CzechGlobe*