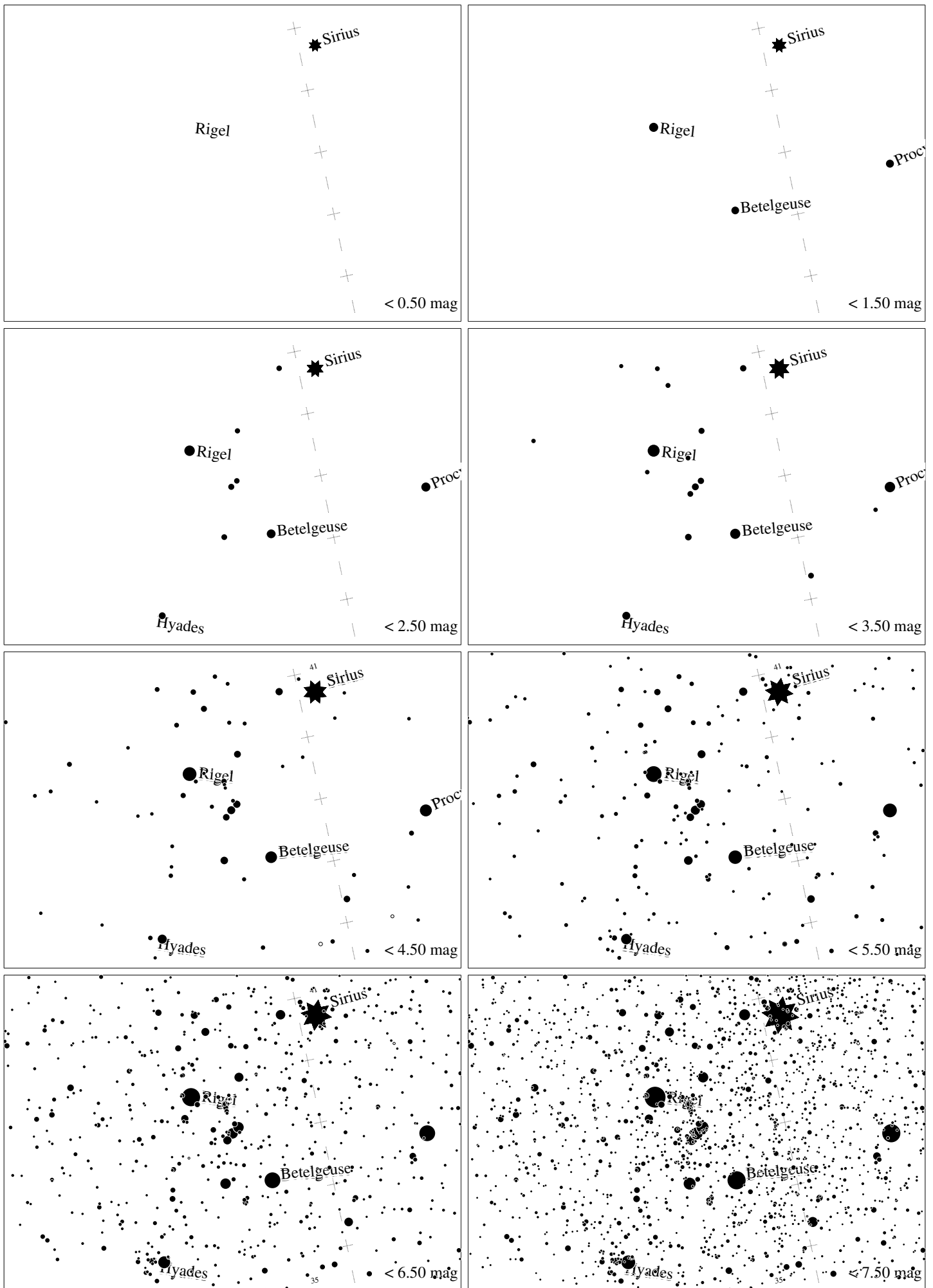
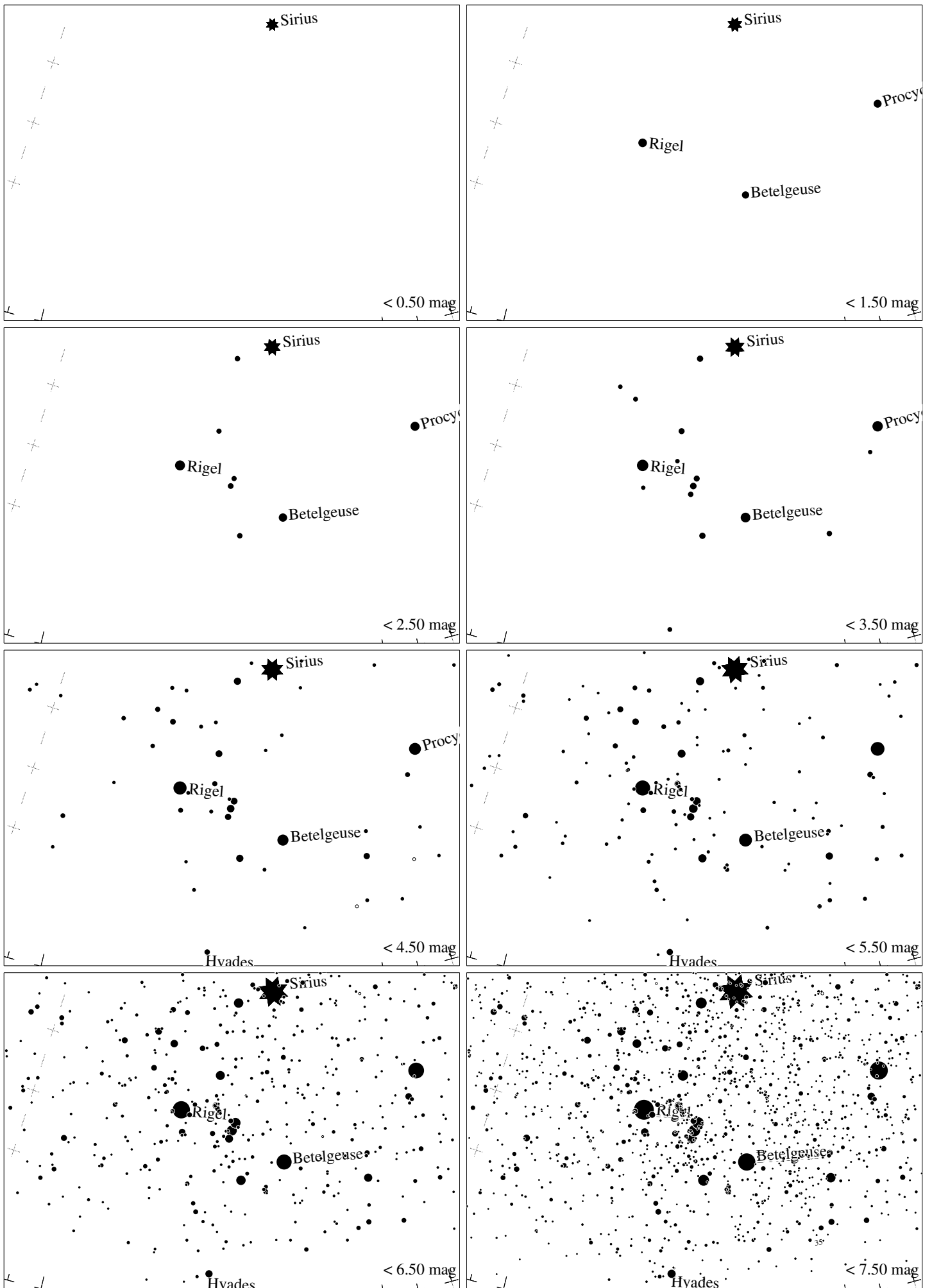


Maps for Globe at Night at latitude -50° , 2015-01-15, 21 h local time (Sun at -8°), transparent air. Lines from N(E,S,W) to zenith shown (crosses each 10°). Orion's belt is 19° to the right from N, at 40° height. The brightest fixed star is Sirius. Map vertical size is 50° . *Jan Hollan, CzechGlobe*



Maps for Globe at Night at latitude -50° , 2015-02-13, 21 h local time (Sun at -14°), transparent air. Lines from N(E,S,W) to zenith shown (crosses each 10°). Orion's belt is 19° to the left from N, at 40° height. The brightest fixed star is Sirius. Map vertical size is 50° . *Jan Hollan, CzechGlobe*



Maps for Globe at Night at latitude -50° , 2015-03-15, 21 h local time (Sun at -24°), transparent air. Lines from N(E,S,W) to zenith shown (crosses each 10°). Orion's belt is 52° to the left from N, at 29° height. The brightest fixed star is Sirius. Map vertical size is 50° . *Jan Hollan, CzechGlobe*