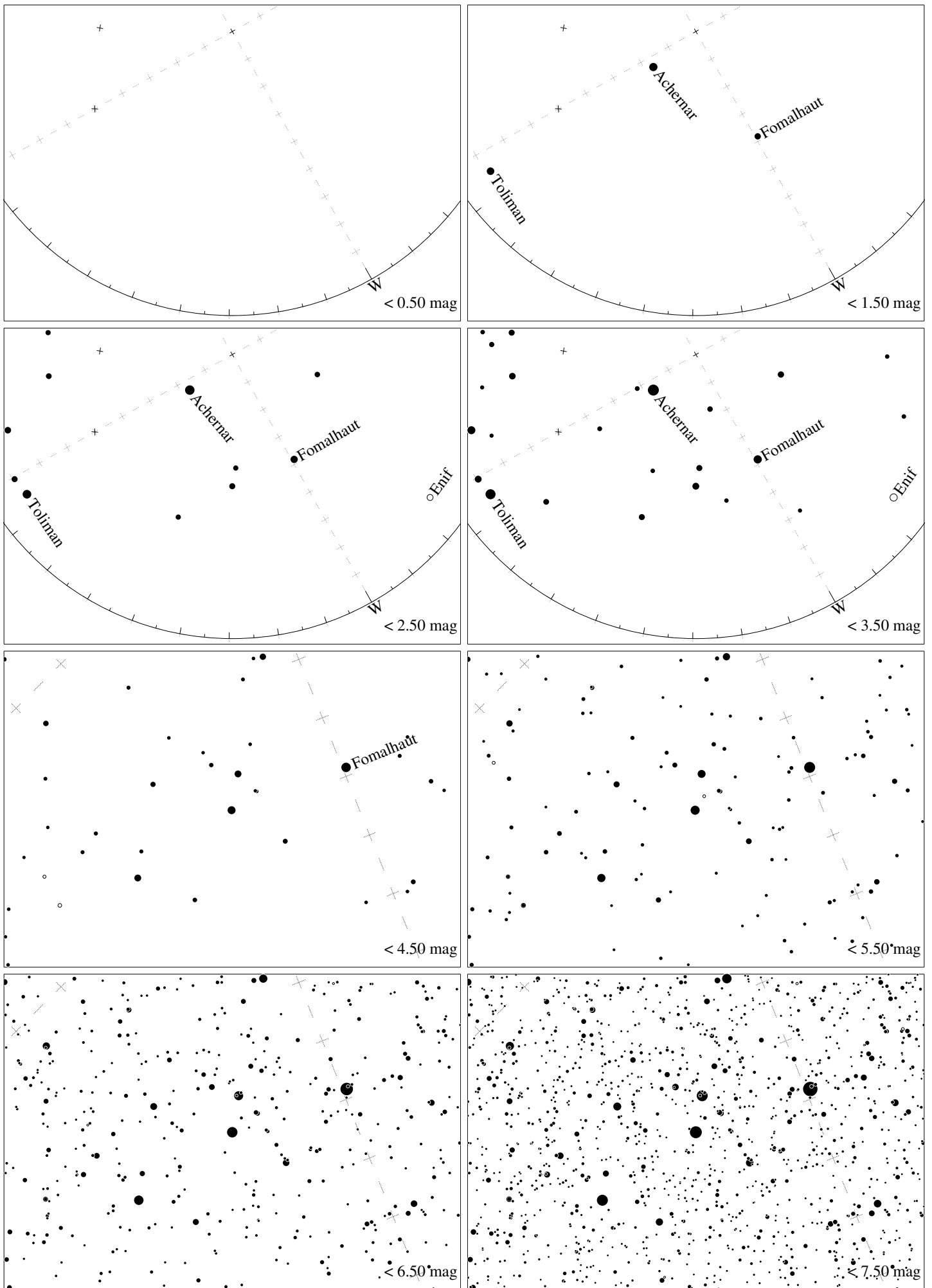


Maps for Globe at Night latitude -40° , 2015-11-06, 21 h local time (Sun at -22°), transparent air. Lines from N(E,S,W) to zenith shown (crosses each 10°). Centered on Alnair (α Gruis), which is 62° to the right from S, at 68° height. Detailed maps 50° vertically, the first four maps 100° . *Jan Hollan, CzechGlobe*



Maps for Globe at Night latitude -40° , 2015-12-06, 21 h local time (Sun at -16°), transparent air. Lines from N(E,S,W) to zenith shown (crosses each 10°). Centered on Alnair (α Gruis), which is 61° to the right from S, at 48° height. Detailed maps 50° vertically, the first four maps 100° . *Jan Hollan, CzechGlobe*