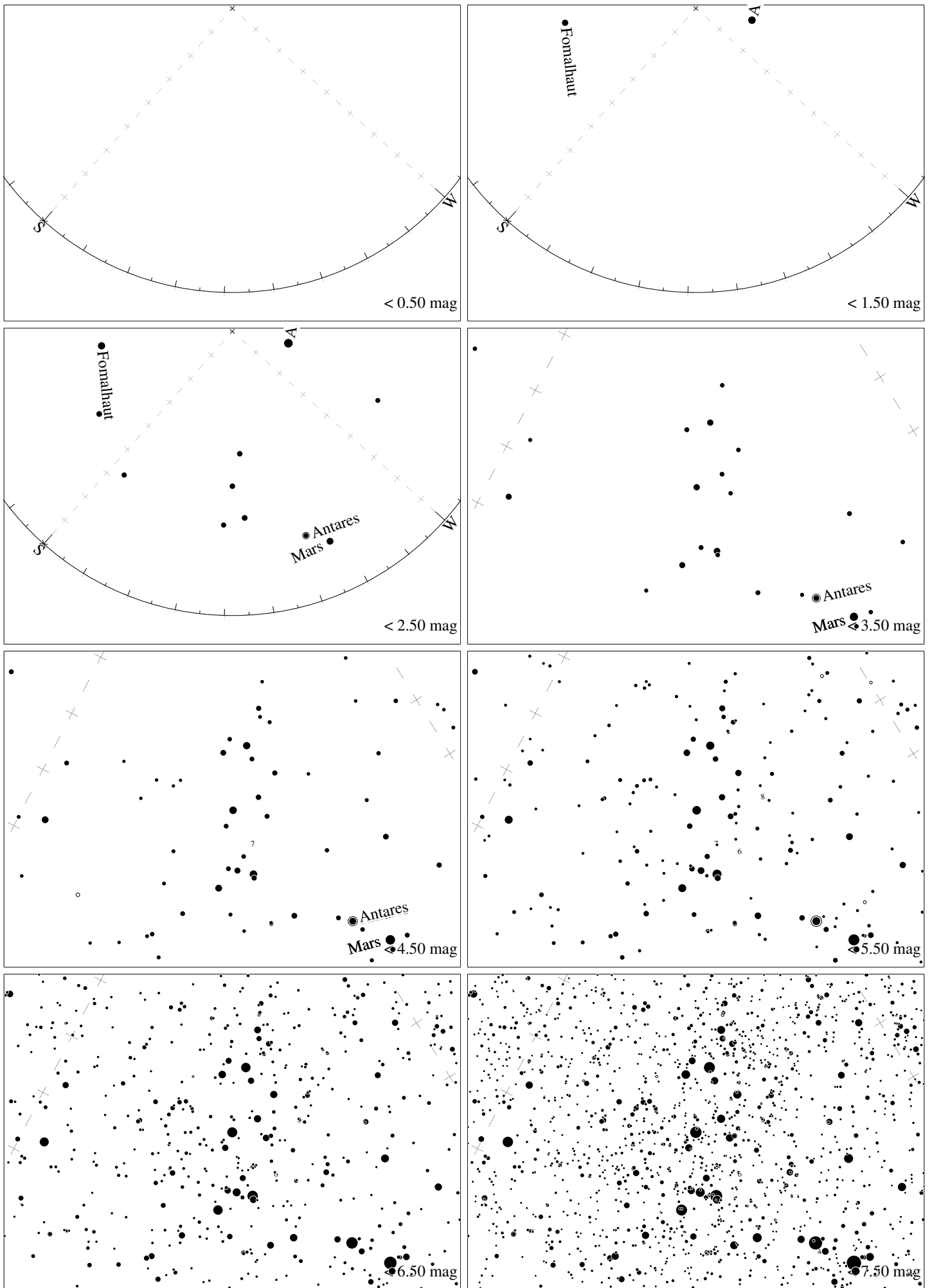
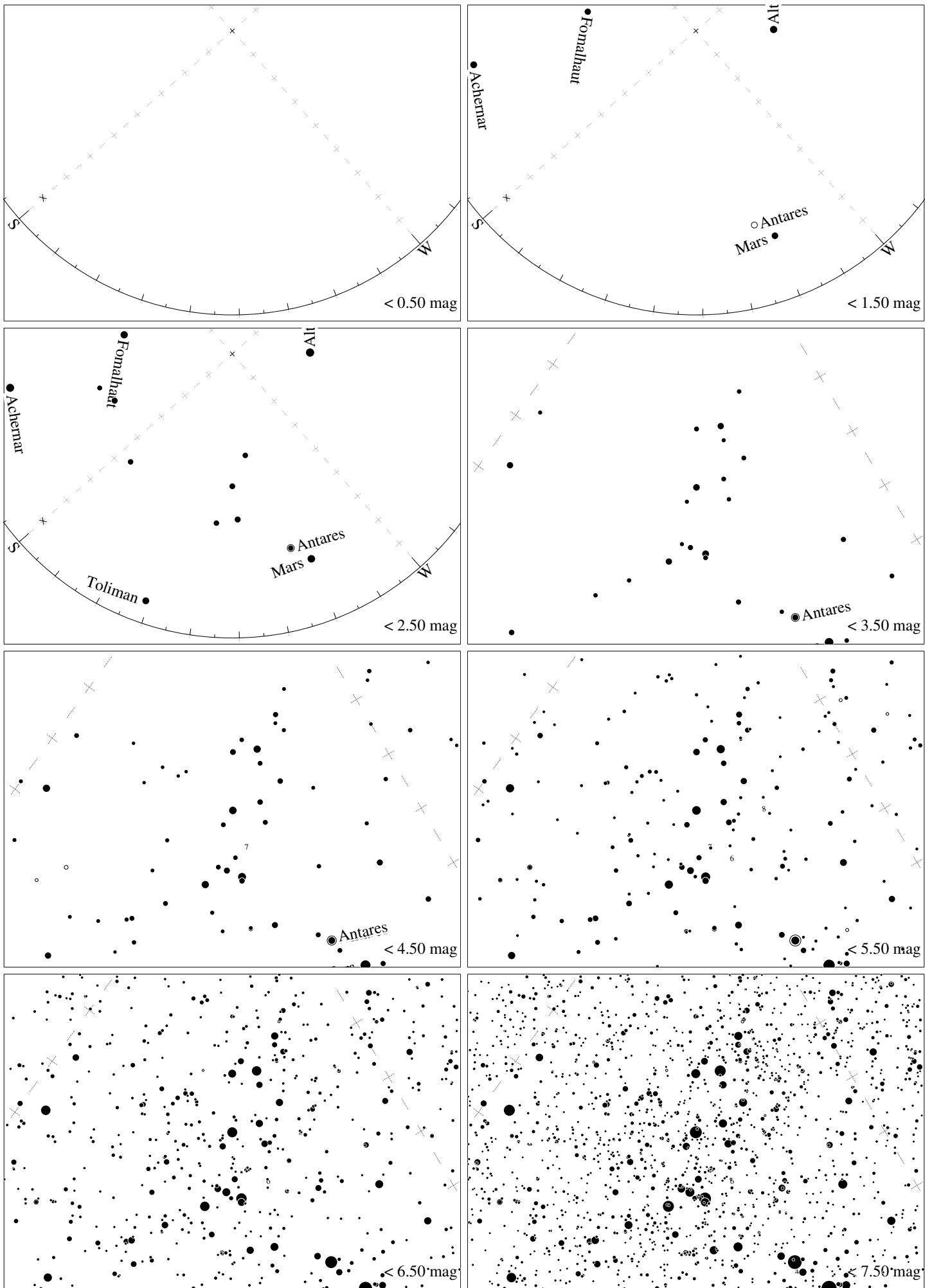


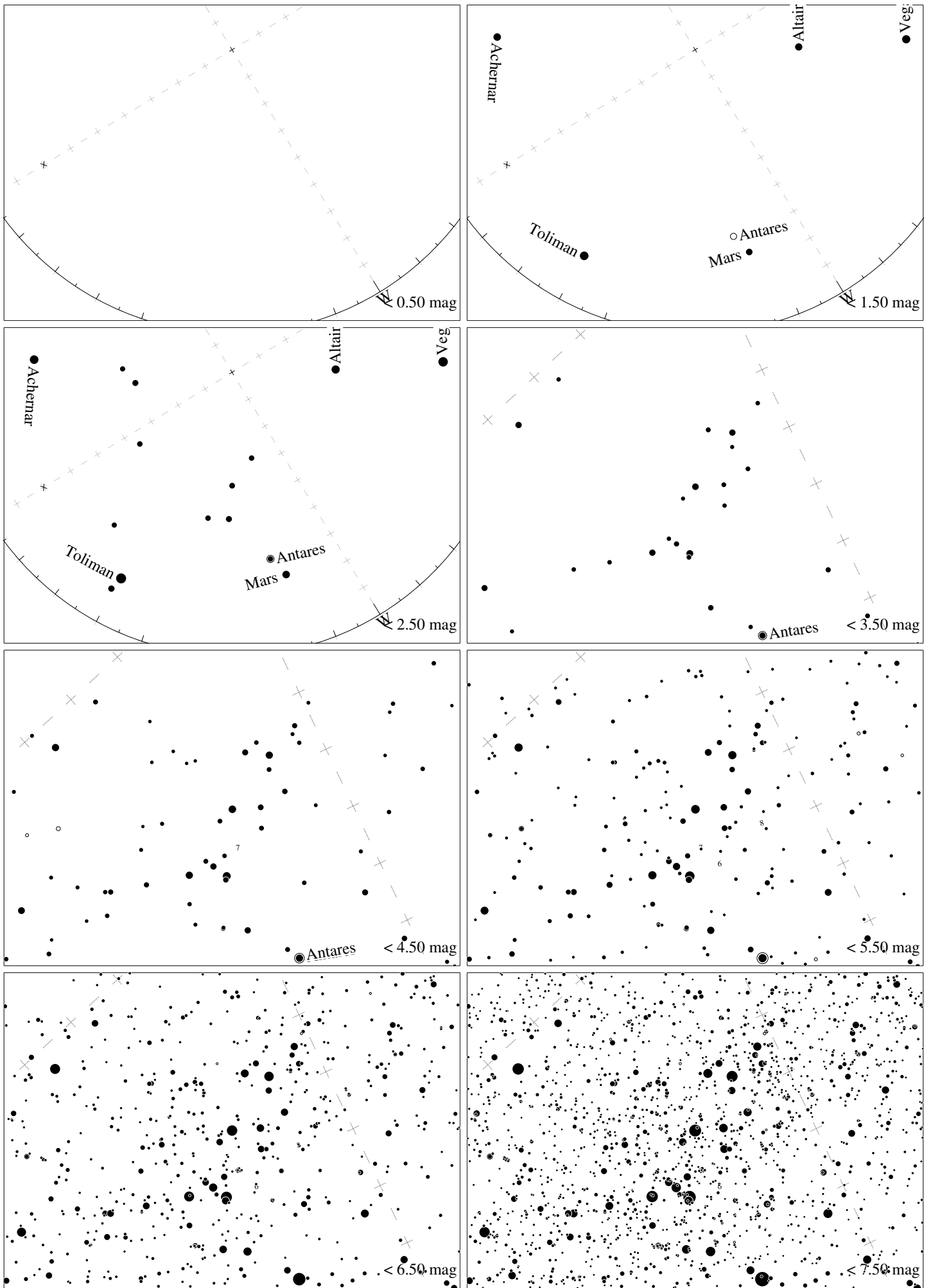
Maps for Globe at Night latitude 10° , 2014-09-19, 21 h local time (Sun at -45°), transparent air. Lines from N(E,S,W) to zenith shown (crosses each 10°). Centered at Kaus Australis (ϵ Sagittarii), which is 37° to the right from S, at 33° height. Detailed maps 50° vertically, the first three maps 100° . *Jan Hollan, CzechGlobe*



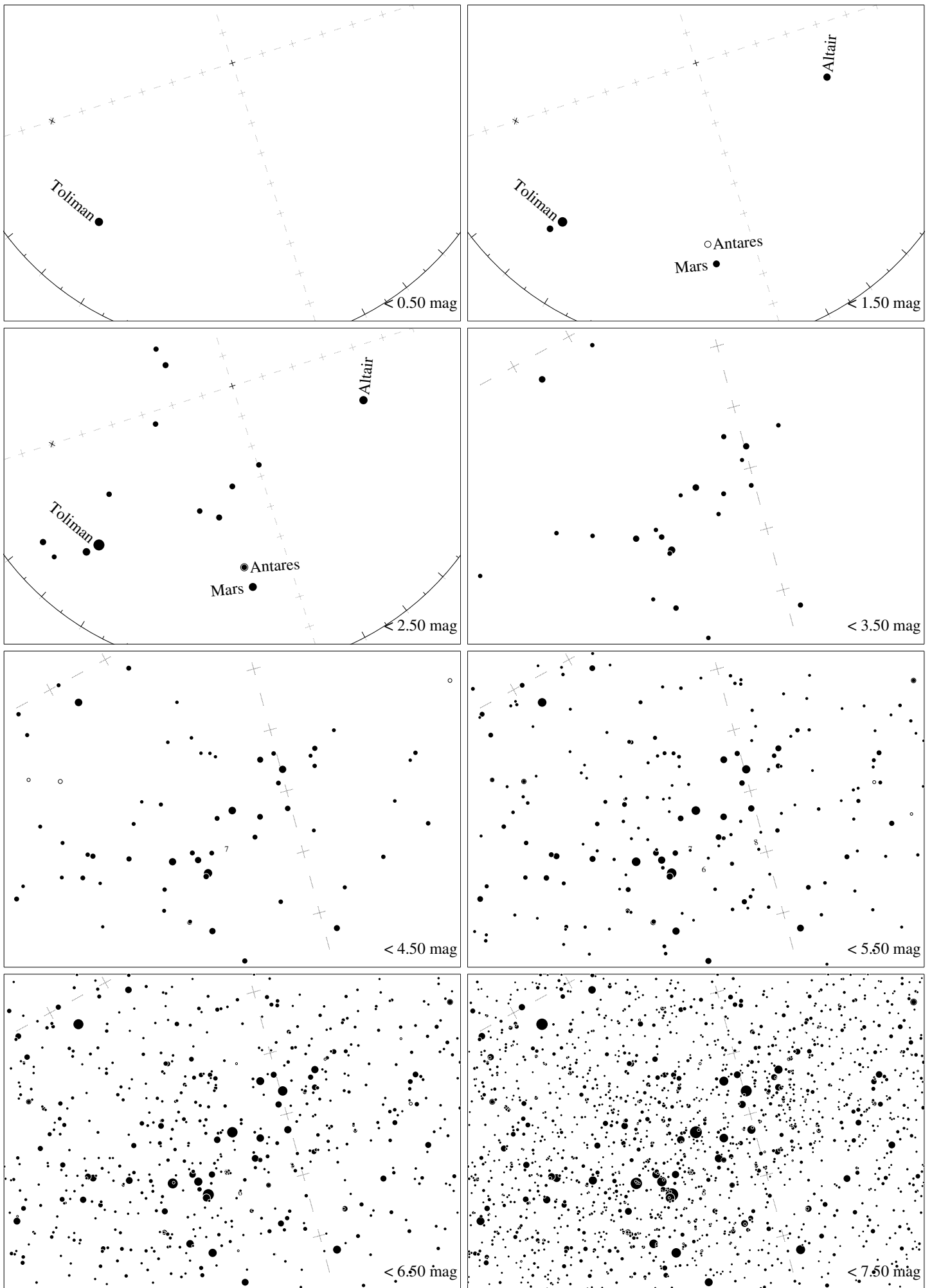
Maps for Globe at Night latitude 0°, 2014-09-19, 21 h local time (Sun at -47°), transparent air. Lines from N(E,S,W) to zenith shown (crosses each 10°). Centered at Kaus Australis (ϵ Sagittarii), which is 42° to the right from S, at 41° height. Detailed maps 50° vertically, the first three maps 100° . *Jan Hollan, CzechGlobe*



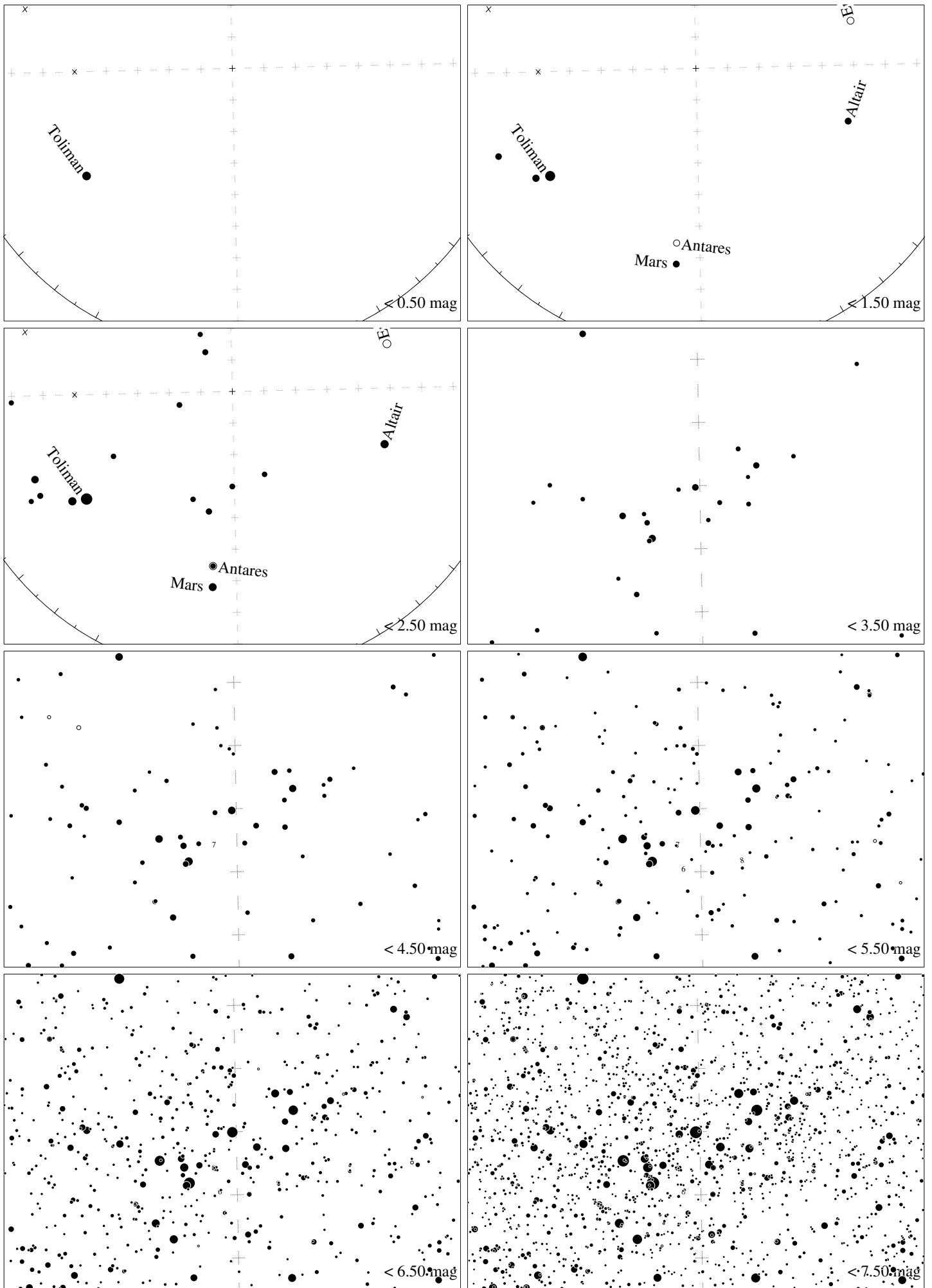
Maps for Globe at Night latitude -10° , 2014-09-19, 21 h local time (Sun at -46°), transparent air. Lines from N(E,S,W) to zenith shown (crosses each 10°). Centered at Kaus Australis (ϵ Sagittarii), which is 49° to the right from S, at 48° height. Detailed maps 50° vertically, the first three maps 100° . *Jan Hollan, CzechGlobe*



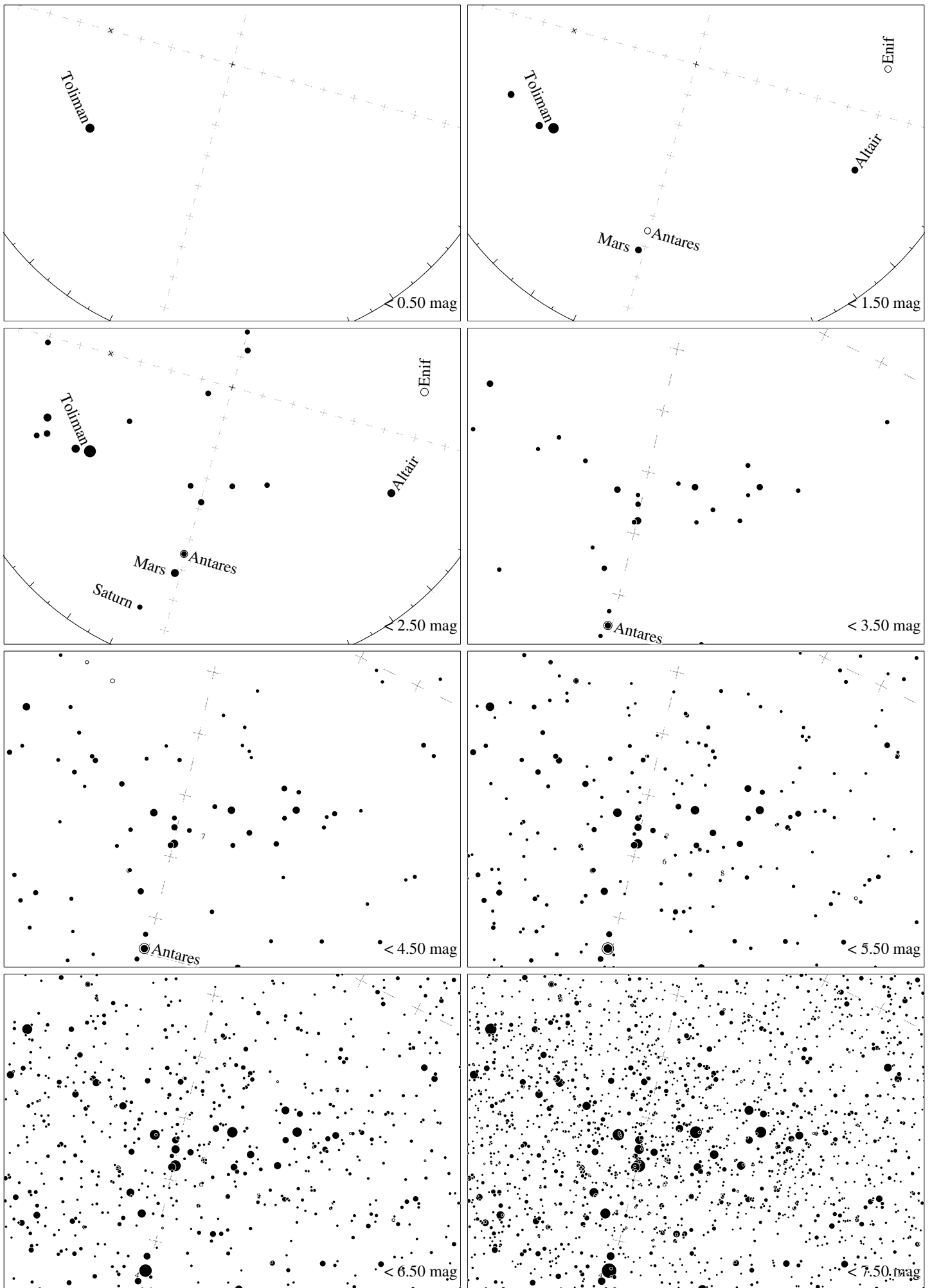
Maps for Globe at Night latitude -20° , 2014-09-19, 21 h local time (Sun at -44°), transparent air. Lines from N(E,S,W) to zenith shown (crosses each 10°). Centered at Kaus Australis (ϵ Sagittarii), which is 59° to the right from S, at 54° height. Detailed maps 50° vertically, the first three maps 100° . *Jan Hollan, CzechGlobe*



Maps for Globe at Night latitude -30° , 2014-09-19, 21 h local time (Sun at -40°), transparent air. Lines from N(E,S,W) to zenith shown (crosses each 10°). Centered at Kaus Australis (ϵ Sagittarii), which is 72° to the right from S, at 58° height. Detailed maps 50° vertically, the first three maps 100° . *Jan Hollan, CzechGlobe*



Maps for Globe at Night latitude -40° , 2014-09-19, 21 h local time (Sun at -35°), transparent air. Lines from N(E,S,W) to zenith shown (crosses each 10°). Centered at Kaus Australis (ϵ Sagittarii), which is 89° to the right from S, at 60° height. Detailed maps 50° vertically, the first three maps 100° . *Jan Hollan, CzechGlobe*



Maps for Globe at Night latitude -50° , 2014-09-19, 21 h local time (Sun at -29°), transparent air. Lines from N(E,S,W) to zenith shown (crosses each 10°). Centered at Kaus Australis (ϵ Sagittarii), which is 74° to the left from N, at 59° height. Detailed maps 50° vertically, the first three maps 100° . *Jan Hollan, CzechGlobe*