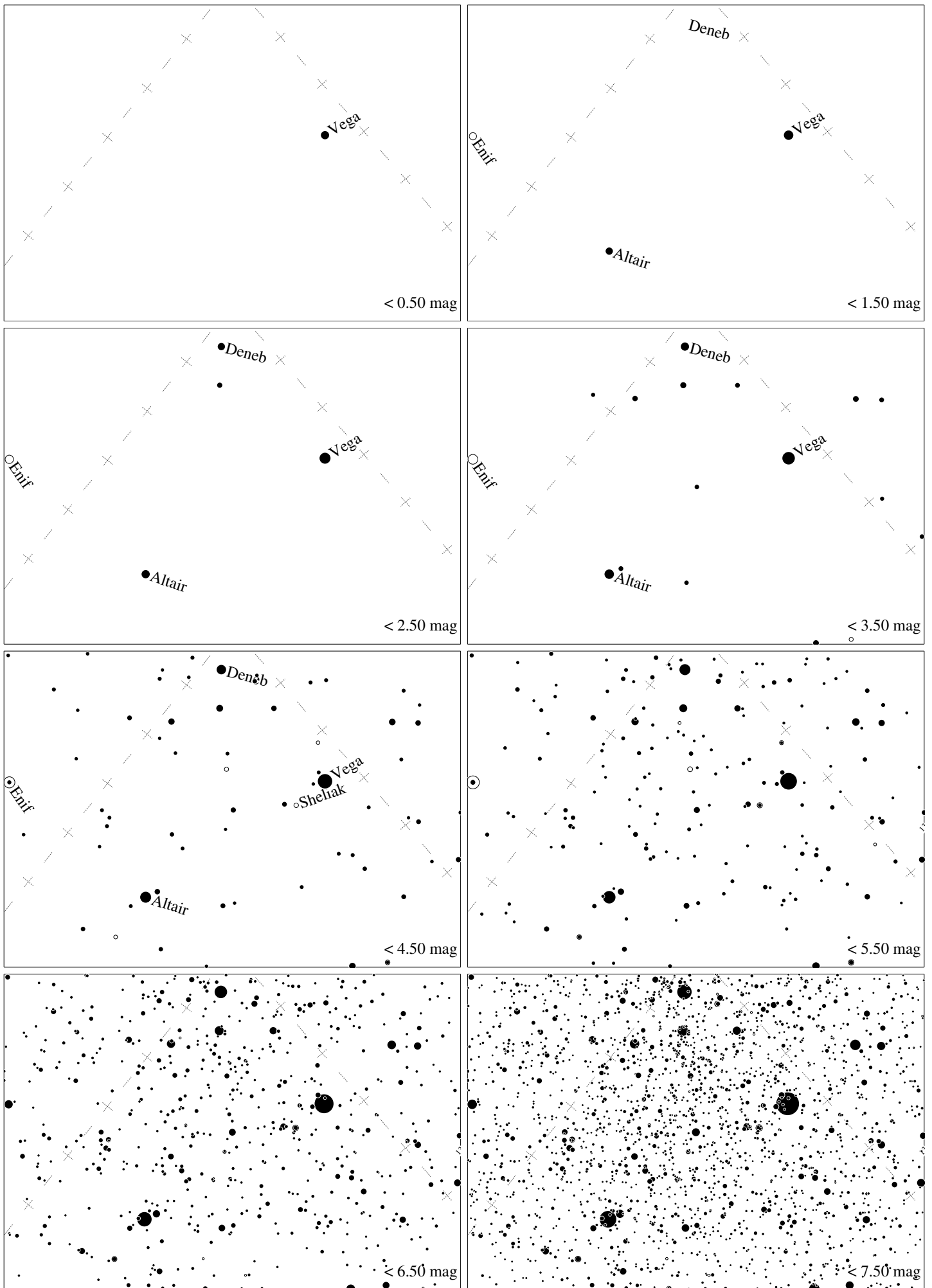
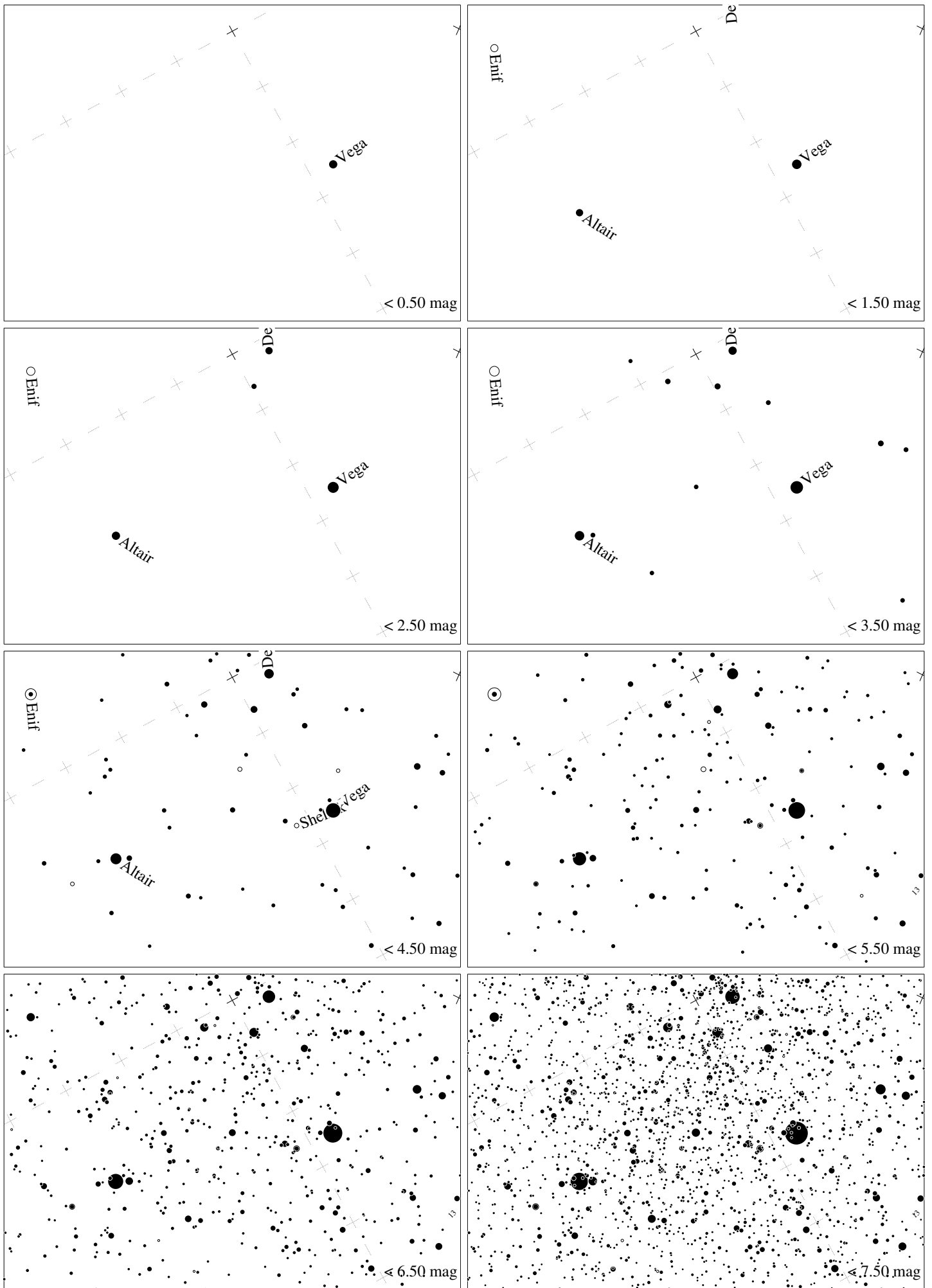


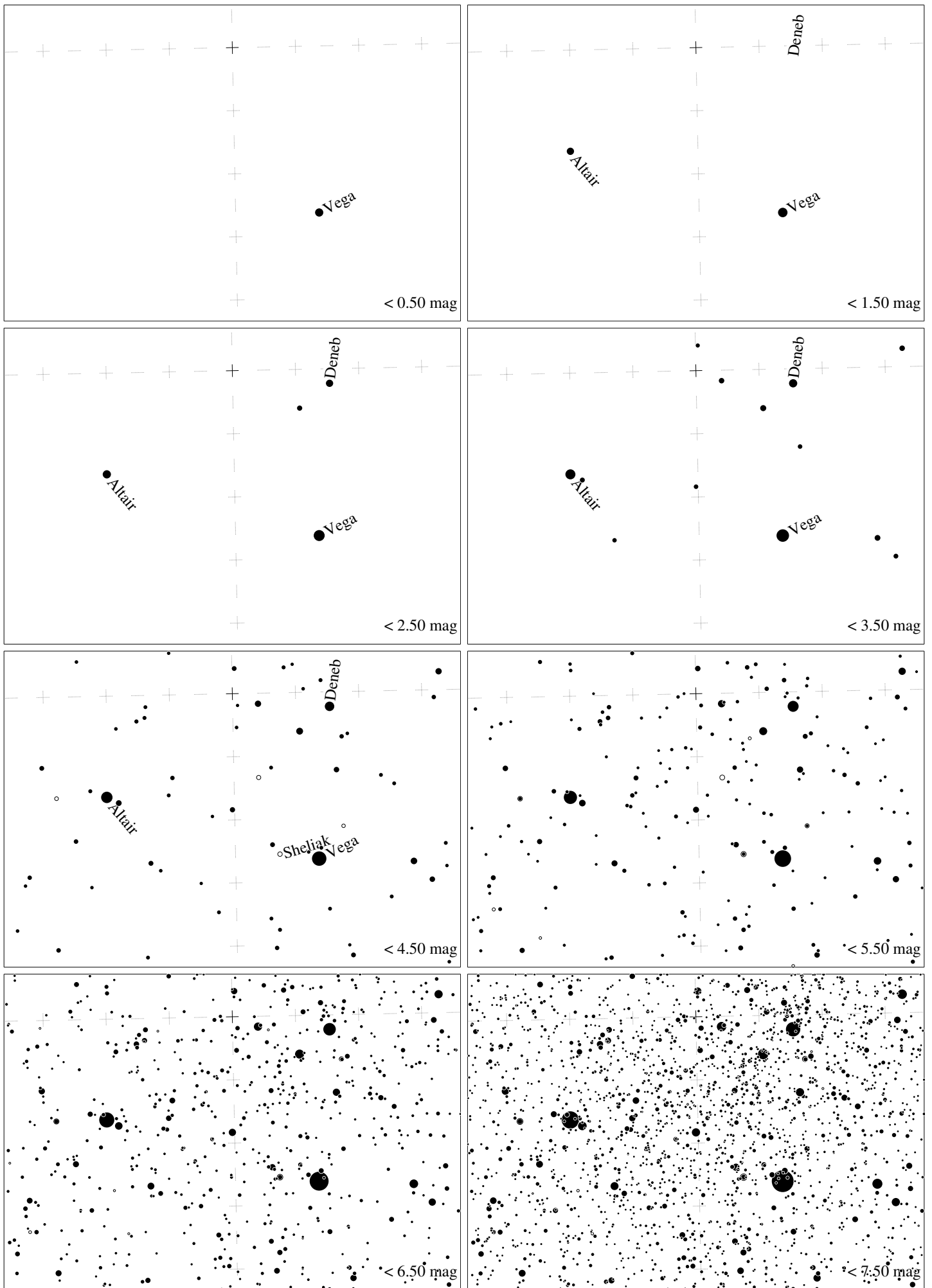
Maps for Globe at Night at latitude  $60^\circ$ , 2014-09-19, 21 h local time (Sun at  $-20^\circ$ ), transparent air. Lines from N(E,S,W) to zenith shown (crosses each  $10^\circ$ ). Centered at Albireo ( $\beta$  Cygni),  $33^\circ$  to the right from S, at  $55^\circ$  height, near the centre of Summer Triangle. Map vertical size is  $50^\circ$ . *J. Hollan, CzechGlobe*



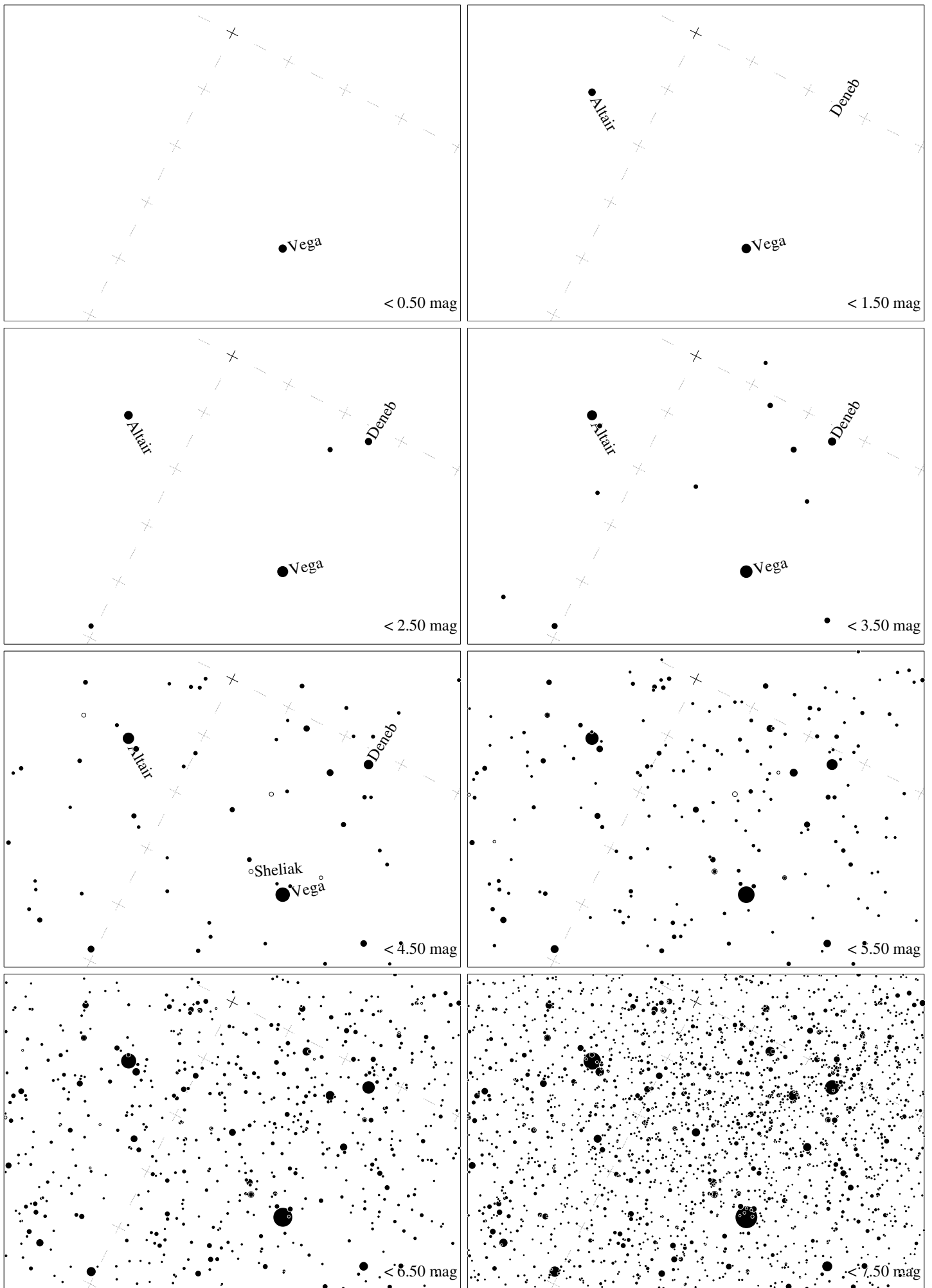
Maps for Globe at Night at latitude  $50^\circ$ , 2014-09-19, 21 h local time (Sun at  $-27^\circ$ ), transparent air. Lines from N(E,S,W) to zenith shown (crosses each  $10^\circ$ ). Centered at Albireo ( $\beta$  Cygni),  $44^\circ$  to the right from S, at  $63^\circ$  height, near the centre of Summer Triangle. Map vertical size is  $50^\circ$ . *J. Hollan, CzechGlobe*



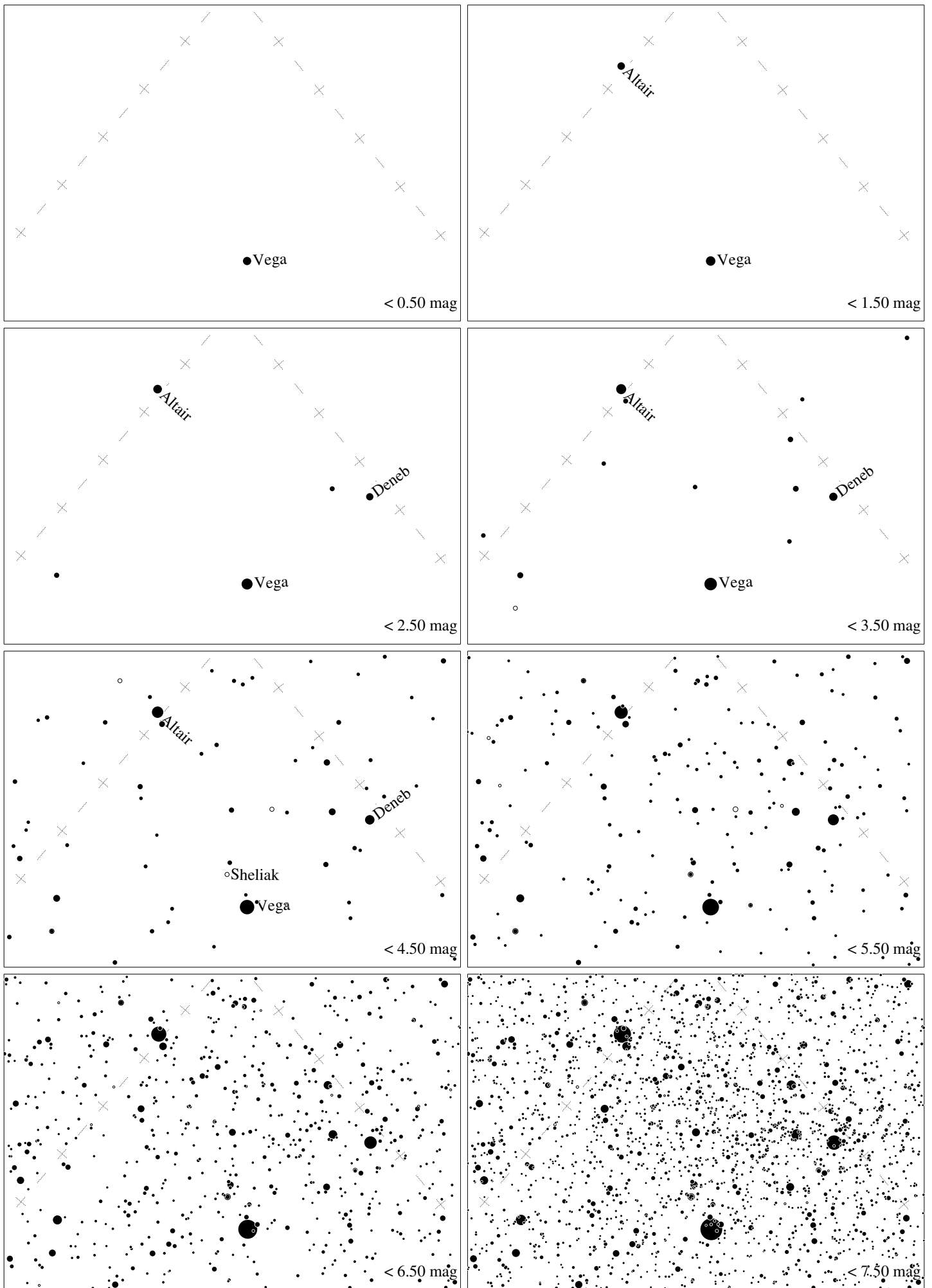
Maps for Globe at Night at latitude  $40^\circ$ , 2014-09-19, 21 h local time (Sun at  $-33^\circ$ ), transparent air. Lines from N(E,S,W) to zenith shown (crosses each  $10^\circ$ ). Centered at Albireo ( $\beta$  Cygni),  $61^\circ$  to the right from S, at  $69^\circ$  height, near the centre of Summer Triangle. Map vertical size is  $50^\circ$ . *J. Hollan, CzechGlobe*



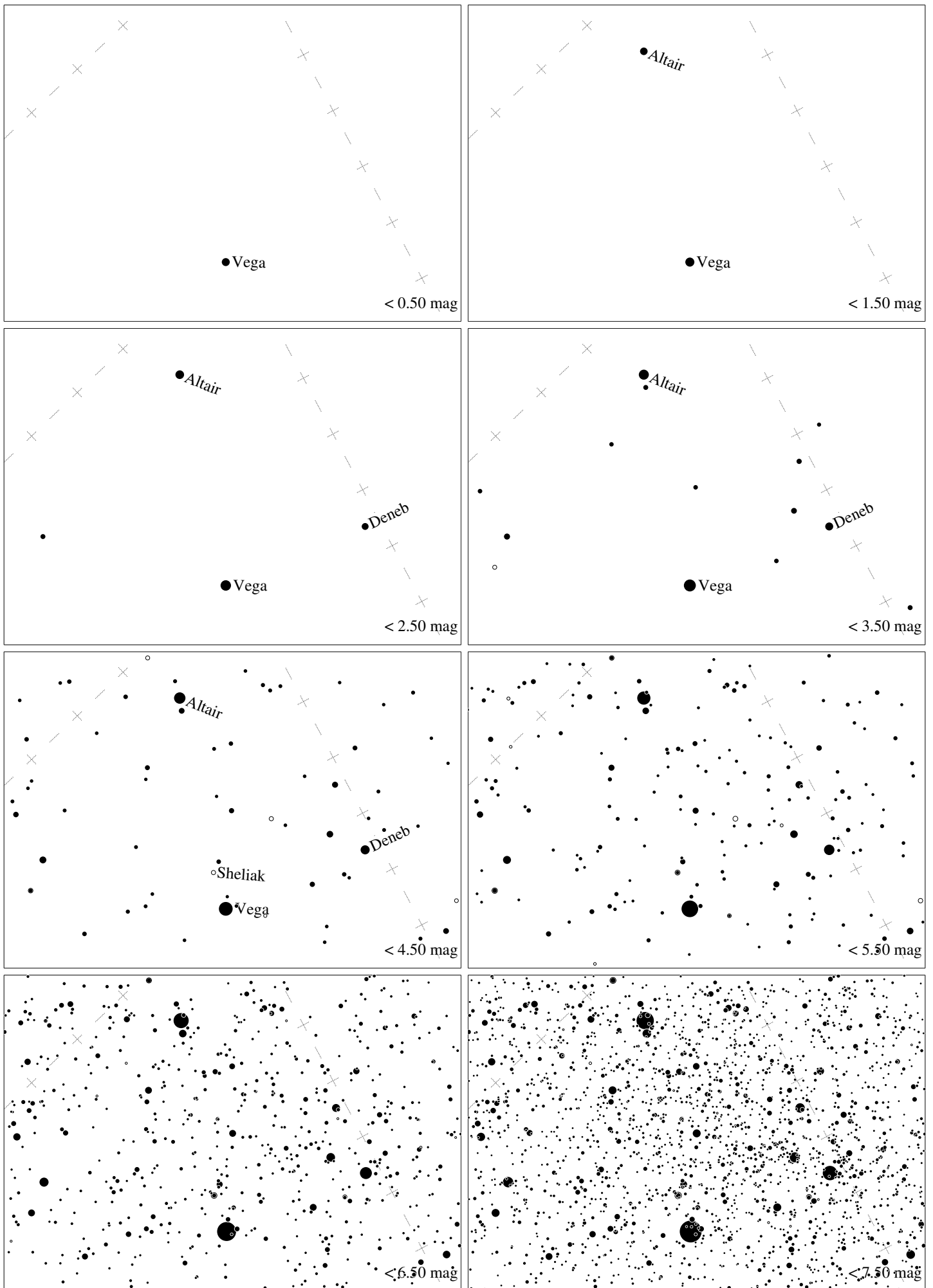
Maps for Globe at Night at latitude  $30^\circ$ , 2014-09-19, 21 h local time (Sun at  $-38^\circ$ ), transparent air. Lines from N(E,S,W) to zenith shown (crosses each  $10^\circ$ ). Centered at Albireo ( $\beta$  Cygni),  $89^\circ$  to the right from S, at  $72^\circ$  height, near the centre of Summer Triangle. Map vertical size is  $50^\circ$ . *J. Hollan, CzechGlobe*



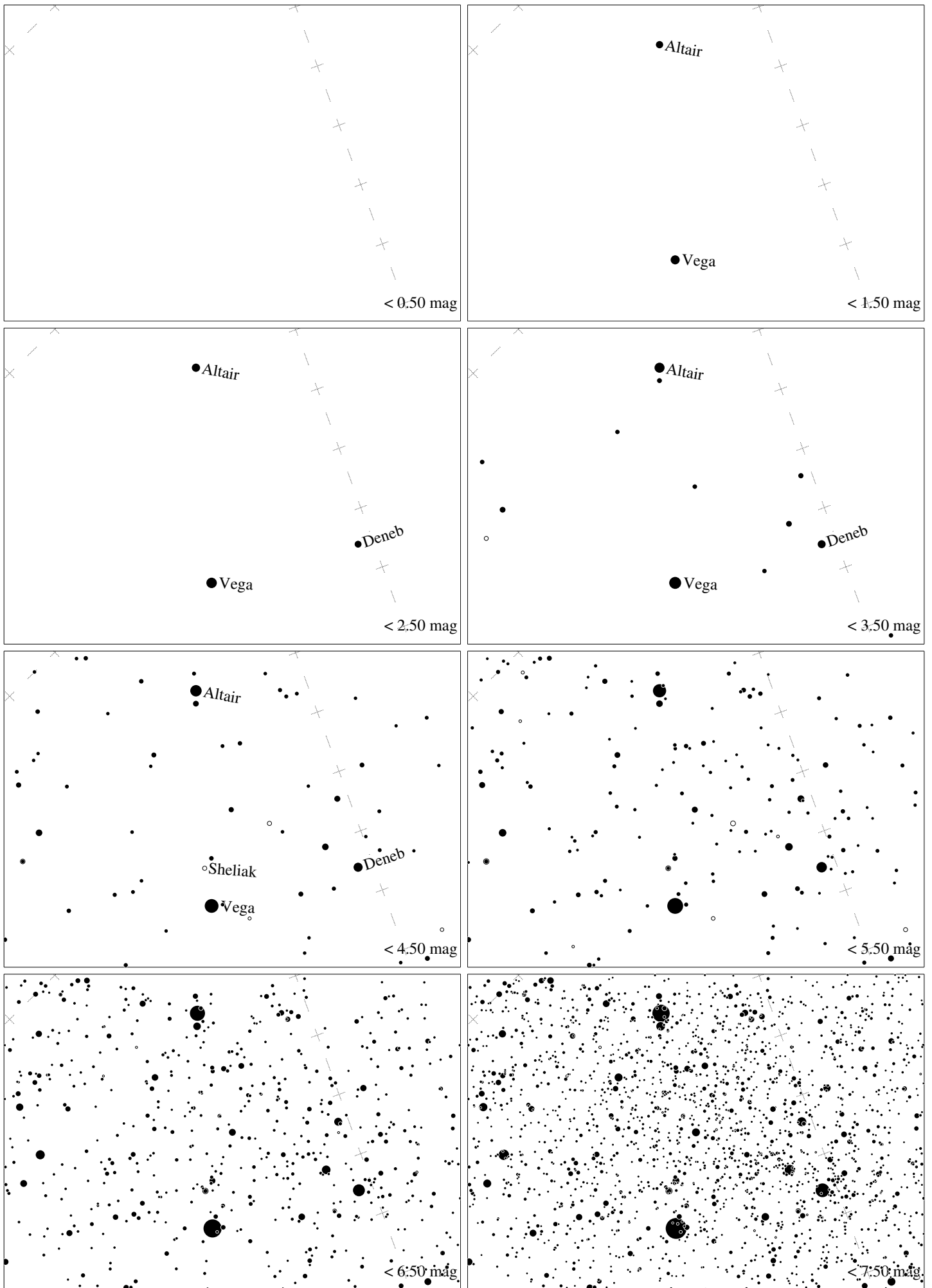
Maps for Globe at Night at latitude  $20^\circ$ , 2014-09-19, 21 h local time (Sun at  $-42^\circ$ ), transparent air. Lines from N(E,S,W) to zenith shown (crosses each  $10^\circ$ ). Centered at Albireo ( $\beta$  Cygni),  $63^\circ$  to the left from N, at  $69^\circ$  height, near the centre of Summer Triangle. Map vertical size is  $50^\circ$ . *J. Hollan, CzechGlobe*



Maps for Globe at Night at latitude  $10^\circ$ , 2014-09-19, 21 h local time (Sun at  $-45^\circ$ ), transparent air. Lines from N(E,S,W) to zenith shown (crosses each  $10^\circ$ ). Centered at Albireo ( $\beta$  Cygni),  $45^\circ$  to the left from N, at  $63^\circ$  height, near the centre of Summer Triangle. Map vertical size is  $50^\circ$ . *J. Hollan, CzechGlobe*

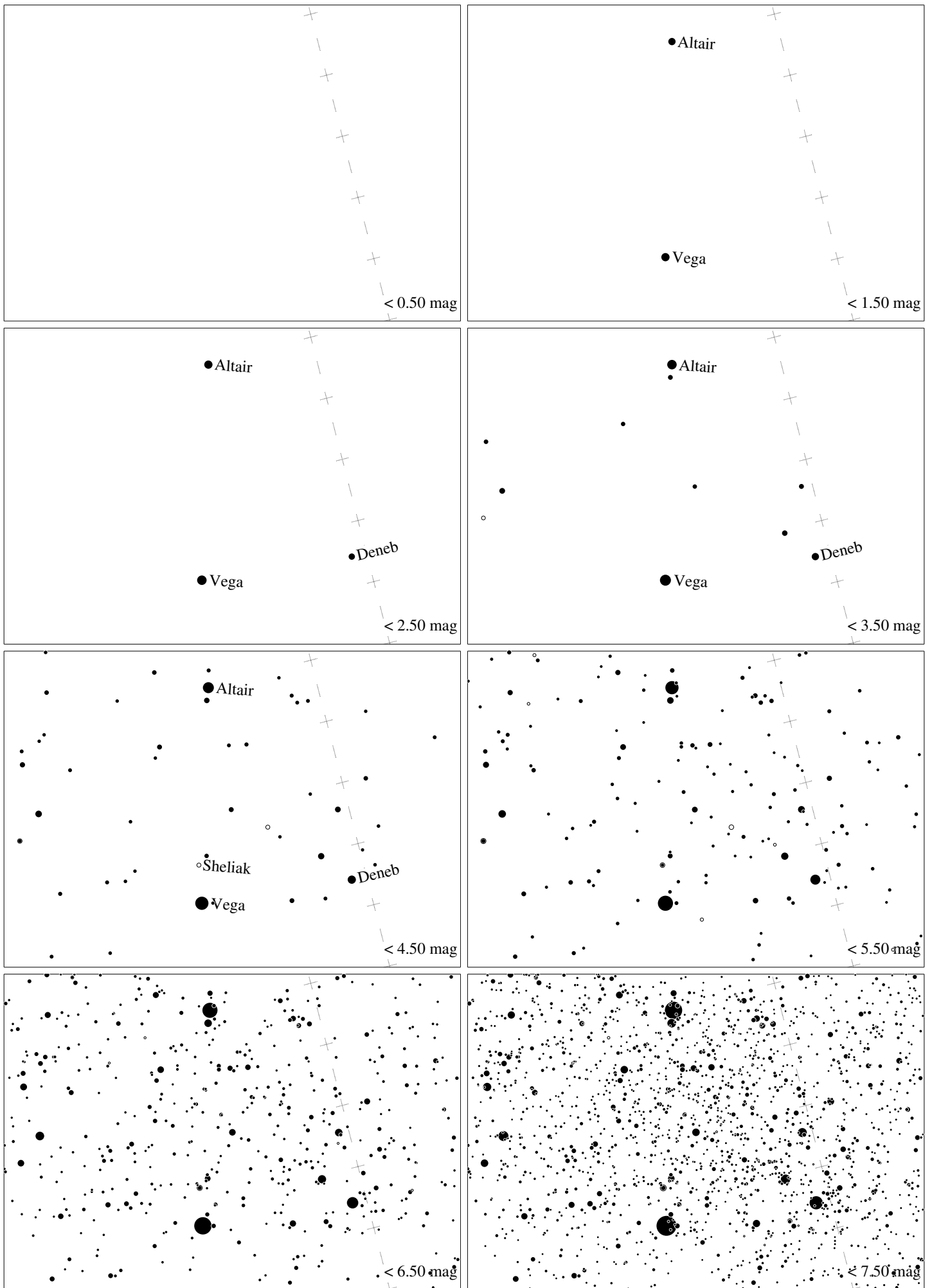


Maps for Globe at Night at latitude  $0^\circ$ , 2014-09-19, 21 h local time (Sun at  $-47^\circ$ ), transparent air. Lines from N(E,S,W) to zenith shown (crosses each  $10^\circ$ ). Centered at Albireo ( $\beta$  Cygni),  $34^\circ$  to the left from N, at  $56^\circ$  height, near the centre of Summer Triangle. Map vertical size is  $50^\circ$ . *J. Hollan, CzechGlobe*



Maps for Globe at Night at latitude  $-10^\circ$ , 2014-09-19, 21 h local time (Sun at  $-46^\circ$ ), transparent air. Lines from N(E,S,W) to zenith shown (crosses each  $10^\circ$ ). Centered at Albireo ( $\beta$  Cygni),  $27^\circ$  to the left from N, at  $47^\circ$  height, near the centre of Summer Triangle. Map vertical size is  $50^\circ$ . *J. Hollan, CzechGlobe*





Maps for Globe at Night at latitude  $-20^\circ$ , 2014-09-19, 21 h local time (Sun at  $-44^\circ$ ), transparent air. Lines from N(E,S,W) to zenith shown (crosses each  $10^\circ$ ). Centered at Albireo ( $\beta$  Cygni),  $24^\circ$  to the left from N, at  $38^\circ$  height, near the centre of Summer Triangle. Map vertical size is  $50^\circ$ . *J. Hollan, CzechGlobe*