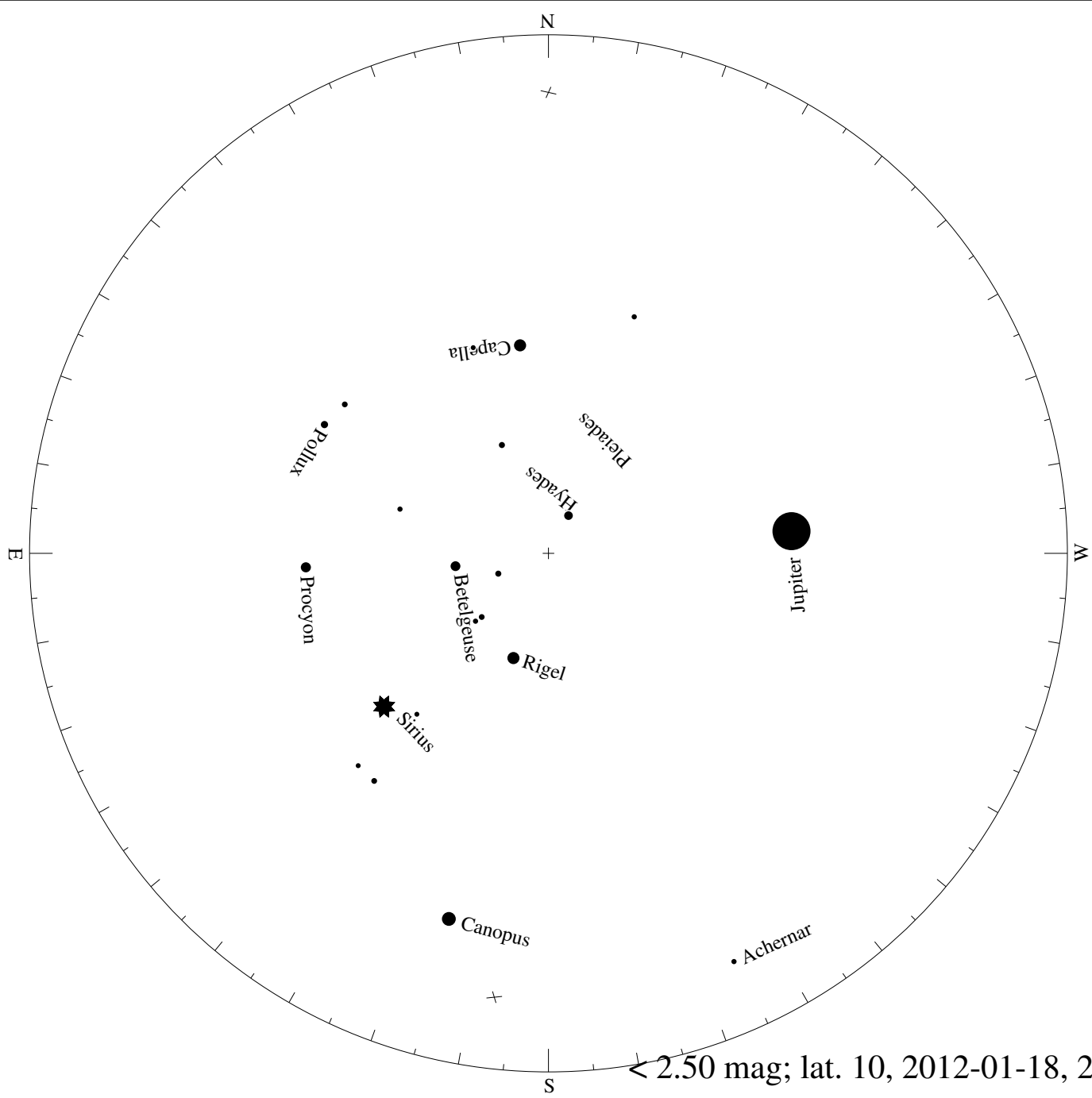
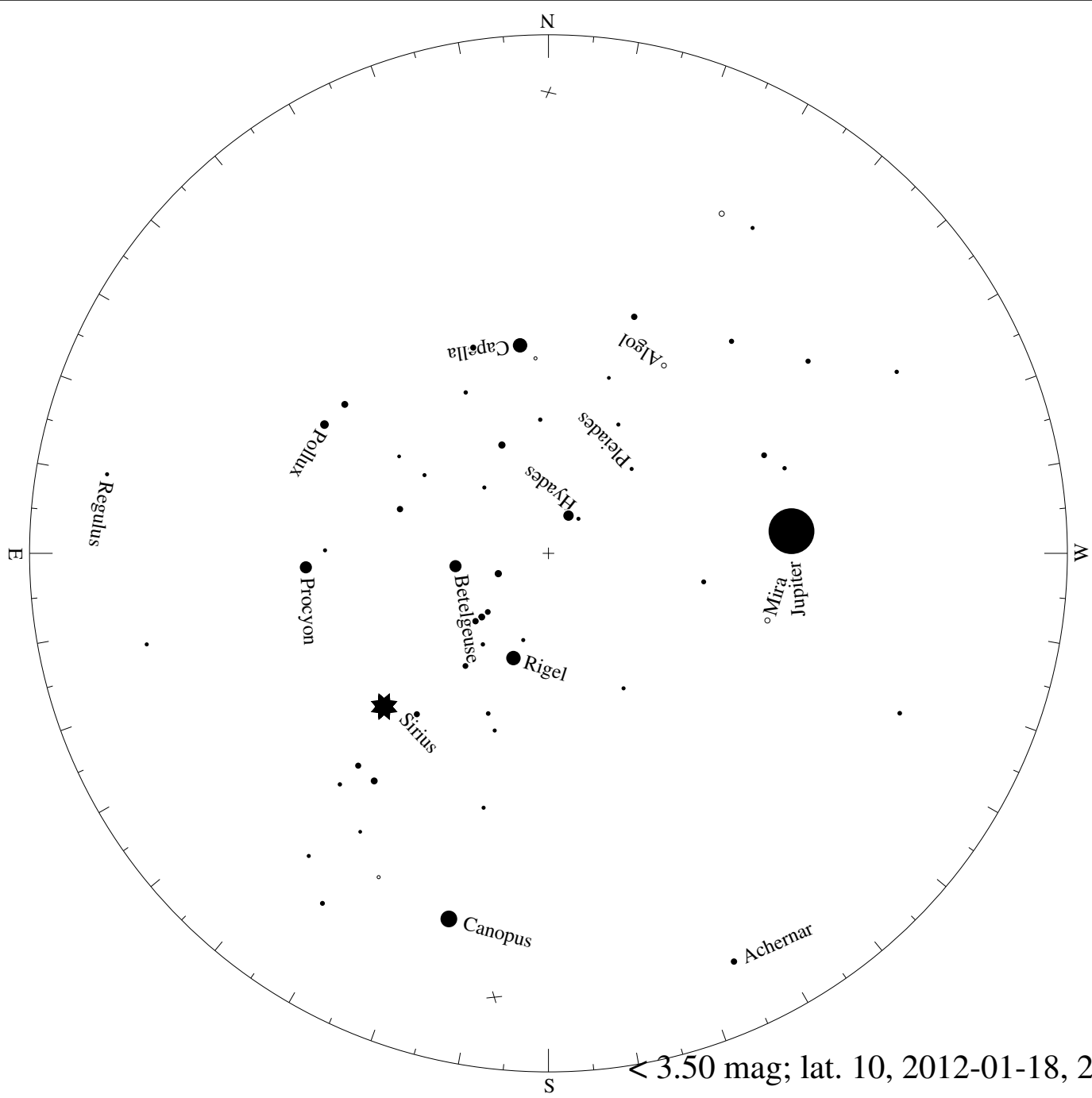
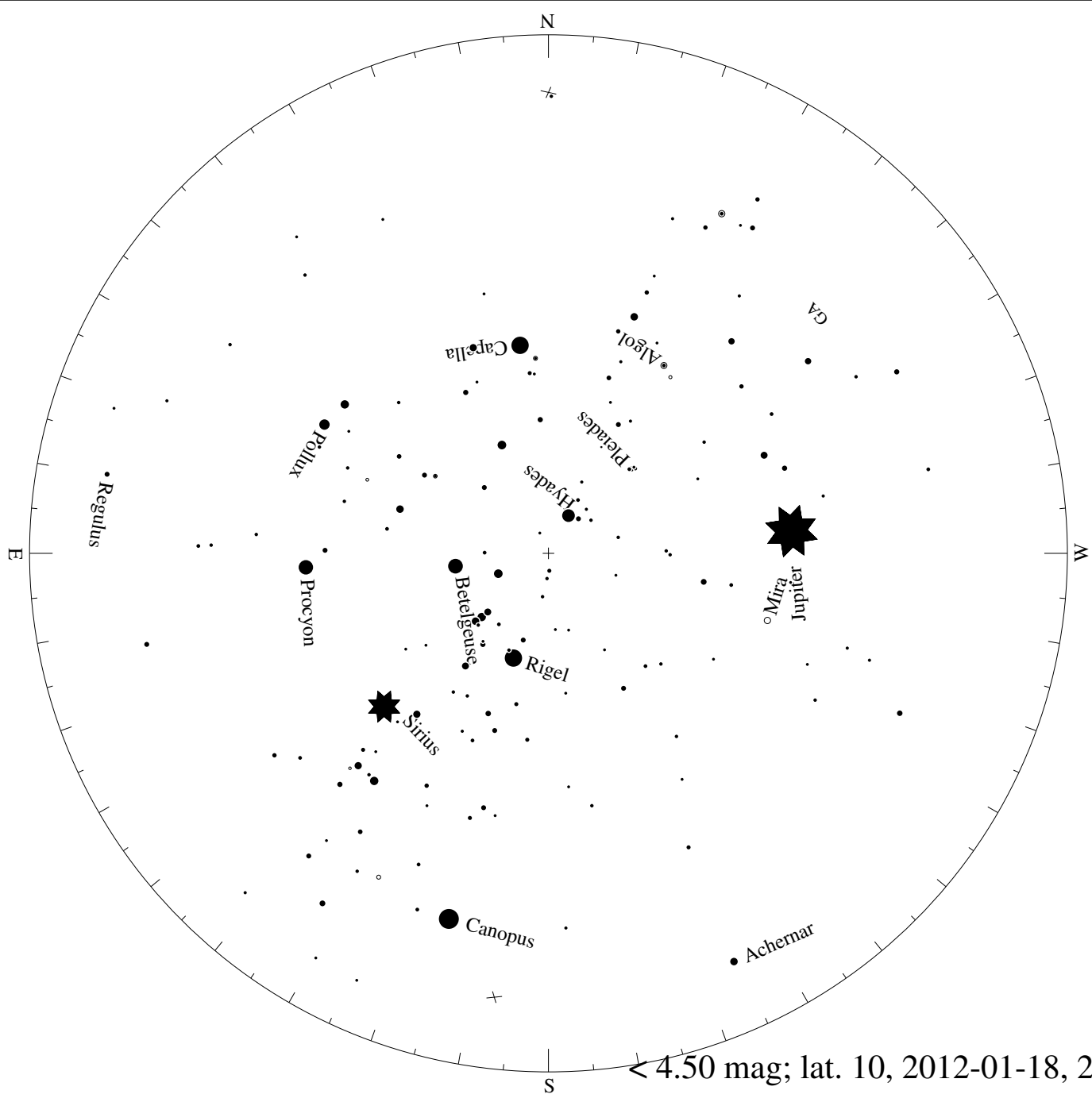


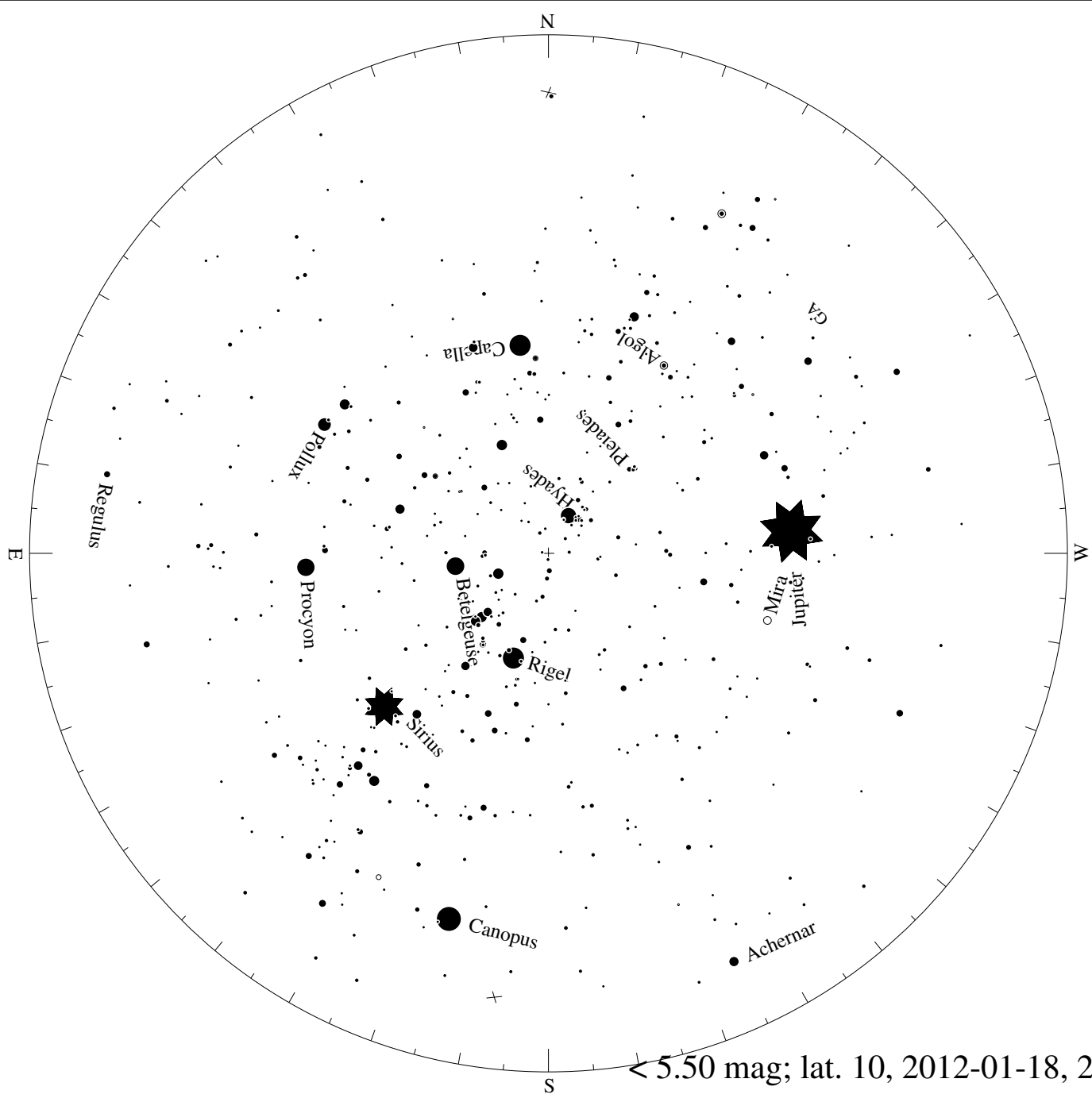
< 1.50 mag; lat. 10, 2012-01-18, 21 h local time



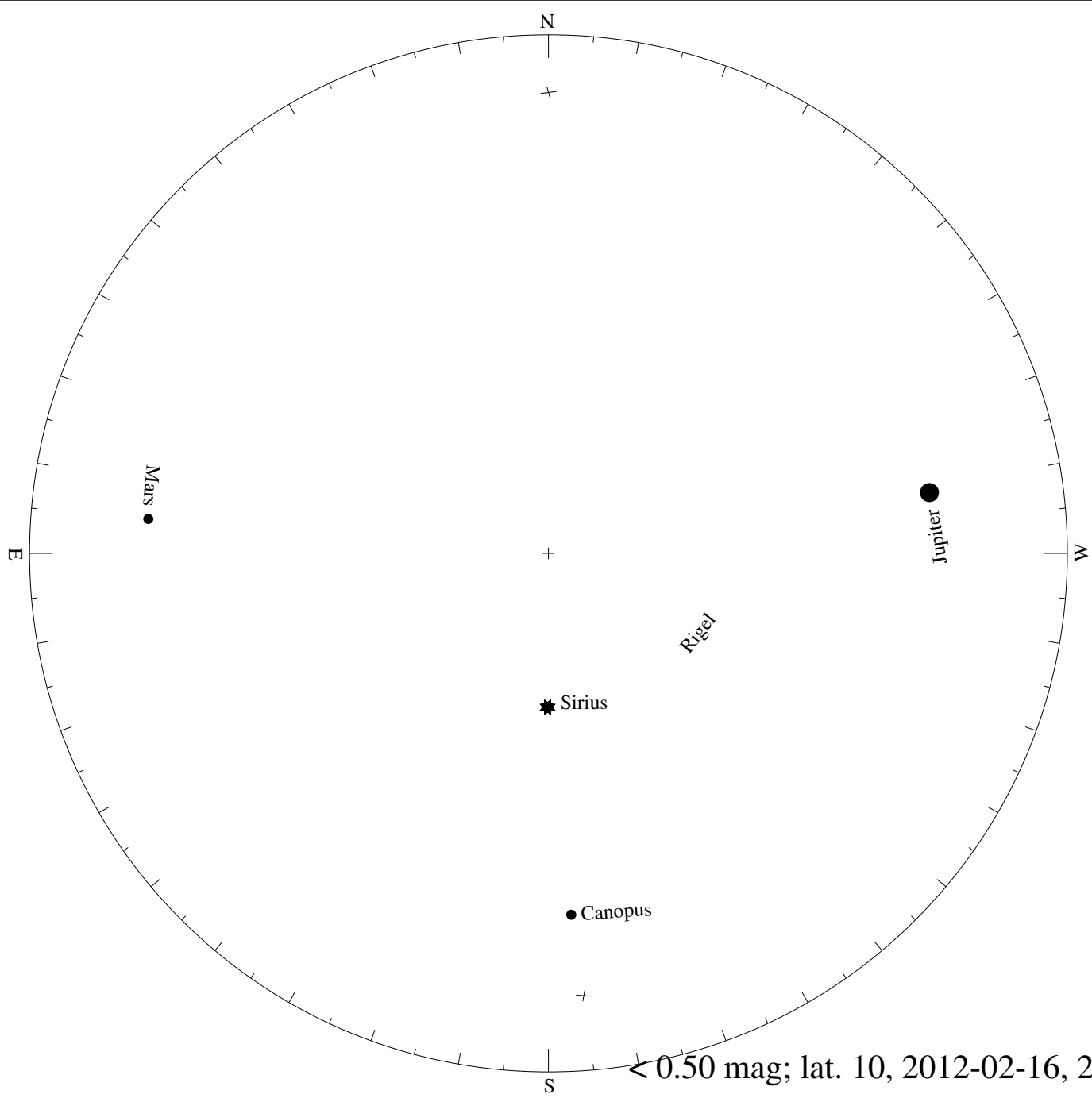


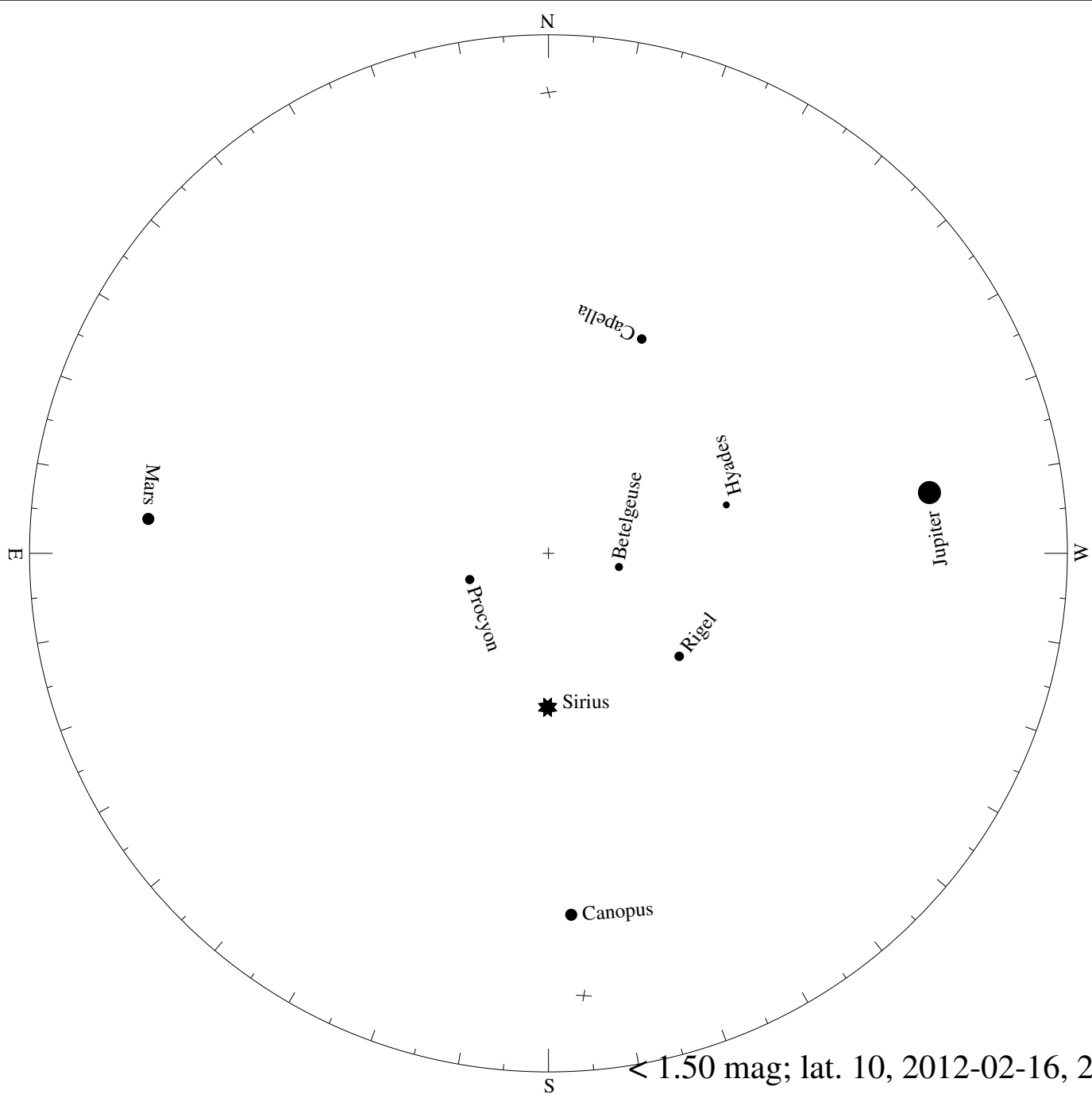
> 3.50 mag; lat. 10, 2012-01-18, 21 h local time



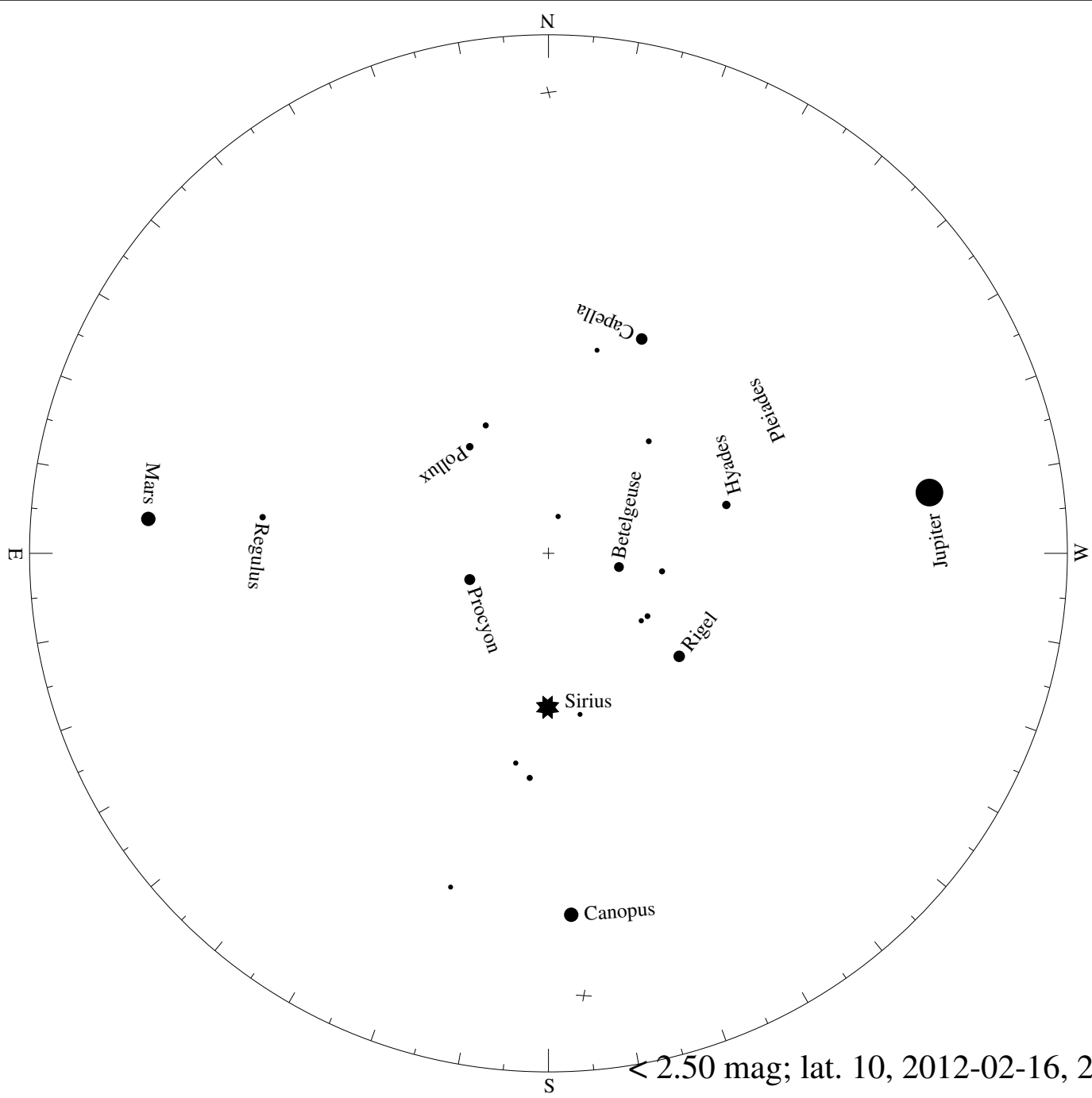


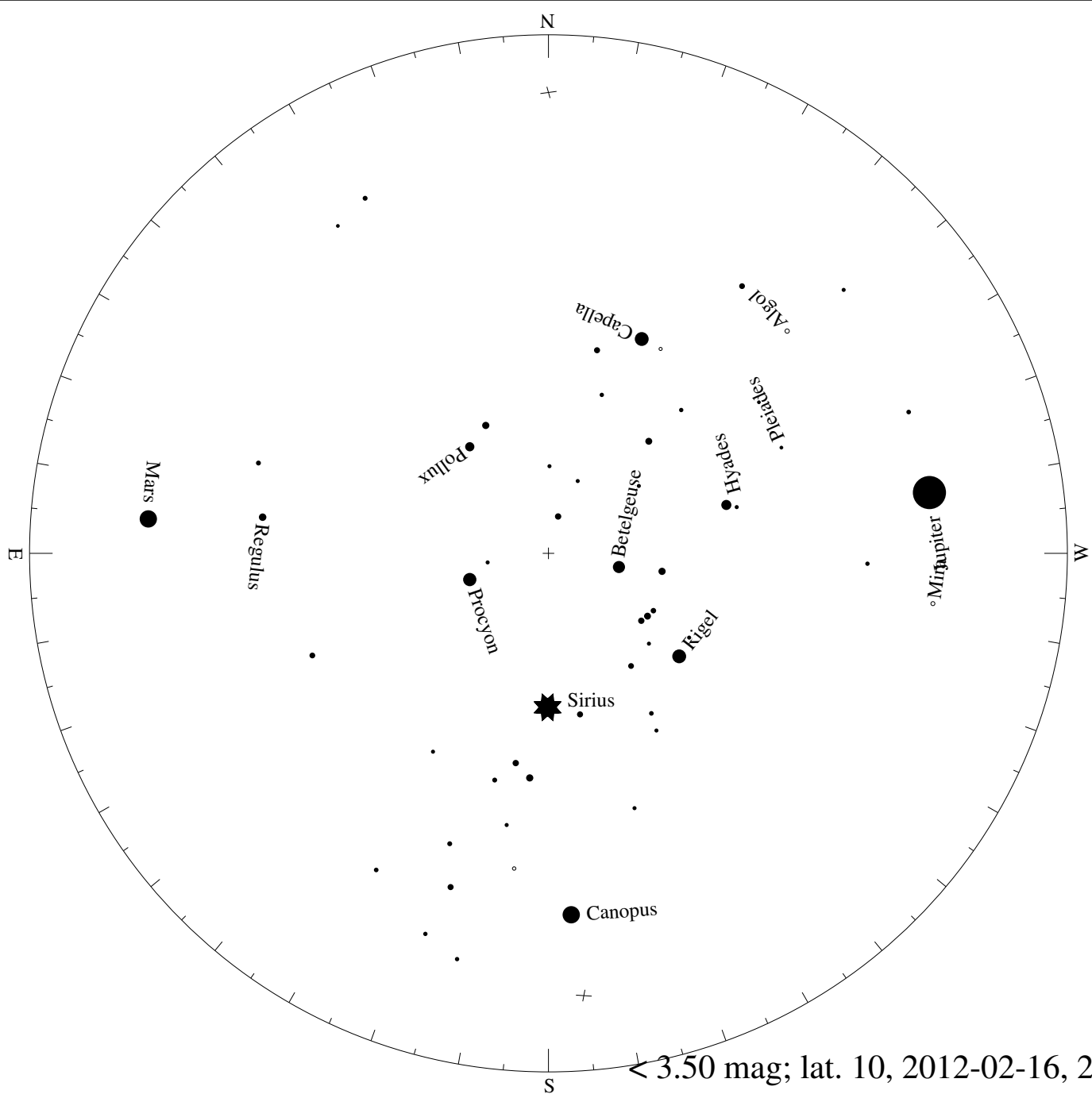
< 5.50 mag; lat. 10, 2012-01-18, 21 h local time

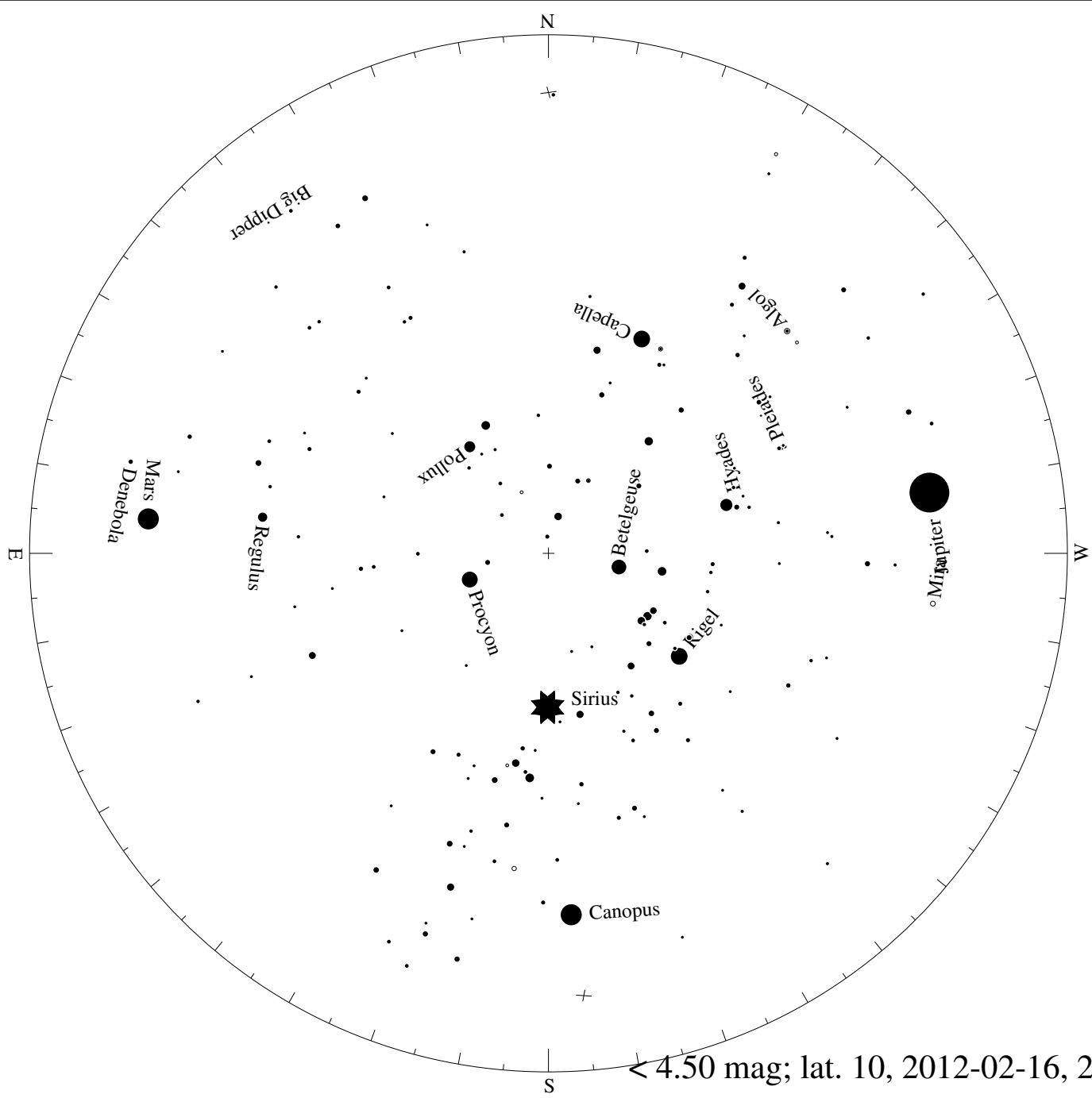


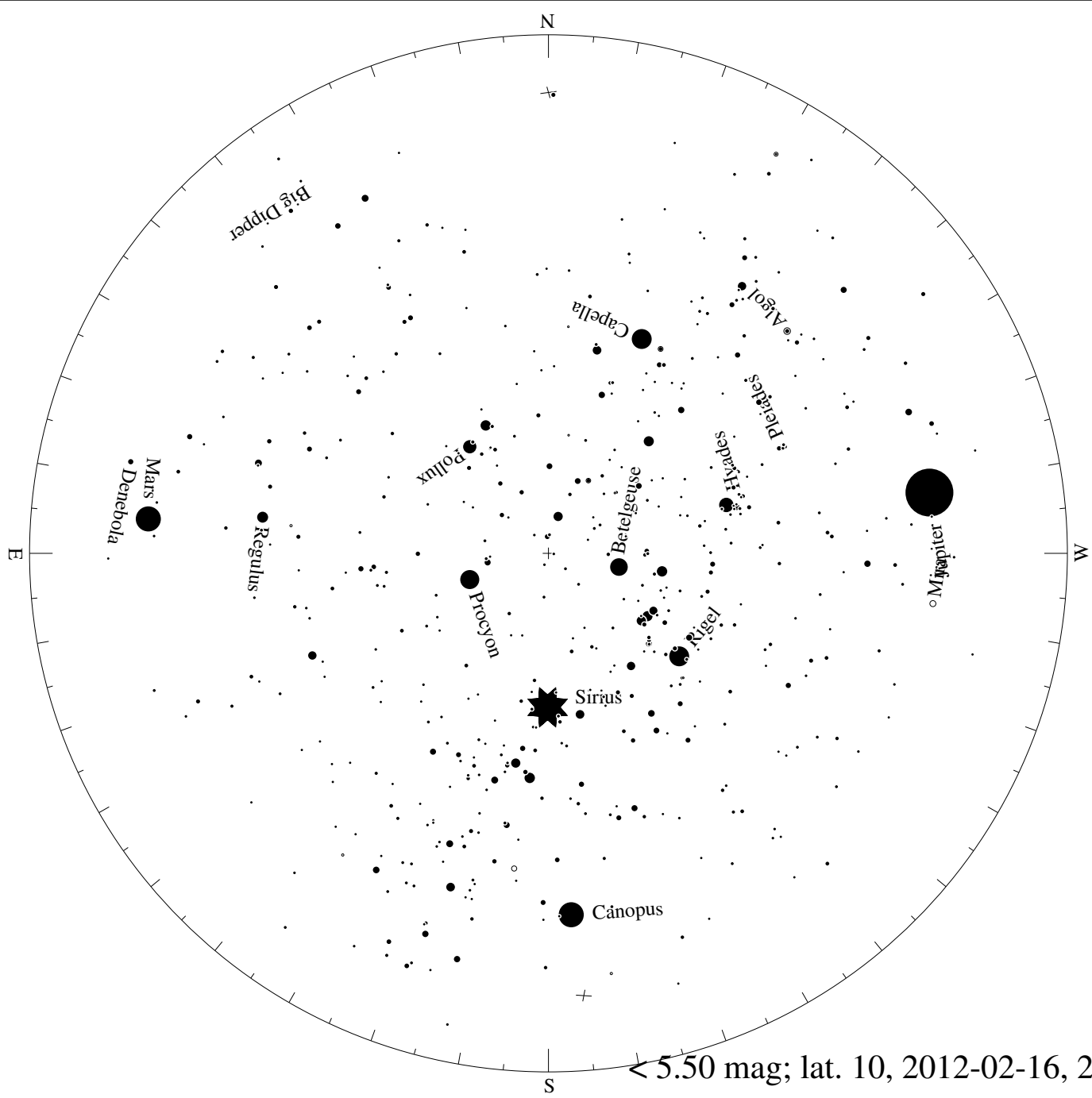


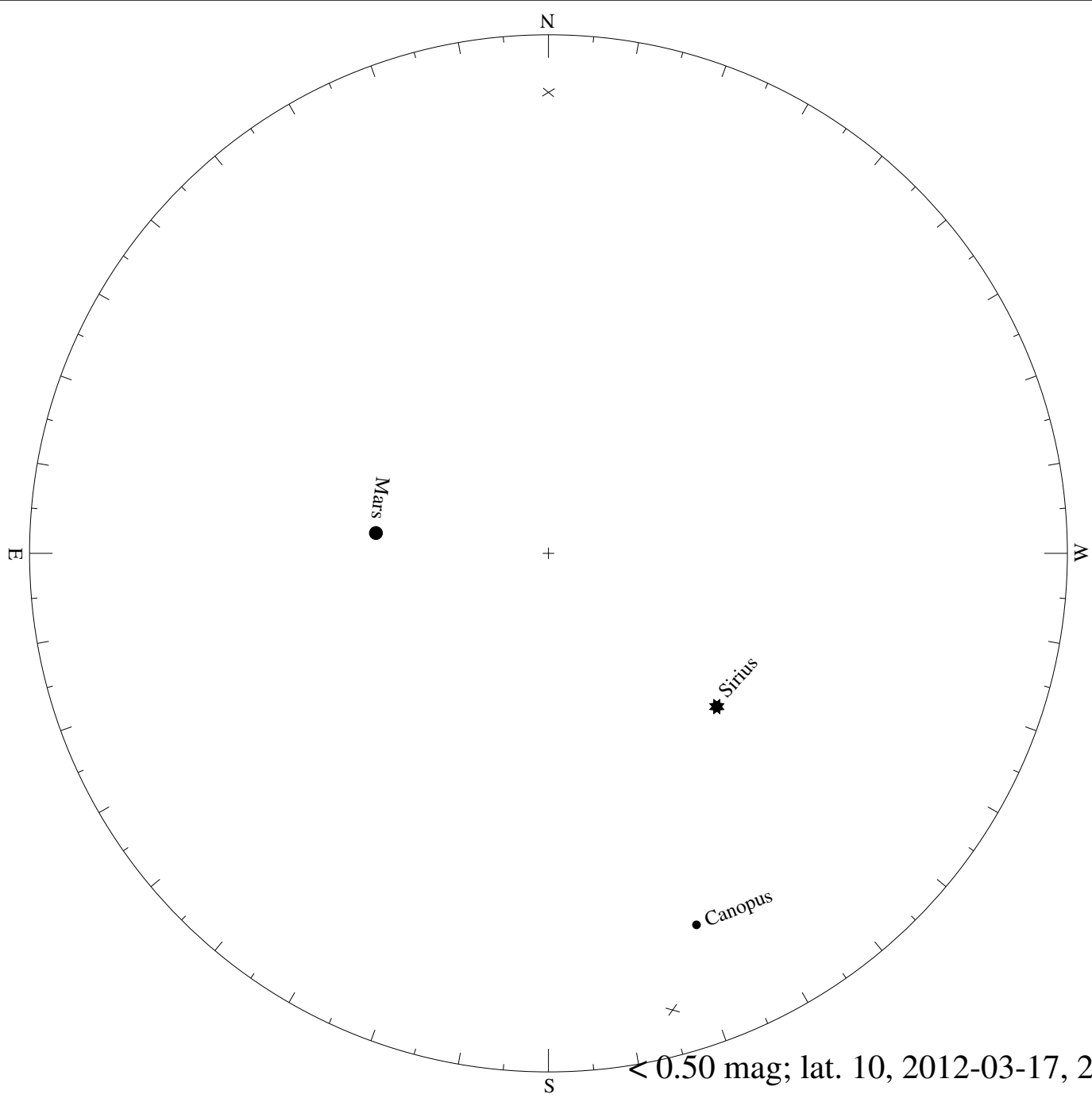
< 1.50 mag; lat. 10, 2012-02-16, 21 h local time



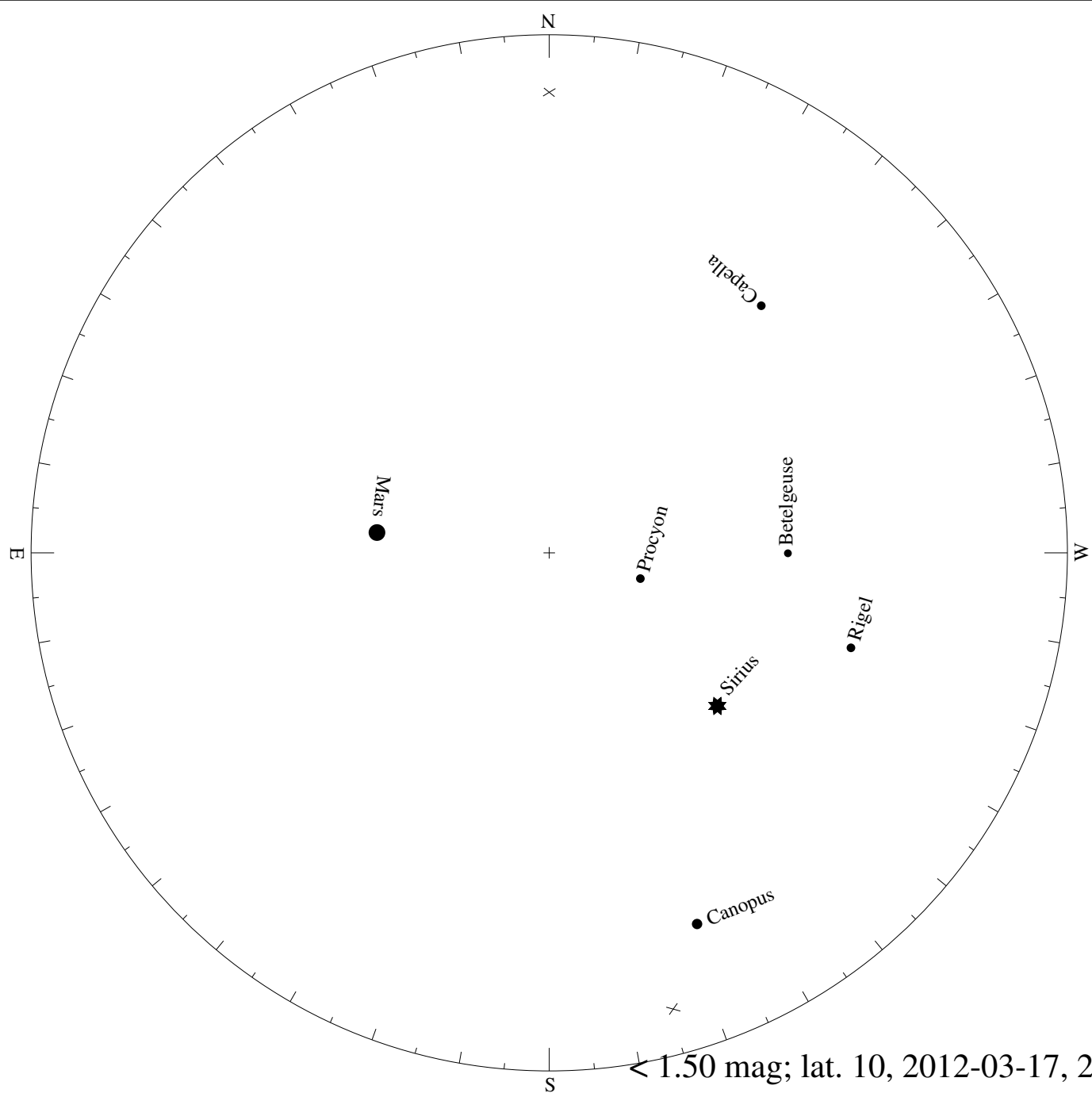


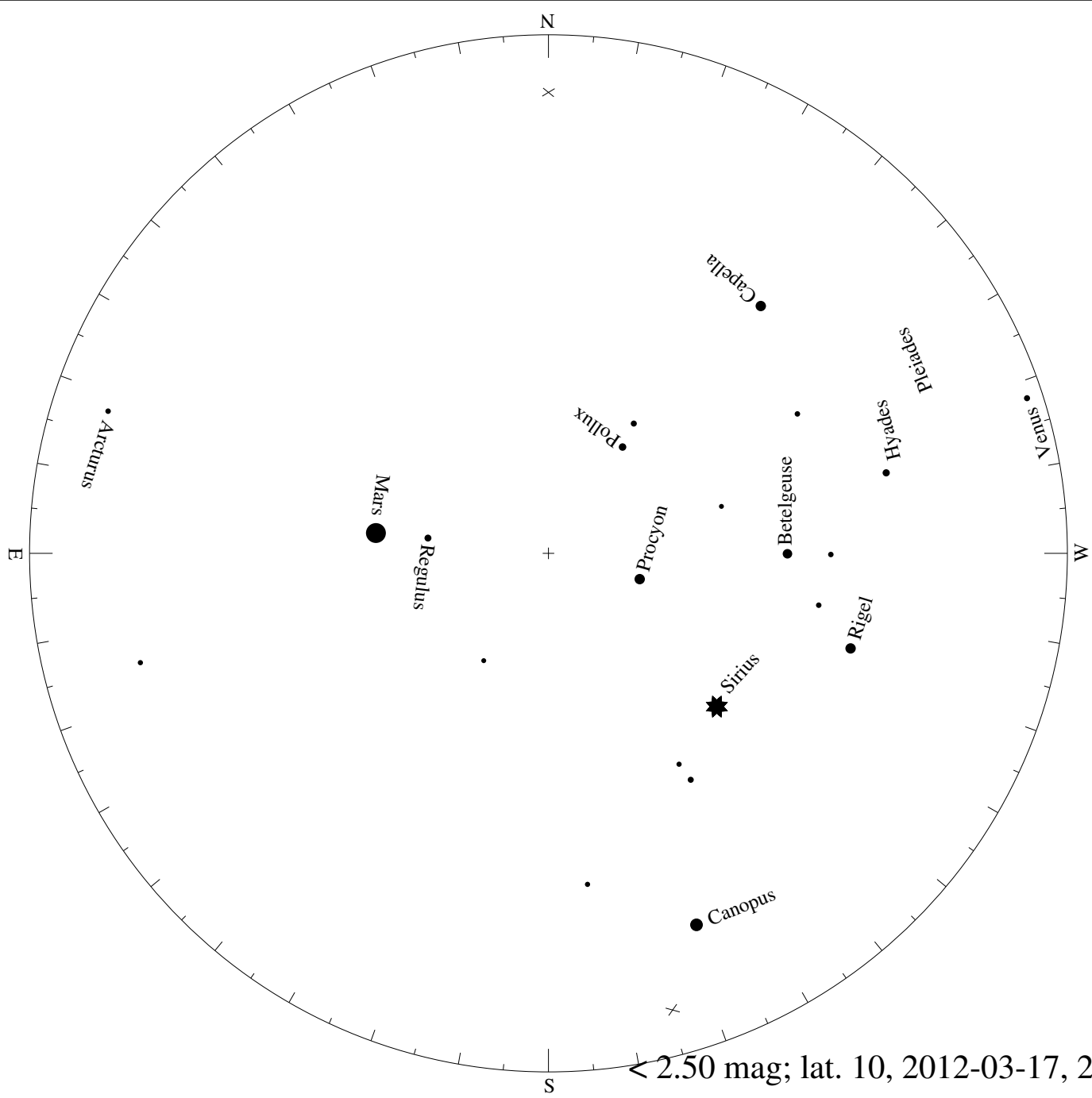




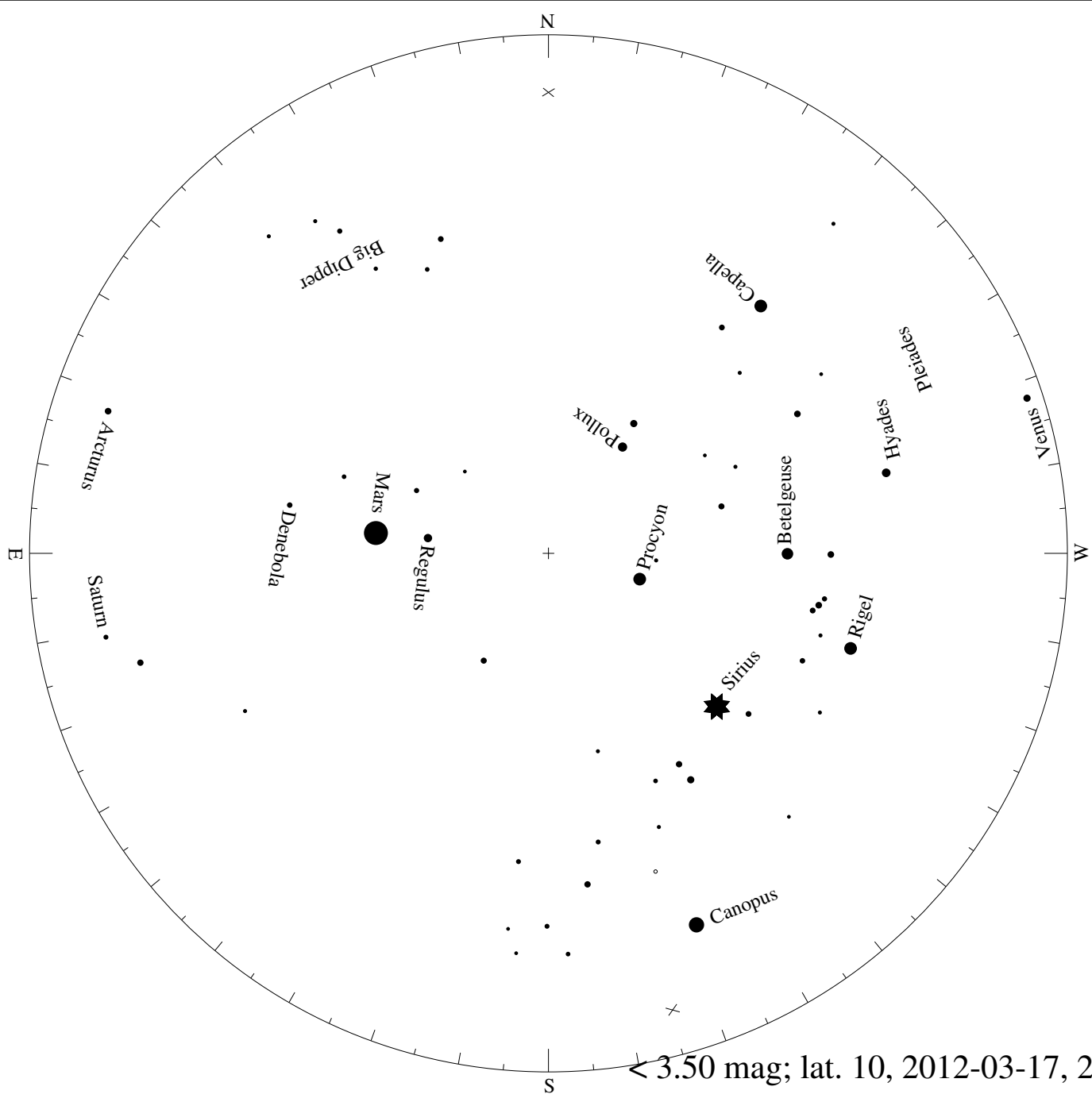


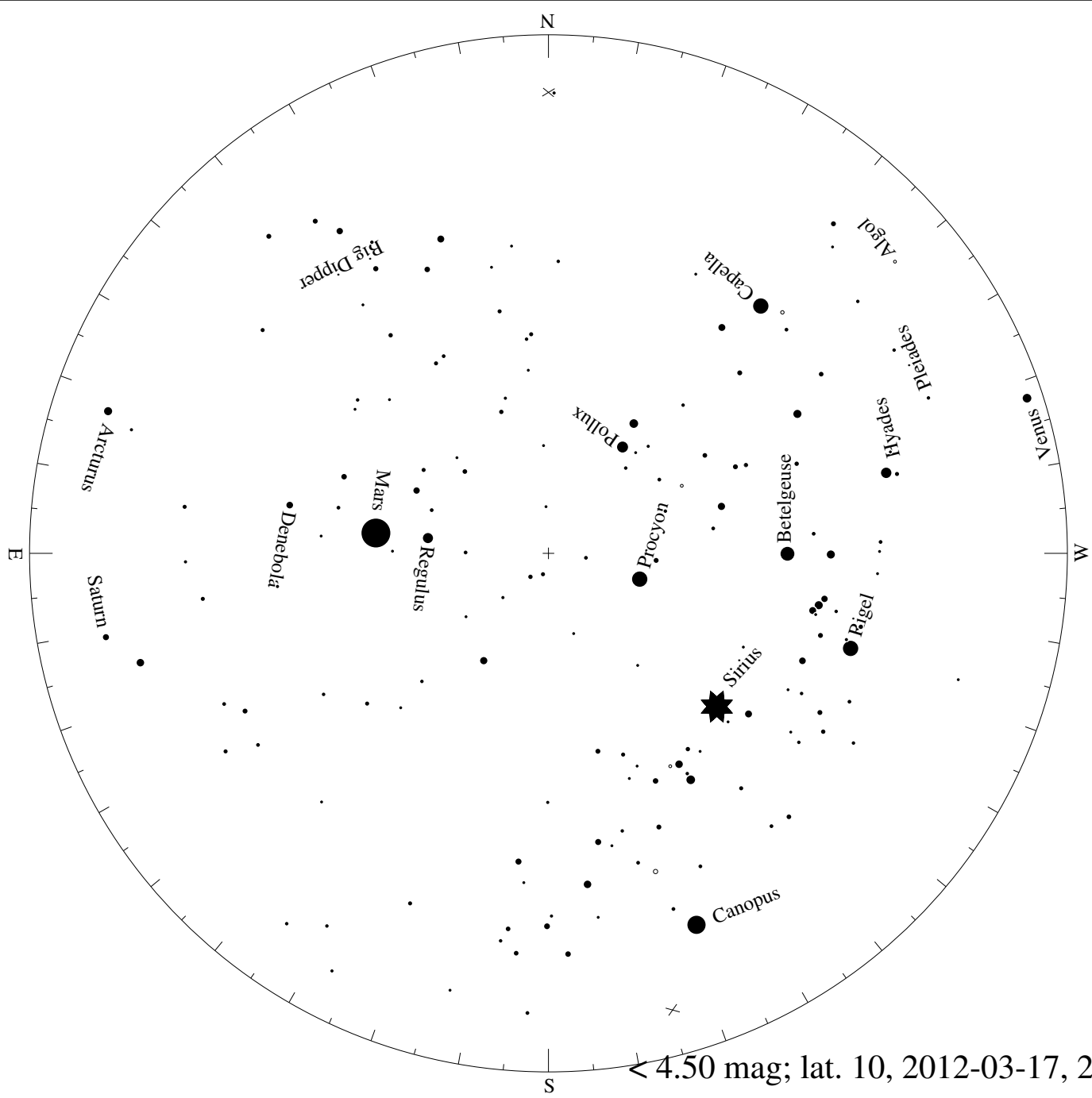
< 0.50 mag; lat. 10, 2012-03-17, 21 h local time

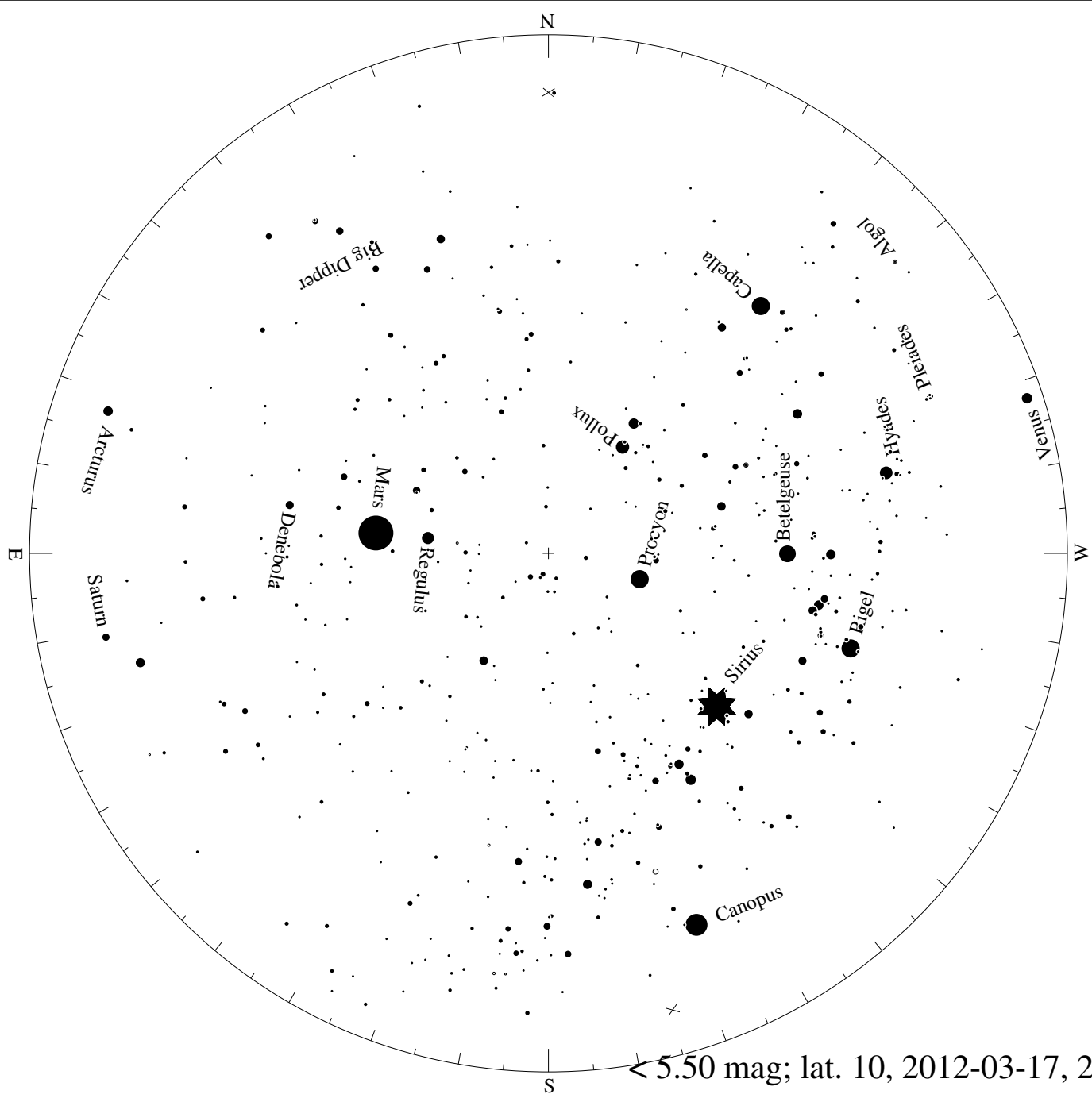




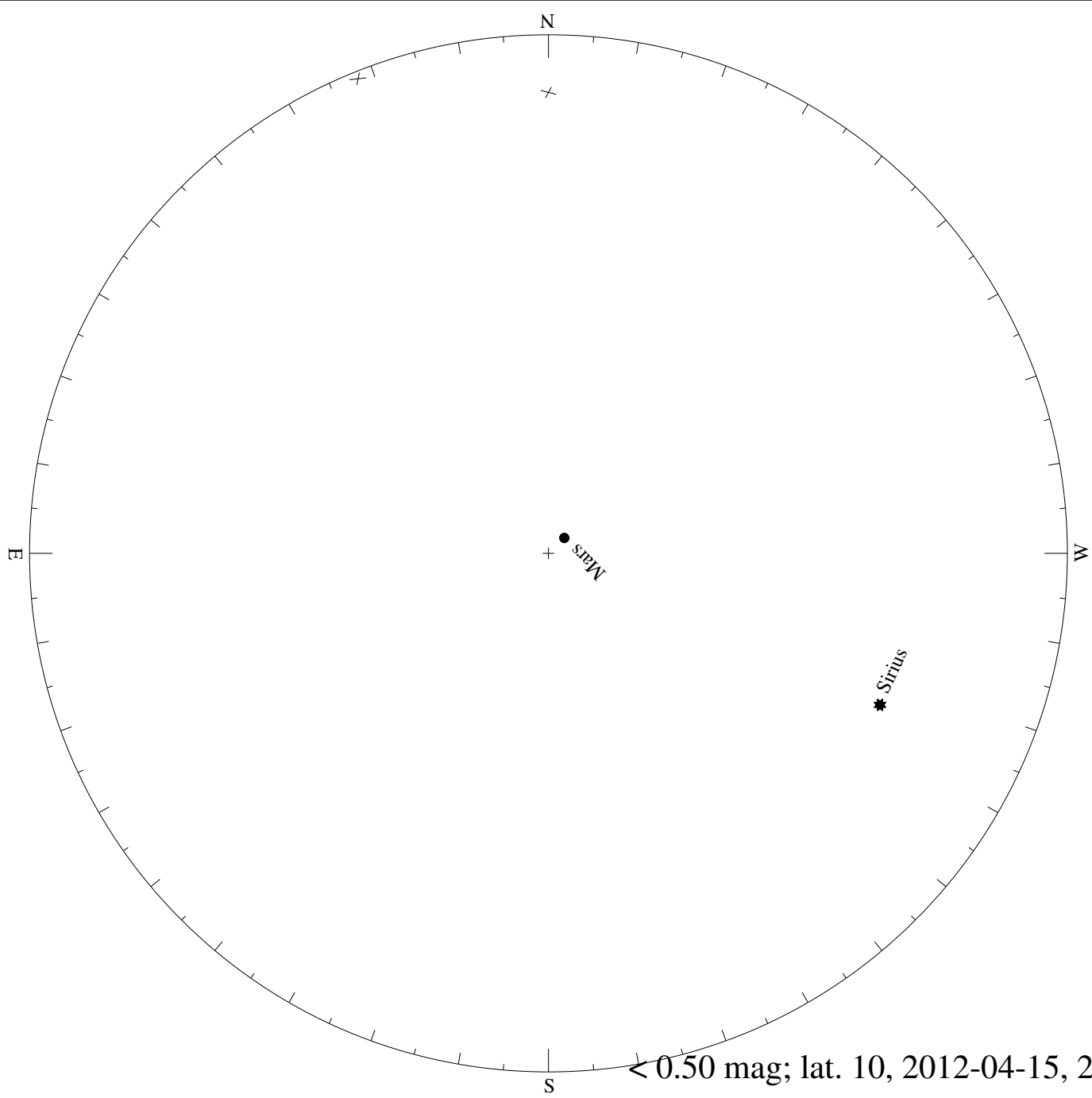
< 2.50 mag; lat. 10, 2012-03-17, 21 h local time

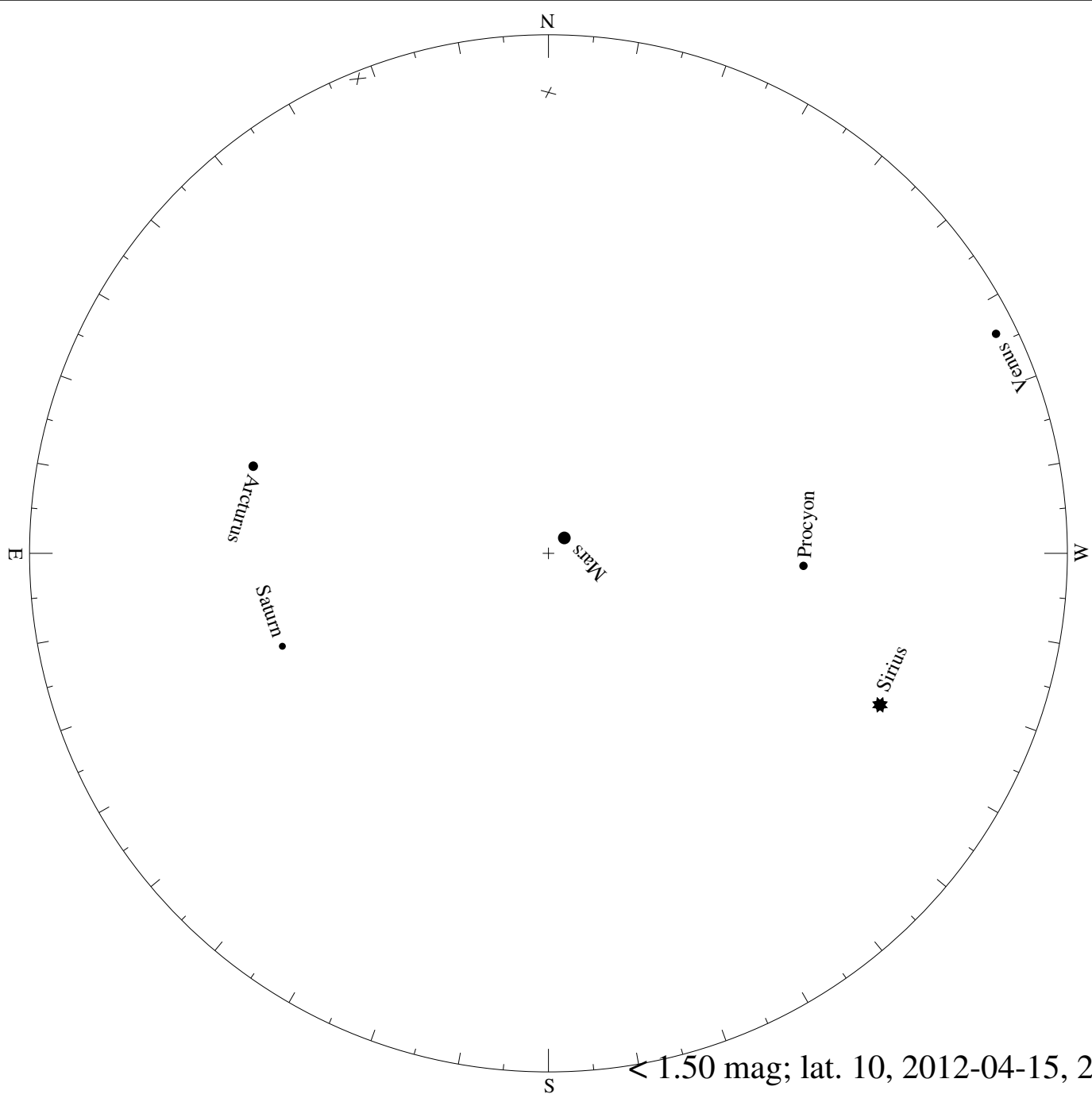


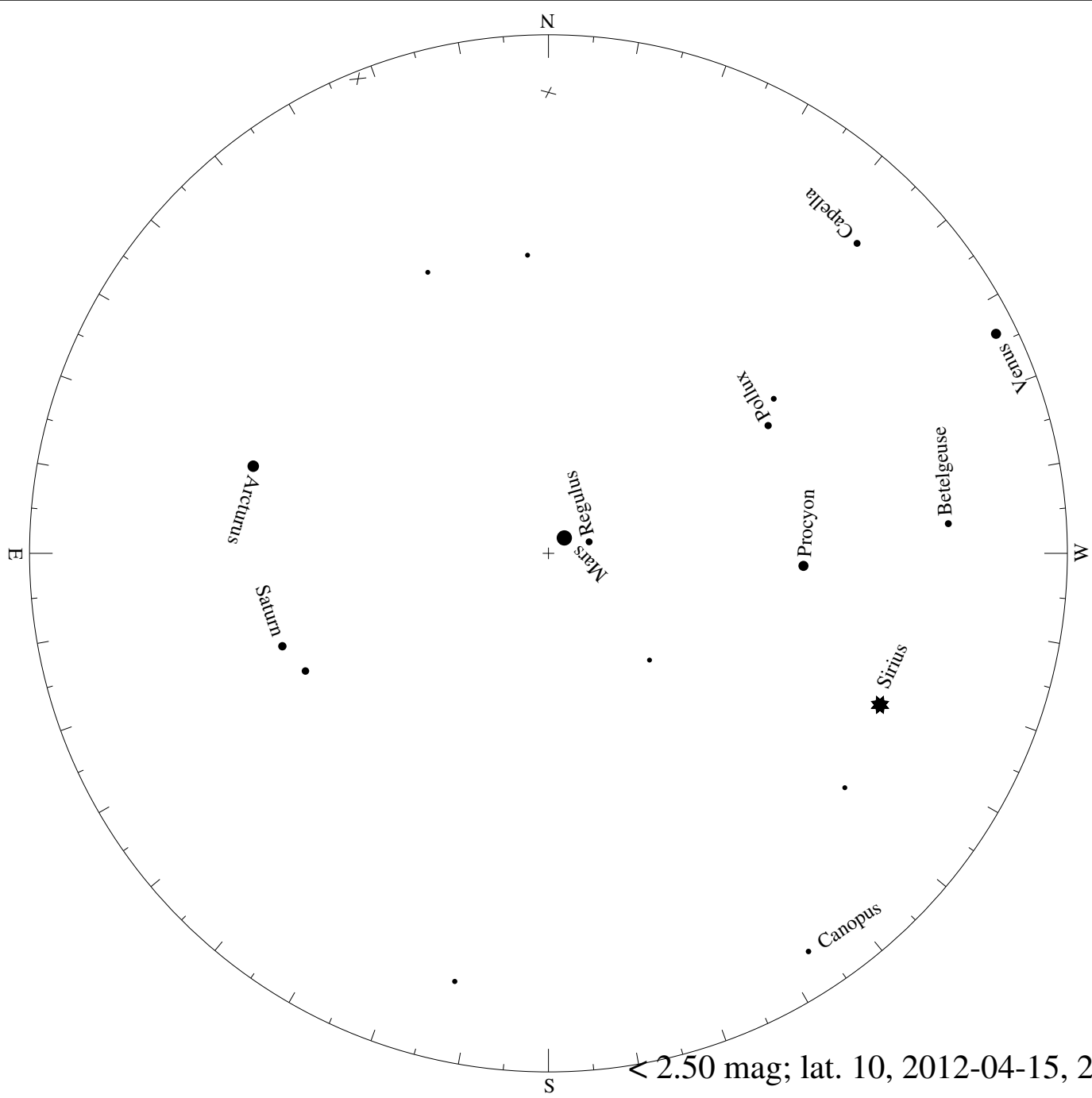


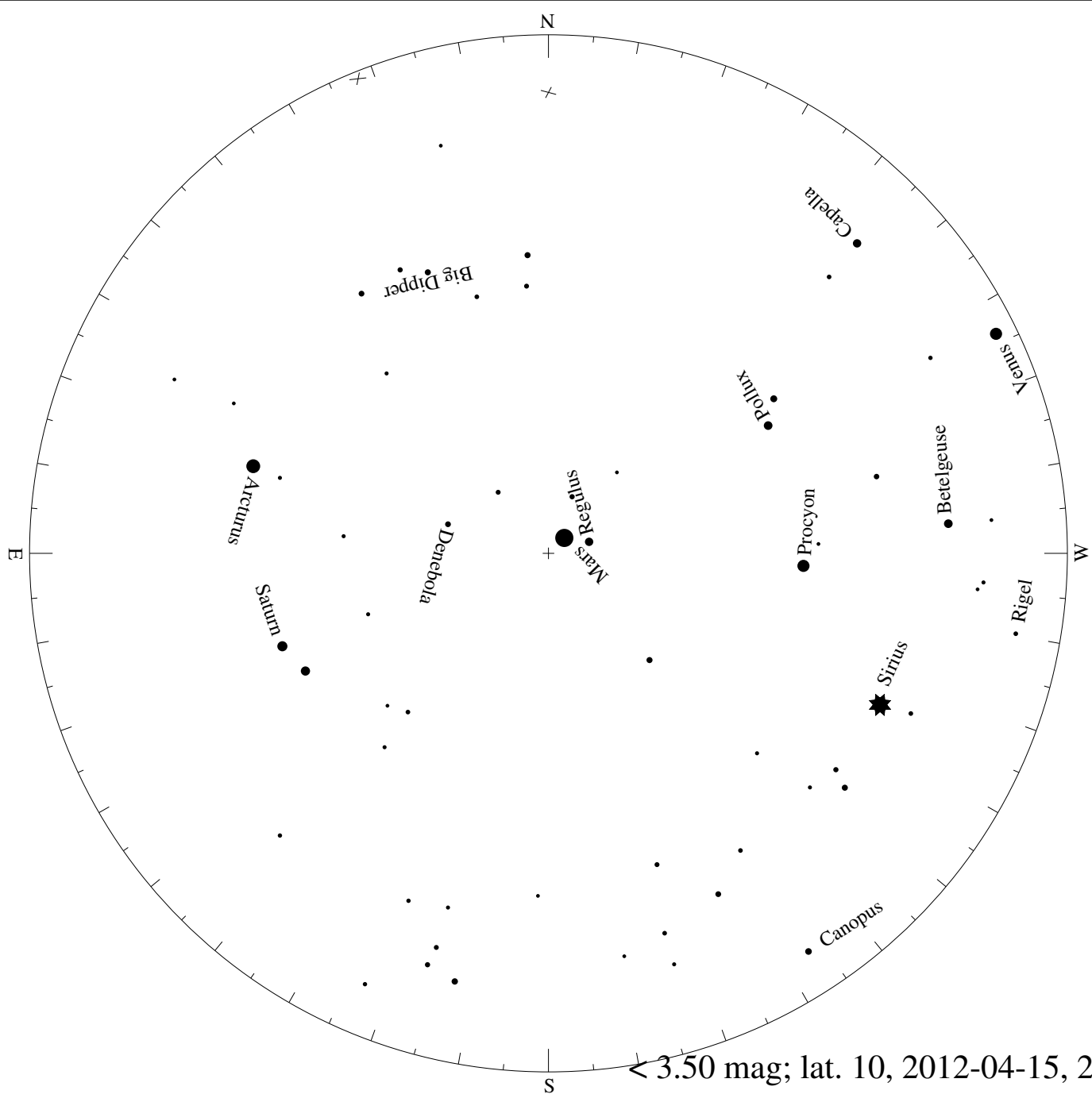


< 5.50 mag; lat. 10, 2012-03-17, 21 h local time









< 3.50 mag; lat. 10, 2012-04-15, 21 h local time

