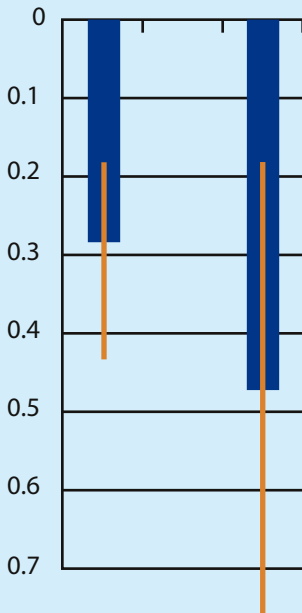


Climate change

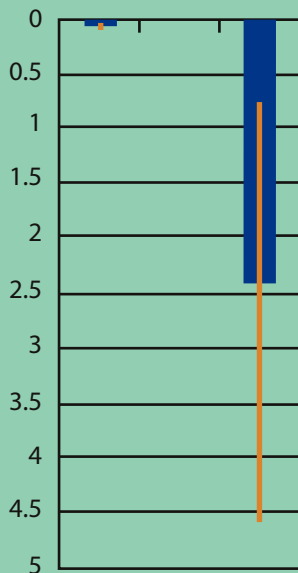
CH₄ measures CH₄ + BC measures



Global mean avoided warming in 2050 (°C)

Human health

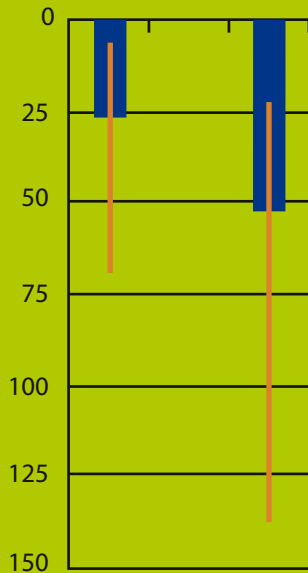
CH₄ measures CH₄ + BC measures



Annually avoided premature deaths (million)

Food security

CH₄ measures CH₄ + BC measures



Annually avoided crop yield losses (total maize, rice, soybean and wheat, million tonnes)