

comments:

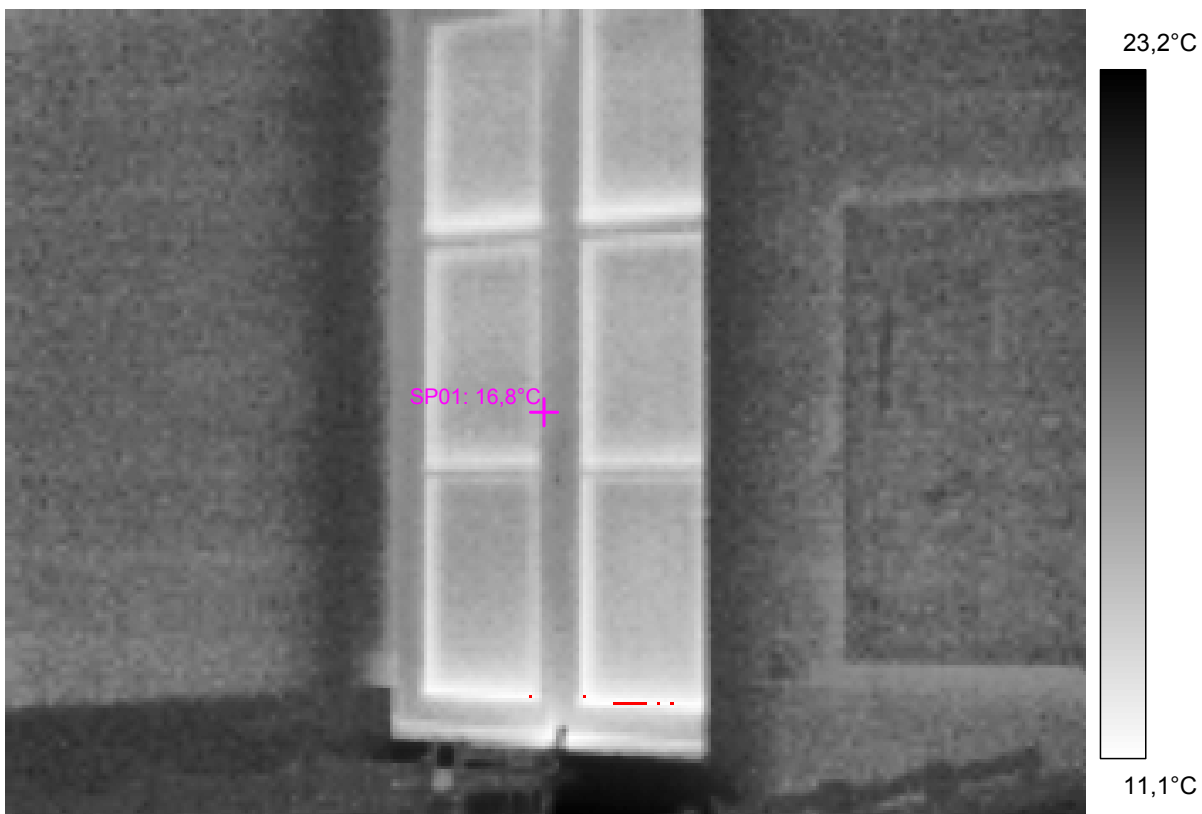
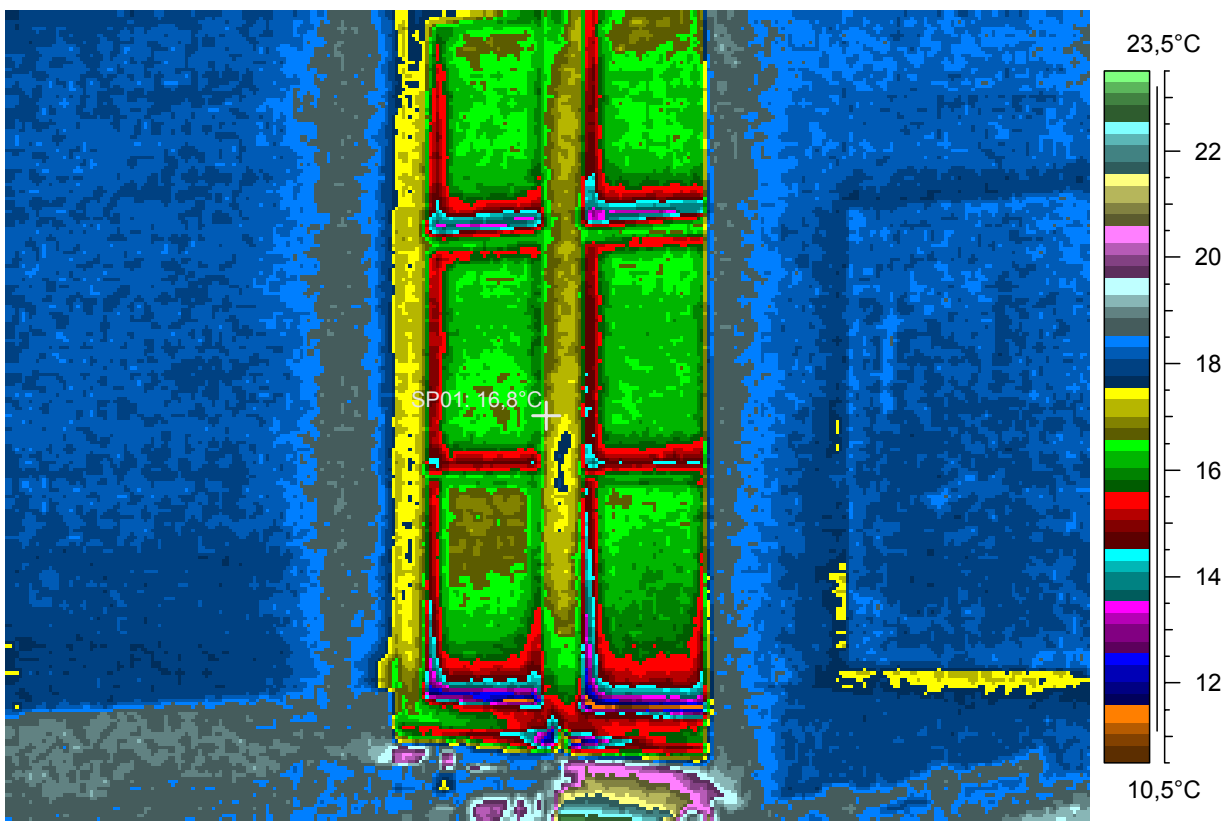
blabla

1 - Ir_2440.jpg

| Label | Value |
|----------|--------|
| IR : max | 23,5°C |
| IR : min | 10,7°C |
| SP01 | 16,8°C |

15.3.2005

20:37:53



comments:

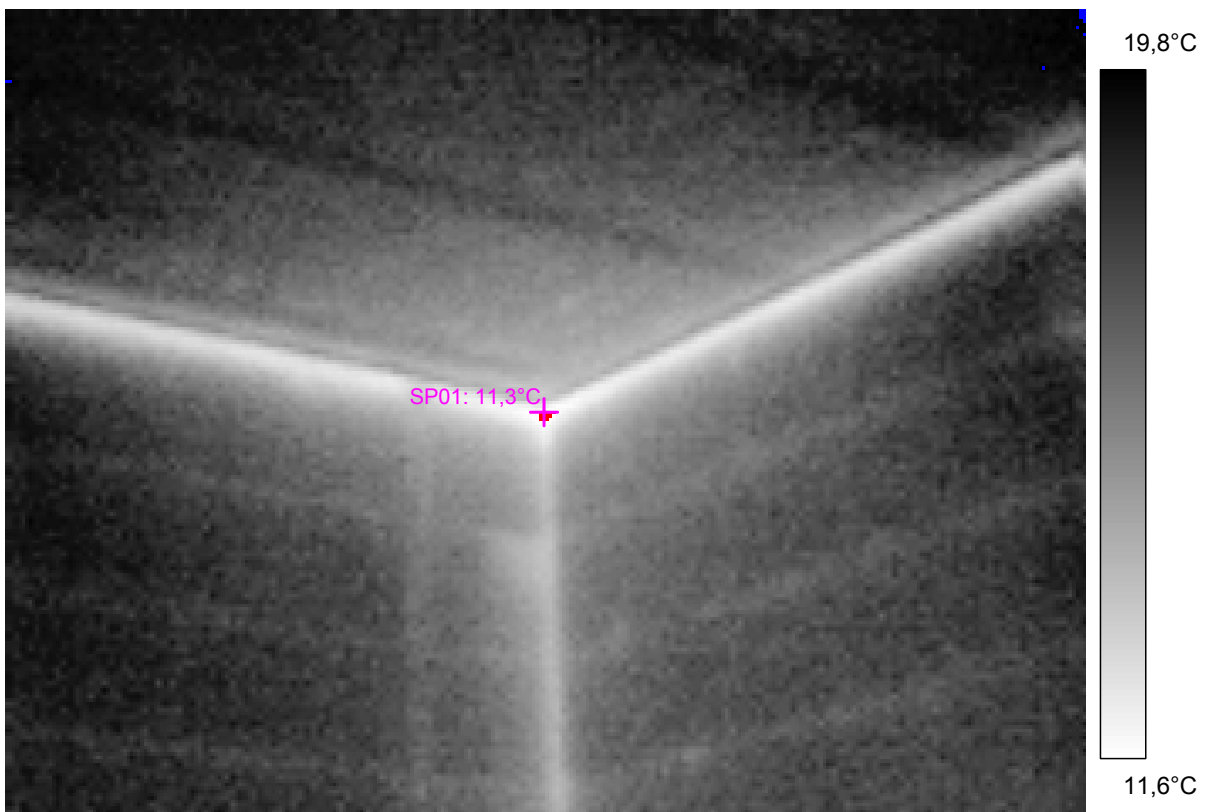
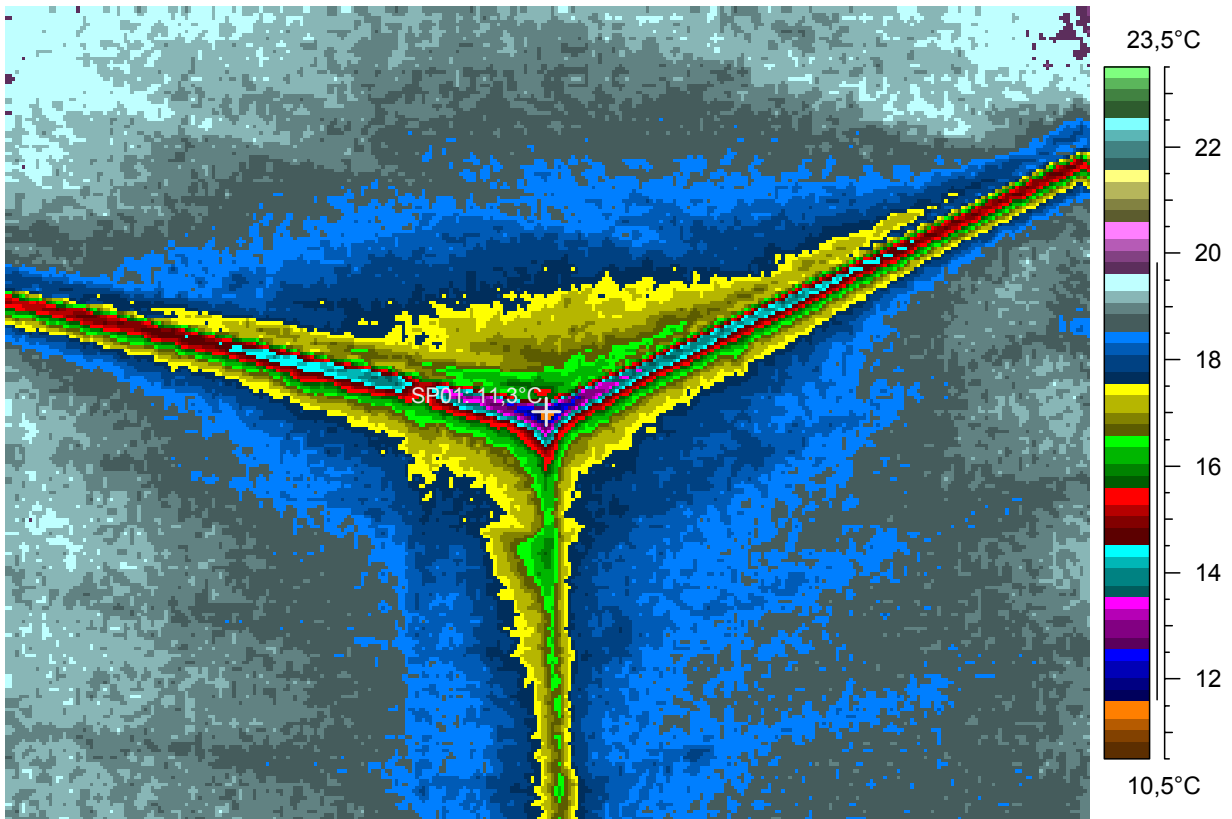
blabla

2 - Ir_2441.jpg

| Label | Value |
|----------|--------|
| IR : max | 20,0°C |
| IR : min | 11,2°C |
| SP01 | 11,3°C |

15.3.2005

20:47:30



comments:

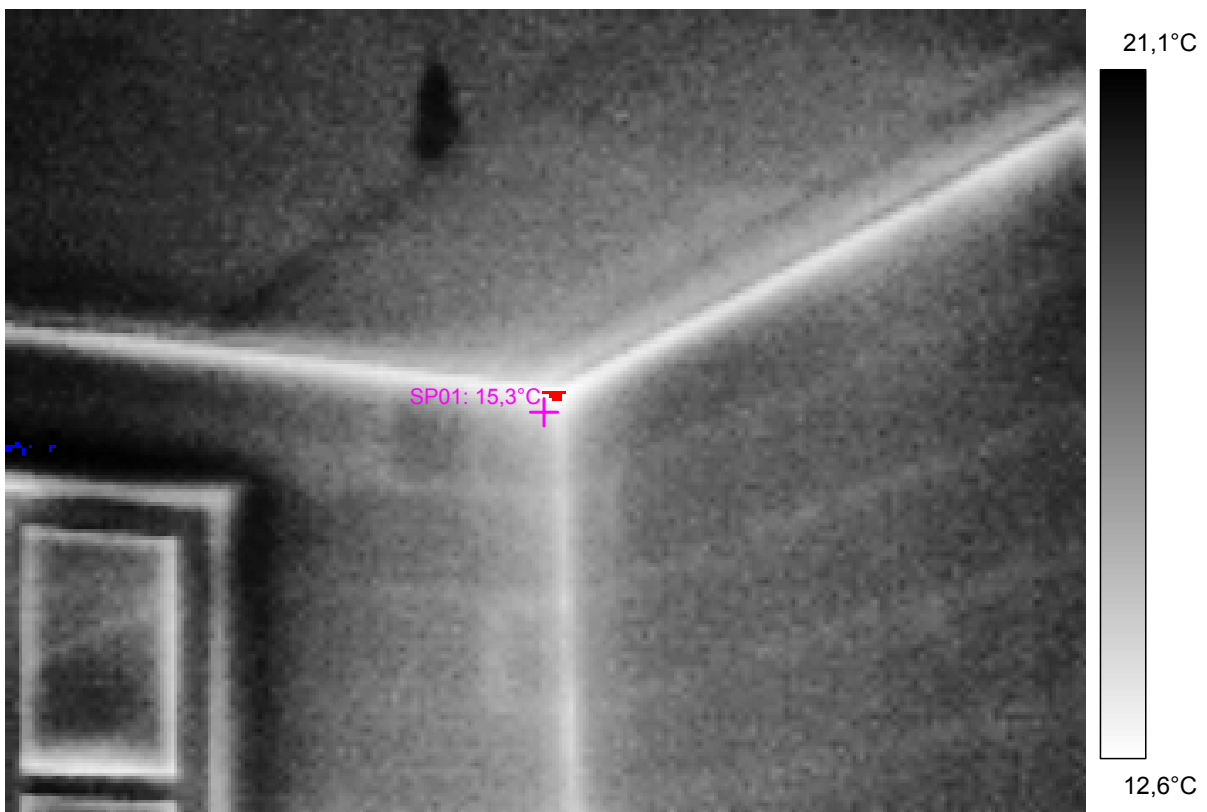
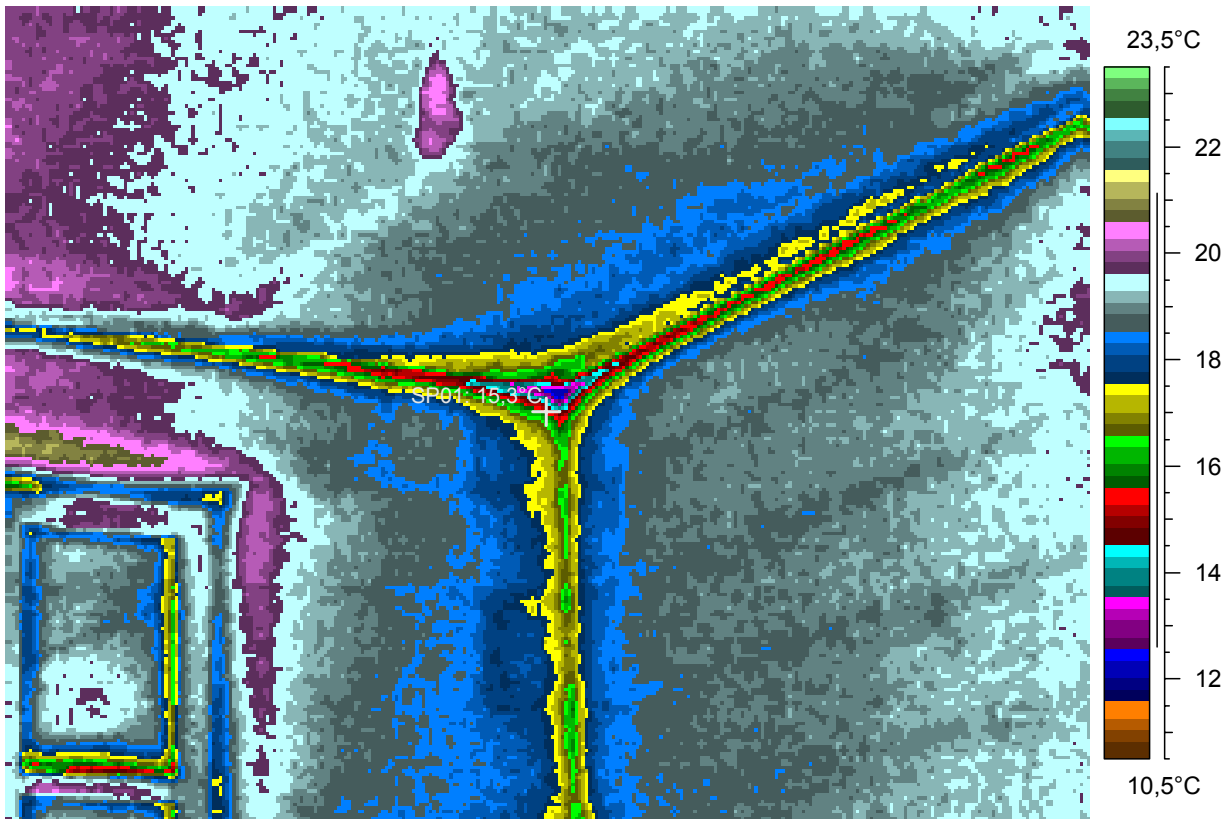
blabla

3 - Ir_2442.jpg

| Label | Value |
|----------|--------|
| IR : max | 21,2°C |
| IR : min | 12,1°C |
| SP01 | 15,3°C |

15.3.2005

20:50:59



comments:

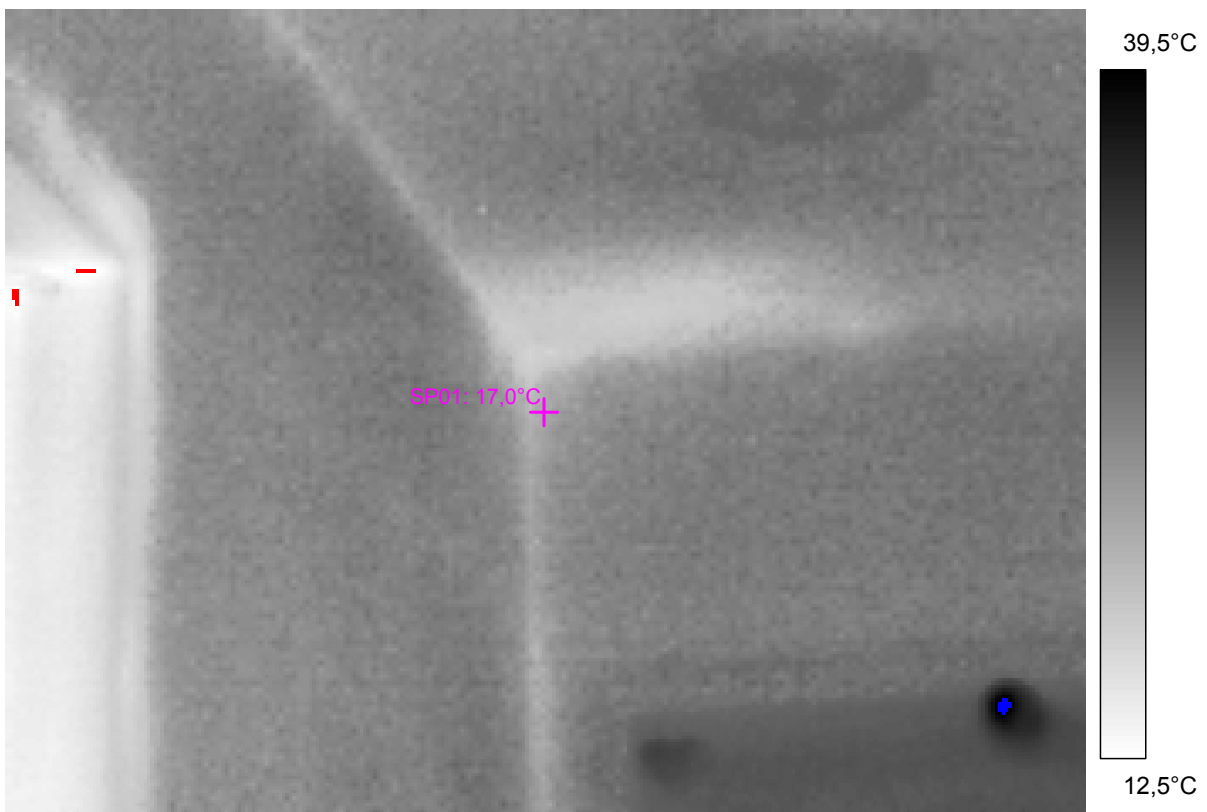
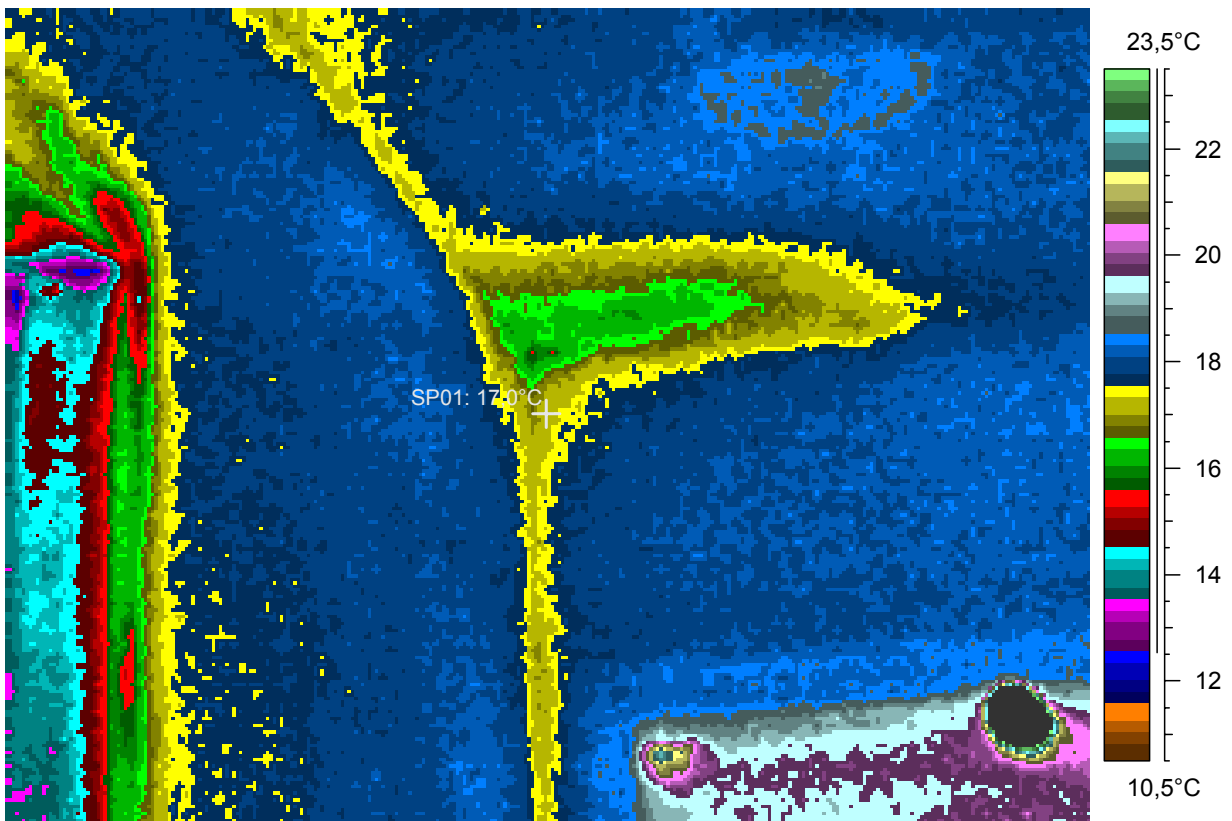
blabla

4 - Ir_2443.jpg

| Label | Value |
|----------|--------|
| IR : max | 42,6°C |
| IR : min | 12,1°C |
| SP01 | 17,0°C |

15.3.2005

21:02:51



comments:

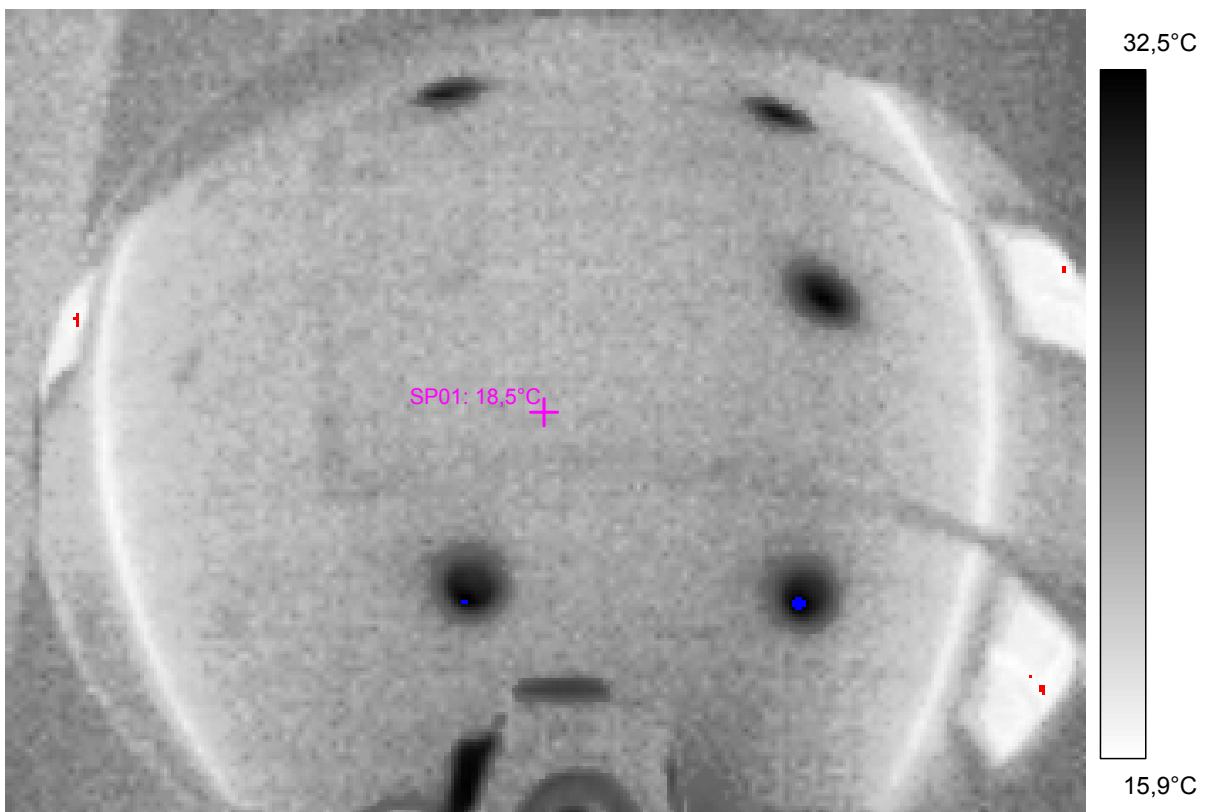
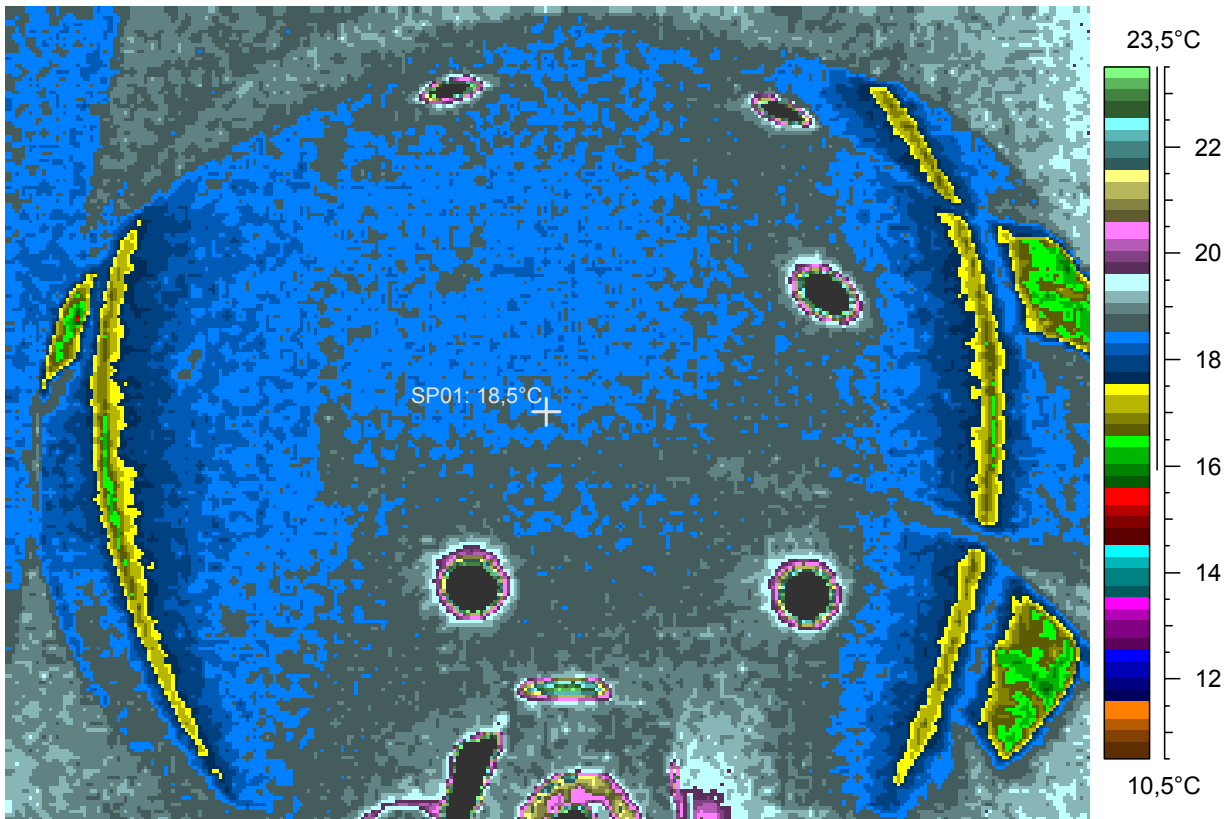
blabla

5 - Ir_2444.jpg

| Label | Value |
|----------|--------|
| IR : max | 35,2°C |
| IR : min | 15,3°C |
| SP01 | 18,5°C |

15.3.2005

21:09:53



comments:

blabla

6 - Ir_2445.jpg

| Label | Value |
|----------|--------|
| IR : max | 35,8°C |
| IR : min | 15,7°C |
| SP01 | 18,5°C |

15.3.2005

21:10:00

