

comments:

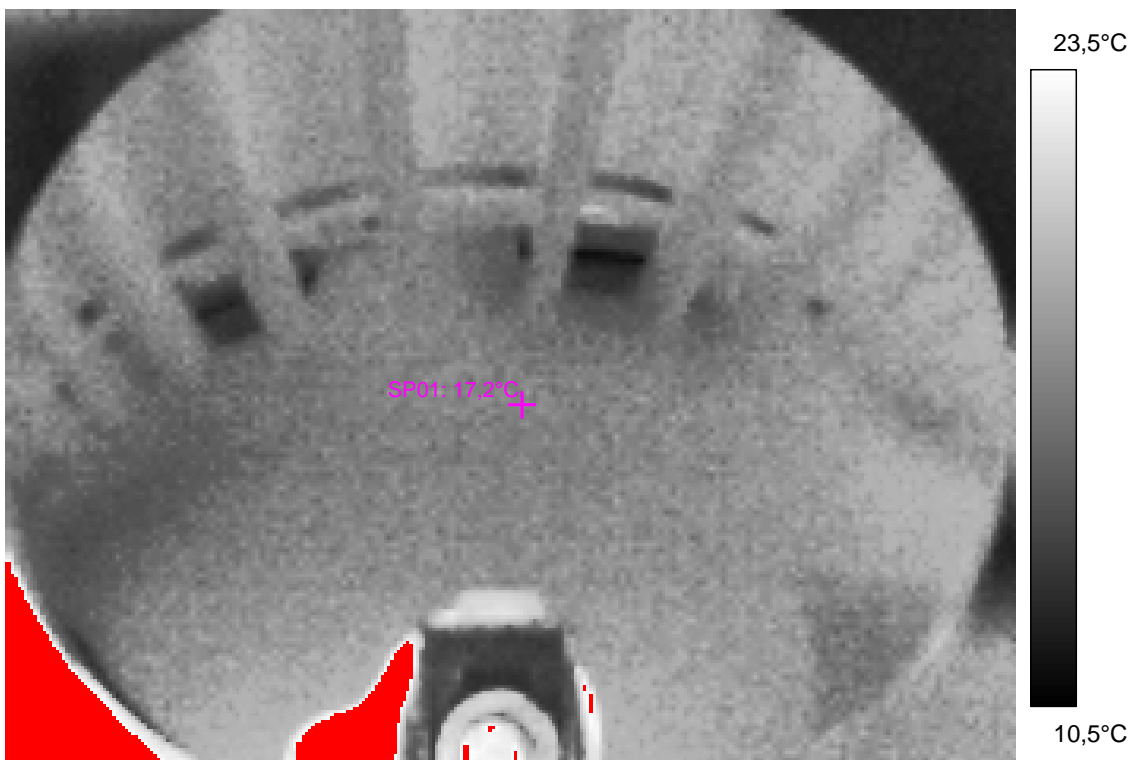
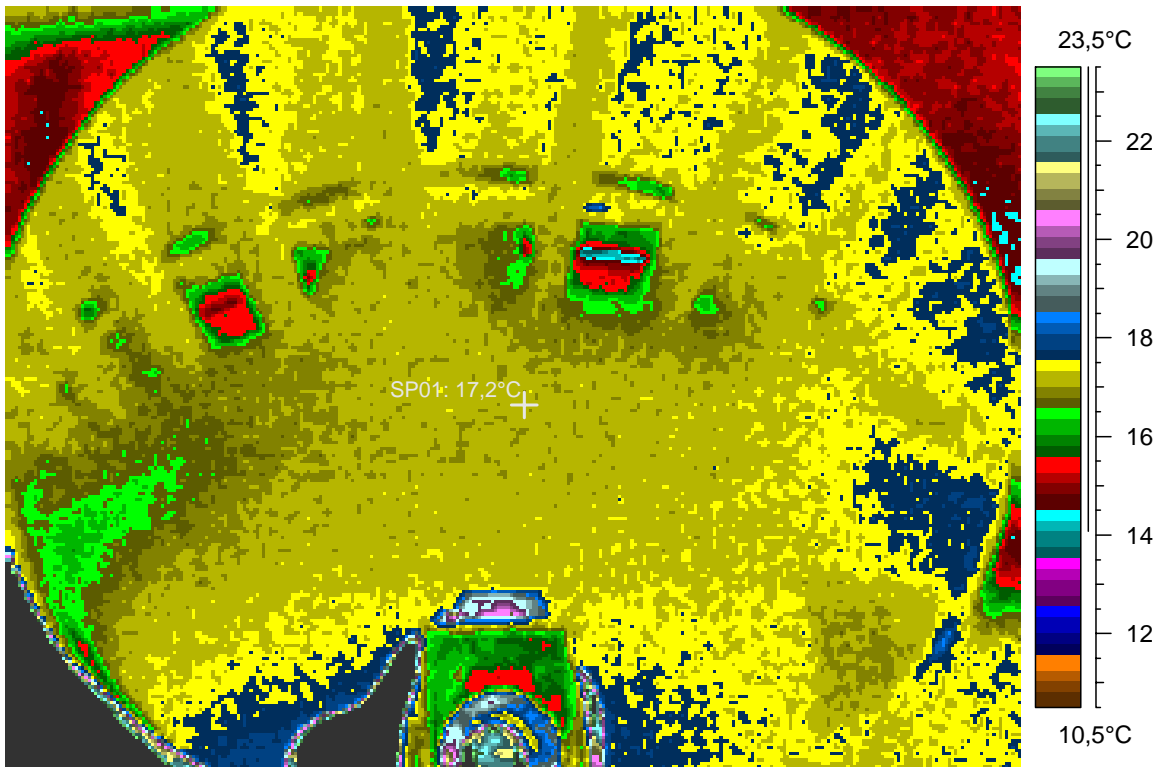
blabla

# 1 - Ir\_1322.jpg

| Label    | Value  |
|----------|--------|
| IR : max | 32,7°C |
| IR : min | 13,6°C |
| SP01     | 17,2°C |

3.1.2008

23:10:22



comments:

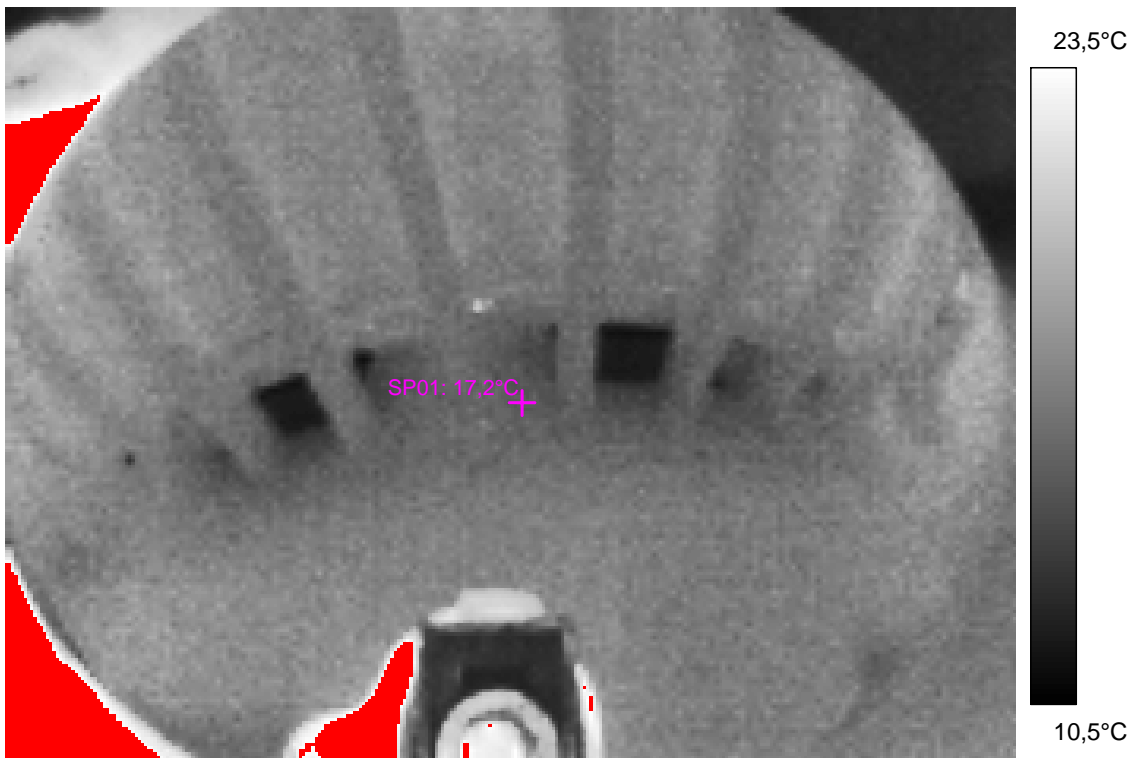
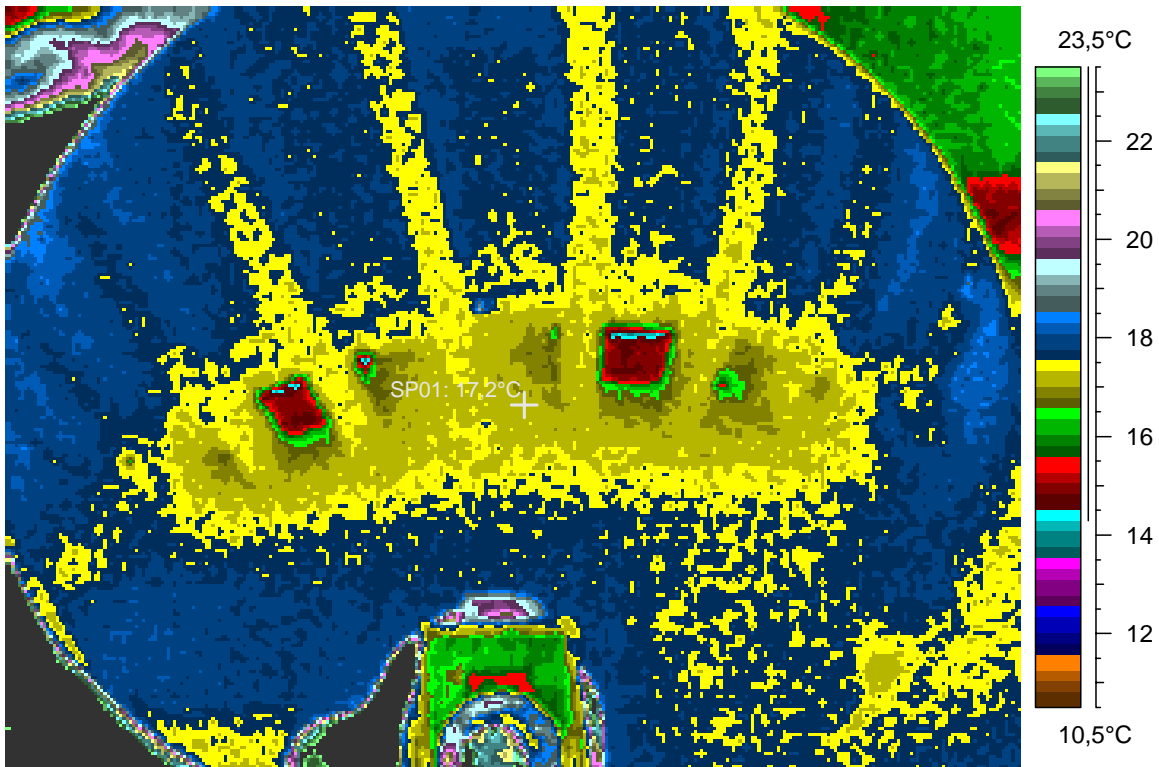
blabla

## 2 - Ir\_1323.jpg

| Label    | Value  |
|----------|--------|
| IR : max | 30,9°C |
| IR : min | 13,8°C |
| SP01     | 17,2°C |

3.1.2008

23:10:34



comments:

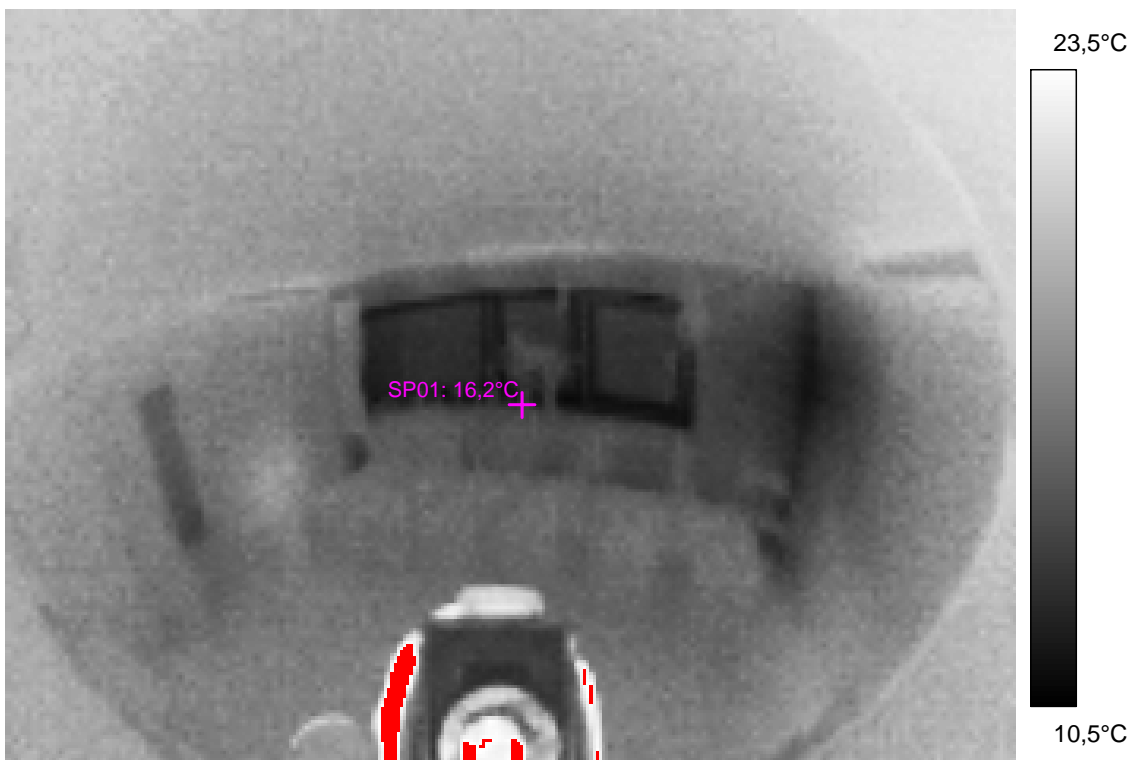
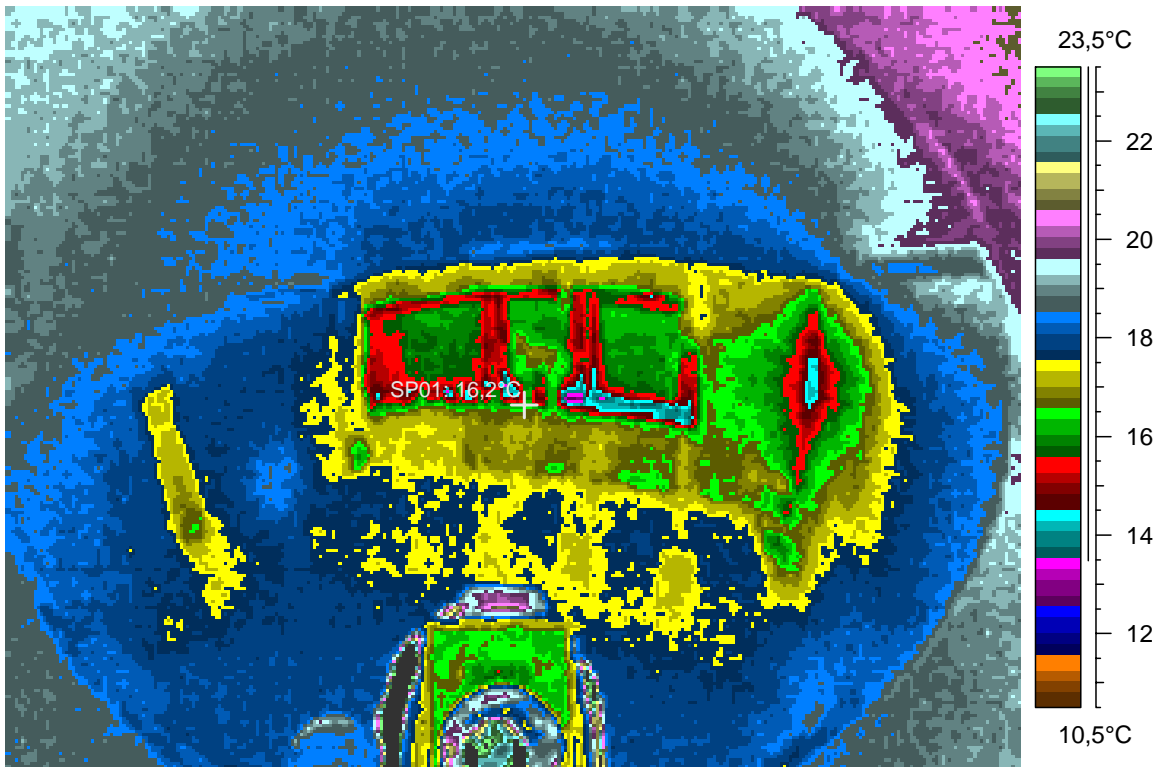
blabla

### 3 - Ir\_1324.jpg

| Label    | Value  |
|----------|--------|
| IR : max | 29,7°C |
| IR : min | 12,7°C |
| SP01     | 16,2°C |

3.1.2008

23:11:47



comments:

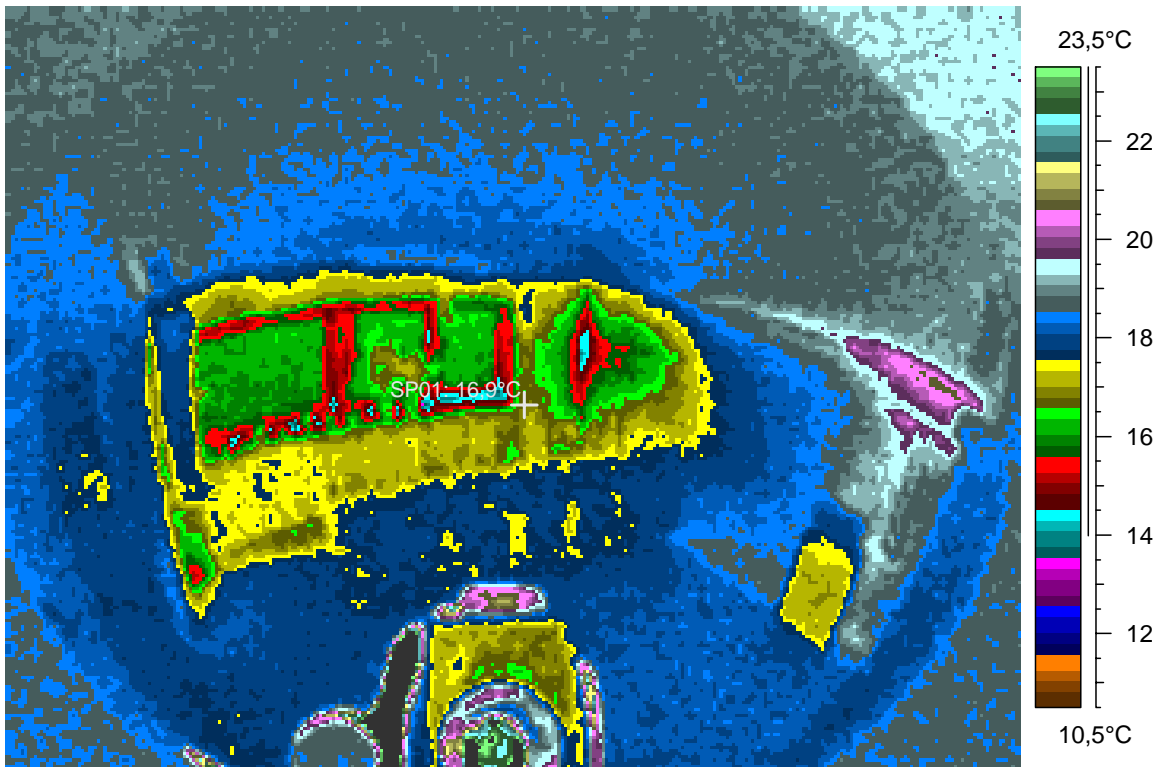
blabla

### 4 - Ir\_1325.jpg

| Label    | Value  |
|----------|--------|
| IR : max | 30,4°C |
| IR : min | 13,5°C |
| SP01     | 16,9°C |

3.1.2008

23:12:53



comments:

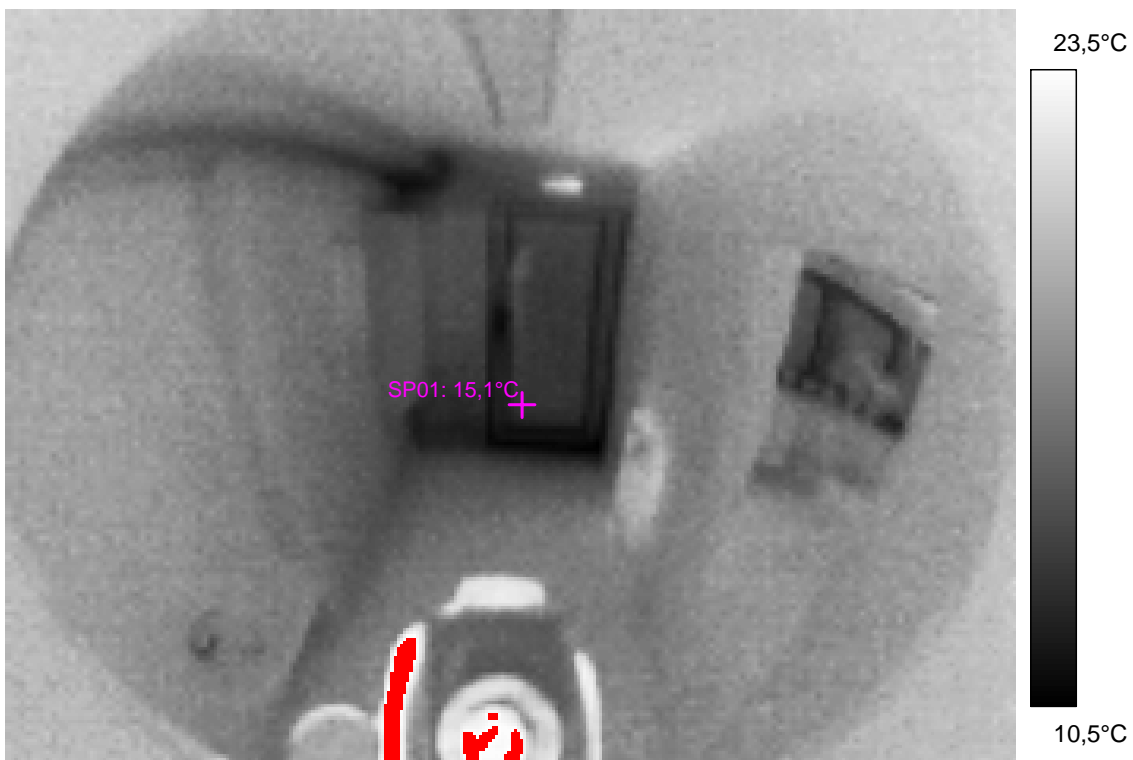
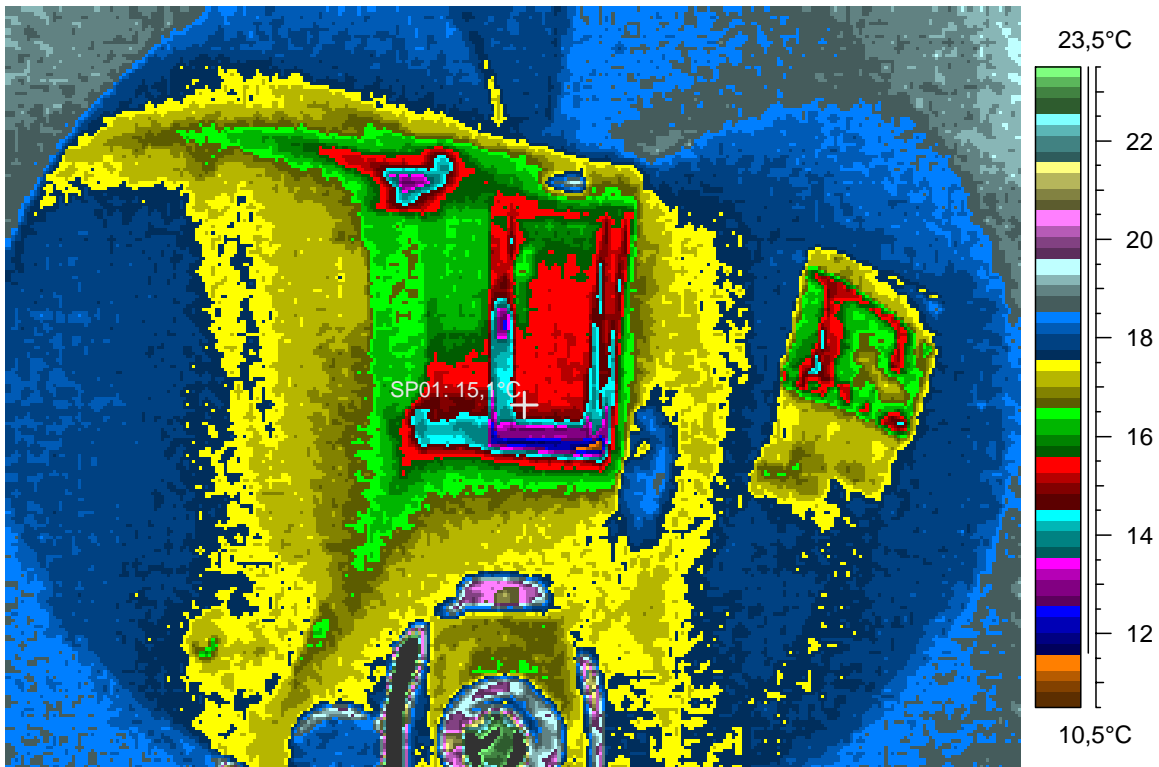
blabla

## 5 - Ir\_1326.jpg

| Label    | Value  |
|----------|--------|
| IR : max | 29,7°C |
| IR : min | 10,9°C |
| SP01     | 15,1°C |

3.1.2008

23:13:21



comments:

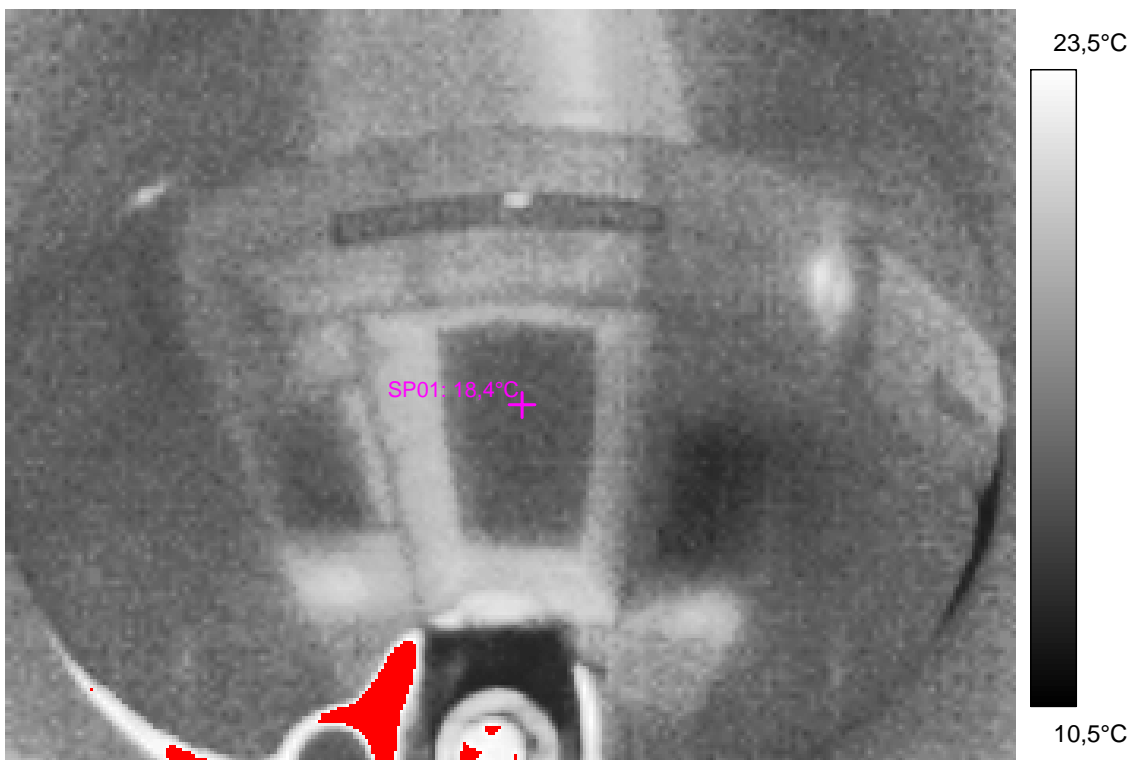
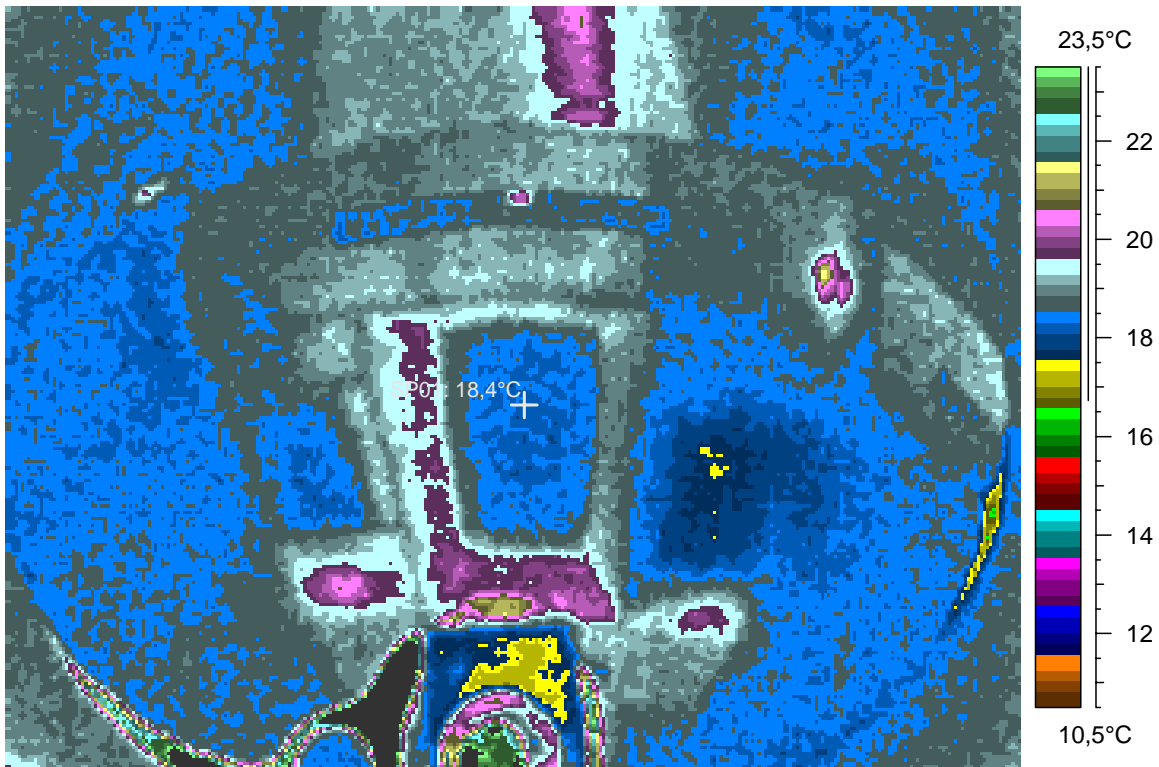
blabla

## 6 - Ir\_1327.jpg

| Label    | Value  |
|----------|--------|
| IR : max | 31,4°C |
| IR : min | 16,4°C |
| SP01     | 18,4°C |

3.1.2008

23:13:52



comments:

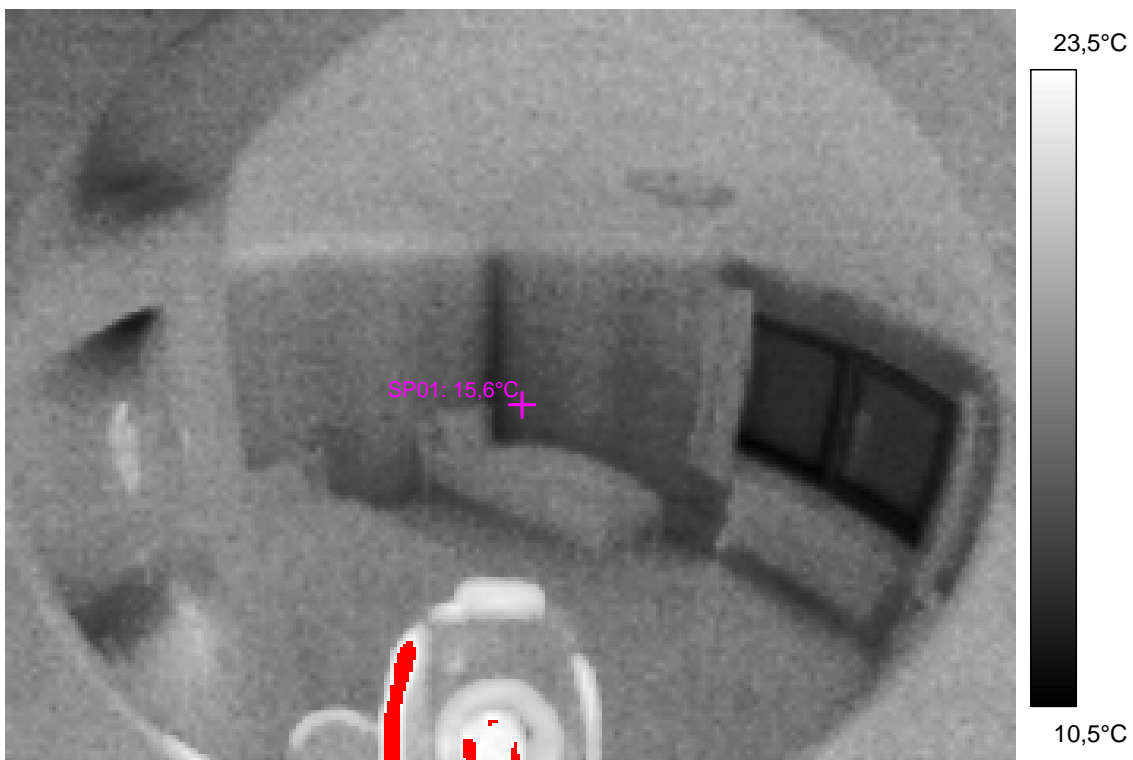
blabla

# 7 - Ir\_1328.jpg

| Label    | Value  |
|----------|--------|
| IR : max | 29,1°C |
| IR : min | 11,3°C |
| SP01     | 15,6°C |

3.1.2008

23:14:23



comments:

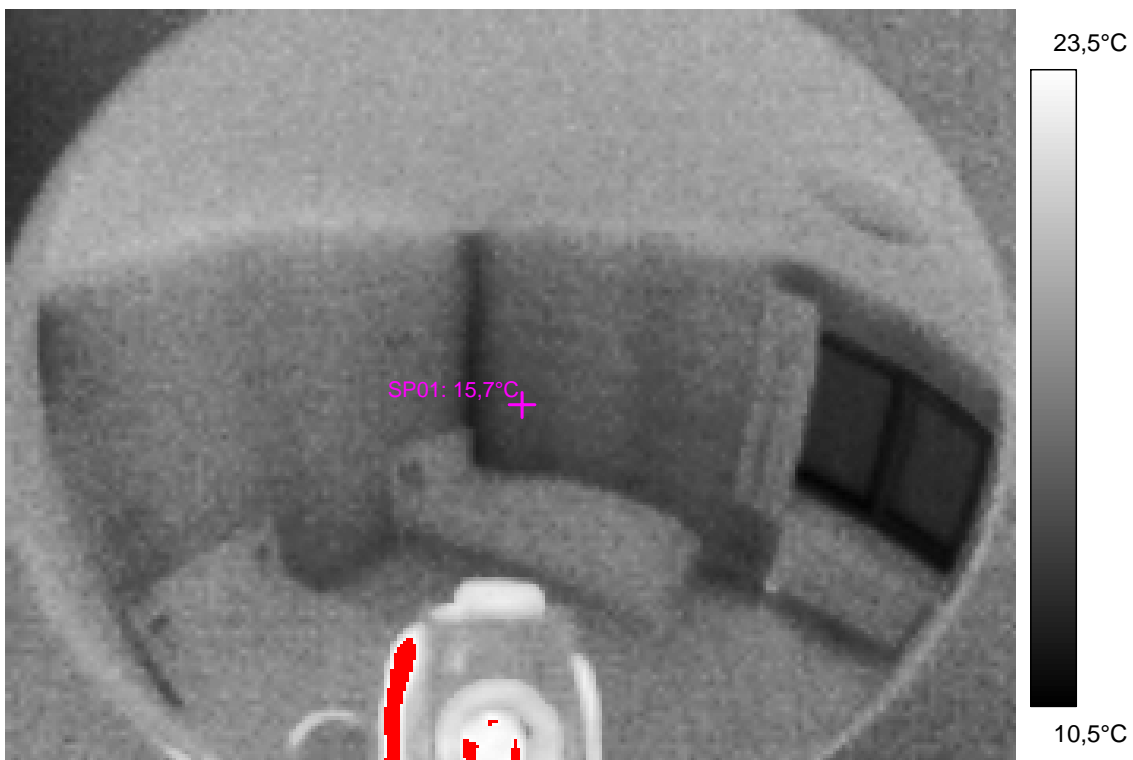
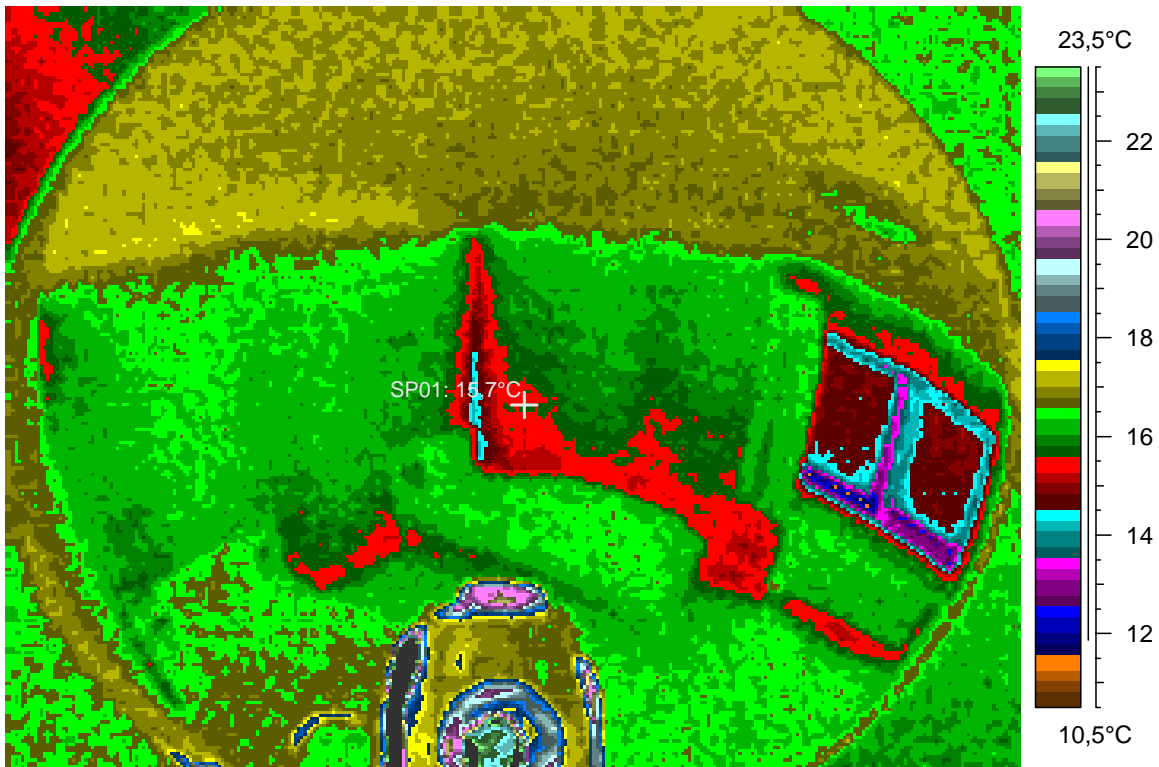
blabla

## 8 - Ir\_1329.jpg

| Label    | Value  |
|----------|--------|
| IR : max | 29,4°C |
| IR : min | 11,4°C |
| SP01     | 15,7°C |

3.1.2008

23:14:32





comments:

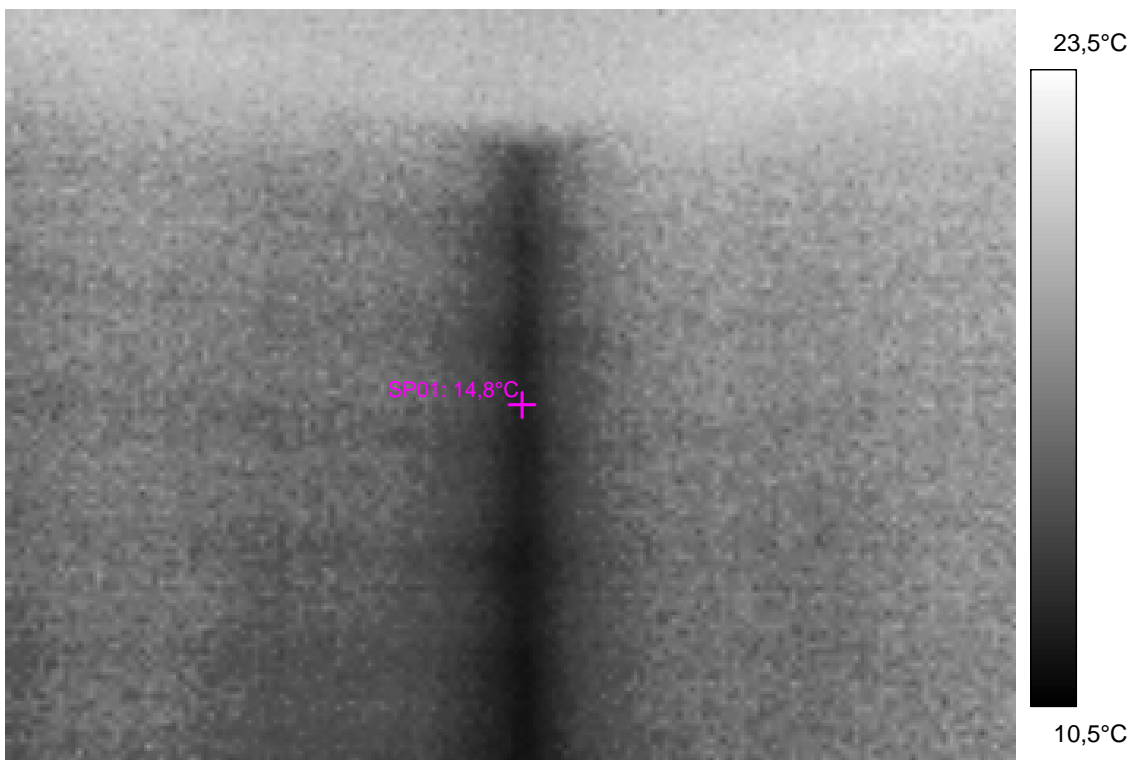
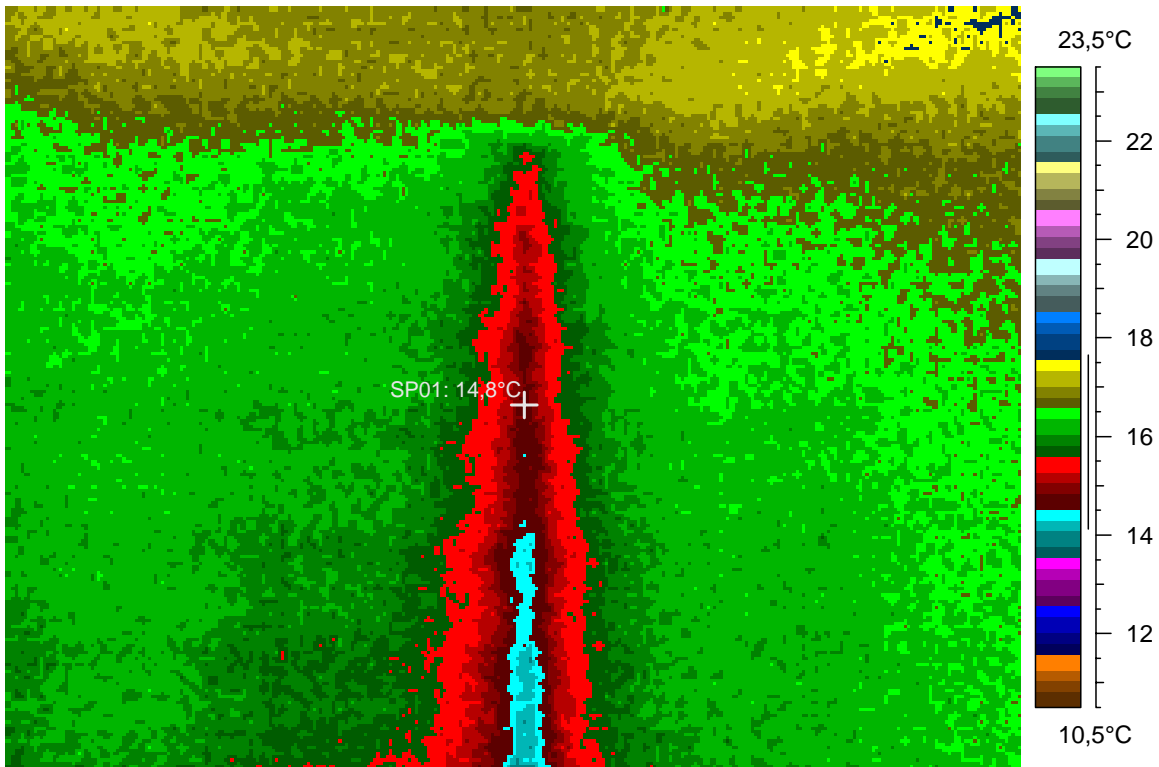
blabla

# 9 - Ir\_1330.jpg

| Label    | Value  |
|----------|--------|
| IR : max | 17,8°C |
| IR : min | 14,0°C |
| SP01     | 14,8°C |

3.1.2008

23:16:24



comments:

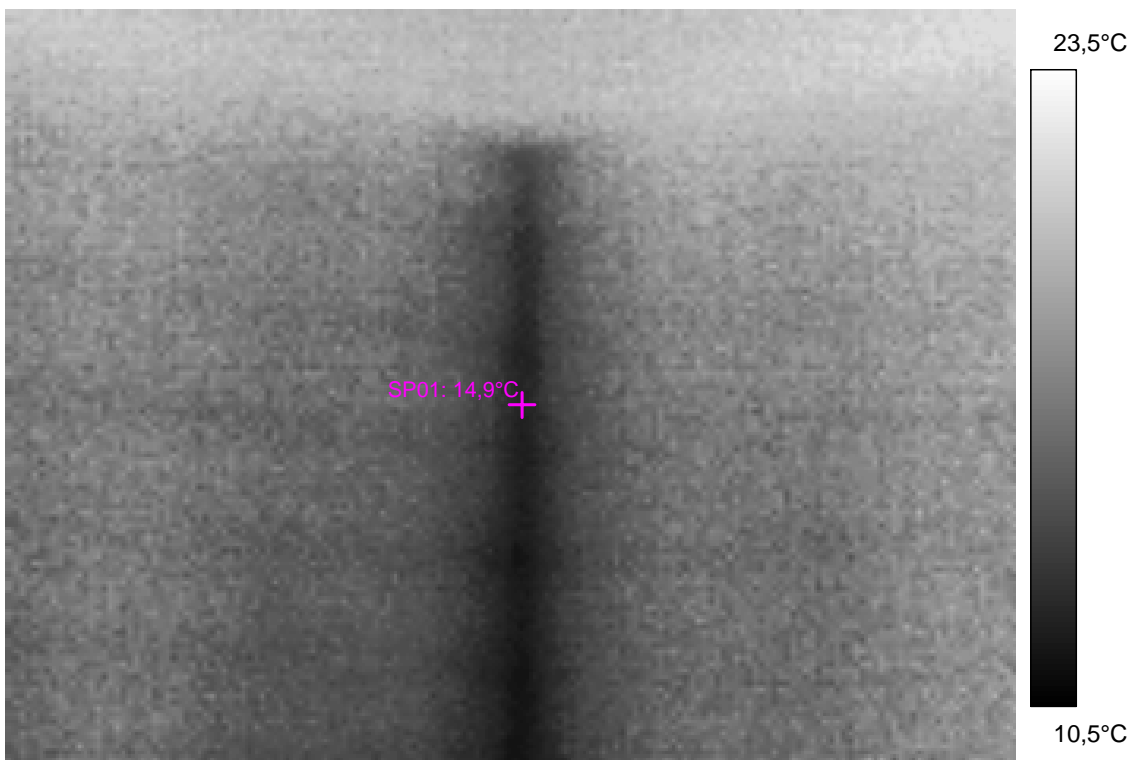
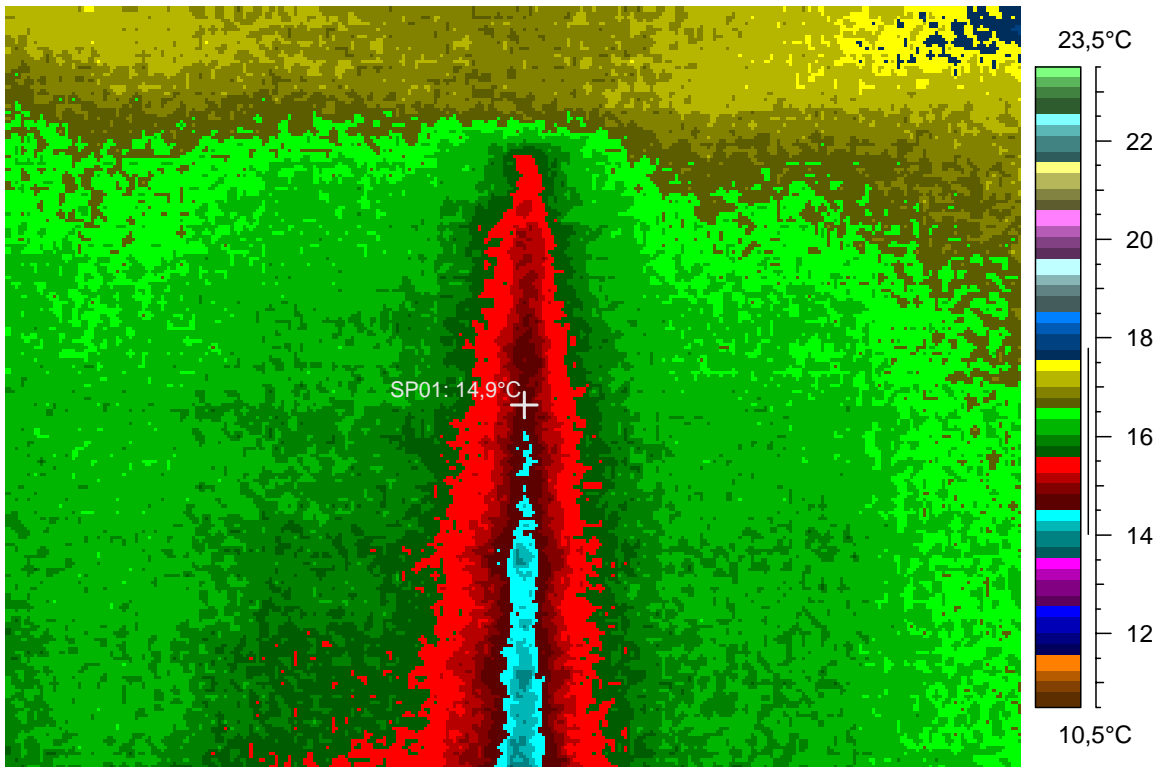
blabla

# 10 - Ir\_1331.jpg

| Label    | Value  |
|----------|--------|
| IR : max | 17,9°C |
| IR : min | 13,8°C |
| SP01     | 14,9°C |

3.1.2008

23:16:39



comments:

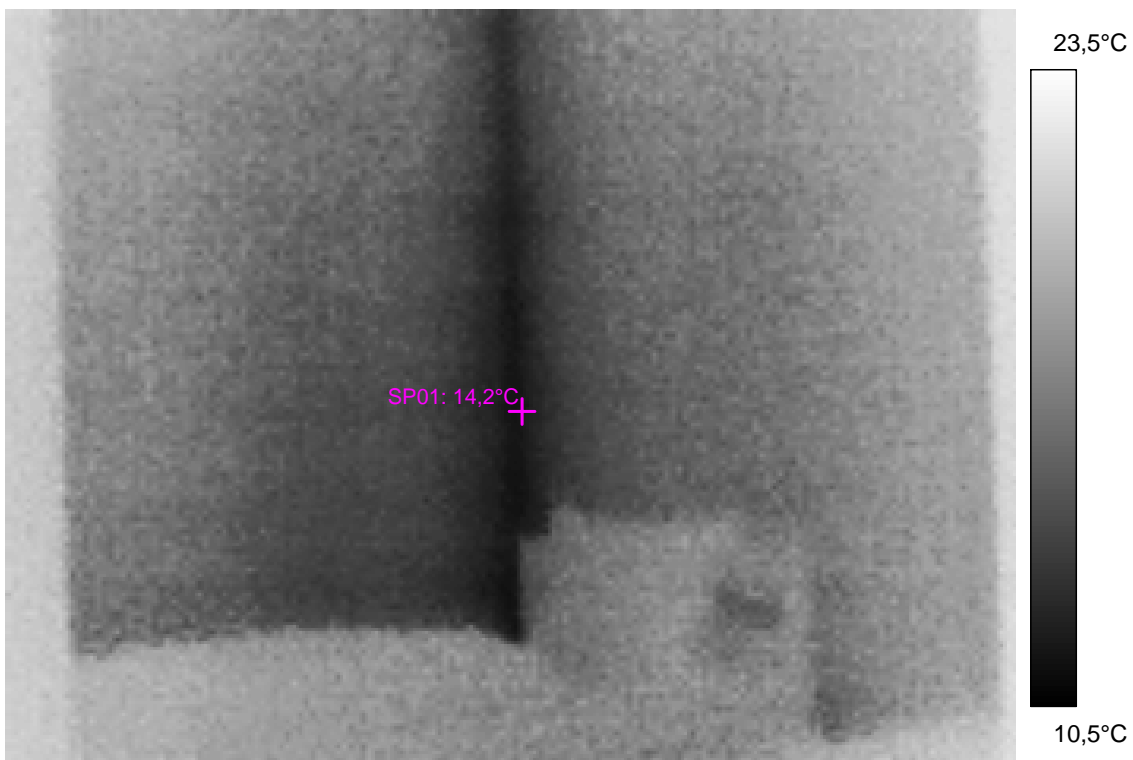
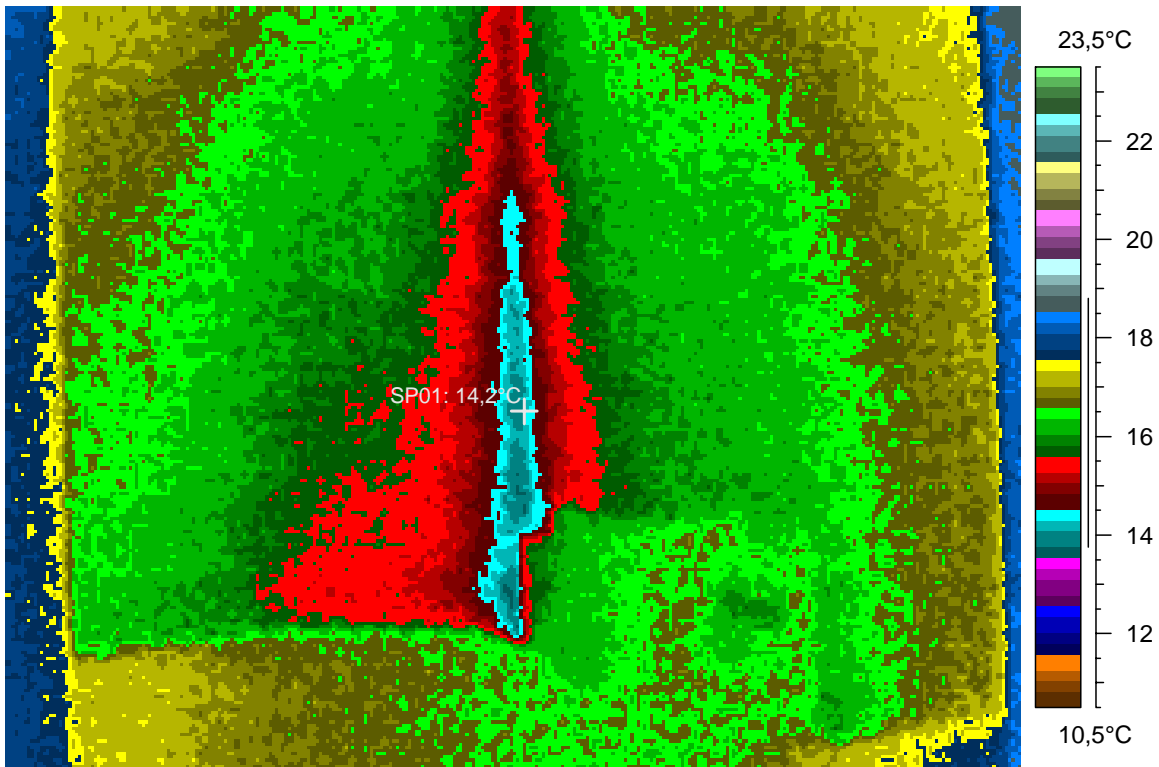
blabla

# 11 - Ir\_1332.jpg

| Label    | Value  |
|----------|--------|
| IR : max | 18,9°C |
| IR : min | 13,6°C |
| SP01     | 14,2°C |

3.1.2008

23:17:58



comments:

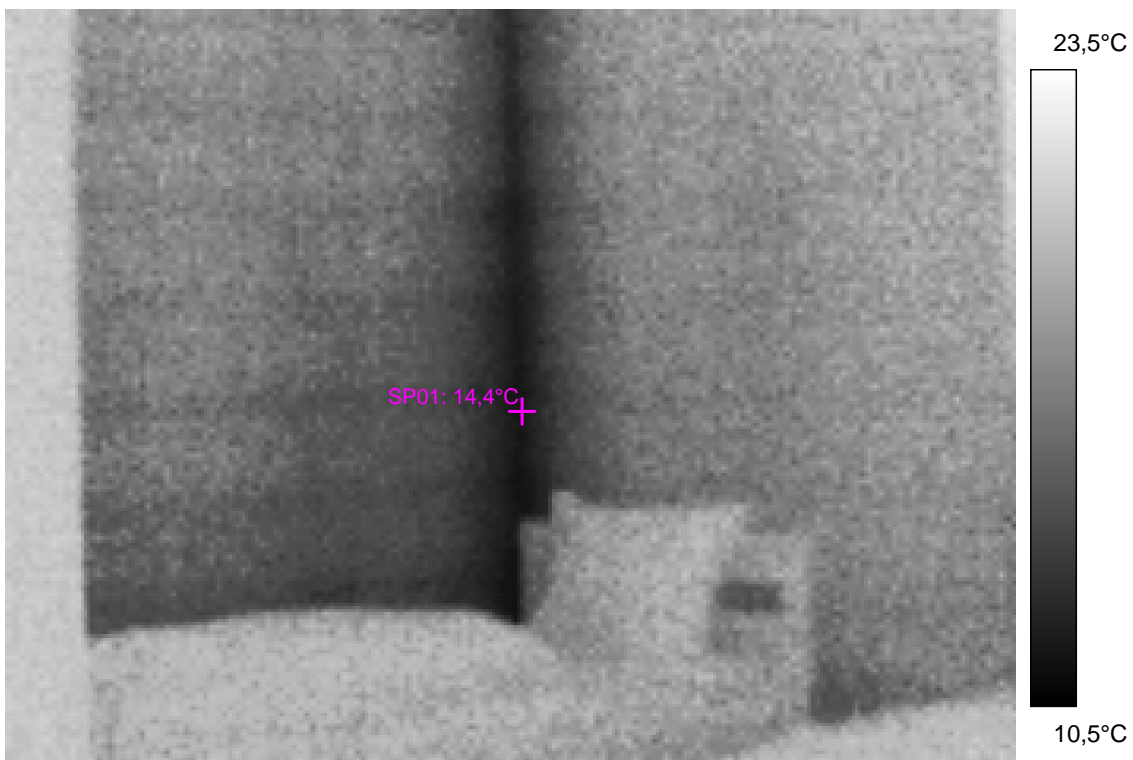
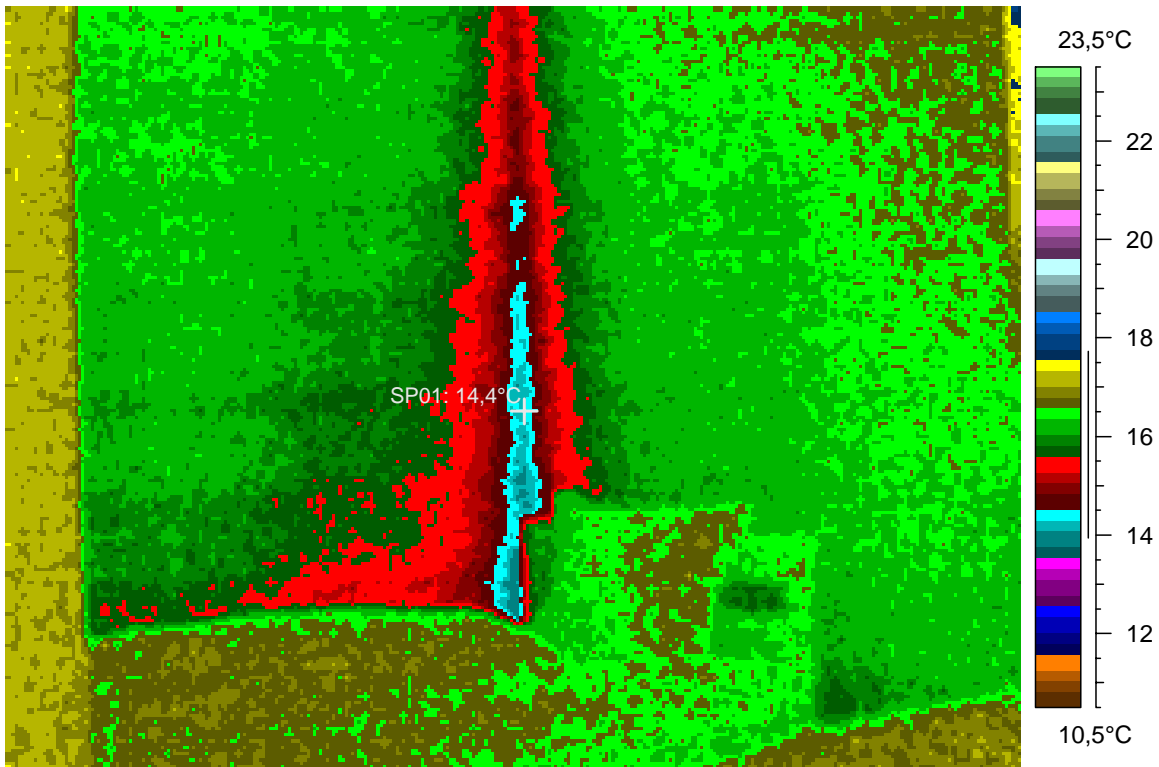
blabla

## 12 - Ir\_1333.jpg

| Label    | Value  |
|----------|--------|
| IR : max | 17,9°C |
| IR : min | 13,8°C |
| SP01     | 14,4°C |

3.1.2008

23:18:42



comments:

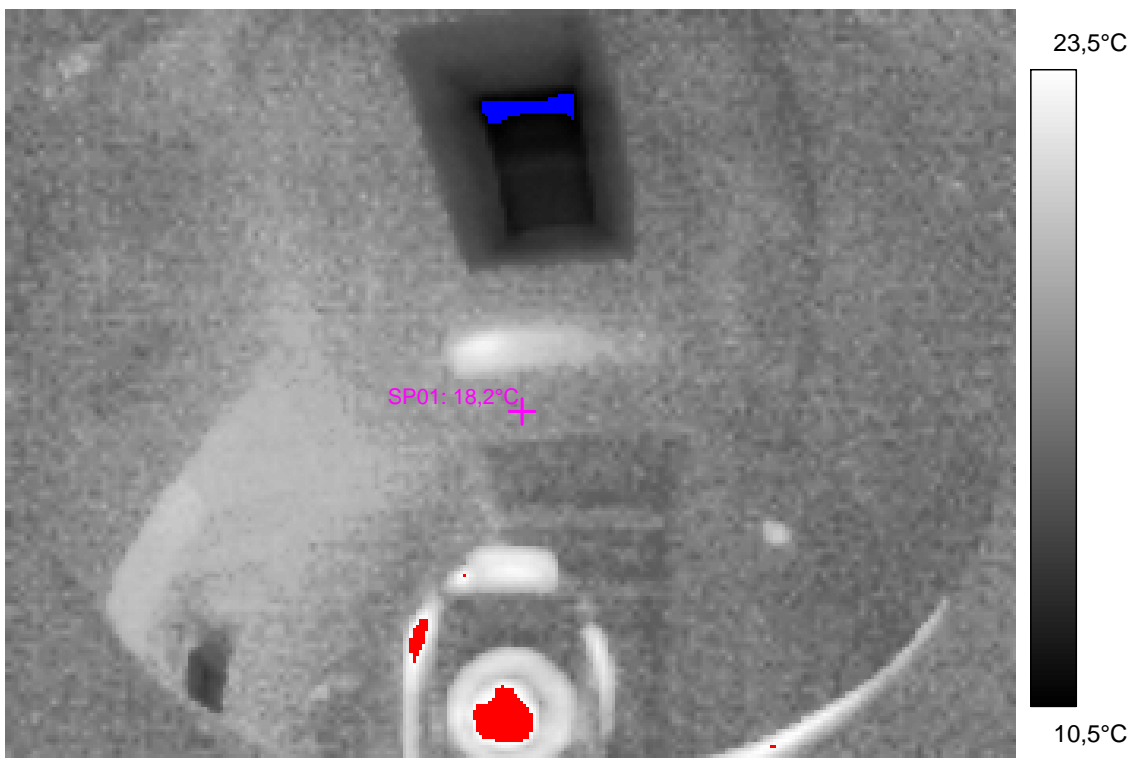
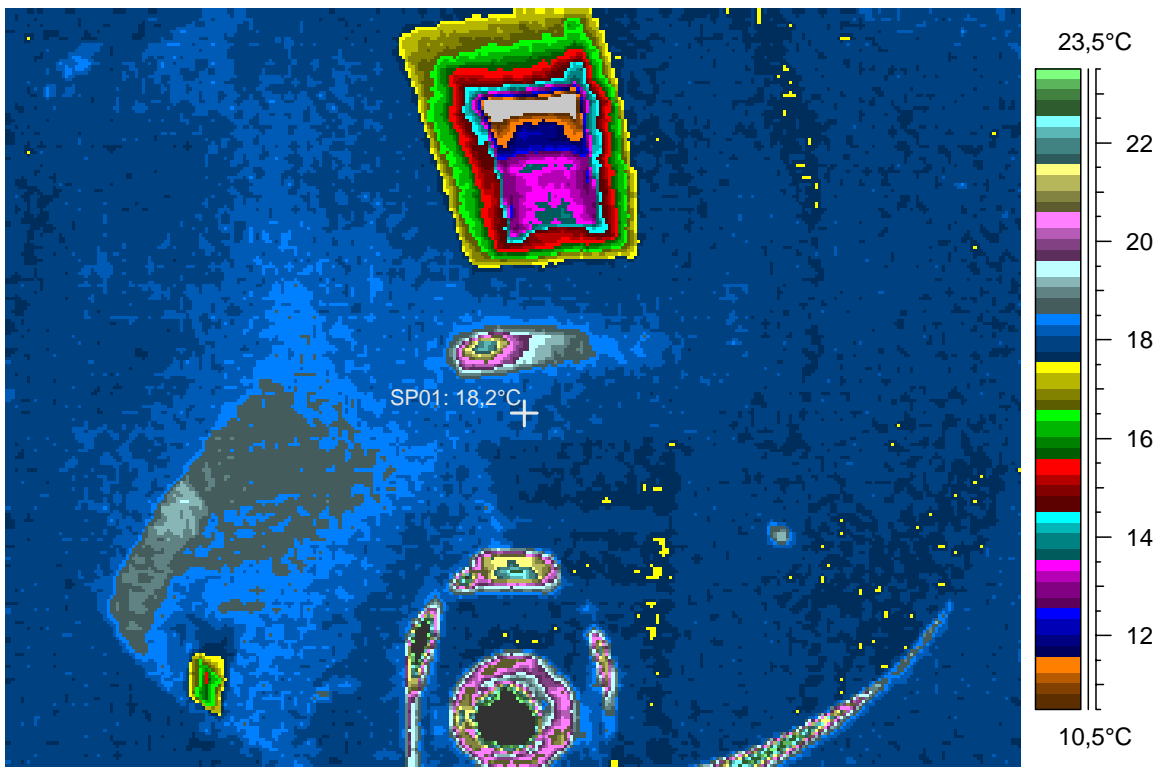
blabla

# 13 - Ir\_1334.jpg

| Label    | Value  |
|----------|--------|
| IR : max | 27,7°C |
| IR : min | 8,5°C  |
| SP01     | 18,2°C |

3.1.2008

23:23:01



comments:

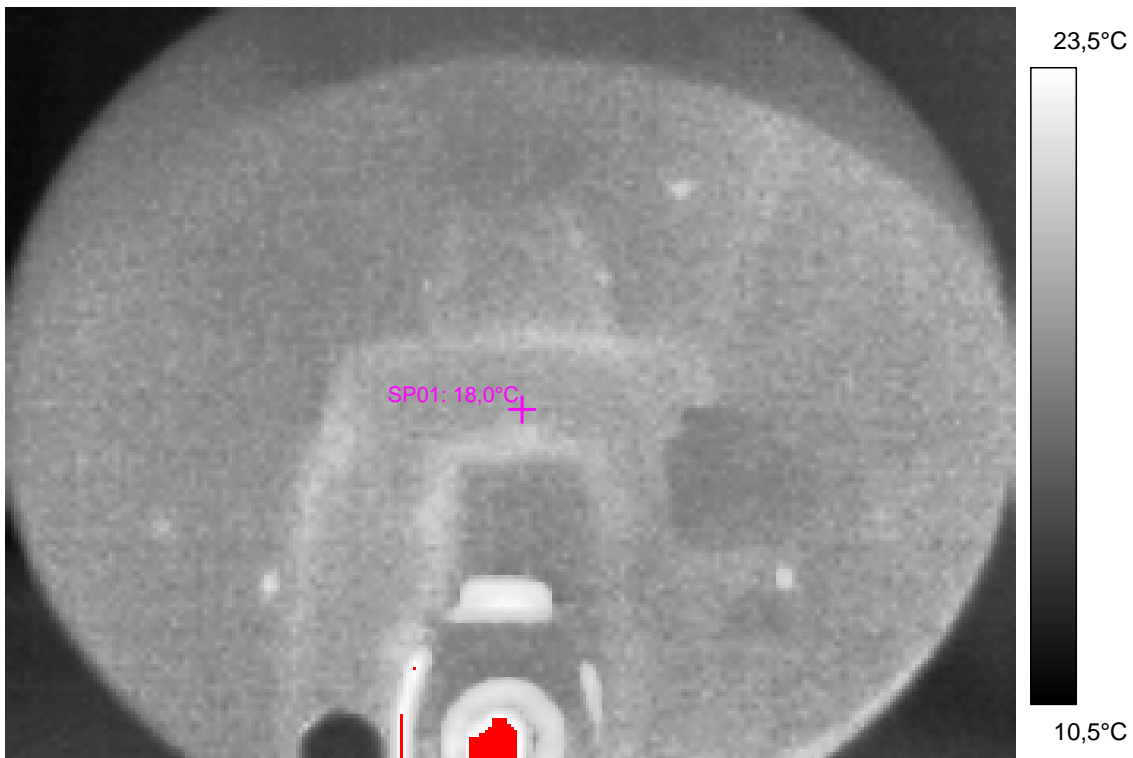
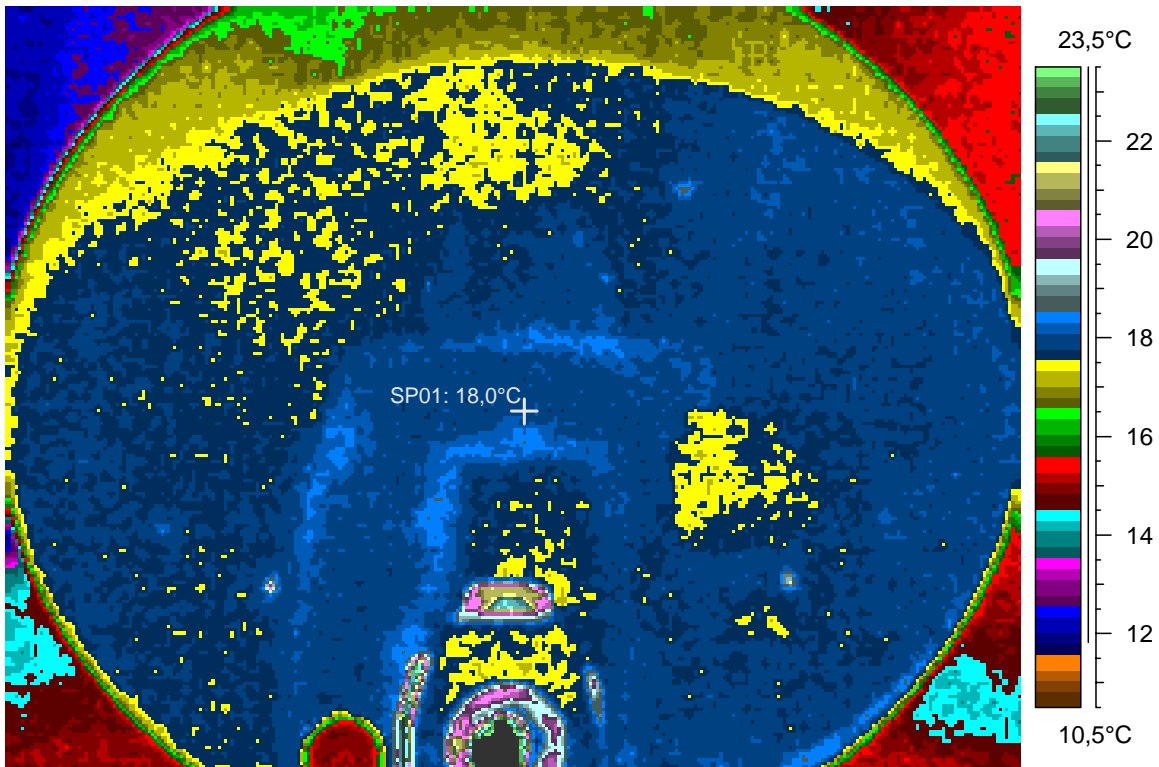
blabla

# 14 - Ir\_1335.jpg

| Label    | Value  |
|----------|--------|
| IR : max | 25,6°C |
| IR : min | 11,7°C |
| SP01     | 18,0°C |

3.1.2008

23:23:29



comments:

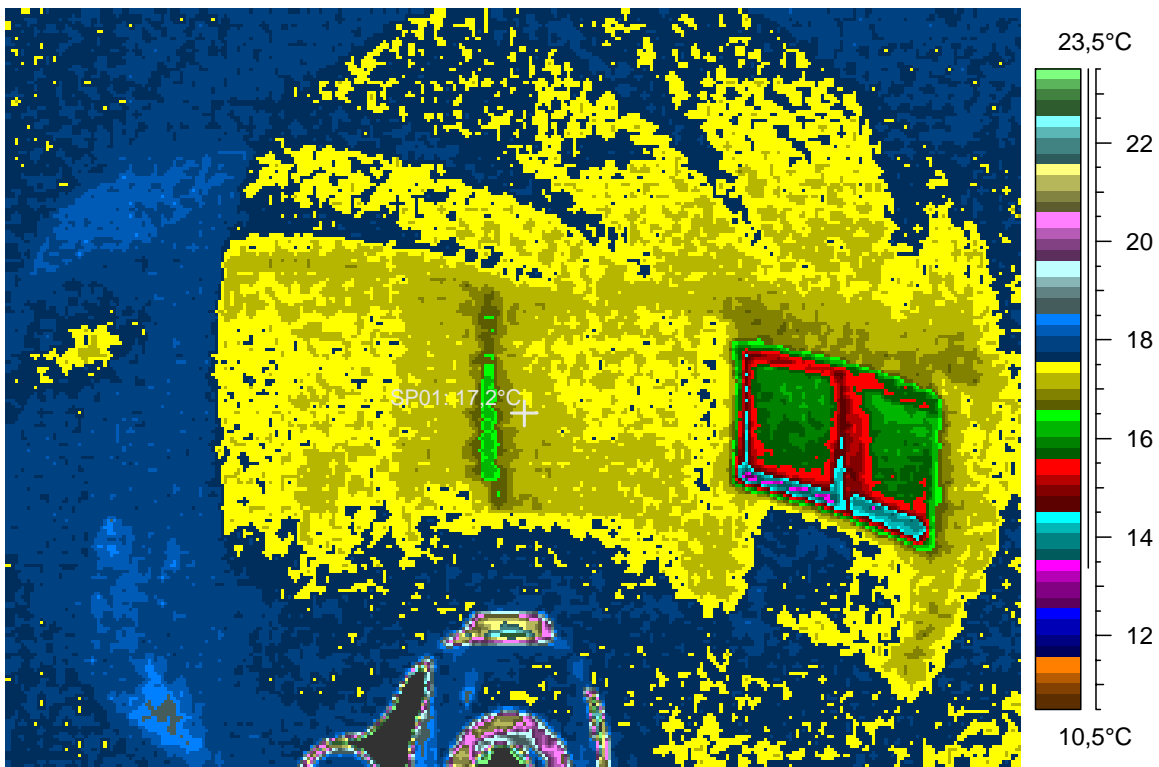
blabla

# 15 - Ir\_1336.jpg

| Label    | Value  |
|----------|--------|
| IR : max | 30,4°C |
| IR : min | 12,7°C |
| SP01     | 17,2°C |

3.1.2008

23:23:56



comments:

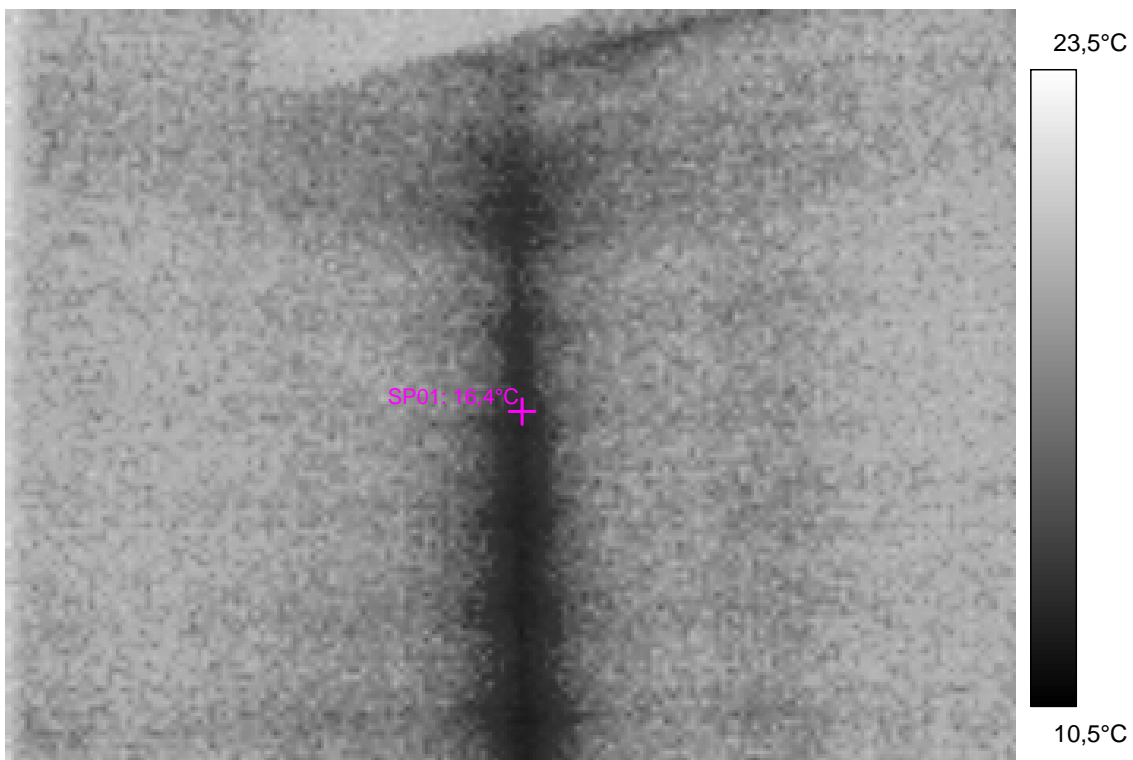
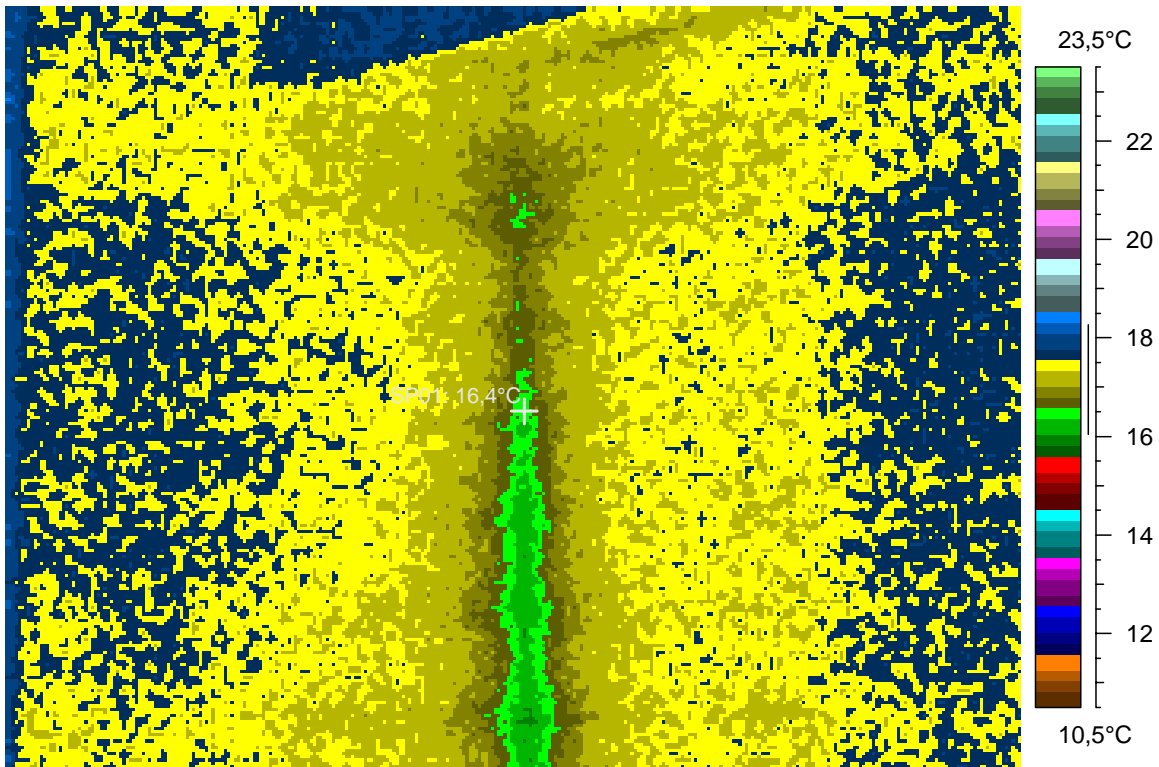
blabla

# 16 - Ir\_1337.jpg

| Label    | Value  |
|----------|--------|
| IR : max | 18,4°C |
| IR : min | 15,9°C |
| SP01     | 16,4°C |

3.1.2008

23:24:28





comments:

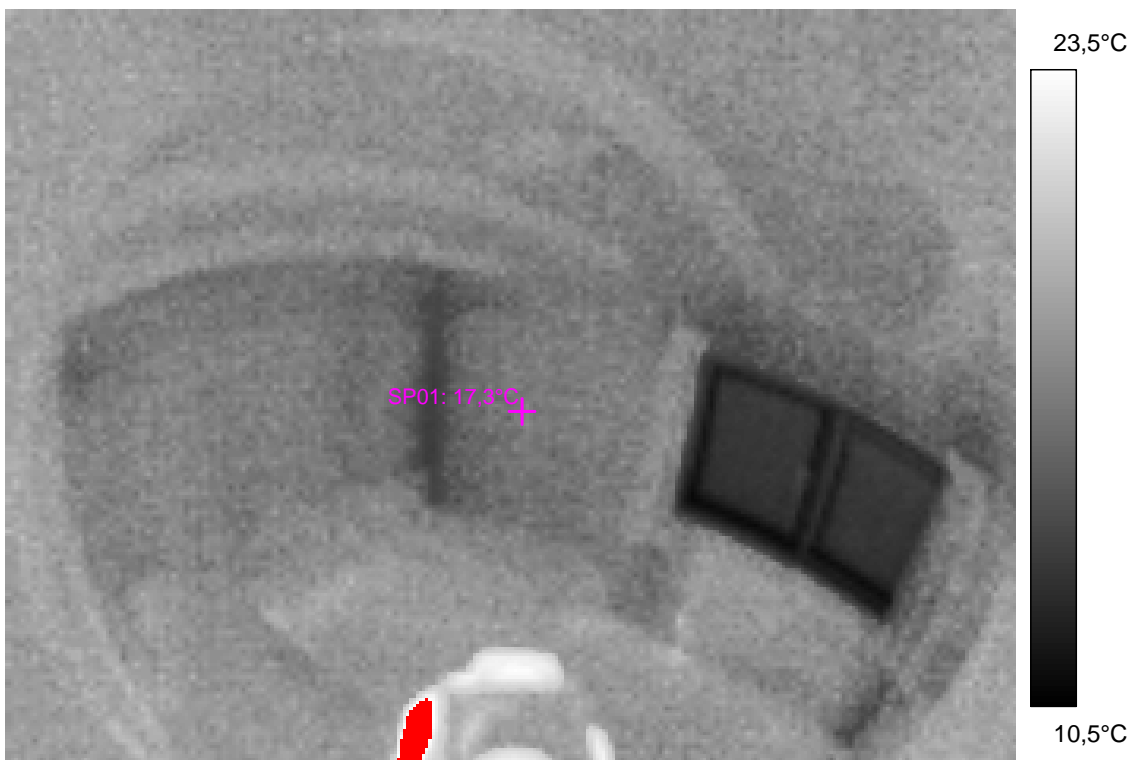
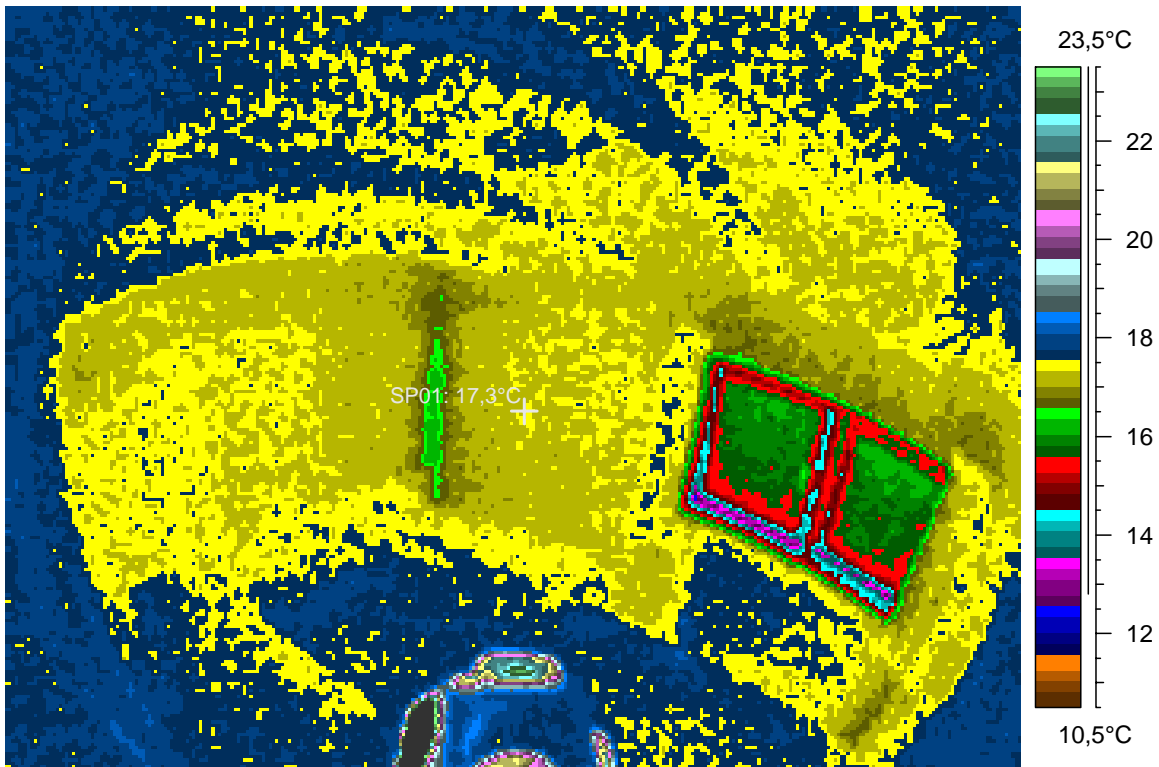
blabla

# 17 - Ir\_1338.jpg

| Label    | Value  |
|----------|--------|
| IR : max | 30,3°C |
| IR : min | 12,5°C |
| SP01     | 17,3°C |

3.1.2008

23:26:14



comments:

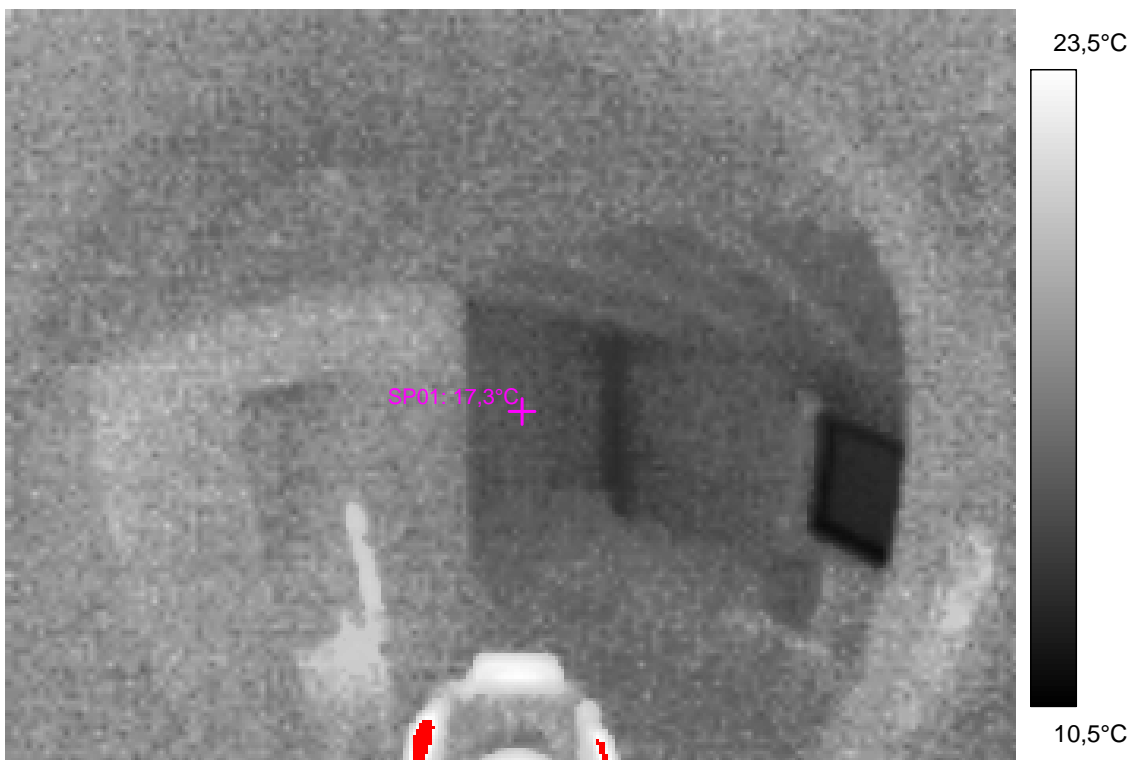
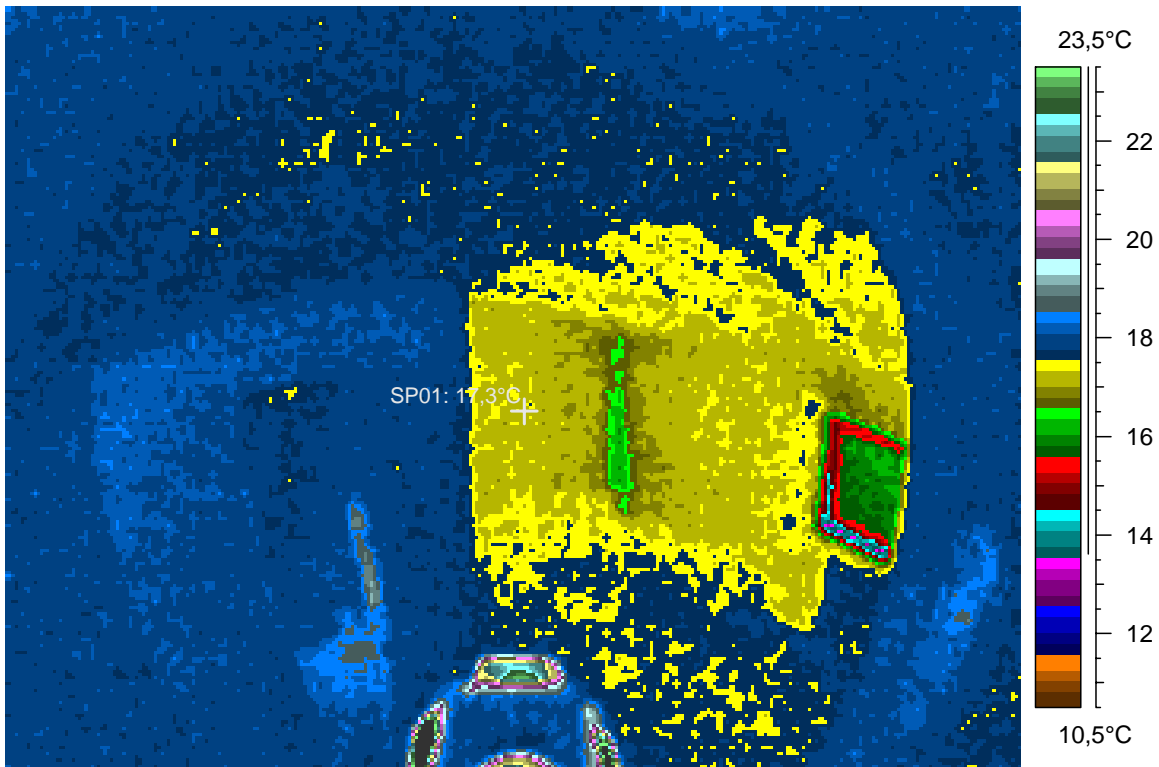
blabla

# 18 - Ir\_1339.jpg

| Label    | Value  |
|----------|--------|
| IR : max | 29,0°C |
| IR : min | 13,1°C |
| SP01     | 17,3°C |

3.1.2008

23:26:29



comments:

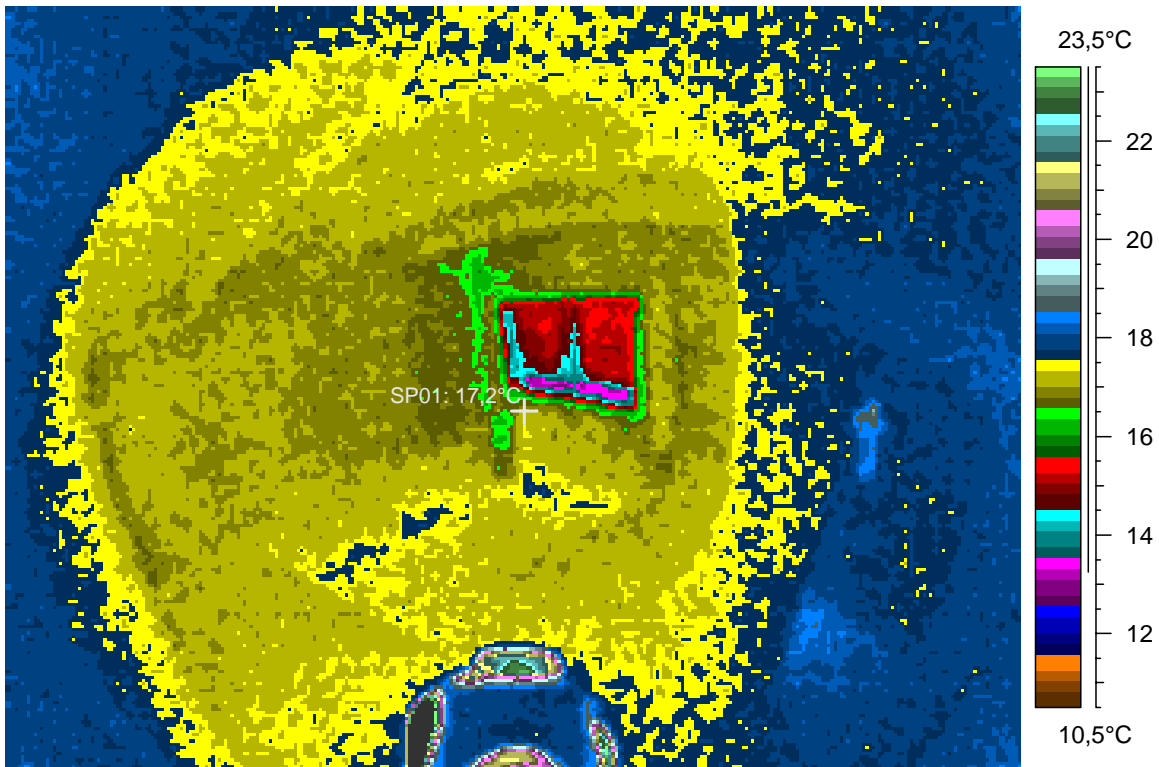
blabla

# 19 - Ir\_1340.jpg

| Label    | Value  |
|----------|--------|
| IR : max | 30,2°C |
| IR : min | 13,0°C |
| SP01     | 17,2°C |

3.1.2008

23:26:49



comments:

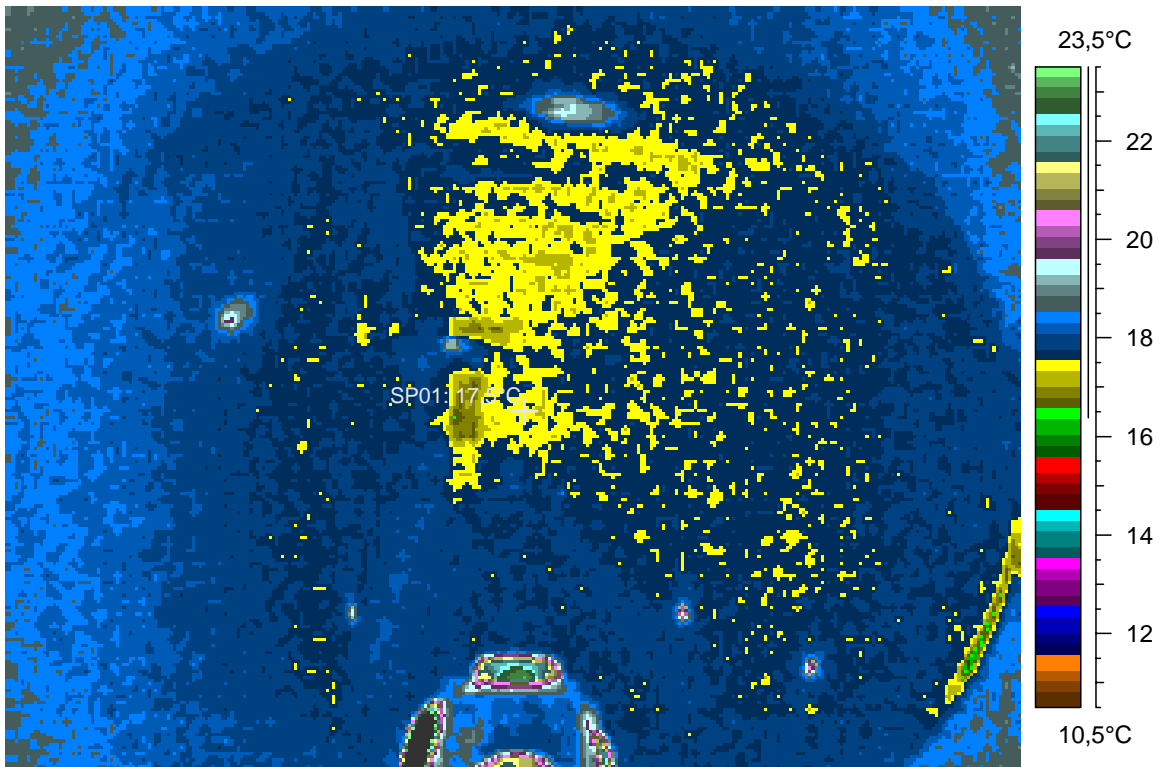
blabla

## 20 - Ir\_1341.jpg

| Label    | Value  |
|----------|--------|
| IR : max | 30,4°C |
| IR : min | 15,2°C |
| SP01     | 17,5°C |

3.1.2008

23:27:24



comments:

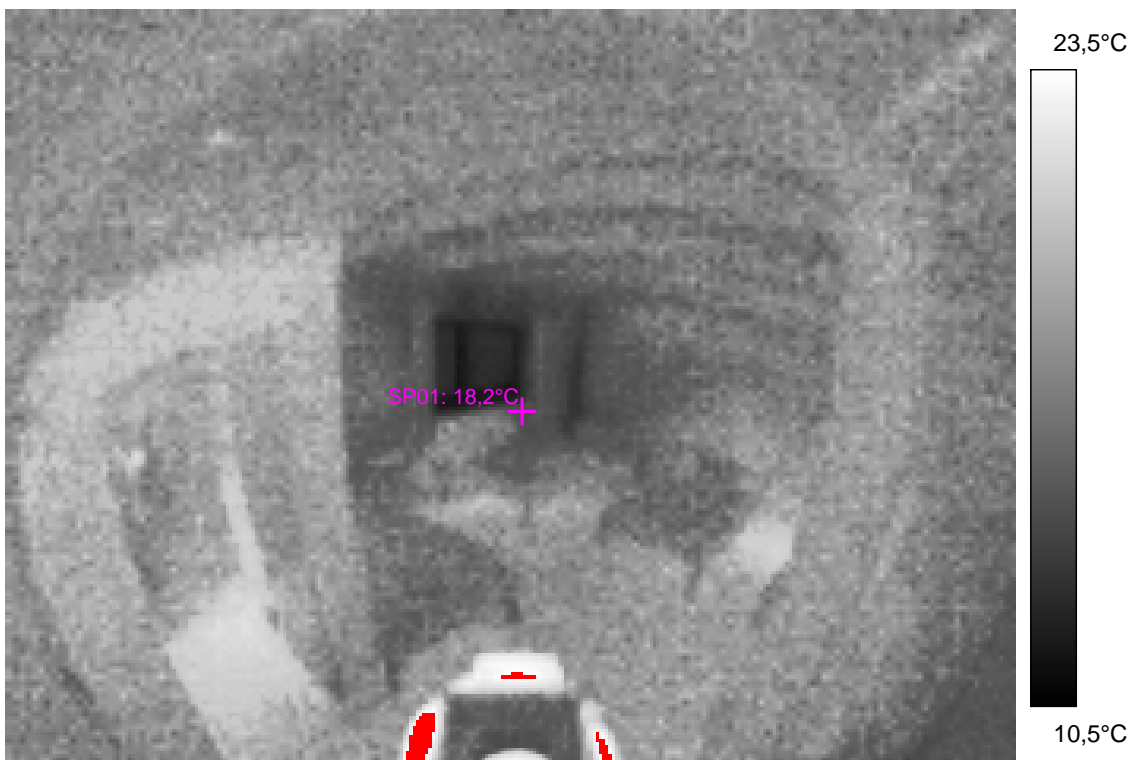
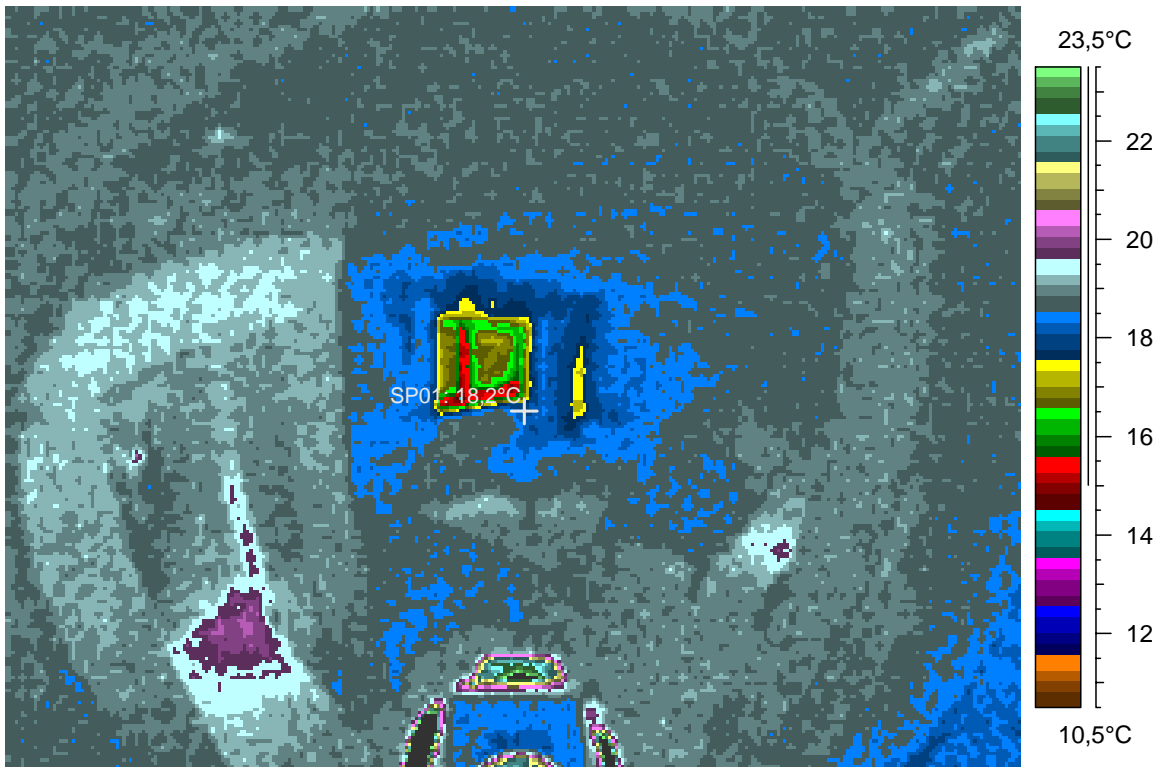
blabla

## 21 - Ir\_1342.jpg

| Label    | Value  |
|----------|--------|
| IR : max | 30,1°C |
| IR : min | 14,1°C |
| SP01     | 18,2°C |

3.1.2008

23:27:43



comments:

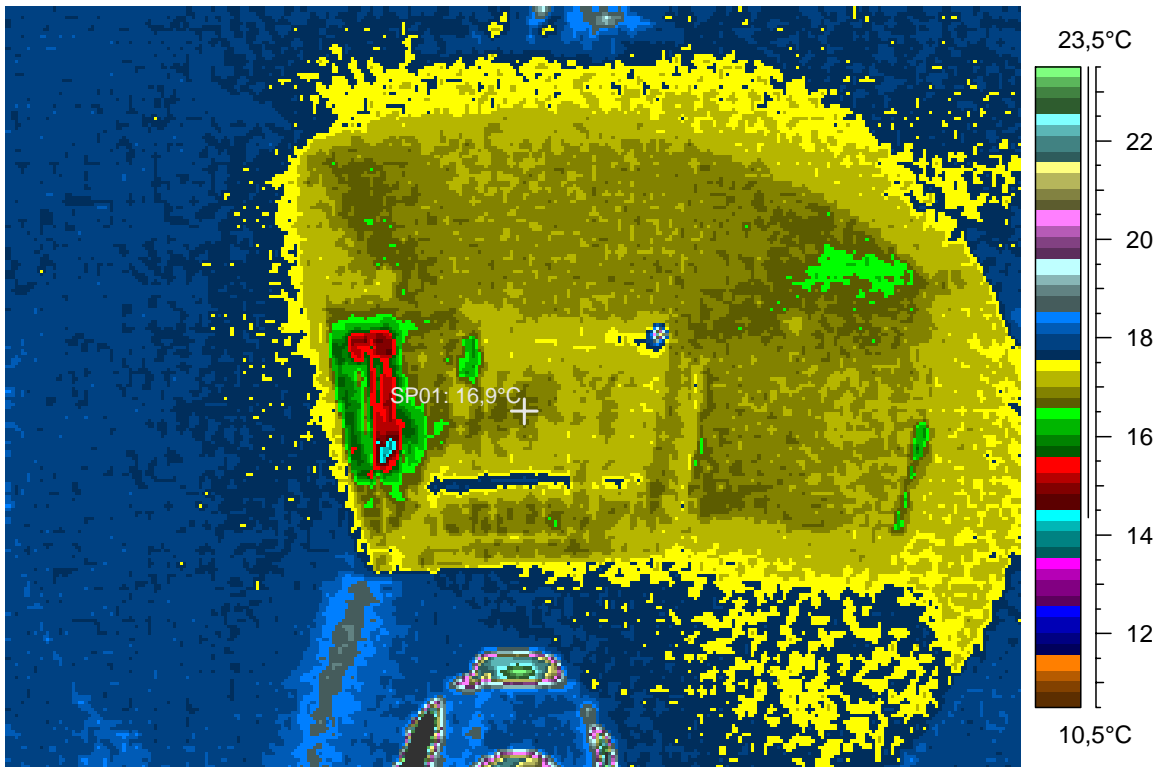
blabla

## 22 - Ir\_1343.jpg

| Label    | Value  |
|----------|--------|
| IR : max | 30,0°C |
| IR : min | 14,1°C |
| SP01     | 16,9°C |

3.1.2008

23:27:59



comments:

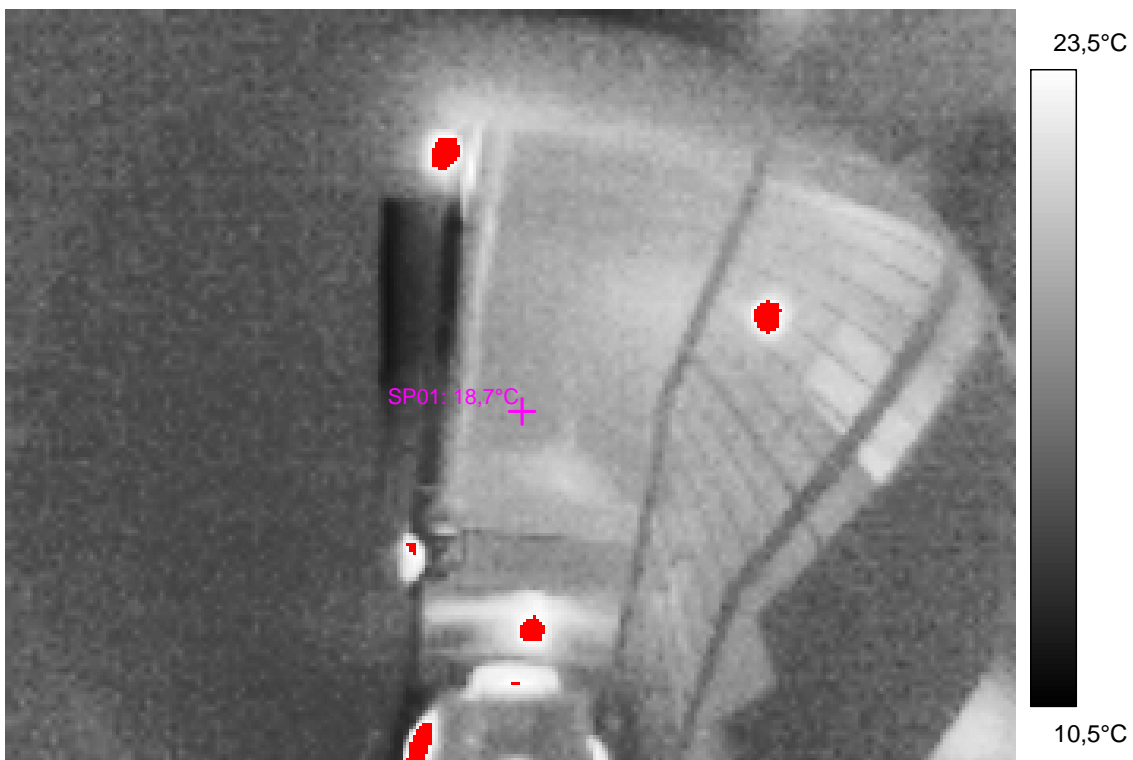
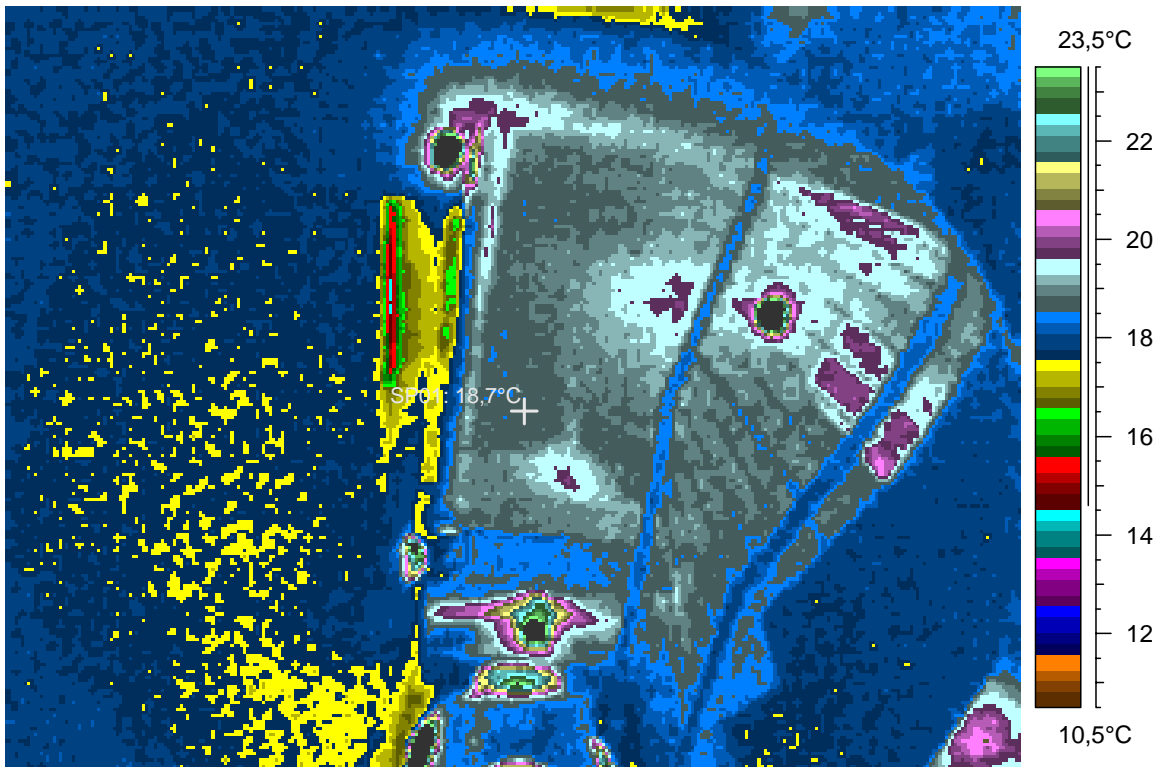
blabla

## 23 - Ir\_1344.jpg

| Label    | Value  |
|----------|--------|
| IR : max | 32,3°C |
| IR : min | 14,4°C |
| SP01     | 18,7°C |

3.1.2008

23:29:02



comments:

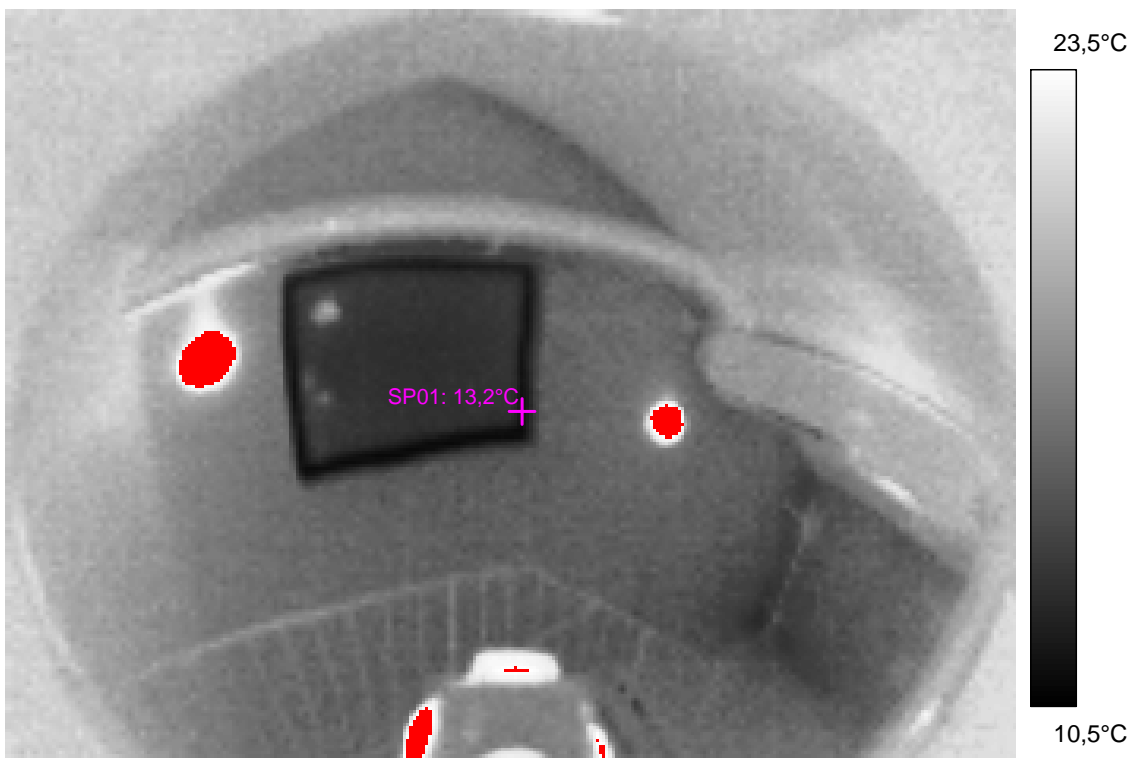
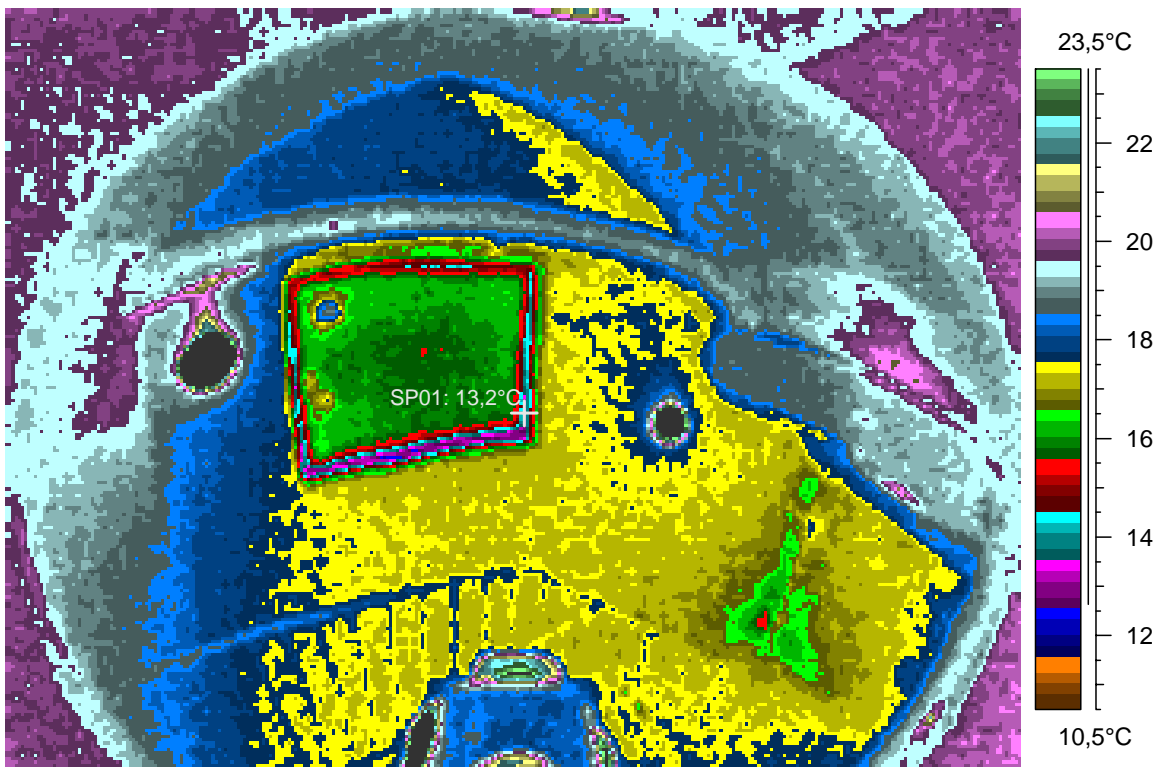
blabla

## 24 - Ir\_1345.jpg

| Label    | Value  |
|----------|--------|
| IR : max | 41,9°C |
| IR : min | 12,4°C |
| SP01     | 13,2°C |

3.1.2008

23:29:41





comments:

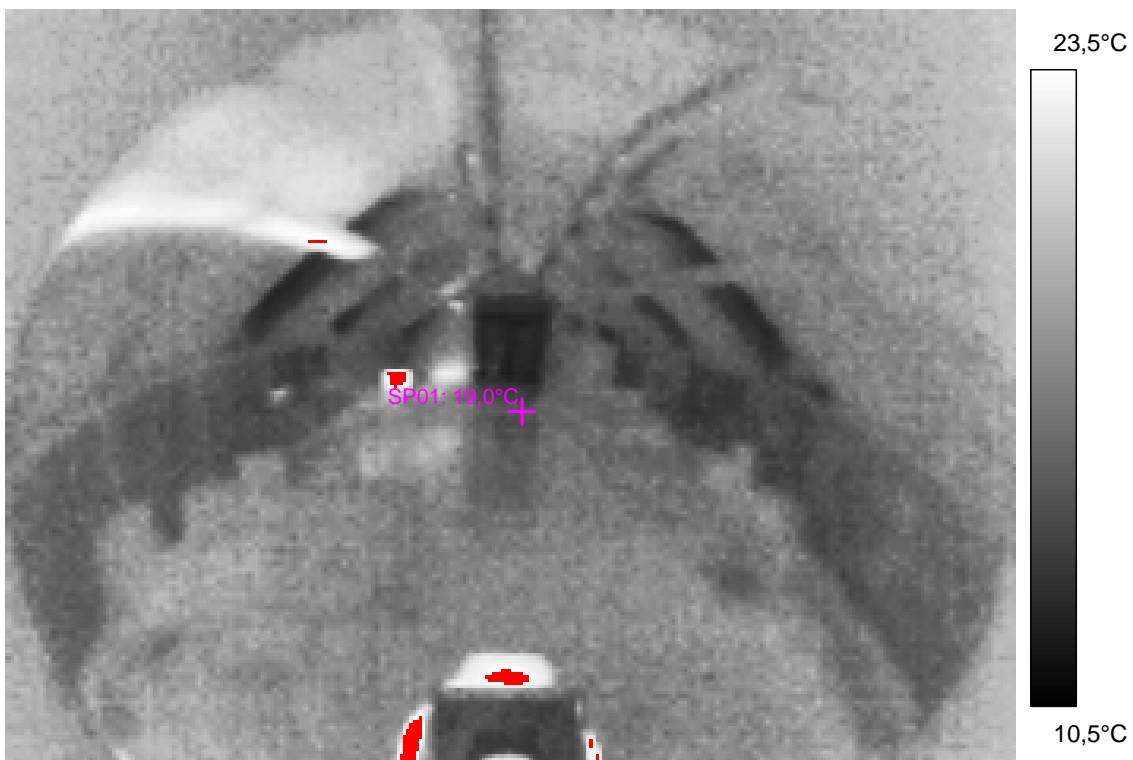
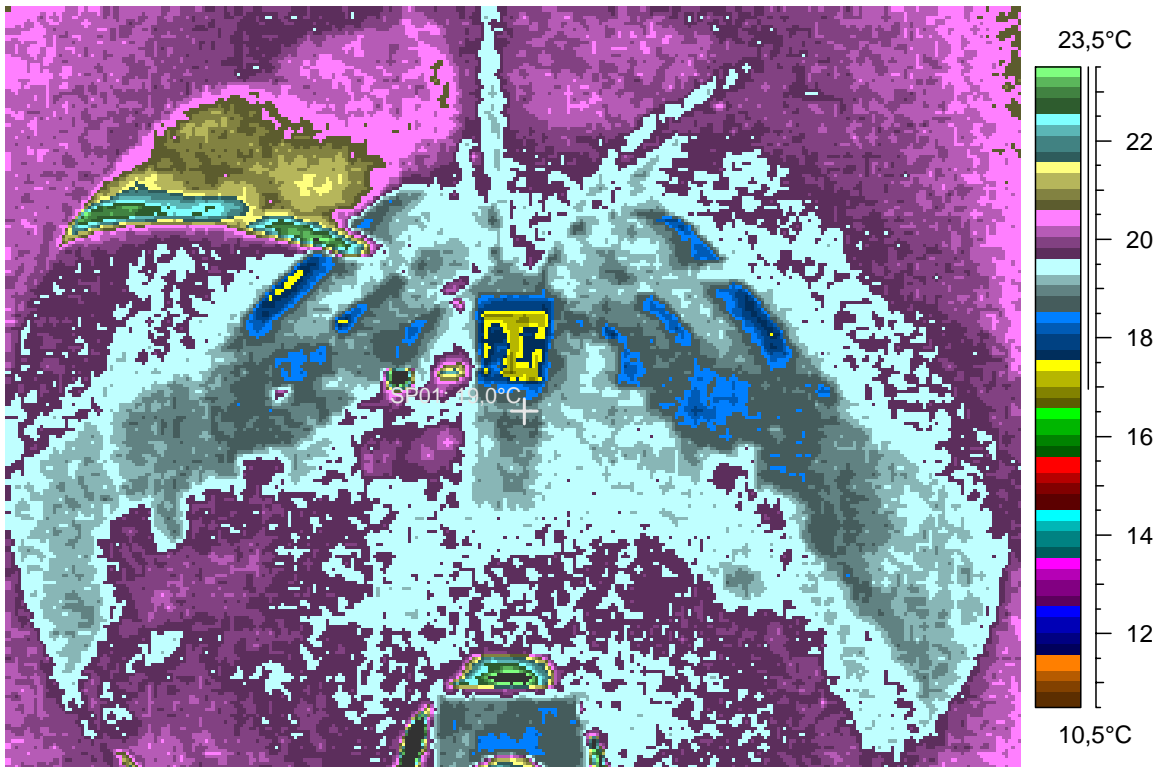
blabla

## 25 - Ir\_1346.jpg

| Label    | Value  |
|----------|--------|
| IR : max | 29,1°C |
| IR : min | 16,8°C |
| SP01     | 19,0°C |

3.1.2008

23:30:11



comments:

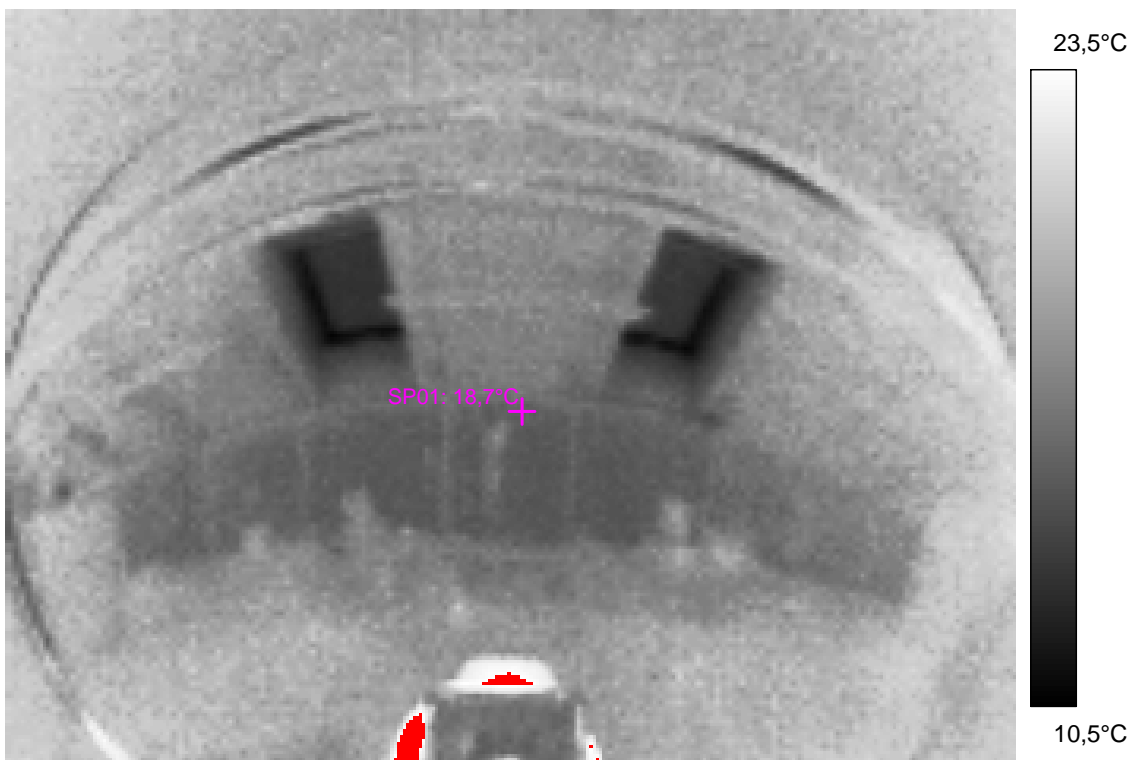
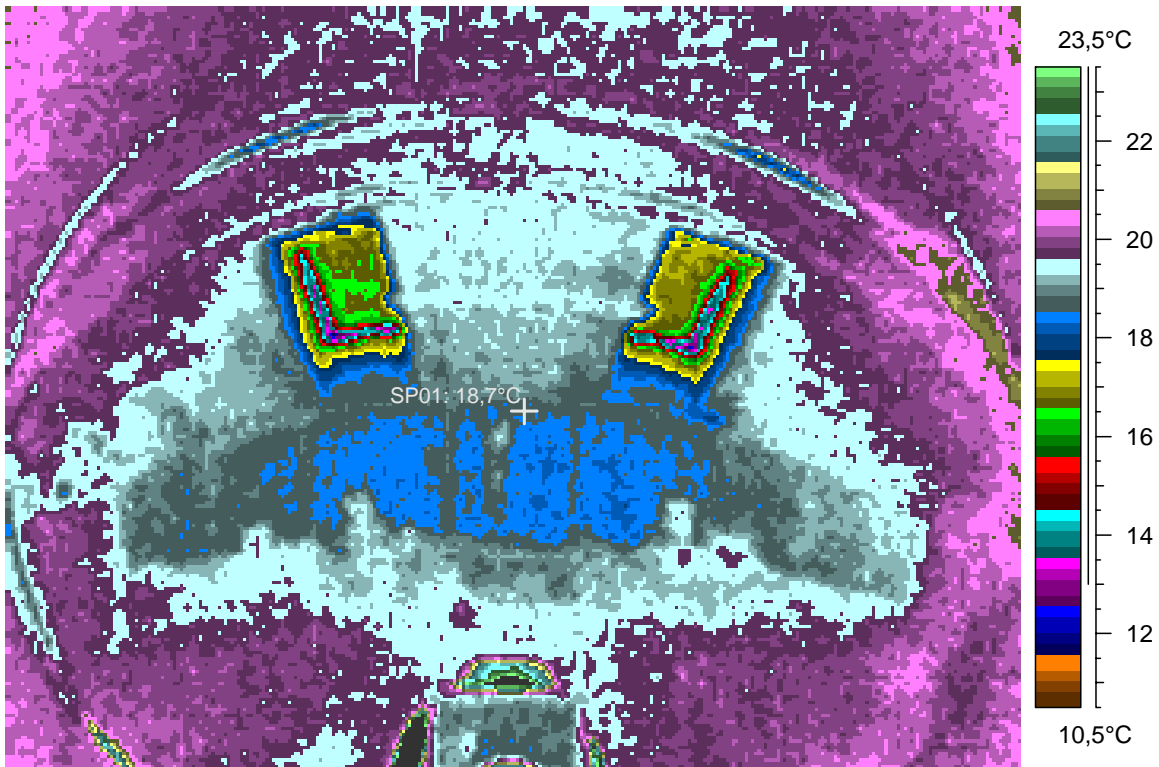
blabla

## 26 - Ir\_1347.jpg

| Label    | Value  |
|----------|--------|
| IR : max | 30,3°C |
| IR : min | 11,7°C |
| SP01     | 18,7°C |

3.1.2008

23:30:33



comments:

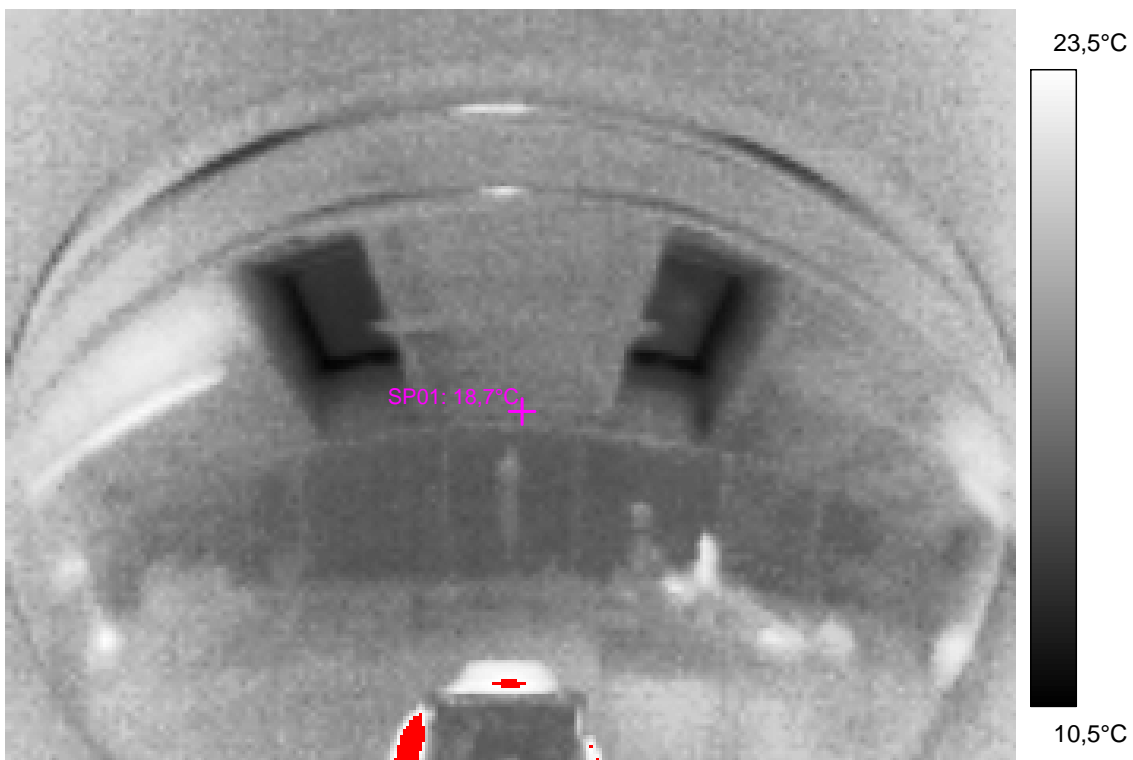
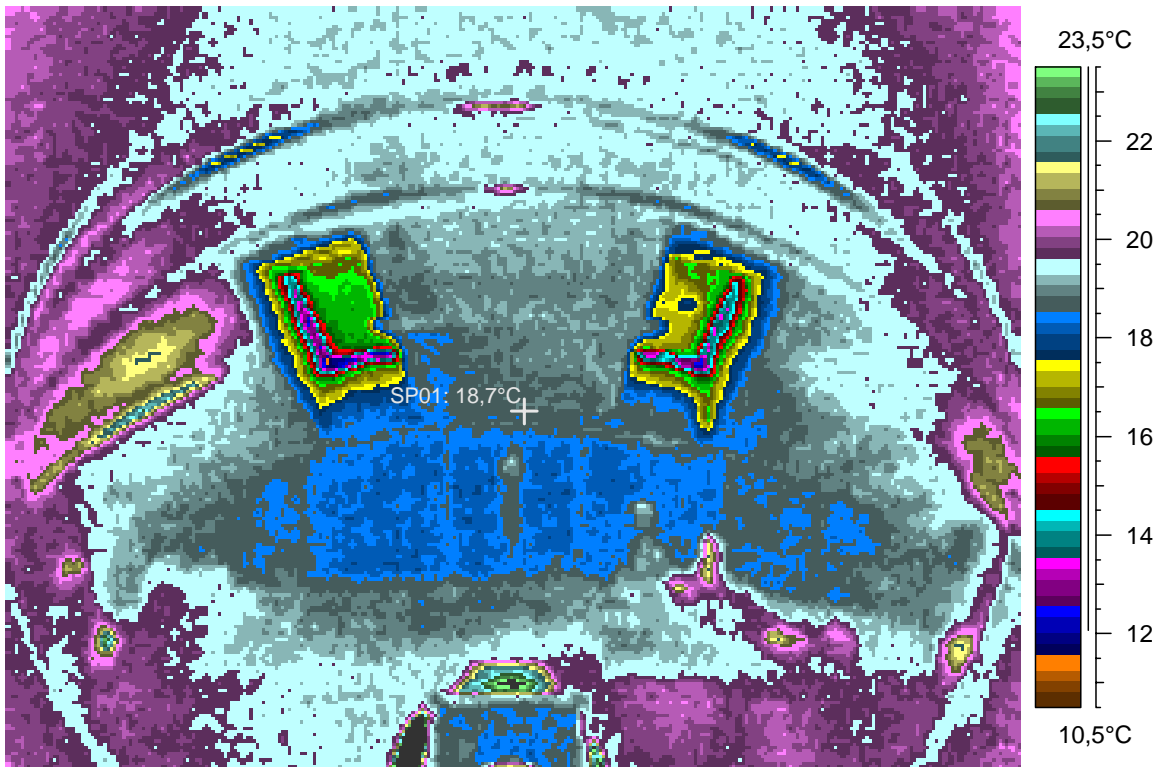
blabla

## 27 - Ir\_1348.jpg

| Label    | Value  |
|----------|--------|
| IR : max | 30,2°C |
| IR : min | 11,3°C |
| SP01     | 18,7°C |

3.1.2008

23:30:42



comments:

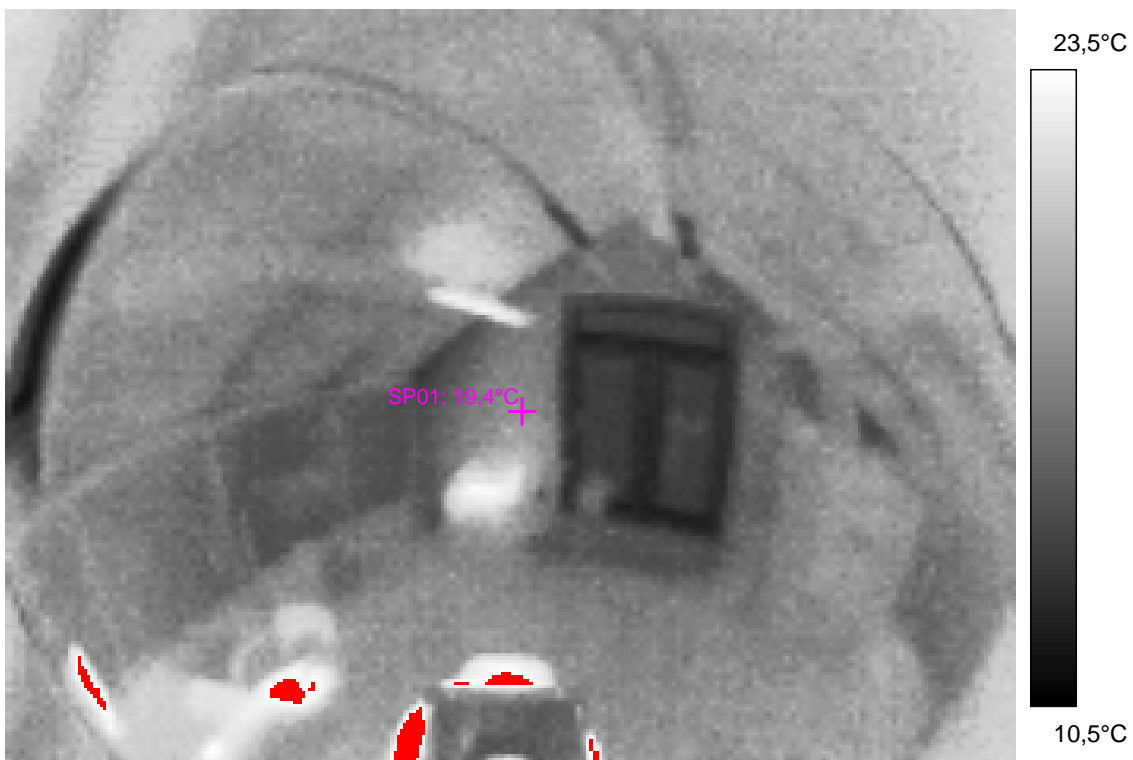
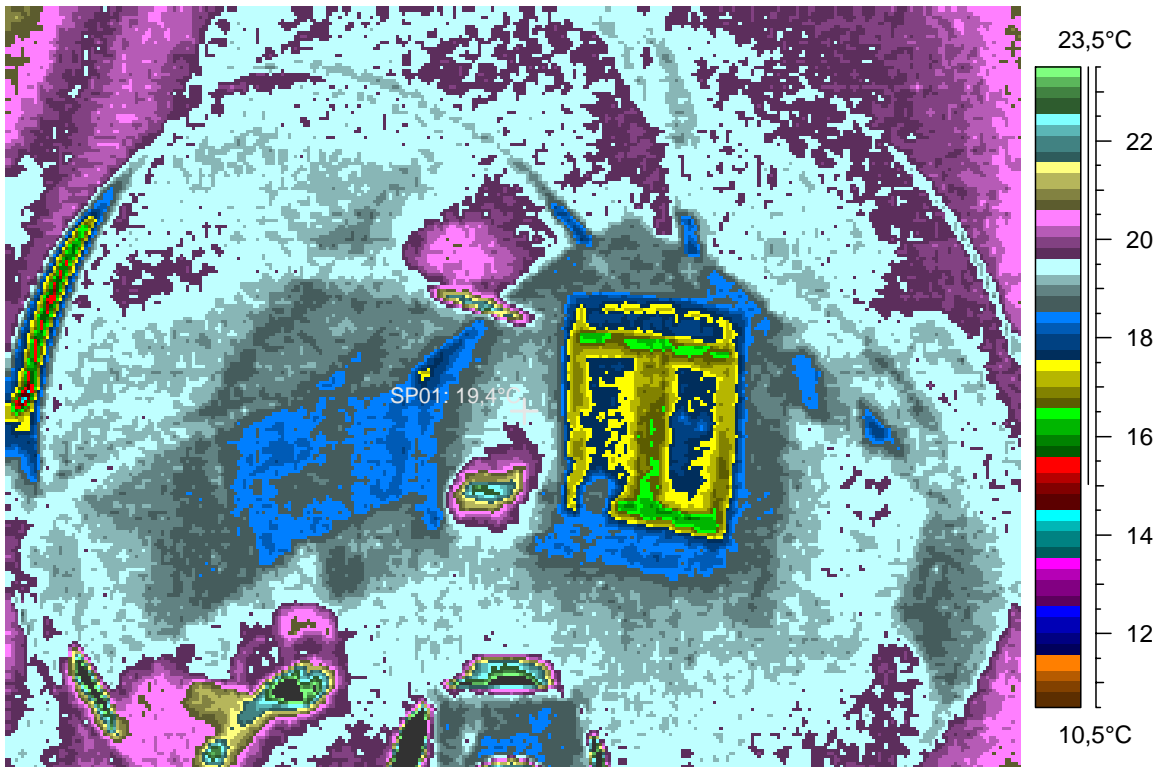
blabla

## 28 - Ir\_1349.jpg

| Label    | Value  |
|----------|--------|
| IR : max | 30,3°C |
| IR : min | 14,2°C |
| SP01     | 19,4°C |

3.1.2008

23:30:54



comments:

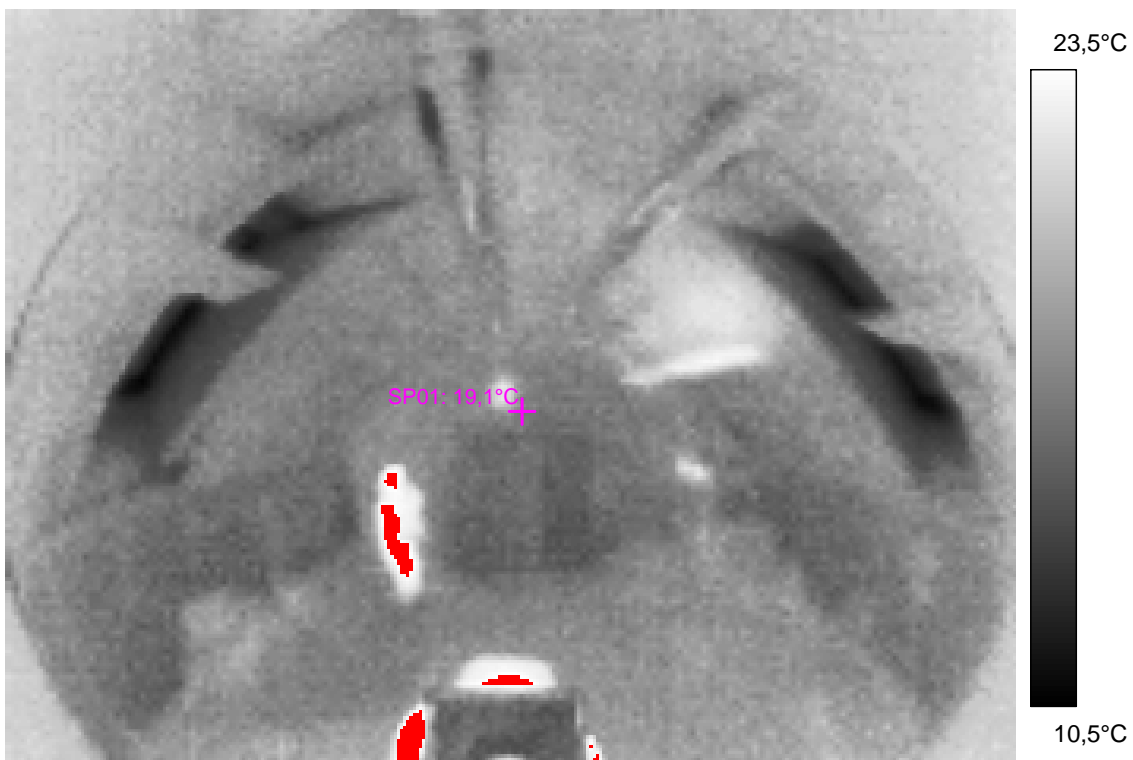
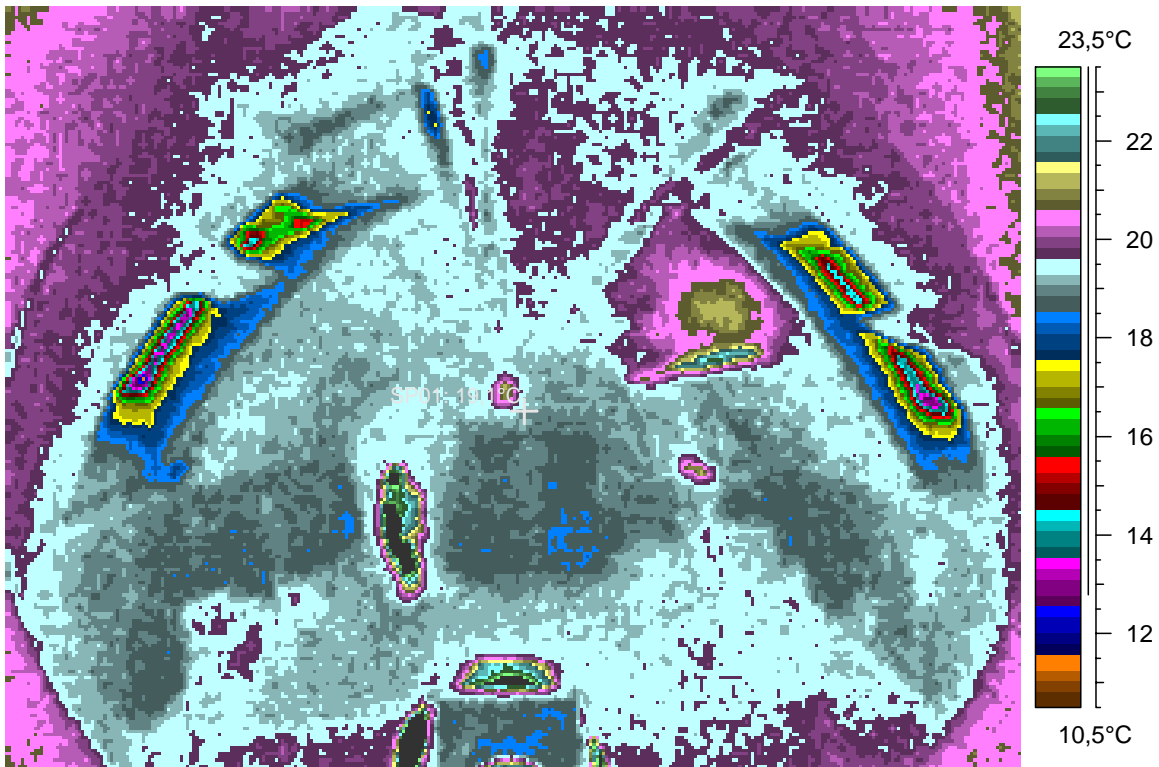
blabla

## 29 - Ir\_1350.jpg

| Label    | Value  |
|----------|--------|
| IR : max | 30,2°C |
| IR : min | 11,6°C |
| SP01     | 19,1°C |

3.1.2008

23:31:07



comments:

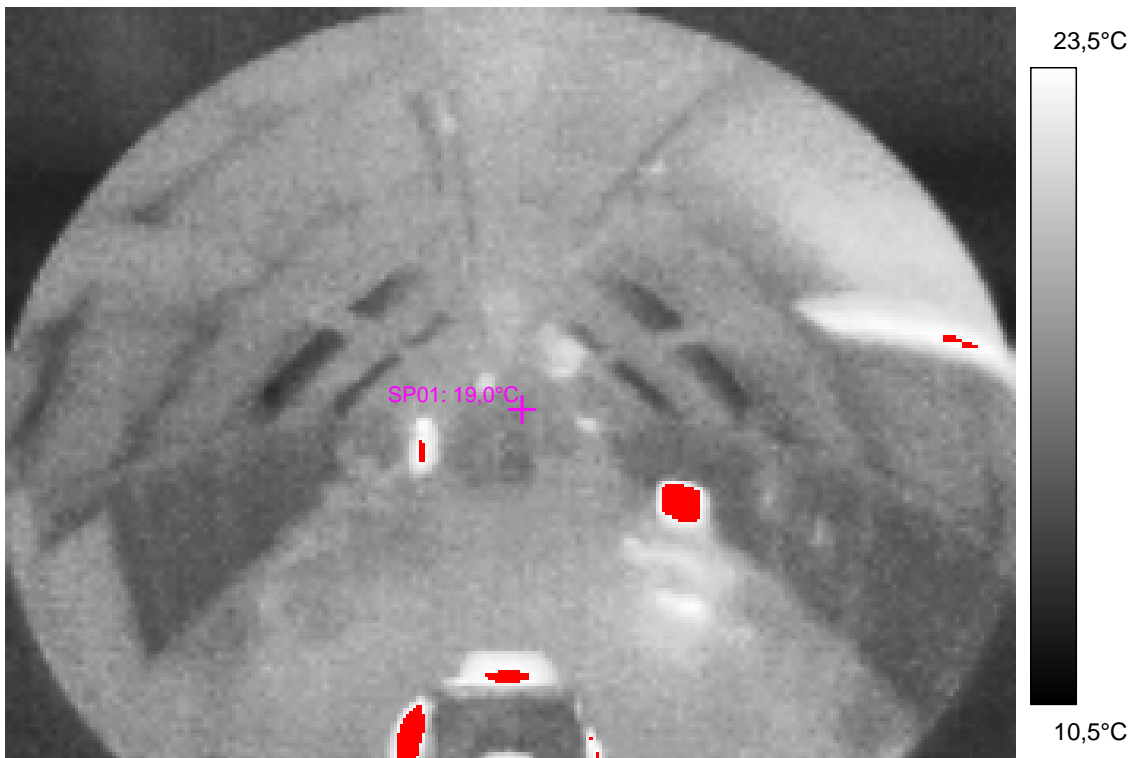
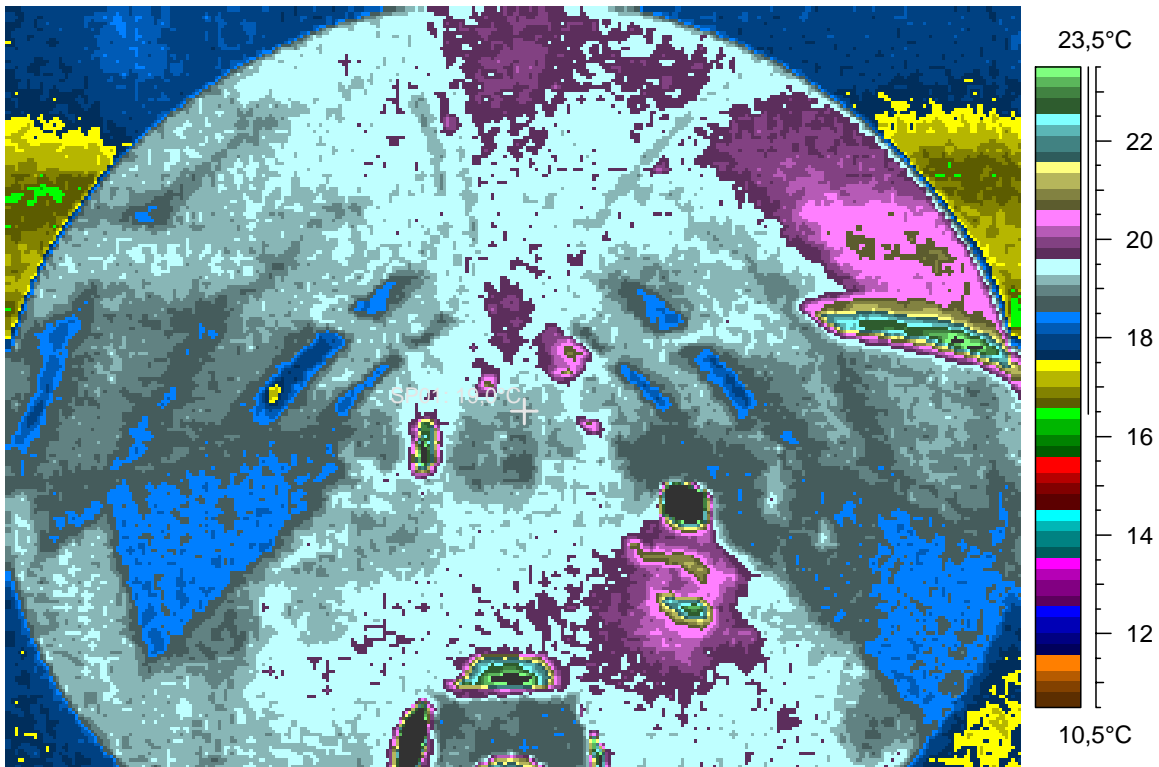
blabla

### 30 - Ir\_1351.jpg

| Label    | Value  |
|----------|--------|
| IR : max | 30,1°C |
| IR : min | 16,4°C |
| SP01     | 19,0°C |

3.1.2008

23:31:32



comments:

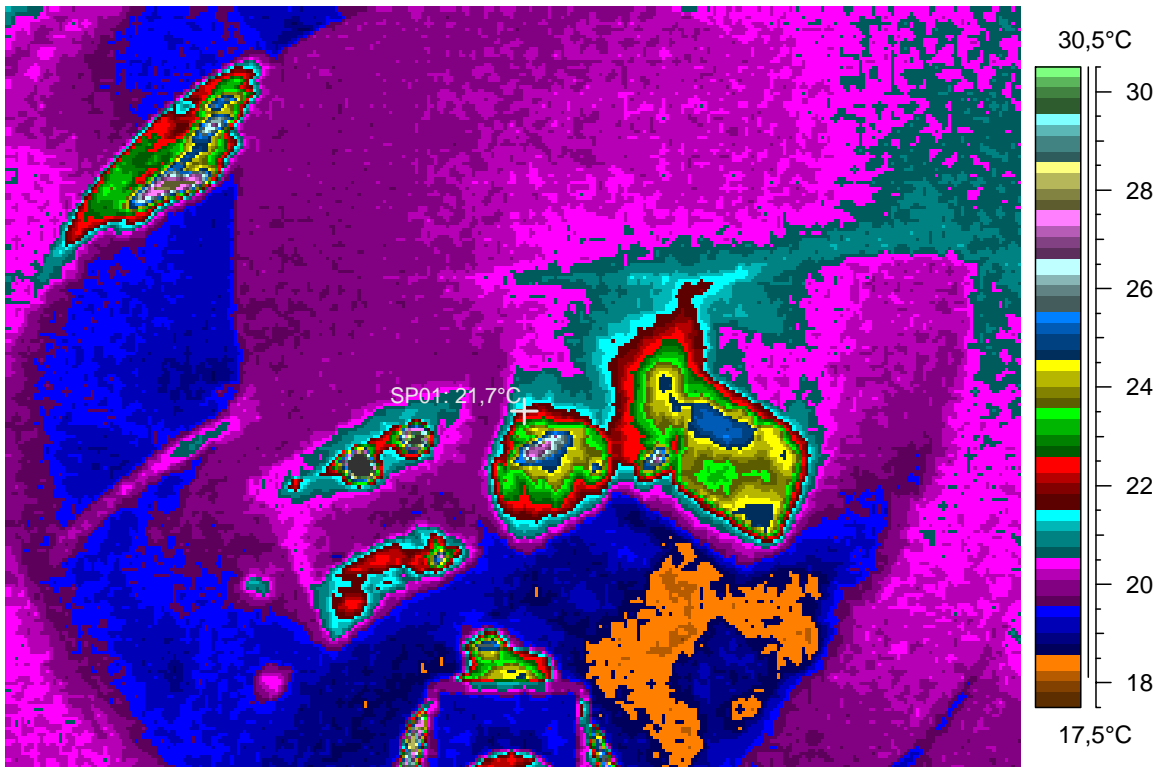
blabla

### 31 - Ir\_1352.jpg

| Label    | Value  |
|----------|--------|
| IR : max | 44,7°C |
| IR : min | 18,0°C |
| SP01     | 21,7°C |

3.1.2008

23:31:56



comments:

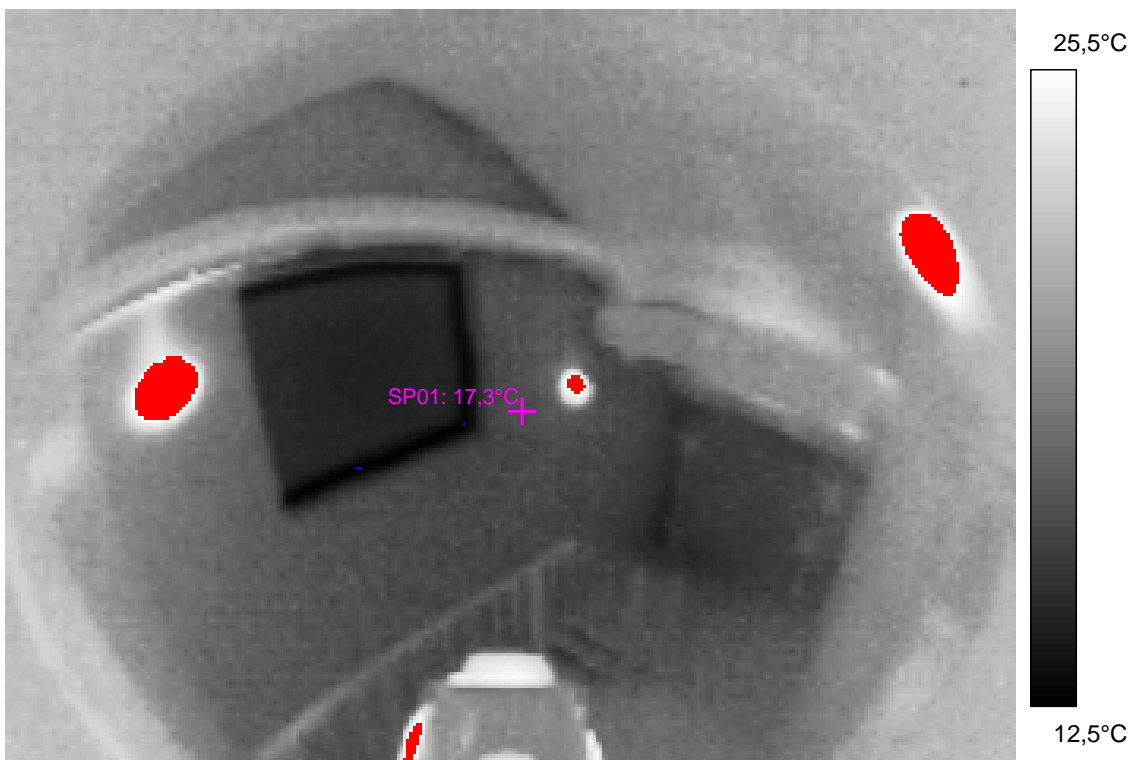
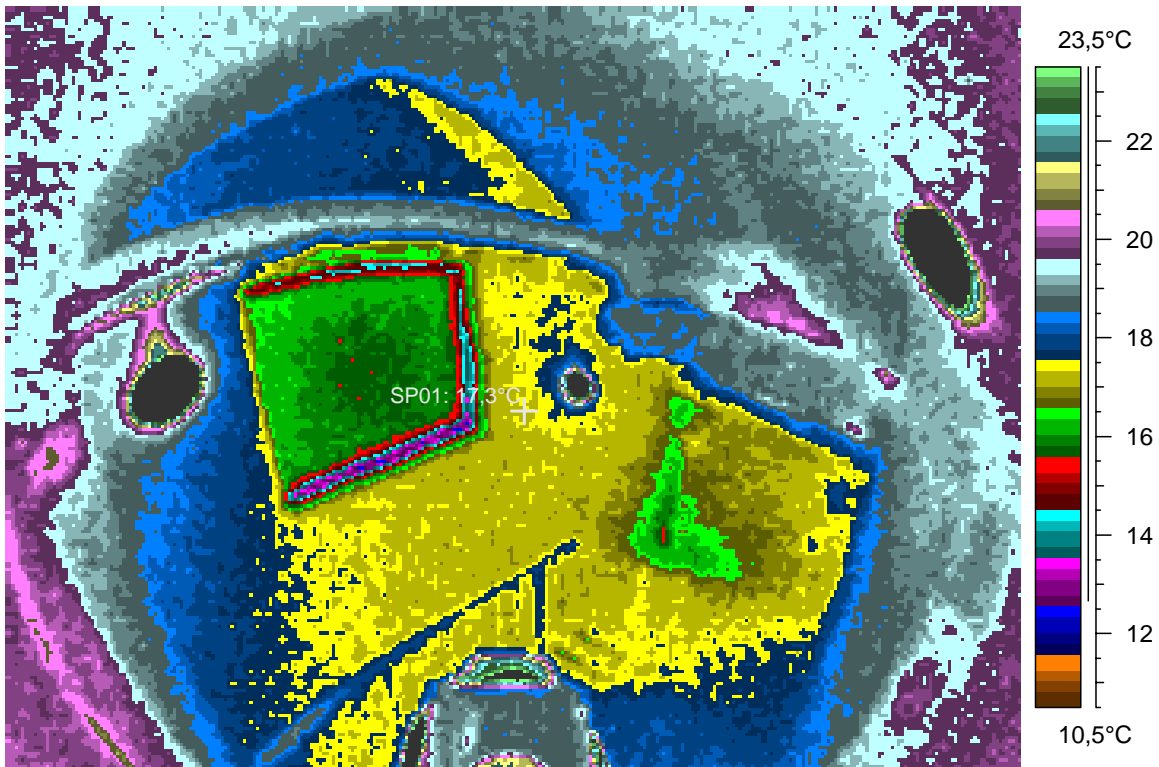
blabla

### 32 - Ir\_1353.jpg

| Label    | Value  |
|----------|--------|
| IR : max | 42,7°C |
| IR : min | 12,4°C |
| SP01     | 17,3°C |

3.1.2008

23:32:55





comments:

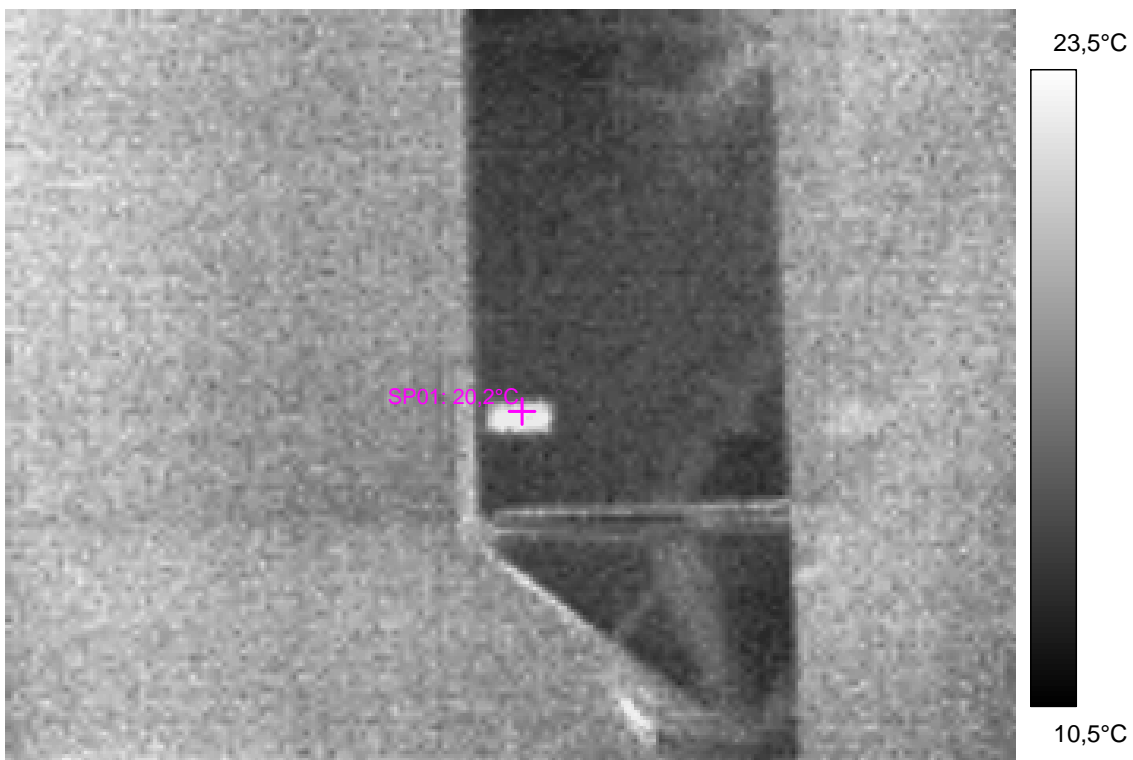
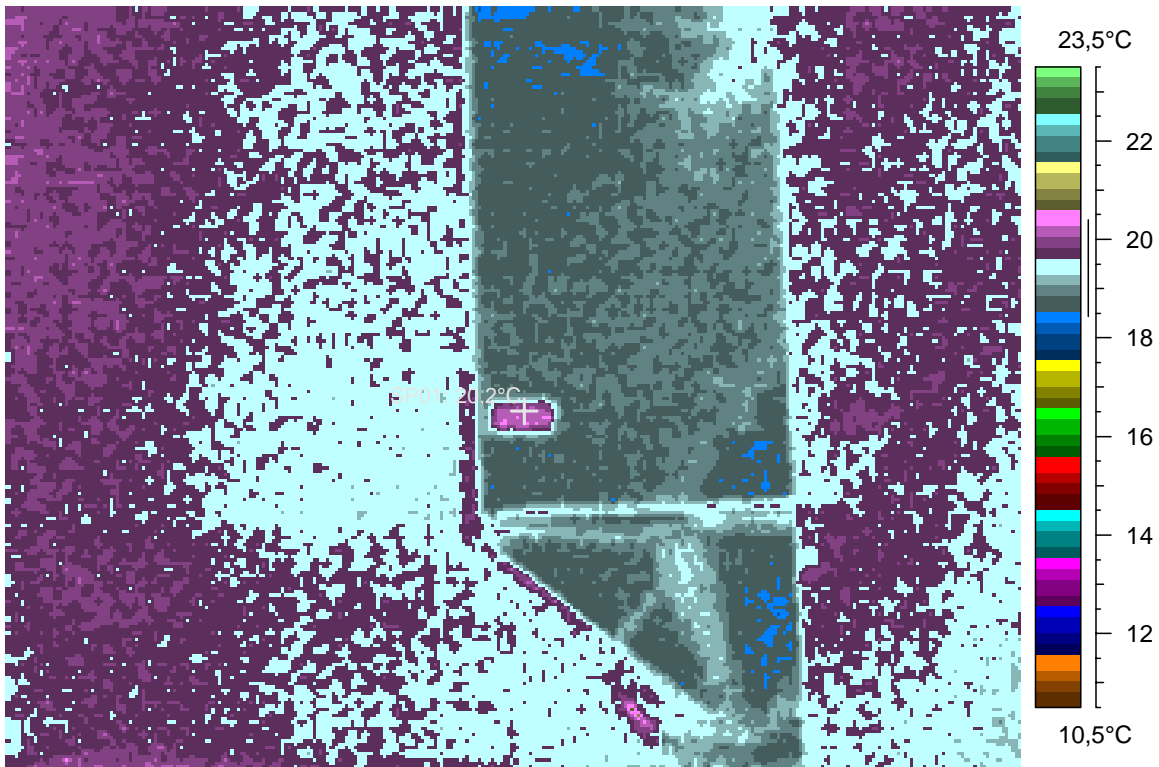
blabla

### 33 - Ir\_1354.jpg

| Label    | Value  |
|----------|--------|
| IR : max | 20,9°C |
| IR : min | 18,3°C |
| SP01     | 20,2°C |

3.1.2008

23:39:40



comments:

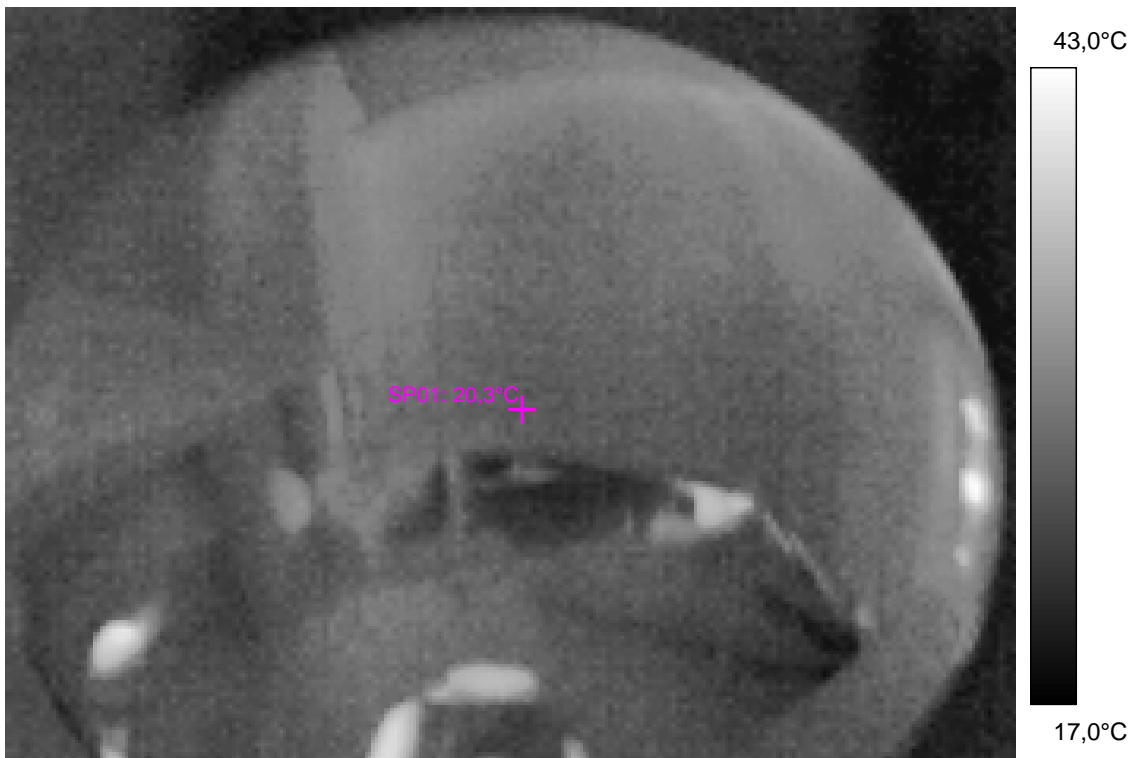
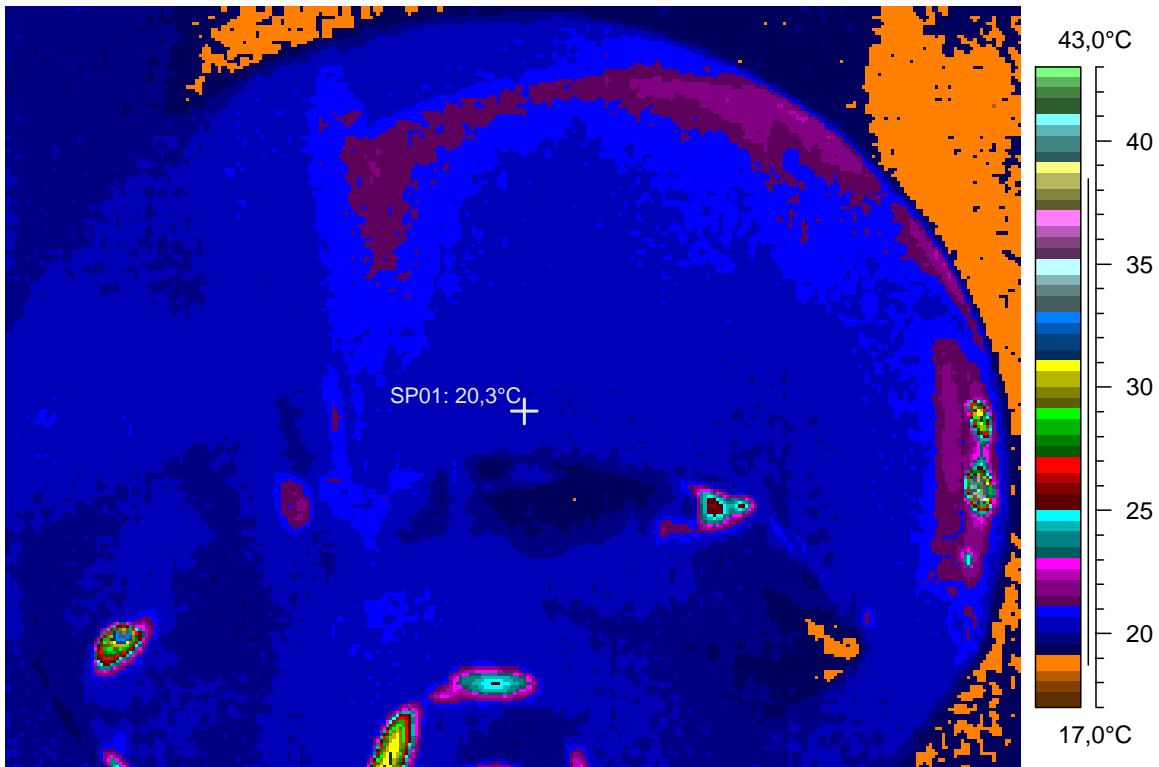
blabla

### 34 - Ir\_1355.jpg

| Label    | Value  |
|----------|--------|
| IR : max | 42,6°C |
| IR : min | 18,5°C |
| SP01     | 20,3°C |

3.1.2008

23:40:30



comments:

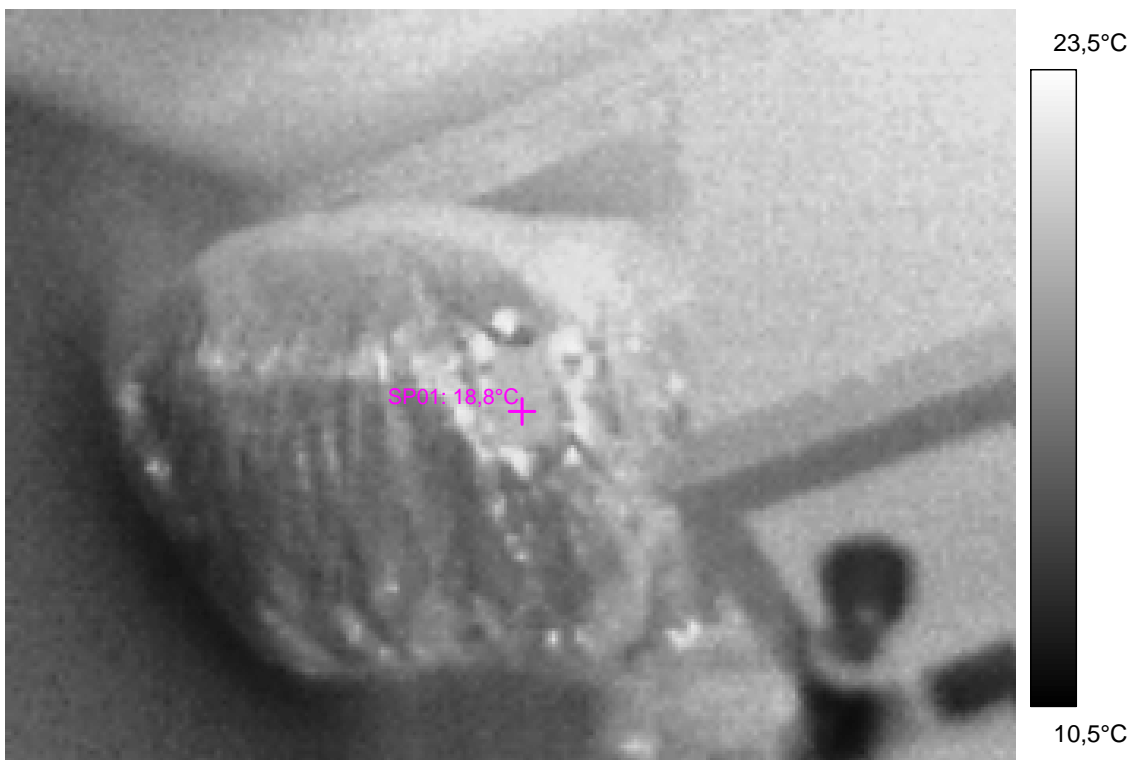
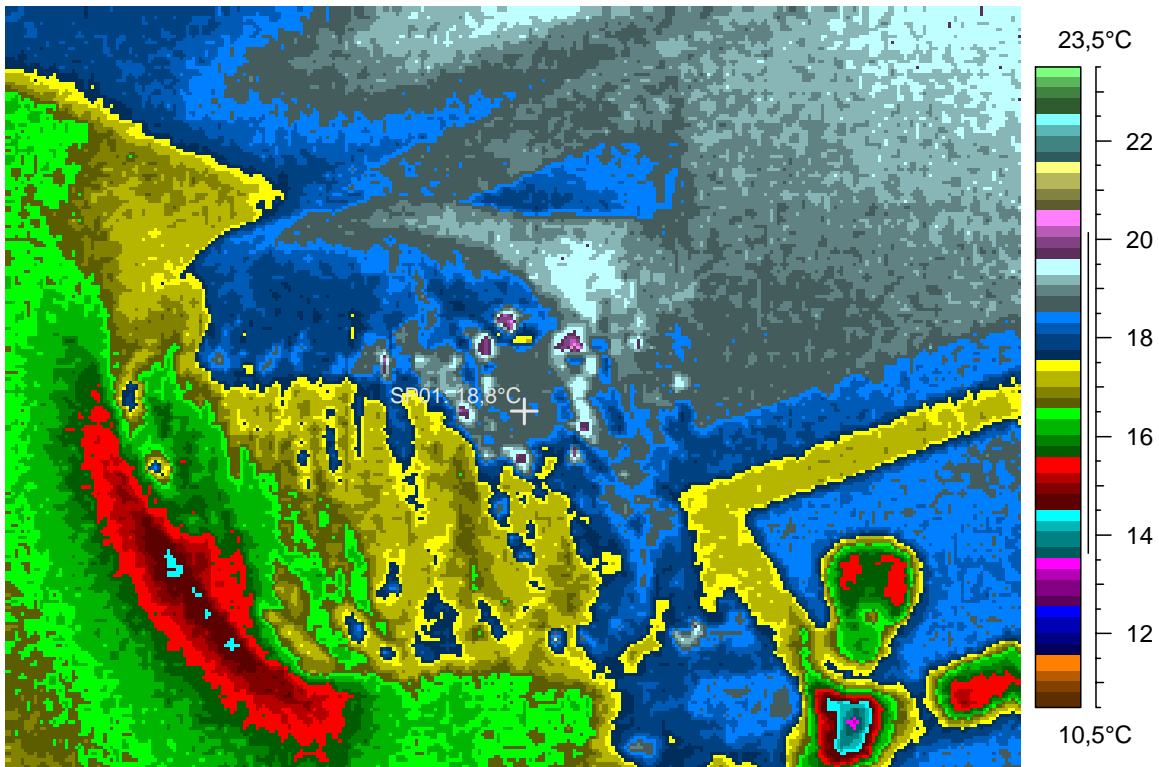
blabla

### 35 - Ir\_1356.jpg

| Label    | Value  |
|----------|--------|
| IR : max | 20,8°C |
| IR : min | 13,3°C |
| SP01     | 18,8°C |

3.1.2008

23:41:05



comments:

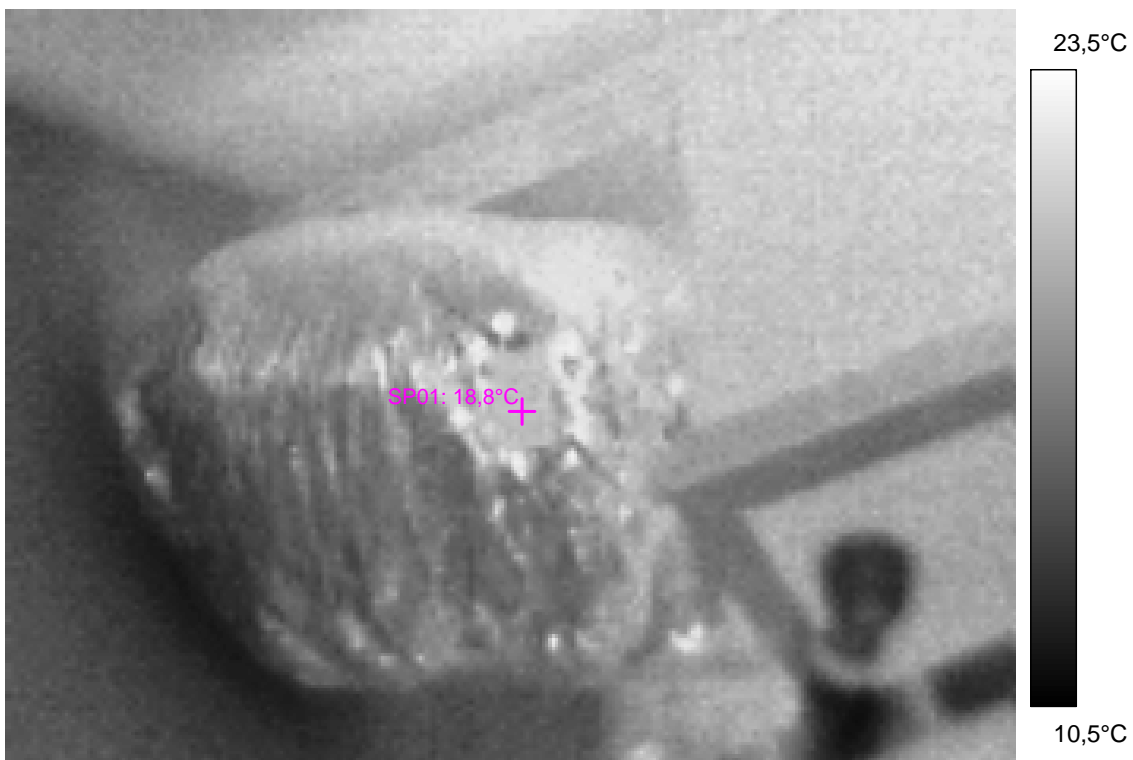
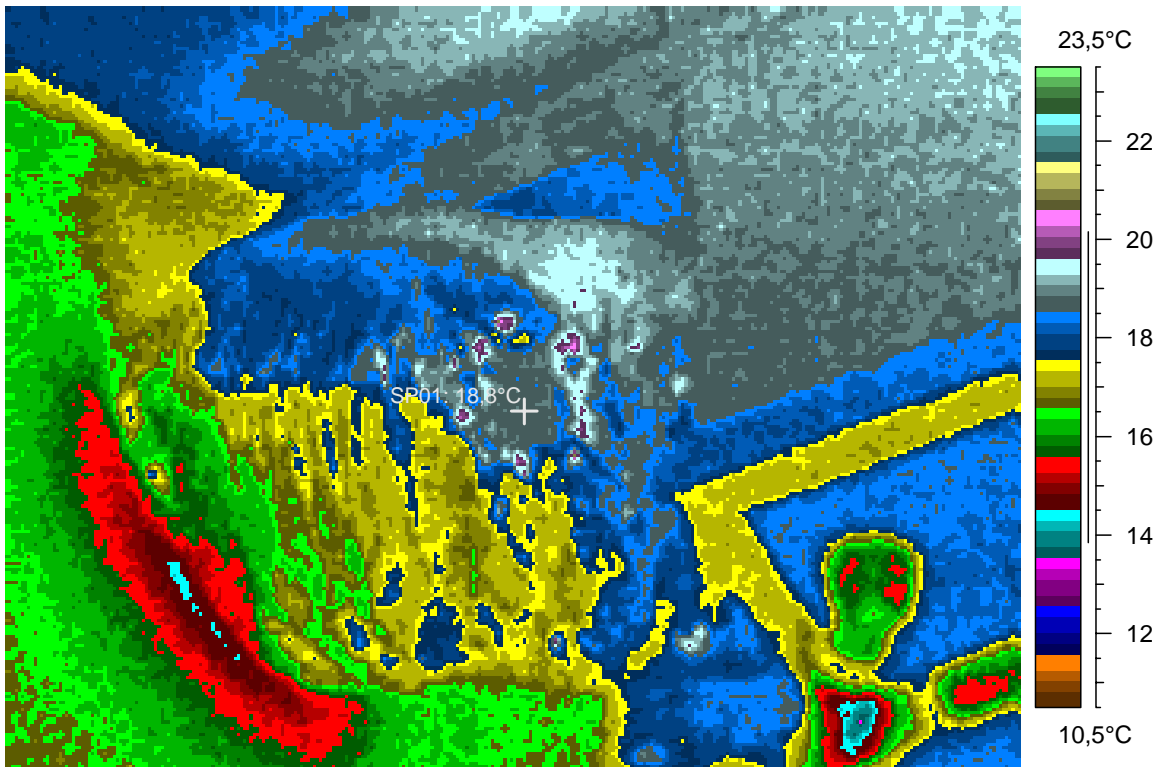
blabla

### 36 - Ir\_1357.jpg

| Label    | Value  |
|----------|--------|
| IR : max | 20,9°C |
| IR : min | 13,5°C |
| SP01     | 18,8°C |

3.1.2008

23:41:24



comments:

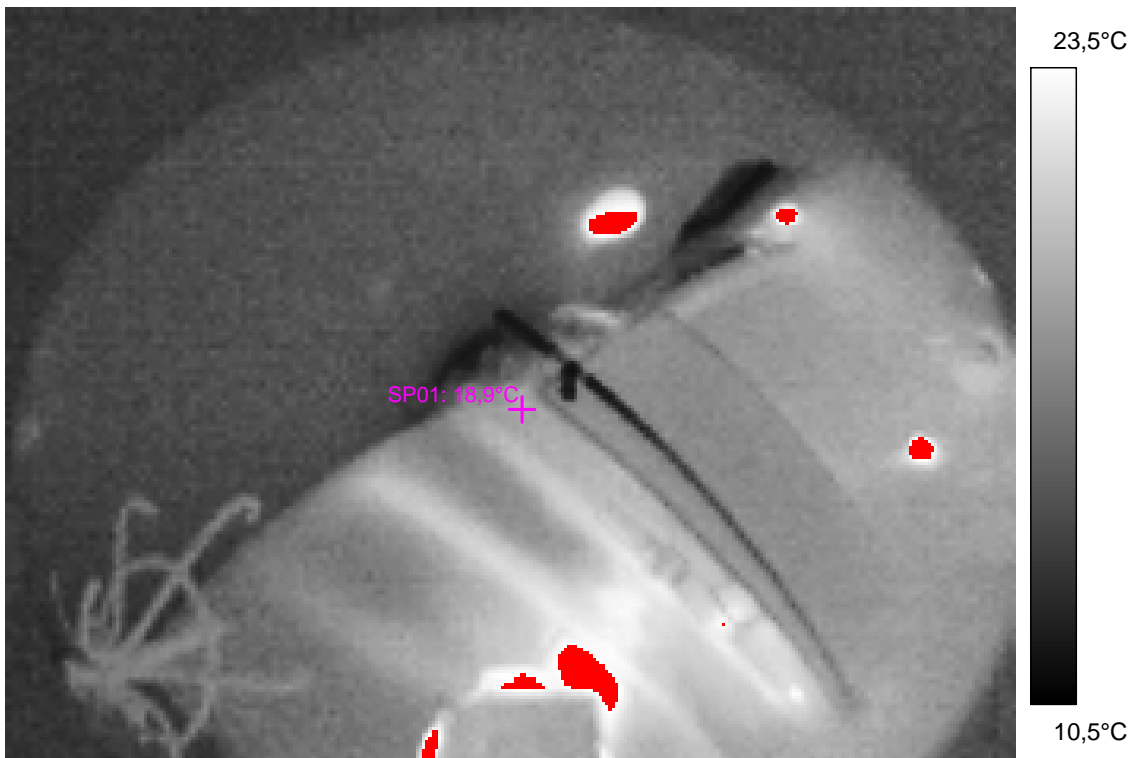
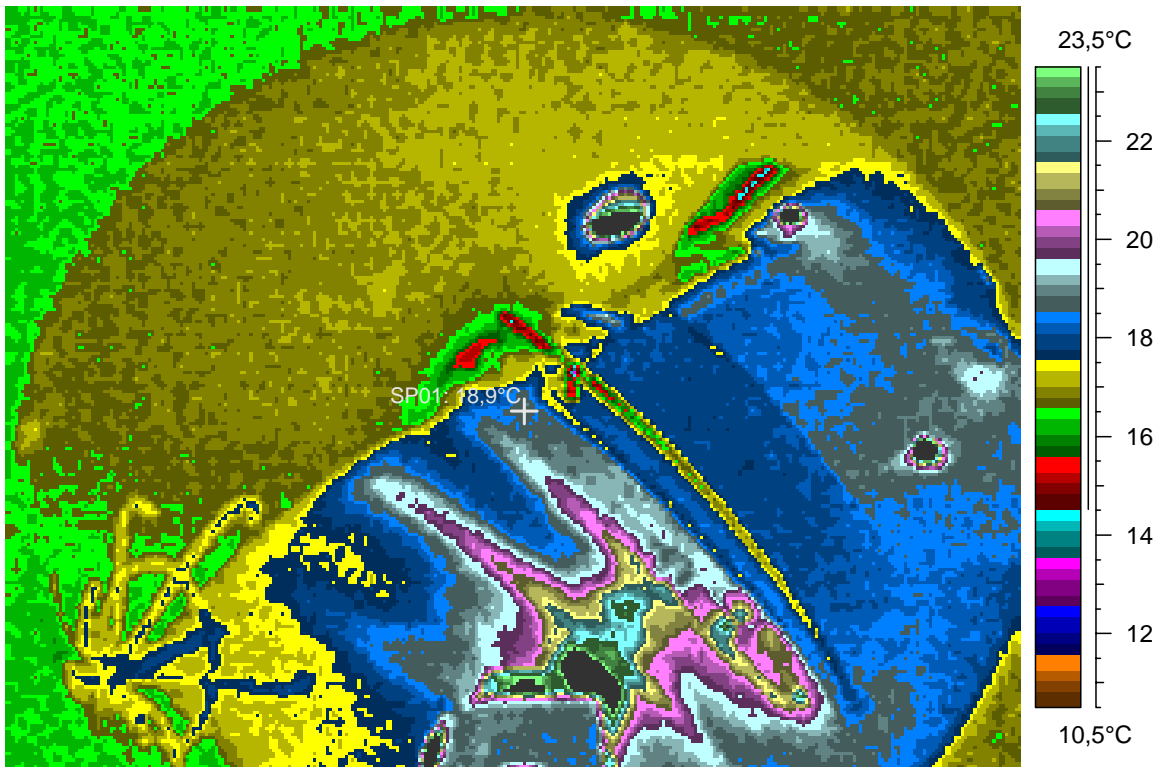
blabla

### 37 - Ir\_1358.jpg

| Label    | Value  |
|----------|--------|
| IR : max | 30,8°C |
| IR : min | 13,4°C |
| SP01     | 18,9°C |

3.1.2008

23:41:56



comments:

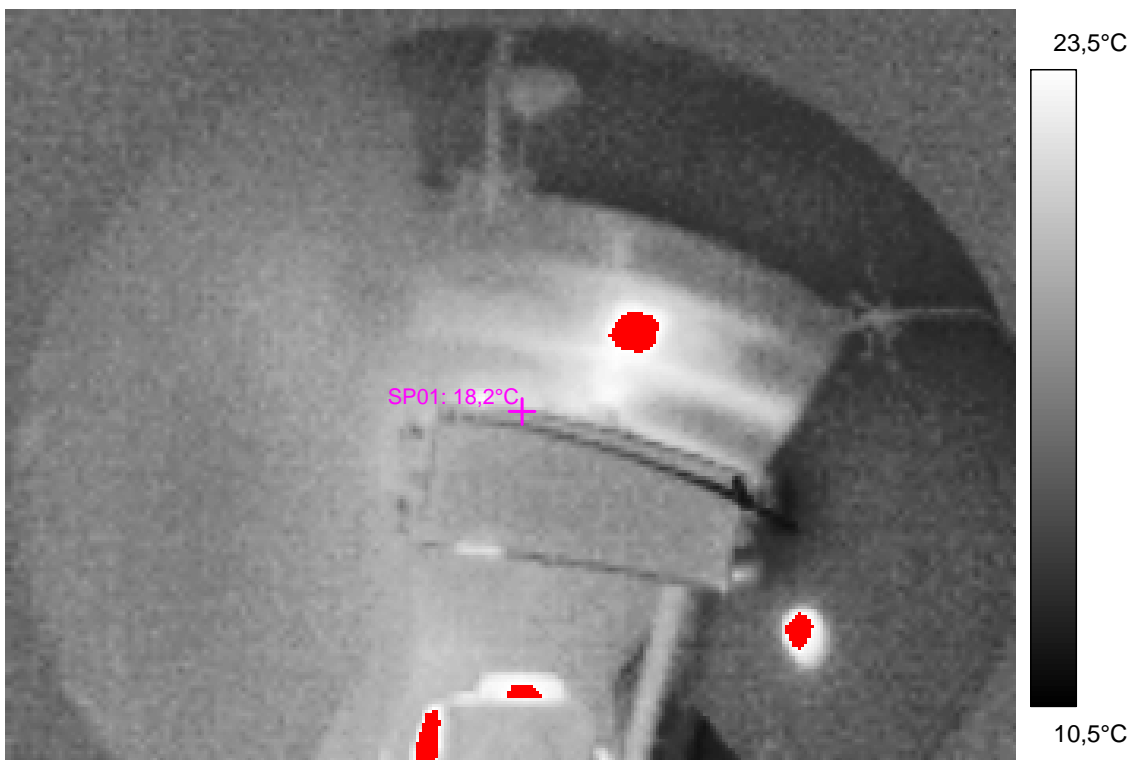
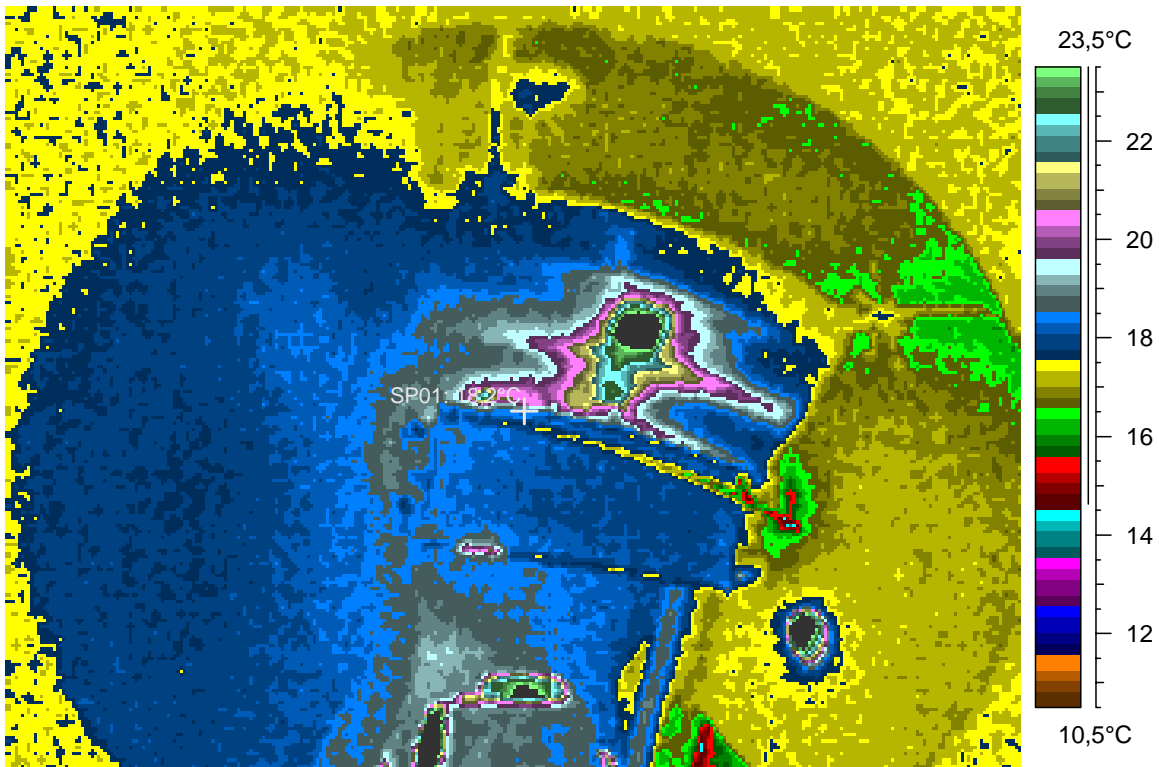
blabla

### 38 - Ir\_1359.jpg

| Label    | Value  |
|----------|--------|
| IR : max | 30,5°C |
| IR : min | 14,1°C |
| SP01     | 18,2°C |

3.1.2008

23:42:08



comments:

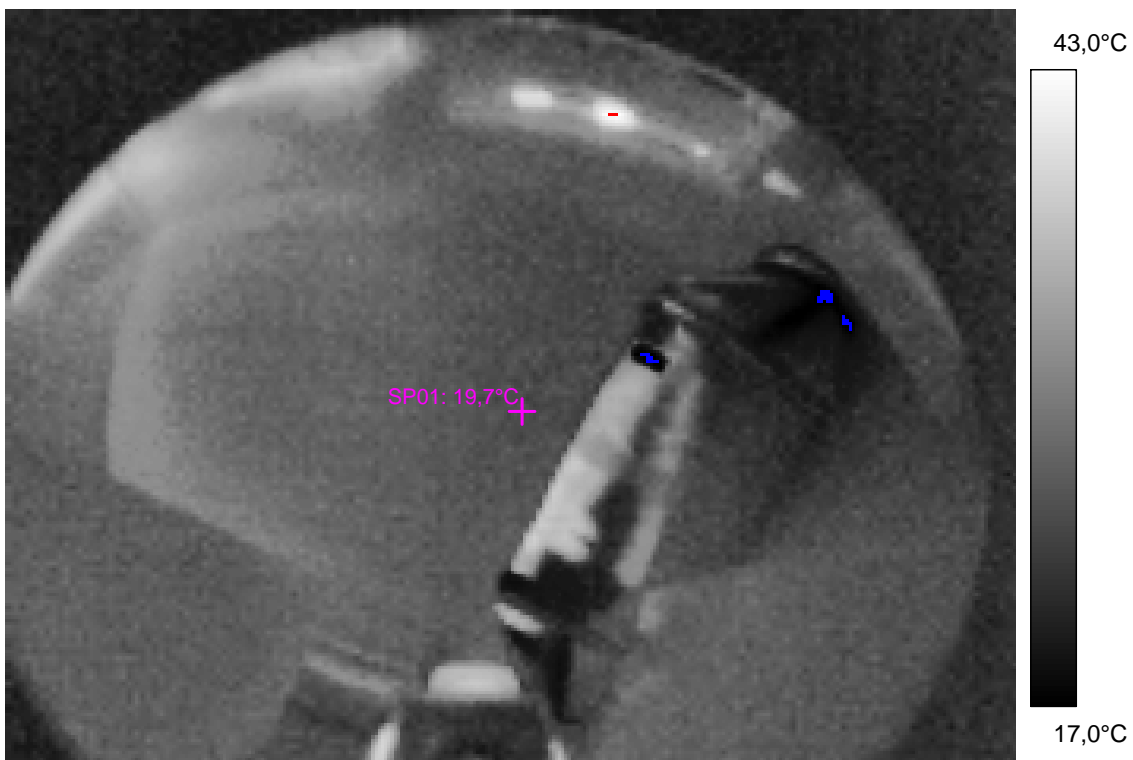
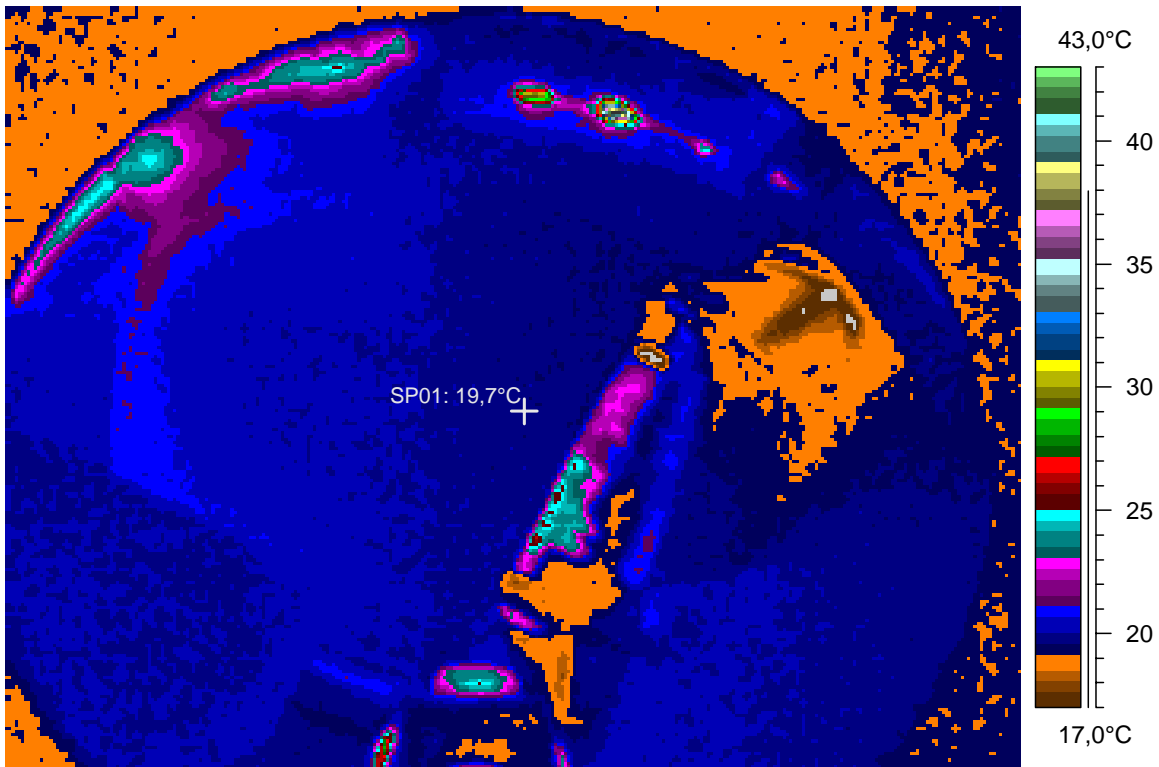
blabla

### 39 - Ir\_1360.jpg

| Label    | Value  |
|----------|--------|
| IR : max | 43,8°C |
| IR : min | 16,6°C |
| SP01     | 19,7°C |

3.1.2008

23:42:35



comments:

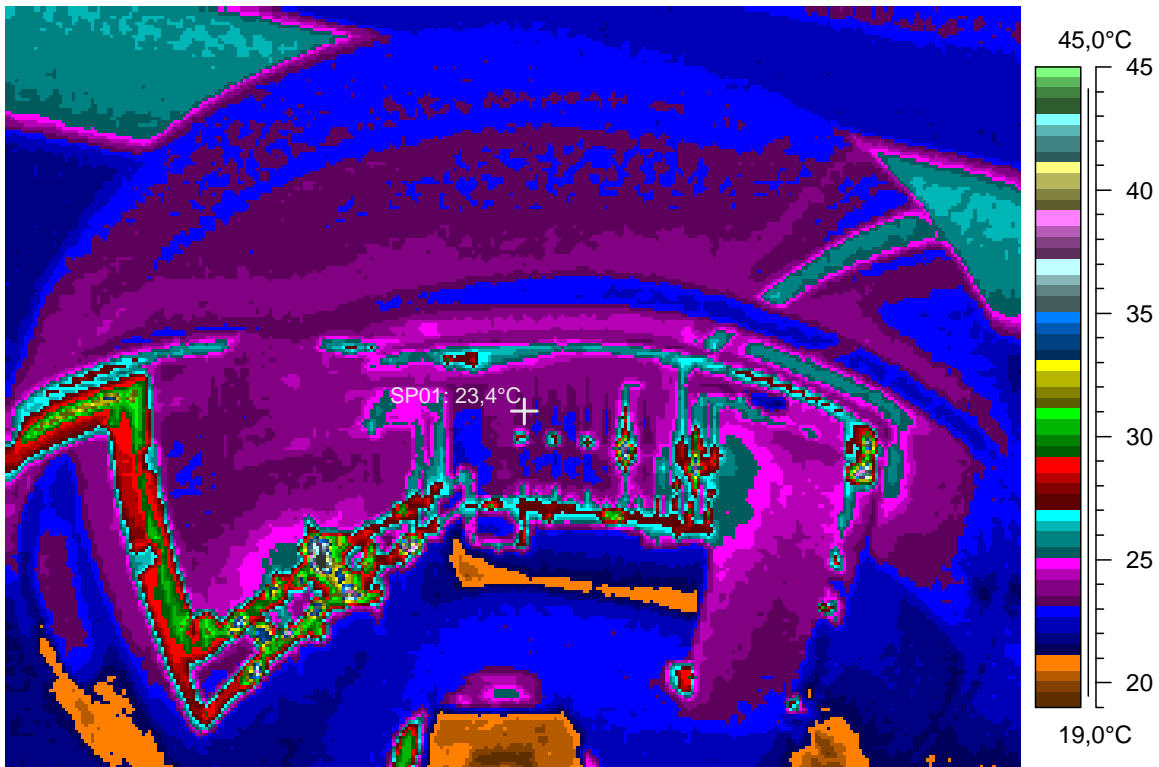
blabla

# 40 - Ir\_1361.jpg

| Label    | Value  |
|----------|--------|
| IR : max | 55,0°C |
| IR : min | 19,3°C |
| SP01     | 23,4°C |

3.1.2008

23:43:48





comments:

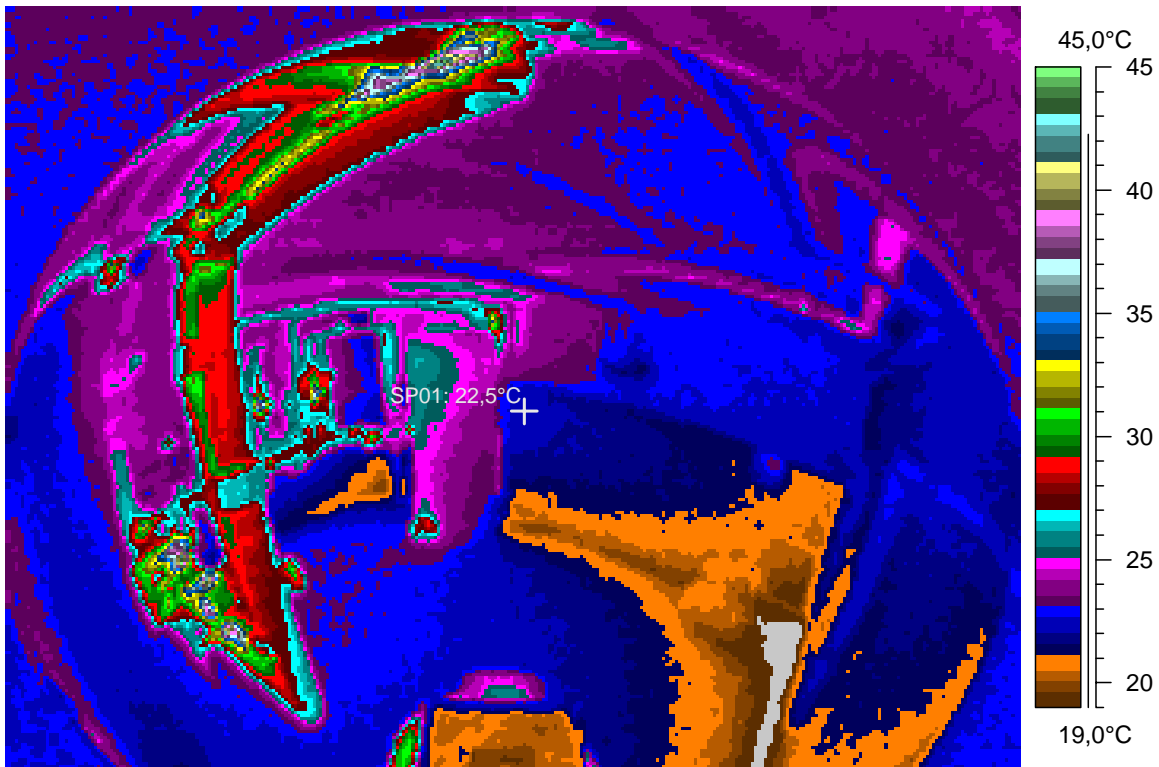
blabla

# 41 - Ir\_1362.jpg

| Label    | Value  |
|----------|--------|
| IR : max | 45,5°C |
| IR : min | 17,9°C |
| SP01     | 22,5°C |

3.1.2008

23:44:08



comments:

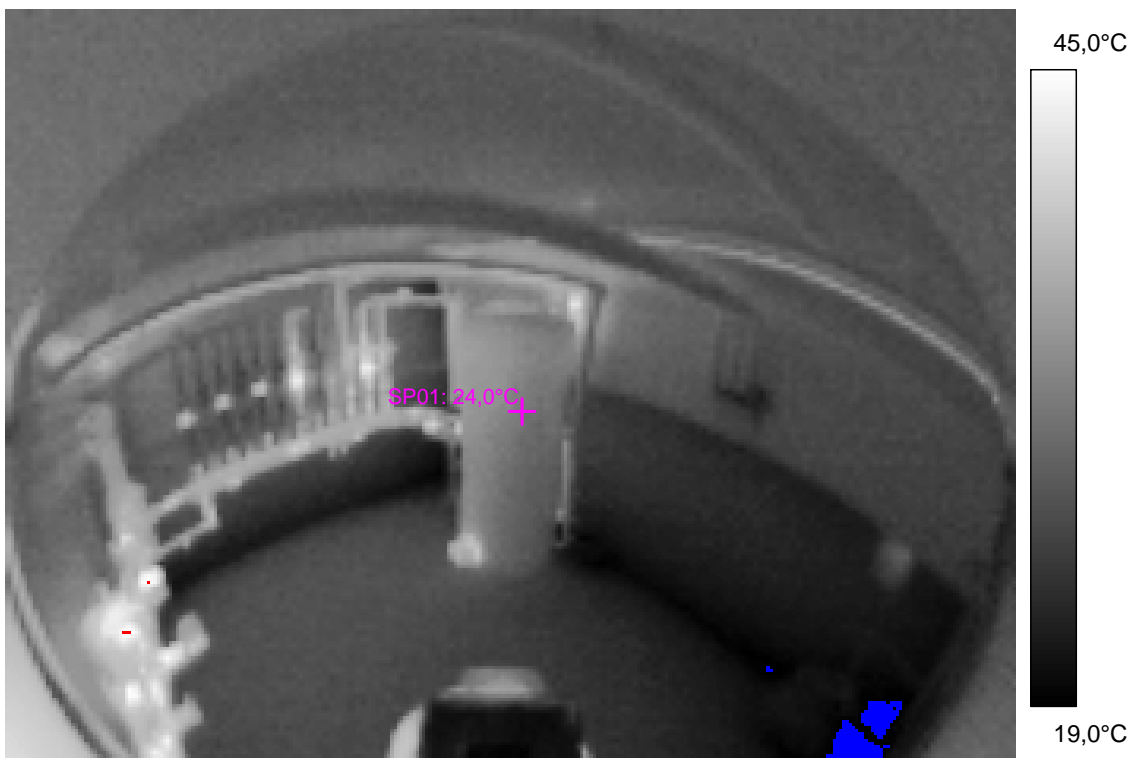
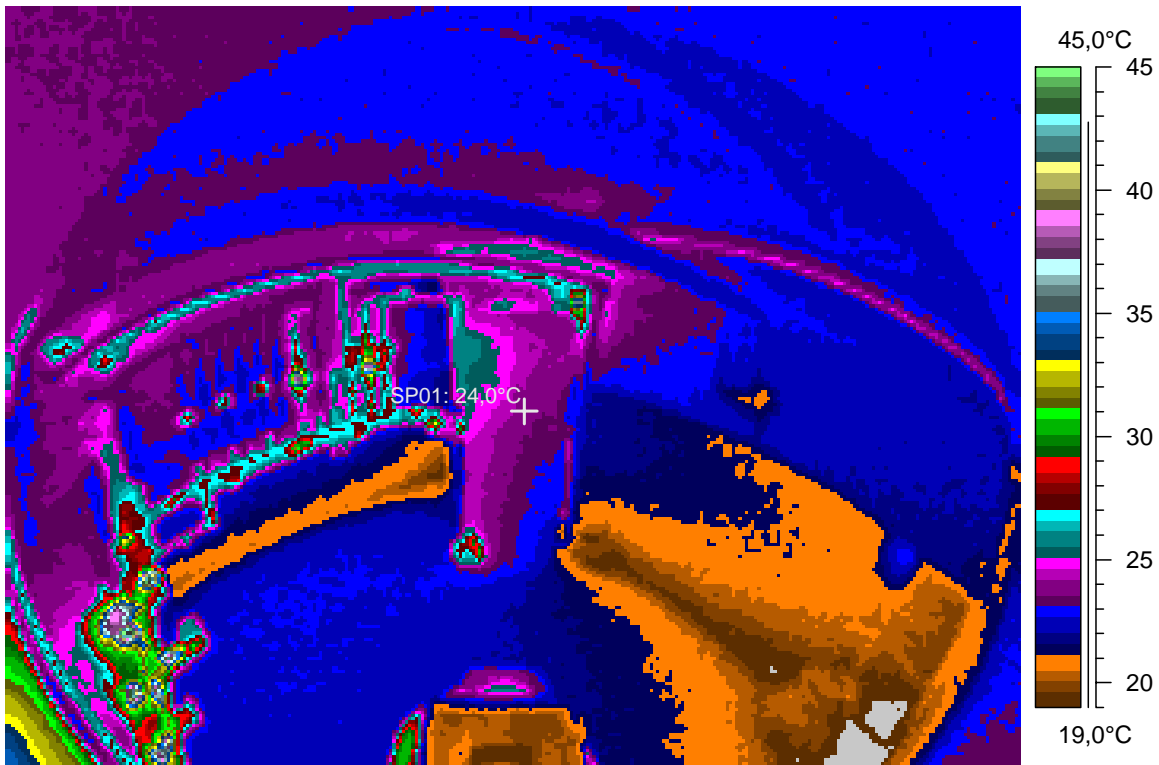
blabla

## 42 - Ir\_1363.jpg

| Label    | Value  |
|----------|--------|
| IR : max | 47,7°C |
| IR : min | 17,5°C |
| SP01     | 24,0°C |

3.1.2008

23:44:18



comments:

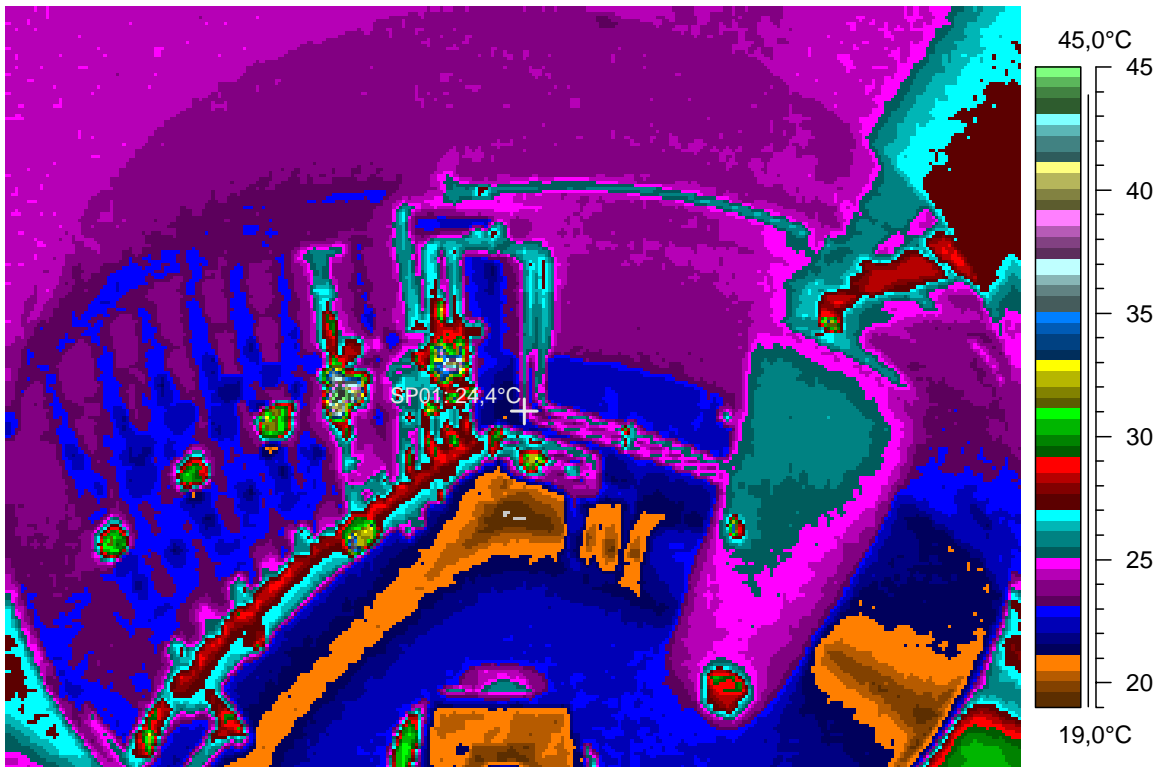
blabla

### 43 - Ir\_1364.jpg

| Label    | Value  |
|----------|--------|
| IR : max | 45,9°C |
| IR : min | 18,9°C |
| SP01     | 24,4°C |

3.1.2008

23:44:31



comments:

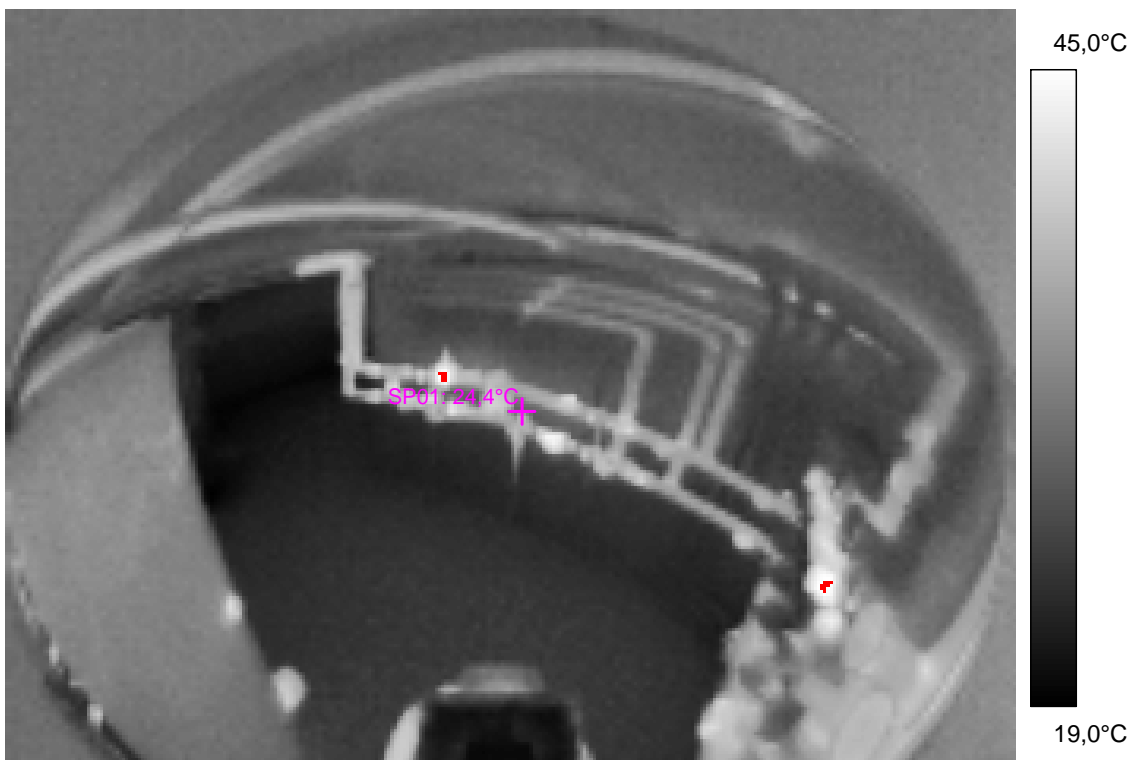
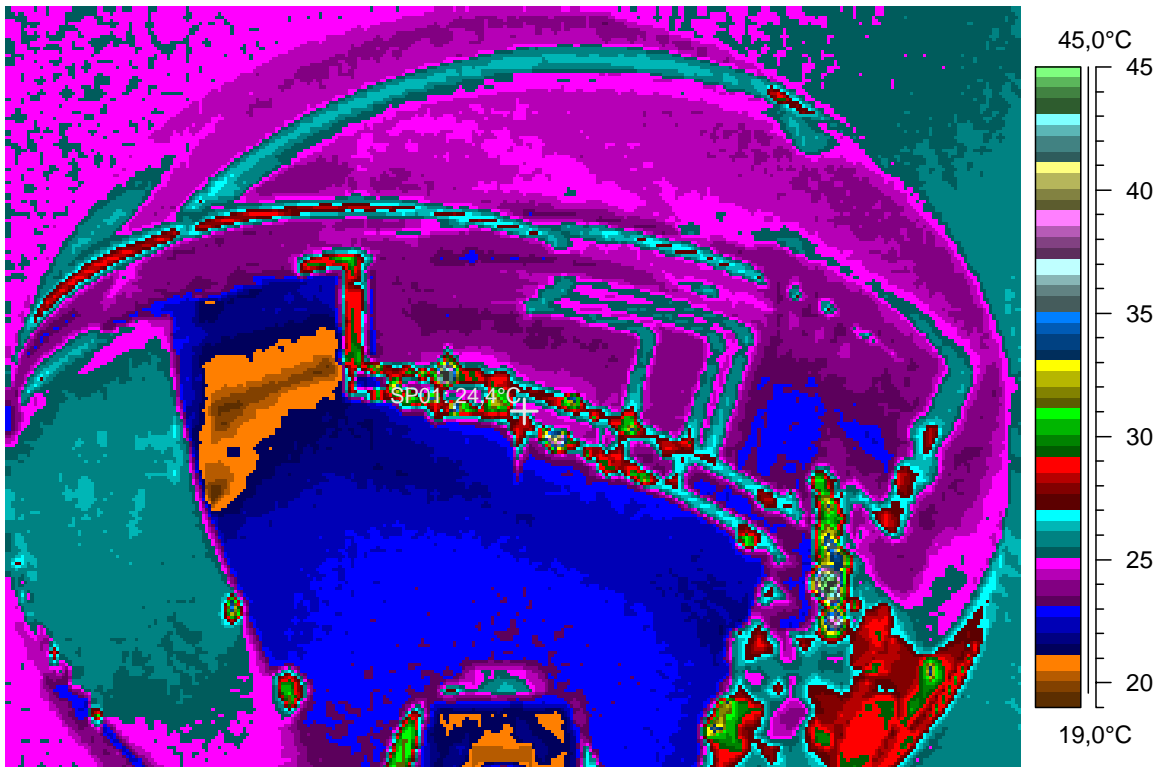
blabla

# 44 - Ir\_1365.jpg

| Label    | Value  |
|----------|--------|
| IR : max | 50,0°C |
| IR : min | 19,2°C |
| SP01     | 24,4°C |

3.1.2008

23:44:49



comments:

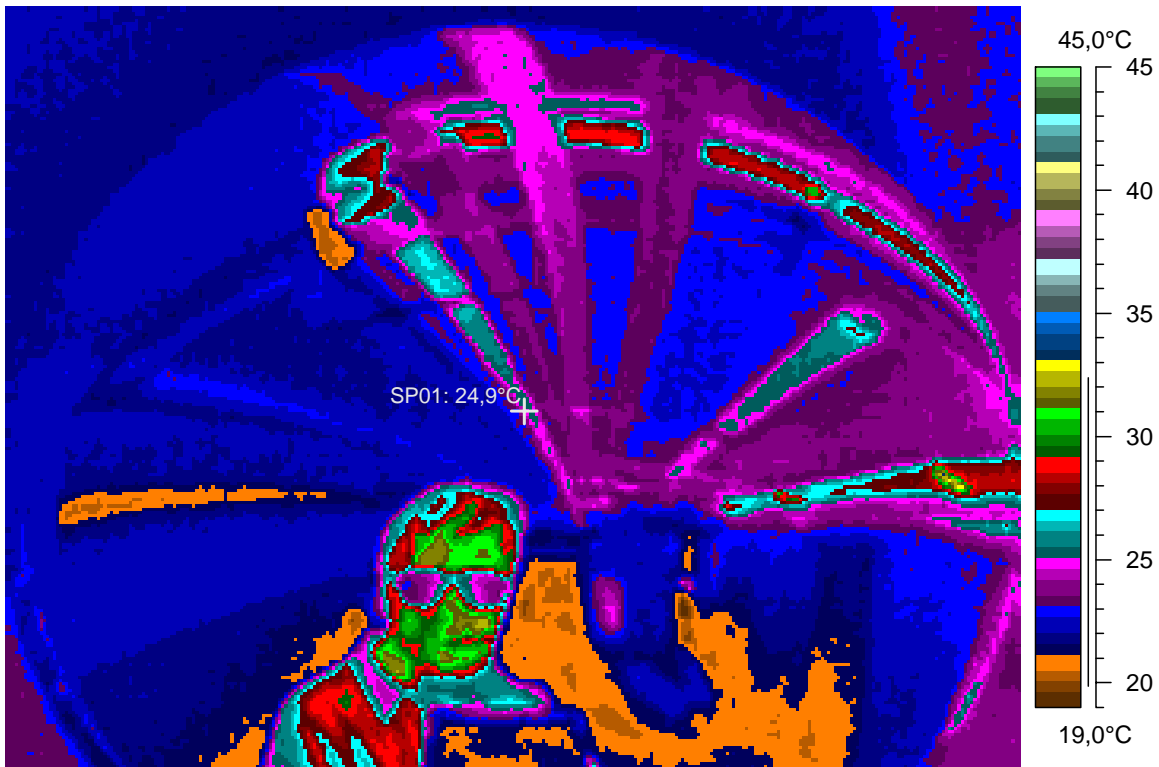
blabla

**45 - Ir\_1367.jpg**

| Label    | Value  |
|----------|--------|
| IR : max | 33,5°C |
| IR : min | 19,0°C |
| SP01     | 24,9°C |

3.1.2008

23:46:20



comments:

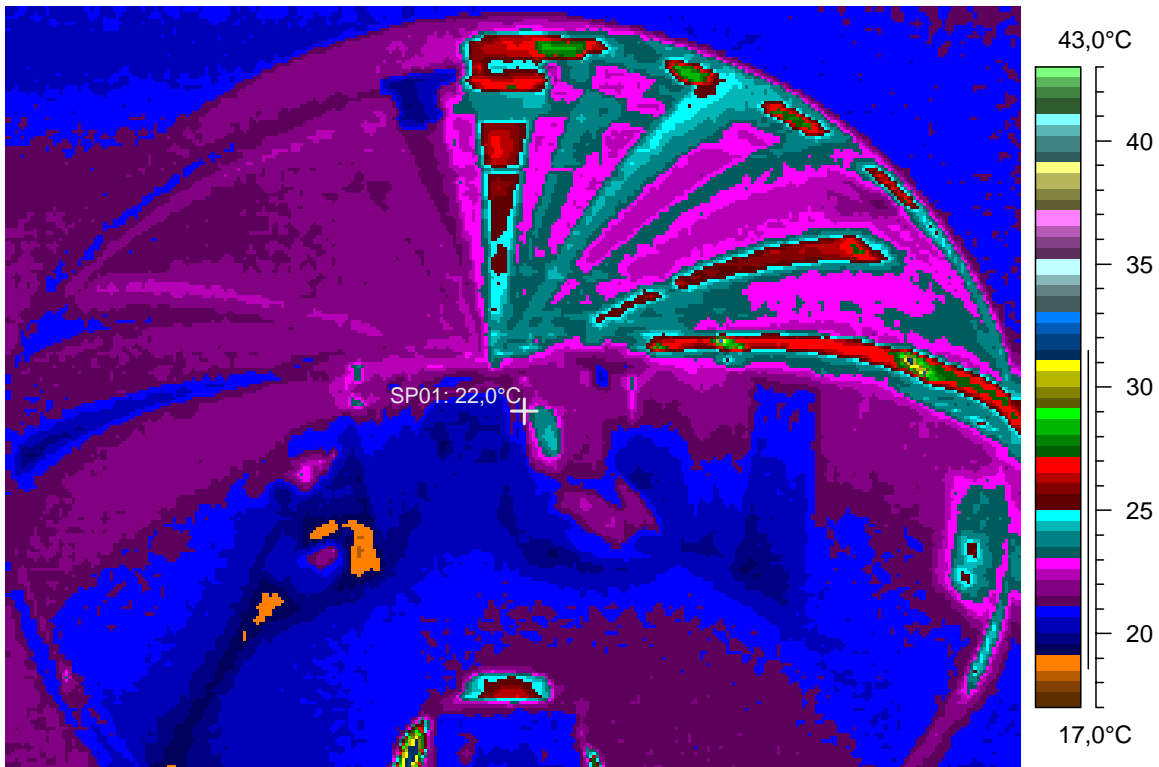
blabla

# 46 - Ir\_1368.jpg

| Label    | Value  |
|----------|--------|
| IR : max | 33,0°C |
| IR : min | 18,3°C |
| SP01     | 22,0°C |

3.1.2008

23:46:59



comments:

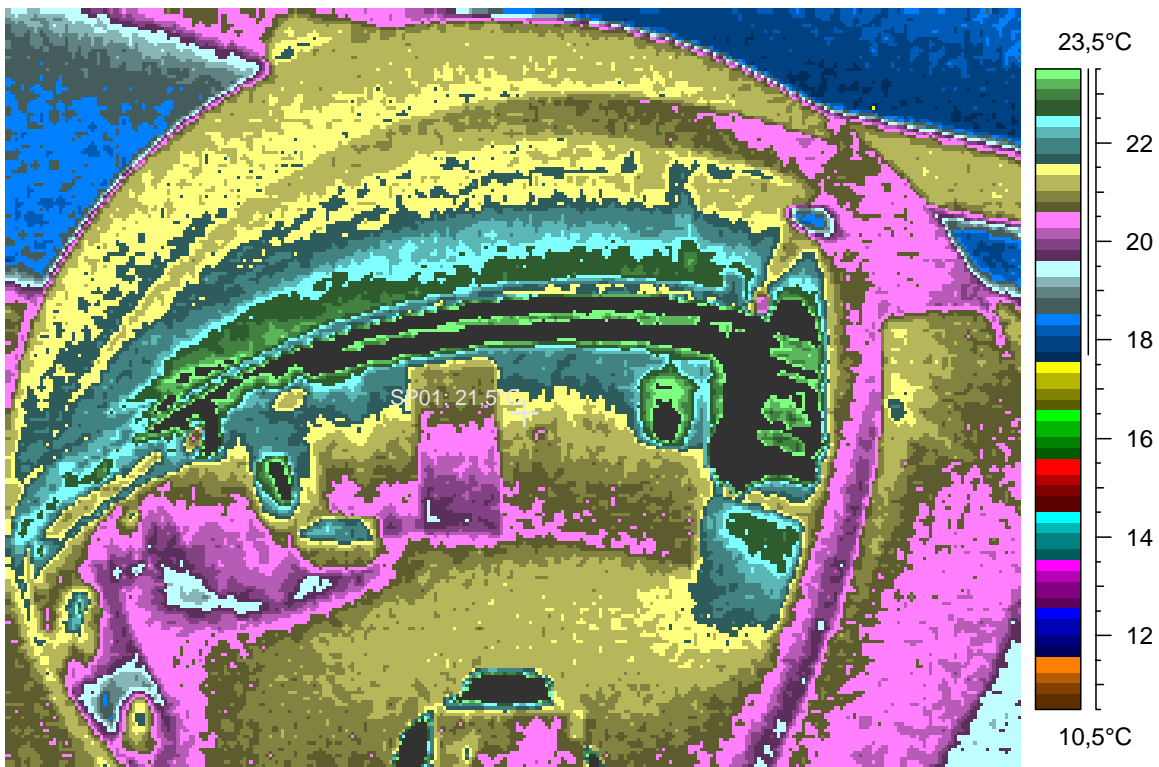
blabla

### 47 - Ir\_1369.jpg

| Label    | Value  |
|----------|--------|
| IR : max | 33,5°C |
| IR : min | 17,5°C |
| SP01     | 21,5°C |

3.1.2008

23:47:08



comments:

blabla

### 48 - Ir\_1370.jpg

| Label    | Value  |
|----------|--------|
| IR : max | 35,9°C |
| IR : min | 17,3°C |
| SP01     | 20,6°C |

3.1.2008

23:47:17

