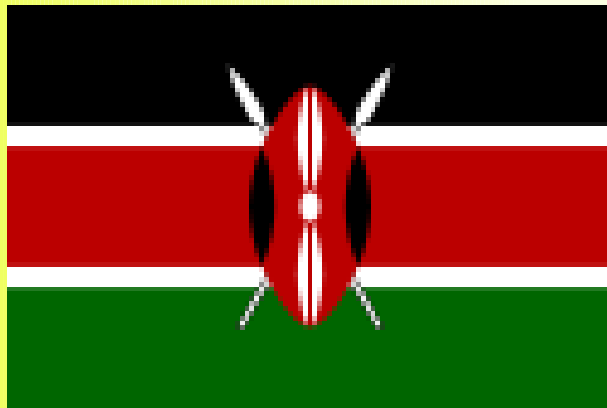
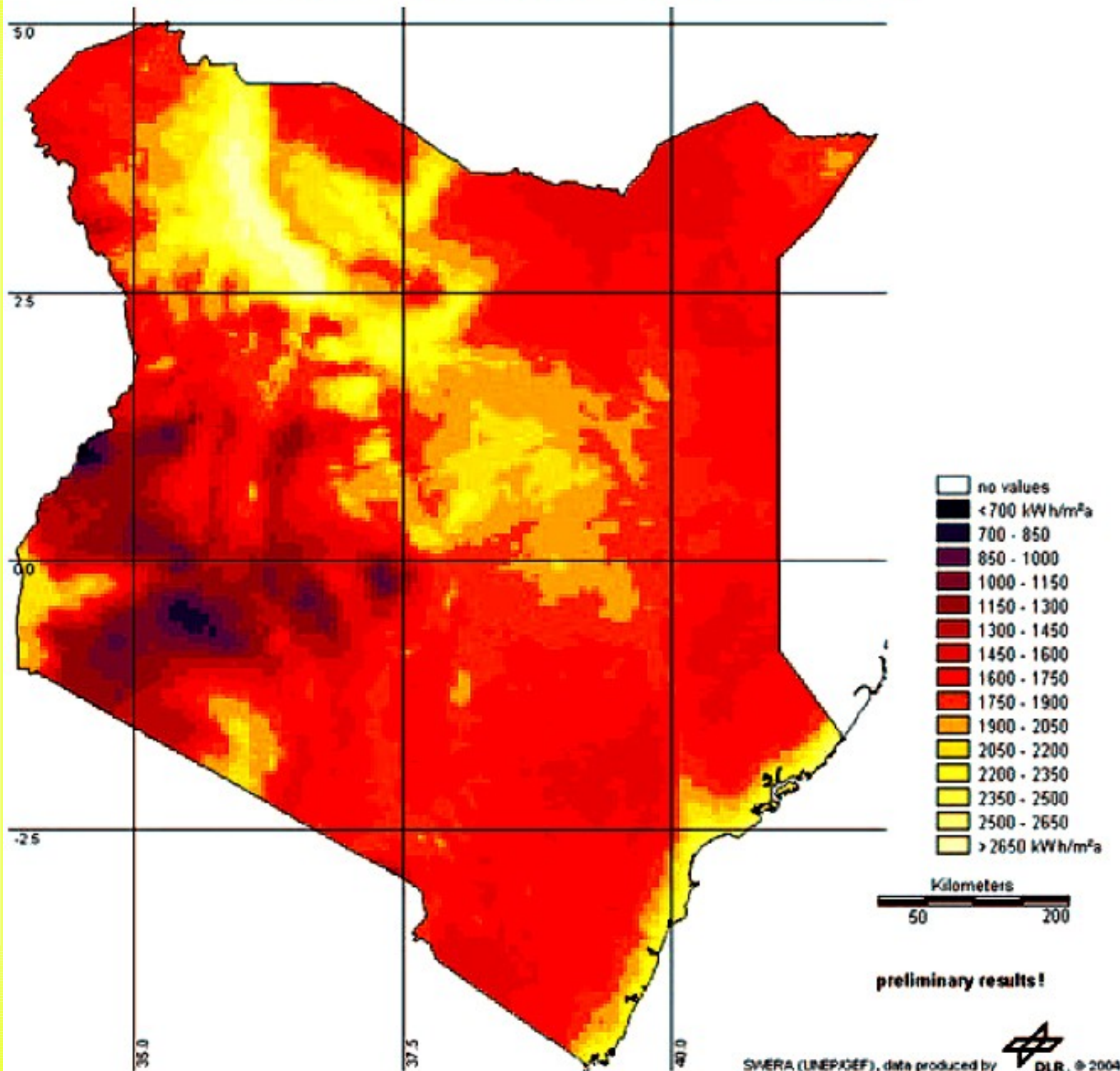


Věda v Africe

Západní Keňa - léto 2007



Yearly sum of hourly Direct Normal Irradiance for Kenya (2000-2002 averaged)













Škola













Sirotčinec







Jídlo





Doprava







Nairobi







Sesuv







Projekty

- Meteorologická stanice
- Biologický (pískový) filtr
- Sluneční vařiče
- Komíny
- Hliněná kamna
- Sázání stromů

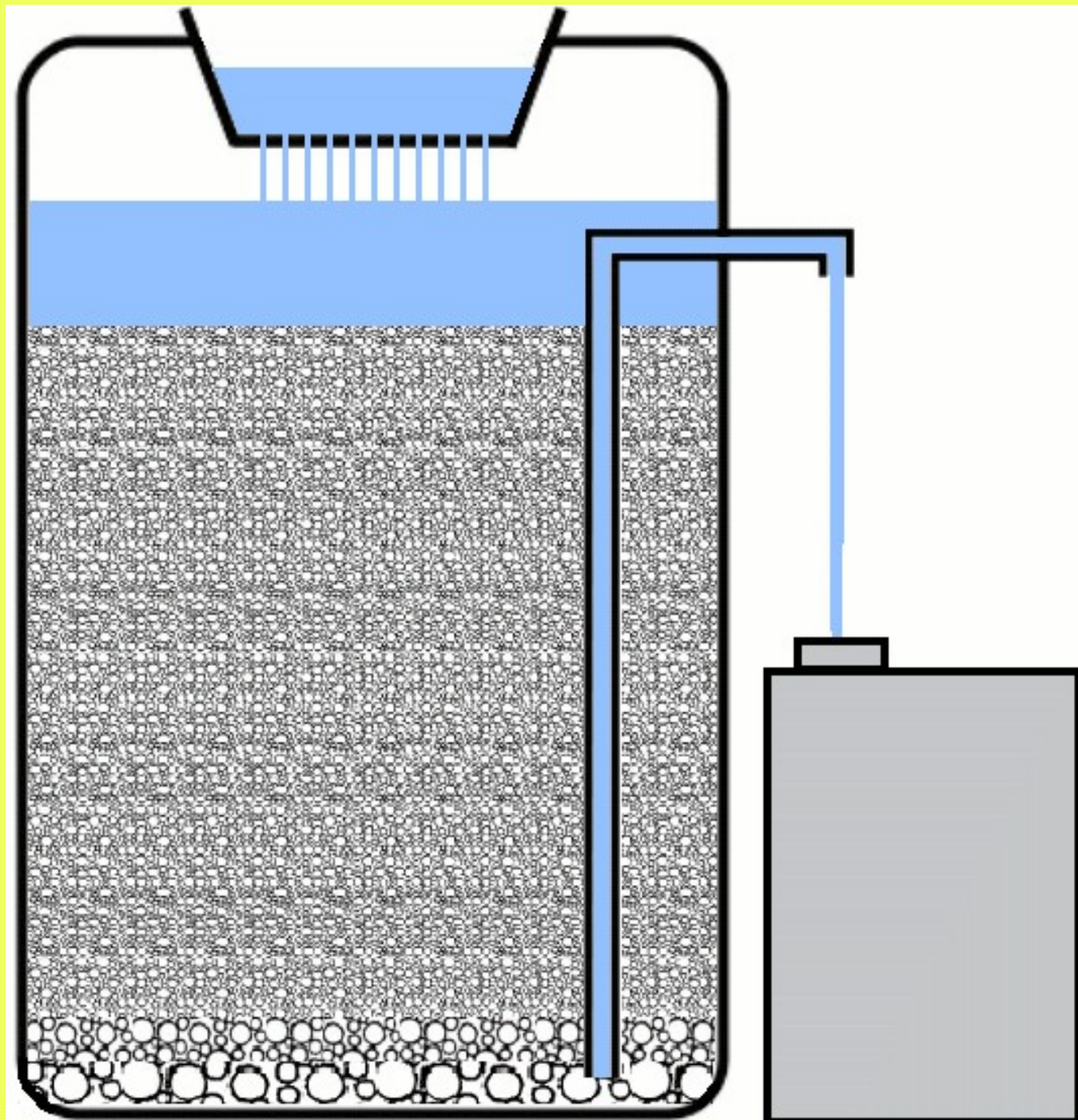




August 2007

No.	Time	Tcurrent	Tmin	Tmax	Precipitation		
		[°C]	[°C]	[°C]	mm	PH	
1.	12:30	27	17	27	7,5	4	Kambo
2.	11:55	25	15	25,5	4	4	Tomas
3.	12:40	27	14,5	28	15,5	4	Tomas
4.	13:30	28	15	28	✓	4	Tomas
5.	12:06	38	14,5	39	23,5	5	Kamb
6.	12:36	27	16,5	26,5	0	0	Barazan
7.	1:07	28	16	27,5	1	4	Kamb
8.	2:29	26	16	26,5	17,5	4	Kamb
9.	12:25	23,5	15,5	25	32,5	5	Tomas
10.	12:38	25	15	28	37	5	Herbert
11.	12:45	23,5	15,5	25,5	12	4	Tomas
12.	1:10	25	17	27	8	4	Herbert
13.	11:47	26	17	28	10	-	Herbert
14.	1:36	26	16	27	15	4	Herbert
15.							
16.							
17.							
18.							
19.							
20.							
21.							
22.							
23.							







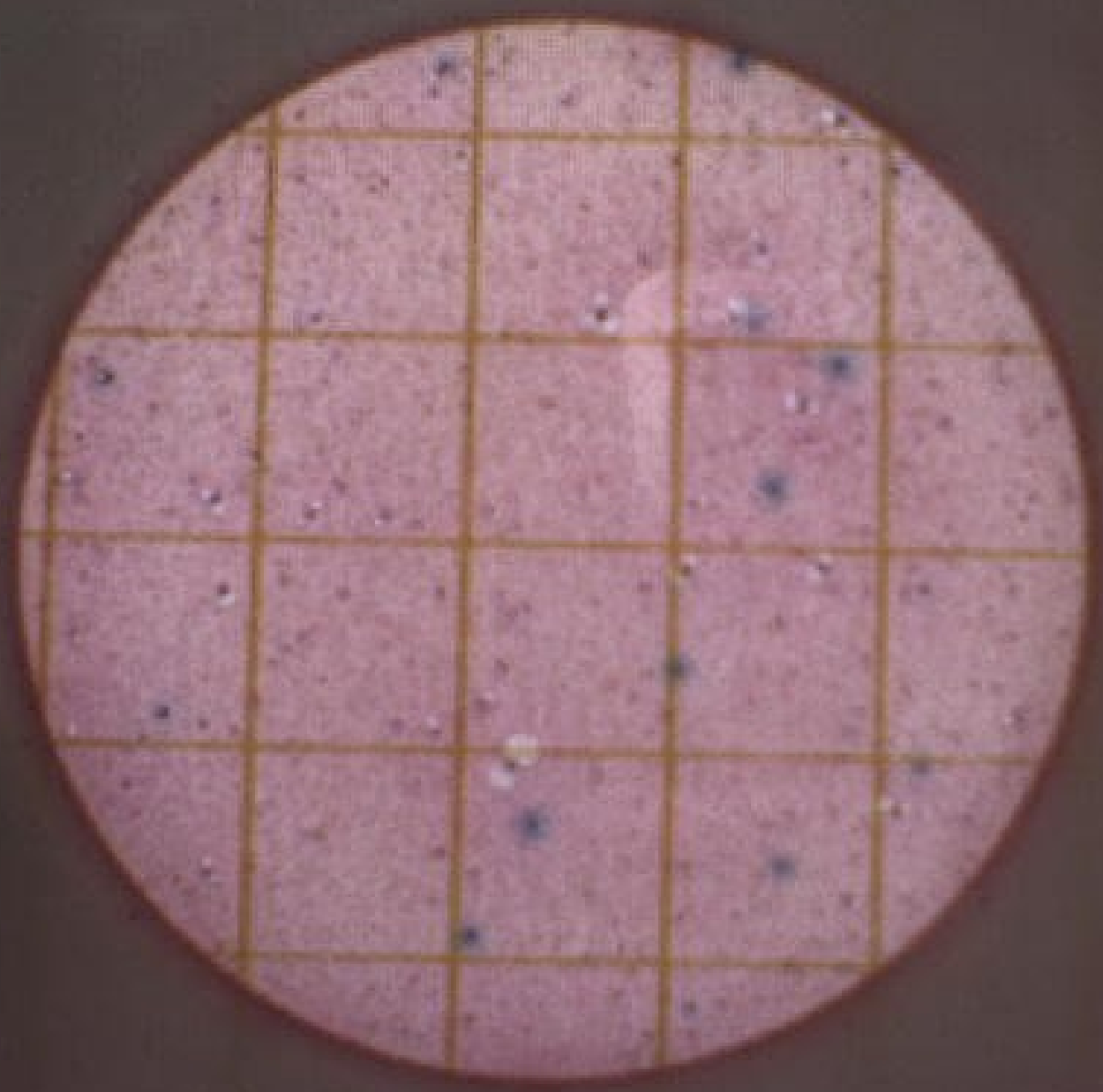






School Well 103-04 MB
TMSC

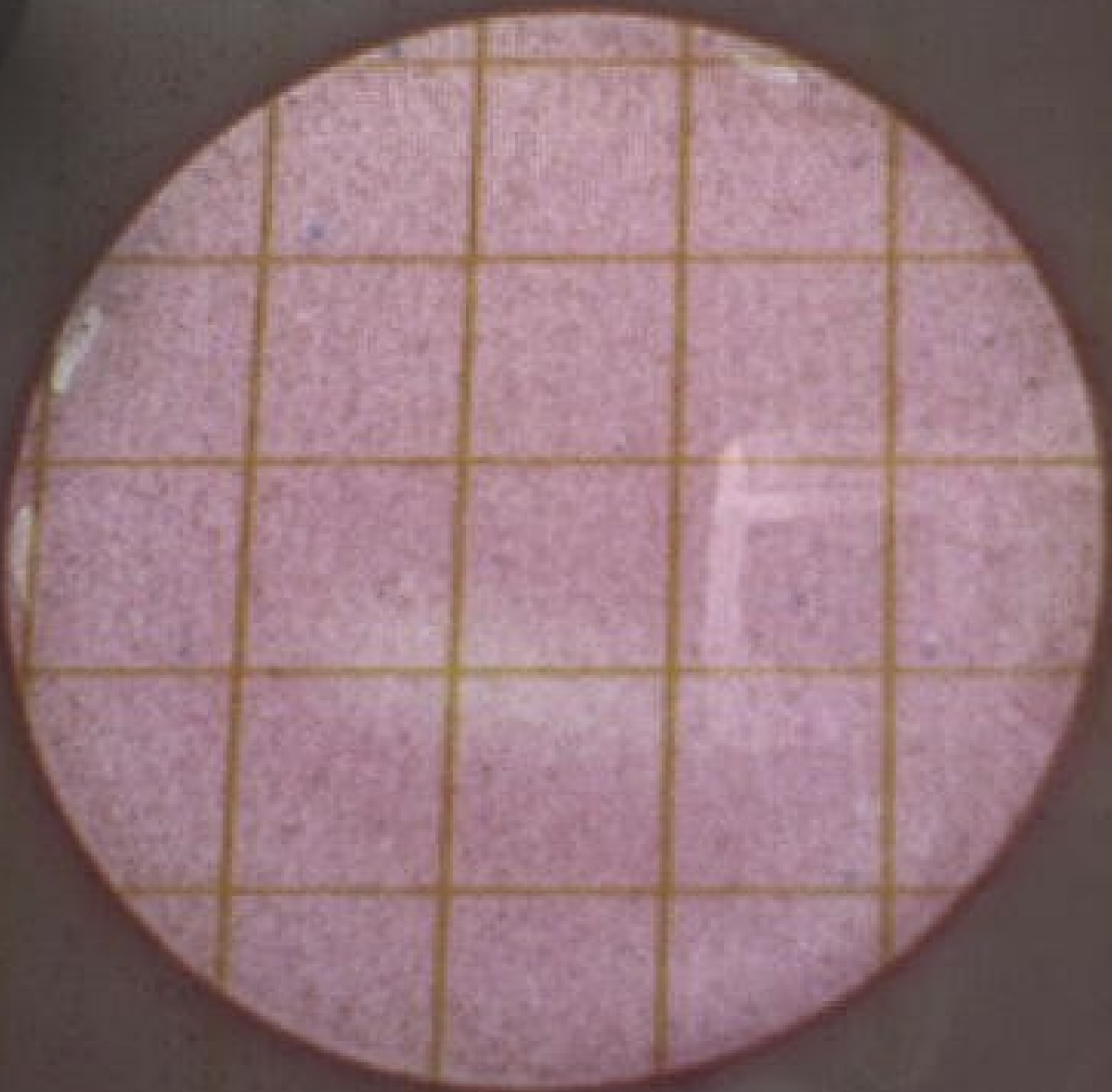
10/08/13
13:30



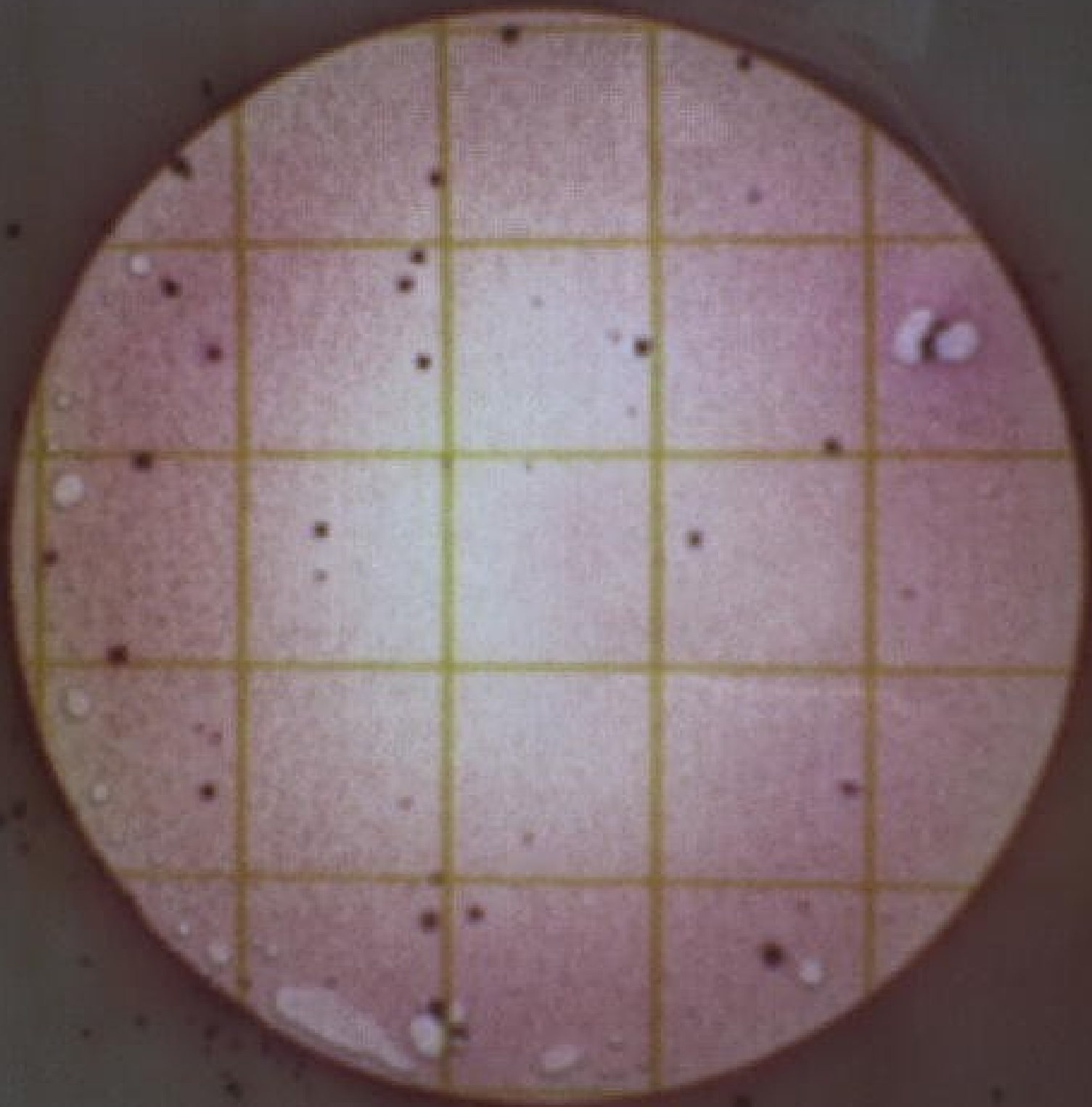
Sand Filicer
TMSC School

3M
10/08/1

17:0

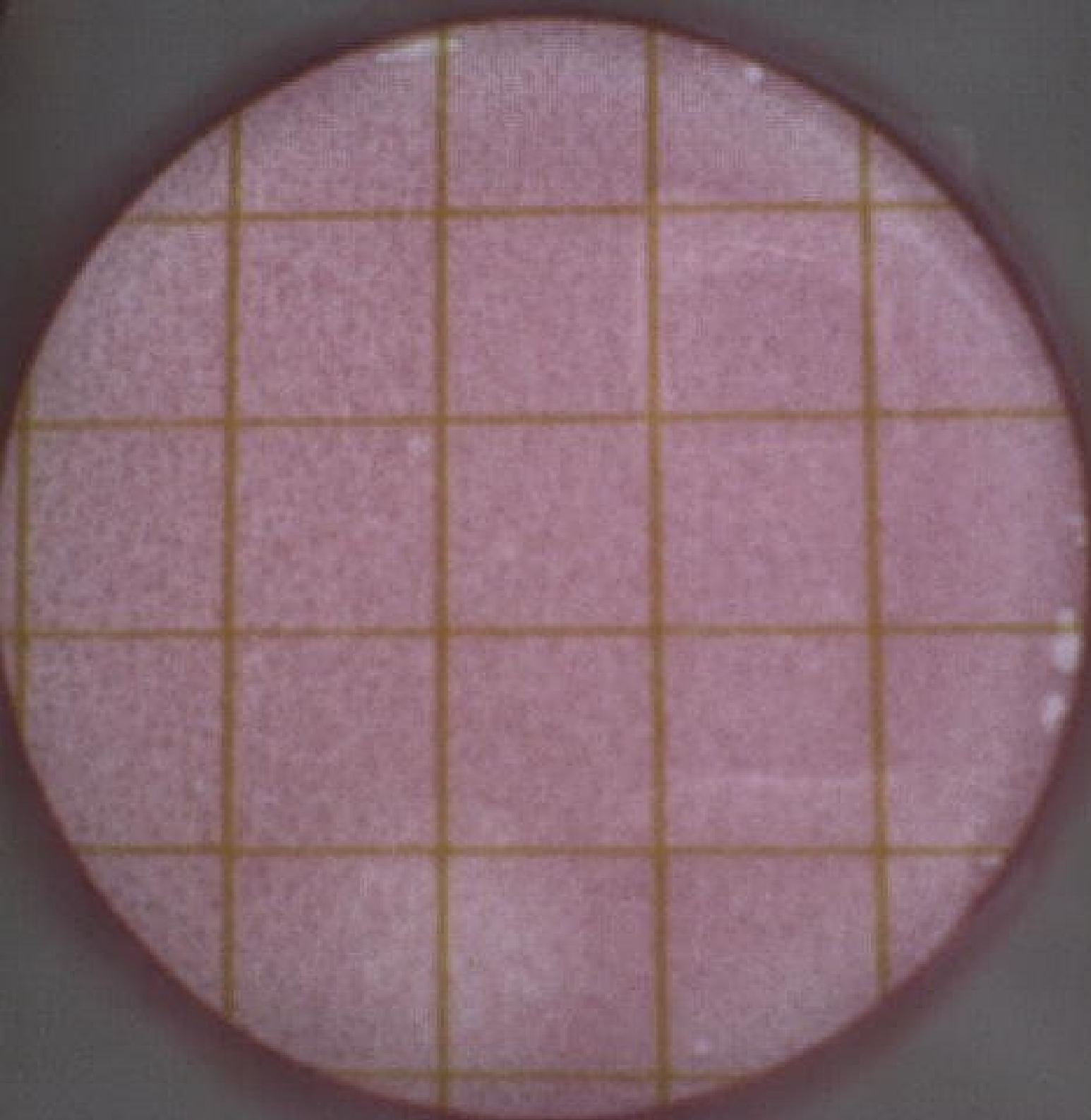






17-11

3L



18:00

1218/0

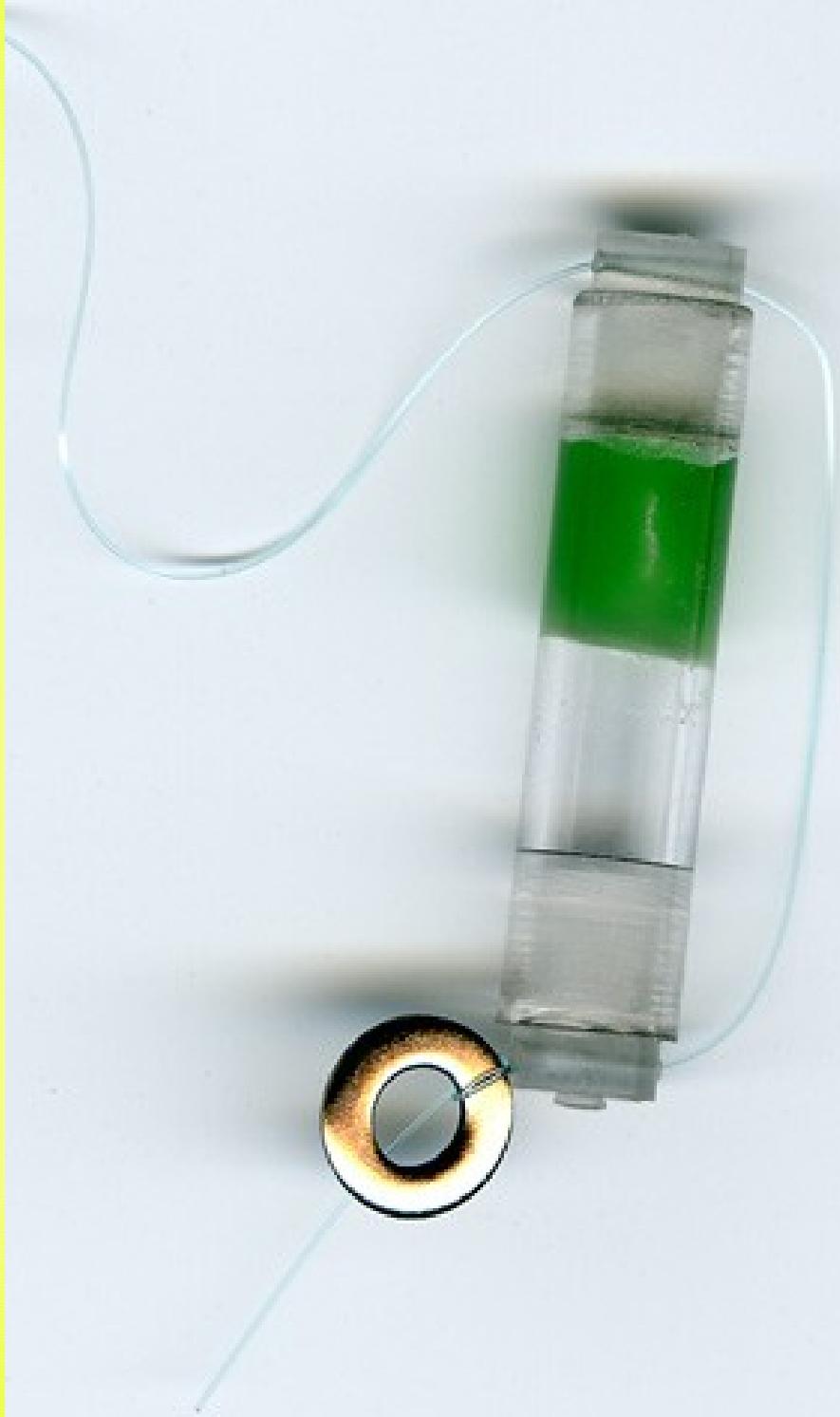
A





































Růst populace v Keni (1900-2030)

