

comments:

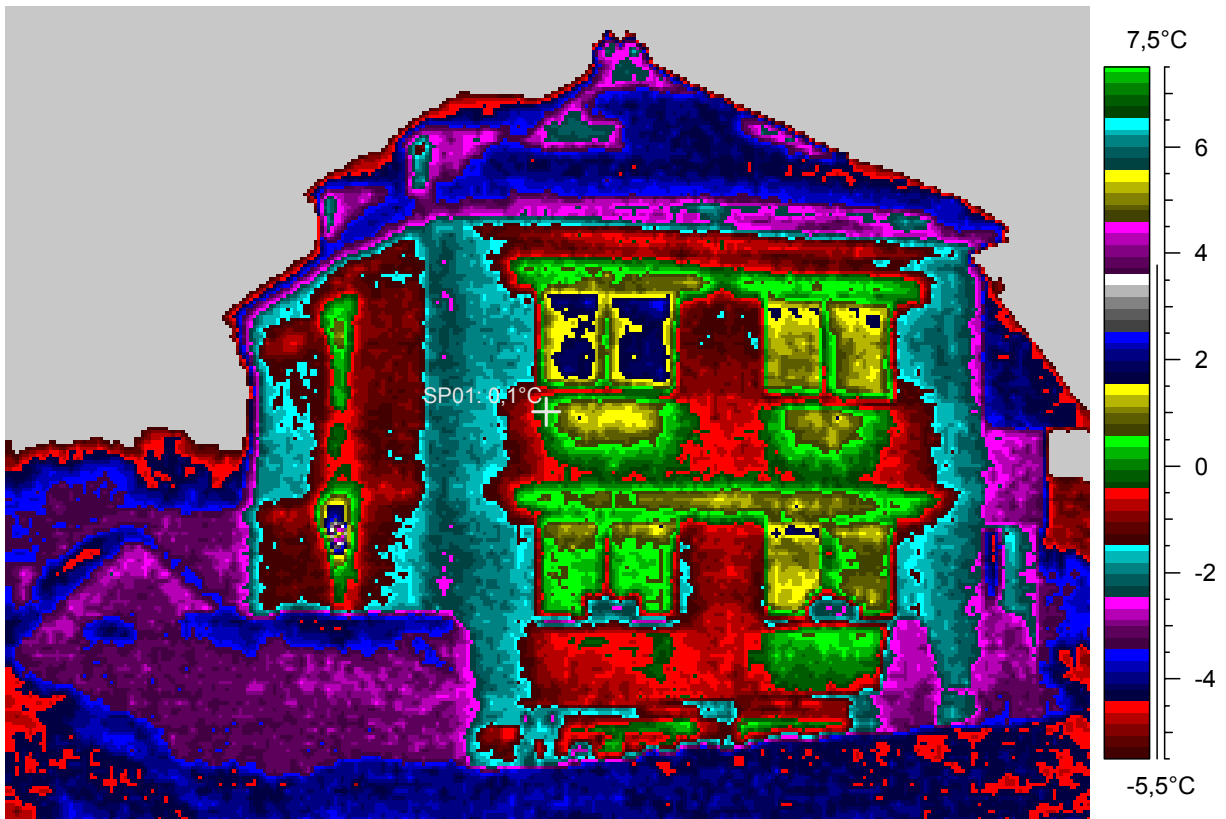
blabla

1 - Ir_1913.jpg

Label	Value
IR : max	5,9°C
IR : min	-9,6°C
SP01	0,1°C

19.2.2005

20:45:36



comments:

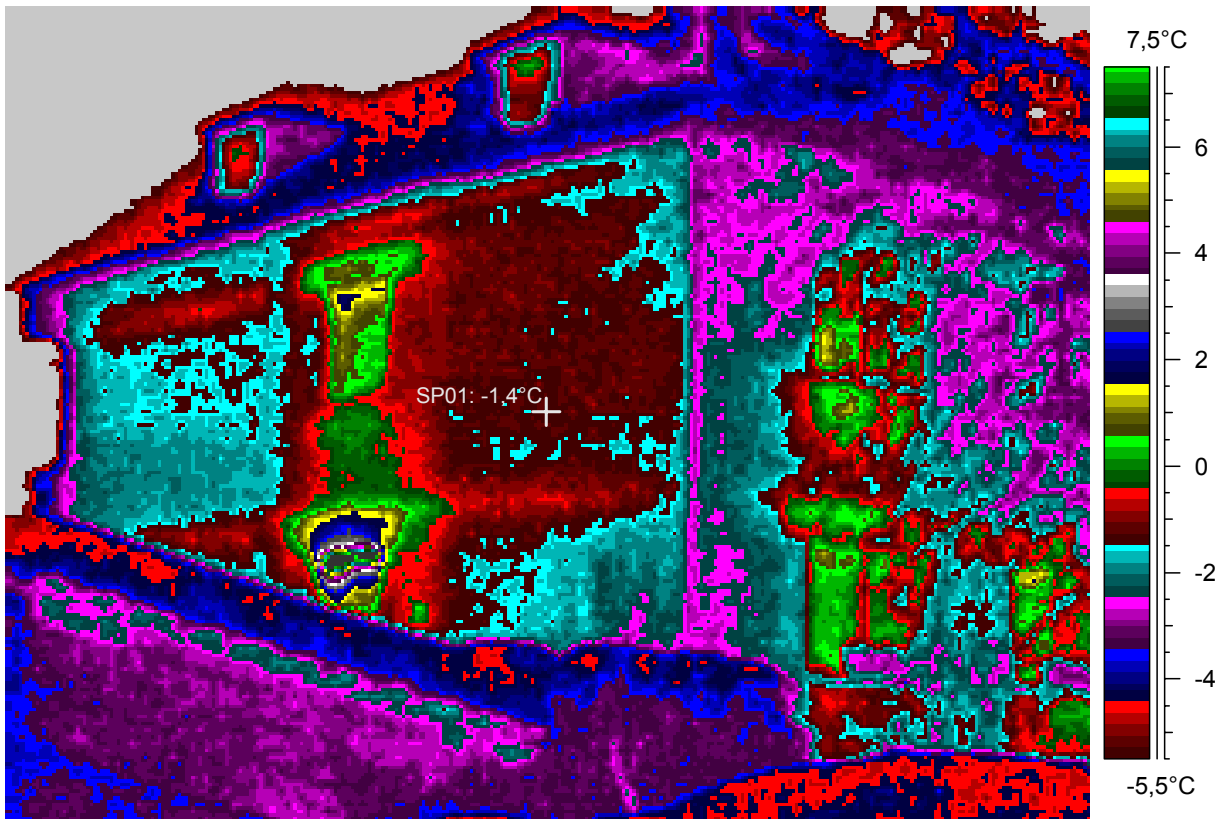
blabla

2 - Ir_1915.jpg

Label	Value
IR : max	9,1°C
IR : min	-9,9°C
SP01	-1,4°C

19.2.2005

20:47:40



comments:

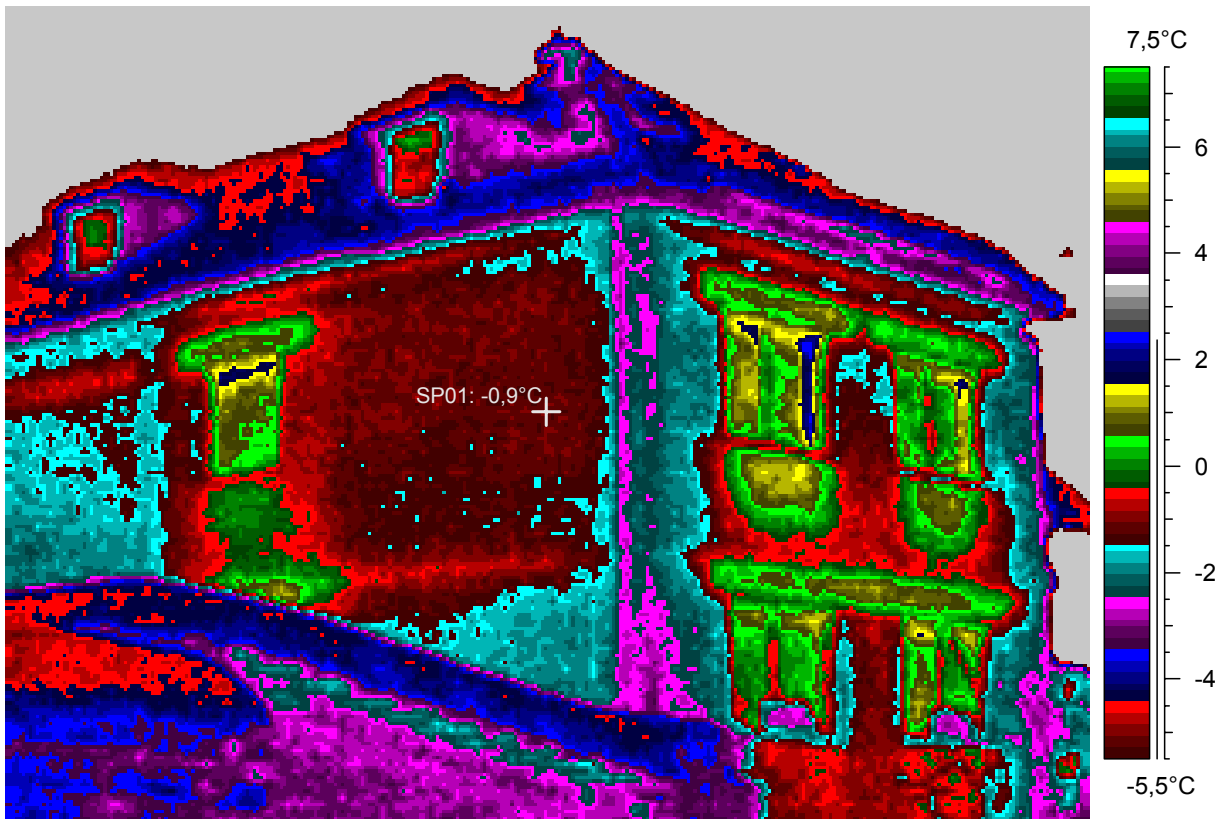
blabla

3 - Ir_1916.jpg

Label	Value
IR : max	2,6°C
IR : min	-10,2°C
SP01	-0,9°C

19.2.2005

20:48:24



comments:

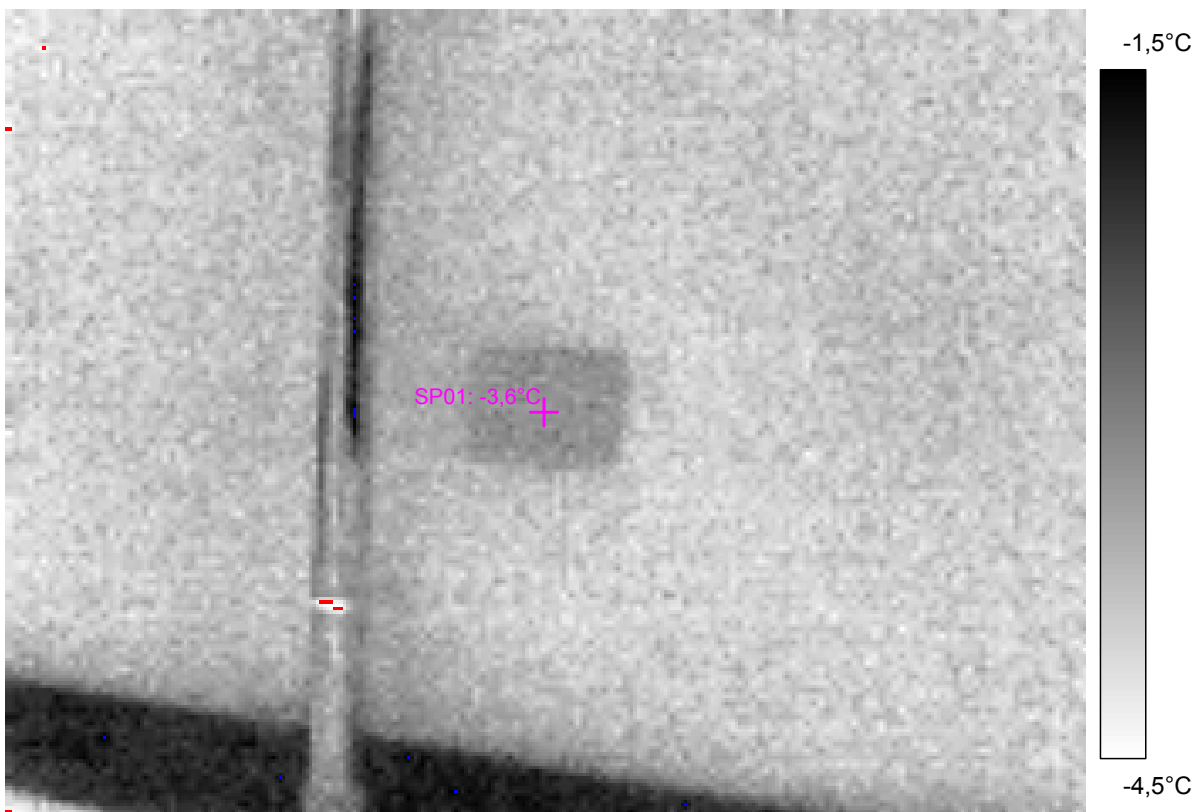
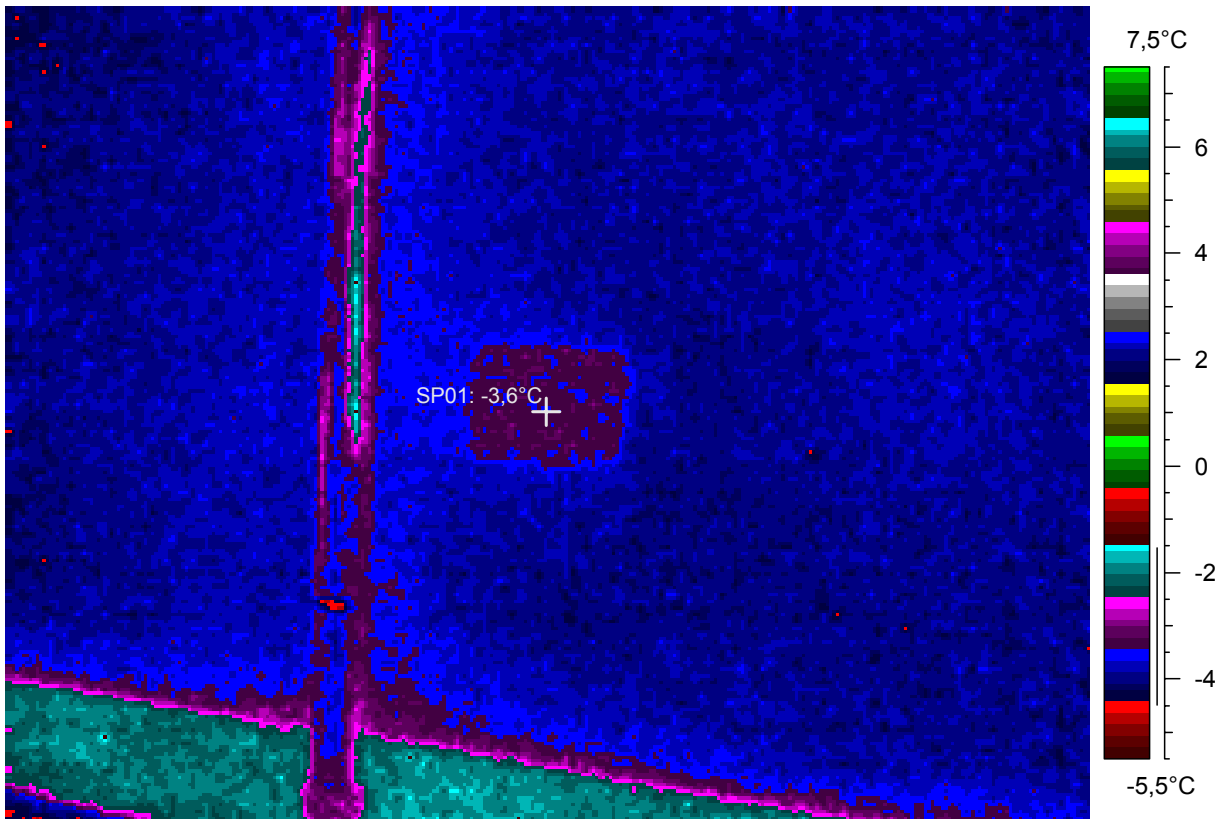
blabla

4 - Ir_1917.jpg

Label	Value
IR : max	-1,4°C
IR : min	-4,7°C
SP01	-3,6°C

19.2.2005

20:52:21



comments:

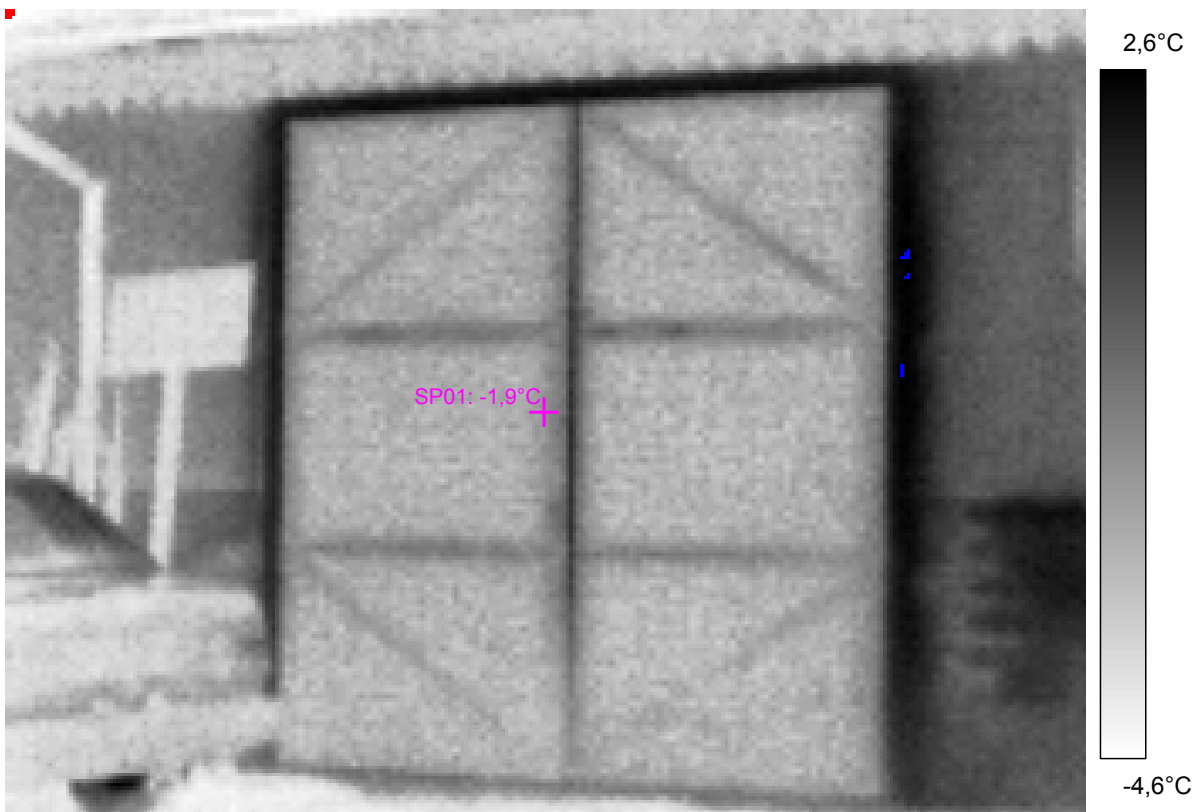
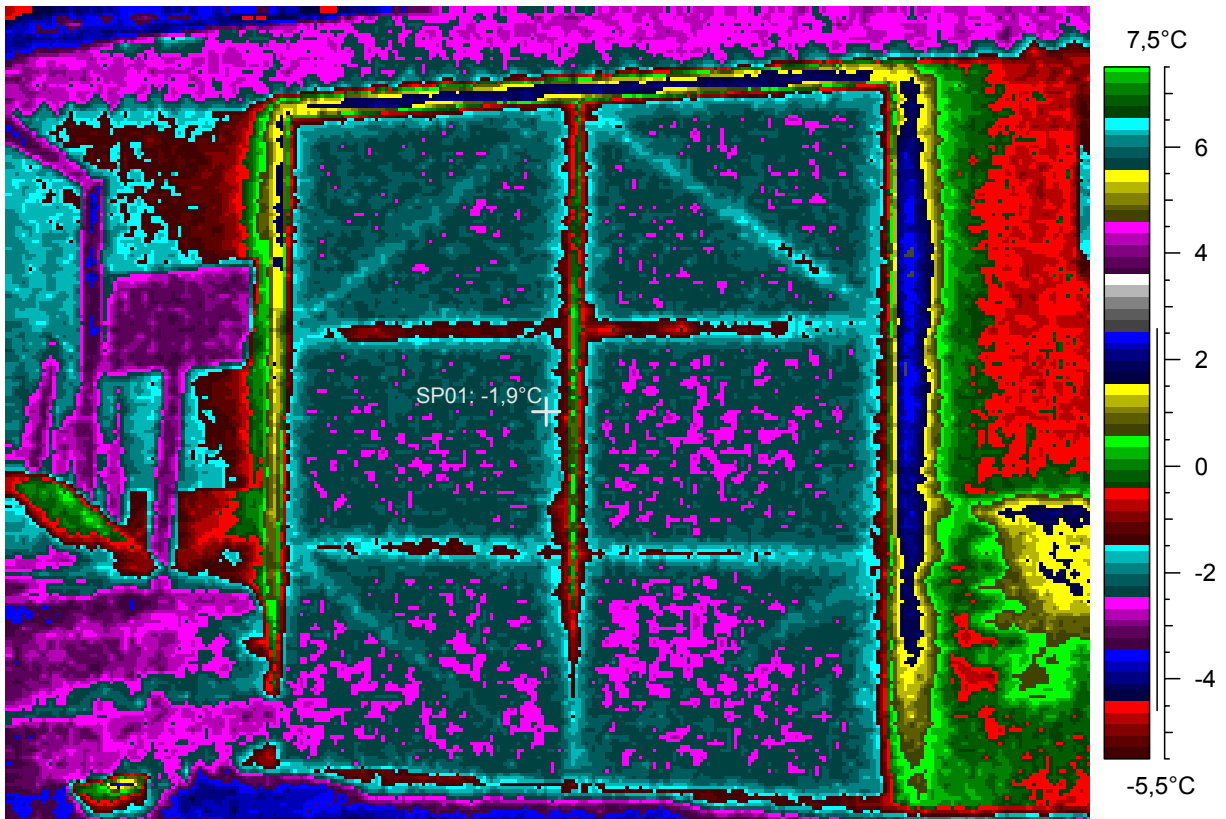
blabla

5 - Ir_1918.jpg

Label	Value
IR : max	2,7°C
IR : min	-4,7°C
SP01	-1,9°C

19.2.2005

20:54:01



comments:

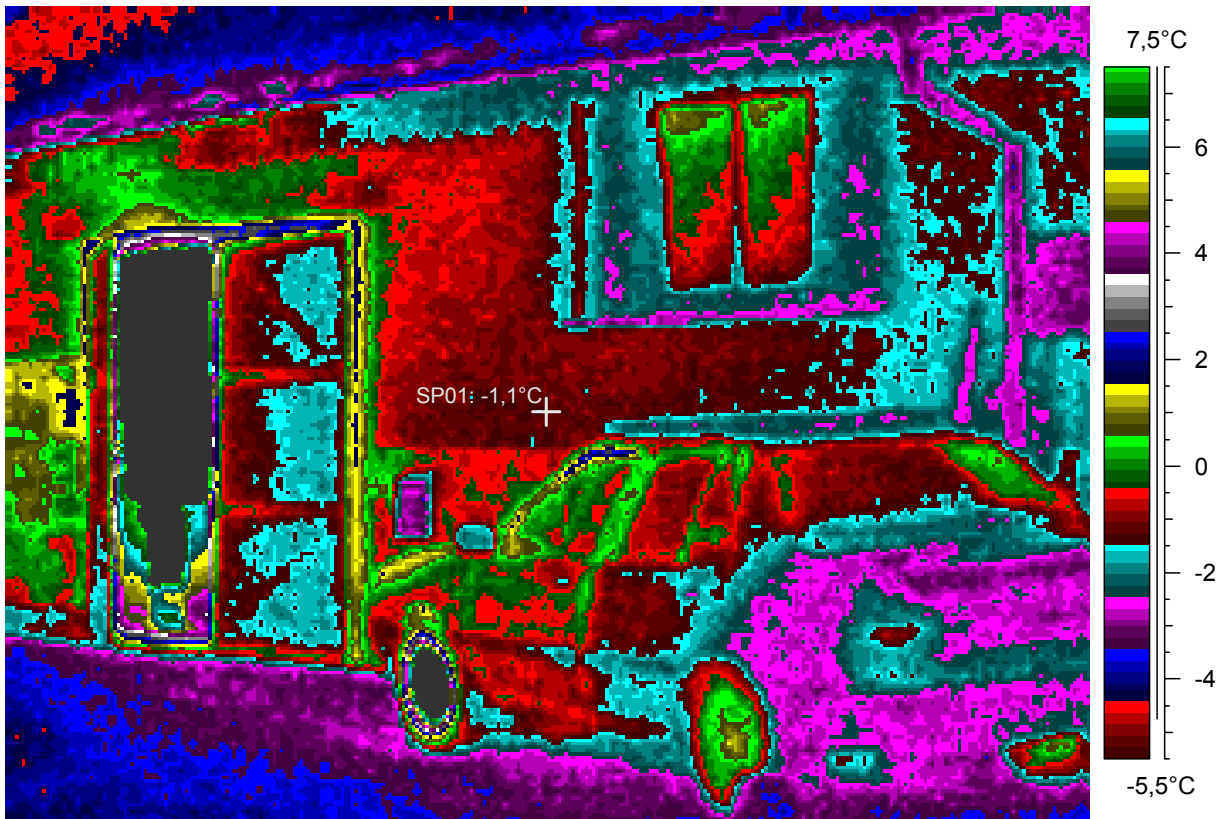
blabla

6 - Ir_1919.jpg

Label	Value
IR : max	20,9°C
IR : min	-5,0°C
SP01	-1,1°C

19.2.2005

20:54:13



comments:

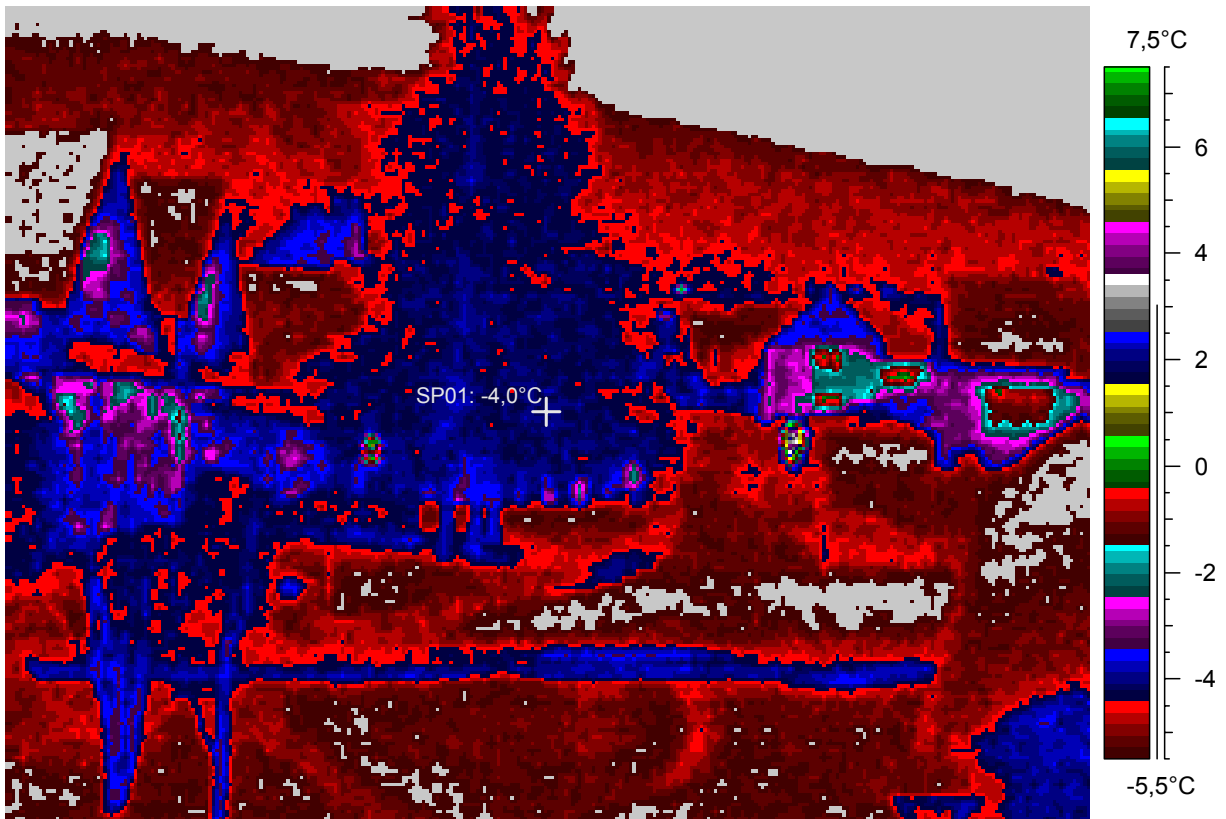
blabla

7 - Ir_1920.jpg

Label	Value
IR : max	4,3°C
IR : min	-9,5°C
SP01	-4,0°C

19.2.2005

21:57:45



comments:

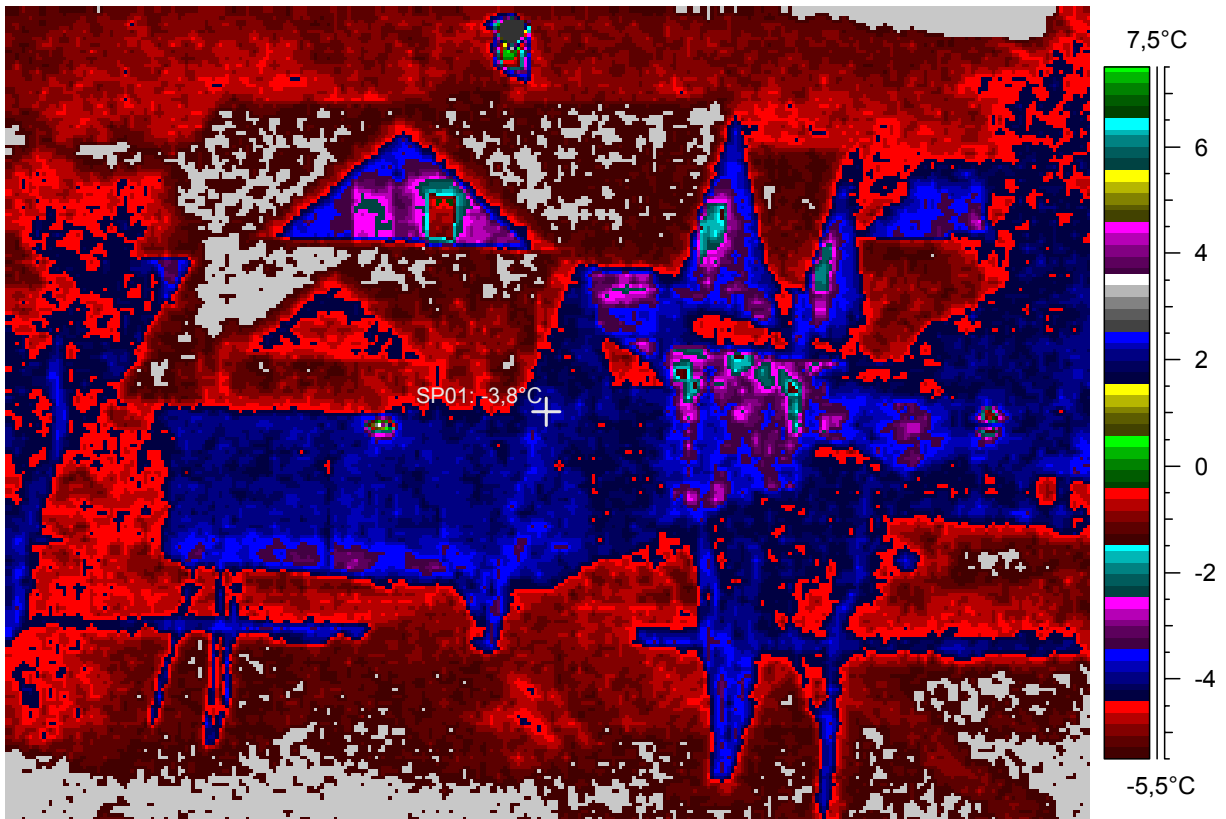
blabla

8 - Ir_1921.jpg

Label	Value
IR : max	54,2°C
IR : min	-9,3°C
SP01	-3,8°C

19.2.2005

21:58:34



comments:

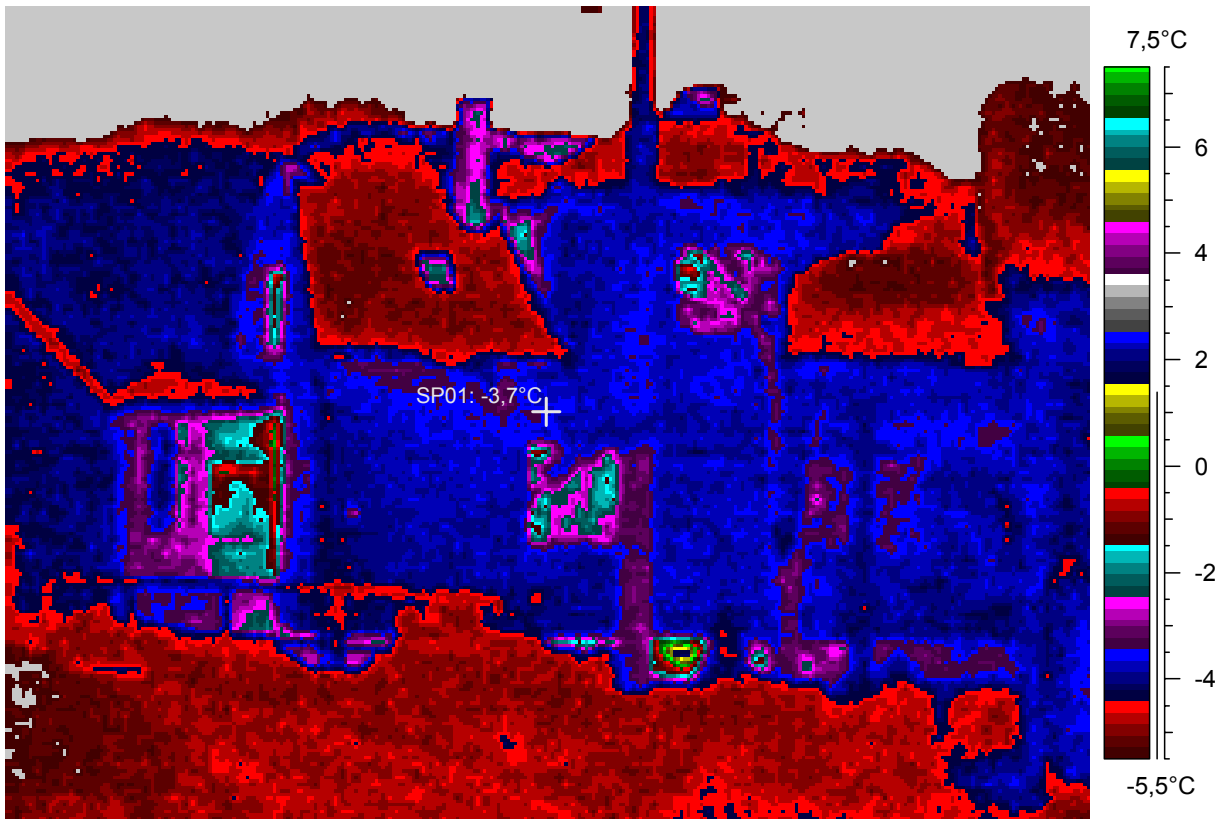
blabla

9 - Ir_1922.jpg

Label	Value
IR : max	1,9°C
IR : min	-9,4°C
SP01	-3,7°C

19.2.2005

22:11:19



comments:

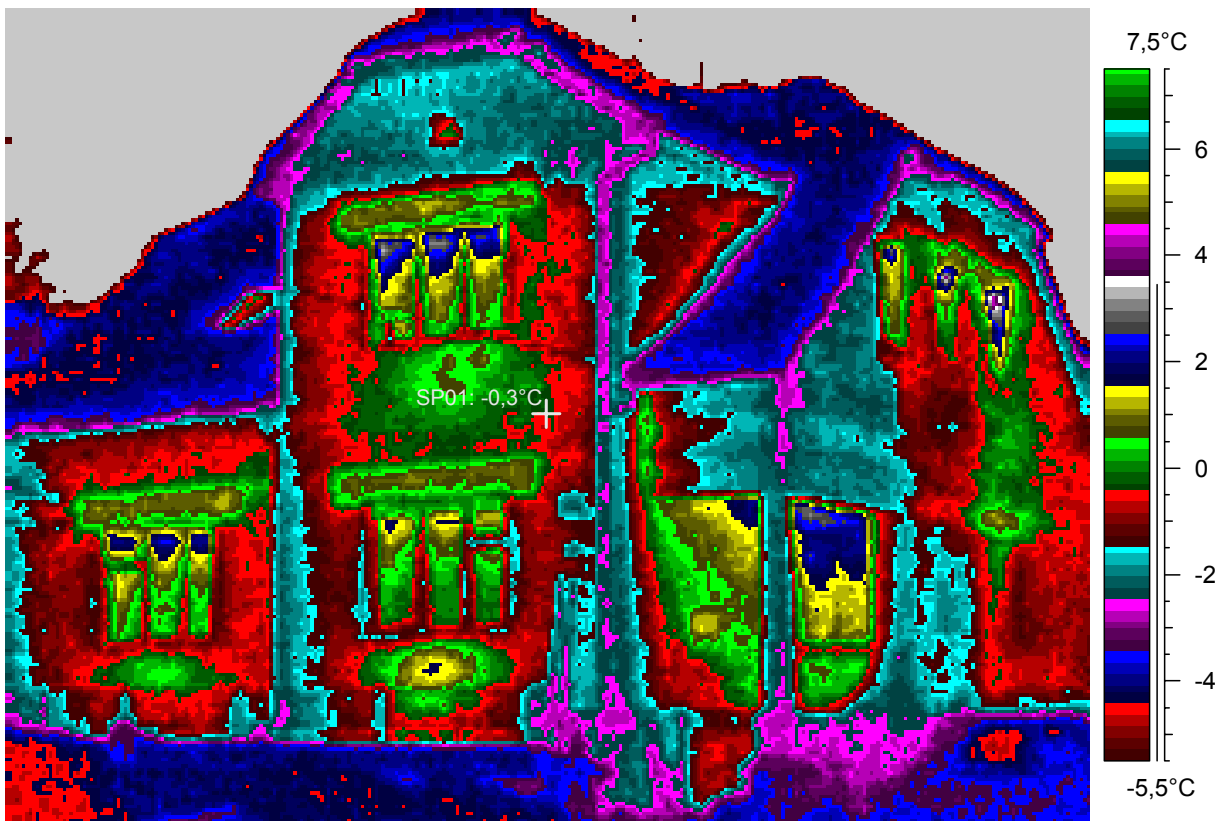
blabla

10 - Ir_1923.jpg

Label	Value
IR : max	4,4°C
IR : min	-9,1°C
SP01	-0,3°C

19.2.2005

22:11:51



comments:

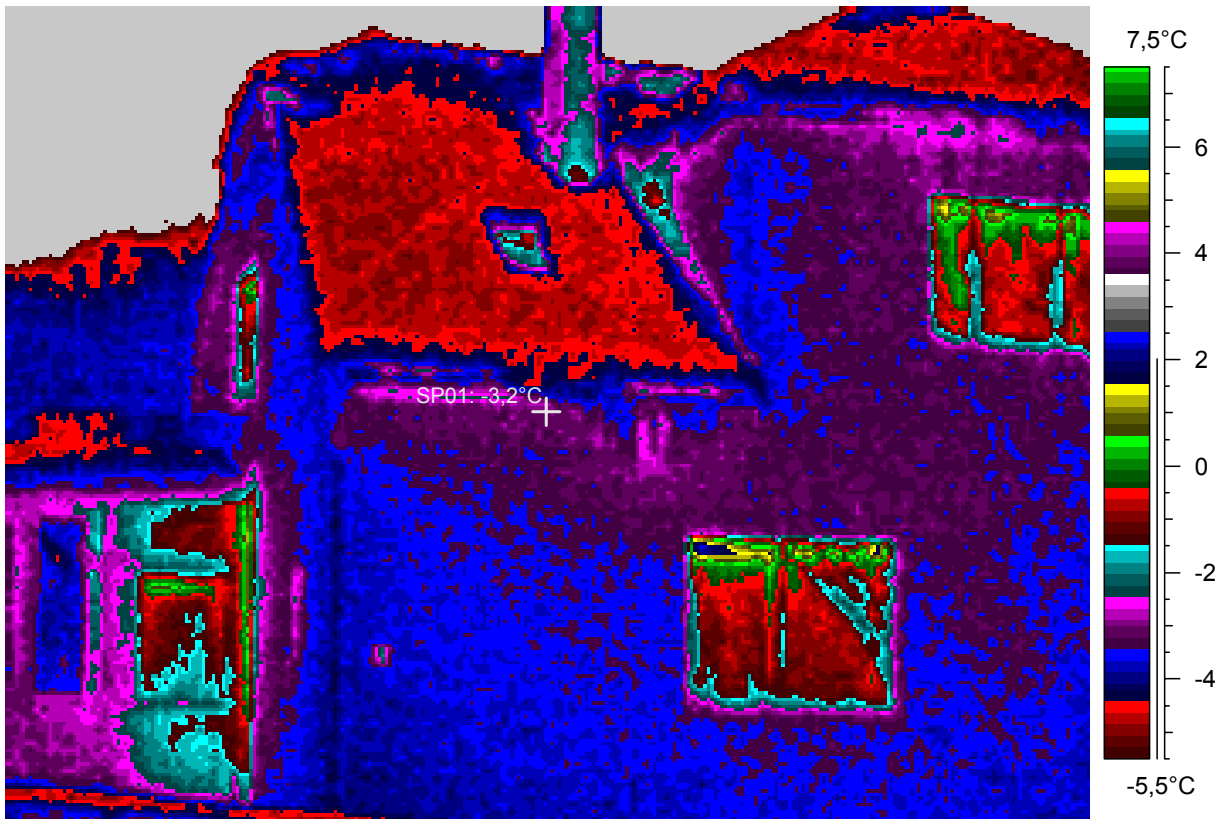
blabla

11 - Ir_1924.jpg

Label	Value
IR : max	2,5°C
IR : min	-9,5°C
SP01	-3,2°C

19.2.2005

22:12:59



comments:

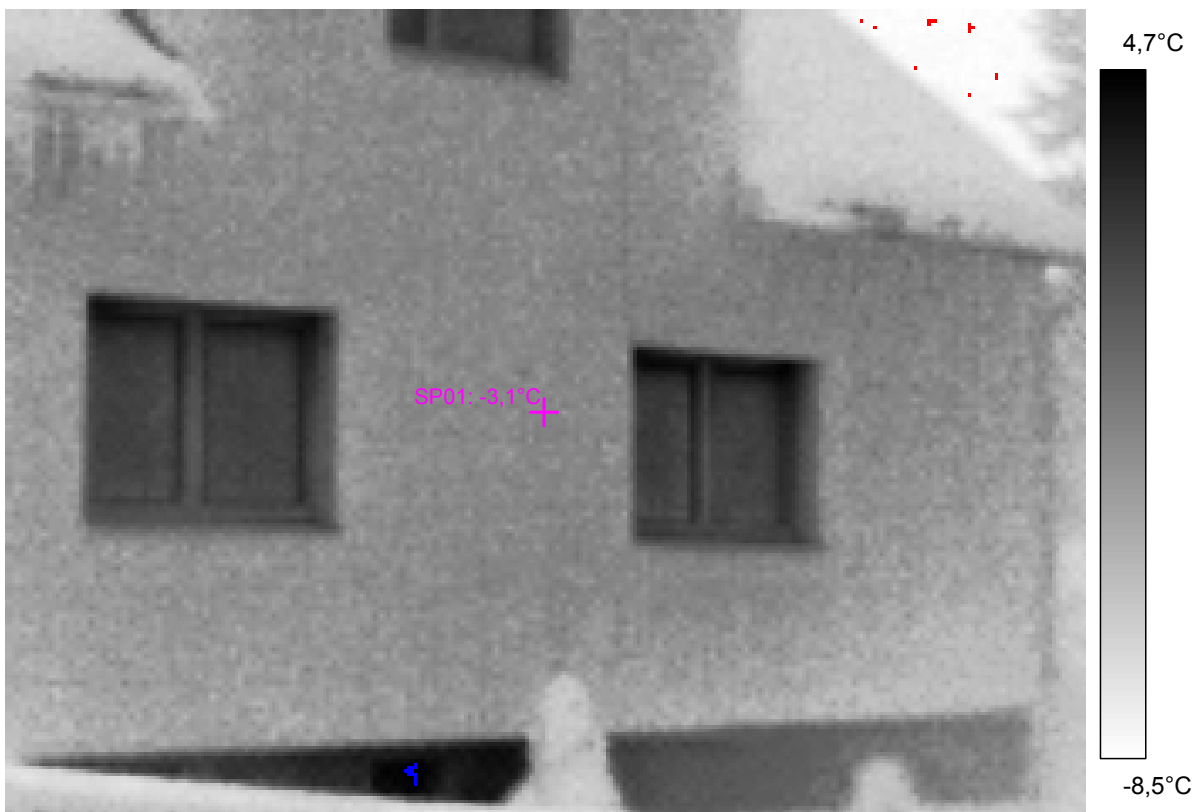
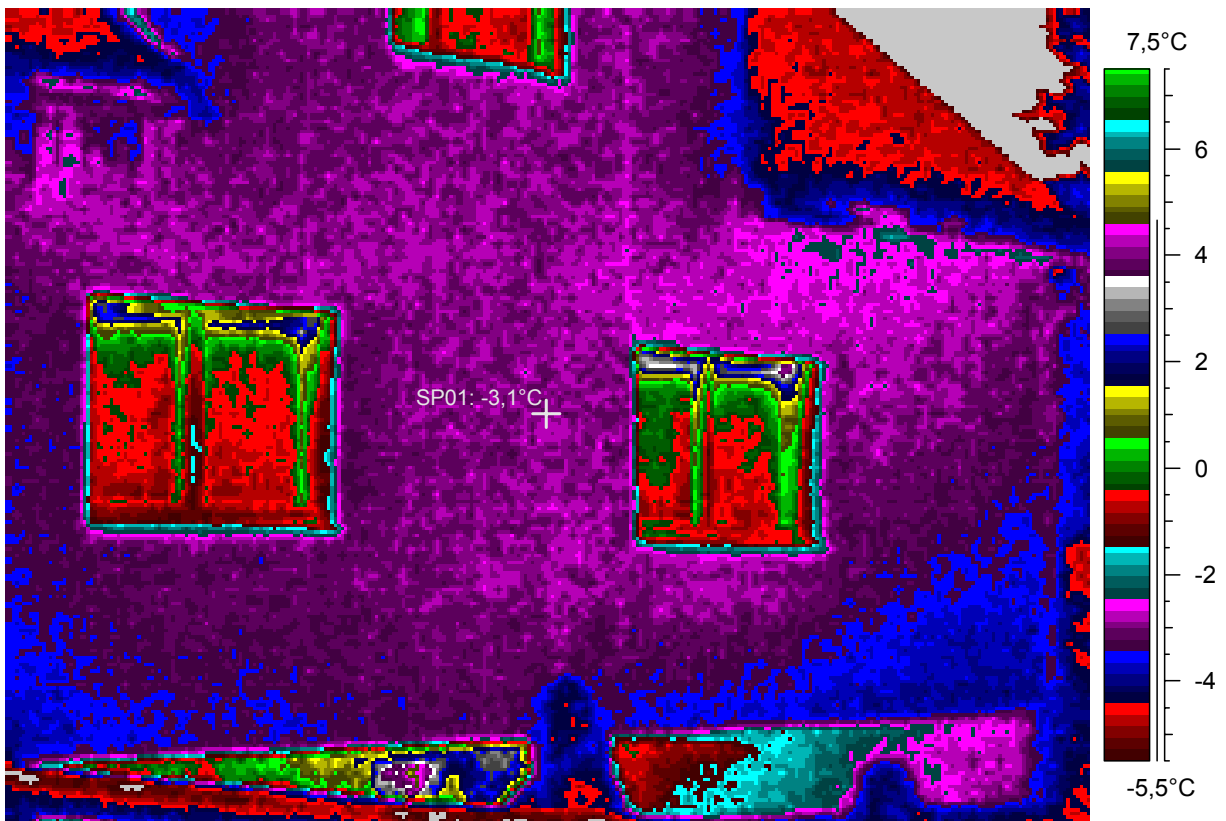
blabla

12 - Ir_1925.jpg

Label	Value
IR : max	5,3°C
IR : min	-8,7°C
SP01	-3,1°C

19.2.2005

22:13:49



comments:

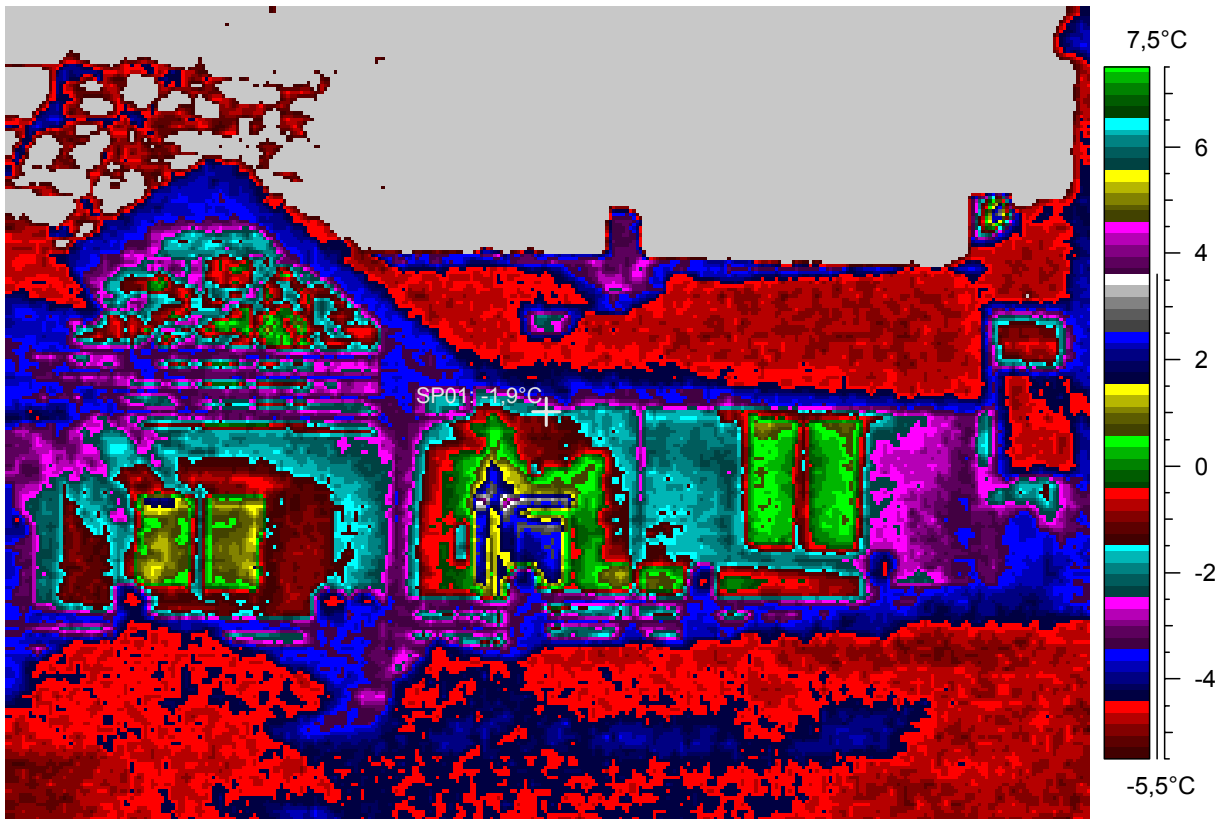
blabla

13 - Ir_1926.jpg

Label	Value
IR : max	4,8°C
IR : min	-9,3°C
SP01	-1,9°C

19.2.2005

22:15:18



comments:

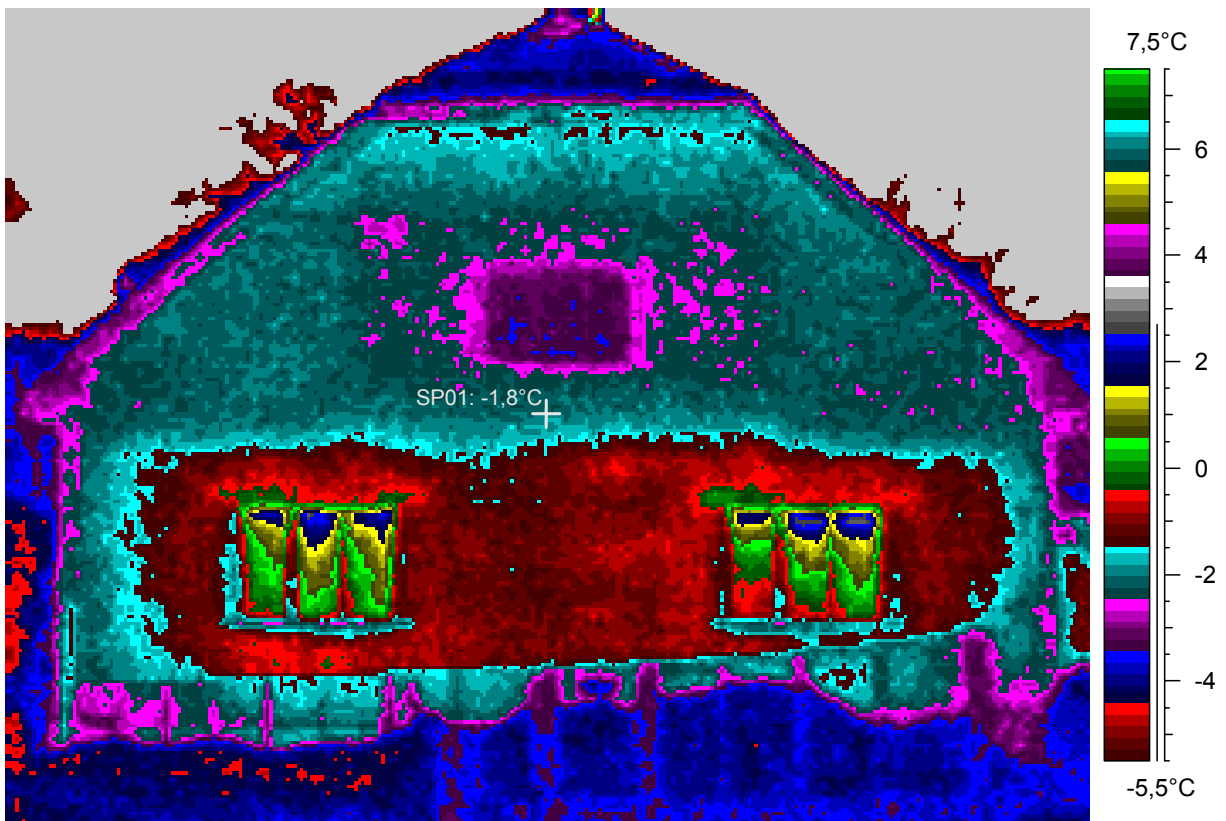
blabla

14 - Ir_1927.jpg

Label	Value
IR : max	2,9°C
IR : min	-9,0°C
SP01	-1,8°C

19.2.2005

22:18:48



comments:

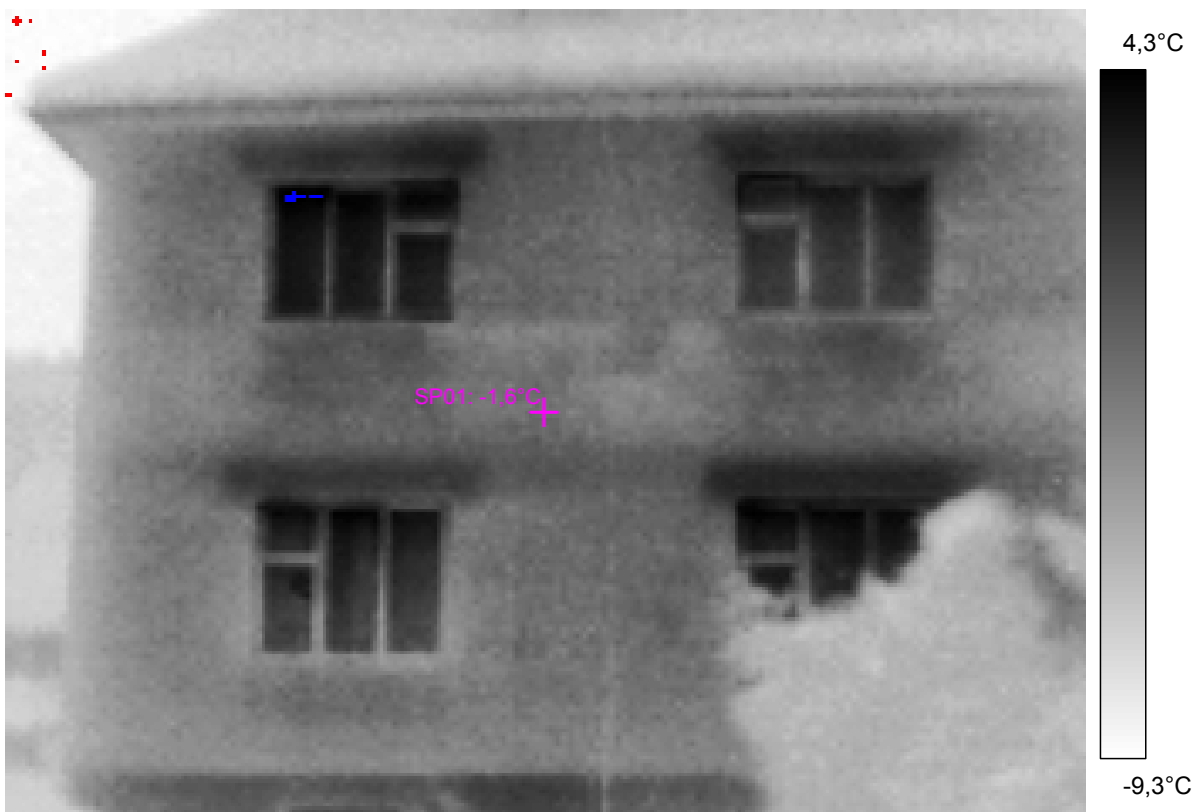
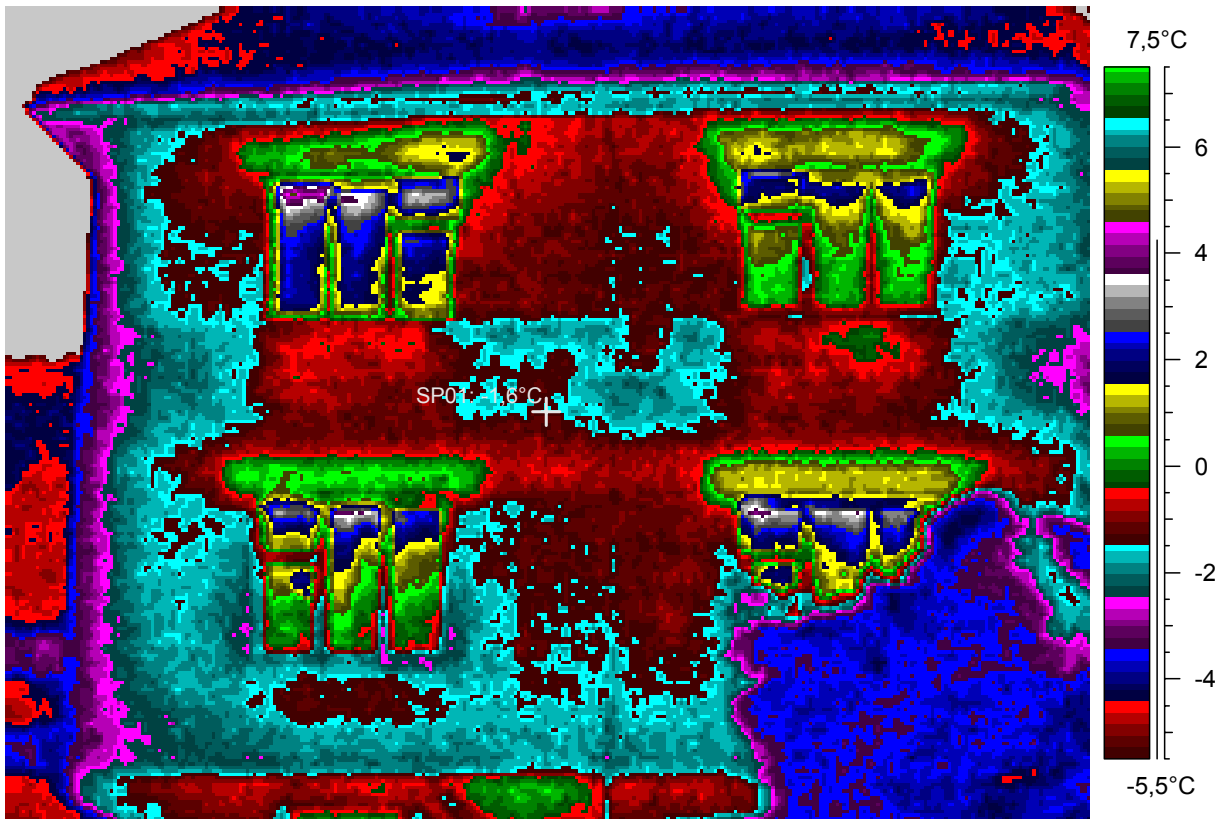
blabla

15 - Ir_1928.jpg

Label	Value
IR : max	4,8°C
IR : min	-9,6°C
SP01	-1,6°C

19.2.2005

22:22:39



comments:

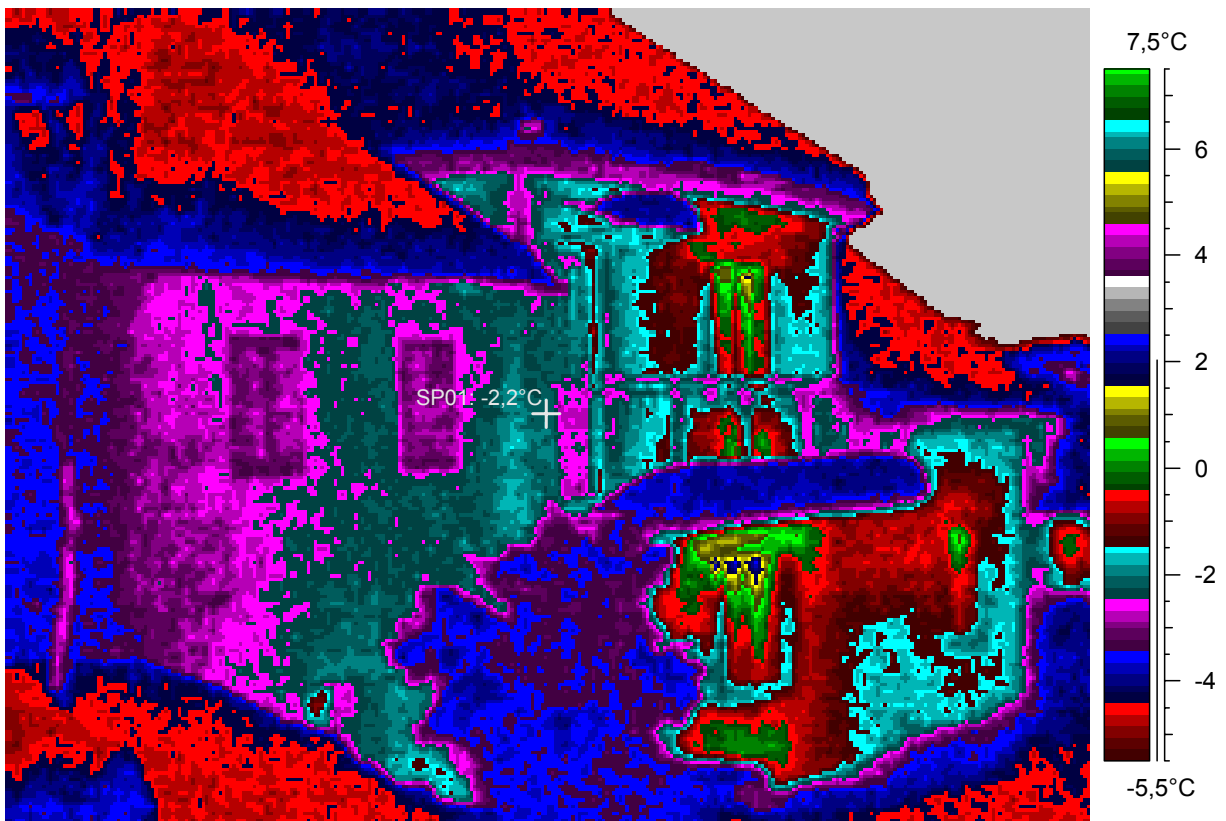
blabla

16 - Ir_1929.jpg

Label	Value
IR : max	2,6°C
IR : min	-8,3°C
SP01	-2,2°C

19.2.2005

22:23:51



comments:

blabla

17 - *

Label	Value
IR : max	48,4°C
IR : min	29,8°C

27.10.1999

15:50:30

