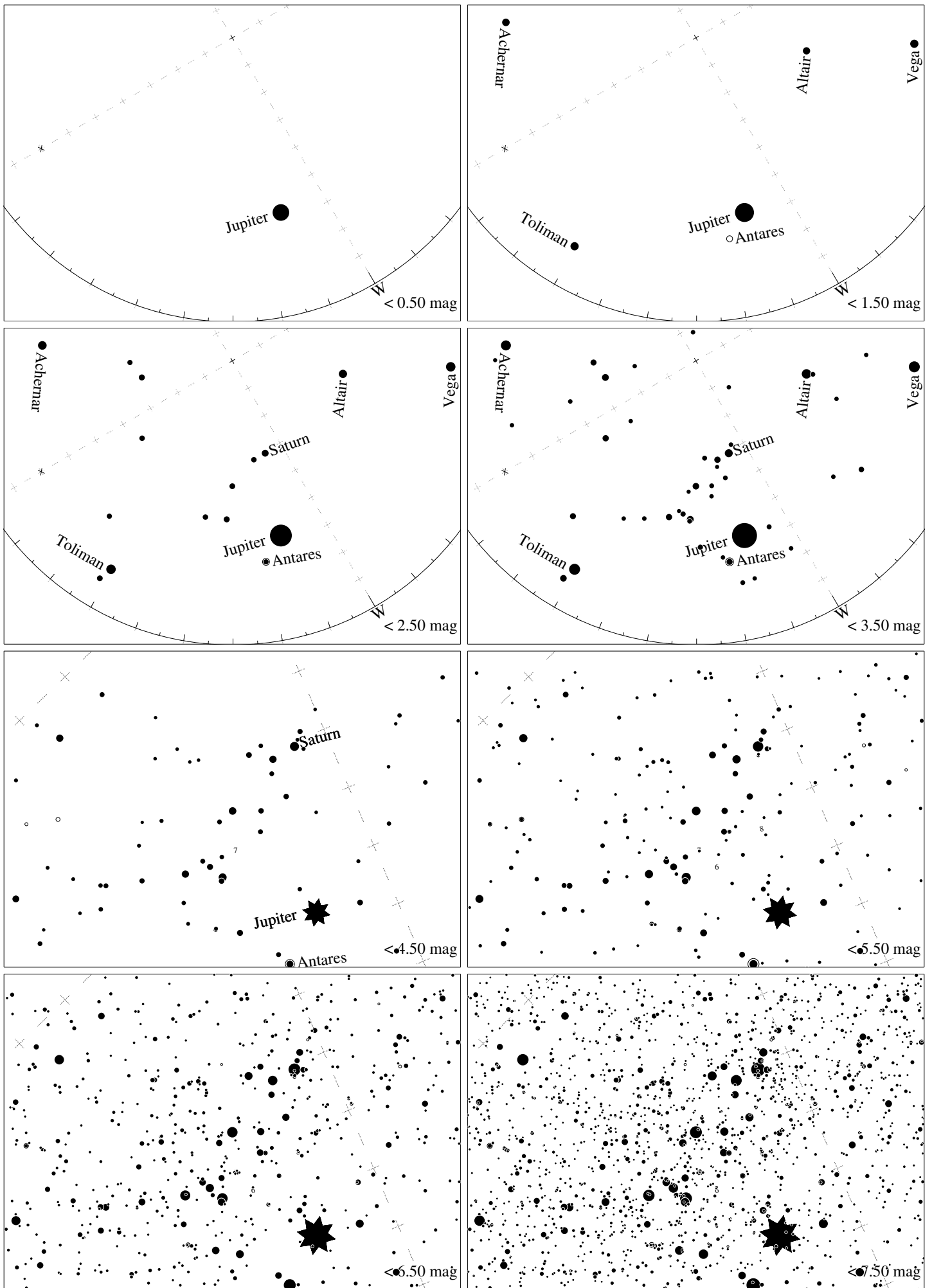


Maps for Globe at Night latitude  $-20^\circ$ , 2019-08-26, 21 h local time (Sun at  $-45^\circ$ ), transparent air. Lines from N(E,S,W) to zenith shown (crosses each  $10^\circ$ ). Centered on Kaus Australis ( $\epsilon$  Sagittarii), which is  $37^\circ$  to the right from S, at  $71^\circ$  height. Detailed maps  $50^\circ$  vertically, the first four maps  $100^\circ$ . *Jan Hollan, CzechGlobe*



Maps for Globe at Night latitude  $-20^\circ$ , 2019-09-24, 21 h local time (Sun at  $-43^\circ$ ), transparent air. Lines from N(E,S,W) to zenith shown (crosses each  $10^\circ$ ). Centered on Kaus Australis ( $\epsilon$  Sagittarii), which is  $60^\circ$  to the right from S, at  $50^\circ$  height. Detailed maps  $50^\circ$  vertically, the first four maps  $100^\circ$ . *Jan Hollan, CzechGlobe*