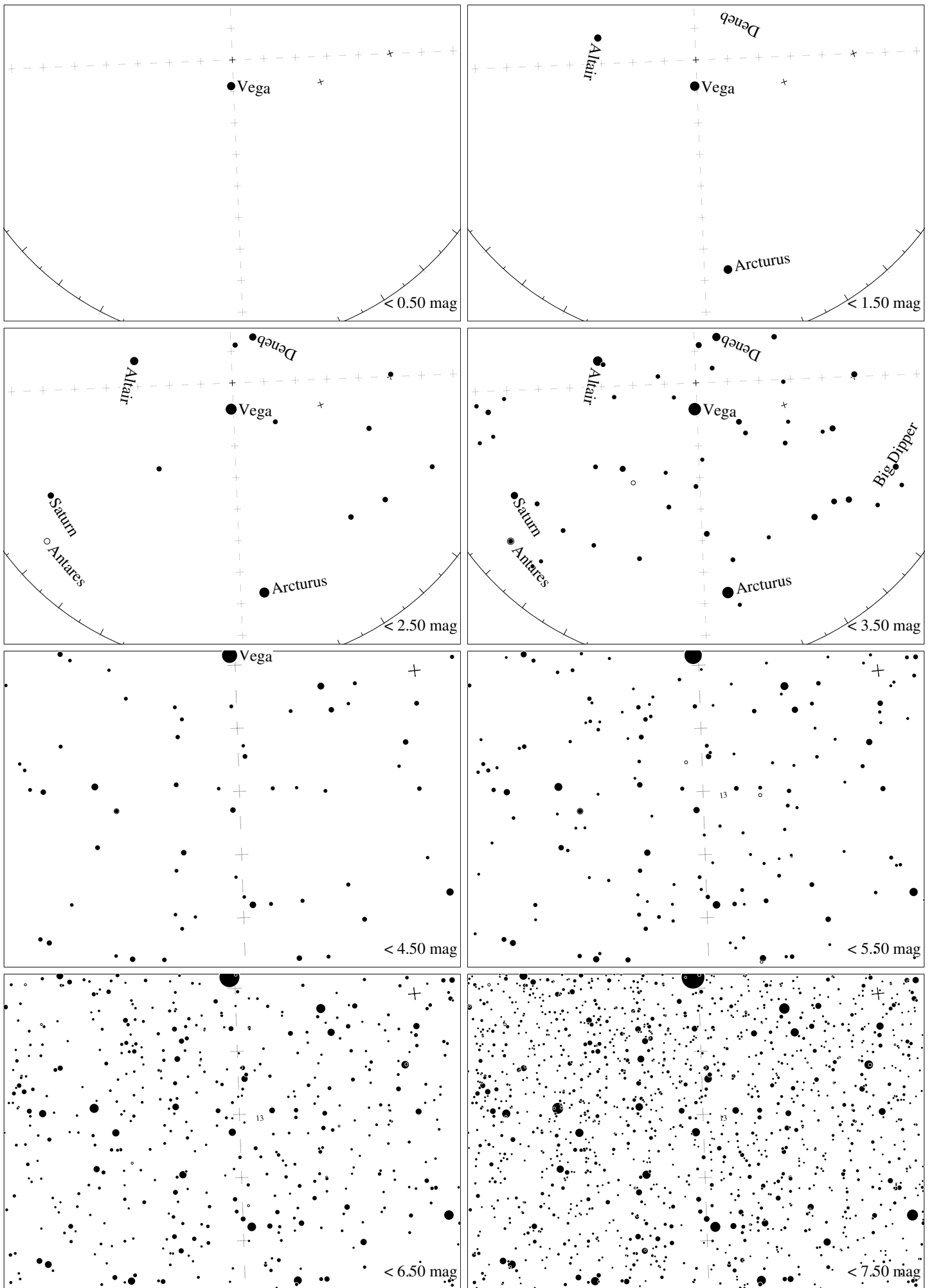
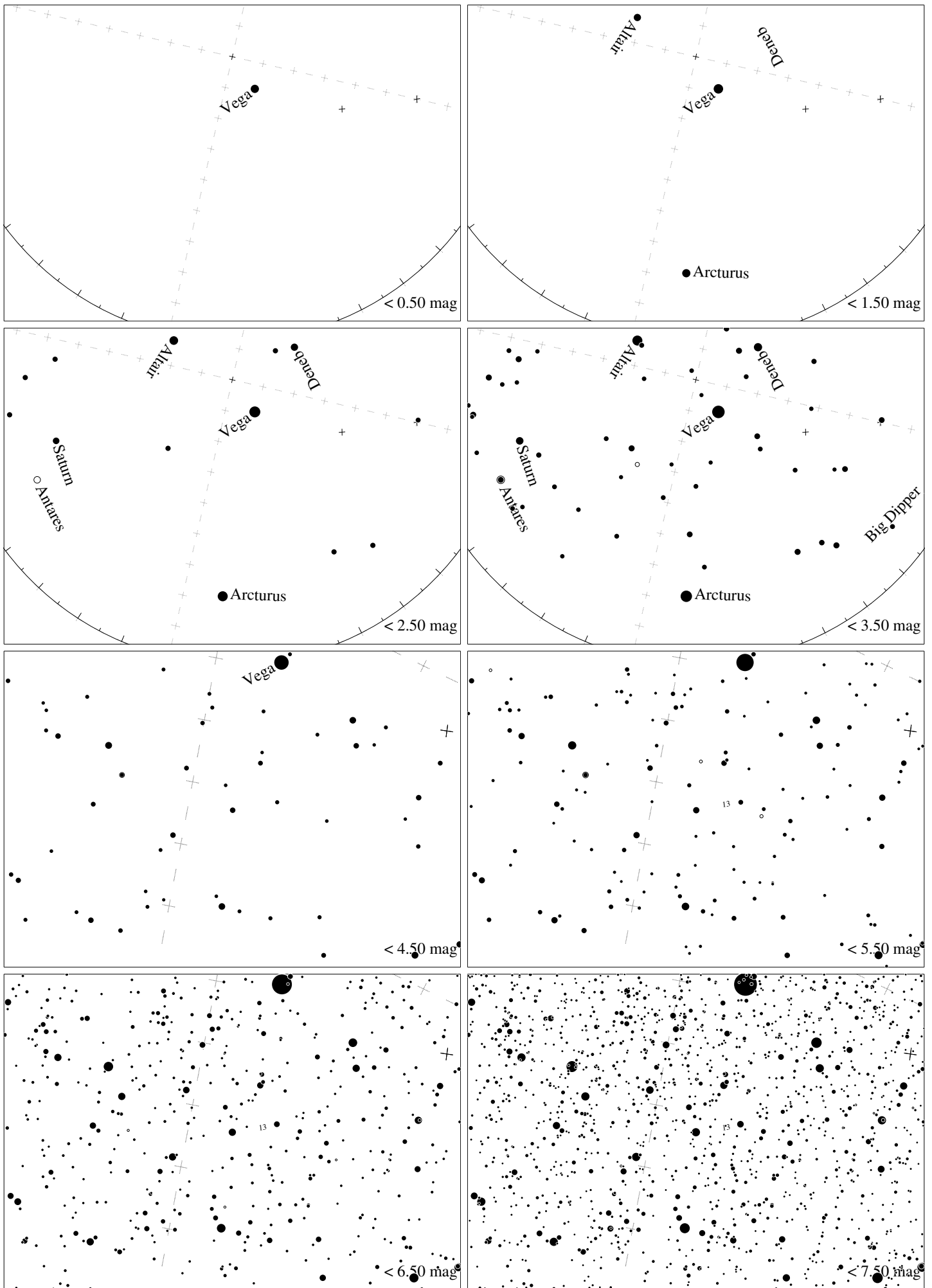


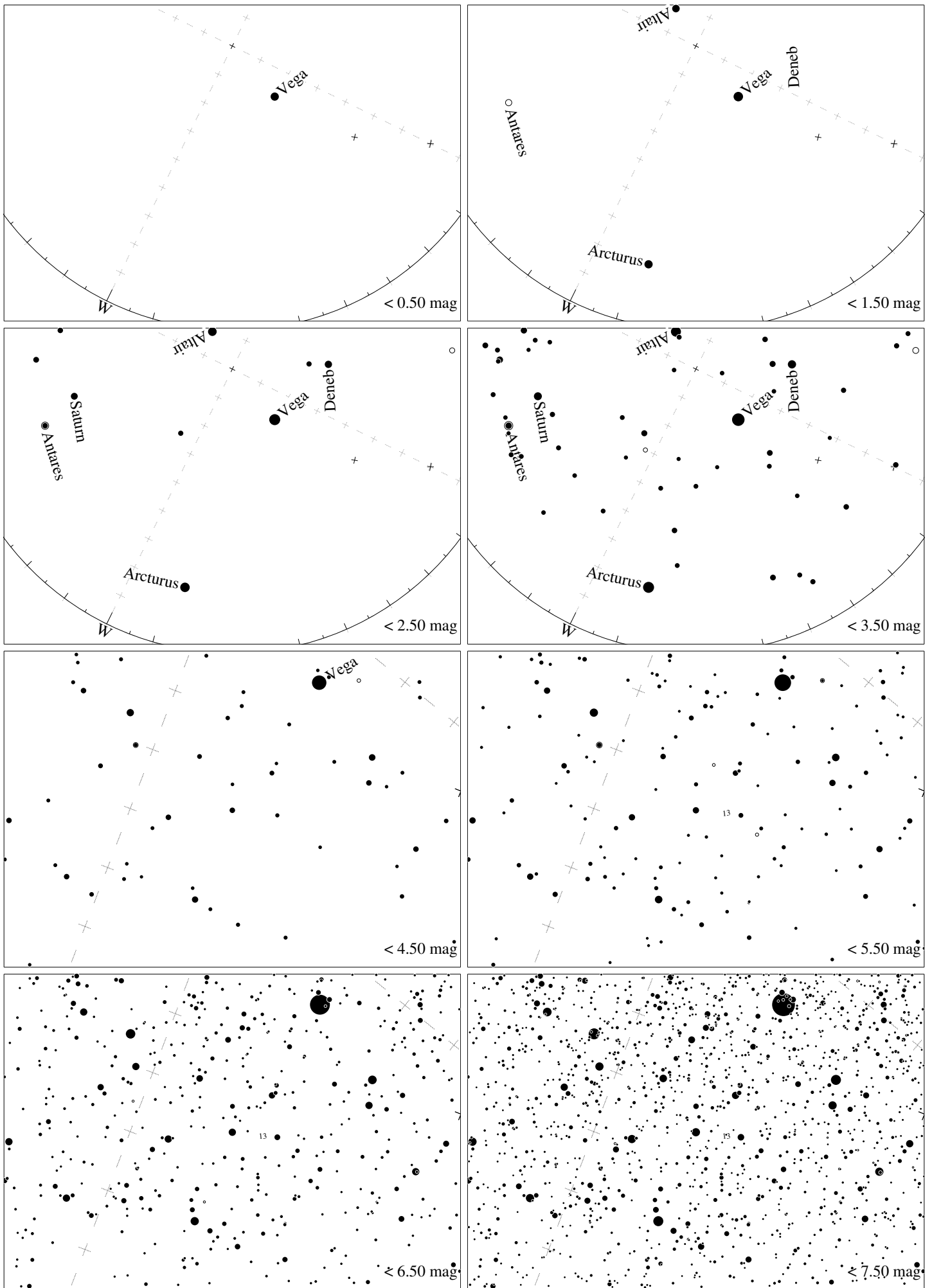
Maps for Globe at Night latitude 50° , 2017-08-18, 21:30 local time (Sun at -19°), transparent air. Lines from N(E,S,W) to zenith shown (crosses each 10°). Centered on ζ Herculis, which is 73° to the right from S, at 55° height. Detailed maps 50° vertically, the first four maps 100° . *Jan Hollan, CzechGlobe*



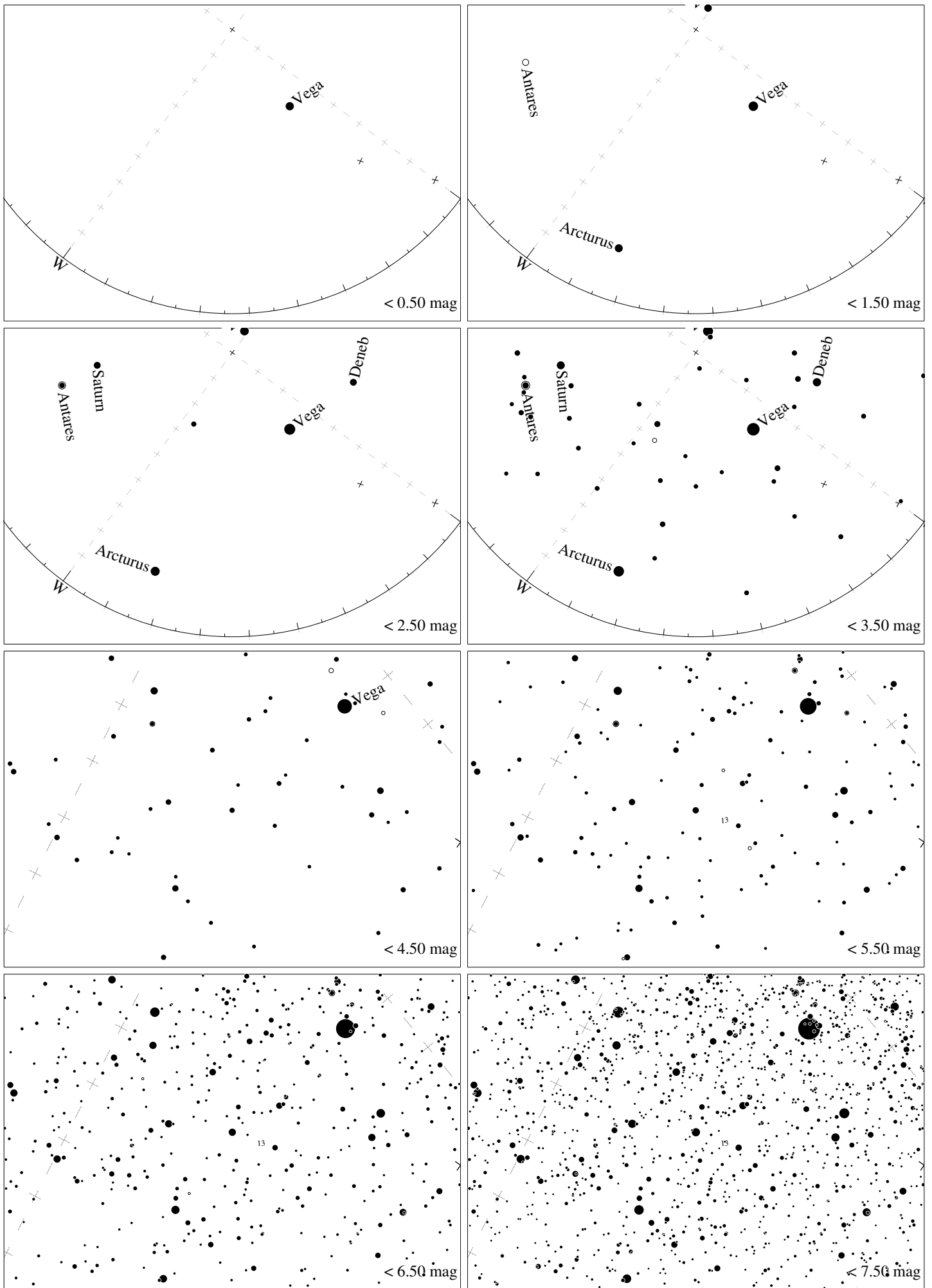
Maps for Globe at Night latitude 40° , 2017-08-18, 21:30 local time (Sun at -26°), transparent air. Lines from N(E,S,W) to zenith shown (crosses each 10°). Centered on ζ Herculis, which is 88° to the right from S, at 57° height. Detailed maps 50° vertically, the first four maps 100° . *Jan Hollan, CzechGlobe*



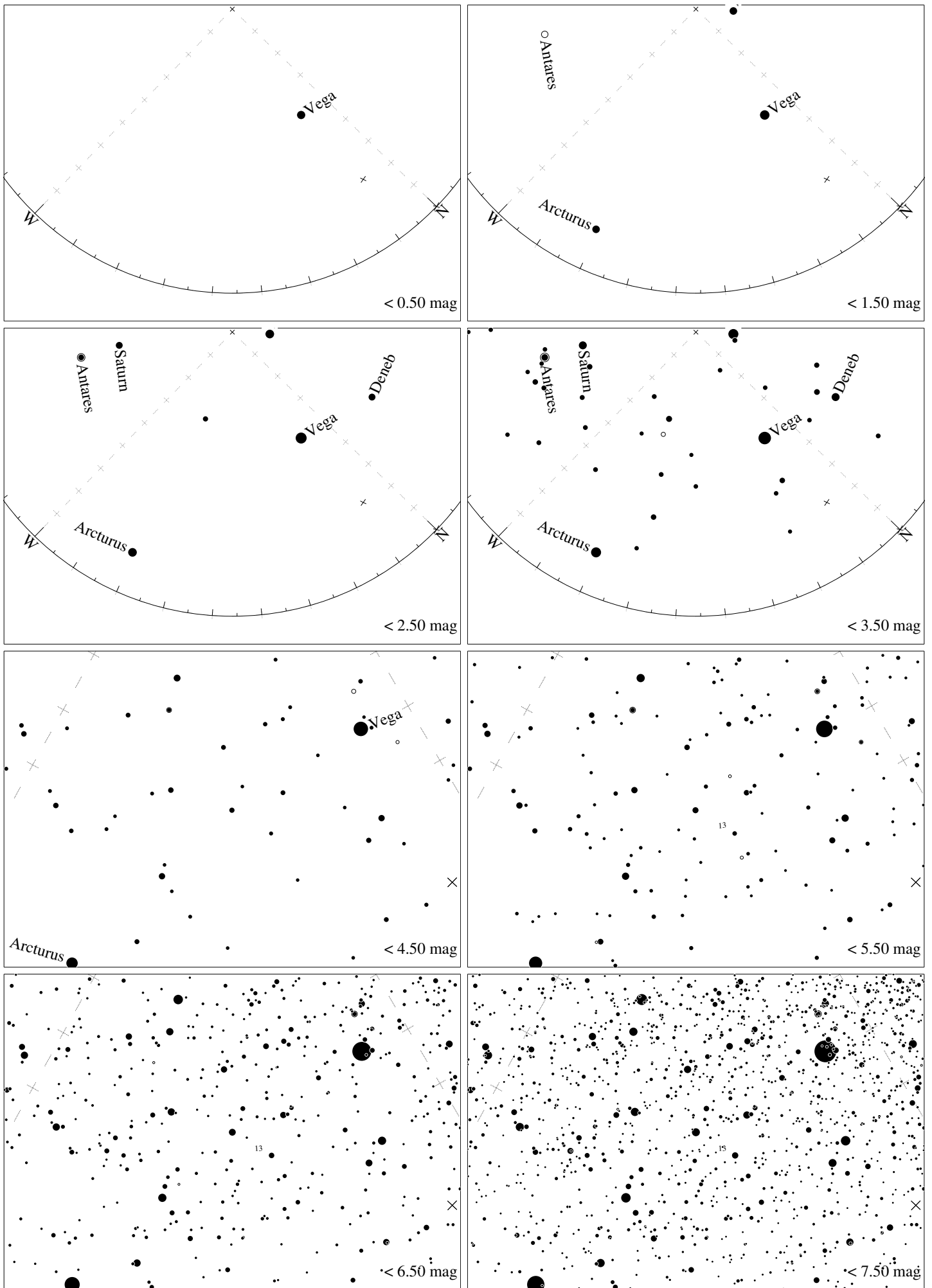
Maps for Globe at Night latitude 30° , 2017-08-18, 21:30 local time (Sun at -33°), transparent air. Lines from N(E,S,W) to zenith shown (crosses each 10°). Centered on ζ Herculis, which is 77° to the left from N, at 56° height. Detailed maps 50° vertically, the first four maps 100° . *Jan Hollan, CzechGlobe*



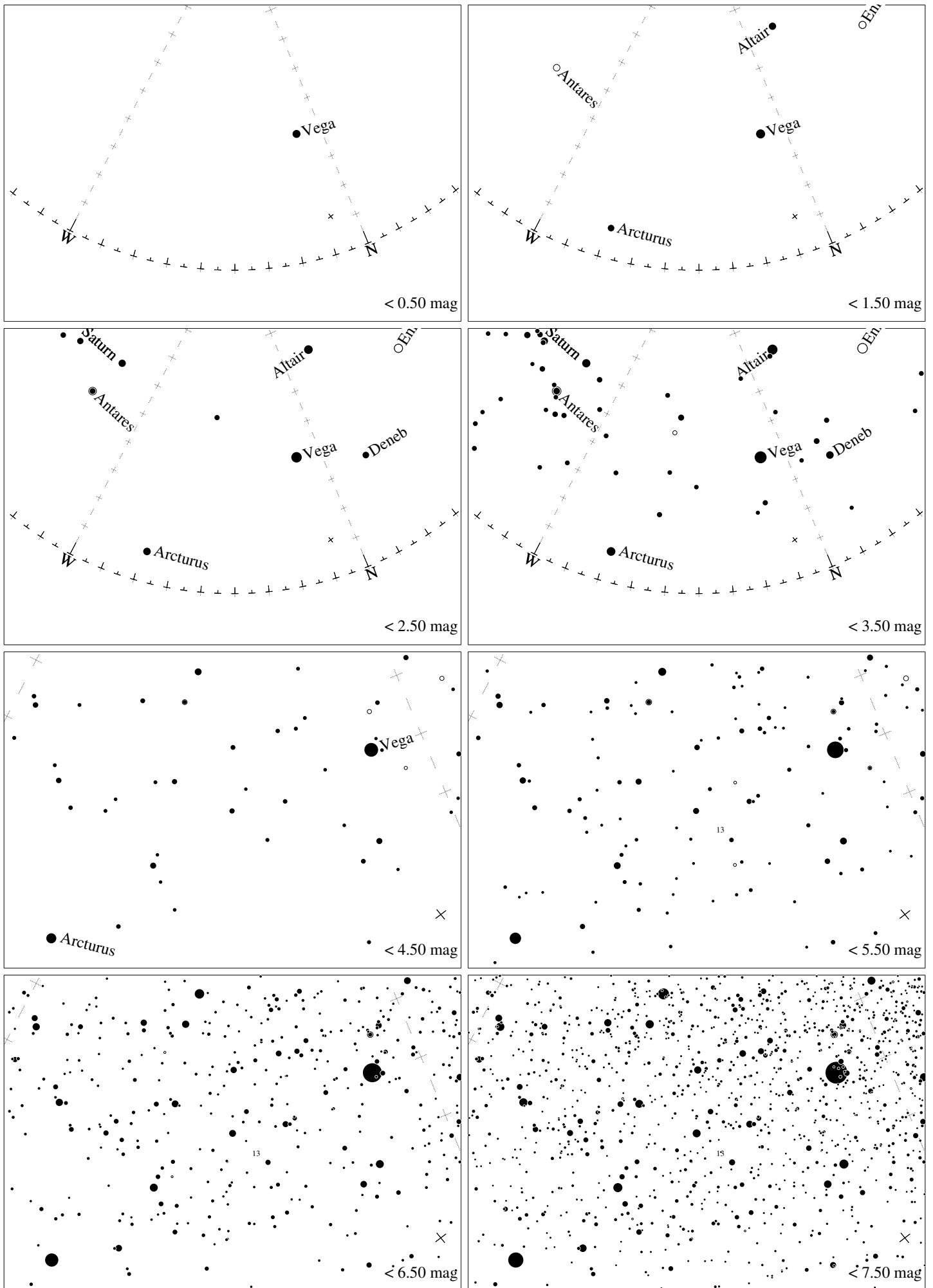
Maps for Globe at Night latitude 20° , 2017-08-18, 21:30 local time (Sun at -40°), transparent air. Lines from N(E,S,W) to zenith shown (crosses each 10°). Centered on ζ Herculis, which is 64° to the left from N, at 53° height. Detailed maps 50° vertically, the first four maps 100° . *Jan Hollan, CzechGlobe*



Maps for Globe at Night latitude 10° , 2017-08-18, 21:30 local time (Sun at -46°), transparent air. Lines from N(E,S,W) to zenith shown (crosses each 10°). Centered on ζ Herculis, which is 53° to the left from N, at 48° height. Detailed maps 50° vertically, the first four maps 100° . *Jan Hollan, CzechGlobe*



Maps for Globe at Night latitude 0° , 2017-08-18, 21:30 local time (Sun at -50°), transparent air. Lines from N(E,S,W) to zenith shown (crosses each 10°). Centered on ζ Herculis, which is 46° to the left from N, at 41° height. Detailed maps 50° vertically, the first four maps 100° . *Jan Hollan, CzechGlobe*



Maps for Globe at Night latitude -10° , 2017-08-18, 21:30 local time (Sun at -52°), transparent air. Lines from N(E,S,W) to zenith shown (crosses each 10°). Centered on ζ Herculis, which is 41° to the left from N, at 34° height. Detailed maps 50° vertically, the first four maps 100° . *Jan Hollan, CzechGlobe*