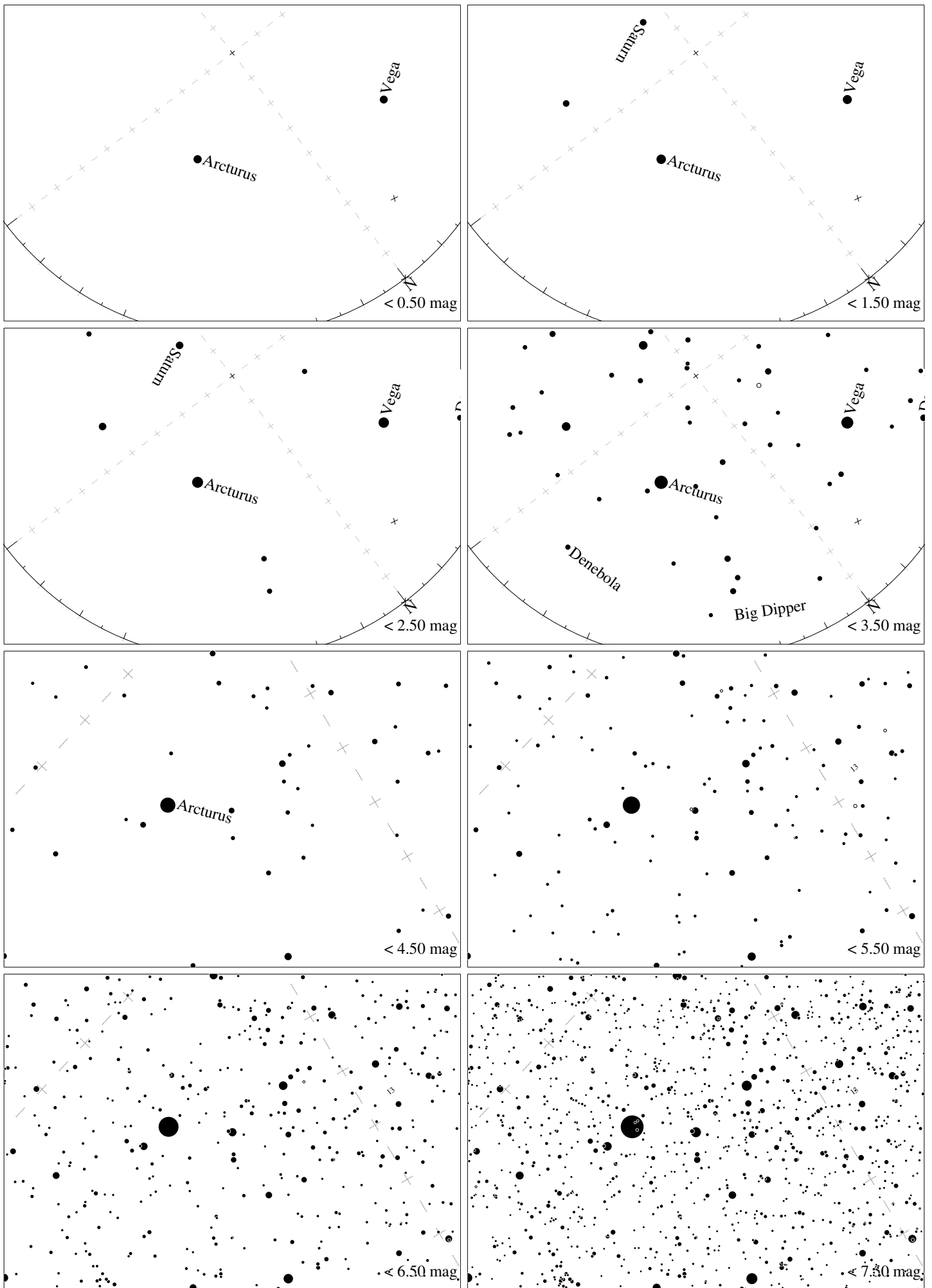


Maps for Globe at Night latitude 0° , 2015-06-12, 21 h local time (Sun at -41°), transparent air. Lines from N(E,S,W) to zenith shown (crosses each 10°). Centered on Izar (ϵ Bootis), which is 11° to the right from N, at 62° height. Detailed maps 50° vertically, the first four maps 100° . *Jan Hollan, CzechGlobe*



Maps for Globe at Night latitude 0° , 2015-07-13, 21 h local time (Sun at -40°), transparent air. Lines from N(E,S,W) to zenith shown (crosses each 10°). Centered on Izar (ϵ Bootis), which is 38° to the left from N, at 55° height. Detailed maps 50° vertically, the first four maps 100° . *Jan Hollan, CzechGlobe*