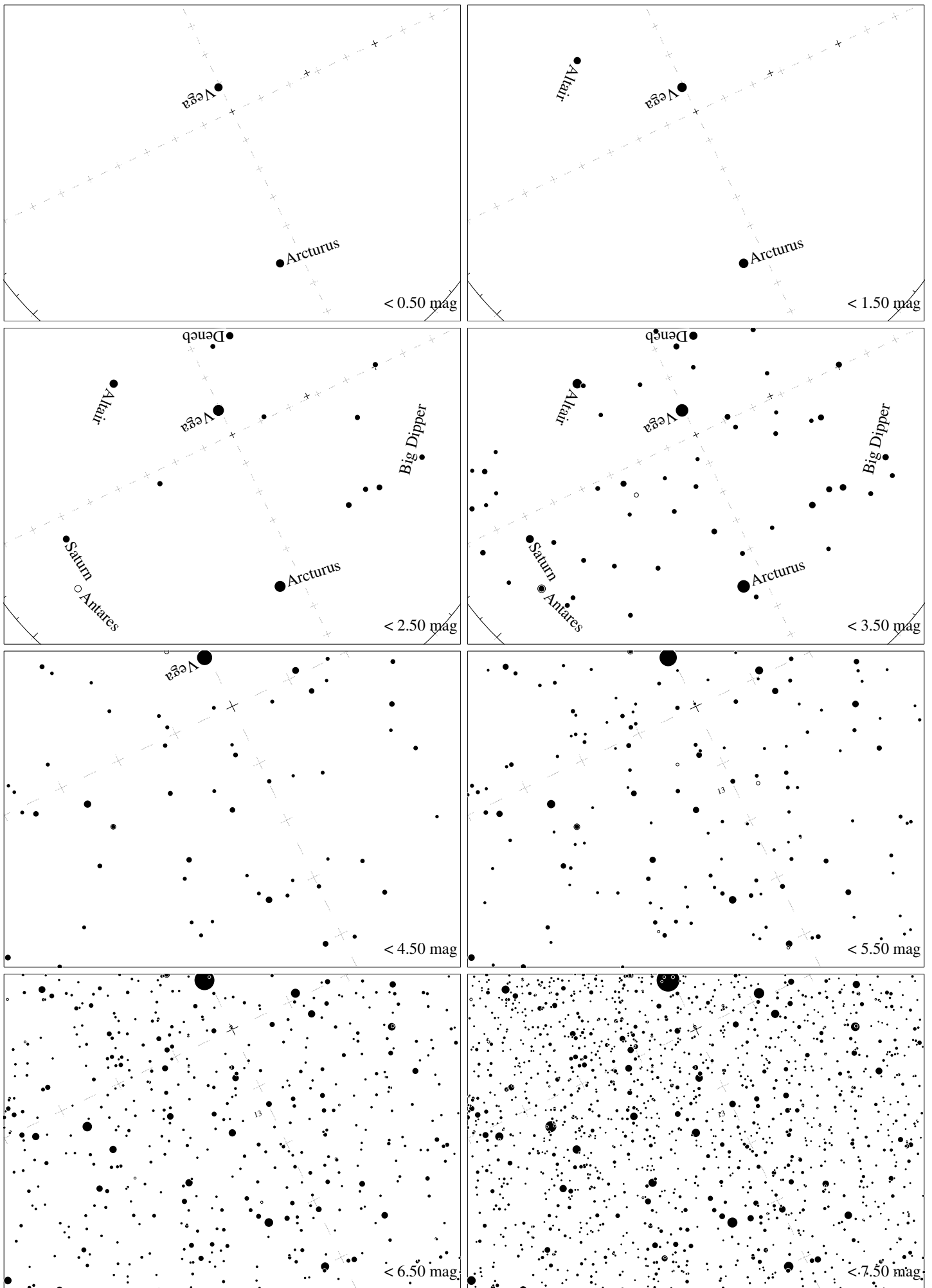
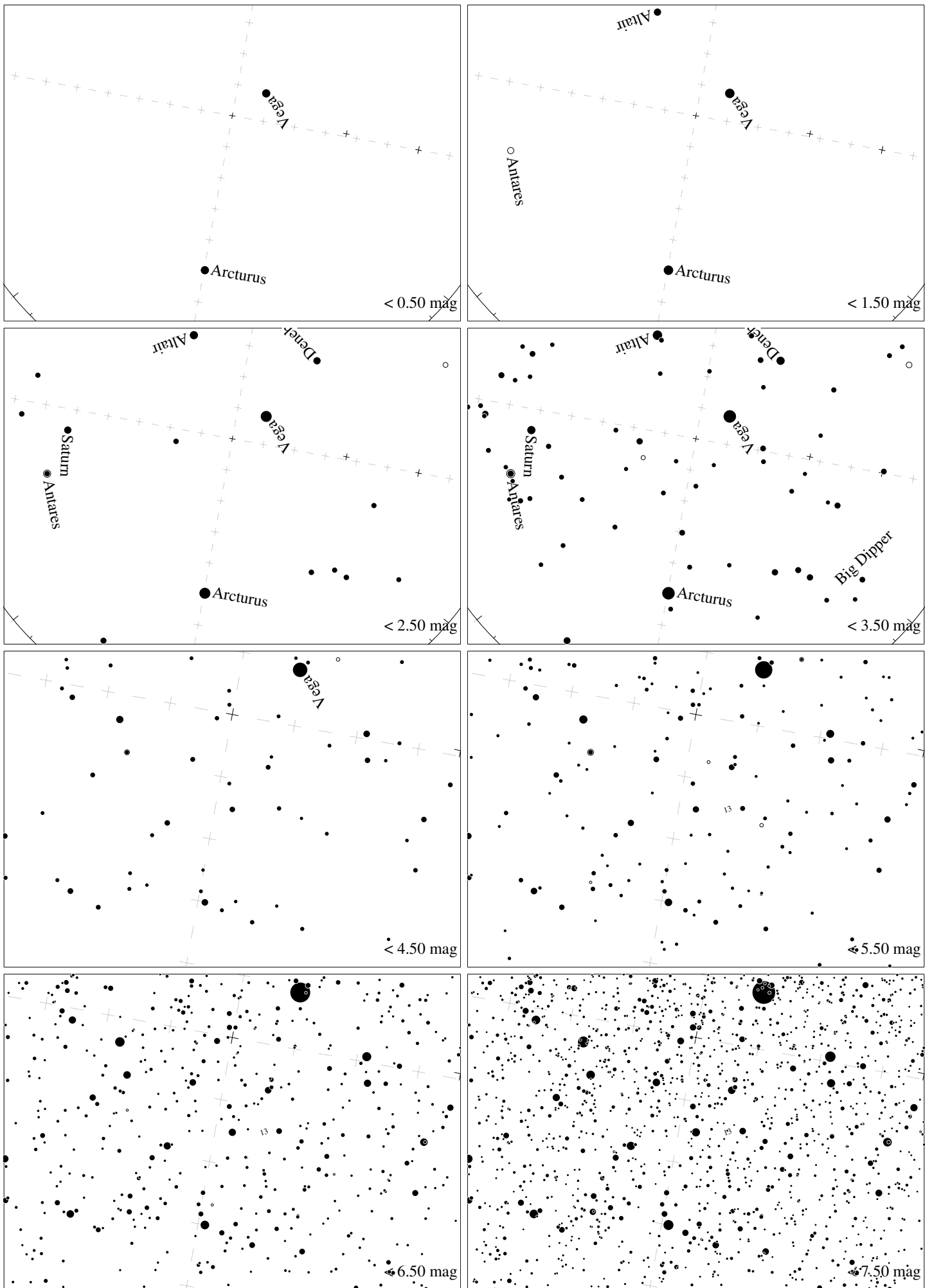


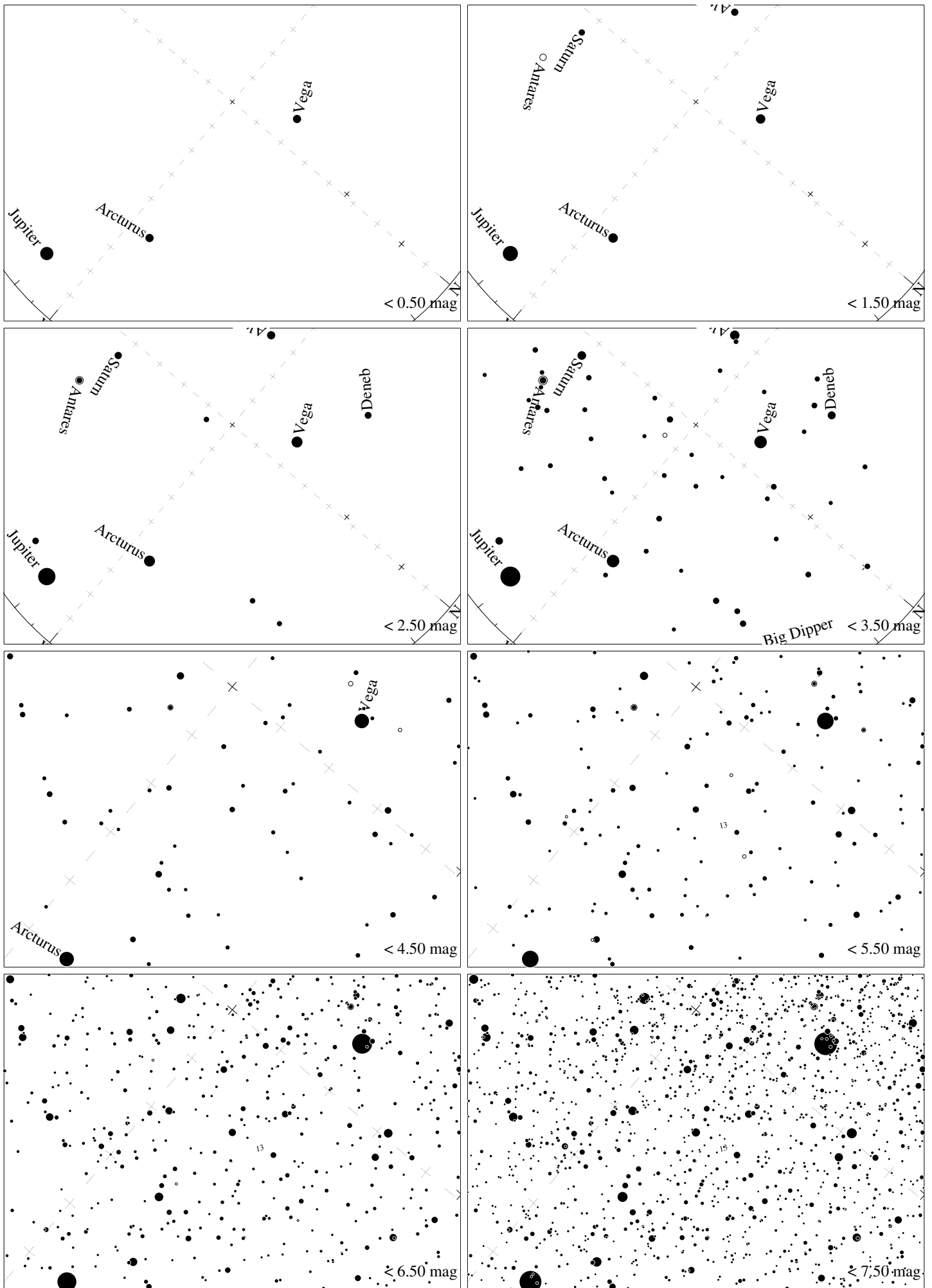
Maps for Globe at Night latitude 50° , 2017-07-19, 22 h local time (Sun at -14°), transparent air. Lines from N(E,S,W) to zenith shown (crosses each 10°). Centered on ζ Herculis, which is 42° to the right from S, at 67° height. Detailed maps 50° vertically, the first four maps 100° . *Jan Hollan, CzechGlobe*



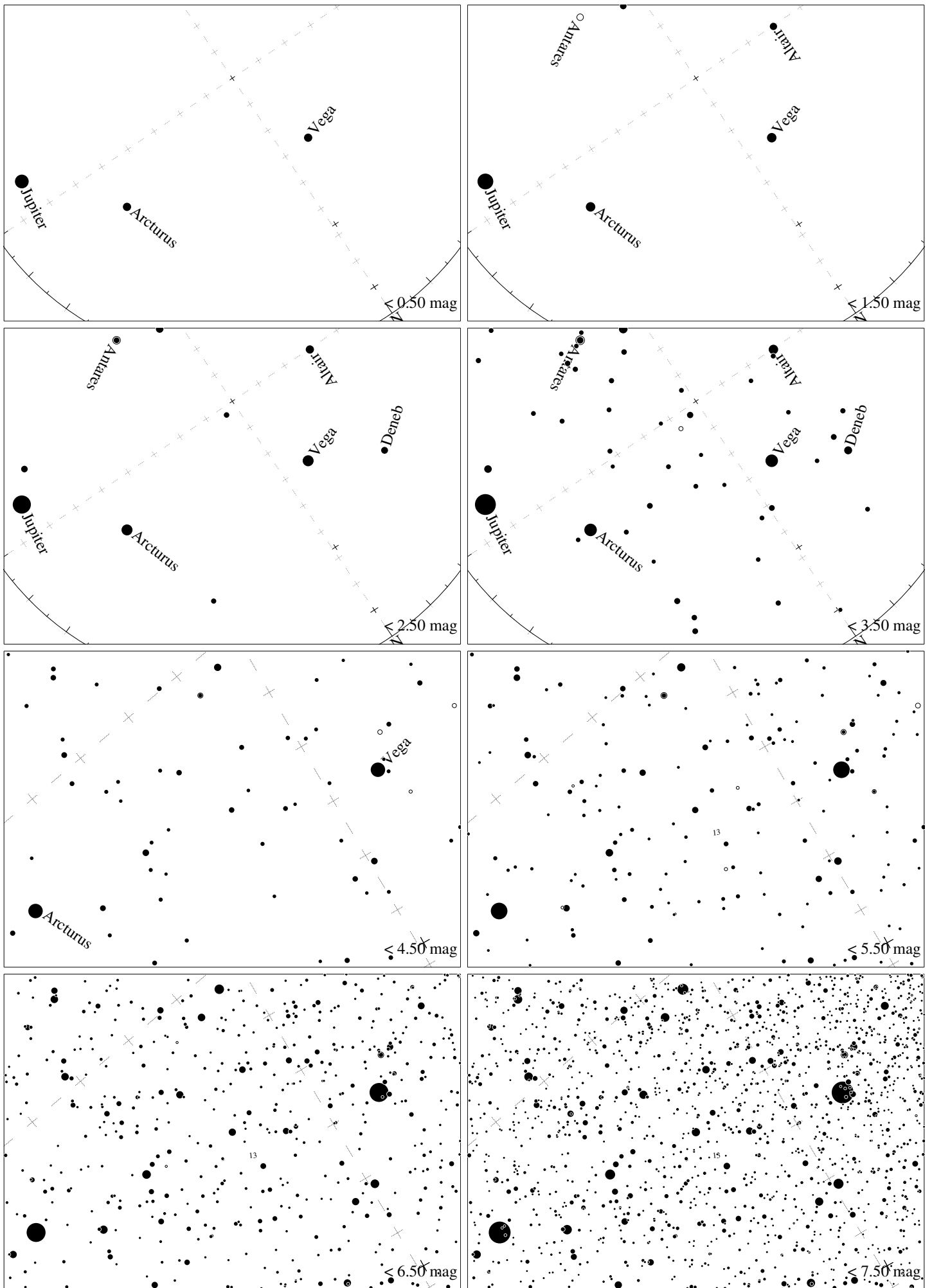
Maps for Globe at Night latitude 40° , 2017-07-19, 22 h local time (Sun at -23°), transparent air. Lines from N(E,S,W) to zenith shown (crosses each 10°). Centered on ζ Herculis, which is 64° to the right from S, at 74° height. Detailed maps 50° vertically, the first four maps 100° . *Jan Hollan, CzechGlobe*



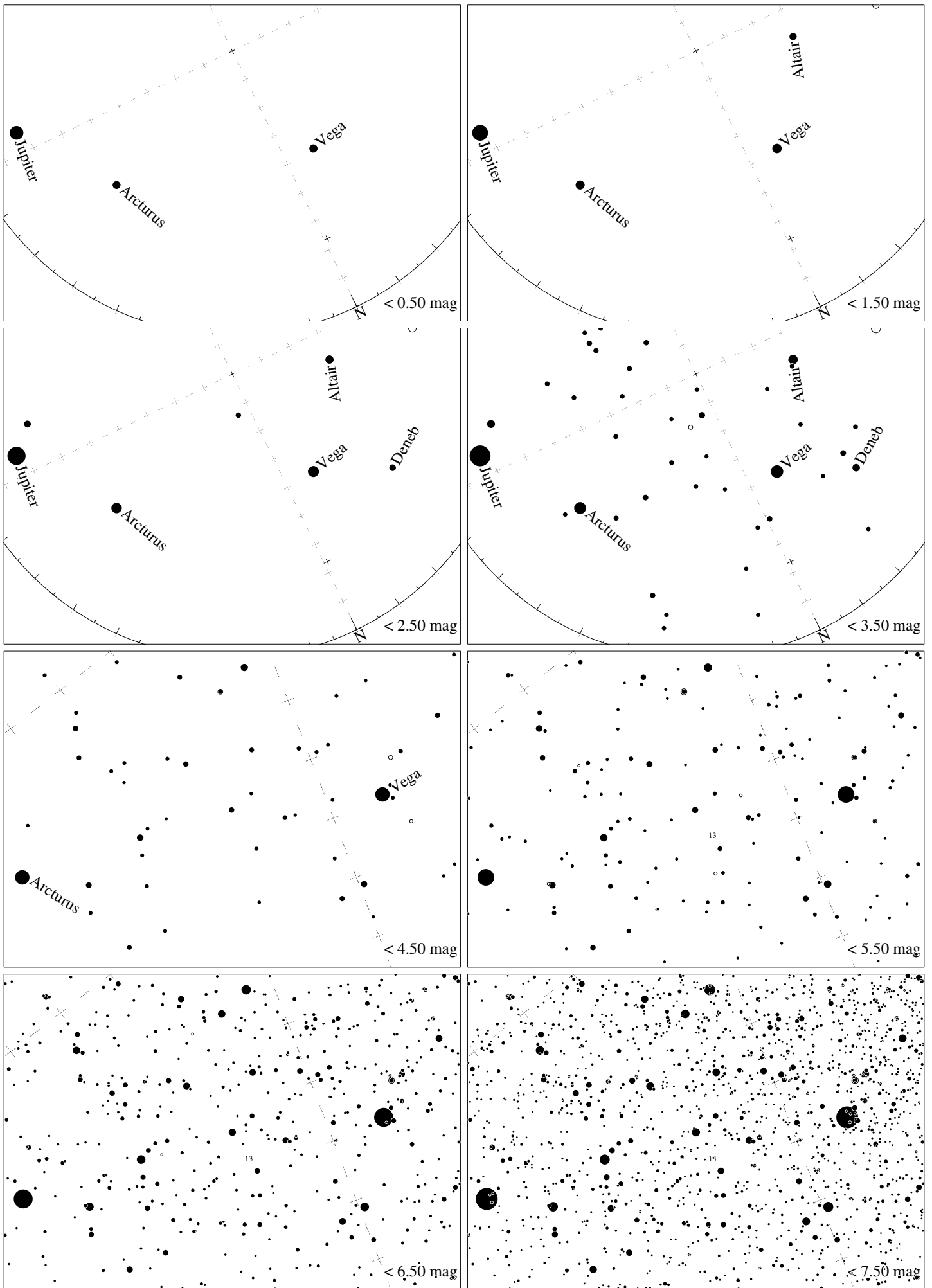
Maps for Globe at Night latitude 30° , 2017-07-19, 22 h local time (Sun at -31°), transparent air. Lines from N(E,S,W) to zenith shown (crosses each 10°). Centered on ζ Herculis, which is 80° to the left from N, at 75° height. Detailed maps 50° vertically, the first four maps 100° . *Jan Hollan, CzechGlobe*



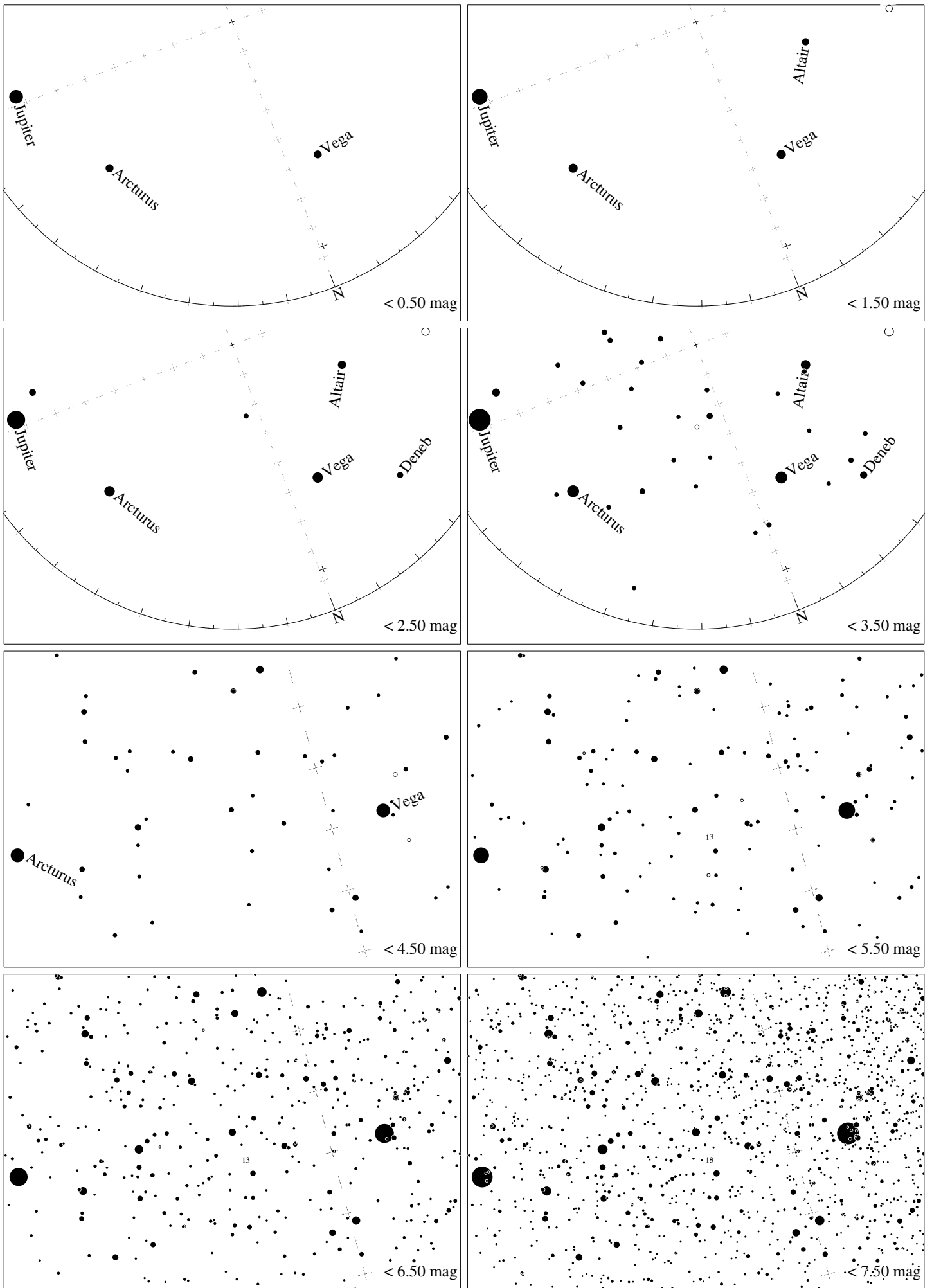
Maps for Globe at Night latitude 20° , 2017-07-19, 22 h local time (Sun at -39°), transparent air. Lines from N(E,S,W) to zenith shown (crosses each 10°). Centered on ζ Herculis, which is 50° to the left from N, at 71° height. Detailed maps 50° vertically, the first four maps 100° . *Jan Hollan, CzechGlobe*



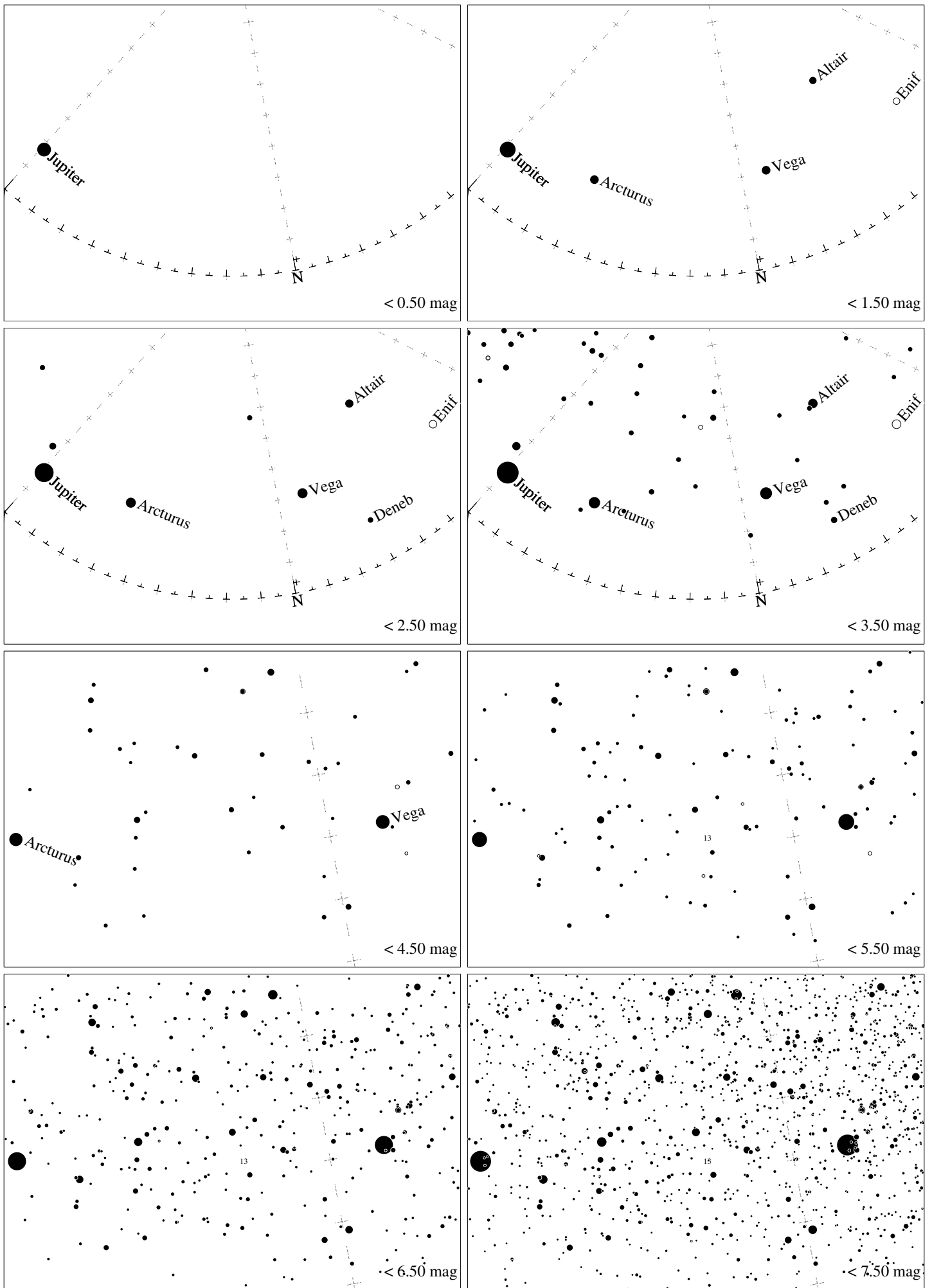
Maps for Globe at Night latitude 10° , 2017-07-19, 22 h local time (Sun at -46°), transparent air. Lines from N(E,S,W) to zenith shown (crosses each 10°). Centered on ζ Herculis, which is 34° to the left from N, at 63° height. Detailed maps 50° vertically, the first four maps 100° . *Jan Hollan, CzechGlobe*



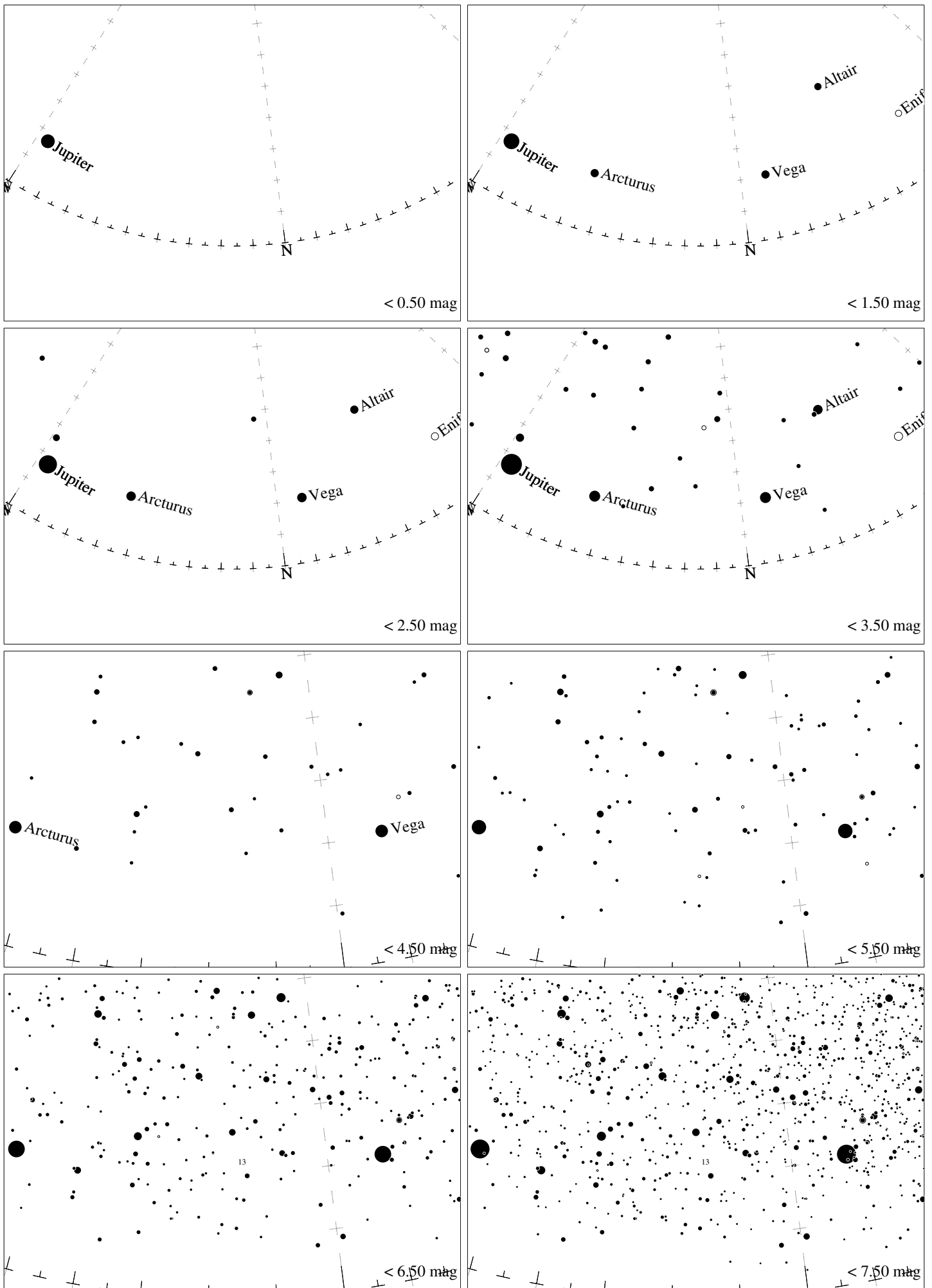
Maps for Globe at Night latitude 0° , 2017-07-19, 22 h local time (Sun at -53°), transparent air. Lines from N(E,S,W) to zenith shown (crosses each 10°). Centered on ζ Herculis, which is 26° to the left from N, at 54° height. Detailed maps 50° vertically, the first four maps 100° . *Jan Hollan, CzechGlobe*



Maps for Globe at Night latitude -10° , 2017-07-19, 22 h local time (Sun at -58°), transparent air. Lines from N(E,S,W) to zenith shown (crosses each 10°). Centered on ζ Herculis, which is 21° to the left from N, at 45° height. Detailed maps 50° vertically, the first four maps 100° . *Jan Hollan, CzechGlobe*



Maps for Globe at Night latitude -20° , 2017-07-19, 22 h local time (Sun at -60°), transparent air. Lines from N(E,S,W) to zenith shown (crosses each 10°). Centered on ζ Herculis, which is 18° to the left from N, at 36° height. Detailed maps 50° vertically, the first four maps 100° . *Jan Hollan, CzechGlobe*



Maps for Globe at Night latitude -30° , 2017-07-19, 22 h local time (Sun at -60°), transparent air. Lines from N(E,S,W) to zenith shown (crosses each 10°). Centered on ζ Herculis, which is 16° to the left from N, at 26° height. Detailed maps 50° vertically, the first four maps 100° . *Jan Hollan, CzechGlobe*