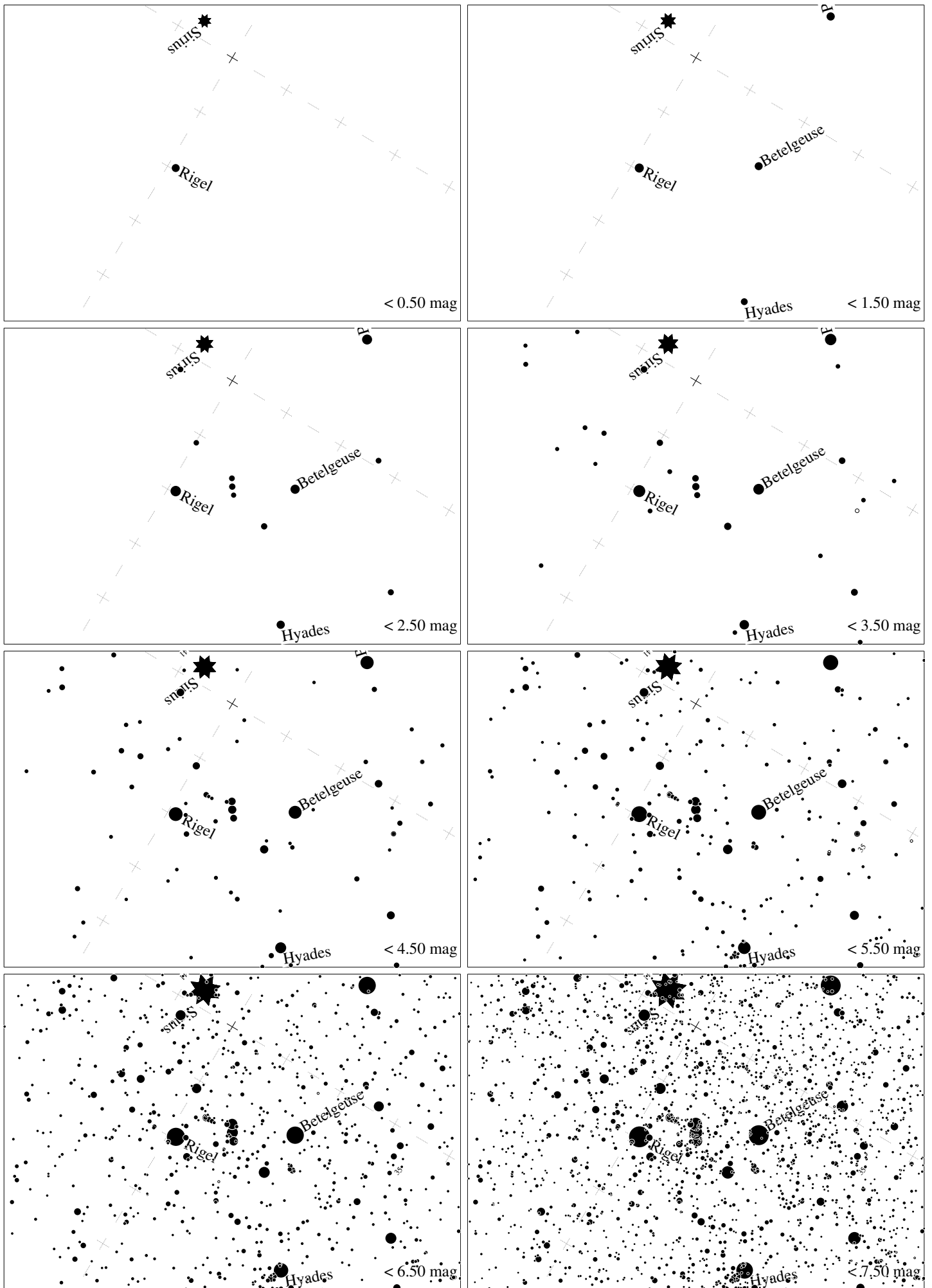
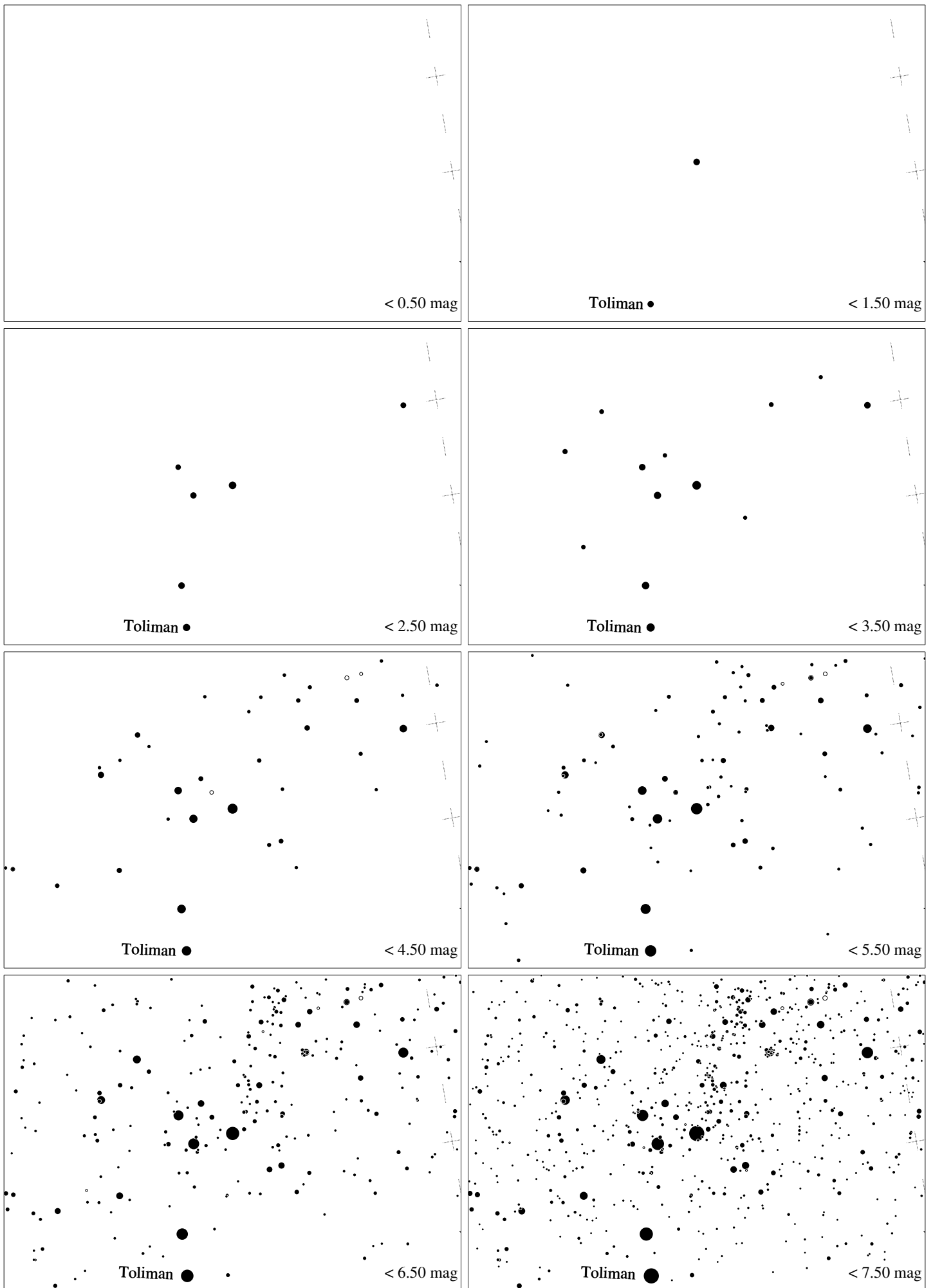


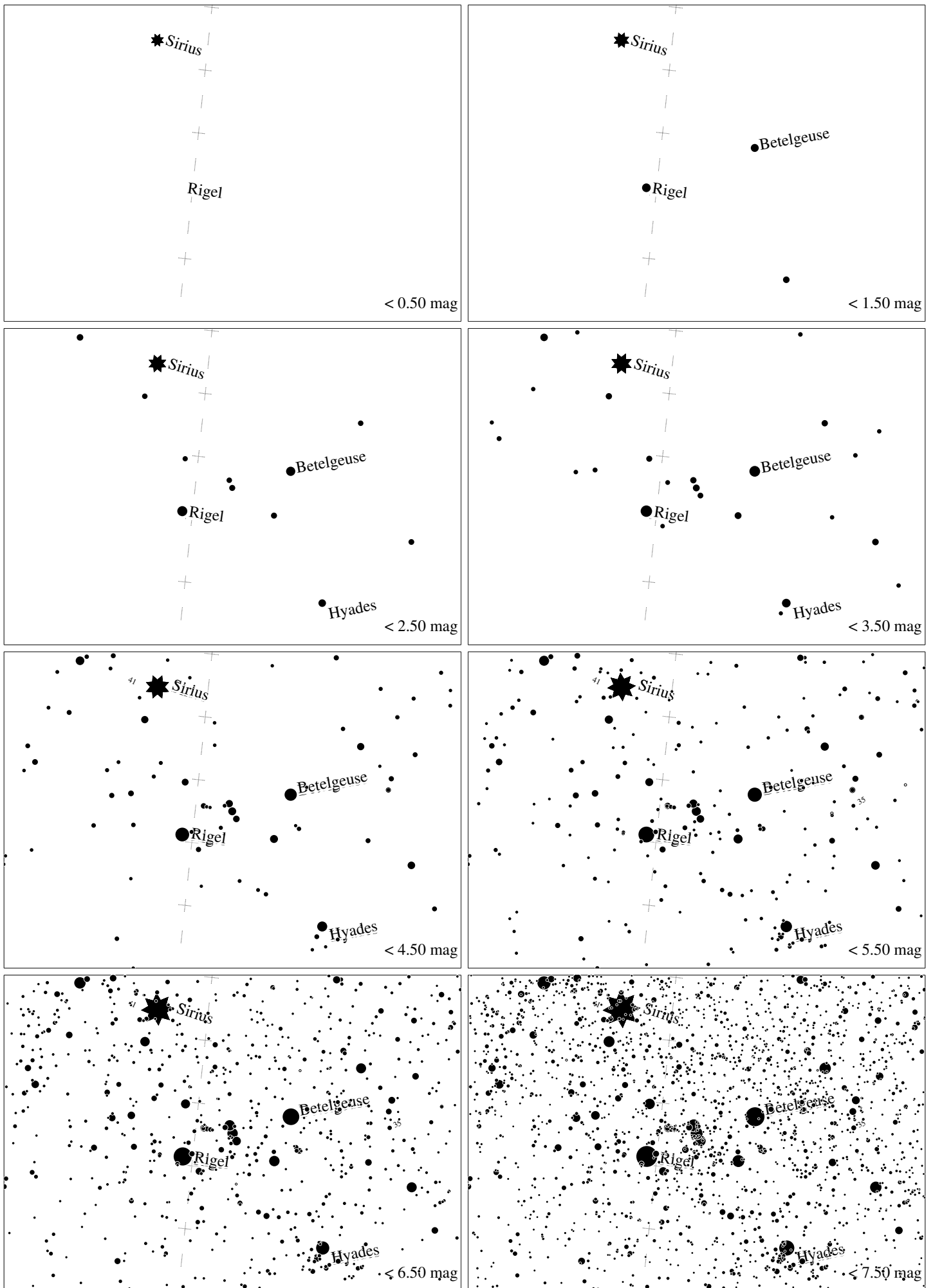
Maps for Globe at Night at latitude -10° , 2015-01-15, 21 h local time (Sun at -34°), transparent air. Lines from N(E,S,W) to zenith shown (crosses each 10°). Orion's belt is 59° to the right from N, at 73° height. The brightest fixed star is Sirius. Map vertical size is 50° . *Jan Hollan, CzechGlobe*



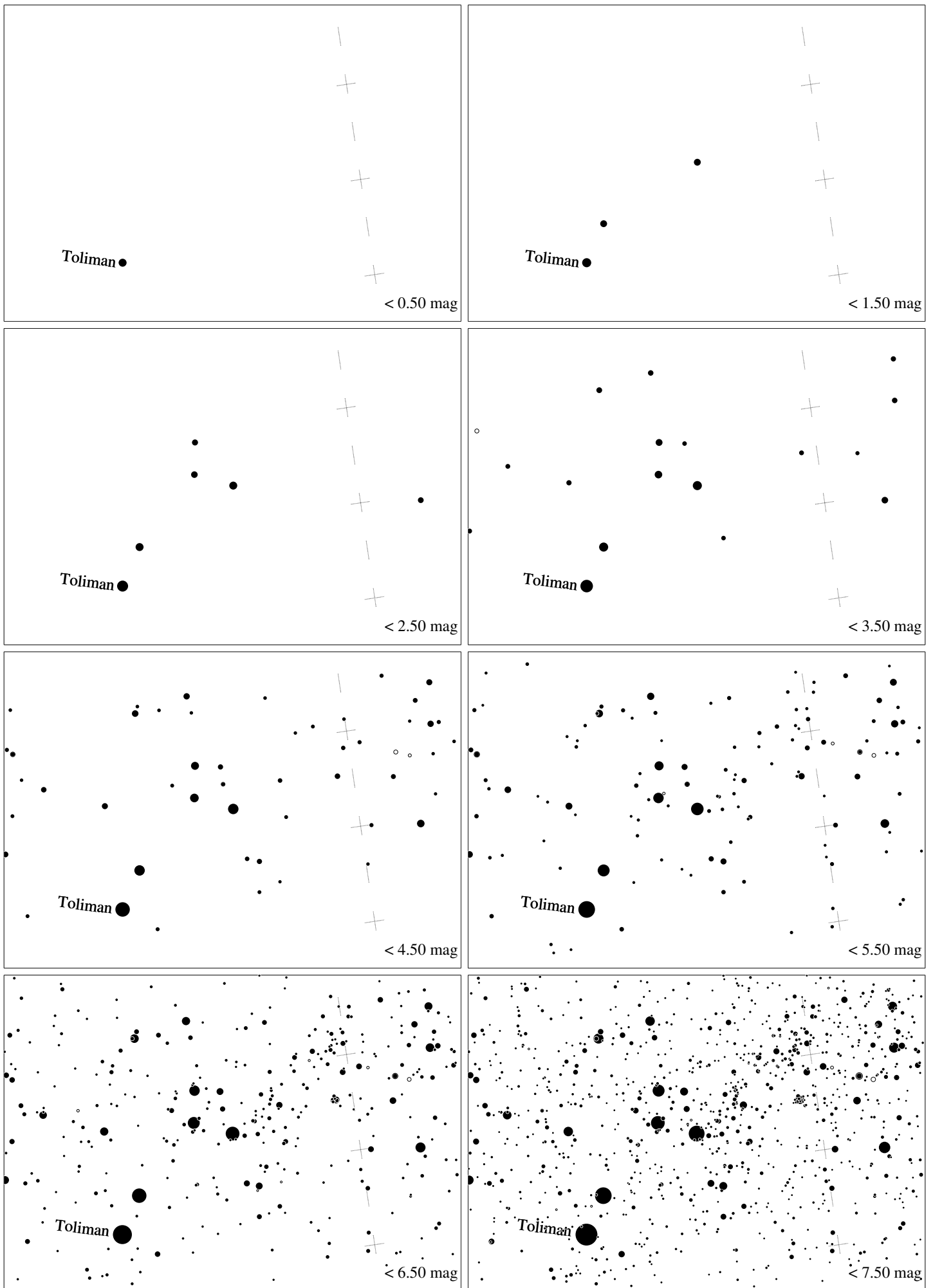
Maps for Globe at Night at latitude -10° , 2015-02-13, 21 h local time (Sun at -36°), transparent air. Lines from N(E,S,W) to zenith shown (crosses each 10°). Orion's belt is 59° to the left from N, at 73° height. The brightest fixed star is Sirius. Map vertical size is 50° . *Jan Hollan, CzechGlobe*



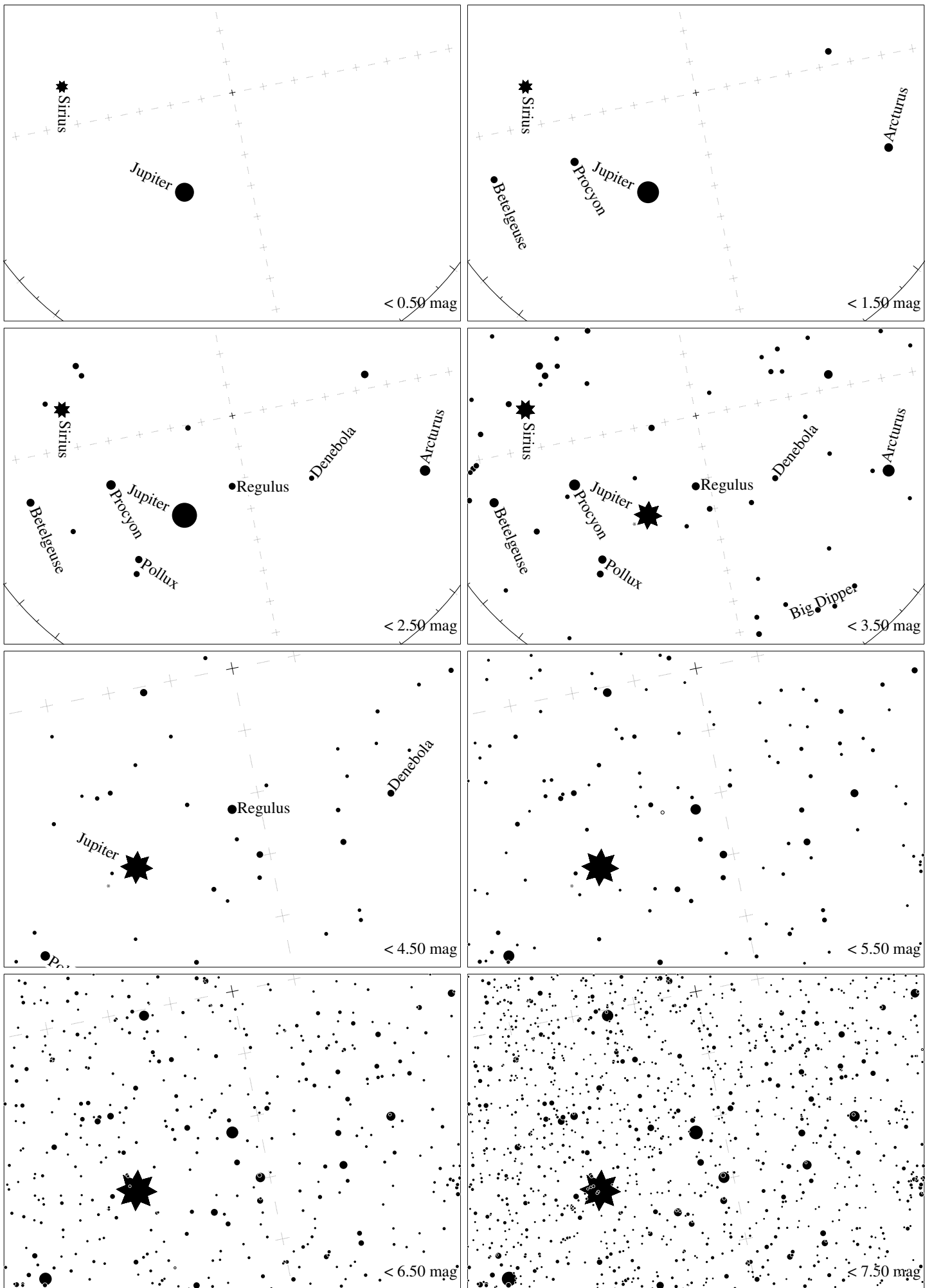
Maps for Globe at Night latitude -10° , 2015-03-15, 21 h local time (Sun at -42°), transparent air. The brightest star is Toliman (α Centauri). Central star Acrux (the brightest one in the Cross) is 25° left from the south, at 23° height. Map vertical size 33° . *Jan Hollan, CzechGlobe*



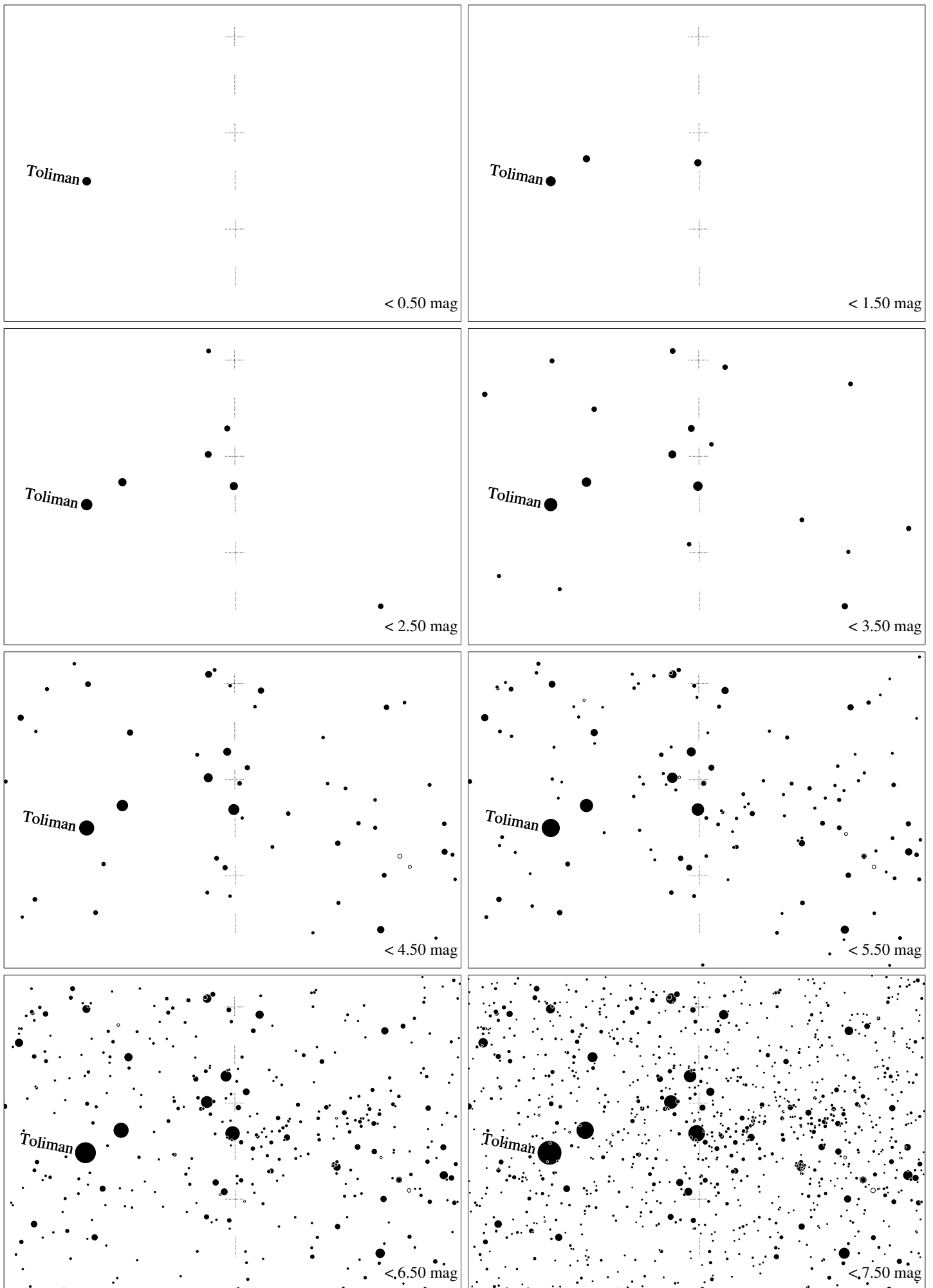
Maps for Globe at Night at latitude -10° , 2015-03-15, 21 h local time (Sun at -42°), transparent air. Lines from N(E,S,W) to zenith shown (crosses each 10°). Orion's belt is 81° to the left from N, at 46° height. The brightest fixed star is Sirius. Map vertical size is 50° . *Jan Hollan, CzechGlobe*



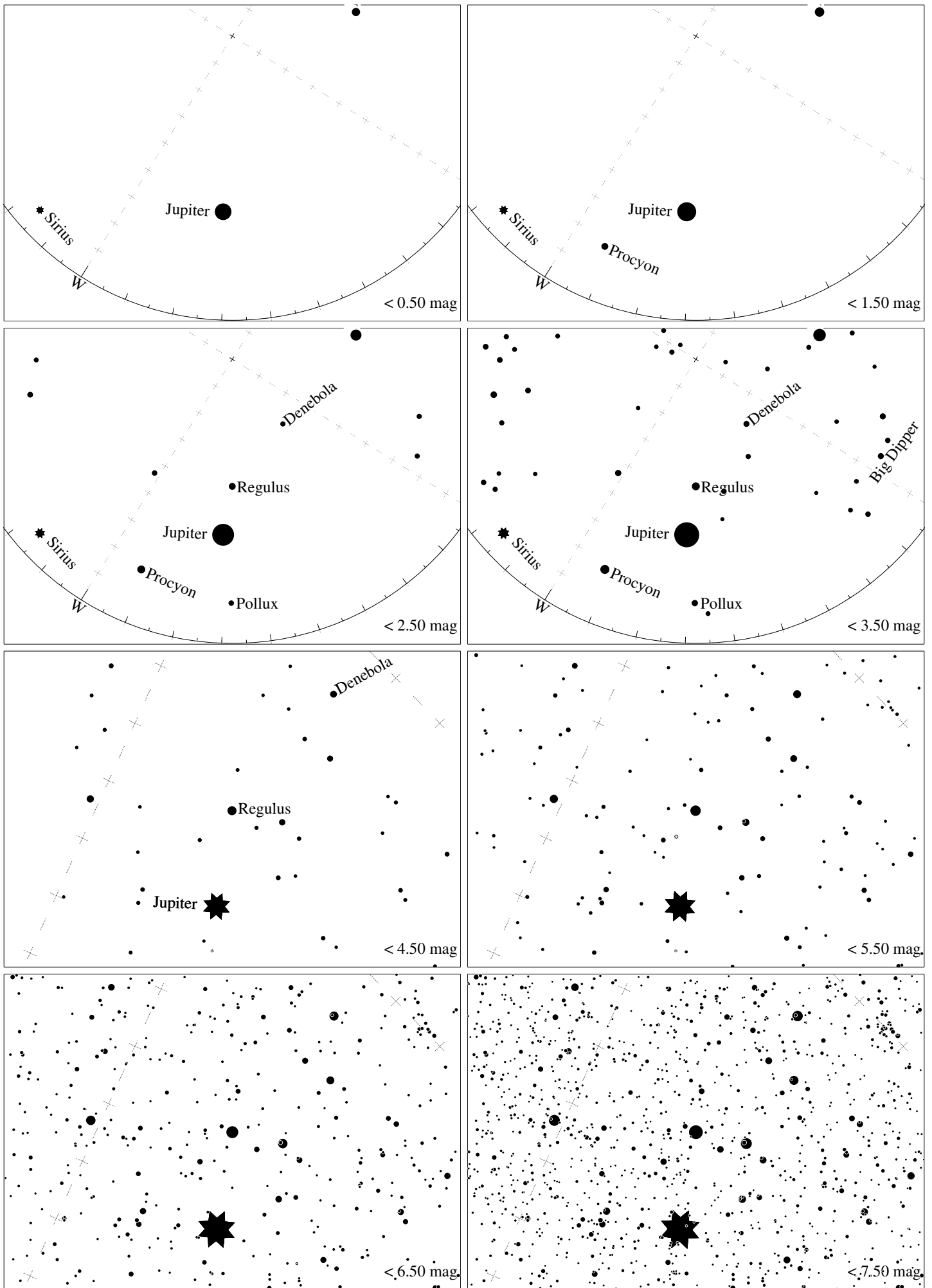
Maps for Globe at Night latitude -10° , 2015-04-13, 21 h local time (Sun at -46°), transparent air. The brightest star is Toliman (α Centauri). Central star Acrux (the brightest one in the Cross) is 16° left from the south, at 33° height. Map vertical size 33° . *Jan Hollan, CzechGlobe*



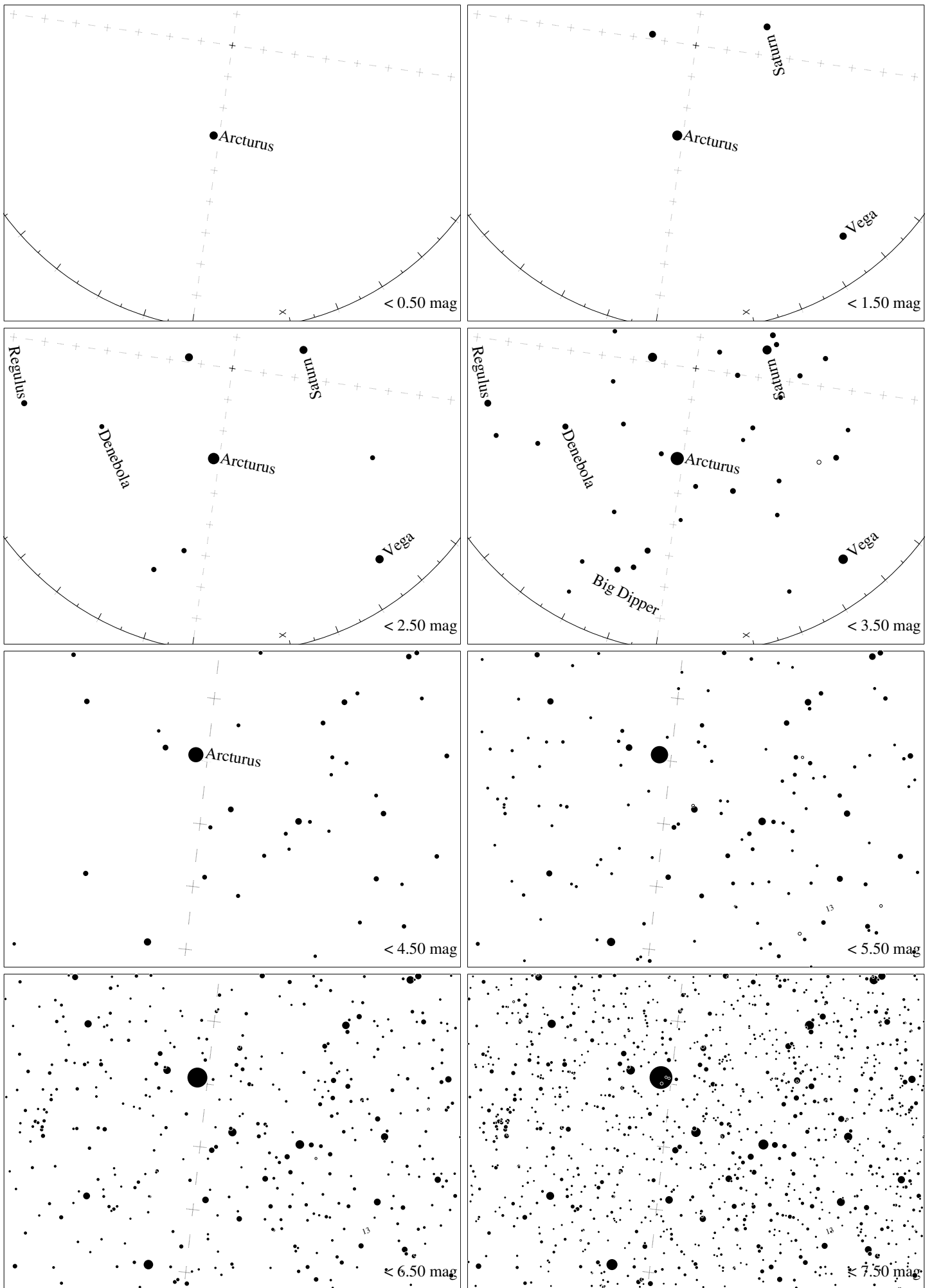
Maps for Globe at Night at latitude -10° , 2015-04-13, 21 h local time (Sun at -46°), transparent air. Lines from N(E,S,W) to zenith shown (crosses each 10°). Regulus (α Leonis) is 11° to the left from N, at 68° height. Detailed maps 50° vertically, the first four maps 100° . *Jan Hollan, CzechGlobe*



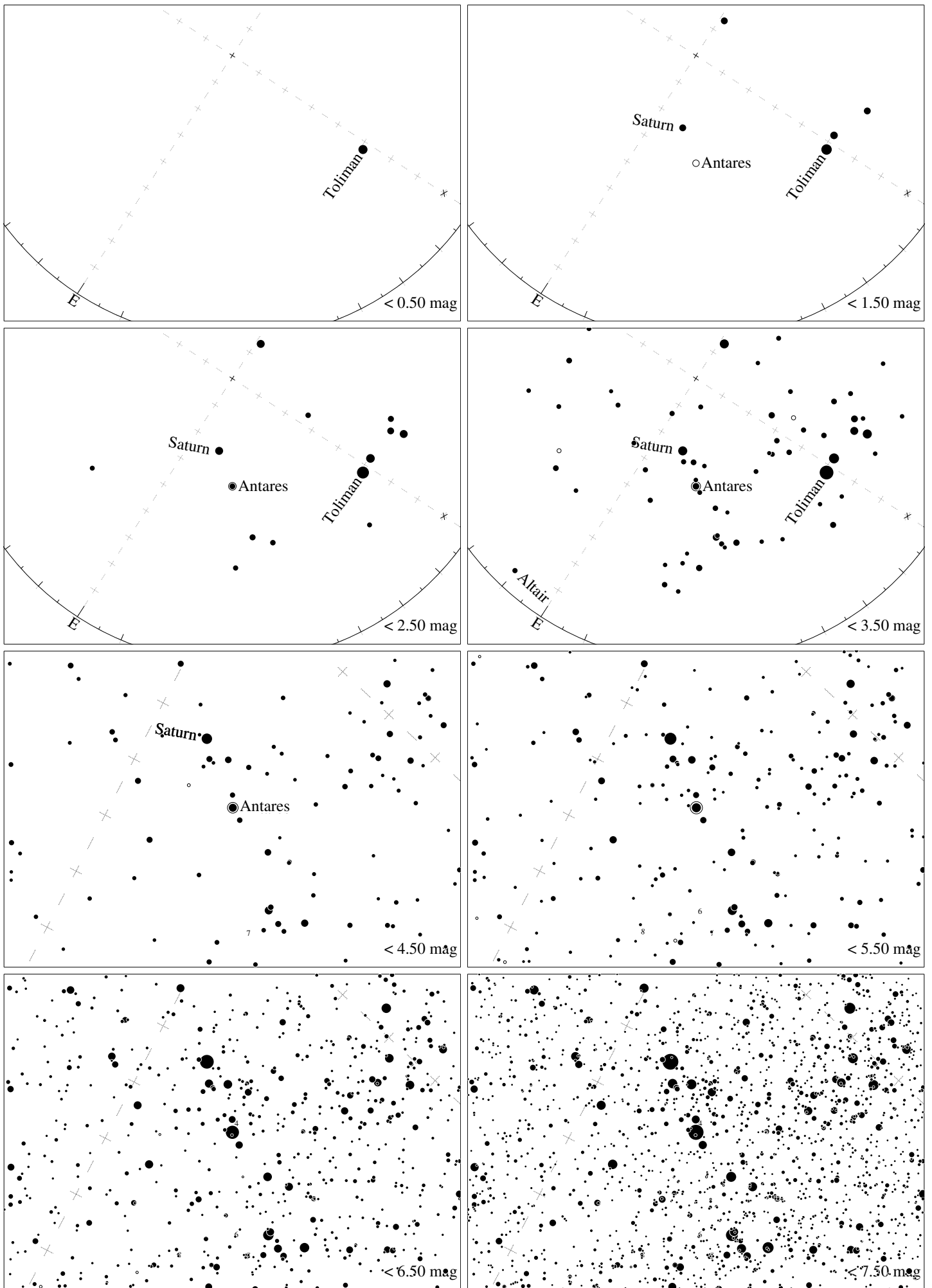
Maps for Globe at Night latitude -10° , 2015-05-13, 21 h local time (Sun at -46°), transparent air. The brightest star is Toliman (α Centauri). Central star Acrux (the brightest one in the Cross) is 0° left from the south, at 37° height. Map vertical size 33° . *Jan Hollan, CzechGlobe*



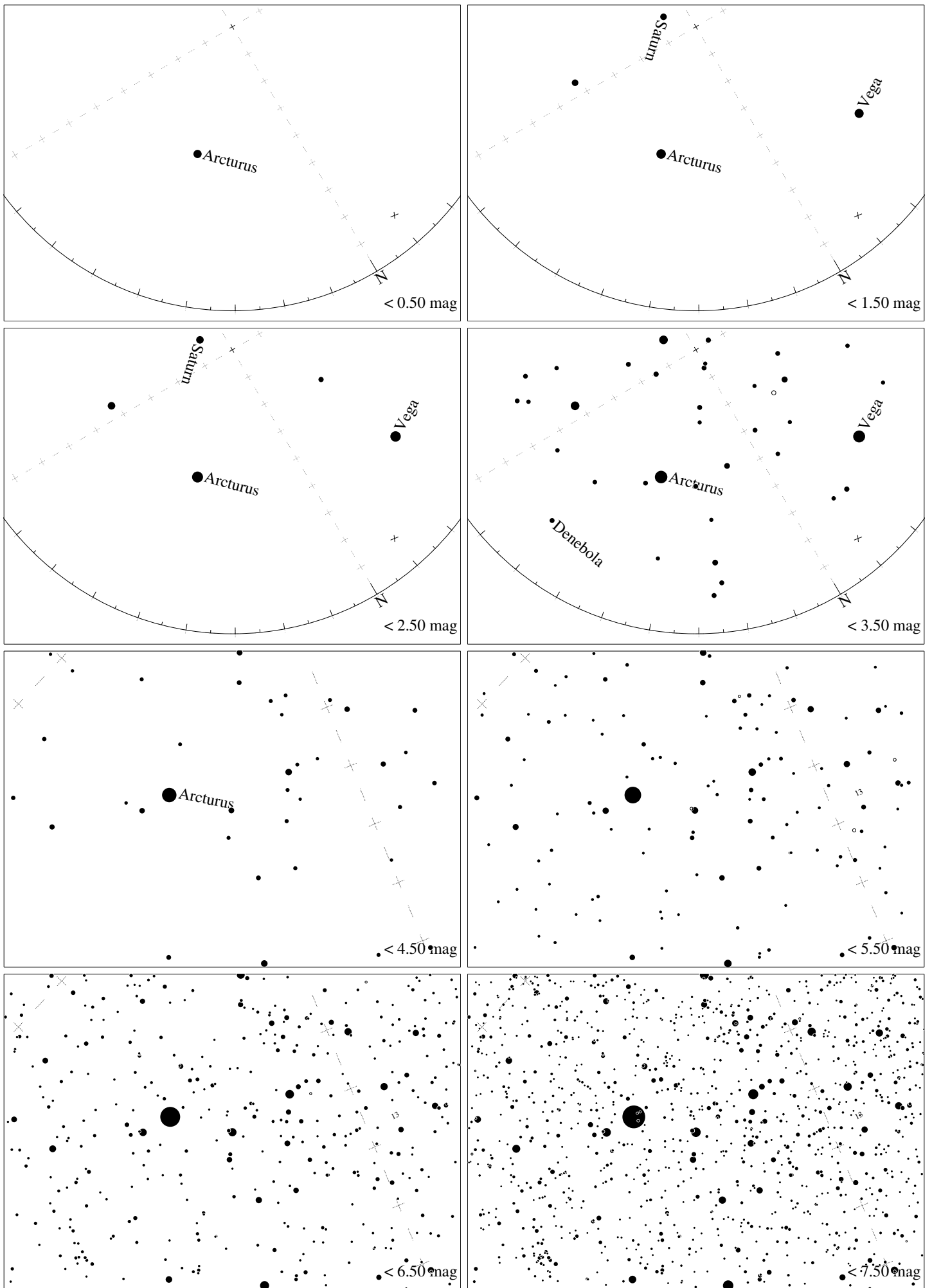
Maps for Globe at Night at latitude -10° , 2015-05-13, 21 h local time (Sun at -46°), transparent air. Lines from N(E,S,W) to zenith shown (crosses each 10°). Regulus (α Leonis) is 58° to the left from N, at 50° height. Detailed maps 50° vertically, the first four maps 100° . *Jan Hollan, CzechGlobe*



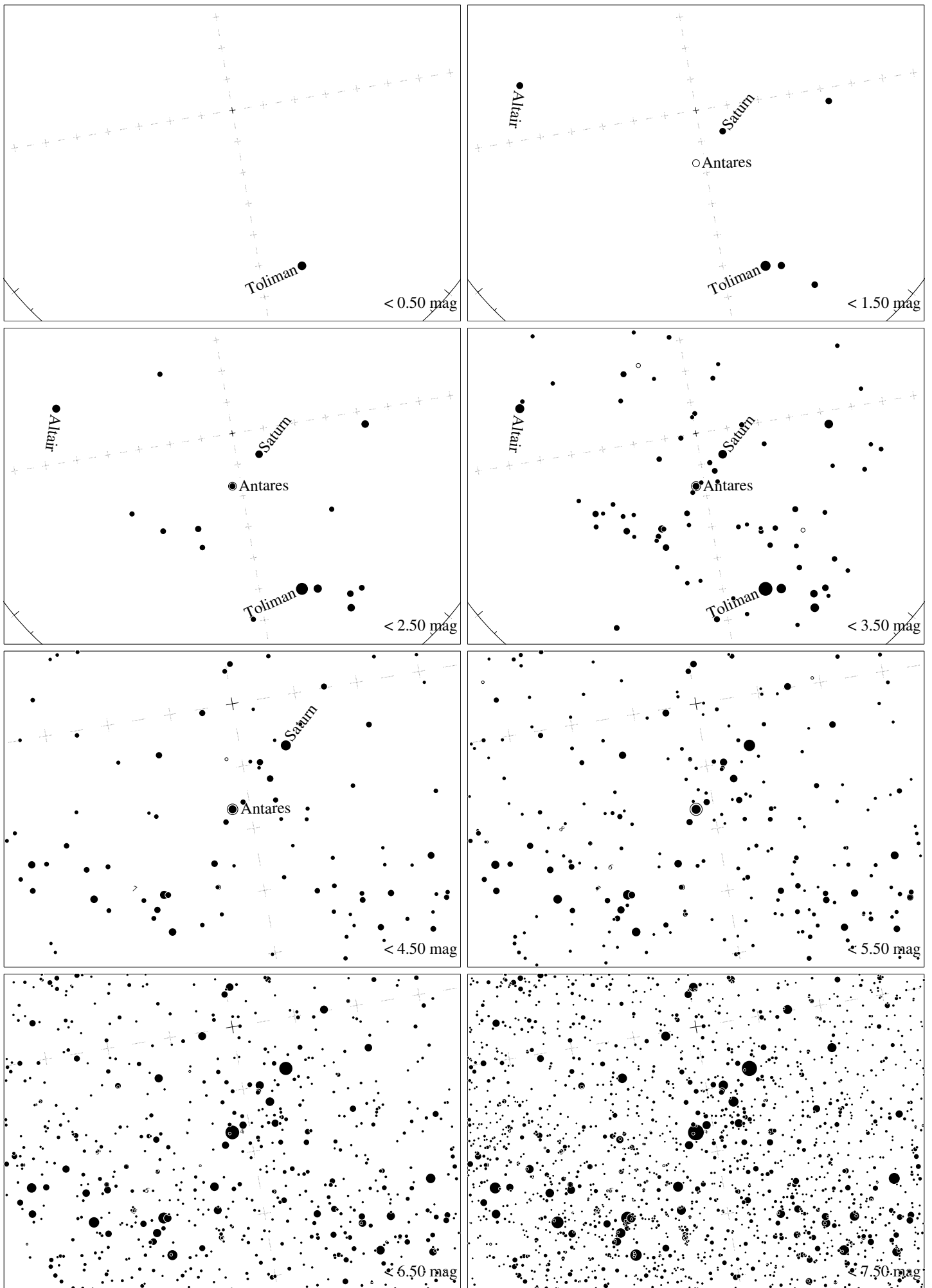
Maps for Globe at Night latitude -10° , 2015-06-12, 21 h local time (Sun at -45°), transparent air. Lines from N(E,S,W) to zenith shown (crosses each 10°). Centered on Izar (ϵ Bootis), which is 8° to the right from N, at 53° height. Detailed maps 50° vertically, the first four maps 100° . *Jan Hollan, CzechGlobe*



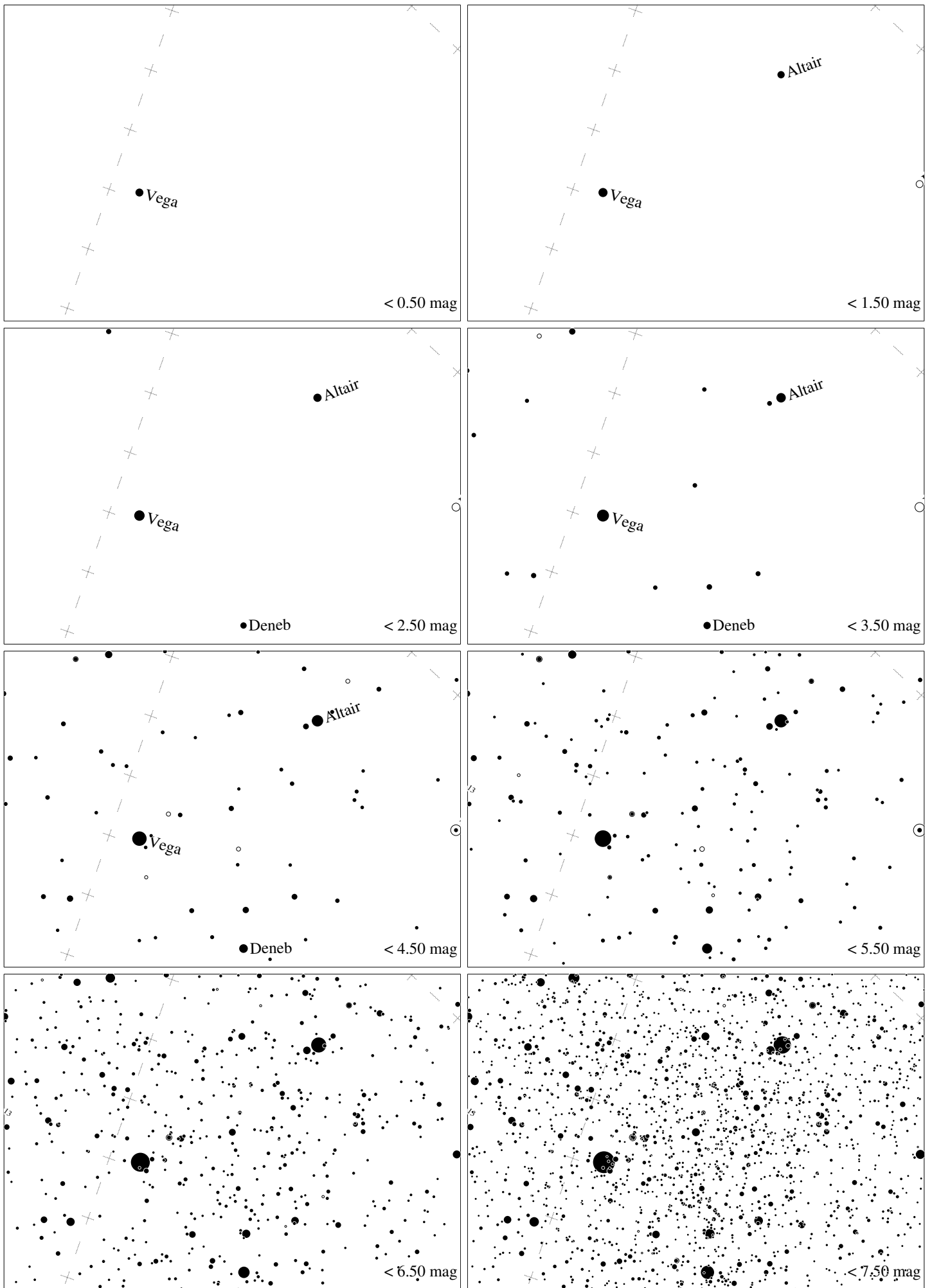
Maps for Globe at Night latitude -10° , 2015-06-12, 21 h local time (Sun at -45°), transparent air. Lines from N(E,S,W) to zenith shown (crosses each 10°). Centered on Antares (α Scorpii), which is 57° to the left from S, at 56° height. Detailed maps 50° vertically, the first four maps 100° . *Jan Hollan, CzechGlobe*



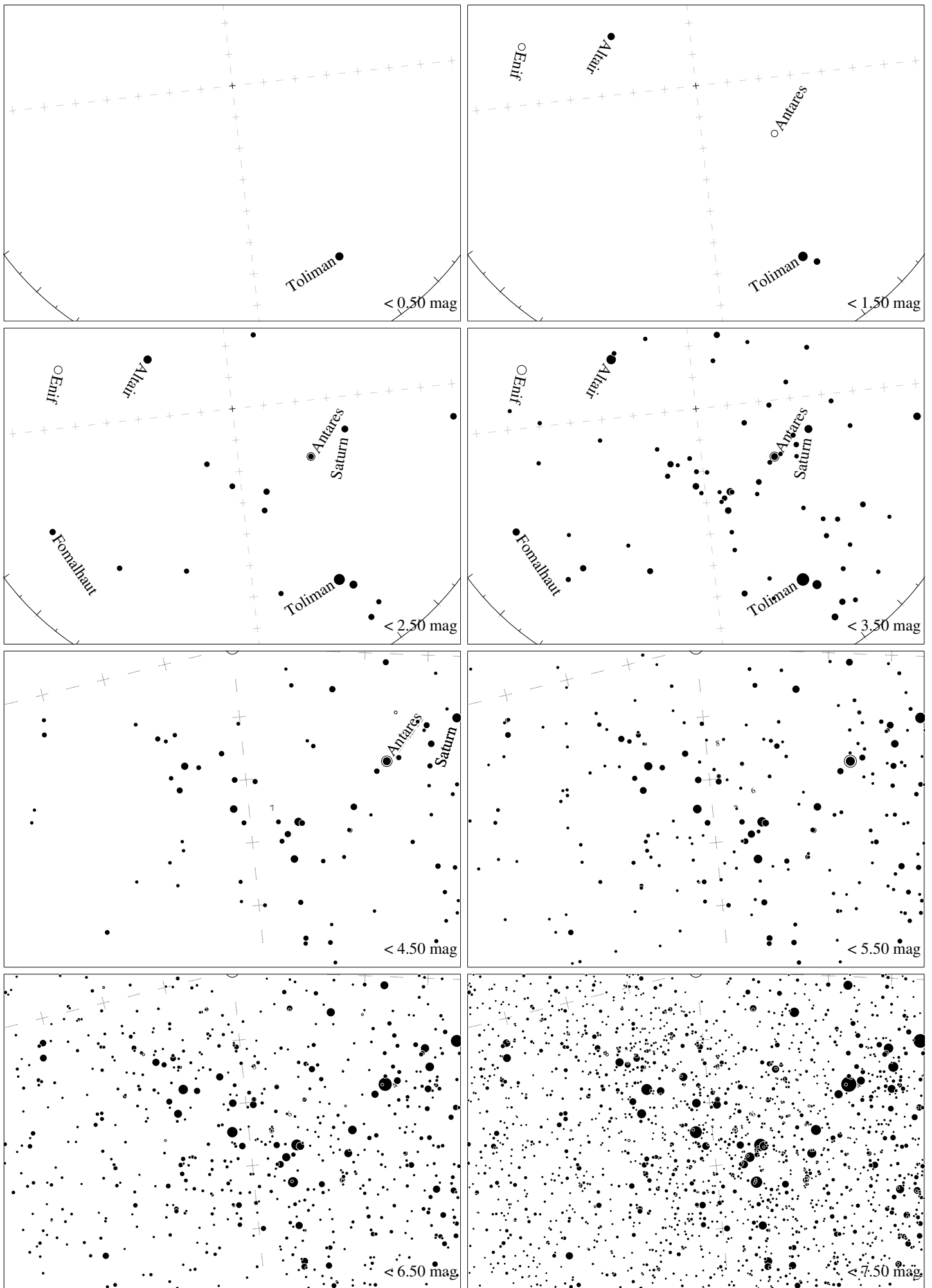
Maps for Globe at Night latitude -10° , 2015-07-13, 21 h local time (Sun at -44°), transparent air. Lines from N(E,S,W) to zenith shown (crosses each 10°). Centered on Izar (ϵ Bootis), which is 31° to the left from N, at 47° height. Detailed maps 50° vertically, the first four maps 100° . *Jan Hollan, CzechGlobe*



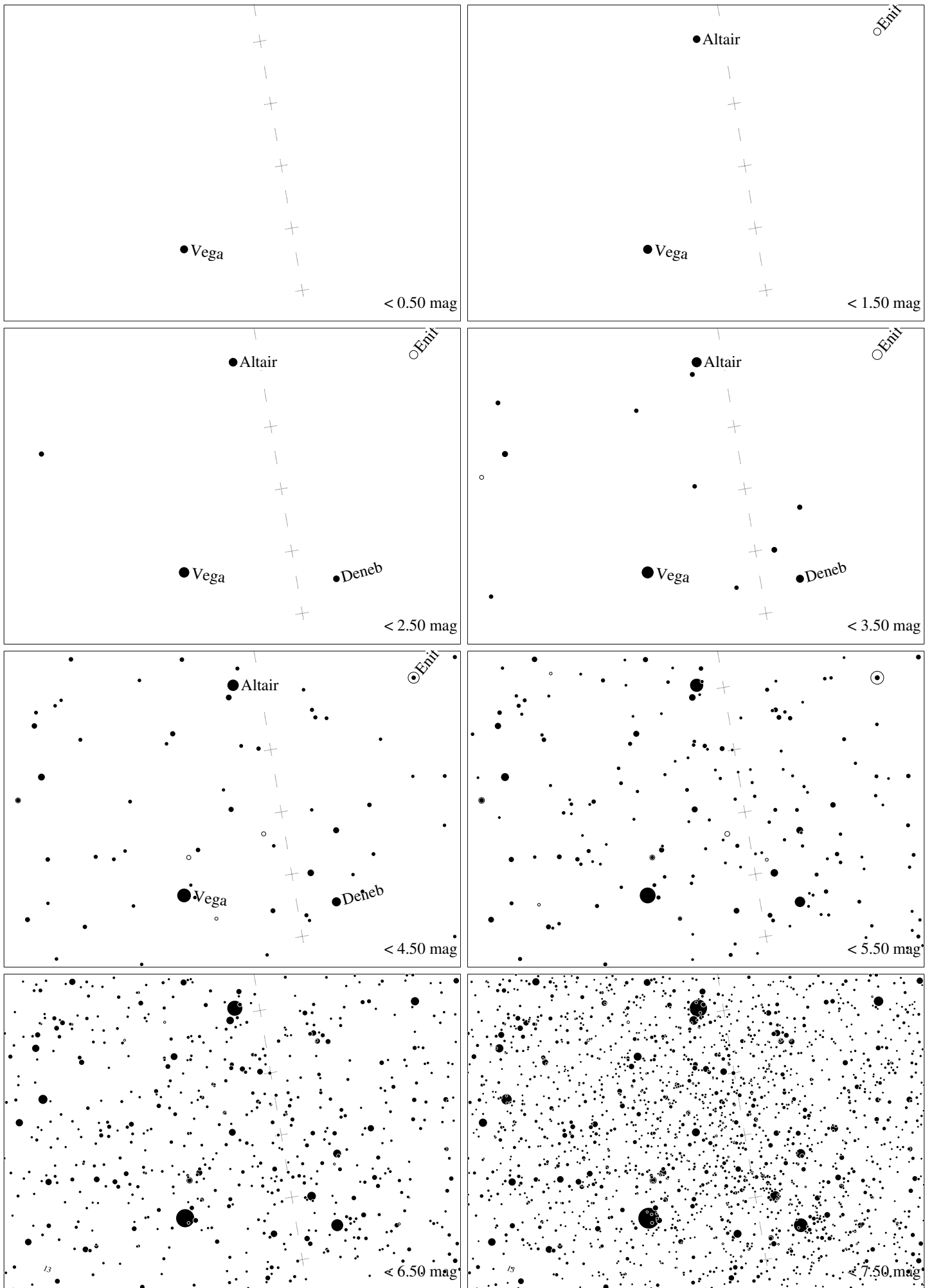
Maps for Globe at Night latitude -10° , 2015-07-11, 21 h local time (Sun at -44°), transparent air. Lines from N(E,S,W) to zenith shown (crosses each 10°). Centered on Antares (α Scorpii), which is 10° to the left from S, at 73° height. Detailed maps 50° vertically, the first four maps 100° . *Jan Hollan, CzechGlobe*



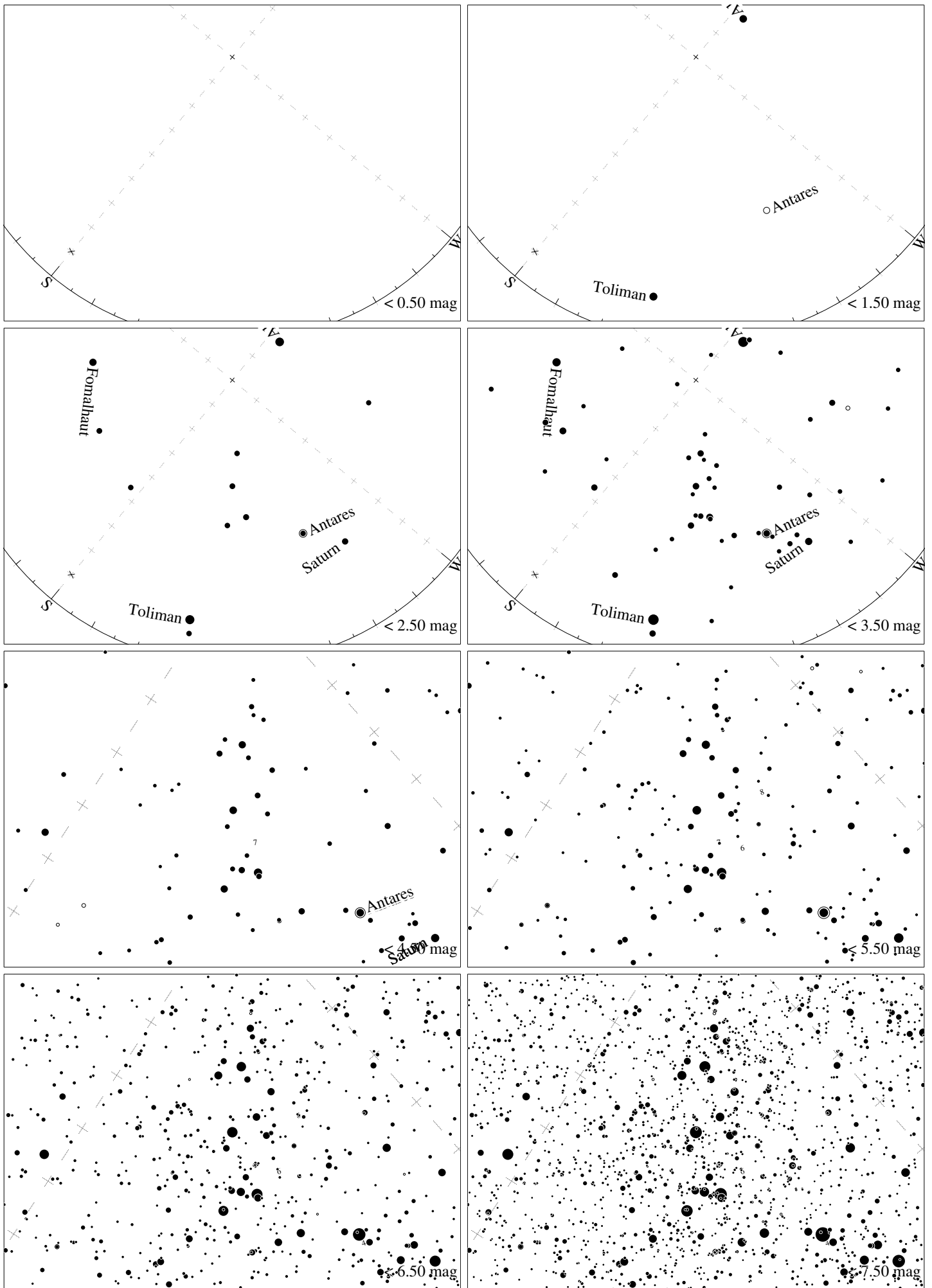
Maps for Globe at Night latitude -10° , 2015-08-09, 21 h local time (Sun at -44°), transparent air. Lines from N(E,S,W) to zenith shown (crosses each 10°). Centered on Albireo (β Cygni), 26° to the right from N, at 47° height, near the centre of Summer Triangle. Map vertical size is 50° . *Jan Hollan, CzechGlobe*



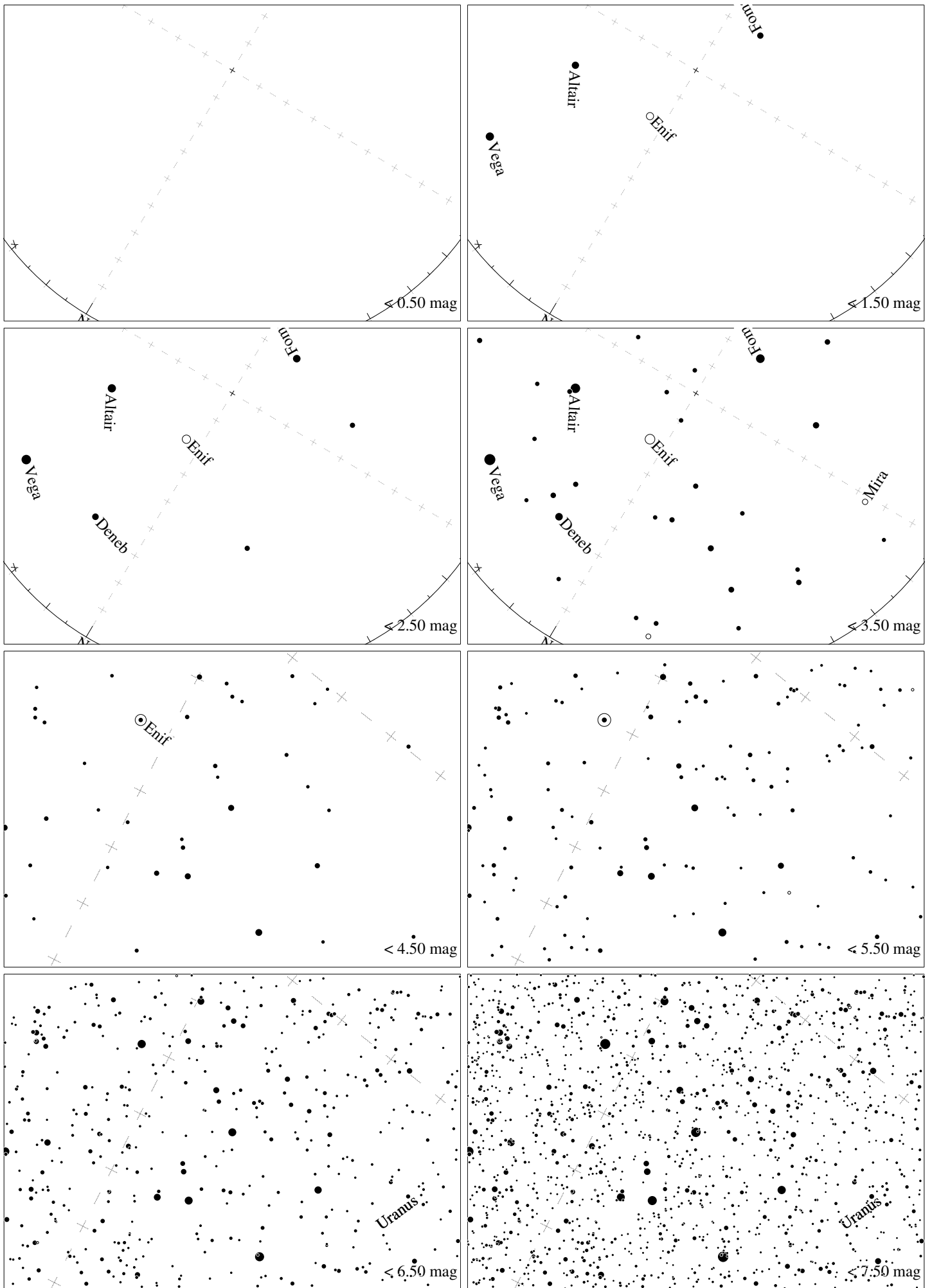
Maps for Globe at Night latitude -10° , 2015-08-09, 21 h local time (Sun at -44°), transparent air. Lines from N(E,S,W) to zenith shown (crosses each 10°). Centered on Kaus Australis (ϵ Sagittarii), which is 6° to the left from S, at 65° height. Detailed maps 50° vertically, the first four maps 100° . *Jan Hollan, CzechGlobe*



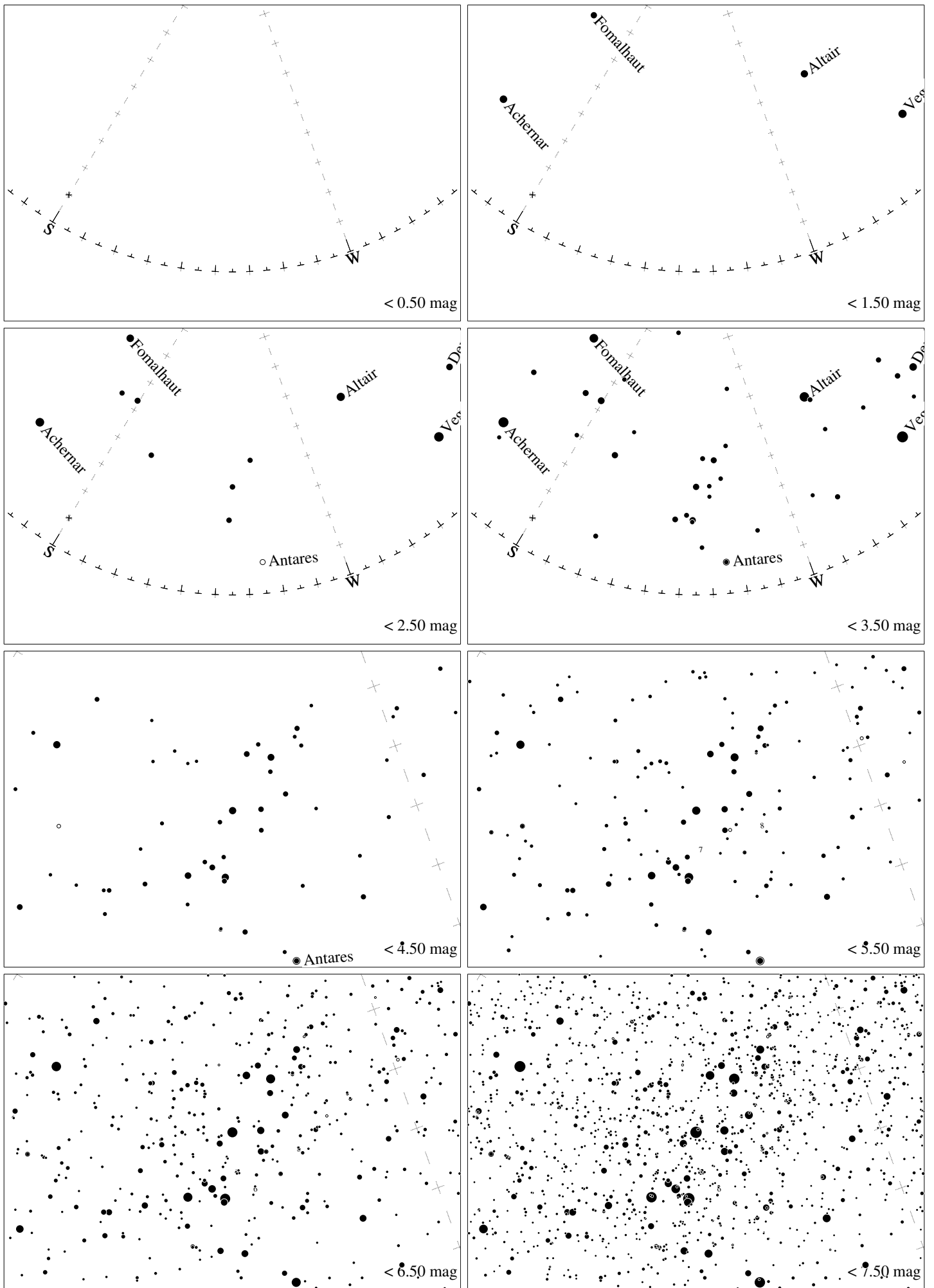
Maps for Globe at Night latitude -10° , 2015-09-07, 21 h local time (Sun at -46°), transparent air. Lines from N(E,S,W) to zenith shown (crosses each 10°). Centered on Albireo (β Cygni), 12° to the left from N, at 51° height, near the centre of Summer Triangle. Map vertical size is 50° . *Jan Hollan, CzechGlobe*



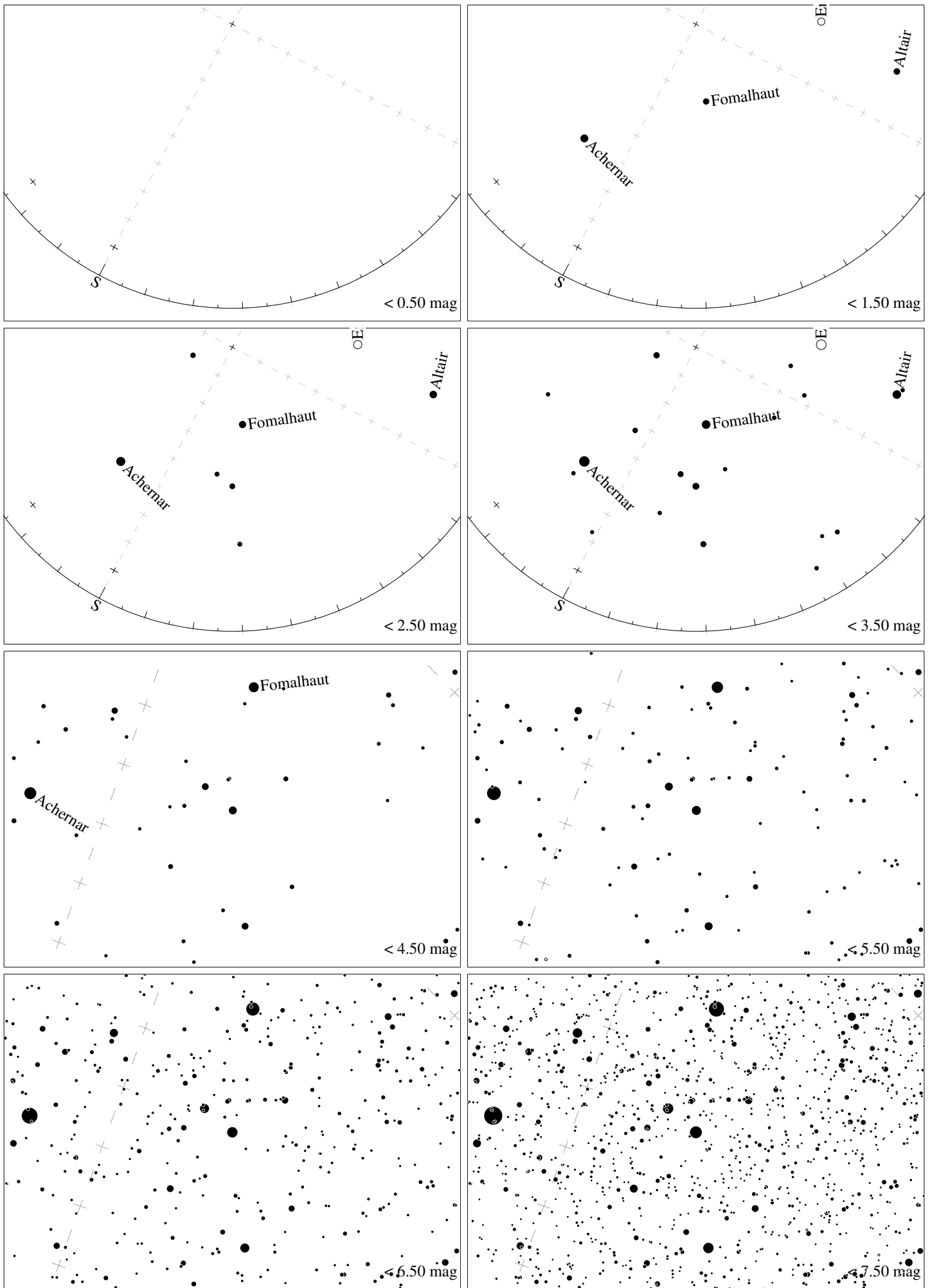
Maps for Globe at Night latitude -10° , 2015-09-07, 21 h local time (Sun at -46°), transparent air. Lines from N(E,S,W) to zenith shown (crosses each 10°). Centered on Kaus Australis (ϵ Sagittarii), which is 40° to the right from S, at 56° height. Detailed maps 50° vertically, the first four maps 100° . *Jan Hollan, CzechGlobe*



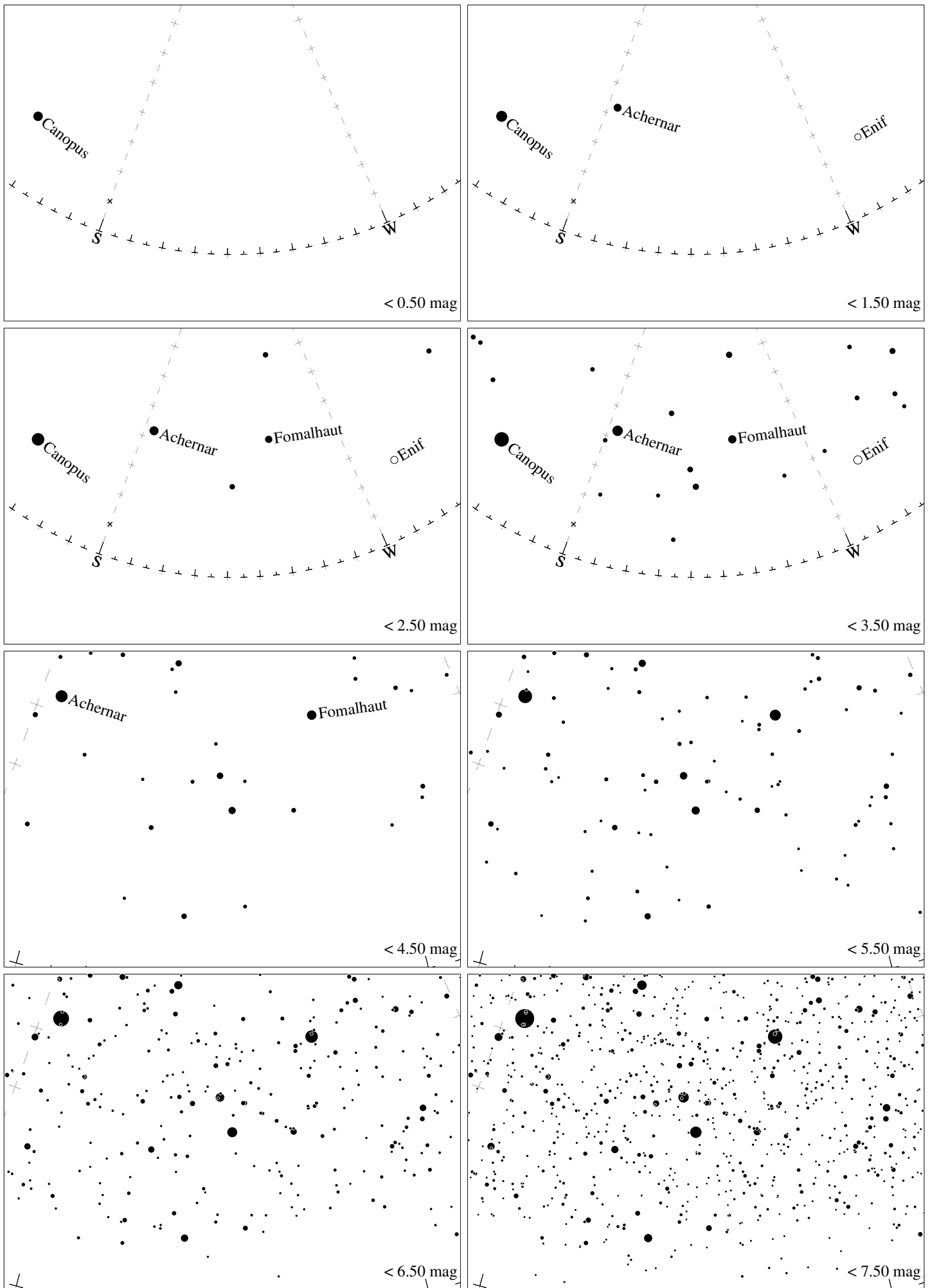
Maps for Globe at Night latitude -10° , 2015-10-07, 21 h local time (Sun at -45°), transparent air. Lines from N(E,S,W) to zenith shown (crosses each 10°). The map is centered on Markab (α Pegasi), which is 31° to the right from N, at 61° height. Detailed maps 50° vertically, the first four maps 100° . *Jan Hollan, CzechGlobe*



Maps for Globe at Night latitude -10° , 2015-10-07, 21 h local time (Sun at -45°), transparent air. Lines from N(E,S,W) to zenith shown (crosses each 10°). Centered on Kaus Australis (ϵ Sagittarii), which is 55° to the right from S, at 34° height. Detailed maps 50° vertically, the first four maps 100° . Jan Hollan, CzechGlobe



Maps for Globe at Night latitude -10° , 2015-11-06, 21 h local time (Sun at -42°), transparent air. Lines from N(E,S,W) to zenith shown (crosses each 10°). Centered on Altair (α Gruis), which is 28° to the right from S, at 46° height. Detailed maps 50° vertically, the first four maps 100° . *Jan Hollan, CzechGlobe*



Maps for Globe at Night latitude -10° , 2015-12-06, 21 h local time (Sun at -37°), transparent air. Lines from N(E,S,W) to zenith shown (crosses each 10°). Centered on Alnair (α Gruis), which is 41° to the right from S, at 29° height. Detailed maps 50° vertically, the first four maps 100° . *Jan Hollan, CzechGlobe*